



Waterfront Resilience Program

# Islais Creek / Bayview Community Meeting #1.5 - Summary September 19, 2019



San Francisco  
Planning



US Army Corps  
of Engineers

# COMMUNITY MEETING OVERVIEW

## EVENT DETAILS

**Timing:** Thursday, September 19, 2019 from 6 PM to 7:30 PM

**Location:** Southeast Community Facility

### **Presentations:**

- Overview of Islais Creek / Bayview Resilience Efforts with Lindy Lowe, Port of San Francisco and Robin Abad, San Francisco Planning
- Presentation of the Table Engagement with Nico Wright, CMG Landscape Architecture
- [Link to presentations](#)



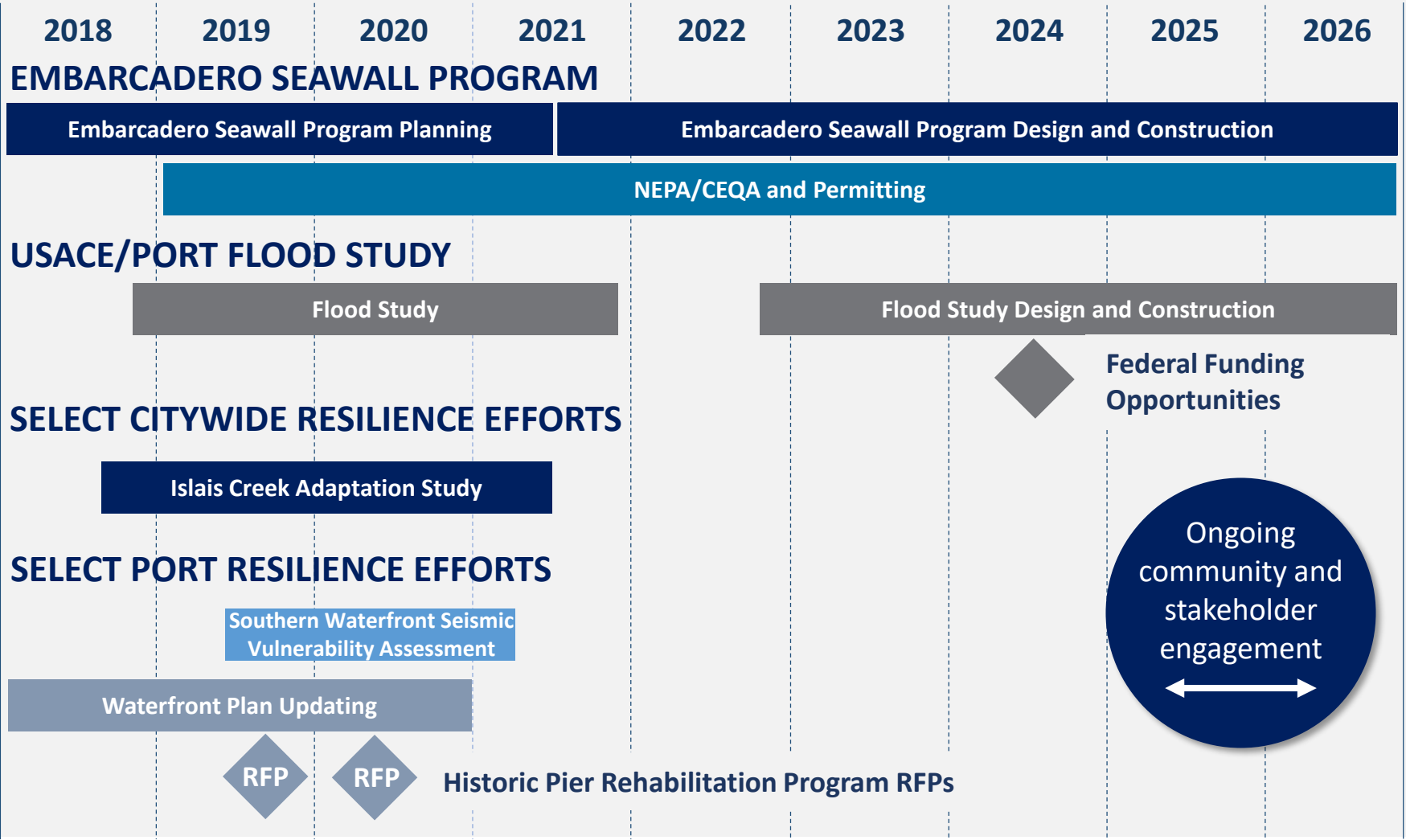
# COMMUNITY MEETING AGENDA

## AGENDA

- San Francisco's flood and earthquake risks
- City/Port of San Francisco Resilience efforts
- Port Waterfront Resilience Program
- Islais Creek Resilience
- Present tonight's activity on asset mapping
- Engage in small group activity and report back



# WATERFRONT RESILIENCE PROGRAM TIMELINE



# COMMUNITY MEETING ATTENDANCE






Approximately 60 people were in attendance

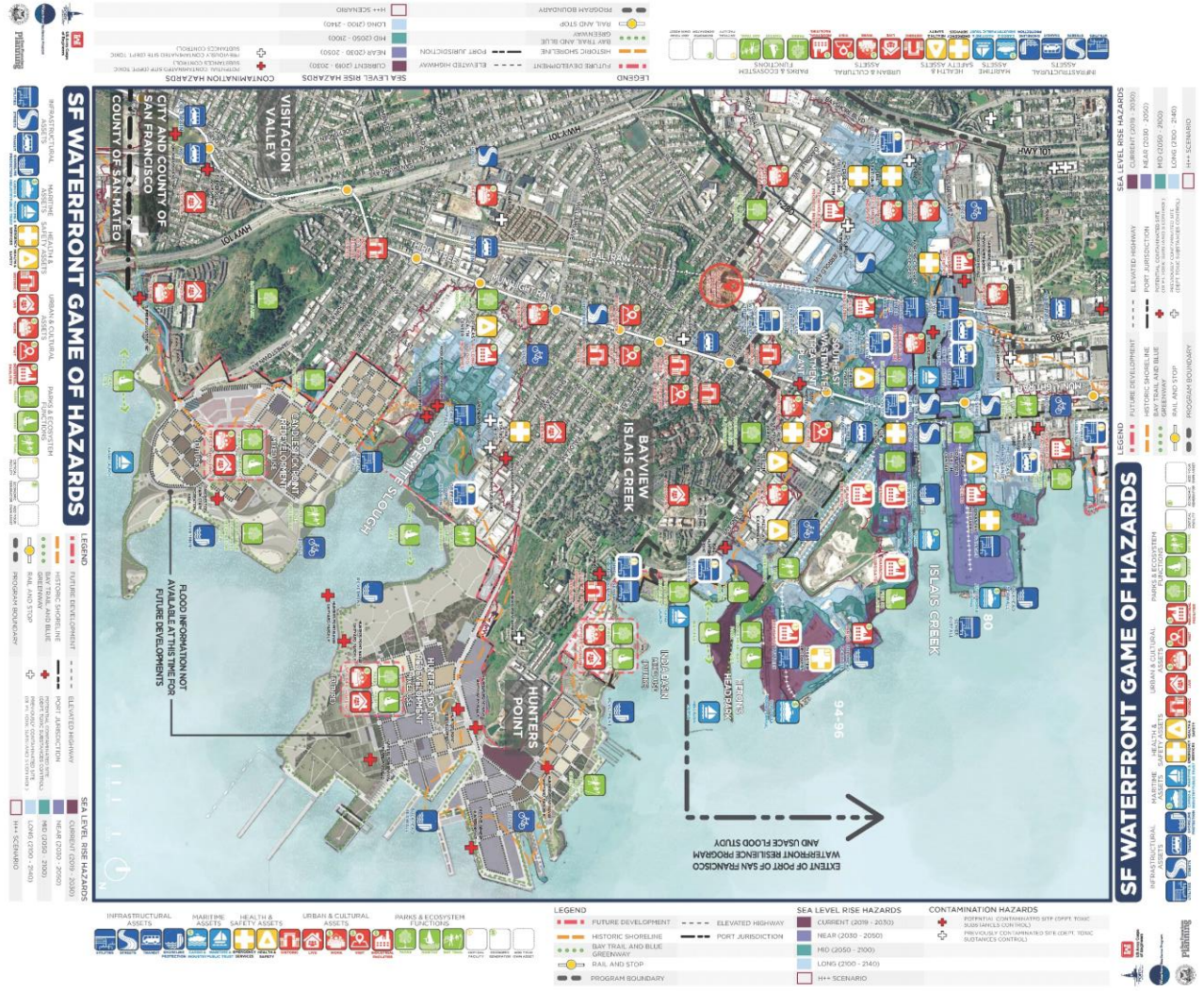
# ENGAGEMENT ACTIVITY OVERVIEW: "GAME OF HAZARDS"



## OVERVIEW

- Attendees joined Program staff for a mapping exercise and identified the following by placing stickers on the map:
  -  What assets are most important to **you**?
  -  What assets are most important to the **city**?
  -  If disaster strikes, what is of the most concern?
- What follows is an overview slide, summarizing the themes from the evening and then notes from each table. The bolded responses reflect the highest priorities.

# GAME OF HAZARDS GAME BOARD



# WHAT WE HEARD AT TABLE A



- **People**
- **Cargo and recycling facilities, industrial PDR uses, and jobs**
- **Shoreline parks**
- Weather
- Bayview Hilltop Park
- Shipyard
- Birds
- City College
- Senior housing
- Schools



- **Industrial maritime operations**
- **Affordable low-income housing**
- **Southeast Treatment Plant**
- Recycling operations
- Emergency response
- Shoreline parks / Heron's Head Park and EcoCenter
- SFMTA facilities
- Schools / charter schools
- Technology
- Islais Creek
- Firehouse
- Dr. Burke Health
- Rafiki
- Cargo facilities
- Post office



- **Housing**
- **Southeast Treatment Plant**
- **Disaster Recovery at Piers 80 - 96**
- Shoreline parks
- India Basin development
- Neighborhood preparedness
- Subsistence fishing
- Disaster workers



# WHAT WE HEARD AT TABLE A

- What assets were missing from the map?
  - Oakdale Community Centers
  - Providence Baptist Church
  - True Hope Church

# WHAT WE HEARD AT TABLE B



- **Neighborhood behind Hwy 101 at Girard and Ordway**
- **Piers 94-96**
- **Hunters Point Shipyard**
- Bayview Library
- BMAGIC
- Black Merch Assoc. (*Bayview Merchants Assoc.?*)
- Mom & Pop stores
- EDOT
- Africa American Culture District
- Muni T Train
- SFUSD/ISOO Oakdale
- City College
- Bayview YMCA
- Urban ed, YCD, and 100% College Prep
- MLK pool and Park & Rec
- Homes
- Weather
- Community
- Culture
- schools, centers, and gyms
- Senior centers,
- Local food pantries
- Ms. Jackie's Garden (Alice Griffith)
- Quesada Garden
- Opera House
- Joseph Lee Gym



- **Candlestick Point development**
- **Bayview Opera House**
- **Joseph Lee Recreation Center**
- Hunters Point View
- The hill
- Everything
- Candlestick
- BJ's



- **Southeast Treatment Plant**
- **Third Street Bridge**
- **India Basin**
- Seawall
- Transportation,
- Medical/cement,
- Soil in shipyard
- PG&E
- PUC/sewer
- "Not having unity in the community"

## WHAT WE HEARD AT TABLE B

- What assets were missing from the map?
  - *See the non-bolded notes under the heart on the prior slide*
- Additional feedback, comments, or questions?
  - Educate on how to evacuate
  - Where did the name come from?
  - Where are the jobs?
  - Bayview Hunters Point / it's central to the southern waterfront / historically neg. by the city / now focus of re-dev. therefore it needs the FI area in the report to the US Congress!

# WHAT WE HEARD AT TABLE C



- **Attitude**
- **Food**
- **Housing sites (more of them)**
- **Waterfront**
- **New community / development (rebirth) – (marked at Hunters Point and Candlestick Point) (“if residents benefit”)**
- **Community**
- Faith based community
- Diversity
- “Affordability, one of the last areas, best location in the city”



- “It would be good to have a destination / reason for others to come to Bayview. Something of pride (Candlestick used to bring people)”
- SFPUC / Southeast Treatment Plant
- Port – “Development of Port into a world class facility,” (marked at Pier 94 wetlands)
- Revitalize the area
- HWY 101
- Shipyard seawall
- Police substations
- Fire department
- Proximity to the airport and Silicon Valley
- Post office
- All important utilities
- Port facilities
- Recology
- Transportation (Muni) and bus facilities
- Revitalization



- **Displacement**
- **Shipyard seawall (needs protection\_**
- **Emergency plan for people that on the Hunters Point hill**
- **Food dessert**

# WHAT WE HEARD AT TABLE C

- What assets were missing from the map?
  - Police station at Williams Ave
  - “No senior center designation, no police station designations”
- Additional feedback, comments, or questions?
  - Signs for seniors / people with disabilities
  - “Do we have parks? How do we compare to other neighborhoods.”
  - “Excited about the new development (rebirth of the area)”
  - “How does Bayview open space compare with other districts?”
  - “Not a destination spot, no museum”
  - “Displacement”
  - “Need to bring back commerce to India Basin, Islais Creek”

# WHAT WE HEARD AT TABLE D



- **SF railroad**
- **Heron's Head Park**
- "The whole area"
- Sewage treatment plant
- Piers 90/92/70
- SFMTA bus park



- **Third Street Bridge**
- **Southeast Treatment Plant**
- **Whole watershed (Islais Creek)**



- **Yosemite Slough**
- **Hunters Point Shipyard**
- **Flooding in general**

# WHAT WE HEARD AT TABLE D

- What assets were missing from the map?
  - Islais Creek Southern Gateway Community Park
  - The Farm – Islais Creek Northern Gateway Community Park
  - Southeast Health Center at Yosemite Slough
- Additional feedback, comments, or questions?
  - Contractor jobs opportunities for local Bayview / Hunters Point
  - Job readiness training
  - Islais Creek watershed

# WHAT WE HEARD AT TABLE E



- **Hunters Point hilltop neighborhood**
- **Historic and community landmarks (*marked near Palou and Third*) – Bayview Library, Opera House, Joseph Lee Rec center, etc.**
- **Candlestick Point / Bay Trail**
- Water quality testing
- Candlestick Point
- “My house”
- Neighborhoods
- Jobs for local community and training



- **Southeast Treatment Plant**
- **Third Street Bridge**
- **Disaster recovery at Piers 94-96**
- Emergency services
- Existing flooding



- **Disaster recovery at Piers 94-96**
- **Third Street transportation corridor**
- **Hunters Point contamination**
- “Superfund contamination may contaminate surrounding area”
- Transportation
- “Disaster recovery is at risk, emergency response strategy with a focus on at risk community members (seniors)”
- Translation services



# WHAT WE HEARD AT TABLE E

- What assets were missing from the map?
  - Historic + community landmarks near Palou and Third
  - Neighborhood on Hunters Point hilltop
- Additional feedback, comments, or questions?
  - At Piers 94-96: “What happens in a disaster > facilities for community”
  - Contaminated sites + facilities throughout study area
  - Emergency response strategy – community members who have characteristics that will make it hard for them to respond
  - Several languages – translation services
  - Clean water after an event
  - Incorporate census information

# WHAT WE HEARD AT TABLE F



- **Trails on water**
- **Heron's Head Park**
- **Hunters Point Hilltop Park**
- **Bayview Park**
- Parks
- Bayview



- **Third Street Bridge**
- **Southeast Treatment Plant**
- **Caltrain**
- Third Street transport



- **Contamination**
- **Bridges, especially for evacuation mobility**
- **Hunters Point neighborhood**
- Access to hospitals and medical care
- Recology
- No hospitals or medical care
- Need for disaster response at Hunters Point / Candlestick Point

# WHAT WE HEARD AT TABLE F

- What assets were missing from the map?
  - Hilltop Park (Hunters Point)
  - MLK pool at Carroll and Third
  - Schools
  - Senior destinations and services
  - Displacement / assembly areas for emergency response
- Additional feedback, comments, or questions?
  - Evacuation plan for Hilltop
  - Hunters Point community feels left out by the City because of their race and low-income. Need to push the City and USACE to include in the flood study and future adaptation measures.
  - Train contractors from community to do work – involve people in making this with open hand
  - “The industry of San Francisco depends on the southern waterfront”
  - People need to get something out of this work – jobs and livelihood
  - Improve healthcare, food
  - Transportation / disaster response to evacuate out
  - Extend to Hunters Point!
  - More parks, grocery stores, cross-SF buses, and healthy options
  - New entertainment venues >> transportation at risk in emergency

# WHAT WE HEARD AT TABLE G



- **Heron's Head Park**
- **City College**
- **Southeast Community Center**
- **Boys and Girls Club**
- Youth programs
- Aunt Bea's Park (Hunters Point Community Youth Park (field trip, slides),
- *Joelie (Joseph Lee?)*
- Walgreens



- **Southeast Treatment Plant (sewage, flooding)**
- **Housing at Hunters Point Hilltop, down Oakdale/Palou area, BRT, McDonalds and MLK swimming pool**
- **Hunters Point neighborhood**
- Housing near Silver Ave and Topeka Ave
- Heron's Head Park
- Fire department



- **Confluence of Caltrain and PUC facilities near Islais Creek (in the flood zone)**
- **Hunters Point Shipyard**
- **West Point/Hollister Housing**
- Our houses
- Emergency food at food bank

# WHAT WE HEARD AT TABLE G

- What assets were missing from the map?
  - Community centers
  - Schools – Sundown Park
  - Hunters Point gym
  - YMCA
  - Bayview Police Station
  - McDonalds at Third and Wallace
  - Burger King
  - Water taxi at Shipyard
  - YCD
  - APRI
  - Bayview Library – Revere St (Bayview Linda Brooks-Burton Library Branch)
  - Food Co
  - Supersave
  - MLK playground
  - Boys and Girls Club at Hunters Point
  - Wild Oyster Project at Bay Natives
- Additional feedback, comments, or questions?
  - Add schools and food to make map more specific
  - Add street names for entire map, not just major street names

# WHAT WE HEARD AT TABLE H



- **House? (*Added near Topeka Ave. and Silver Ave*)**
- **Bayview Library**
- **Cement facilities at Pier 92**
- **Heron's Head Park**
- **Industrial facilities near head of Islais Creek**



- **Third Street Bridge**
- **Southeast Treatment Plant**
- **Hunters Point-area at head of Yosemite Slough**



- **Sewer outfalls on Islais Creek**
- **Recology**

# WHAT WE HEARD AT TABLE H

- What assets were missing from the map?
  - Bret Harte Elementary School
  - School near Thornton and Bancroft Ave
  - Outfalls (OOF/OF?) at 20th St, 22nd St, Illinois St Bridge, Islais Creek at end of Burke Ave, Evans Ave, Yosemite Slough (2 – relocate one)
  - County line
- Additional feedback, comments, or questions?
  - Sewer Plant effluent v. sewer outfall off Pier 80
  - Schools?
  - Add future park on Yosemite Slough

# FEEDBACK FROM INDIVIDUAL RESPONSE HANDOUTS



- Shoreline Parks and Trails
- Heron's Head Park
- Parks & hilltop views
- Habitat for wildlife
- Parks
- Nature
- Neighborhood community centers
- Boys and Girls Club
- Cultural diversity



- Third Street Bridge
- Southeast Treatment Plant
- Caltrain
- Industrial services
- Recreation, parks, & wildlife
- Roads
- Affordable housing
- Fire station



- Sewer infrastructure
- Impacts on transportation and access to medical care
- Housing
- Community evacuation plan routes
- Recology
- Disaster recovery areas

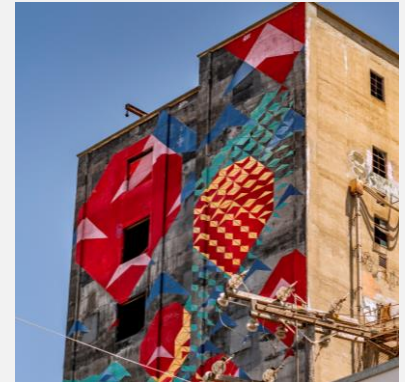


# THEMES FROM ALL THE RESPONSES

- Housing
- Neighborhoods
- Transportation – Muni, Caltrain, and Third Street Bridge
- Utilities
- Job and workforce development
- Water access
- Critical facilities
- Emergency response and recovery
- Parks, open space, bike trails and Bay trails, and recreation centers
- Commercial corridors, small business, and key industries that create jobs
- Southeast Treatment Plant
- Wastewater
- Water quality
- Contaminated lands
- Culture and community
- Senior centers
- Candlestick Point
- Hunters Point
- Bayview
- Food access
- Hospital focus
- Education including City College
- Islais Creek
- Churches and faith-based communities
- Yosemite Slough
- Shoreline parks and Heron's Head
- Maritime operations
- Community centers
- Libraries
- Displacement
- Lack of investment
- Hunters Point Shipyard
- Recology
- Bayview Opera House

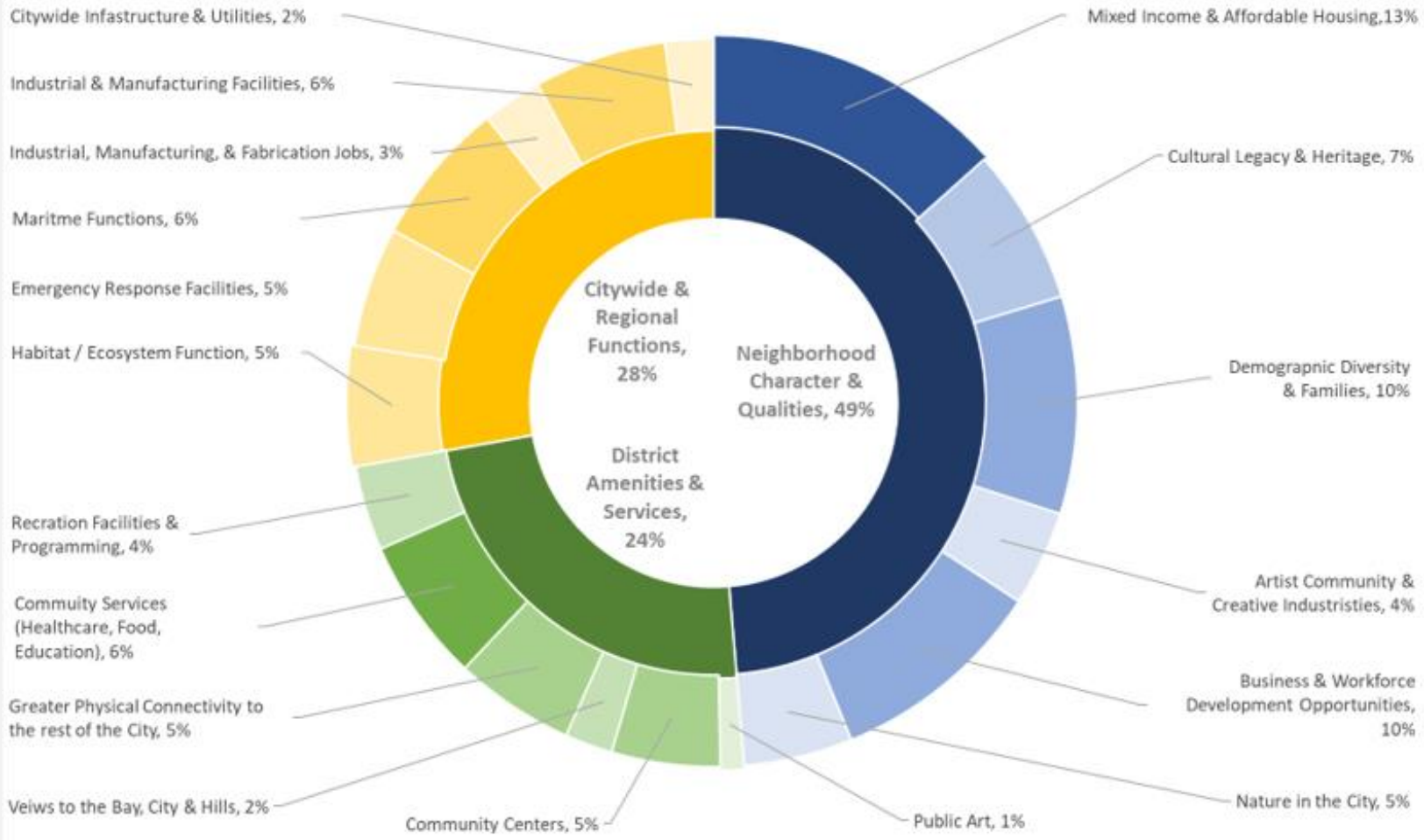
# ADDITIONAL INPUT AND CONCERNS

- Contamination and water quality
- Resilience Team should reflect the diversity of the community
- All forms of flooding – coastal flooding, precipitation, and stormwater
- Desire for a commitment that work generated from the Resilience Program will be available to the community – concern that this has not happened in the past
- Need to provide a lot of opportunities for engagement to reach a broad audience



# WHAT WE HEARD ABOUT PRINCIPLES 7 GOALS FOR FUTURE ISLAIS

*Which Co-Benefits Should Be Prioritized with Transportation?* updated 10/01/2019



# MEETING MATERIALS



## LEARN MORE

Follow the links below to view the meeting presentations and other materials.

- [Community Meeting Presentation](#)
- [Islais / Bayview Resilience Fact Sheet](#)
- [Asset Mapping Base Map \(Game Board\)](#)
- Additional Program information can be found at [sfportresilience.com](http://sfportresilience.com)

# WE HOPE TO SEE YOU AT A FUTURE COMMUNITY MEETING!

