

Total Program	24,471 net sf	27,100 total sf	22,700 net sf
Member Support	12,928	13,450	
Fitness - Weights	3,571	5500	
Cardio / Aerobics / Dance - Studios	2,000	2500	
Library / Lounge	1,429	1300	
TV / Rec Lounge	929	2000	
Active / Recreation Lounge	1,071	850	
Pro Shop	1,071	1300	
Café and Kitchen	1,714		
Program Storage	1,143		
Locker Rooms	9,957	6,200	
Locker Area / Toilets / Interaction	8,571	6200	
Sauna / Spa	1,143		
Unisex Shower / Changing Rooms	243		
Public / Program Support	1,065	2,400	
Office	686	800	
Office Storage	93	1600	
Entrance / Reception	286		
Back of House	521	650	
Janitor	143		
Electrical Room	114		
Mechanical Room	50		
IDF Closet	214		
Miscellaneous / circulation		4,400	
First floor		3400	
Second floor		1000	

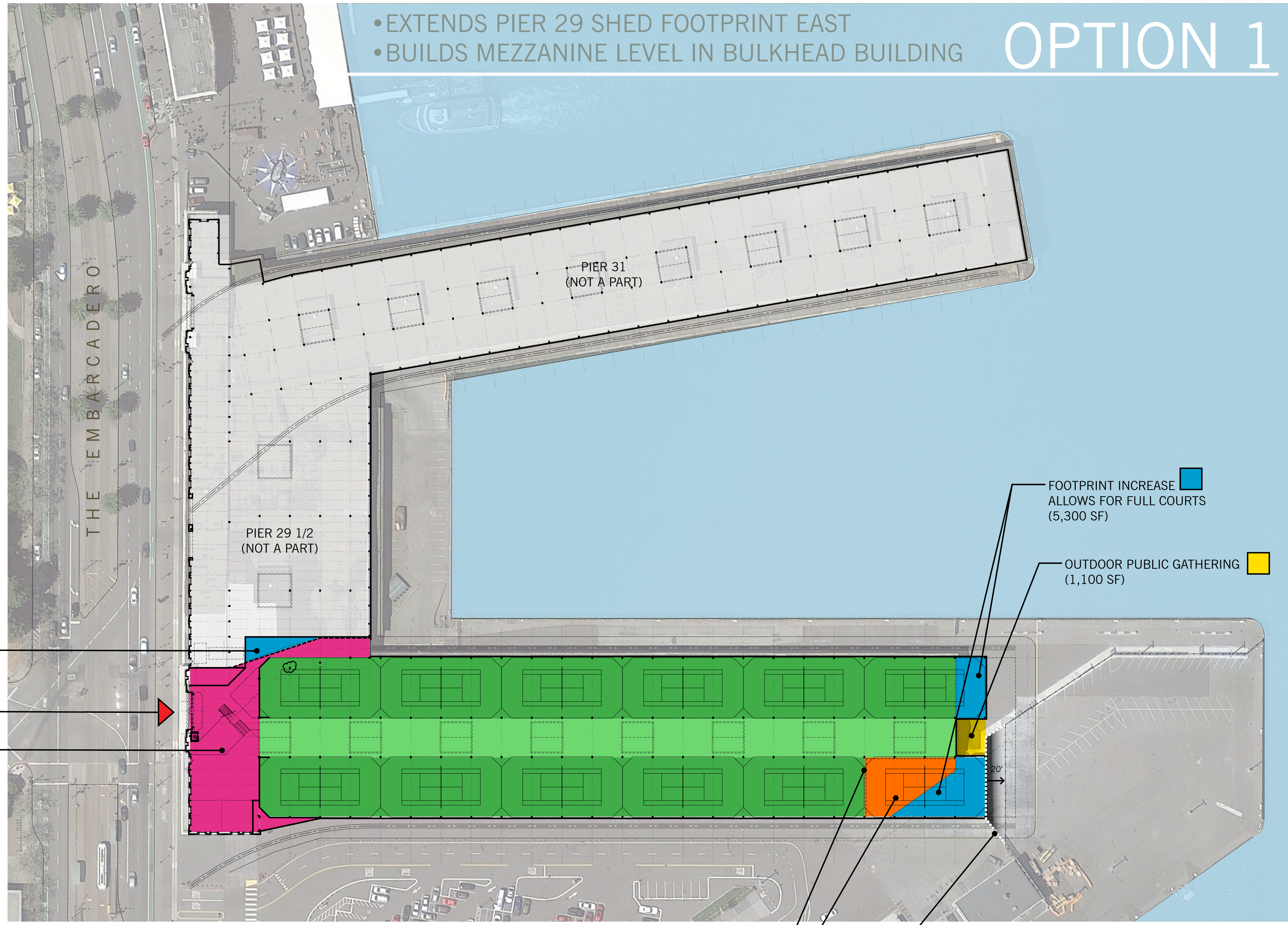
- EXTENDS PIER 29 SHED FOOTPRINT EAST
- BUILDS MEZZANINE LEVEL IN BULKHEAD BUILDING

OPTION 1

ADDITIONAL LEASE AREA
FROM PIER 29 1/2 BUILDING
(+/- 900 SF)

MAIN ENTRY

AVAILABLE PROGRAM SPACE
(+/- 13,500 SF)



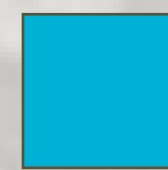
DASHED LINE INDICATES LOW ROOF PORTION OF EXISTING SHED BUILDING

REBUILD ROOF TO ALLOW FULL COURT HEIGHT

APPROXIMATE LOCATION OF FENCE LINE / EASEMENT;
SHIFT 20' EAST FOR PUBLIC ACCESS

FOOTPRINT INCREASE
ALLOWS FOR FULL COURTS
(5,300 SF)

OUTDOOR PUBLIC GATHERING
(1,100 SF)



MEMBER SUPPORT



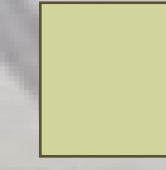
LOCKER ROOMS



PUBLIC / PROGRAM SUPPORT



UTILITY / BACK OF HOUSE



MISCELLANEOUS / CIRCULATION

OPTION 1

FIRST FLOOR

THE EMBARCADERO

MAIN ENTRY

ENTRANCE

RECEPTION
(1,600 SF)

OFFICE
(800 SF)

CAFE
(1,200 SF)

FITNESS
(5,500 SF)

PRO SHOP
(850 SF)

BACK OF
HOUSE
(650 SF)

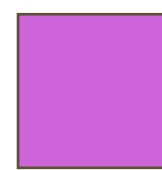
RELOCATE
COLUMN

EXISTING
DEVISING
WALL





MEMBER SUPPORT



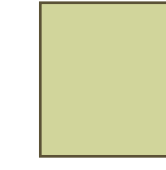
LOCKER ROOMS



PUBLIC / PROGRAM SUPPORT



UTILITY / BACK OF HOUSE

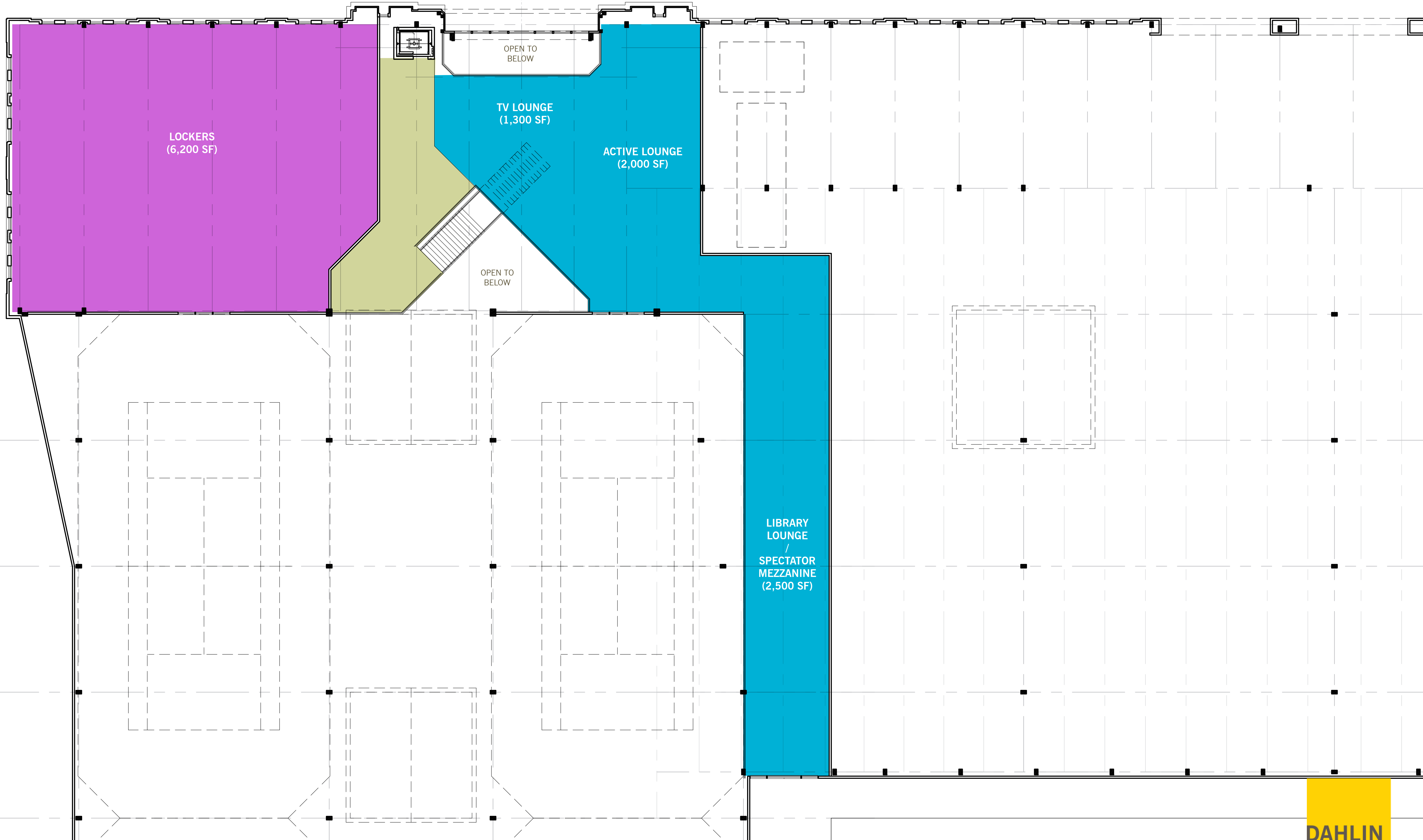


MISCELLANEOUS / CIRCULATION

OPTION 1

SECOND FLOOR

THE EMBARCADERO



Total Program	24,471 net sf	29,150 total sf 25,450 net sf
Member Support	12,928	14,800
Fitness - Weights	3,571	5200
Cardio / Aerobics / Dance - Studios	2,000	
Library / Lounge	1,429	2500
TV / Rec Lounge	929	2000
Active / Recreation Lounge	1,071	2200
Pro Shop	1,071	1100
Café and Kitchen	1,714	1800
Program Storage	1,143	
Locker Rooms	9,957	8,000
Locker Area / Toilets / Interaction	8,571	8000
Sauna / Spa	1,143	
Unisex Shower / Changing Rooms	243	
Public / Program Support	1,065	2,100
Office	686	700
Office Storage	93	
Entrance / Reception	286	1400
Back of House	521	550
Janitor	143	
Electrical Room	114	
Mechanical Room	50	
IDF Closet	214	
Miscellaneous / circulation		3,700
First floor		3700

- EXISTING PIER 29 SHED FOOTPRINT
- ACQUIRES ADDITIONAL LEASE AREA IN PIER 29 1/2

OPTION 2

ADDITIONAL LEASE AREA
FROM PIER 29 1/2 BUILDING
(+/- 22,000 SF)

MAIN ENTRY

AVAILABLE PROGRAM SPACE
(+/- 21,300 SF)

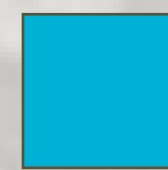
PIER 31
(NOT A PART)

PIER 29 1/2
(NOT A PART)

COVERED OUTDOOR PUBLIC GATHERING
BENEATH EXISTING SHED LOW ROOF
(2,000 SF)

DASHED LINE INDICATES LOW ROOF PORTION OF EXISTING SHED BUILDING

APPROXIMATE LOCATION OF FENCE LINE / EASEMENT;
TO REMAIN



MEMBER SUPPORT



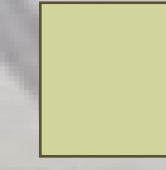
LOCKER ROOMS



PUBLIC / PROGRAM SUPPORT



UTILITY / BACK OF HOUSE



MISCELLANEOUS / CIRCULATION

OPTION 2

THE EMBARCADERO

MAIN ENTRY

FITNESS
(5,200 SF)

ENTRANCE
/
RECEPTION
(1,400 SF)

OFFICE
(700 SF)

BACK OF
HOUSE
(550 SF)

LIBRARY LOUNGE
(2,500 SF)

TV LOUNGE
(2,000 SF)

LOCKERS
(8,000 SF)

SPECTATOR
AREA

CHAMPIONSHIP
COURT 1

PRO SHOP
(1,100 SF)

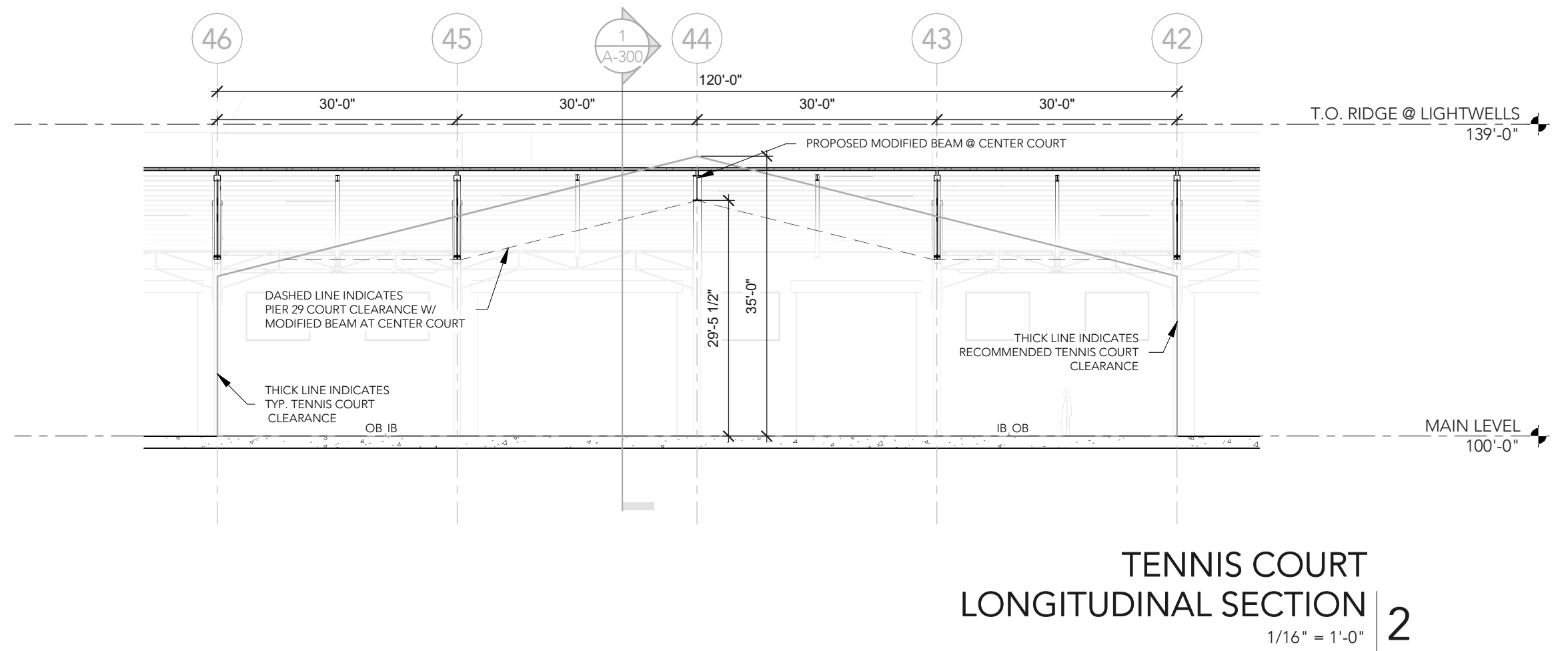
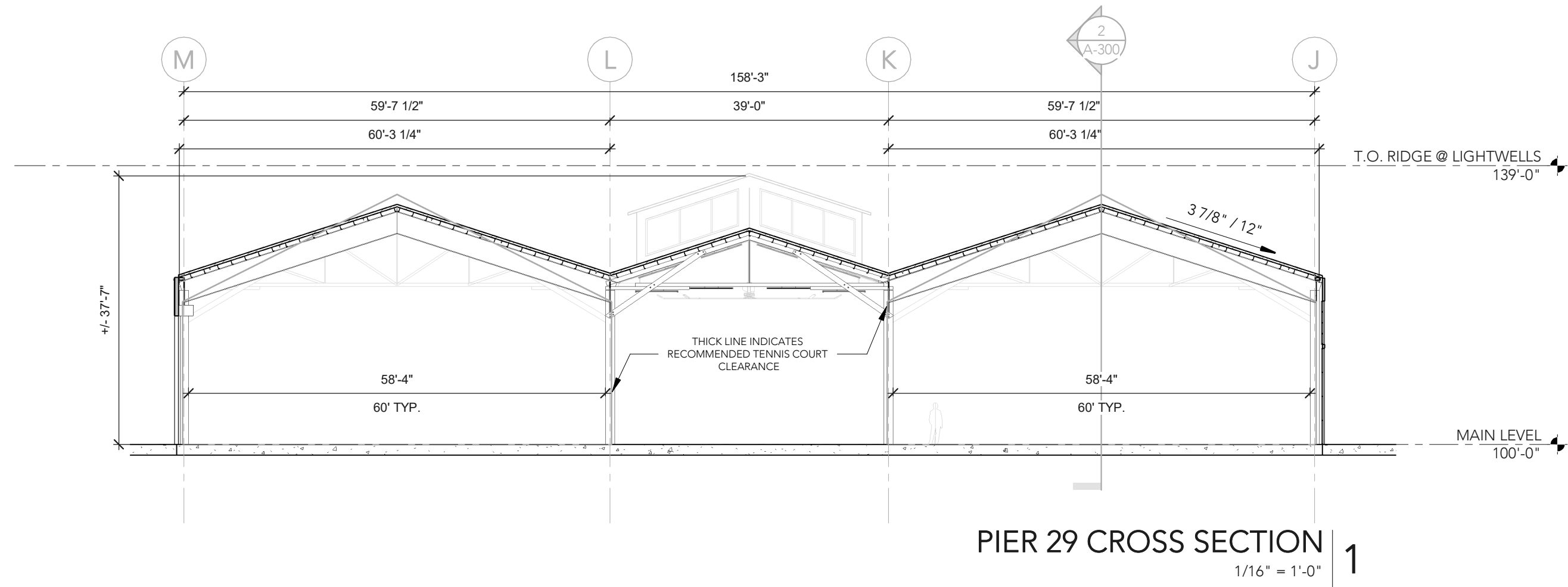
CAFE
(1,800 SF)

HISTORIC RAIL
ALIGNMENT;
HIGHLIGHT AS
CENTRAL
CIRCULATION
SPINE

CHAMPIONSHIP
COURT 2

RELOCATE
COLUMN

ACTIVE LOUNGE
(2,200 SF)

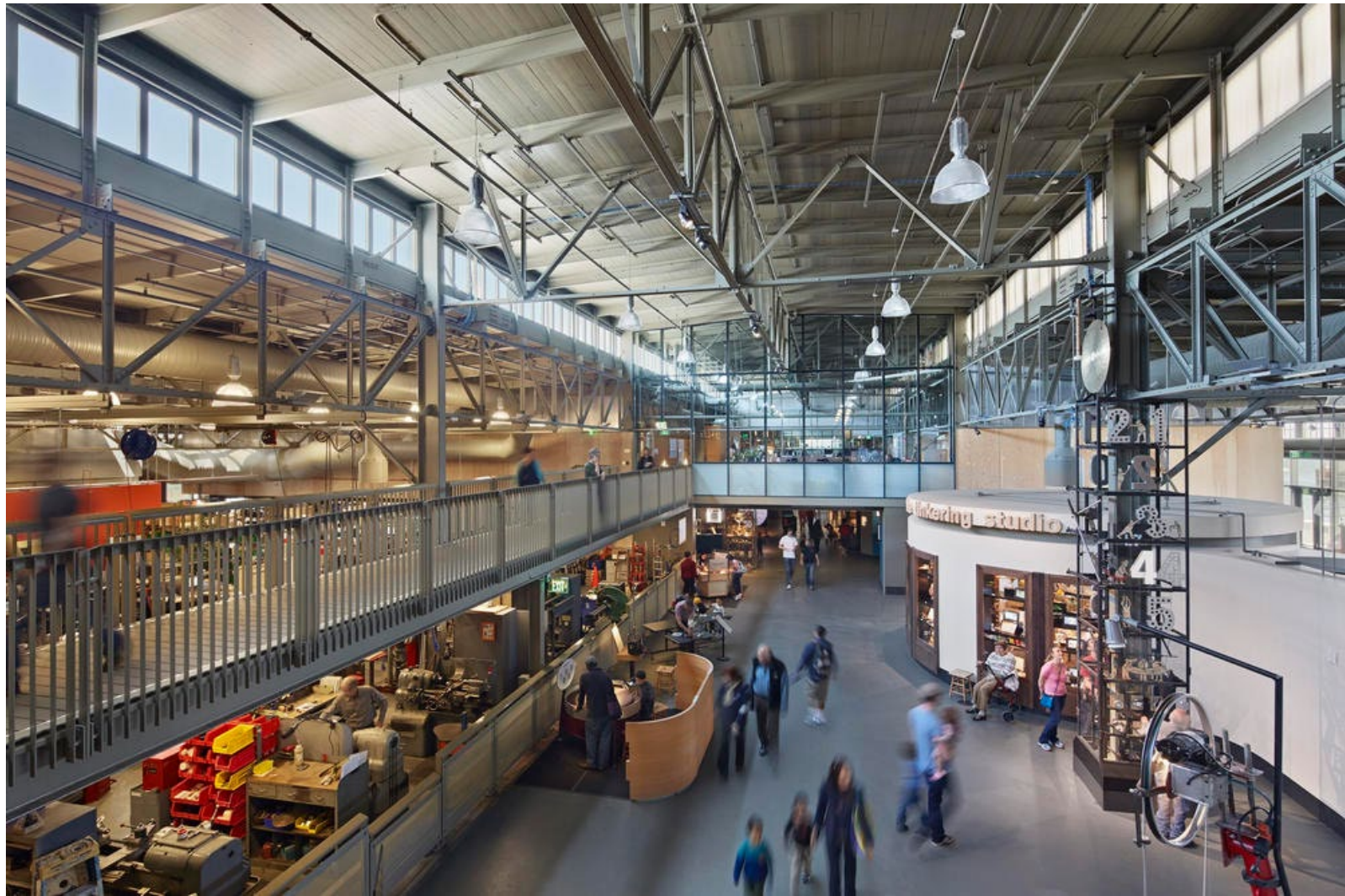








EXPLORATORIUM, SF
(BY OTHERS)



CONTAINER BAR, AUSTIN
(BY OTHERS)



CONTAINER PARK, LAS VEGAS
(BY OTHERS)