

Waterfront Plan Working Group Meeting

Maritime & Water-Dependent Uses

Meeting Agenda

- **Overview of Port Maritime & Water-Dependent Uses**
- **Summary of Maritime Planning and Policies**
- **Q&A and Discussion of Operational Needs — Insights from Maritime Industry Representatives**

Objective — Provide the Working Group, Advisory Teams, and public with background needed for Part 2 Policy Discussions

February 10, 2016

San Francisco Bay – Interconnected System of Ports

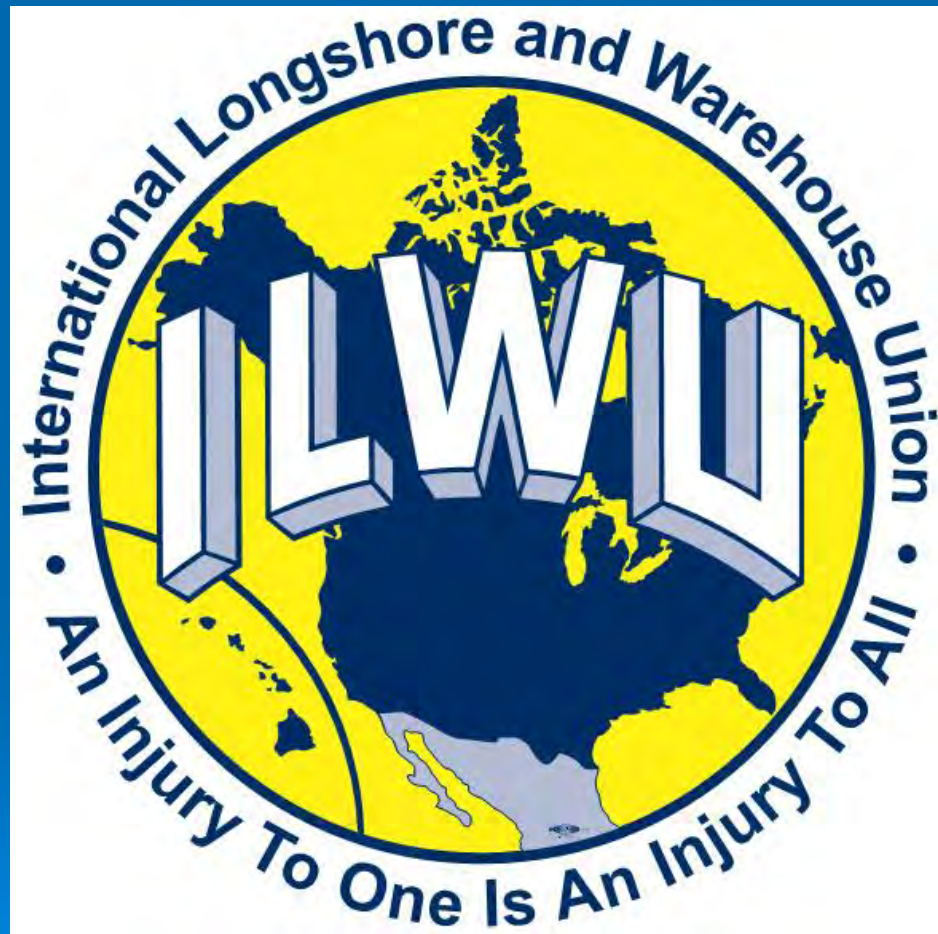
- **Port of San Francisco** – Cargo, Cruise, Ship Repair, Fishing, Excursions, FTZ, Harbor services, Ferries, marinas
 - **Port of Oakland** - Containerized Cargo, Ferries, limited Harbor services, Marina
 - **Port of Richmond** - Automobiles, Bulk cargo, petroleum
 - **Port of Stockton** - Breakbulk, Bulk, Project cargoes
 - **Port of Redwood City** - Bulk cargoes
 - **Port of Benicia** – Automobiles, Bulk cargoes, Petroleum
- 
- An aerial photograph of the Golden Gate Bridge in San Francisco, California. The bridge's red-orange towers and suspension cables are prominent against the blue sky and water. In the distance, the city skyline is visible. A large cargo ship is seen in the water to the right of the bridge. The overall scene is a mix of blue, green, and red tones.

Port's Interconnected Maritime Industries-

1. Cargo Shipping
2. Harbor Services · Lay Berthing
3. Commercial Fishing
4. Public Launch Recreational Marinas
5. Ceremonial · Historic Ships
6. Excursions
7. Ferries
8. Passenger Cruise
9. Ship Repair
10. Water Taxis



San Francisco is the Home of the Modern Port Labor Movement





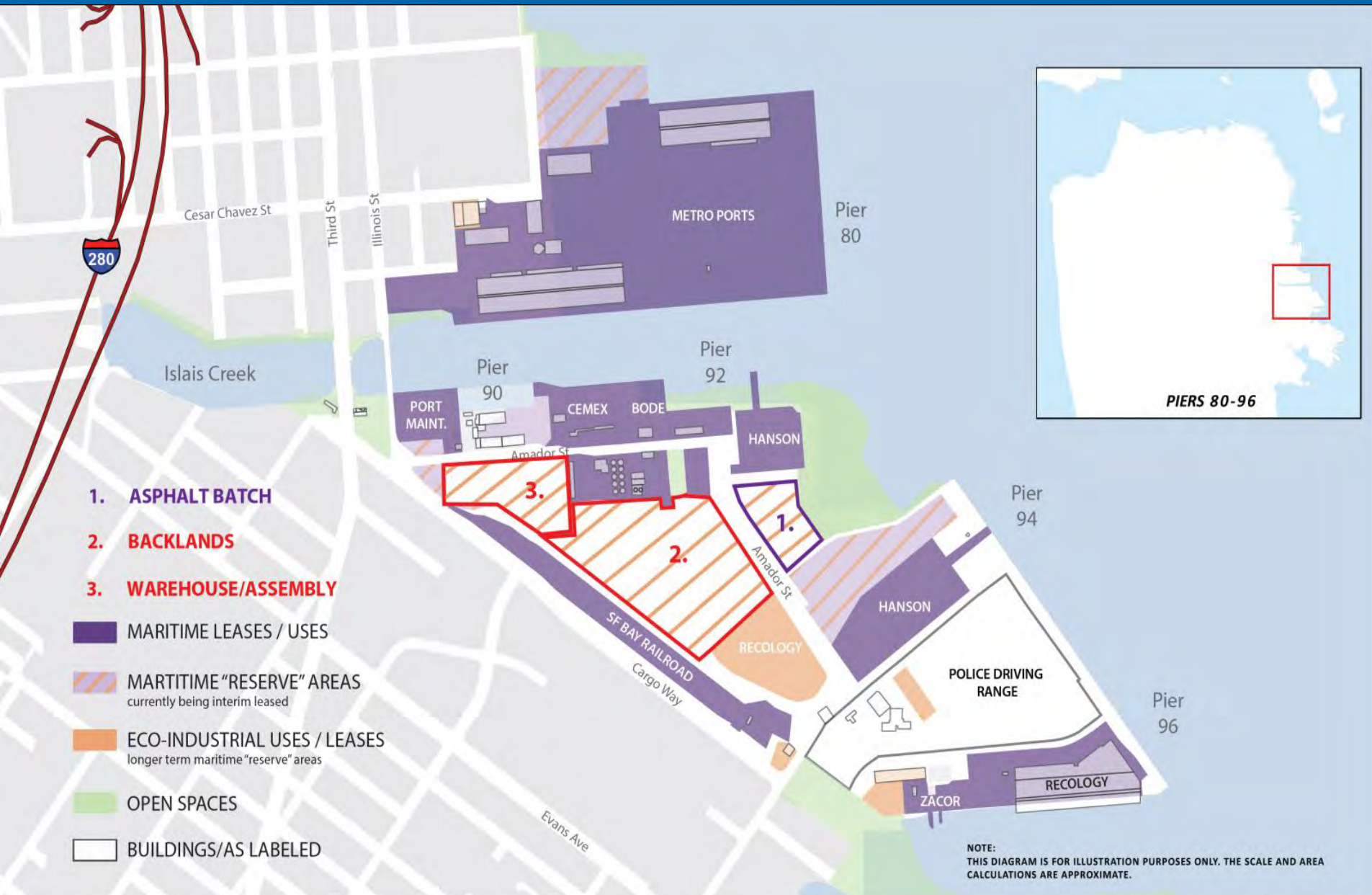
Port of San Francisco

Maritime Cargo Facilities

Cargo: Breakbulk



Eco-Cargo Complex



Cargo: Bulk

Current:

- Aggregate
- Sand
- Liquid Bulk



- Short Sea shipping of Aggregate has taken 35,000 trucks off Bay Area roads annually



Cemex Concrete Batching Marine Terminal



San Francisco Bay Railroad



Cargo Terminals for Emergency Response and Recovery

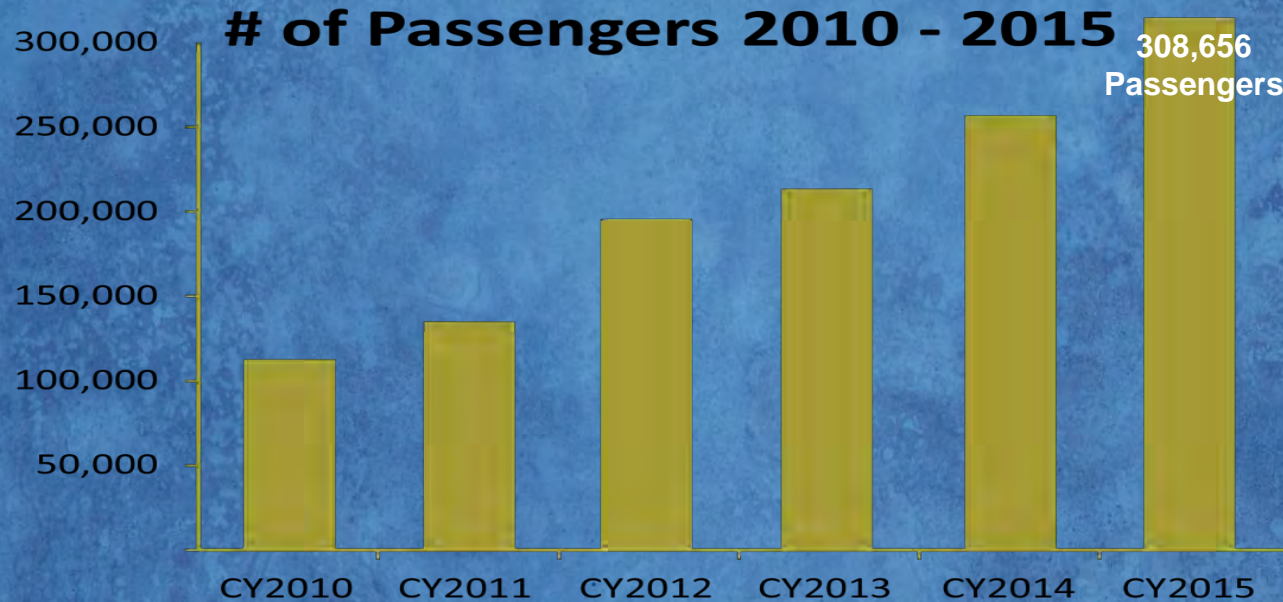


Cruise

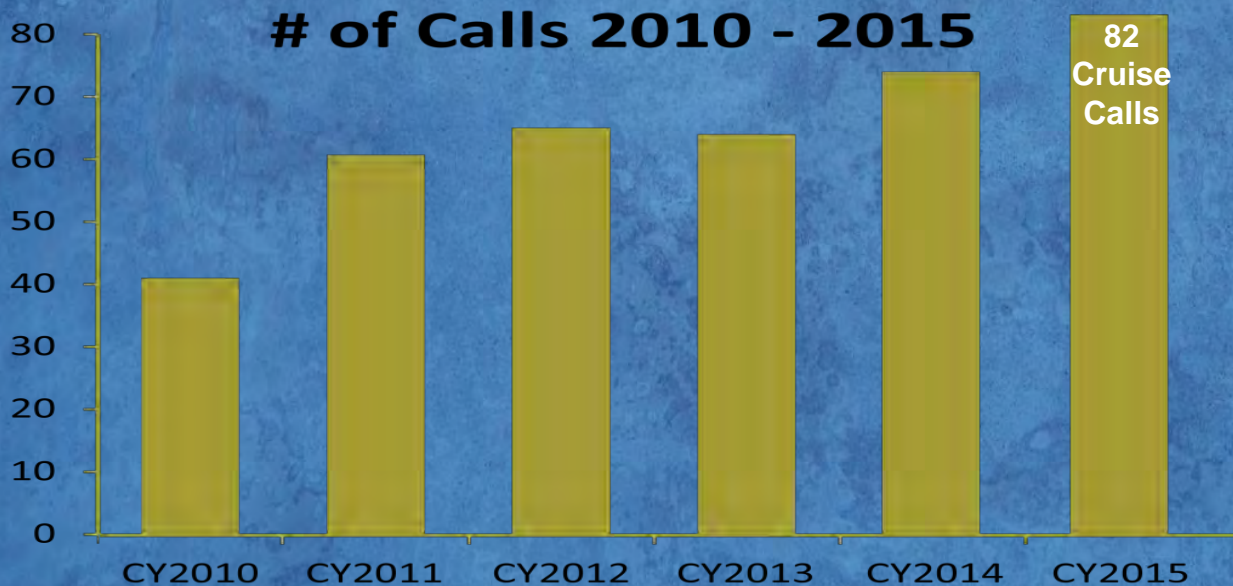


Port of San Francisco

Port of San Francisco Cruise Volumes



- ✓ Alaska
- ✓ Coastal
- ✓ Hawaii
- ✓ Mexico



- ✓ RTW



Pier 27 - James R. Herman Cruise Terminal



First Port in California to Have Shorepower for Cruise Ships

Before



After



Ship Repair



Cruise Ship in Drydock



Port of San Francisco

Ship Repair



Harbor Services



Port of San Francisco

SAGITTARIAN
SAN FRANCISCO



San Francisco Bay Ferries



Port of San Francisco

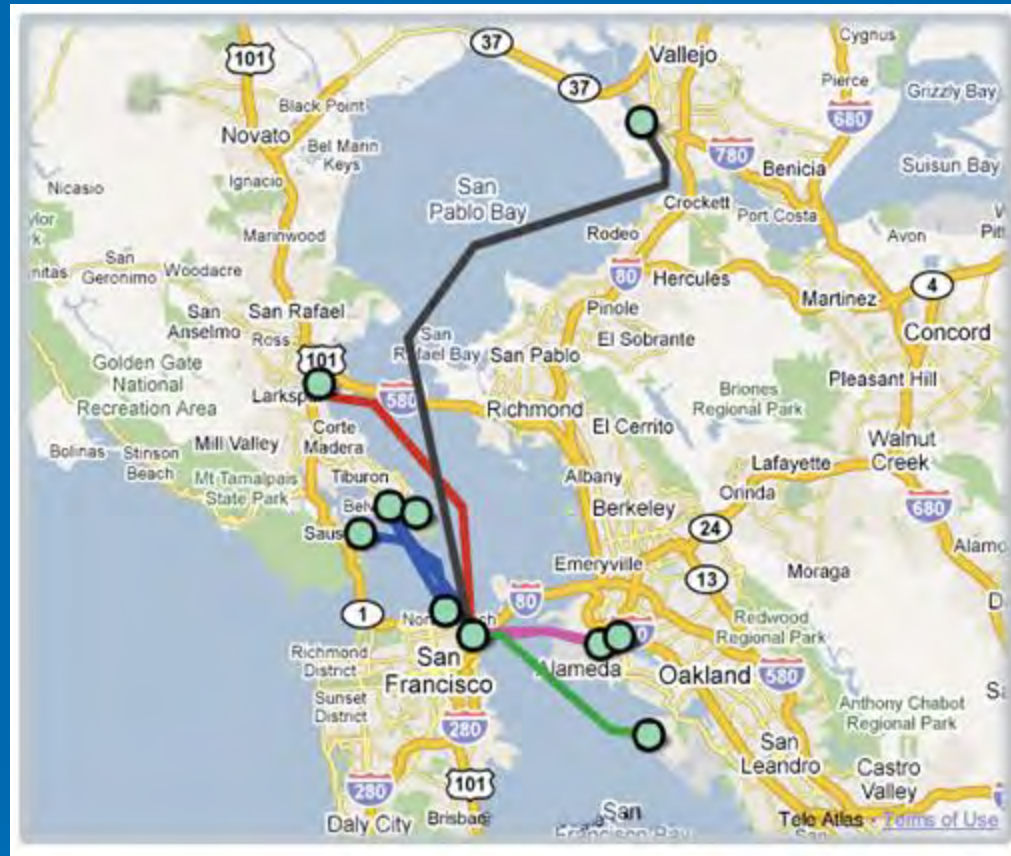
Baydelta's new home at the Exploratorium's Pier 17



Visiting and Historic Ships



Ferries & Excursions



San Francisco Bay Ferry Routes

- ❖ 9 million passengers / year
- ❖ 7 routes, 35 boats / day
- ❖ 365 days / year

Ferry Building Terminals





BLUE & GOLD FLEET San Francisco



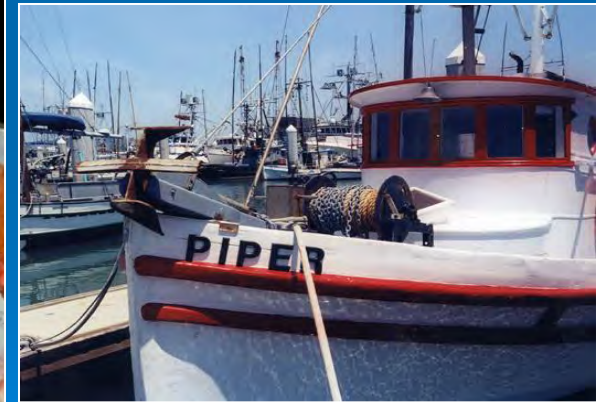


inside-guide-to-san-francisco



Water Taxis

Commercial Fishing and Processing



サンフランシスコ港

Hyde Street Harbor



Pier 45

Modern Fish Processing Facilities at Fisherman's Wharf







SOUTH BEACH HARBOR

The Embarcadero at Pier 40, San Francisco, CA 94107



Other Challenges



Public Access vs Maritime Operations





Human Powered Craft near Shipping Lanes





Dredging Expense



Air Quality
Shoreside Power



ENVIRONMENTAL PROTECTION AND SUSTAINABILITY



Habitat Restoration

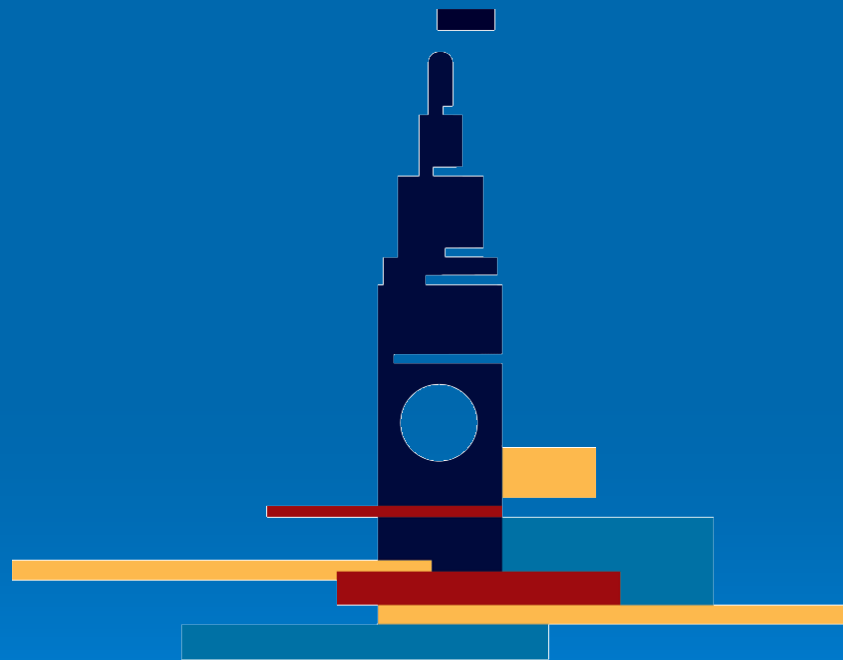


Wastewater and Stormwater



Climate Action

Thank You



PORT OF
SAN FRANCISCO



Waterfront Plan Goal — A Working Waterfront

Port lands should continue to be reserved to meet the current and future needs of cargo shipping, fishing, passenger cruise ships, ship repair, ferry and excursions boats, recreational boating and other water-dependent activities.



General Policies for Existing Maritime Areas

Protect and enhance maritime:

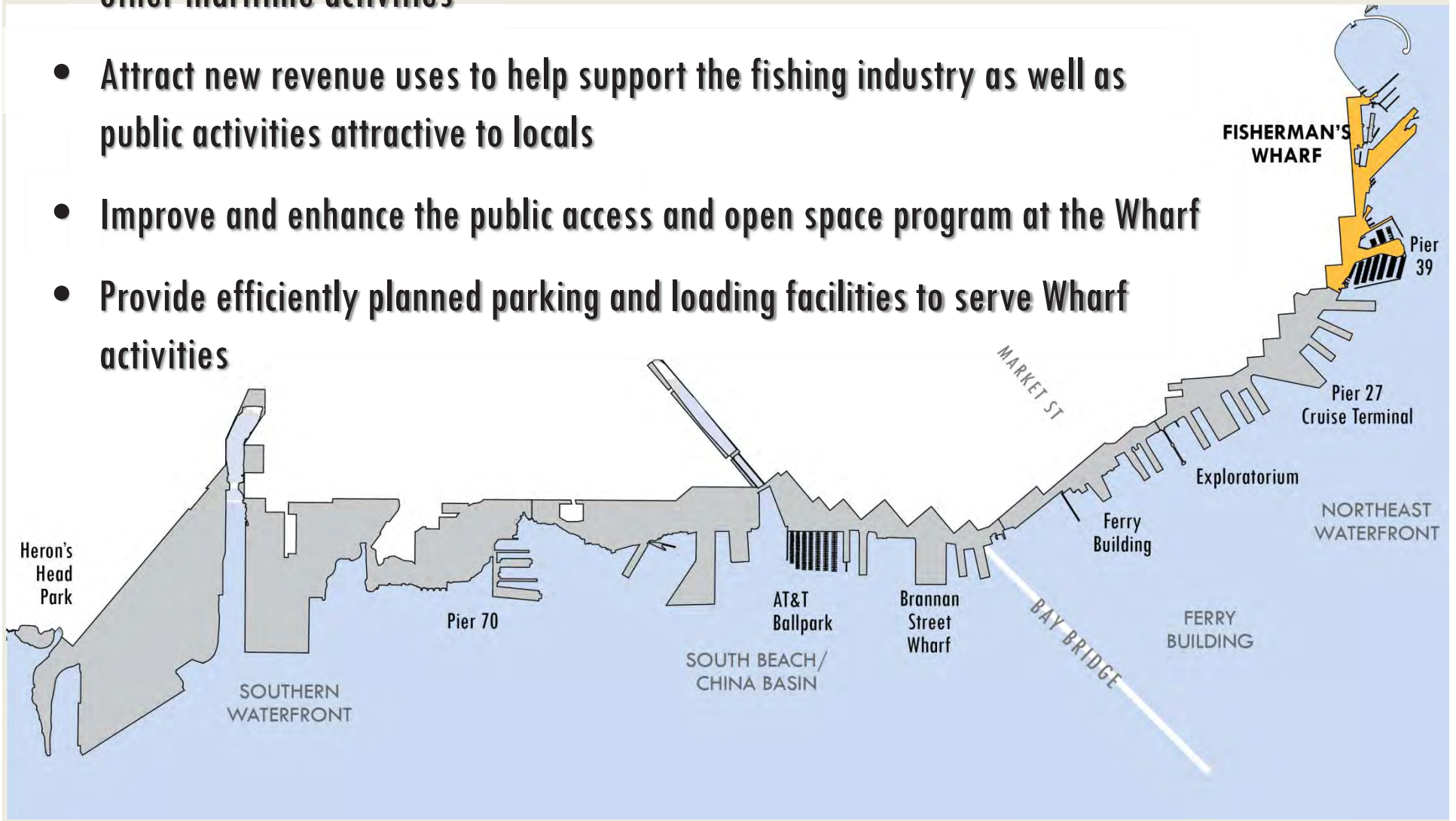
- **Provide lease terms and incentives to support maritime investments**
- **Leverage mixed use projects to provide maritime improvements**
- **Avoid land use conflicts with maritime operations**
- **Protect truck and rail access**
- **Provide public access and views that highlight but don't constrain maritime operations**

General Policies for Maritime Expansion Areas

- **Locate new cargo shipping or ship repair uses south of China Basin**
- **Protect truck routes and rail access in the Southern Waterfront**
- **Allow long term interim uses in the Southern Waterfront to amortize site improvements for future maritime uses**
- **Encourage new commercial/recreational maritime uses and harbor services in mixed use projects north of China Basin**
- **Integrate new public access and views, where compatible**

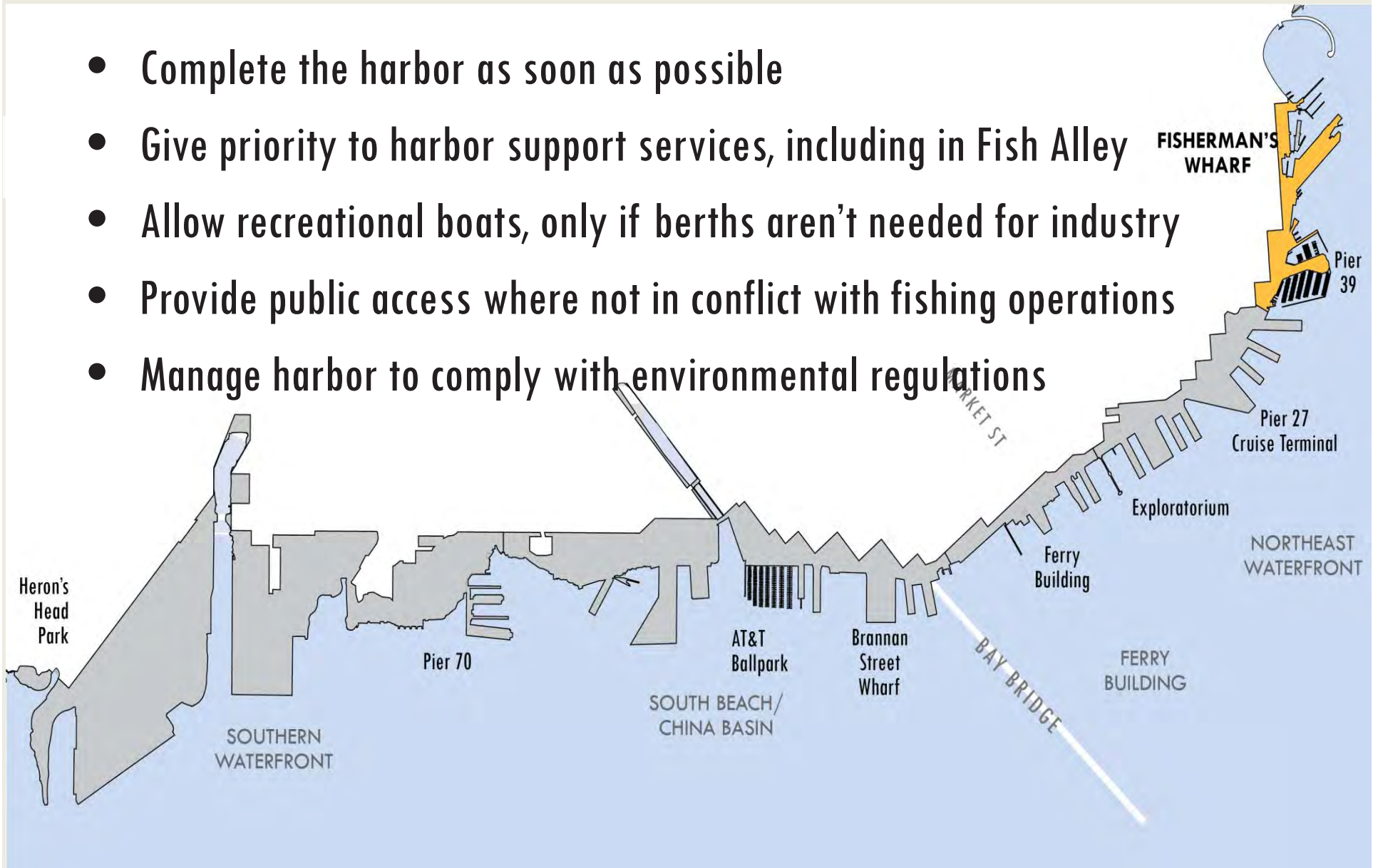
Waterfront Plan Subarea Objectives - Fisherman's Wharf

- Restore and expand the working fishing port; provide expansion space for other maritime activities
- Attract new revenue uses to help support the fishing industry as well as public activities attractive to locals
- Improve and enhance the public access and open space program at the Wharf
- Provide efficiently planned parking and loading facilities to serve Wharf activities



Maritime Development Standards - Hyde Street Harbor

- Complete the harbor as soon as possible
- Give priority to harbor support services, including in Fish Alley
- Allow recreational boats, only if berths aren't needed for industry
- Provide public access where not in conflict with fishing operations
- Manage harbor to comply with environmental regulations



Maritime Commerce Advisory Committee (1999)

- Advises the Port about the needs of its maritime industries
- Includes representatives from cargo, ship repair, excursion, harbor service, and other maritime industries
- Provides a forum to address operational needs of maritime businesses and strategies to manage compatibility with nearby uses
- Facilitates collaboration among industries (e.g. Port Eco-Industrial Center, Pier 70 improvements for cruise ship repairs)
- Participates in the City's planning processes of City (Mayor's Office, Board of Supervisors, Planning Dept., MTA) and regulatory agencies.
- Supports ongoing market analyses and planning for maritime uses

San Francisco Bay Water Trail



TRANSPORTATION



ACCOMPLISHMENTS

UNDERWAY

NEXT

TIMELINE FOR WATERFRONT PLAN UPDATE

2015

Oct

Nov

Dec

2016

Jan

Feb

Mar

Apr

May

June

July

Aug

Sept

Oct

Nov

Dec

2017

Jan

Feb

Mar

Apr

Waterfront Plan Working Group Public Meetings

Portwide Issues

Subarea Planning

Part I: Orientation & Initial Discussions

Part 2: Policy Discussions

Part 3: Northeast & South Beach

Part 4: Port Staff Work

Nov 17
Waterfront Plan Overview

Meetings to discuss and develop Working Group recommendations

Site Tours
Acceptable Land Uses
Policy Discussion

Draft Waterfront Plan amendments

Jan 13
Port Governance Overview

Feb 10
Maritime & water dependent uses

Mar 9
Port Financial

Mar 23/Apr 13
Historic District, Pier Condition, Resiliency

April 27
Open Space, Design & Historic Preservation

May 11
Port Real Estate & Dev't

June 1
Transportation

Oct 2016
Preliminary Recommendations on Portwide Issues

Spring 2017
Final Working Group Recommendations

Define review and approval next steps/schedule

Oct
Waterfront Visioning & Boat Tour

Anticipated Port Commission Briefings:

- ◆ May/June 2016
- ◆ Oct/Nov 2016
- ◆ Mar 2017





Waterfront Plan Update POLICY ISSUES

www.sfport.com/wlup
Waterfront Plan Update Project

SEA LEVEL RISE

How should the Port manage and prepare for climate change and sea level rise?

SEISMIC SAFETY

How should the Port strengthen the 4-mile Embarcadero seawall and improve seismic safety?

ENVIRONMENT

How should the Port update policies for environmental protection and sustainability?

HISTORIC RESOURCES & PORT FACILITIES

How should the Port prioritize investments in repair, maintenance and replacement of Port facilities, including historic resources?

OPEN SPACE

How can we expand recreational open space activities? How do we improve the Embarcadero Promenade and public realm that complement transportation improvements?

MARITIME BERTHING

How do we balance the needs of maritime berthing and accommodate more public access on piers?

TRANSPORTATION

How can we prioritize transportation services and improvements?

DEVELOPMENT

How much is left to develop, what are the priorities for such development, and how can the review process be improved?

FINANCES

What are the Port's existing and future revenue sources? How does the capital and budget process advance Waterfront Plan objectives?

Policy Issues

- How should we balance maritime berthing and public access?
 - Land-side conflicts (physical access vs. security and operations)
 - Water-side conflicts (industrial vs. recreational water users)
- Ongoing work: Preserving the integrity of the Port maritime operations amidst changing land use patterns in the City
- What else?