



San Francisco  
Water  
Power  
Sewer  
Commission

**SEWER  
SYSTEM**  
IMPROVEMENT PROGRAM  
Grey. Green. Clean.

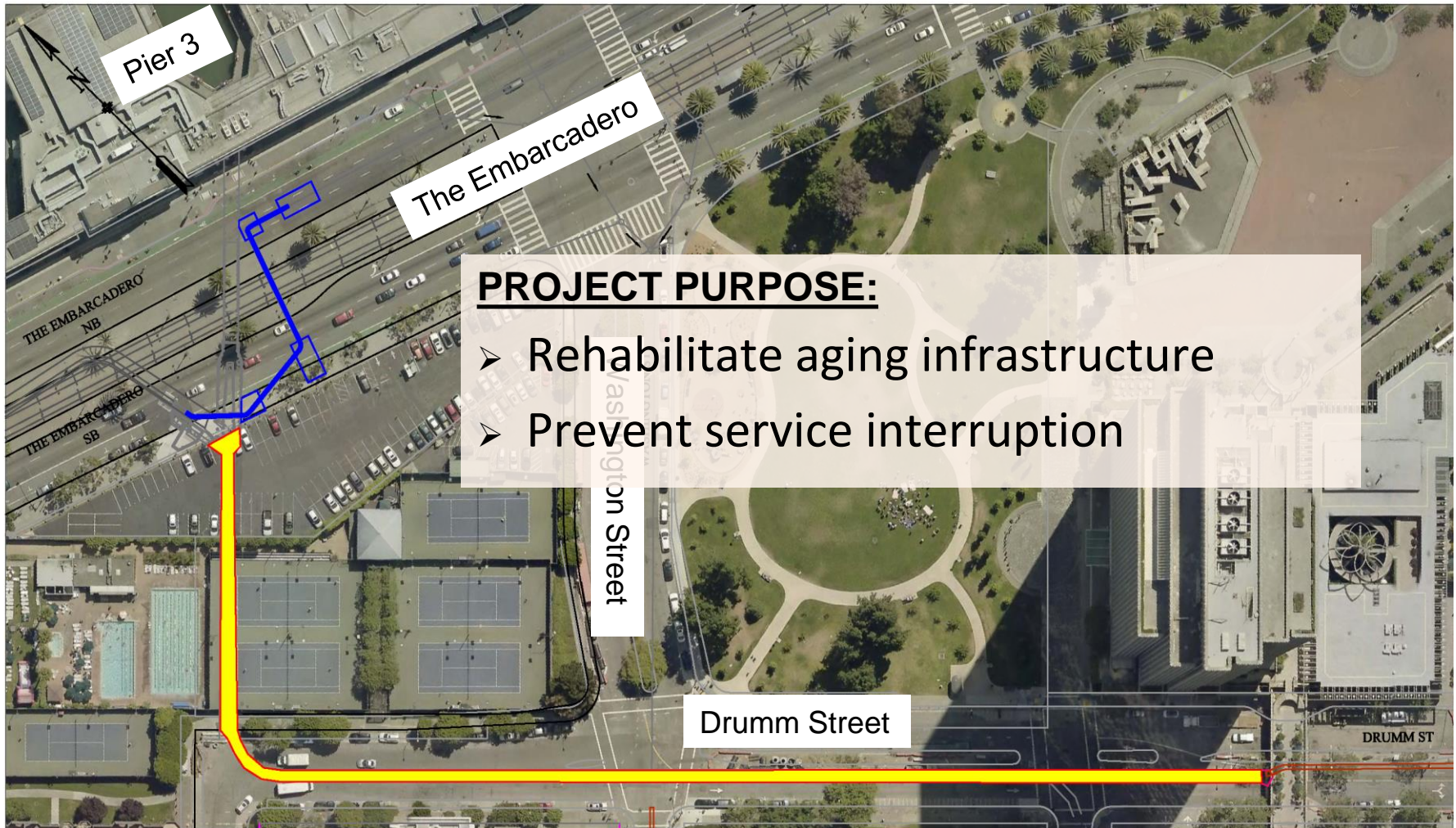
# SFPUC SSIP Project: THE EMBARCADERO/DRUMM & JACKSON STREETS SEWER IMPROVEMENTS

## Presentation to the Central Waterfront Advisory Group

May 1, 2017



# PROJECT OVERVIEW

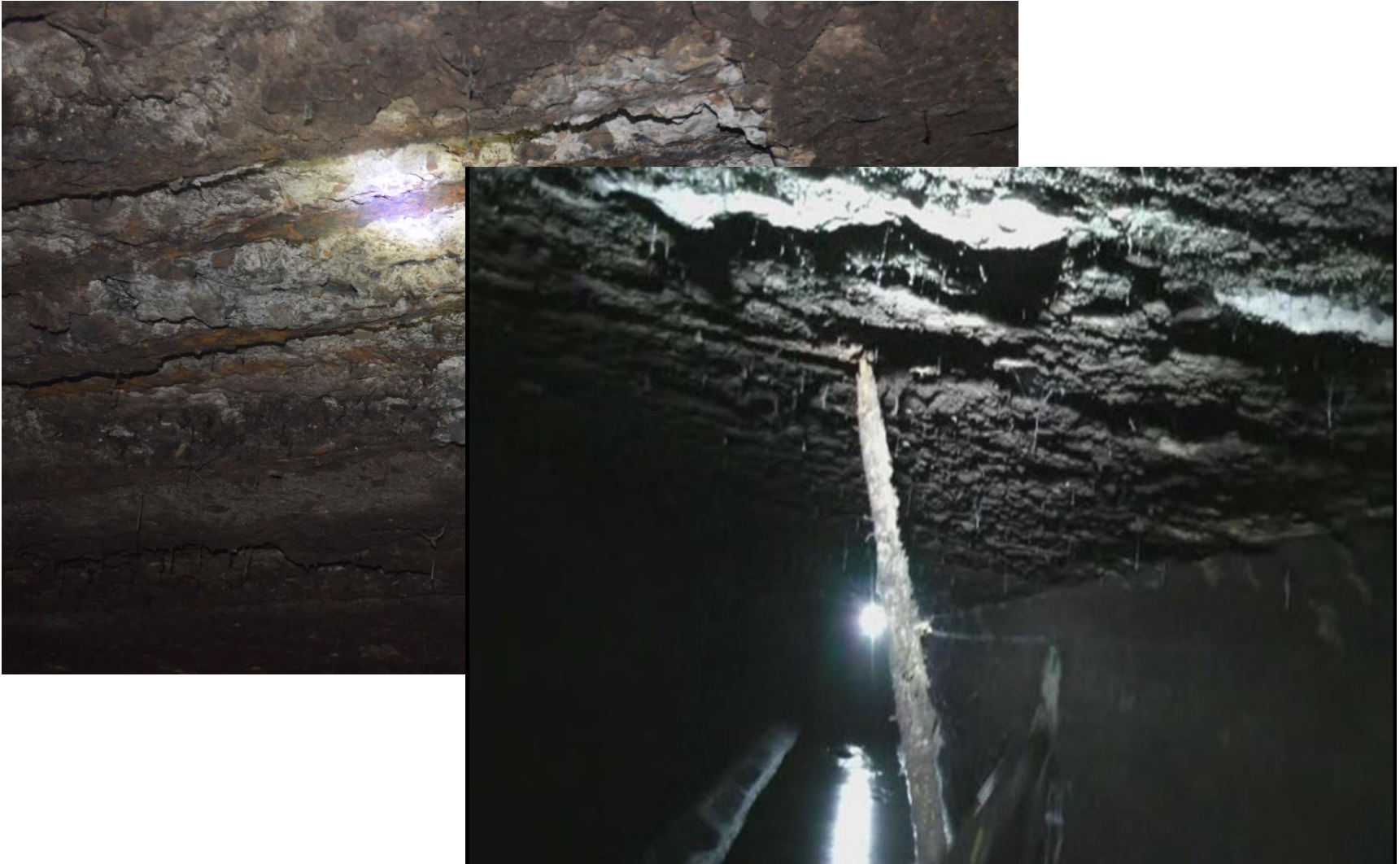




# EXISTING FORCE MAIN: CORROSION

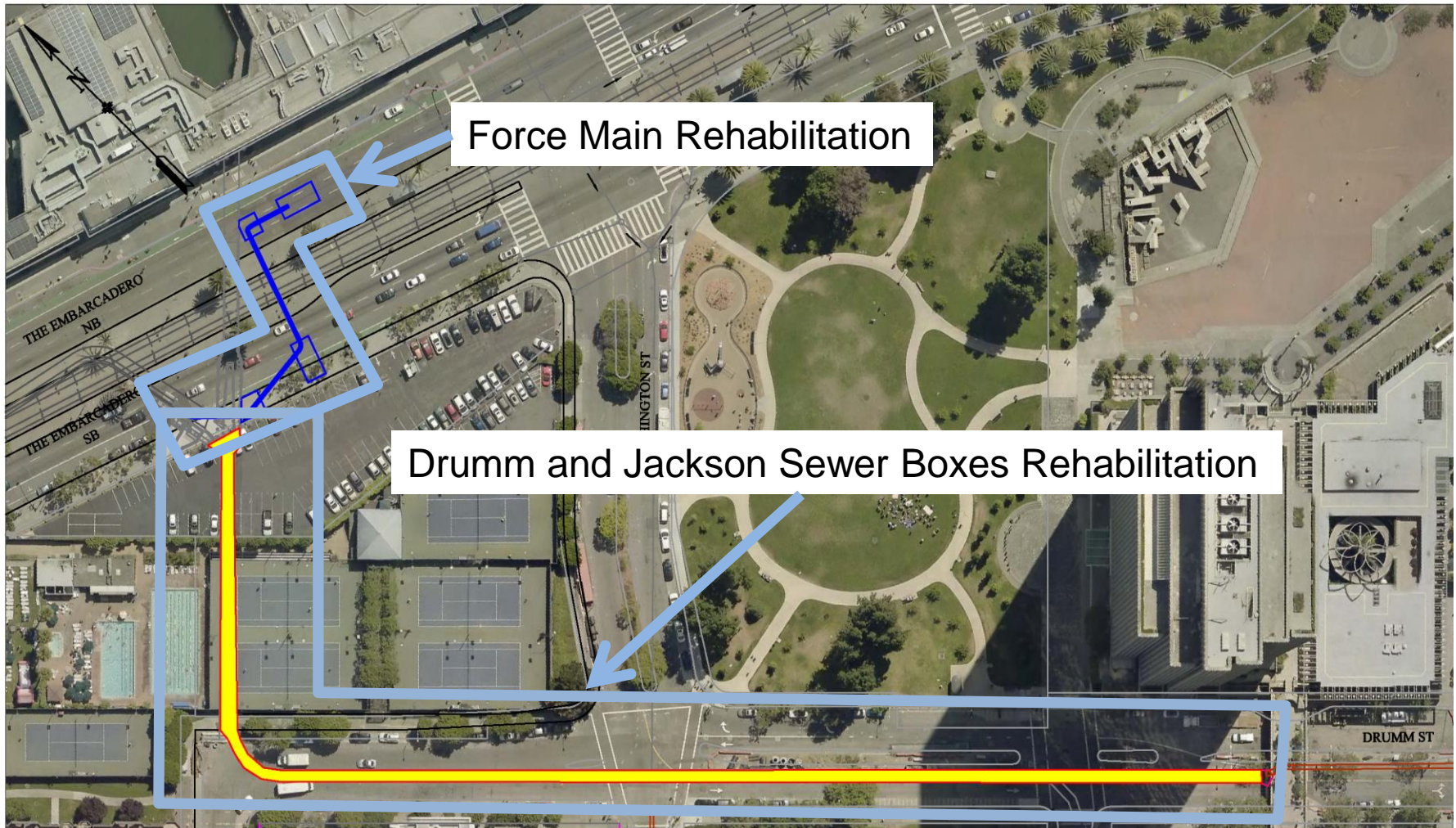


# EXISTING SEWER BOXES ON DRUMM/JACKSON





# PROJECT OVERVIEW



# CONSTRUCTION APPROACH

---



[sfwater.org/ssip](https://sfwater.org/ssip)

[ssip@sfwater.org](mailto:ssip@sfwater.org)

[sfwater.org](https://sfwater.org)



Pit #1

Pit #2

Valve Vault

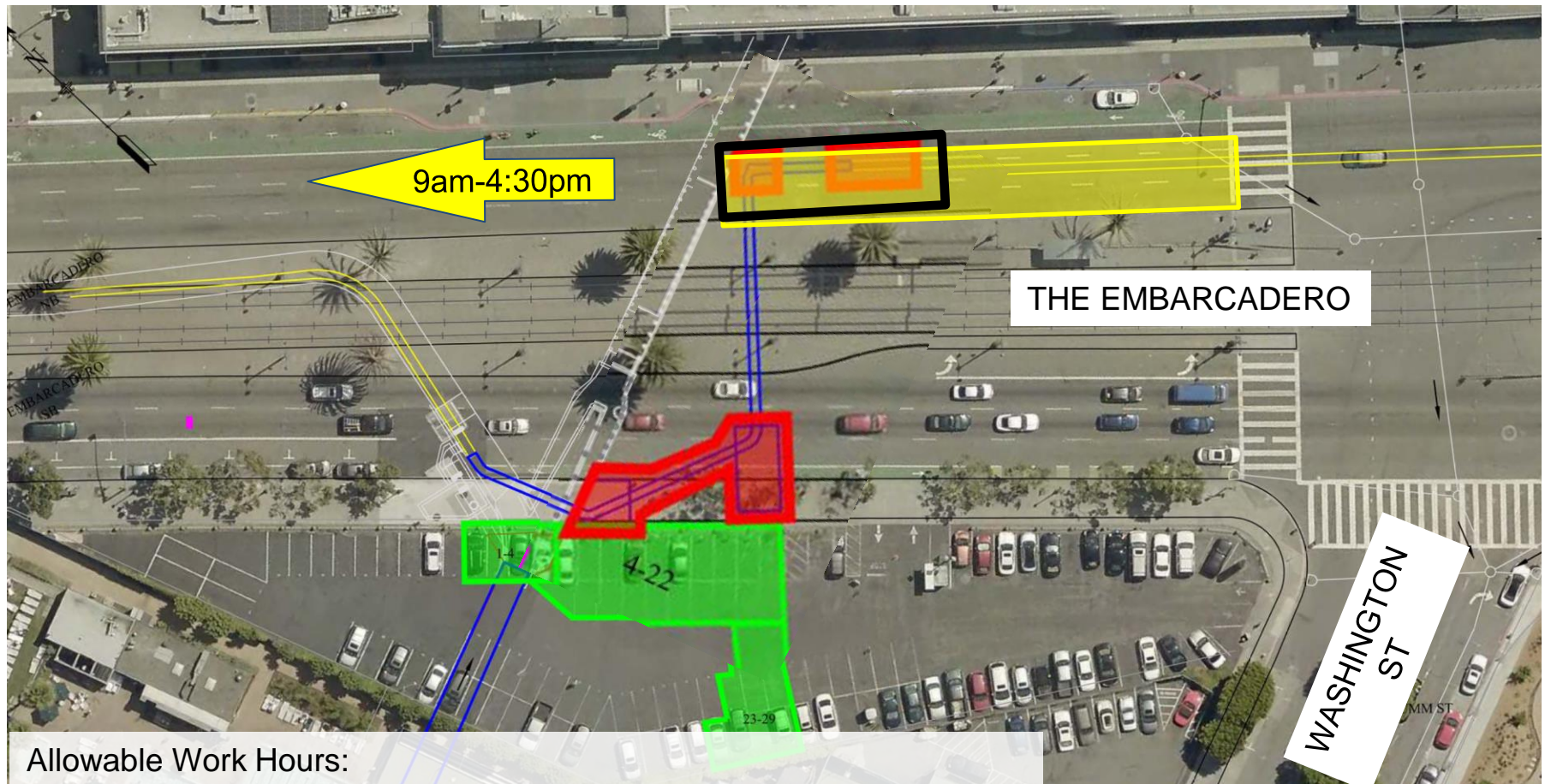
Pit #3

THE EMBARCADERO

WASHINGTON ST

RUMM ST

# THE EMBARCADERO (Area 1) : Work Hours



Allowable Work Hours:

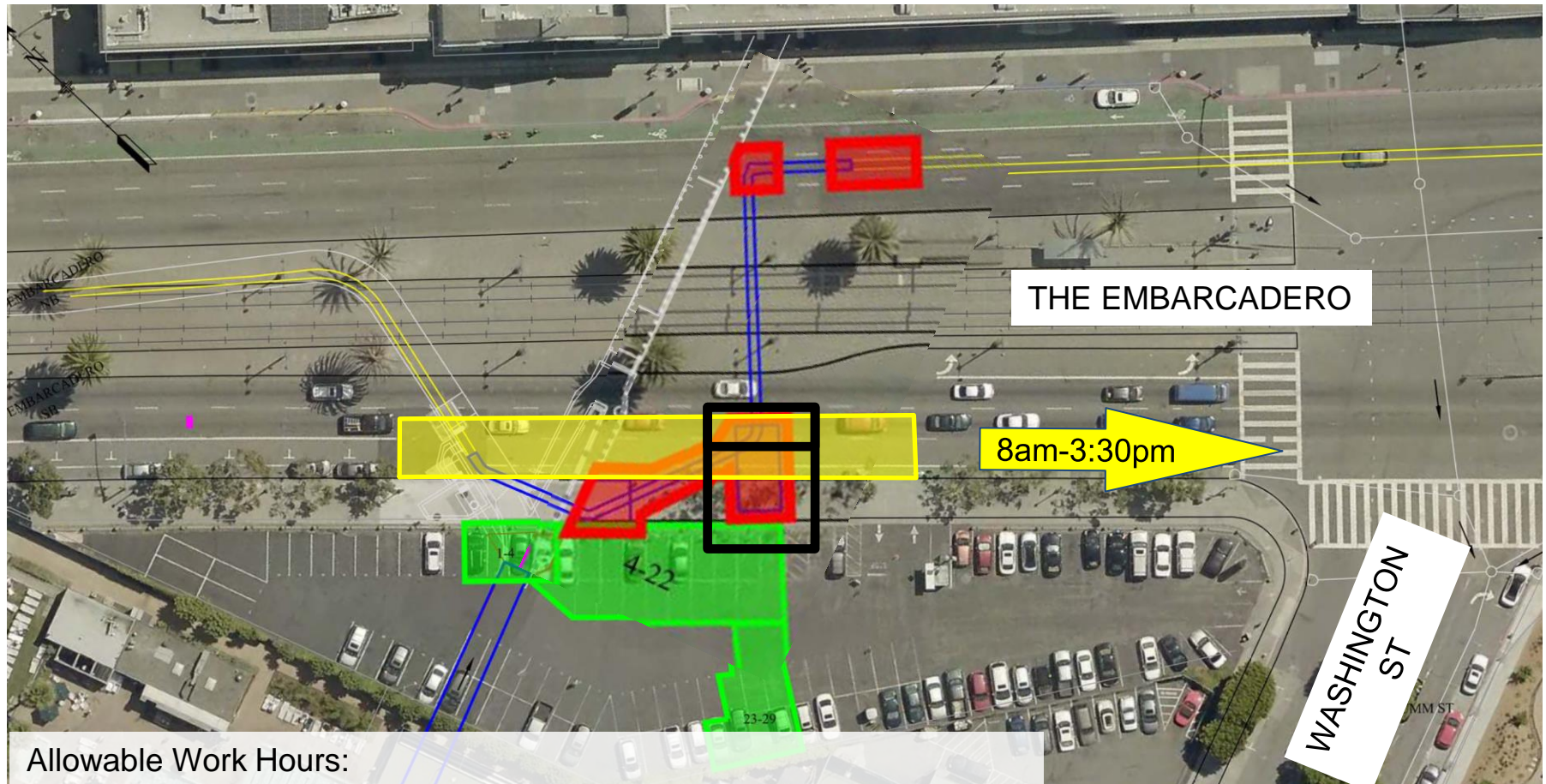
NB Lanes: 1 lane of traffic, M-F, 9:00am-4:30pm

**All Lanes of traffic will be open outside of the above work hours.**

- = Open Cut Excavation
- = Space needed in SWL 351
- = Contractor Work Space



# THE EMBARCADERO (Area 2) : Work Hours



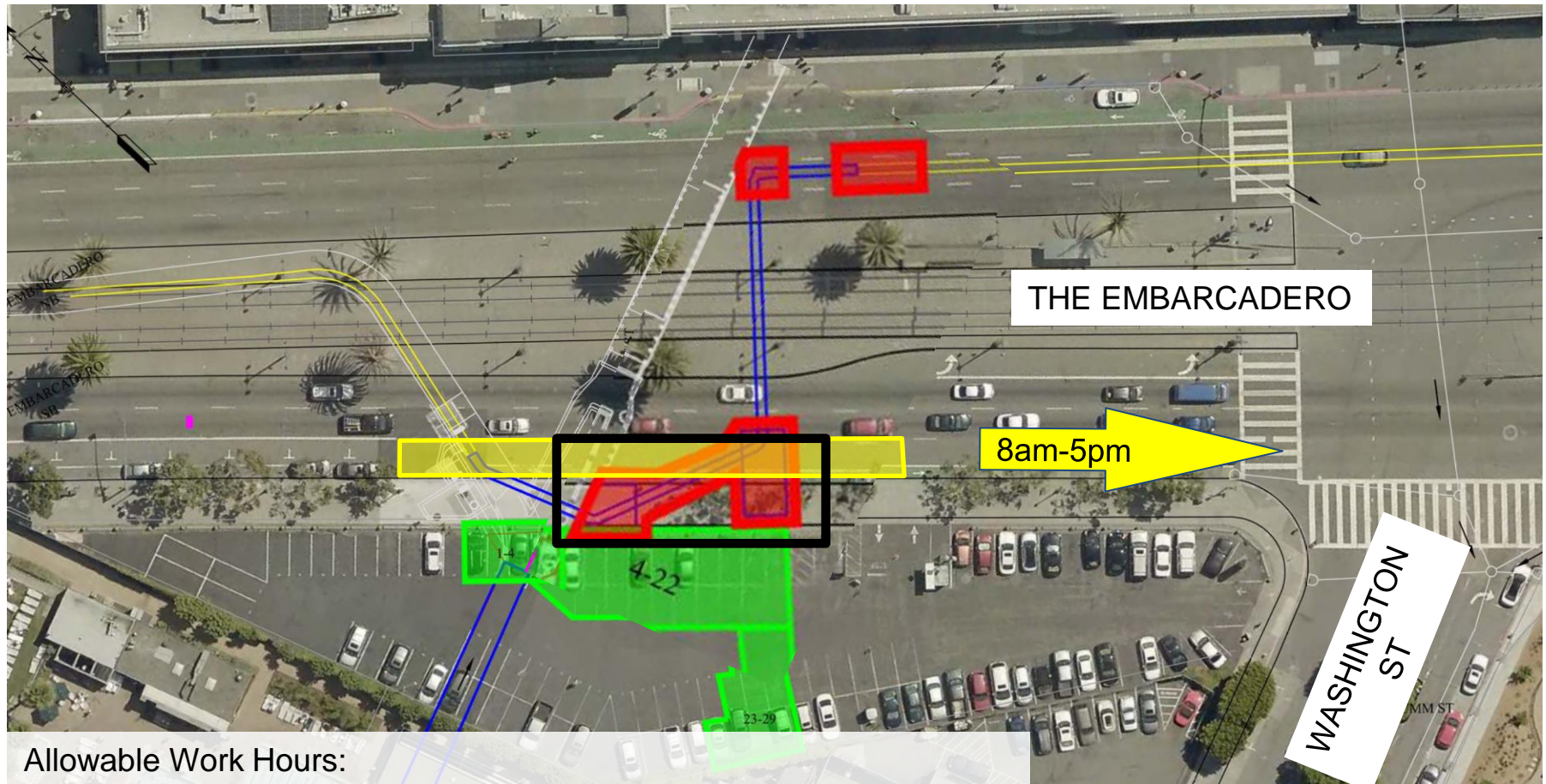
Allowable Work Hours:

SB Lanes: 1 lane of traffic, M-F, 8:00am-3:30pm

**All Lanes of traffic will be open outside of the above work hours.**

- = Open Cut Excavation
- = Space needed in SWL 351
- = Contractor Work Space

# THE EMBARCADERO (Area 2) : Work Hours



Allowable Work Hours:

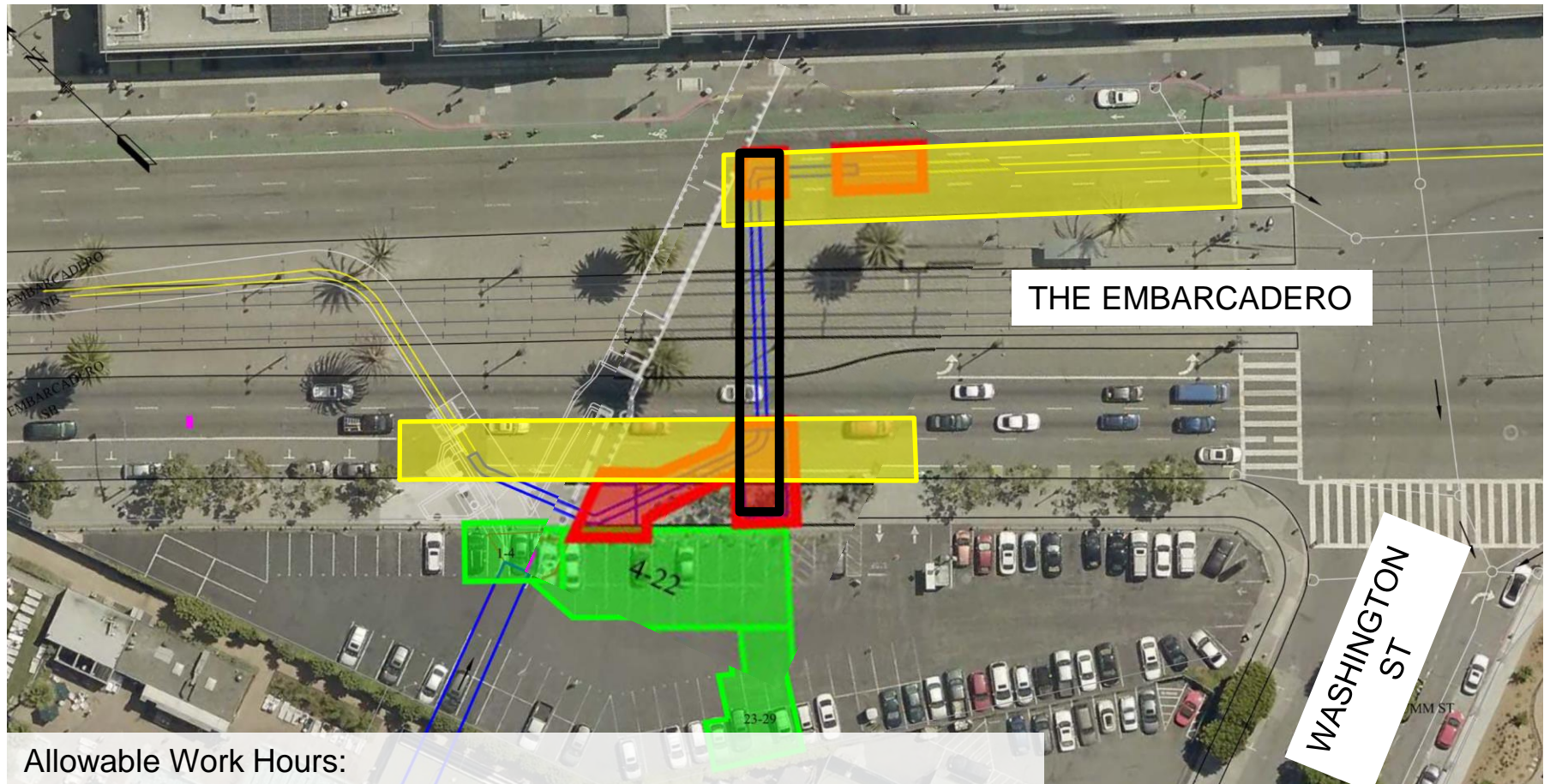
SB Lanes: 2 lanes of traffic, M-F, 8:00am-5:00pm

**All Lanes of traffic will be open outside of the above work hours.**

- = Open Cut Excavation
- = Space needed in SWL 351
- = Contractor Work Space



# THE EMBARCADERO (Area 3) : Work Hours



Allowable Work Hours:

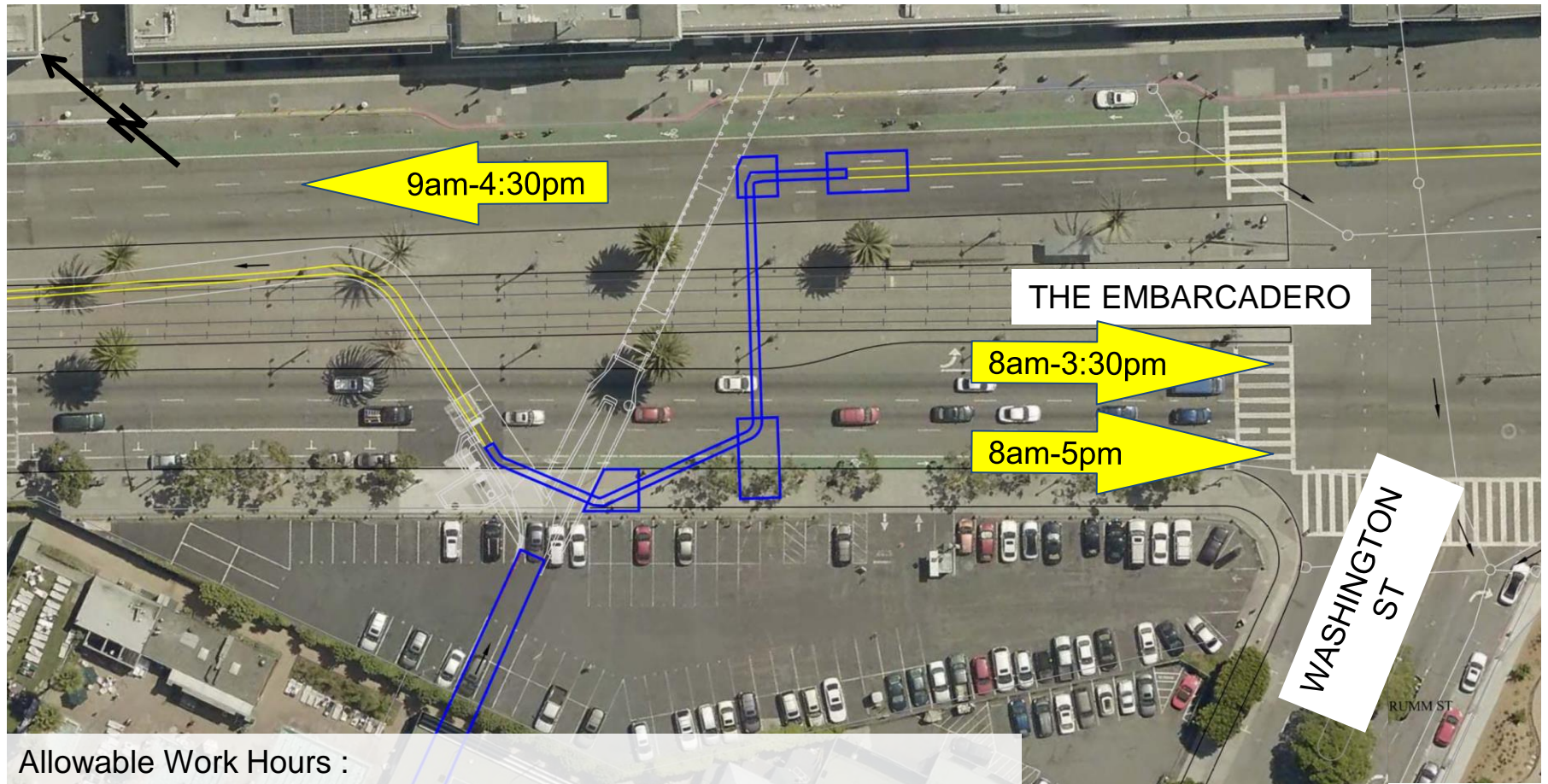
Slipline Work: 9:00pm – 5:00am

NB Lanes: 1 lane of traffic

SB Lanes: 1 lane of traffic

- = Open Cut Excavation
- = Space needed in SWL 351
- = Contractor Work Space

# THE EMBARCADERO: Work Hours



Allowable Work Hours :

NB Lanes: 1 lane of traffic, M-F, 9:00am-4:30pm

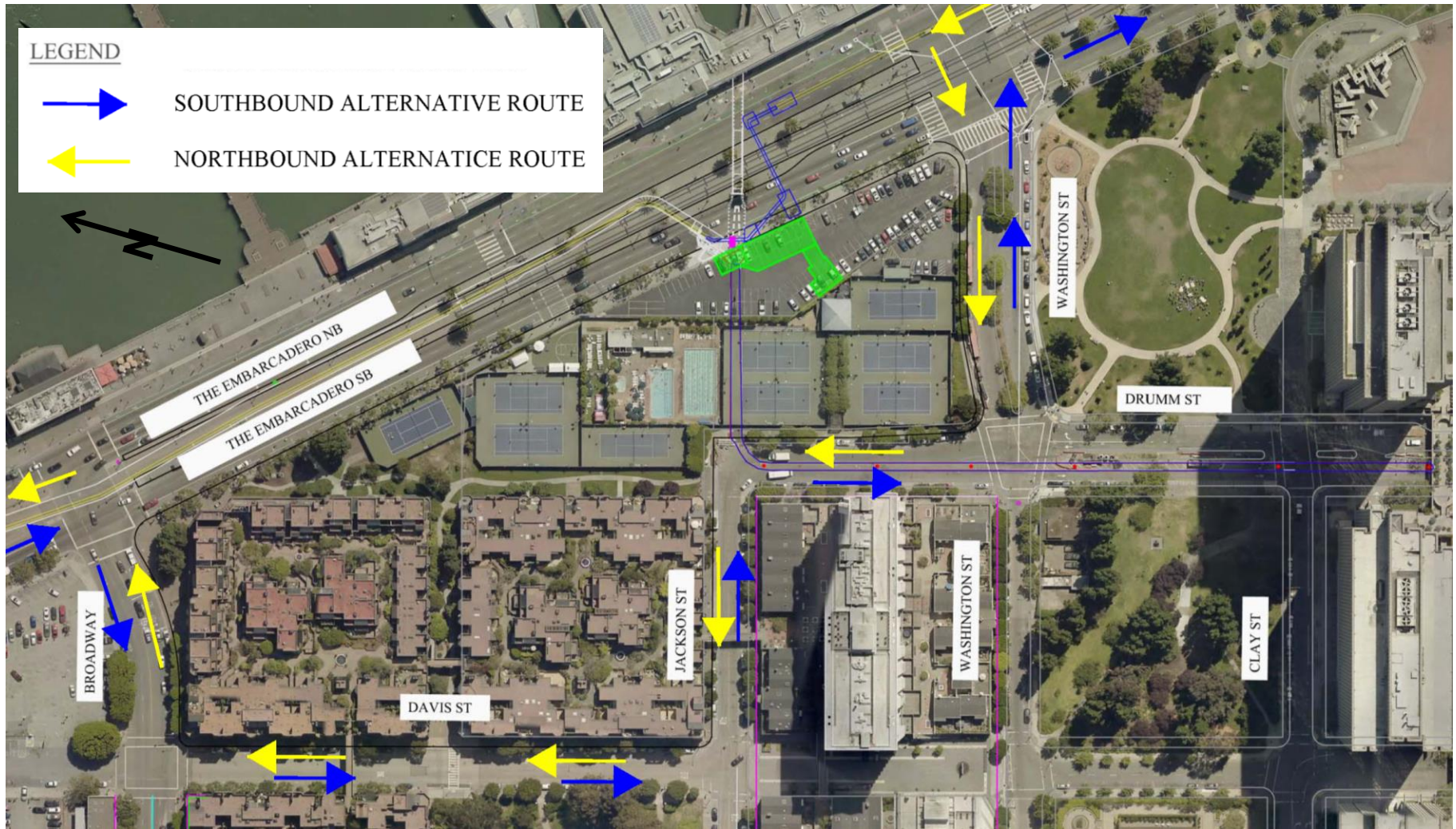
SB Lanes: 1 lane of traffic, M-F, 8:00am-3:30pm

SB Lanes: 2 lanes of traffic, M-F, 8:00am-5:00pm

**All Lanes of traffic will be open outside of the above work hours.**



# TRAFFIC MITIGATION: Alternative Route



# COMMUNICATIONS

---



[sfwater.org/ssip](https://sfwater.org/ssip)

[ssip@sfwater.org](mailto:ssip@sfwater.org)

[sfwater.org](https://sfwater.org)



# COMMUNICATIONS

The screenshot shows the San Francisco WaterPowerSewer website. The header includes the logo and navigation links: Stay Connected, Careers, Contact Us, and a search bar. The main navigation bar has tabs for CUSTOMER SERVICE, ENVIRONMENT, COMMUNITY, CONSTRUCTION (highlighted), and ABOUT US. Below the navigation bar, a breadcrumb trail reads: CONSTRUCTION > SEWER SYSTEM IMPROVEMENT PROGRAM (SSIP) > PROJECTS. The left sidebar lists various projects, with 'The Embarcadero/Drumm & Jackson Streets Sewer Improvements' highlighted. The main content area features a large photo of a street construction site. Below the photo, the 'Project Purpose and Need' section describes the rehabilitation of the North Shore Force Main (NSFM) and the Drumm & Jackson Streets sewers. To the right of the text are two green boxes: 'Project Materials' with a link to a 'Fact Sheet', and 'Contact Us!' with the email 'SSIP@sfgwater.org' and the phone number '(415) 554-3289'.

**San Francisco WaterPowerSewer**  
Services of the San Francisco Public Utilities Commission

Stay Connected Careers Contact Us Search...

CUSTOMER SERVICE ENVIRONMENT COMMUNITY **CONSTRUCTION** ABOUT US

CONSTRUCTION > SEWER SYSTEM IMPROVEMENT PROGRAM (SSIP) > PROJECTS

**PROJECTS**

- Urban Watershed Planning
- Green Infrastructure Projects
- Grey Infrastructure Projects
- Central Bayside System Improvement Project
- Biosolids Digester Facilities Project
- SSIP in Your Neighborhood Map
- Headworks Facility Project
- SSIP Reference Material
- The Embarcadero/Drumm & Jackson Streets Sewer Improvements**

## The Embarcadero/Drumm & Jackson Streets Sewer Improvements

### Project Purpose and Need

This project will rehabilitate or replace portions of the North Shore Force Main (NSFM) and the Drumm & Jackson Streets sewers that are susceptible to failure. The Drumm & Jackson sewer boxes, which are larger than 6-feet wide by 7-feet high, collect and transport combined wastewater by gravity to the North Point Pump Station, where the combined wastewater is pumped inside the NSFM towards the Southeast Treatment Plant. Together, the Drumm & Jackson Sewers and the NSFM provides sewer services to over 350,000 people in San Francisco on a regular work day.

The existing NSFM is at the end of its useful life with portions having undergone emergency repairs in 2008 and 2012. The NSFM is almost always in use and allowable construction work hours are limited. A portion of the NSFM cannot be rehabilitated without a new redundant force main, which was recently completed in Winter 2015. During the redundant force main work, the SFPUC observed severe corrosion inside the sewer boxes on Drumm & Jackson Streets.

**Project Materials**

- Fact Sheet

**Contact Us!**

SSIP@sfgwater.org  
(415) 554-3289

<http://www.sfgwater.org/edjs sewers>

CONTACT:

➤ [ssip@sfgwater.org](mailto:ssip@sfgwater.org)

➤ 415-554-3289



# Questions?

[sfwater.org/edjsewers](https://sfwater.org/edjsewers)

[ssip@sfwater.org](mailto:ssip@sfwater.org)

[sfwater.org](https://sfwater.org)

