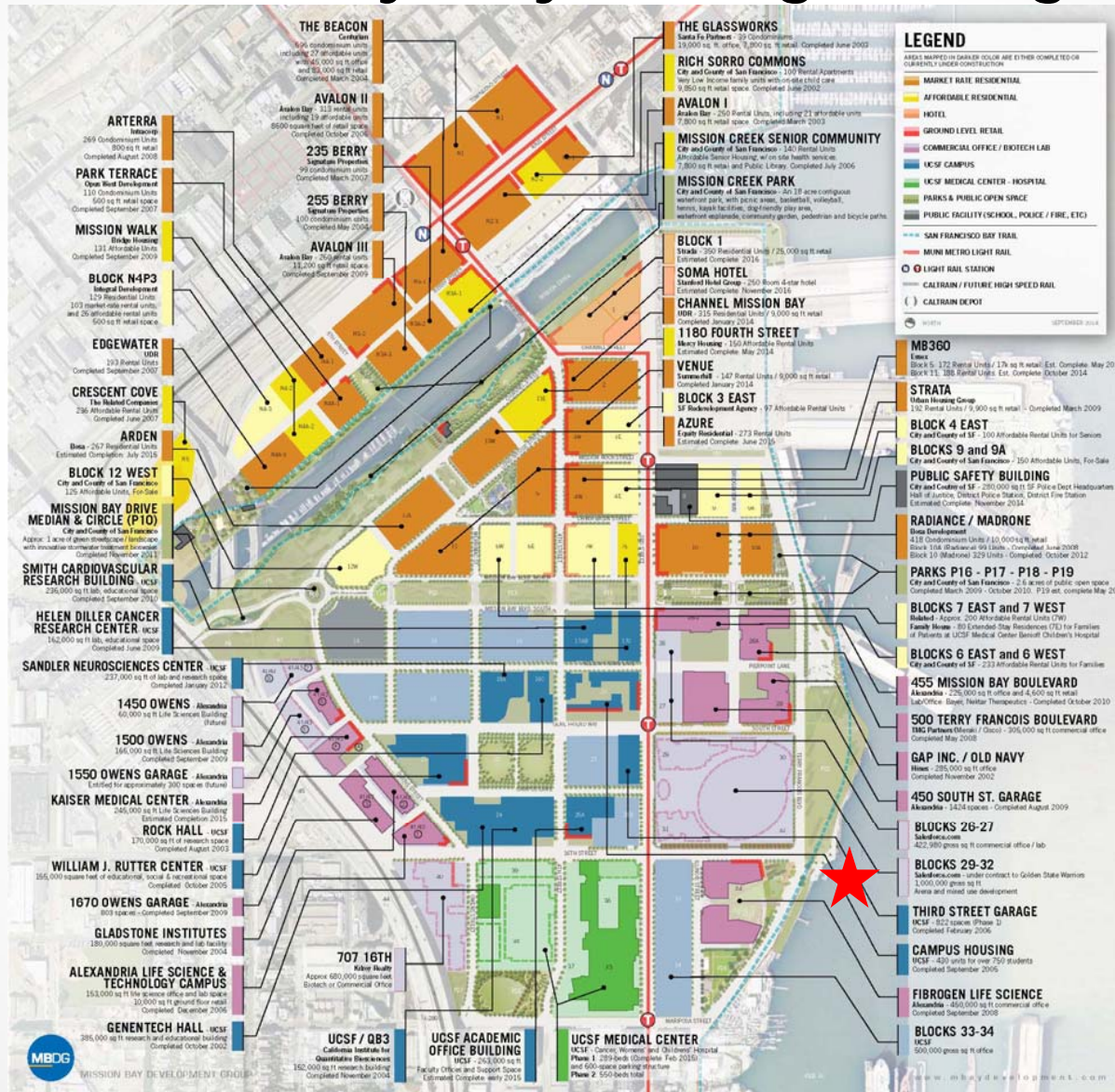


Mission Bay Ferry Landing Design Development & Permitting



Informational Presentation

Mission Bay Ferry Landing - Setting



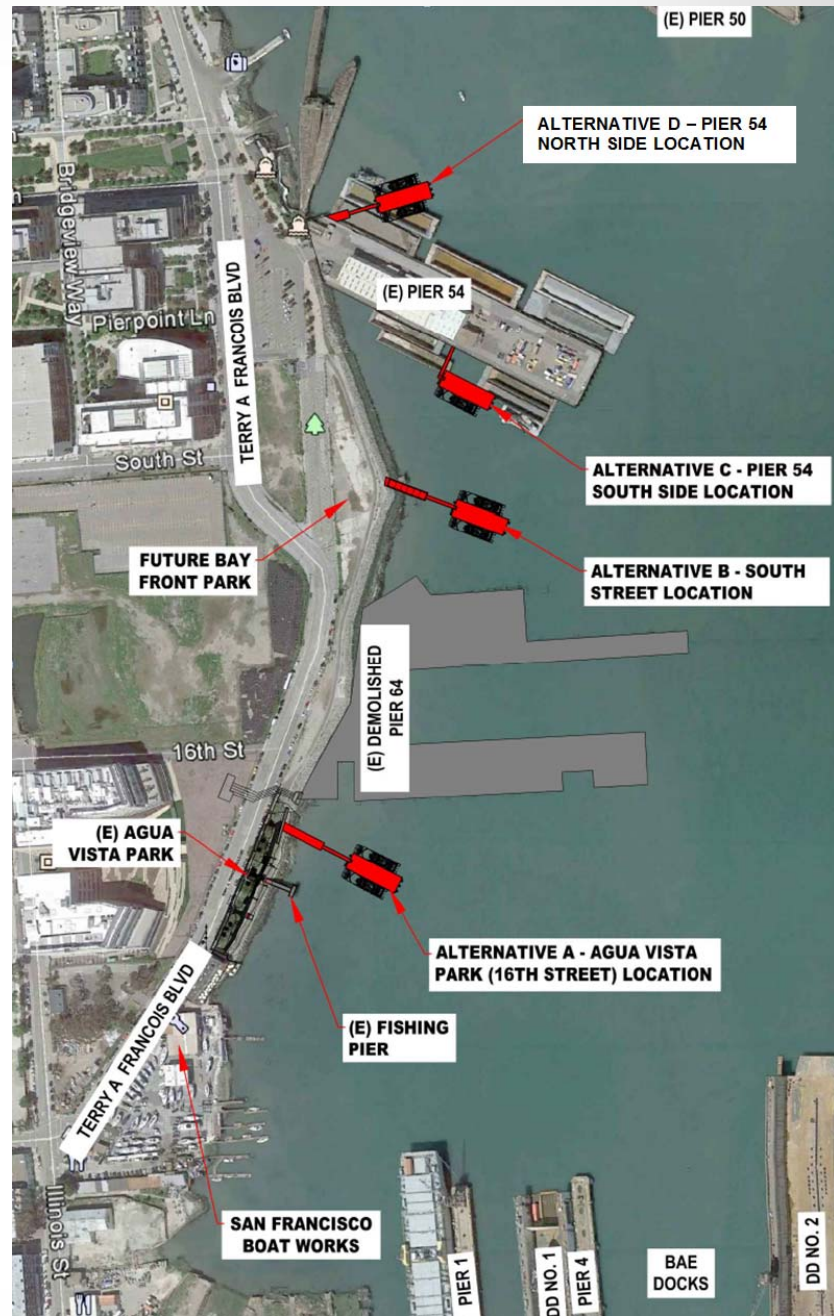
Why is a Ferry Landing Needed?



- Long Planned for Improvement
- Water transportation between central waterfront, downtown and East and North Bays.
- 46-acre, 550-bed UCSF Mission Bay Hospital
- UCSF Campus
- 18,000-seat Golden State Warriors Arena
- 7,000,000 ft² of New commercial space
- 1,000,000 ft² of New retail space
- New hotel
- 11,000 New housing units

Ferry Landing Overview

- 4 alternate **sites studied**
- **Coordination** with WETA, BAE, GGBHTD, and other project stakeholders
- **Wave** & coastal analysis
- **Dredging** requirements
- **Access** to nearby public transportation
- Estimated total **cost** ranges from \$32.5 to \$42.7 million depending on the location selected.



Site Selection Criteria



Criteria

- Proximity to Employment and Active Uses
- Connectivity to other public transit
- Maritime and other operational considerations
 - Ability to operate under storm conditions
 - BAE Navigational needs
 - Navigation around submerged Pier 64
- Protection from wave and storm action
- Ease of permitting (USACOE)
- Distance from Terry Francois Boulevard
- Compatibility with Bayfront and Agua Vista Park

Status Since June 2016

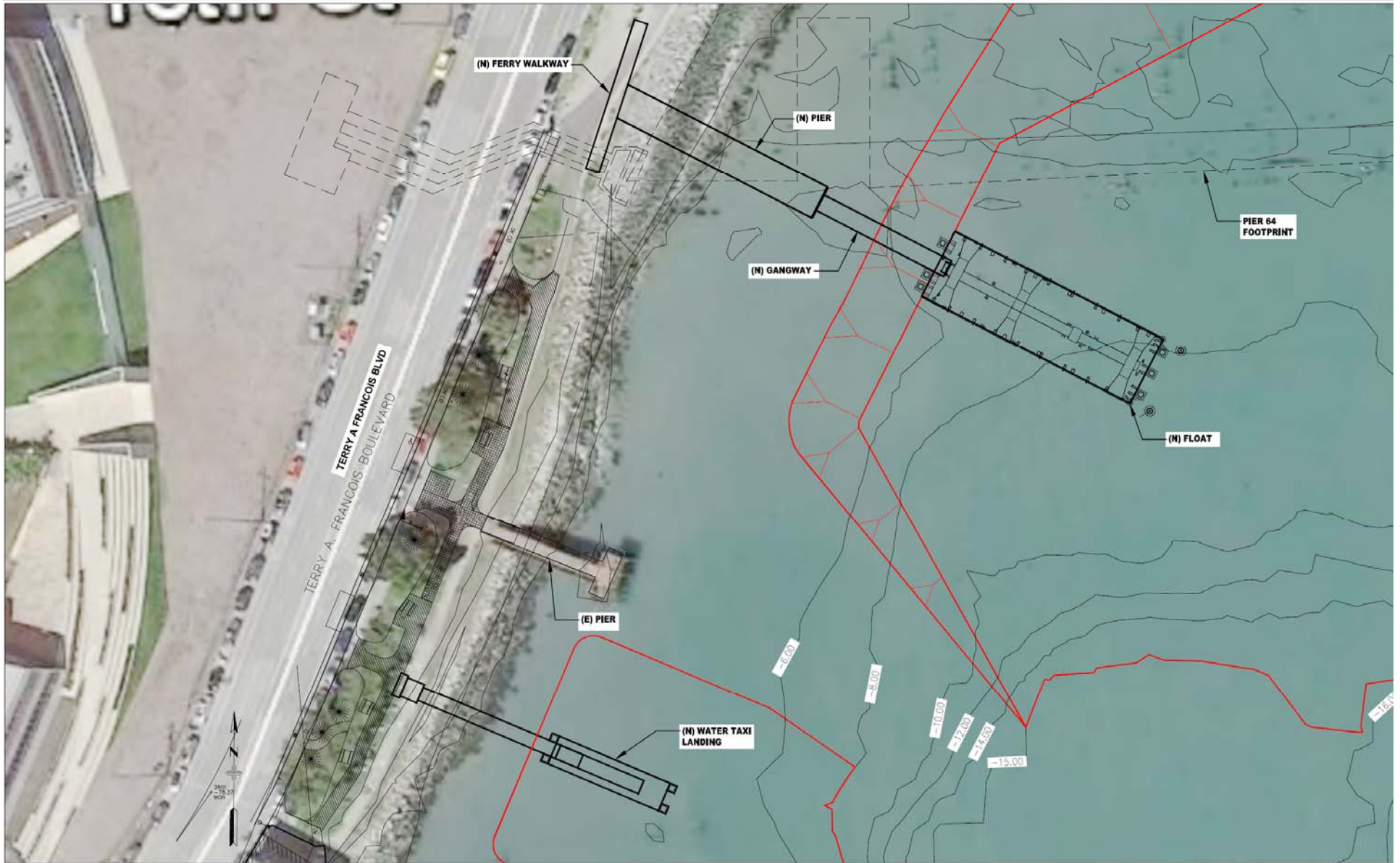


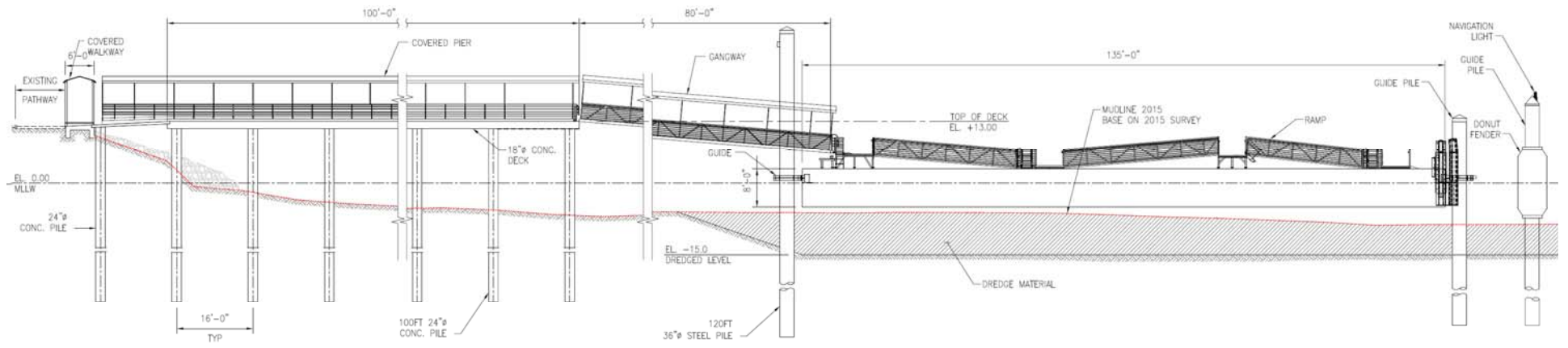
- Released and RFP for a design and permitting Team- COWI selected
- Narrowed Site to two locations
- Identified Preferred Site
- Ridership modeling (WETA/SFCTA)
- Sediment Sampling for dredging strategy/cost
- Analyzed ways to deliver early (2020/21)
- Working on securing Capital Funds
 - Grants
 - Federal/Local Transportation (OBAG- RM3, TIGER)
 - Transportation Impact Fees
 - Private
- Continued Public outreach

Site Selected

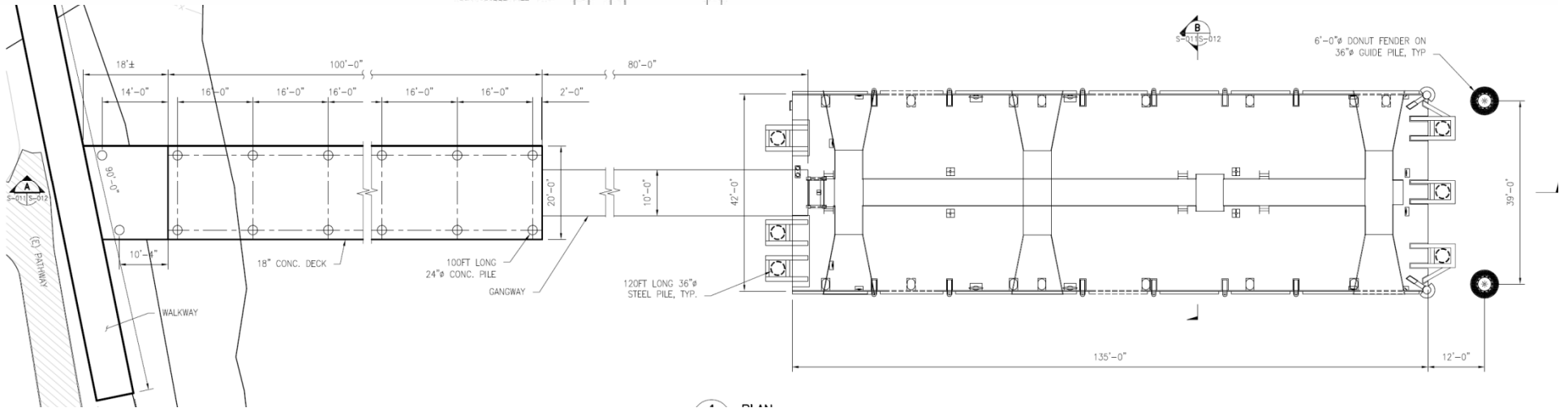
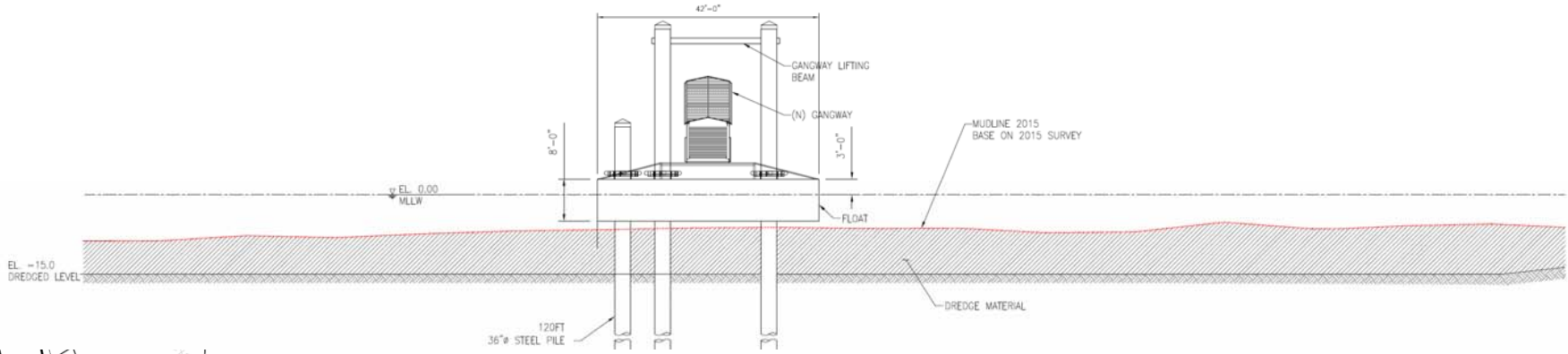


Site Selected

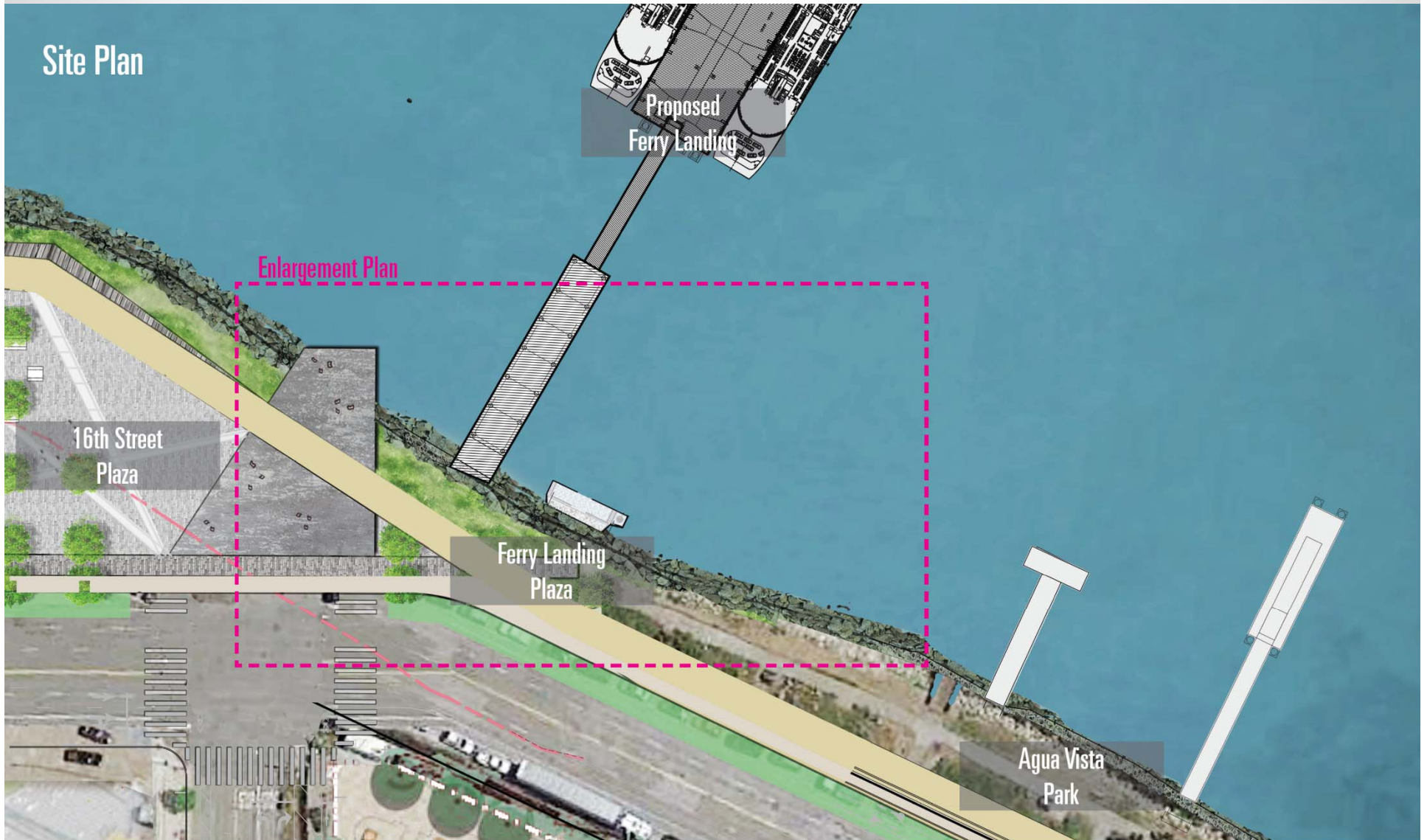




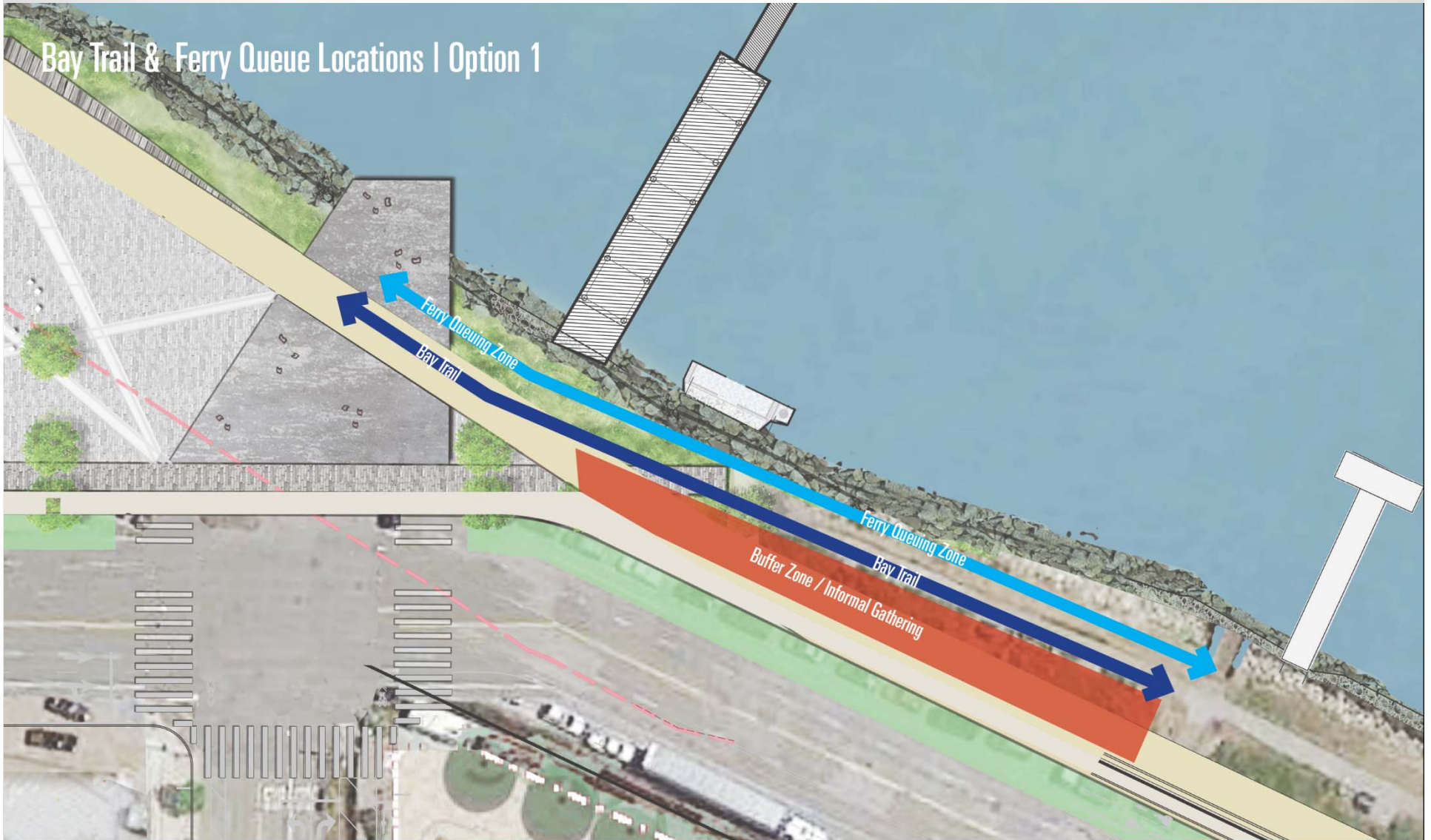
SECTION
 5-011S-012 3/32"=1'-0"



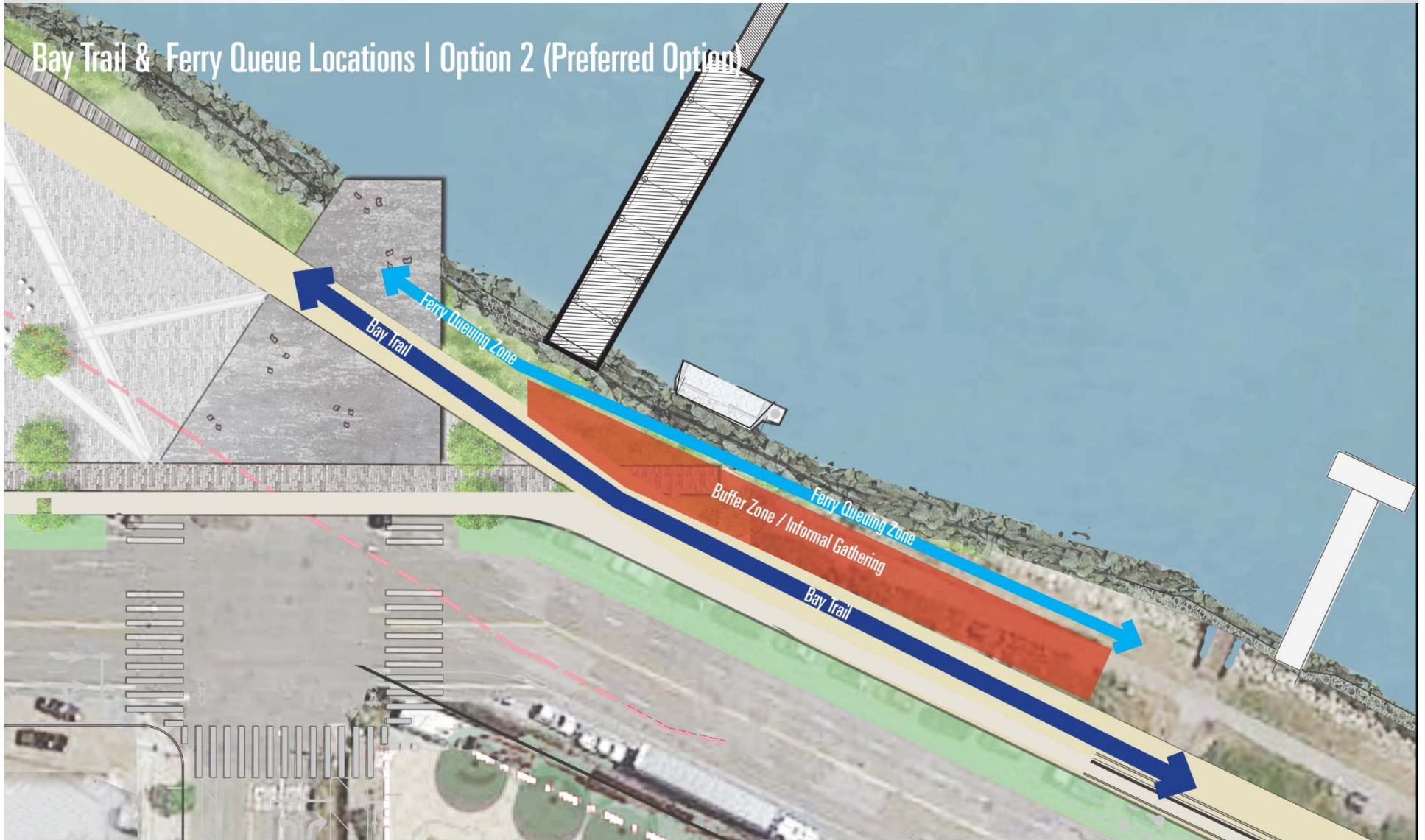
Mission Bay Ferry Landing



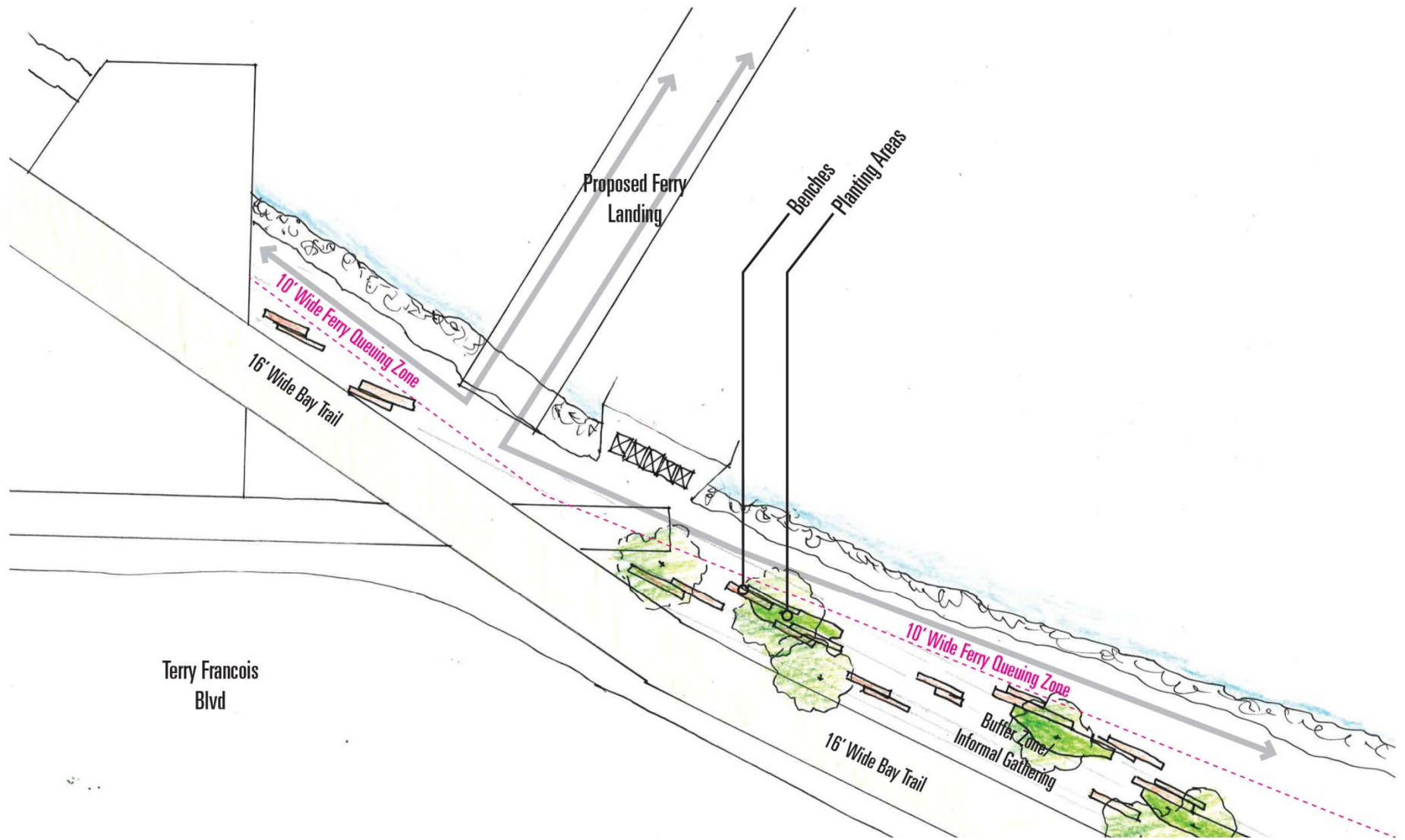
Mission Bay Ferry Landing



Mission Bay Ferry Landing



Mission Bay Ferry Landing



Next Steps



- Conduct ongoing public outreach
- Meet with permitting agencies
 - USACOE
 - RWQCB
 - BCDC
 - SF Planning for CEQA
- Architectural /Landscape Architecture design
- 30% design complete by September 2016
- Design Review
- Start Construction June 2019
- Operational Winter 2020/21

Any Questions?

