



BLUE GREENWAY

Planning and Design Guidelines



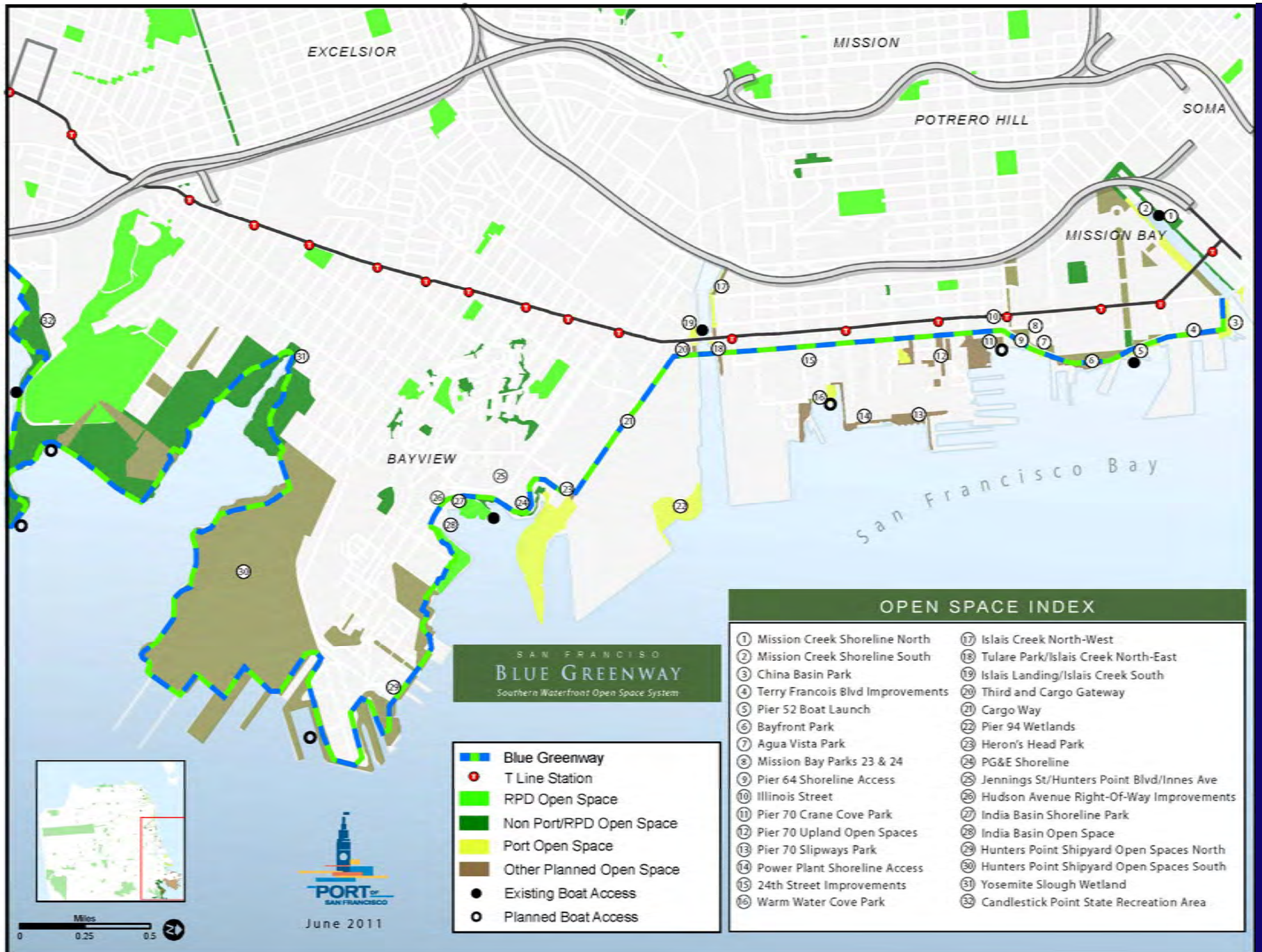
For more information go to:

www.sfport.com/bluegreenway

**or contact David Beaupre
at david.beaupre@sfport.com**

May 25th Meeting Agenda

1. Introduction and Review of Planning Process
2. Review Linking Street Concepts
3. Review Signage Concepts
4. Review Revised Site Furnishing Standards Concept
5. Review Draft Project Cost & Prioritization
6. Next Steps



PROJECT MAP

Blue Greenway Planning and Design Guidelines

Passage of 2008 Proposition A Clean and Safe Parks General Obligation Bond



- \$ 33.5 Million to Port
- \$ 22.5 Million to Blue Greenway Projects
 - Port to Conduct Community Planning Process and Design Guidelines to determine expenditure of funds other than Early Projects Identified to move forward
 - Port Blue Greenway Projects Identified for potential Funding:
 - Blue Greenway Planning and Design Community Planning Process
 - Signage, Way-finding, Art and Site Furnishings
 - Mission Bay - Bayfront Park Shoreline
 - Pier 70 Crane Cover Park
 - Warm Water Cove Park & Islais Creek Improvements
 - Heron's Head Park Improvements

Blue Greenway Planning and Design Guidelines- Community Planning Process

- Coordinate with Other Agencies (2009)
- Coordinate Stakeholders including use of existing CAC's
- Catalog Existing Conditions (May 2010)
- Summarize Resources and Deficiencies
- Review Best Practices
- Develop Use Concepts for Port Open Spaces (and Linking Streets) (Fall '10/Now)
- Develop Standards for Site Furnishings, (Wayfinding and Identity)
- Develop Cost Estimates and Project Prioritization
- Project Prioritized for Funding will go through additional community design process
- Identify other sources of funding

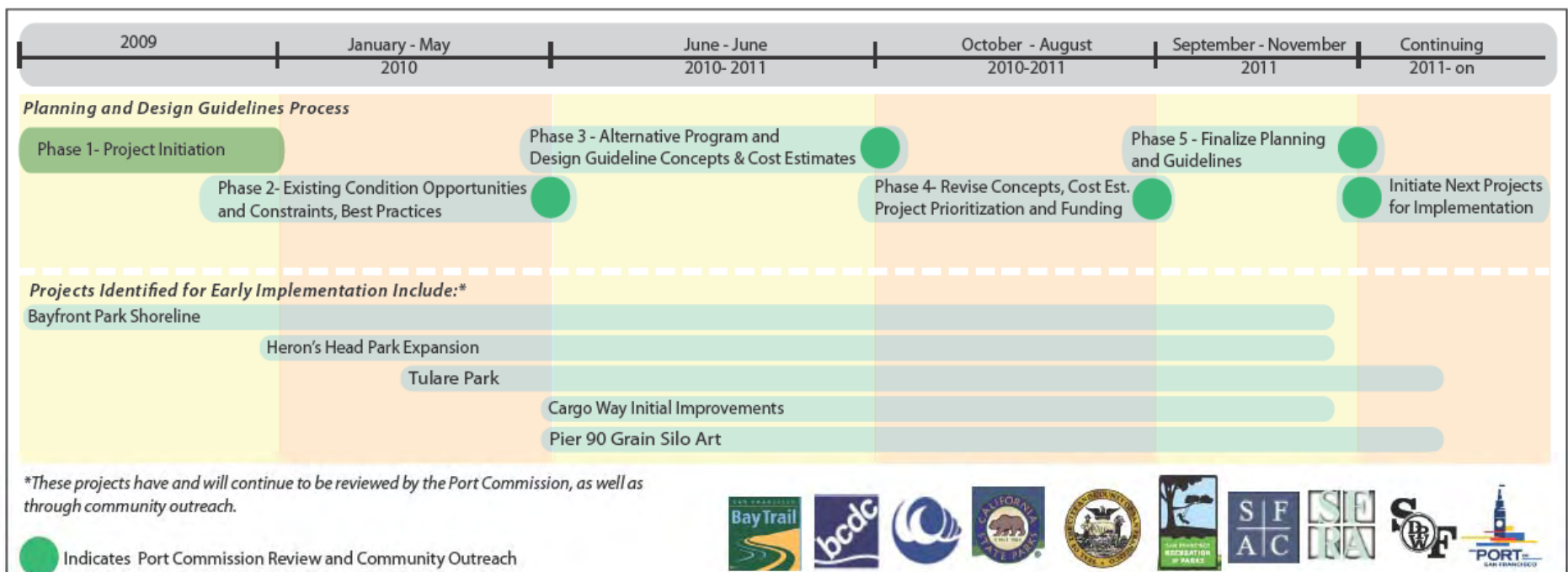


Figure 7.1: Planning Process and Schedule

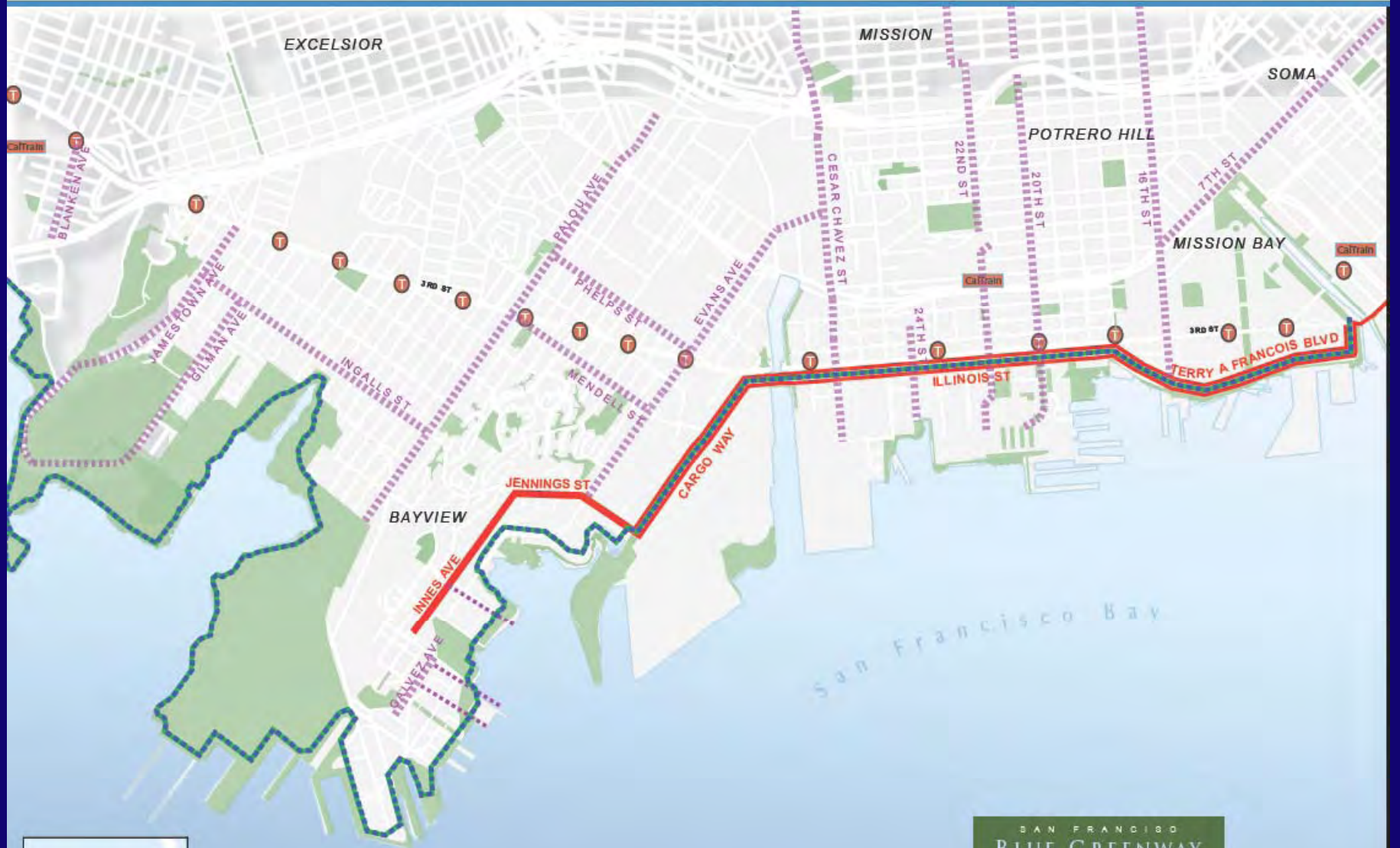
Blue Greenway Components

Planning and Design Guidelines:

1. Individual Port Open Spaces/Parks
2. Linking and Connecting Streets
3. Signage, Identity, Wayfinding, Interpretation and Art
4. Site Furnishings & Standards
5. Build Stewardship
6. Funding & Project Prioritization
7. Establish and Continue Interagency Coordination

May 25th Meeting Agenda

1. Introduction and Review of Planning Process
2. Review Linking Street Concepts
3. Review Signage Concepts
4. Review Revised Site Furnishing Standards Concept
5. Review Draft Project Cost & Prioritization
6. Next Steps



SAN FRANCISCO
BLUE GREENWAY
 Southern Waterfront Open Space System

-  Blue Greenway
-  Linking Streets
-  Connector Streets
-  Open Space
-  T Line Station
-  Caltrain Station



May 2011

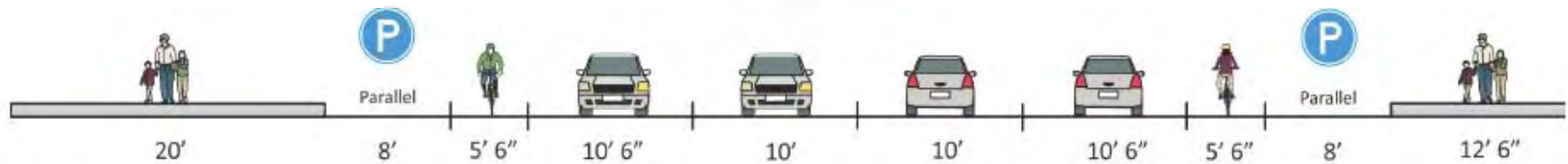
Blue Greenway Planning and Design Guidelines

Terry Francois Cross Sections

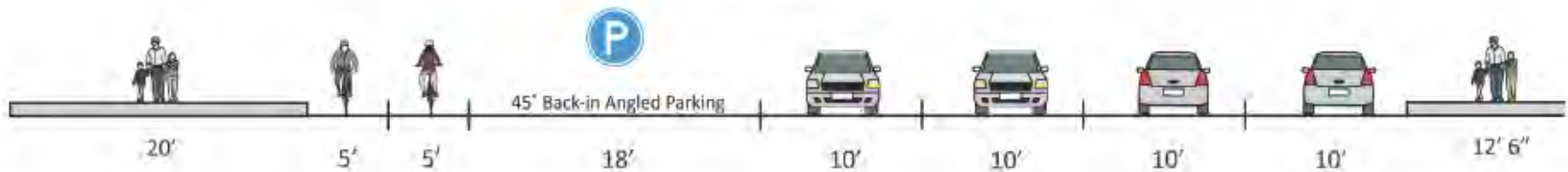
Mission Rock to Mariposa

Looking South

Existing



Alternative 1



Alternative 2

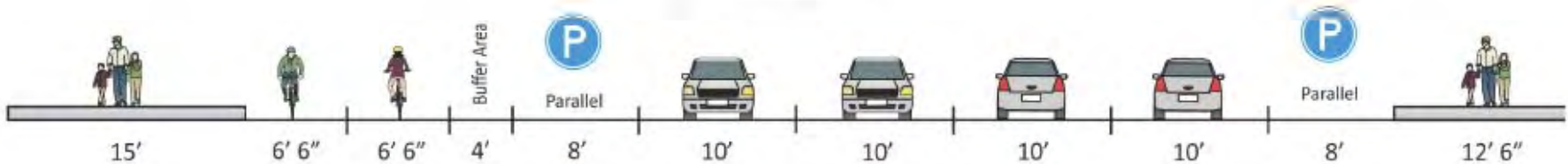


Figure 3.2: Terry Francois Boulevard Planned Profile

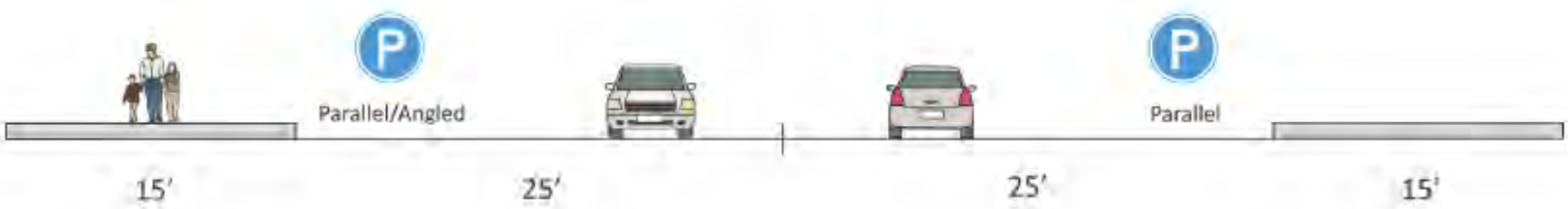
Illinois St Cross Sections

Terry Francois to Marin

Looking South

Existing

Note that parking is prohibited adjacent to loading docks



Planned (to be installed Summer 2011)

Note that parking is prohibited adjacent to loading docks

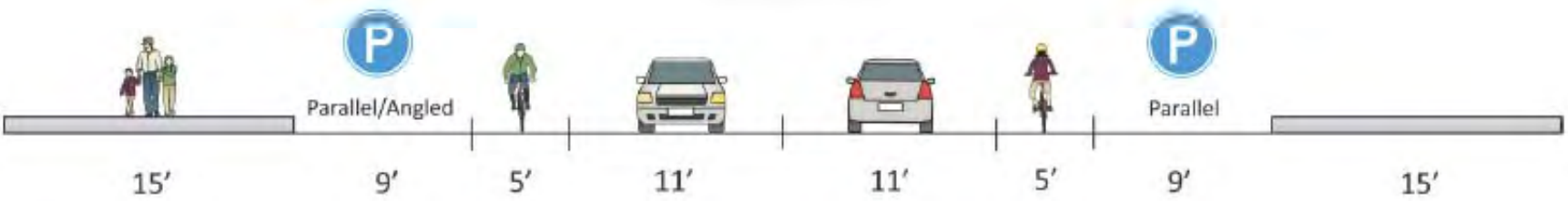


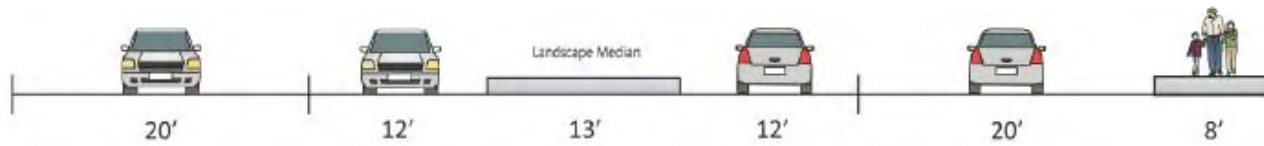
Figure 3.3: Illinois Street Planned Profile

Cargo Way Cross Sections

Illinois to Jennings Streets

Looking East

Existing



Immediate Plan



Long Term Plan

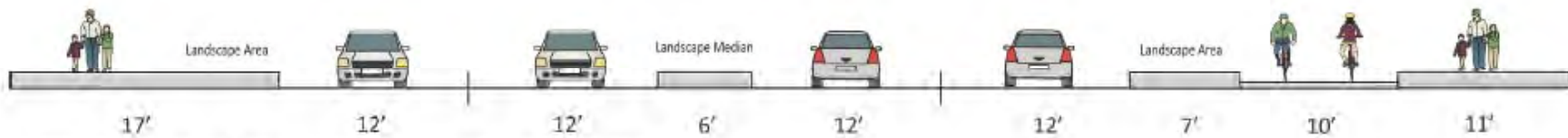


Figure 3.4: Cargo Way Existing Conditions and Concepts

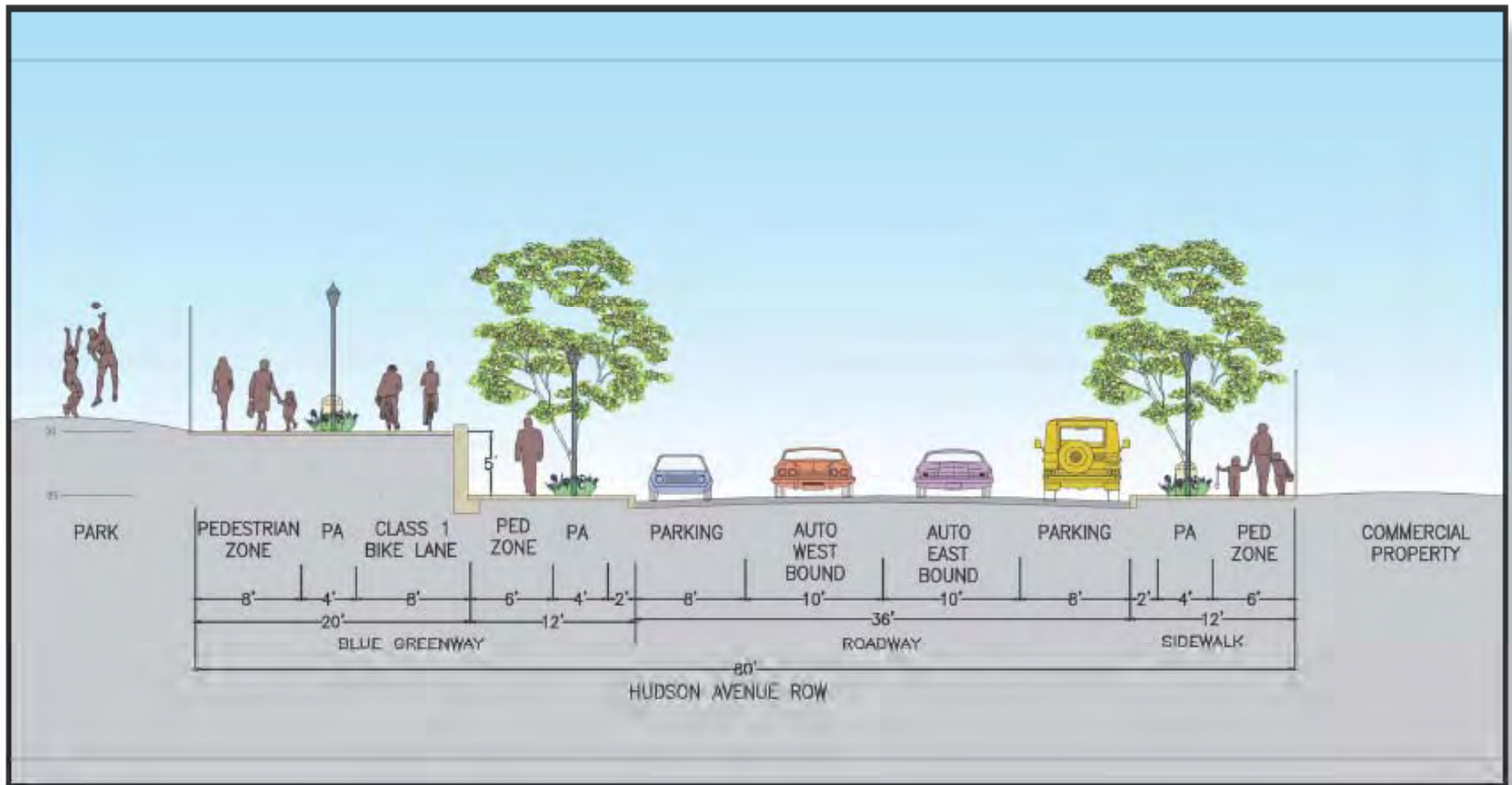


Figure 3.5: Hudson Avenue Roadway Improvement Concept

Signage



Lefty O'Doul Bridge



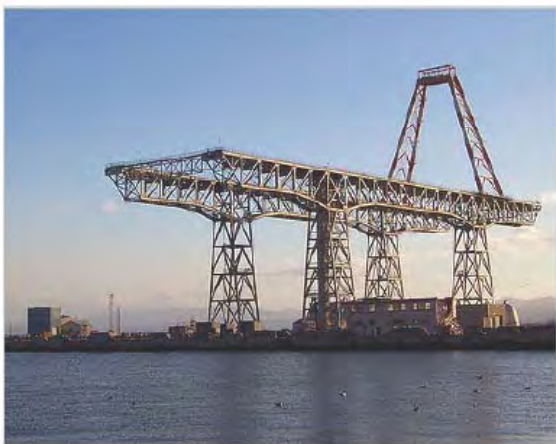
Grain Silos at Islais Creek



Historic Administrative Building at Pier 70



Historic Crane at Pier 70



OPPORTUNITIES

Blue Greenway Planning and Design Guidelines



Hard Edge Conditions



Hard Edge Conditions



Users Have to Consciously Find Transitions



Hard Edge Conditions



Vast Stretches of Industrial Frontage



Inconsistent Parking and Sidewalk Conditions



Inconsistent Parking and Sidewalk Conditions



Lack of Water Views

CHALLENGES

Blue Greenway Planning and Design Guidelines



Street Signage



Bay Trail Signage



Park Identification Signage



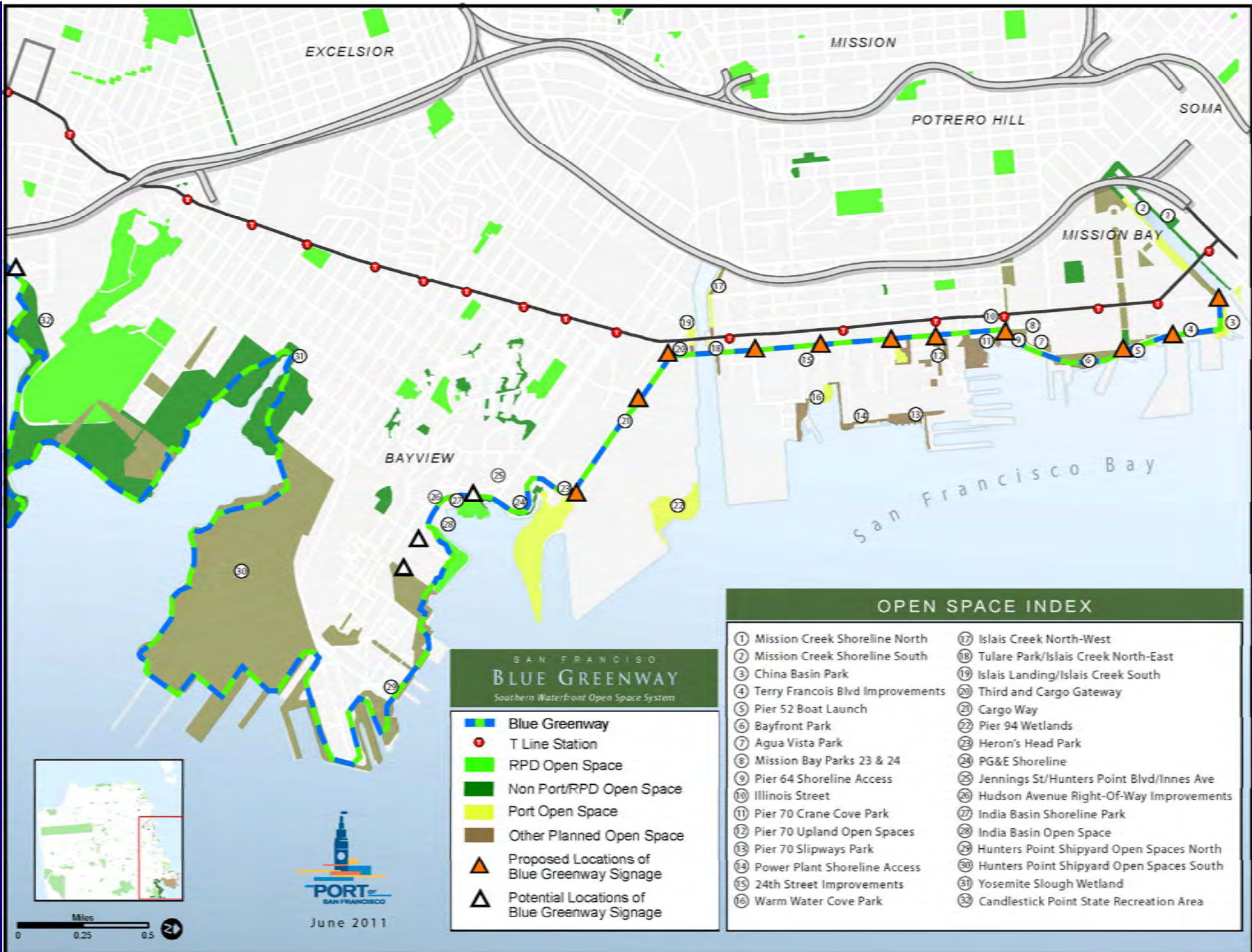
Park Interpretive Signage

Port Boat Launch Identification

EXISTING

Blue Greenway Planning and Design Guidelines

- Be comprised of visually significant streetscape and park elements that respond to the urban, historic and industrial setting
- Promote public use of the waterfront by providing directional, orientation, interpretive, and system information
- Increase the waterfront's connectivity to adjacent neighborhoods and San Francisco at Large
- Increase public awareness of the entire Bay waterfront from Candlestick Point to Golden Gate Bridge, defining established waterfront districts and landmarks;
- Inform public about adjacent waterfront neighborhoods within context of Blue Greenway
- Be sustainable in terms of material specification, product life span and durability



Blue Greenway Planning and Design Guidelines

Sign Concept – Sail

bright yellow and citrus orange / platinum gray inside

Top of Blaze Height - 19'6"

Top of Wayfinding Height - 12'



6' 12' 18' 24'

BLUE GREENWAY SIGNAGE, JUNE 16, 2017
SCALE: 1"=1'-0"
Set 11 (over 12-17, 98) (ending 1/16/17)

Red Beech, Inc.
1000 Zionsville Road, Suite 200
Zionsville, IN 46088



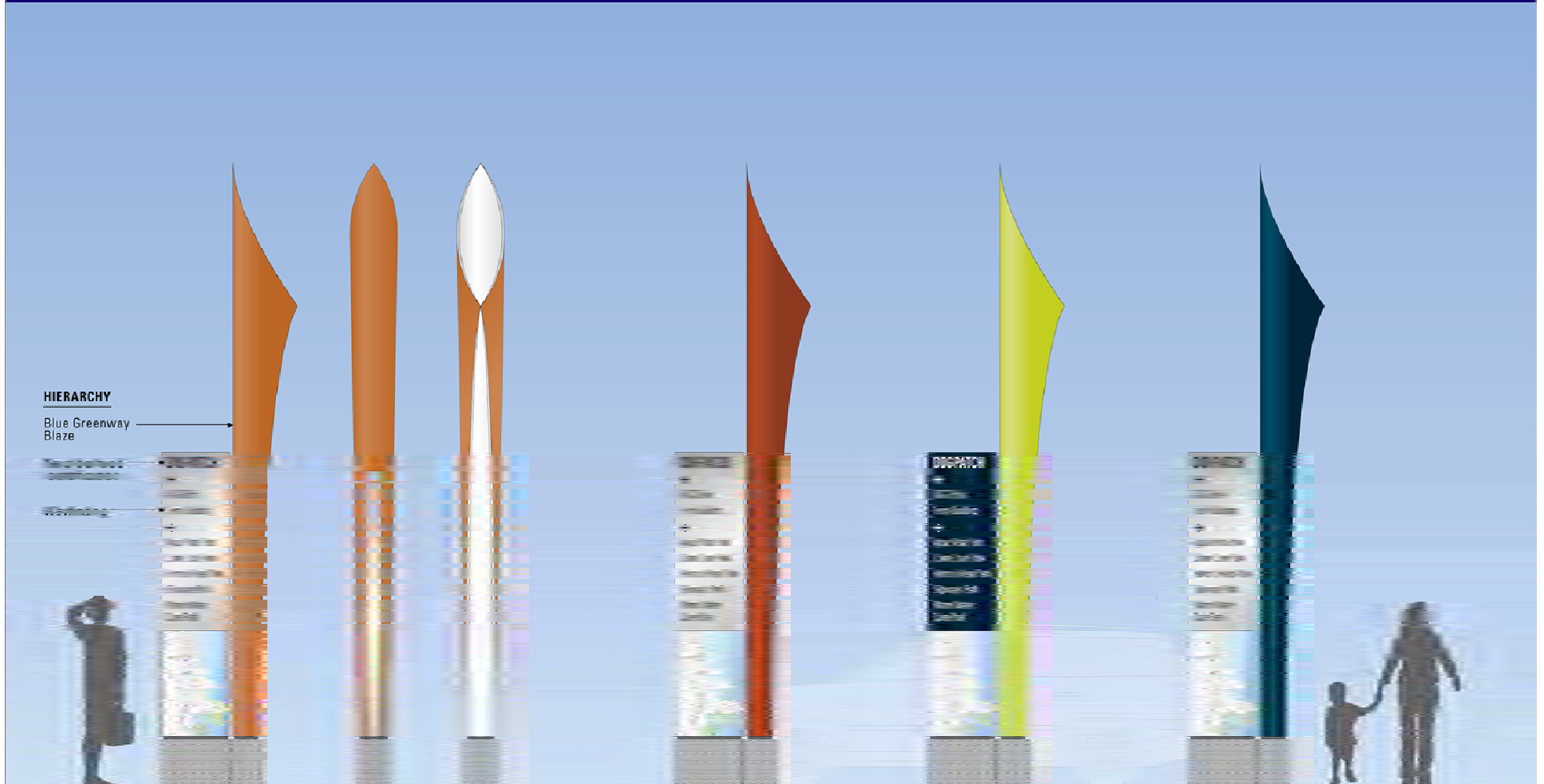
Blue Greenway Planning and Design Guidelines

Sign Concept – Sail

golden gate red, brick red and green/ marine blue inside platinum/gray

Top of Blaze Height - 19'6"

Top of Wayfinding Height - 12'



HIERARCHY

Blue Greenway
Blaze

Wayfinding

DISPATCH

6' 12' 18' 24'

BLUE GREENWAY SIGNAGE, JUNE 16, 2007
SCALE: 1"=1'-0"
Sail Base: 12" O, Wayfinding Pole: 12" O

InterDesign Associates Inc.
1400 Peninsula Station, Suite 500
San Francisco, CA 94115



Blue Greenway Planning and Design Guidelines

Sign Concept – Sail

bright yellow placed on Illinois at 25th Street



BLUE GREENWAY SIGNAGE, JUNE 18, 2011
RMT TO SCALE
SEE PLAN 17-01, INCLUDING PAGE 27-07

Blue Greenway Signage Inc.
Performance Based Design
and Construction Services

Sign Concept – Sail

citrus orange placed on Illinois at 25th Street



BLUE GREENWAY SIGNAGE, JUNE 16, 2011
NOT TO SCALE
S&B: 17-01, 18-01, 19-01, 20-01

Sign Concept – Sail

golden gate red placed on Illinois at 25th Street



BLUE GREENWAY SIGNAGE, JUNE 16, 2011
RMT TO SCALE
S&B: BUREAU OF ARCHITECTURE, PLANNING & DESIGN

San Diego Peninsula Inc.
1600 Camino del Rio East, Suite 400
San Diego, CA 92108

Sign Concept – Sail brick red placed on Illinois at 25th Street



BLUE GREENWAY SIGNAGE, APRIL 16, 2011
RMT TO WPLS
S&B Blue 17.01, Redline Plan 17.02

Blue Greenway Signage, Inc.
12000 15th Street, Suite 100
San Francisco, CA 94133

Blue Greenway Planning and Design Guidelines

Sign Concept – Sail green placed on Illinois at 25th Street



BLUE GREENWAY SIGNAGE, APRIL 16, 2011
RMT TO PEOPLE
5th Floor, 17th St, San Francisco, CA 94103

Blue Greenway Signage Inc.
17th Street, San Francisco, CA 94103

Sign Concept – Sail

maritime blue placed on Illinois at 25th Street



BLUE HIGHWAY SIGNAGE, APRIL 16, 2011
RMT/D/AR/PL
San Diego, CA, Republic Plaza, 01-07

Blue Highway Signage Inc.
10000 San Diego Blvd.
San Diego, CA 92121

Blue Greenway Planning and Design Guidelines

Sign Concept – Sail Park and Interpretation Signage



6' 12' 18' 24'

BLUE GREENWAY SIGNAGE AND ID SYSTEM
PROJECT 11-11-11
REV. 02-12-11



Questions & Comments

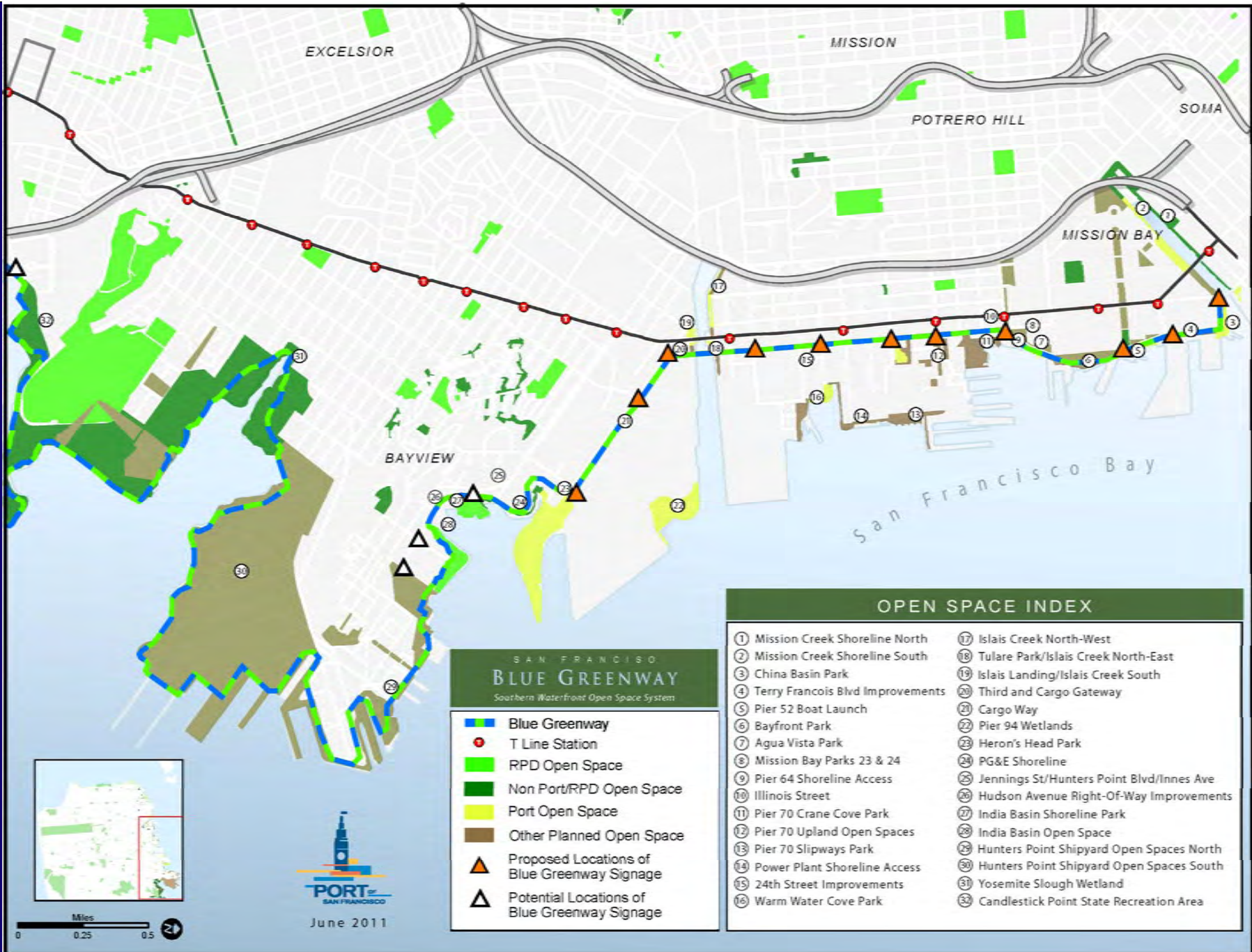


6' 12' 18' 24'

BLUE GREENWAY SIGNAGE, JUNE 16, 2017
SCALE: 1/4"=1'-0"
Setback: 15'-0", 98yds; 15'-0"

Red Ecology, Inc.
1000 Zionsville Road, Suite 200
Billerica, MA 01821

Blue Greenway Planning and Design Guidelines



SAN FRANCISCO
BLUE GREENWAY
 Southern Waterfront Open Space System

- Blue Greenway
- T Line Station
- RPD Open Space
- Non Port/RPD Open Space
- Port Open Space
- Other Planned Open Space
- Proposed Locations of Blue Greenway Signage
- Potential Locations of Blue Greenway Signage

OPEN SPACE INDEX

- | | |
|------------------------------------|---|
| ① Mission Creek Shoreline North | ①⑦ Islais Creek North-West |
| ② Mission Creek Shoreline South | ①⑧ Tulare Park/Islais Creek North-East |
| ③ China Basin Park | ①⑨ Islais Landing/Islais Creek South |
| ④ Terry Francois Blvd Improvements | ②⑩ Third and Cargo Gateway |
| ⑤ Pier 52 Boat Launch | ②⑪ Cargo Way |
| ⑥ Bayfront Park | ②⑫ Pier 94 Wetlands |
| ⑦ Agua Vista Park | ②⑬ Heron's Head Park |
| ⑧ Mission Bay Parks 23 & 24 | ②⑭ PG&E Shoreline |
| ⑨ Pier 64 Shoreline Access | ②⑮ Jennings St/Hunters Point Blvd/Innes Ave |
| ⑩ Illinois Street | ②⑯ Hudson Avenue Right-Of-Way Improvements |
| ⑪ Pier 70 Crane Cove Park | ②⑰ India Basin Shoreline Park |
| ⑫ Pier 70 Upland Open Spaces | ②⑱ India Basin Open Space |
| ⑬ Pier 70 Slipways Park | ③⑰ Hunters Point Shipyard Open Spaces North |
| ⑭ Power Plant Shoreline Access | ③⑱ Hunters Point Shipyard Open Spaces South |
| ⑮ 24th Street Improvements | ③⑰ Yosemite Slough Wetland |
| ⑯ Warm Water Cove Park | ③⑱ Candlestick Point State Recreation Area |



June 2011

SITE FURNISHINGS

Comments Received on Prior Draft

- Suggested palette was too specific
- Surrounding lands use as a basis for palette, too specific
- Furnishings for individual open spaces should be based upon criteria that allows designers to choose based upon context of site
- Should develop a furnishing or element that helps strengthens or establishes identity to Blue Greenway, which utilizes local materials or is manufactured locally reflective of the industrial and maritime forms

Color and Material Suggestions



Concrete



Concrete - cast



Concrete - textured



Concrete - form finished



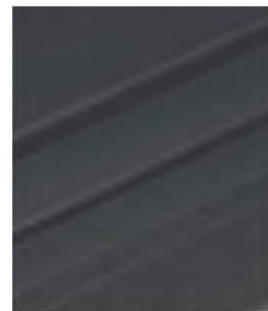
Steel - Stainless



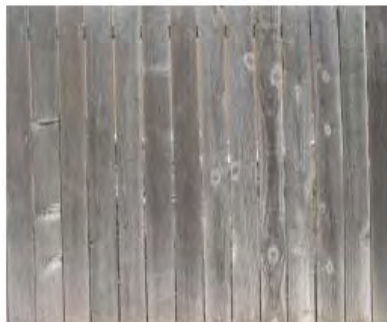
Steel - Weathering



Steel - Galvanized



Steel - Powder Coated



Wood - Sustainably Harvested
Redwood or Cedar



Wood - Reclaimed

Color Notes:

- Site furnishings should not distract from the primary focus of the Blue Greenway which is Nature and the Industrial Waterfront.
- A neutral, natural color palette based on the industrial materials found in the area would work well.
- Bright colors should be avoided except for interpretive signs, way-finding, and public art.

Palette for Streetscape Site Furnishings



*Trash / Recycling Receptacle
Stainless or Powder-coated Steel*



*Bike Rack Stainless Steel
Square Tube*



*Trash / Recycling Receptacle
Powder-coated Steel*



*Exercise Equipment Stainless
or Powder-coated Steel*



*Water Fountain / Bottle Refill Station
Powder-coated Steel*



Bicycle Racks



Water Fountain / Refilling Station



Concrete Block



Concrete Block - Detail

Specific Open Space Furnishings:

The selection of site furnishings for individual open spaces with the exception of three furnishing types (bike racks, drinking fountains and Blue Greenway Landscape blocks) will be based on the unique characteristics of the individual sites while using the criteria and characteristics established in this section. This is intended to provide for a certain level of consistency while allowing individual designers some flexibility and creativity.

The three pieces of site furnishings specified for the design of the Blue Greenway open spaces are established to help strengthen the identity and system as a whole and ease in maintenance and replacement of the furnishings. The three elements include, bicycle racks, drinking fountains and Blue Greenway landscape blocks, as described below:

Bicycle racks

- Use tubular square material, in cross section to deter pipe cutting
- Locate in a convenient location, in plain view, and away from the street edge if possible
- Provide enough for anticipated activity in the area

Drinking fountains

- Provide extremely durable units
- Include a dog bowl option, one per site, minimum
- Incorporate jug filler for refilling personal water bottles

Blue Greenway Landscape Blocks

- Select from Blue Greenway Customized Blocks (details and options to be defined)
- To be used as seating, retaining or sculptural forms
- To be utilized in all open spaces

Criteria for other Site Furnishing Selections based upon:

- ***Benches***
- ***Waste and Recycling***
- ***Bullrails***
- ***Railings***
- ***Tables***
- ***Barbecues***
- ***Bollards***
- ***Lighting***
- ***Planters***
- ***Tree Grates***
- ***Exercise Equipment***
- ***Blue Greenway Landscape Blocks***



Concrete Block



Concrete Block - Detail



Project Funding

- 2008 Proposition A Clean and Safe Parks Bond \$22.5 million
- Port of SF Lease Agreement for Transbay Cable \$ 550,000 a year for 10 yrs
- BCDC/ SFPUC Islais Creek Mitigation Funds \$ 720,000
- Port Southern Waterfront Beautification \$ 550,000
- California Resource Agency Grant - Tulare Park \$ 275,000

- Port will continue to investigate other funding sources such as:
 - State of California Proposition 84
 - ABAG Bay Trail Grants
 - Coastal Conservancy Grants
 - Eastern Neighborhood Impact fees

Project Cost

PROJECT / COST ESTIMATE		SOURCE						TOTAL FUNDED
		GO Bond	Southern Waterfront Beautification	Transbay Cable Public Trust Benefit	BCDC/PUC Islais Creek Mitigation	CA Resource Agency Grant (Tulare)	Other Grants	
Blue Greenway Planning and Design Guidelines/ CEQA	\$913,500	\$913,500						\$913,500
China Basin Park (SITE 3)	\$TBD							\$0
Pier 52 Boat Launch (SITE 5)	\$600,000							\$0
Bayfront Park Shoreline (SITE 6)	\$2,950,000	\$2,950,000						\$2,950,000
Pier 70 Crane Cove Park (SITE 11)	\$30,000,000	\$9,663,250		\$1,100,000				\$10,763,250
Pier 70 Slipways Park (SITE 13)	\$15,000,000							\$0
Power Plant Shoreline (SITE 14)	\$TBD							\$0
Warm Water Cove Park (SITE 16)	\$5,000,000							\$0
Islais Creek Northwest (SITE 17)	\$1,300,000							\$0
Copra Crane Restoration	\$170,000				\$170,000			\$170,000
Tulare Park/ Islais Creek North-East (SITE 18)	\$860,000	\$585,000				\$275,000		\$860,000
Islais Landing/ Islais Creek South (SITE 19)	\$0							\$0
Bayview Gateway (SITE 20)	\$3,595,000	\$3,594,125						\$3,594,125
Heron's Head Park Improvements (SITE 23)	\$1,975,000	\$1,975,000						\$1,975,000
Blue Greenway Signage, Identity & Furnishings	\$1,545,000	\$1,545,000						\$1,545,000
Public Art	\$1,250,000	\$1,000,000	\$250,000					\$1,250,000
Islais Creek Pile and Debris Removal	\$550,000				\$550,000			\$550,000
Cargo Way Bicycle Improvements	\$437,000		\$125,000				\$312,000	\$437,000
TOTAL	\$66,145,500	\$22,225,875	\$375,000	\$1,100,000	\$720,000	\$275,000	\$312,000	\$25,007,875

Project Prioritization

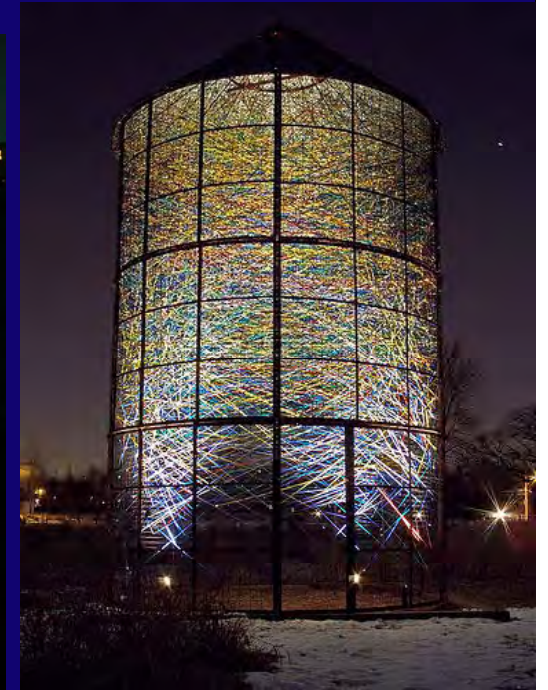
PROJECT	CRITERIA	Does the project meet the established criteria for the specific funding source	Is the project identified in an existing Port or City Plan	Does the project strengthen the Blue Greenway identity	Does the project create waterfront access where it does not exist today	Is the project identified as a priority or nearby community	Will the project serve an adjacent community	Can the project leverage other funding (now or in the future)	Does the project be easily phased or completed with the available funding	Does the project enhance or protect natural/cultural resources	PRIORITIZED
Blue Greenway Planning and Design Guidelines	X	X	X	X	X	X	X	X	X	X	X
China Basin Park (SITE 3)		X	X			X					
Pier 52 Boat Launch (SITE 5)						X					
Bayfront Park Shoreline (SITE 6)	X	X	X	X		X	X	X	X	X	X
Pier 70 Crane Cove Park (SITE 11)	X	X	X	X	X	X	X	X	X	X	X
Pier 70 Slipways Park (SITE 13)		X		X					X		
Power Plant Shoreline (SITE 14)				X							
Warm Water Cove Park (SITE 16)	X			X					X		
Islais Creek Northwest (SITE 17)	X			X							
Copra Crane Restoration	X	X	X		X		X	X	X	X	X
Tulare Park/ Islais Creek North-East (SITE 18)	X	X					X	X	X	X	X
Islais Landing/ Islais Creek South (SITE 19)	X										
Bayview Gateway (SITE 20)	X	X	X	X	X	X		X	X	X	X
Heron's Head Park Improvements (SITE 23)	X	X	X		X	X		X			X
Blue Greenway Signage, Identity & Furnishings	X	X	X		X	X	X	X	X	X	X
Public Art	X	X	X		X	X	X	X			X
Islais Creek Pile and Debris Removal	X			X		X		X	X		X
Cargo Way	X	X			X	X	X	X			X

PROJECT	PHASE	2009	2010	2011	2012	2013	2014
Bayfront Park Shoreline	Planning	█					
	Design/Review/Permitting		█	█			
	Construction			█			
Pier 70 Crane Cove Park	Planning			█	█		
	Design/Review/Permitting				█	█	
	Construction					█	█
Copra Crane	Planning	█	█	█			
	Design/Review/Permitting			█			
	Construction				█		
Tulare Park	Planning		█				
	Design/Review/Permitting			█			
	Construction				█		
Bayview Gateway	Planning		█	█			
	Design/Review/Permitting			█	█		
	Construction				█	█	
Heron's Head Park	Planning	█	█				
	Design/Review/Permitting		█	█			
	Construction			█			
Signage and Furnishings	Planning			█			
	Design/Review/Permitting			█	█		
	Construction				█		
Public Art	Planning			█			
	Design/Review/Permitting				█		
	Construction				█	█	
Islais Creek Pile and Debris Removal	Planning			█			
	Design/Review/Permitting				█		
	Construction				█		
Cargo Way	Design/Review/Permitting			█			
Bicycle Improvements	Construction			█			
		2009	2010	2011	2012	2013	2014

PROJECT	PHASE	2009	2010	2011	2012	2013	2014
Bayfront Park Shoreline	Planning	█					
	Design/Review/Permitting		█	█			
	Construction			█			
Pier 70 Crane Cove Park	Planning			█	█		
	Design/Review/Permitting				█	█	
	Construction					█	█
Copra Crane	Planning	█	█	█			
	Design/Review/Permitting			█			
	Construction				█	█	
Tulare Park	Planning		█				
	Design/Review/Permitting			█	█		
	Construction				█		
Bayview Gateway	Planning		█	█			
	Design/Review/Permitting			█	█		
	Construction				█	█	
Heron's Head Park	Planning	█	█				
	Design/Review/Permitting		█	█			
	Construction			█			
Signage and Furnishings	Planning			█			
	Design/Review/Permitting			█	█		
	Construction				█		
Public Art	Planning			█			
	Design/Review/Permitting				█	█	
	Construction				█	█	
Islais Creek Pile and Debris Removal	Planning			█			
	Design/Review/Permitting				█		
	Construction				█		
Cargo Way	Design/Review/Permitting			█			
Bicycle Improvements	Construction			█			
		2009	2010	2011	2012	2013	2014

Projects Identified for Early Implementation:

- Planning and Design Guidelines
- Mission Bay Bayfront Park Shoreline
- Heron's Head Park Expansion
- Redesigned Tulare Park
- Public Art Installation at Pier 90 Grain Silos
- Cargo Way Bicycle Improvements



Blue Greenway Planning and Design Guidelines

Next Steps

- **July 12th Port Commission meeting**
- **Community Outreach through CAC's & Stakeholder organizations**
- **Public Comment until July 29th**
david.beaupre@sfport.com
www.sfport.com/bluegreenway