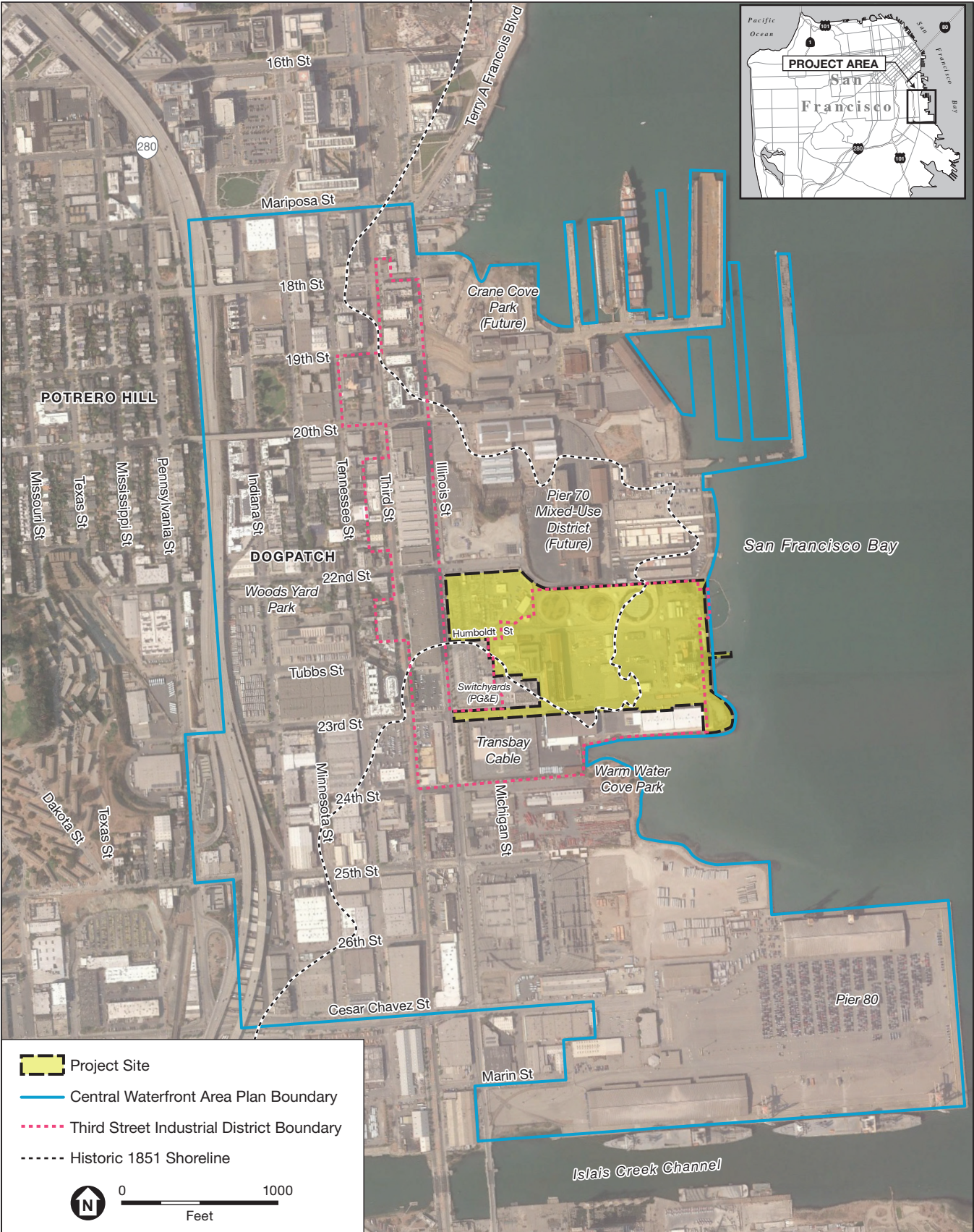


Exhibit 1: Site Location



SOURCE: Google Earth, 2017; ESA, 2018

Potrero Power Station Mixed-Use Development Project

Exhibit 2: Land Use Program

LEGEND



Residential



Hotel and/or Residential



Open Space



Office / R&D



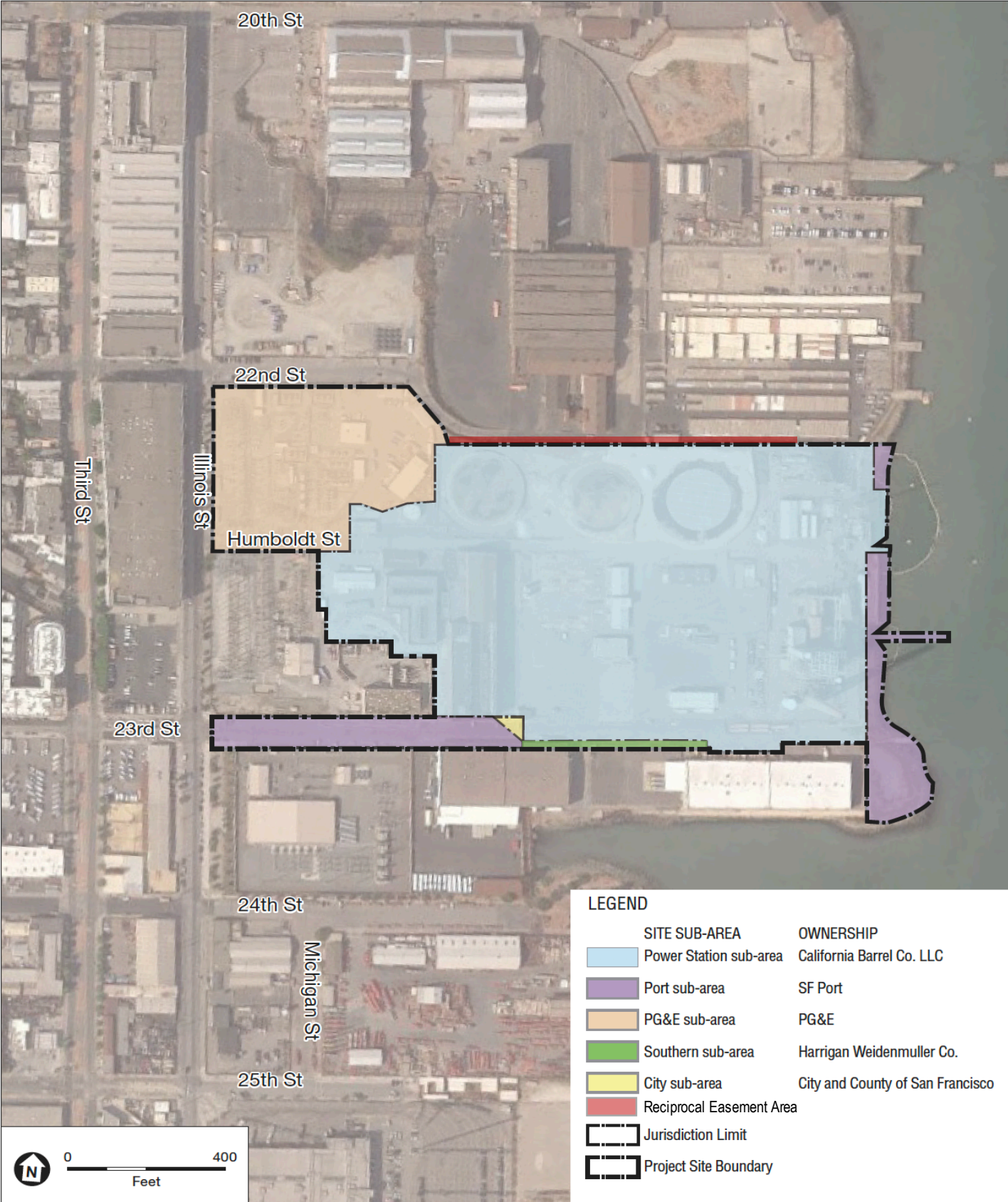
Potential District Parking
Garage and Publicly
Accessible Rooftop Soccer
Field Location



Project Site Boundary



Exhibit 3: Property Ownership

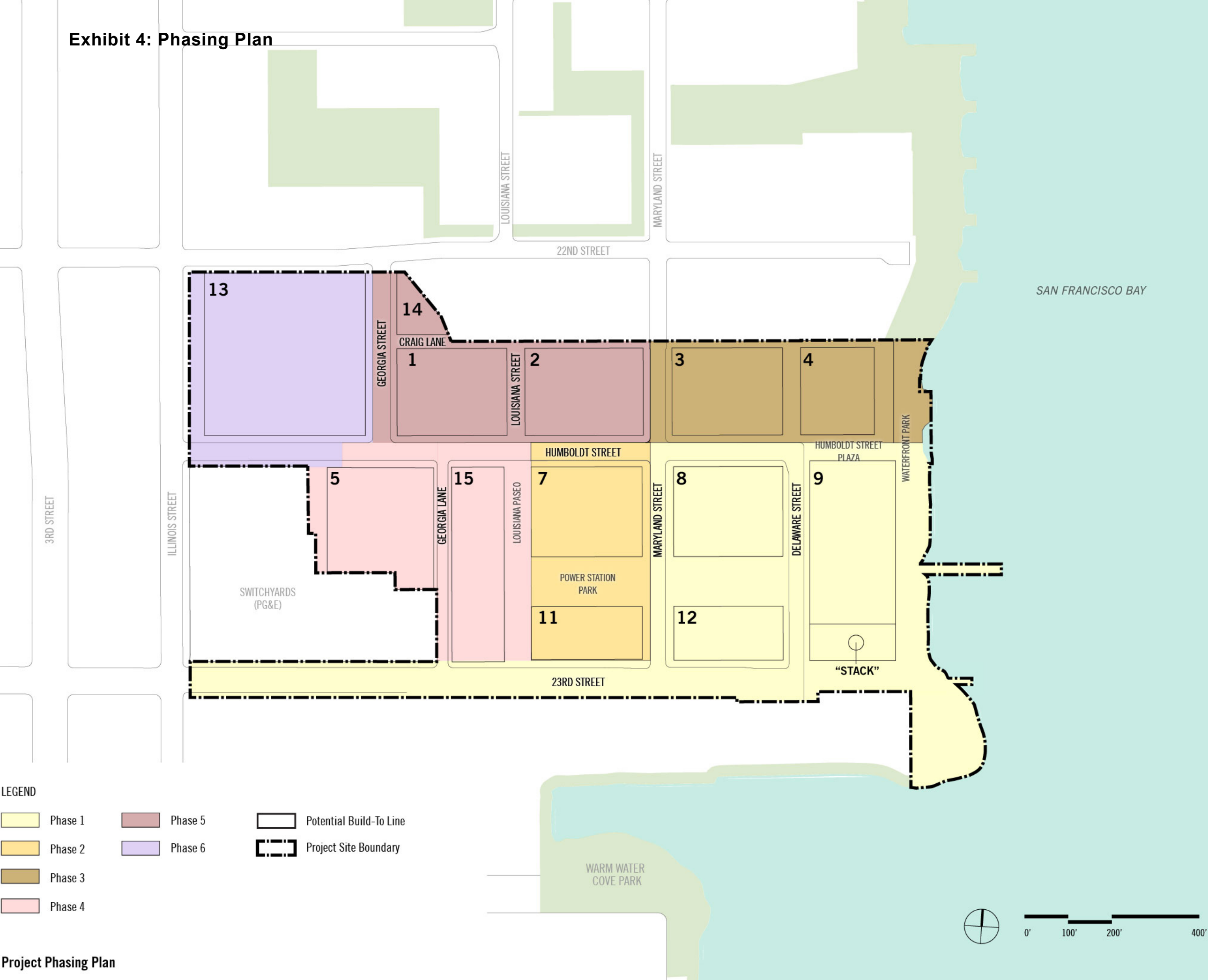


SOURCE: Perkins+Will 2017; Google Earth, 2017; ESA, 2018

Potrero Power Station Mixed-Use Development Project

Project Site Sub-Areas and Ownership

Exhibit 4: Phasing Plan



Project Phasing Plan

Exhibit 5: Public Trust Easement Option



① Waterfront Open Spaces:
Section 4.16-4.19

② Humboldt Street Plaza: Section 4.24

③ Block 9 Open Space: Section 4.22-4.23

④ Stack Plaza: Section 4.21

⑤ The Point: Section 4.20

⑥ Power Station Park East: Section 4.28

⑦ Power Station Park West: Section 4.29

⑧ Louisiana Paseo: Section 4.30

⑨ Rooftop U-10 Soccer Field: Section 4.31

★ Rooftop Soccer Field will be at the District Parking Garage,
which may be at Block 1, Block 5, or Block 13

⑩ Illinois Street Plaza: Section 4.32

 Port Lands = 1.6 acres

 Public Trust Easement Parcel = 2.0 acres (Waterfront Open Spaces = 0.9 acres, 23rd Street ROW = 0.9 acres, Other = 0.2 acres)