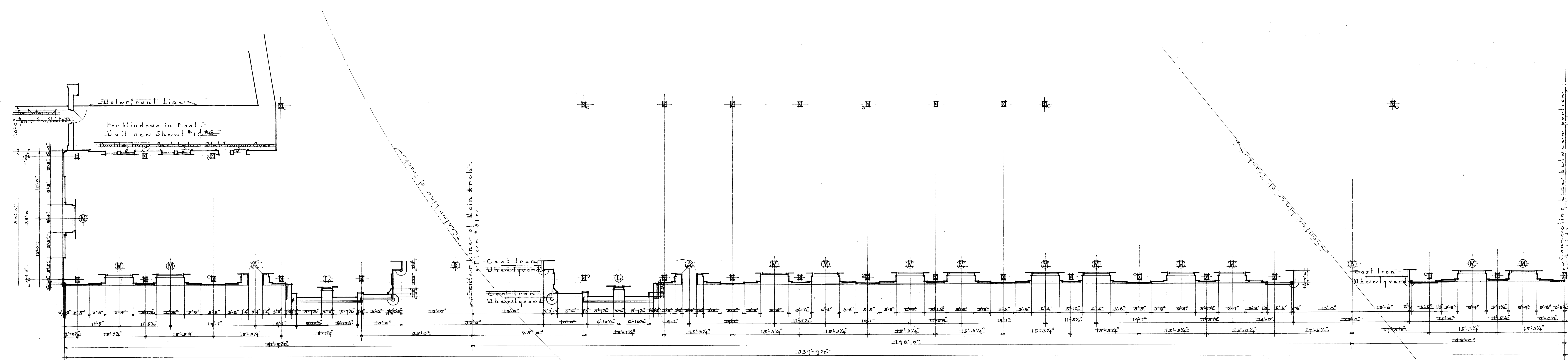
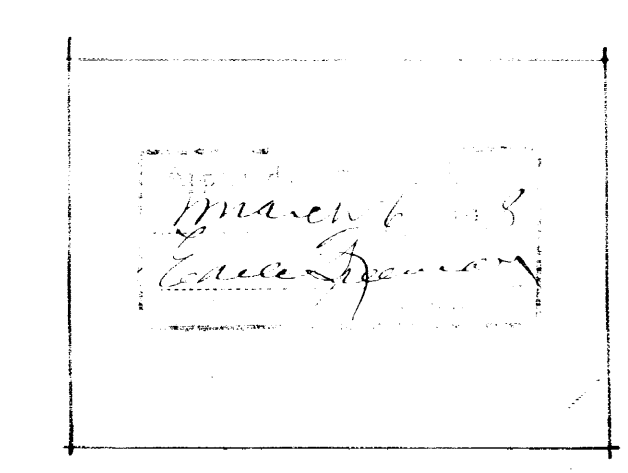


• FIRST FLOOR PLAN •  
Scale: 1/8 inch equals 1 foot



DOOR SCHEDULE		WINDOW SCHEDULE		GENERAL NOTES
Doors - 3 1/2 x 6 1/2	N o t e s	Windows - 3 1/2 x 6 1/2	N o t e s	For Column Sizes and Position of Studs in Wall and Sills in Wall. See Schedule. Dimensions of Exterior Walls given on this sheet are to finished opening. Dimensions when given to have perforations of 1/2 inch given by center. All finished hardware to be furnished by this contractor and to be selected by Chief Engineer. Datum is taken at zero City Base. The base line for all heights shown on drawing is 16.25' above City Base.
(A)	Metal Core one side Sash Door and Transom 2 1/2" thick	(M)	Stationary Sash to be 1 1/4" thick	
(B)	Steel Rolling Door	(N)	Lower Sash Stationary Transom hinged at bottom to be 2 1/4" thick	
	Doors scheduled to be window separate	(O)	Double Hing. Sash to be 1 1/4" thick Full Box frame	

• FIRST FLOOR PLAN •  
Scale: 1/8 inch equals 1 foot



RESPECTFULLY SUBMITTED  
*Frank B. White*  
 CHIEF ENGINEER  
 APPROVED - Feb. 7, 1910  
*James J. Williams*  
 COMMISSIONER

Plans for Pier # 314 Shed and Building between Pier # 29 & 31  
 Feb. 7, 1910  
 3302-35  
 277  
 297