



Stay safe and healthy this winter

Stay safe and healthy this winter and up to date on COVID-19 guidance with the resources below:

- [SF Department of Public Health COVID-19 Alerts](#)
- [COVID-19 Information and Resources](#)
- [Timeline](#)

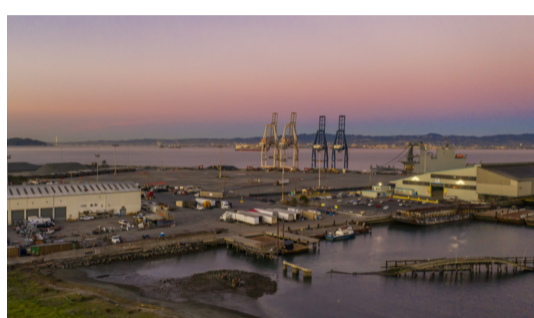
Central and southern waterfront engagement

Thank you community partners A. Philip Randolph Institute, SF Public Housing Tenants Association, and St. John Missionary Baptist Church for co-hosting virtual Waterfront Resilience Program engagement events.

Join the Port and City partners as we continue digital presentations to central and southern waterfront community-based and neighborhood associations. The next presentation will be at the Hunters Point Shipyard Citizens Advisory Committee meeting on **Monday, February 8, 5:00 - 8:00 PM**.

Check the full schedule and register via the Eventbrite links below:

- [Islais Creek / Bayview](#)
- [Mission Creek / Mission Bay](#)



Have a question for us?

The Port and San Francisco Planning Department will be addressing questions on reducing seismic and flood risk to San Francisco's central and southern waterfront. Sign up below to join us:

- [Tuesday, February 9, 12:00 - 1:00 PM](#)
- [Wednesday, February 24, 5:00 - 6:00 PM](#)

King Tides



View King Tides **photos** from late 2020 and early 2021 and watch the King Tides Crane Cove Park **video**.

Share your photos with the Port on social media with hashtags #SFPort and #KingTides.

Waterfront resilience in the news

Read [recent coverage](#) from the San Francisco Chronicle on the passage of the federal Water Resources Development Act and how it will benefit the Port of San Francisco's waterfront resilience efforts.

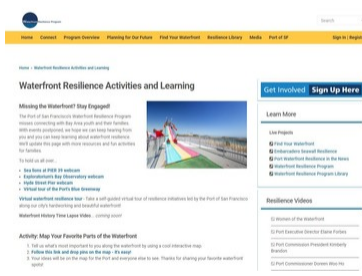


Reflecting on 2020 and welcoming 2021

2020 Waterfront Resilience Program highlights include:

- The release of the [Multi-Hazard Risk Assessment](#) for the Embarcadero Seawall geography.
- Passage of the federal Water Resources Development Act and continued partnership with the U.S. Army Corps of Engineers on the USACE Flood Resiliency Study for the entire bayside waterfront geography.
- Engagement through [community meetings and mixers](#) in the southern, central, and northern waterfronts; the [Family Fun page](#), [Waterfront Resilience Story Maps](#), [Measures Explorer](#); a [virtual waterfront resilience tour](#); and a [virtual field trip](#) to Mission Creek with students from 826 Valencia's Mission Bay Center.

The Port looks forward to connecting with you this year.



sfportresilience.com



Copyright © 2021 Port of San Francisco, All rights reserved.

You are receiving this email because you signed up on our website, at a community meeting, or through a Port of San Francisco staff member.

Share this email:



[Manage](#) your preferences | [Opt out](#) using TrueRemove®
Got this as a forward? [Sign up](#) to receive our future emails.
View this email [online](#).

Pier 1, The Embarcadero
San Francisco, CA | 94111 US

This email was sent to .
To continue receiving our emails, add us to your address book.



[Subscribe](#) to our email list.



COVID-19 vaccine updates

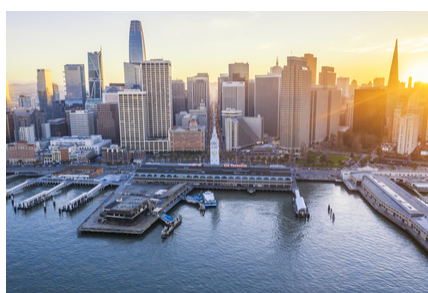
All Californians over the age of 16 are now eligible for COVID-19 vaccines. Vaccines are free to people who live and work in San Francisco and you do not need insurance to book an appointment. View the COVID-19 vaccine resources below.

- [Sign up for vaccine appointments](#)
- [Learn more about San Francisco's vaccination plan](#)
- [Stay up to date on current public health orders and alerts](#)

San Francisco is resilient

This Sunday marks the 115th anniversary of the 1906 earthquake. At 5:12 AM on April 18, 1906, the great earthquake sent tremors throughout the Bay Area. Shaking lasted up to a minute and the quake was felt in Oregon, Nevada and Los Angeles, CA.

Just like the months following the 1906 quake, San Franciscans have come together this year to take care of each other and adapt to a new way of life. San Francisco has demonstrated yet again that we can overcome the unexpected.

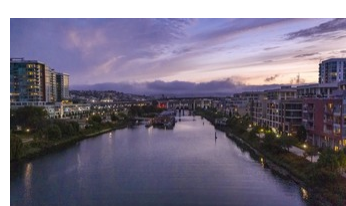


Thank you to community partners

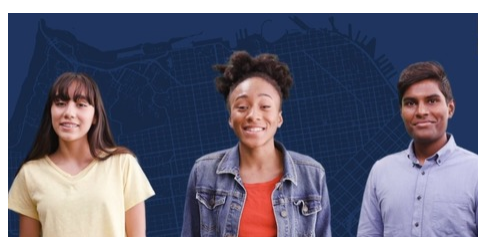
Thank you community partners -- Friends of Esprit Park, Hunters Point Shipyard CAC, Southeast Community Facility & Design Committee, Mission Bay CAC, Potrero Boosters, and Greenaction - for hosting the Port and City partners. Learn more about questions and feedback from those presentations by clicking the links below:

- [Mission Creek / Mission Bay](#)
- [Islais Creek / Bayview](#)

The Port is continuing to connect with community and neighborhood organizations in the southern and central waterfront. Stay tuned for additional meeting information.



Youth engagement



The Port is collaborating with youth-serving organizations across San Francisco, including 826 Valencia and Young Community Developers, to discuss waterfront resilience. The Port is eager to receive feedback from young people to help guide the Program and ensure a waterfront that is open and welcoming for everyone.

Check out [this short video](#) produced by [BAYCAT](#), a San Francisco innovative media organization focused on serving low-income youth, young people of color, and young women in the Bay Area.

Celebrate Climate Action Month along the waterfront

April is Climate Action Month! The Port is proud to join SF Environment and other City partners to promote sustainability and mitigate and adapt to climate change.

Check out the [events, activities, and workshops](#) this month, including [#BaysideSaturdays](#) along the India Basin and Hunter's Point shoreline.



sfportresilience.com



Copyright © 2021 Port of San Francisco. All rights reserved.

You are receiving this email because you signed up on our website, at a community meeting, or through a Port of San Francisco staff member.

Share this email:



[Manage](#) your preferences | [Opt out](#) using TrueRemove®
Got this as a forward? [Sign up](#) to receive our future emails.
View this email [online](#).

Pier 1, The Embarcadero
San Francisco, CA | 94111 US

This email was sent to .
To continue receiving our emails, add us to your address book.



[Subscribe](#) to our email list.



San Francisco is re-opening

San Francisco has made great progress in meeting the State's reopening criteria based on its COVID-19 health metrics. San Francisco is now in the "Yellow Tier" and has expanded almost all indoor activities to 50% indoor capacity, unless limited by State guidance. This is an important milestone for our city's economic recovery efforts. This summer, support local businesses safely, follow public health guidance, and support San Francisco! For additional COVID-19 information and announcements, refer to the resources below:

- [Sign up for vaccine appointments](#)
- [Stay up to date on current public health orders and alerts](#)
- [Read up on mayoral declarations](#)

Bringing back our waterfront economy

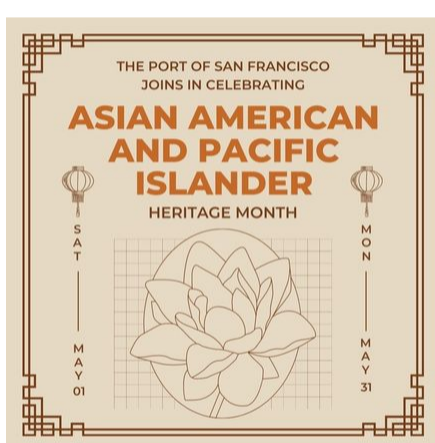
Last week, Governor Newsom announced that \$250 million from the American Rescue Plan will be allocated to California ports, like the Port of San Francisco, to aid in economic recovery efforts due to revenue loss from the COVID-19 pandemic. Funding is expected in Fall 2021.



Pre-pandemic, the Port welcomed over 24 million visitors annually and supported 10,000 jobs and \$1.2 billion in wages. During the pandemic, despite revenue loss, the Port has continued to support its tenants through rent relief, loan, and outdoor dining programs.

Although the exact allocation is to be determined and approved by the state legislature, stimulus funding announced last week could provide vital support to avoid layoffs, reimburse rent relief efforts, and restore capital maintenance projects - all critical to the Port's long-term recovery.

Honoring Asian American and Pacific Islander Month



With May, the Port recognizes the unique contributions, histories, and resilience of Asian American and Pacific Islander communities in San Francisco and acknowledges that the history of the waterfront has not always been one of inclusion.

Past exclusionary policies like the Chinese Exclusion Act of 1882 and Japanese internment during World War II, as well as present-day discrimination and ongoing anti-Asian violence, are reminders of the importance of re-examining work to ensure San Francisco's waterfront truly serves as the Gateway to the City for all.

Check out the Port's [Facebook](#), [Instagram](#), and [Twitter](#) for #AAPIHeritageMonth posts featuring the amazingly talented staff, Port leaders, and Asian-owned businesses representing the diversity of the AAPI community and their contributions to making our waterfront a vibrant destination.

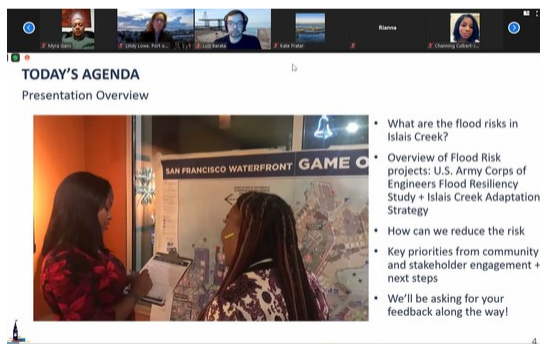
Ongoing youth engagement

The Port wants to ensure that San Francisco's youth have an opportunity to participate in the Waterfront Resilience Program. The Port will be hosting virtual presentations with youth-serving organizations to share resilience updates, ask questions about community priorities, and hear feedback about the Program.



Activities include creative workshops where participants will be encouraged to express their ideas on how to best preserve and protect the waterfront.

Upcoming community presentations



This spring and summer, the Port will be sharing Waterfront Resilience Program updates virtually to community-based organizations and neighborhood associations along the waterfront and throughout the city. This outreach effort continues the Port's commitment to communicate its work and keep all of San Francisco informed on the waterfront's vital importance to our city by the bay.

sfportresilience.com



Copyright © 2021 Port of San Francisco, All rights reserved.

You are receiving this email because you signed up on our website, at a community meeting, or through a Port of San Francisco staff member.

Share this email:



[Manage](#) your preferences | [Opt out](#) using TrueRemove®

Got this as a forward? [Sign up](#) to receive our future emails.

View this email [online](#).

Pier 1, The Embarcadero
San Francisco, CA | 94111 US

This email was sent to .
To continue receiving our emails, add us to your address book.



[Subscribe](#) to our email list.



COVID-19 Updates

The Port welcomes back visitors and residents this summer with the reopening of Pier 1, hosting Fourth of July fireworks, and celebrating the opening of **Red Bay Coffee**, a new Black Owned business at the Ferry Building. Although San Francisco continues to reduce COVID-19 cases and hospitalizations, and increase vaccinations, it remains important to follow public health guidance. See **[tips from the SF Department of Public Health](#)**. Additional COVID-19 information and resources below:

- **[Sign up for vaccine appointments](#)**
- **[Stay up to date on current public health orders and alerts](#)**
- **[Read up on mayoral declarations](#)**

Summer on the Waterfront

Pre-pandemic, the Port welcomed over 24 million visitors a year and supported 10,000 jobs and \$1.2 billion in wages. Many of our Port visitors arrived during the summer months.

The Port is excited for the following activities and milestones to welcome visitors to the waterfront:

- Black Owned business Red Bay Coffee opened at the Ferry Building on June 11
- Pier 1 lobby, restrooms, and public access from the Embarcadero reopened in concert with other City facilities on June 15
- Juneteenth Celebration at the Ferry Building on June 19
- Fourth of July fireworks on July 4



All of the waterfront's renowned open space, from the 13 acres of Heron's Head Park, the newly opened Crane Cove Park, and historic Aquatic Park and Pier, continues to offer stunning surrounds for outdoor summer outings.

Governor Newsom Announces California Comeback Plan from Ferry Building on June 14

The day before California's full reopening, Governor Gavin Newsom highlighted his proposed **California Comeback Plan** investments to jump-start the state's travel economy.

The Port thanks Governor Gavin Newsom for his leadership with the American Rescue Plan. California ports like the Port of San Francisco are the backbones to local economies and to treasured local, regional, and international tourism destinations. This plan ensures speedy economic recovery for our waterfront community and the entire state.

The Port is excited to welcome everyone back to our waterfront! Come on down for food, fun, and activities all can enjoy!



Happy Pride Month

The Port of San Francisco proudly supports our LGBTQIA+ community.

All along the Embarcadero, the waterfront is Pride ready! Check out the Port's social media accounts on **Facebook**, **Twitter**, and **Instagram** for posts celebrating #Pride2021.



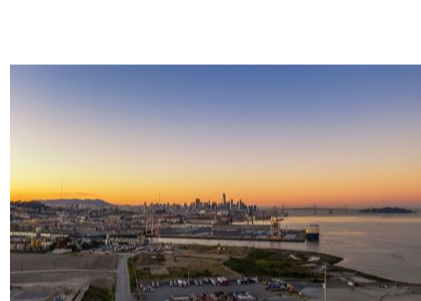
Celebrating Juneteenth



The Port has partnered with CUESA and MegaBlack SF to sponsor the Juneteenth celebration that will be held at the Embarcadero Ferry Terminal Plaza. The celebration is intended to bring Black community organizers, businesses, chefs, and artists together to host Juneteenth food traditions and education. Additionally, the Port will share how African Americans helped shape the SF waterfront by creating a video that highlights their significant contributions. The event will run concurrently with the Farmers Market, from 8 AM to 2 PM on Saturday, June 19.

Islais Creek Southeast Mobility Adaptation Strategy

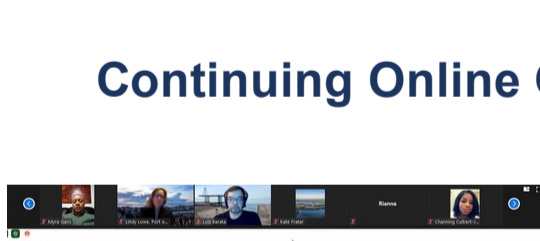
The Islais Creek Southeast Mobility Adaptation Strategy (ICSMAS) represents a two-year community planning process led by SF Planning along with the Port, SFPUC, and SFMTA. It is the City's first look at combined flooding - including coastal flooding, sea level rise, and storm surge - and outlines a long-range vision for creating a sustainable economy, healthy environment, and robust transportation throughout the Islais Creek district through 2080. The work, funded by a Caltrans grant, wraps up this month with the submission of the final report.



Community engagement for ICSMAS included three in-person workshops, two holiday mixers, and a waterfront walking tour between 2019 and winter 2020, as well as a series of online meetings and virtual engagement from November 2020 to May 2021. The feedback from these community events shaped the vision and goals that guided development of the Adaptation Strategy and will continue to lead the Port's ongoing resilience work and outreach in the southern waterfront.

[Learn more about the Islais Creek Adaptation Strategy.](#)

Continuing Online Community Engagement



The Port will be continuing its youth-focused and online community engagement through a series of virtual meetings and presentations this summer. This online approach prioritizes public health and safety in sharing key updates on the Waterfront Resilience Program while the Port continues to monitor for opportunities to safely resume in-person engagement activities.

Port Resilience in the News

The Waterfront Resilience Program is making headlines. Catch up on the latest stories and features:

- **[OpenRoad: San Francisco Bay Trail's Continued Growth](#)** video spotlights making the 500-mile San Francisco Bay Trail resilient to sea level rise
- **[San Francisco Chronicle "Rising Reality"](#)** four-part series begins with the challenges of addressing sea level rise in Mission Creek and how decisions in this community affect all nine Bay Area counties

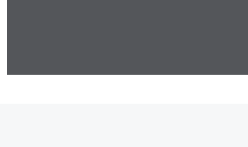
sfportresilience.com



Copyright © 2021 Port of San Francisco, All rights reserved.

You are receiving this email because you signed up on our website, at a community meeting, or through a Port of San Francisco staff member.

Share this email:



[Manage](#) your preferences | [Opt out](#) using TrueRemove®

Got this as a forward? [Sign up](#) to receive our future emails.

View this email [online](#).

Pier 1, The Embarcadero
San Francisco, CA | 94111 US

This email was sent to .
To continue receiving our emails, add us to your address book.

[Subscribe](#) to our email list.



COVID-19 Updates

The Port continues its efforts to safely reopen the waterfront for summer with full alignment of San Francisco's public health and safety guidance, including the **August 2 universal requirement for wearing indoor masks**.

See **tips from the SF Department of Public Health**. Additional COVID-19 information and resources below:

- **Sign up for vaccine appointments**
- **Stay up to date on current public health orders and alerts**
- **Read mayoral declarations**

Summer Waterfront Activities and Fall Warm-up

The waterfront is home to many small and family-owned businesses that employ more than 10,000 people. The Port is excited for these summer updates that support bringing residents and visitors back to the waterfront and will help these businesses and their employees get back to work.



- The **historic streetcar F-line** is back in action, and San Francisco's iconic cable cars are scheduled to resume service in July.
- On **July 1, the Exploratorium opened** its doors as ferry service increased.
- The **Giants** have welcomed back fans to full-capacity seating.

The Port is also planning for the return of Fleet Week in October and to bring back cruises in the fall.

Your Ideas for Waterfront Events and Activities

Have an idea for an activity or temporary event on the waterfront? The Port wants to hear them! The Port is seeking partners to help celebrate waterfront parks and open spaces with temporary events and activities. Locations include:

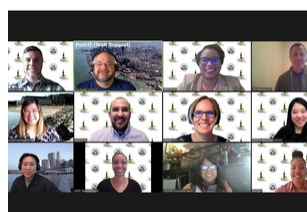


- Heron's Head Park
- Crane Cove Park
- Pier 30-32
- Cruise Terminal Plaza
- Pier 29 Open Space

For more details and event contact information per location, visit the **Port of San Francisco Special Events page**.

Launching Virtual "Ask Me Anything"

This summer, a virtual "Ask Me Anything" is bringing Port staff directly to community members to answer questions about the **Waterfront Resilience Program**. These online sessions are scheduled the second and third Thursday of the month. Click the links below to sign up for the next Ask Me Anything and view the full schedule.



- **Thursday, August 12, 4:30 - 5:00 PM: Mission Creek / Mission Bay**
- **Thursday, August 19, 4:30 - 5:00 PM: Citywide**
- **Thursday, August 19, 5:00 - 5:30 PM: Islais Creek / Bayview**

Thank You, Community Partners!



Thank you to the dozens of community organizations who have hosted the Port this summer for an online Waterfront Resilience Program presentation. In June and July, we connected with 21 community organizations and have several more presentations scheduled in August. More than 500 community members have logged on to join us.

Port Resilience in the News

The Port and the Waterfront Resilience Program is making headlines. Catch up on the latest stories and features:

- **NY Times: An Earthquake in Japan Speaks to a Sea Wall in San Francisco** part of a climate solutions series, reports on the complexity of addressing both urgent seismic risks and long-term sea level rise adaptations

sfportresilience.com



Copyright © 2021 Port of San Francisco, All rights reserved.

You are receiving this email because you signed up on our website, at a community meeting, or through a Port of San Francisco staff member.

Share this email:



[Manage](#) your preferences | [Opt out](#) using TrueRemove®

Got this as a forward? [Sign up](#) to receive our future emails.

View this email [online](#).

Pier 40, The Embarcadero
San Francisco, CA | 94107 US

This email was sent to .
To continue receiving our emails, add us to your address book.

[Subscribe](#) to our email list.



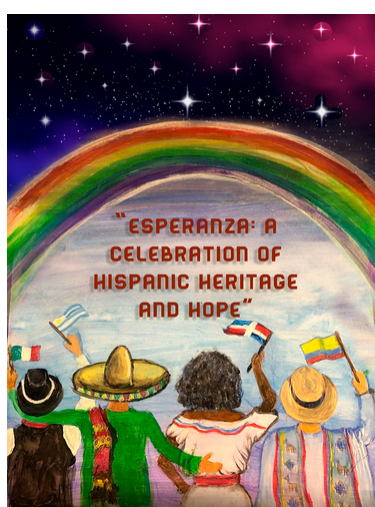
COVID-19 Updates

The Port continues its efforts to safely operate the waterfront in full alignment with San Francisco's public health and safety guidance, including the **August 2 universal requirement for wearing masks indoors** as well as the **August 20 proof of vaccination requirement for some indoor establishments**.

See **updates from the SF Department of Public Health**. Additional COVID-19 information and resources below:

- [Sign up for vaccine appointments](#)
- [Read mayoral declarations](#)

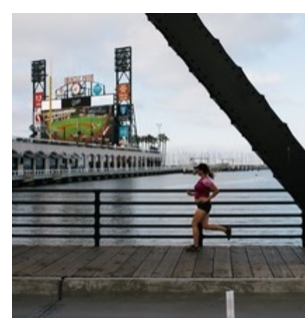
Honoring Latinx Heritage Month



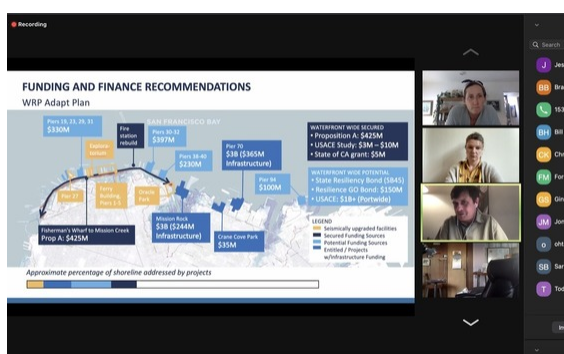
The Port celebrates and recognizes September 15 to October 15 as **Latinx Heritage Month**, a time to honor the cultures, contributions, histories and diversity of Latino and Latinx Americans as well as the heritages rooted in all Latin American countries. Introduced as a one-week commemoration by California Congressman George E. Brown in June 1968 during the Civil Rights Movement, observation began under President Lyndon B. Johnson later that year, was extended to a 30-day celebration by President Ronald Reagan, and enacted into law in 1988. September 15 became the Latinx Heritage Month start day as the independence anniversary for Latin American countries El Salvador, Guatemala, Costa Rica, Nicaragua, and Honduras. This year's theme for Latinx Heritage Month is "Esperanza: A Celebration of Hispanic Heritage and Hope."

On Your Marks, Get Set, Go!

Best of luck to all runners participating in this year's **San Francisco marathon**, Saturday and Sunday, September 18 and 19. Whether virtual or in-person, warming up with the 5K or going the full distance, the course includes plenty of waterfront highlights. Check out photos and more from #RunThePort #SummerOnTheWaterfront #SFMarathon from the Port's [Facebook](#), [Twitter](#), and [Instagram](#).



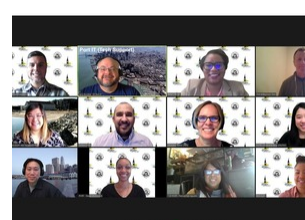
Thank You, Community Partners!



Thank you to the dozens of community organizations who have hosted the Port this summer for an online Waterfront Resilience Program presentation. These events have been central in continuing to digitally engage with communities citywide. In June, July, and August we connected with 28 community organizations and have several more presentations scheduled in September. More than 600 community members have logged on to join us!

Virtual Ask Me Anything

This summer's virtual "Ask Me Anything," a monthly series to help connect Port staff directly with community members and answer questions about the **Waterfront Resilience Program** wrapped up this month. The Port is happy to have had the opportunity to continue to understand what matters most to you and talk about what it means to be resilient in Islais Creek / Bayview, Mission Creek / Mission Bay, and Citywide.

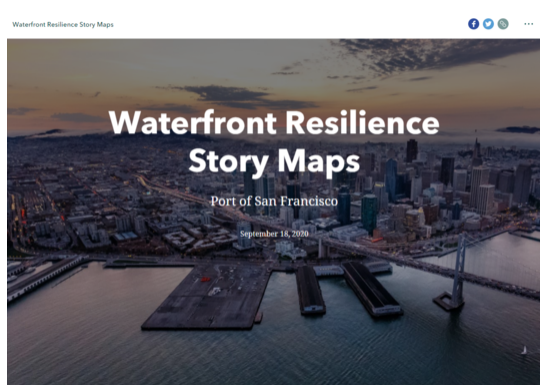


Look for the Port at Upcoming Community Events

The Port is excited to be resuming in-person outdoor community events in the fall. Look for the Port at upcoming neighborhood farmers markets, street fairs and festivals, family events, and more at locations citywide. Our team will be giving away printed copies of children's activity books featuring waterfront favorites (also available for [download here](#)), challenging anyone who is game to answer waterfront trivia, and encouraging community members to think about their personal connection to the waterfront with a pledge.



Flashback Friday: Waterfront Resilience Story Maps



Interested in learning more about the earthquake and flood risks facing the waterfront and how these risks could affect transportation, utilities, disaster response, historic and cultural landmarks, and more? Take a deep dive with the **Waterfront Resilience Story Maps**, posted last summer to share what has been learned from the results of the Multi-Hazard Risk Assessment, the ongoing U.S. Army Corps of Engineers Flood Resiliency Study, and others efforts.

sfportresilience.com



Copyright © 2021 Port of San Francisco, All rights reserved.

You are receiving this email because you signed up on our website, at a community meeting, or through a Port of San Francisco staff member.

Share this email:



[Manage](#) your preferences | [Opt out](#) using TrueRemove®

Got this as a forward? [Sign up](#) to receive our future emails.

View this email [online](#).

Pier 1 The Embarcadero
San Francisco, CA | 94111 US

This email was sent to .

To continue receiving our emails, add us to your address book.

[Subscribe](#) to our email list.



COVID-19 Updates

The Port continues its efforts to safely operate the waterfront in full alignment with San Francisco's public health and safety guidance, including the August 2 universal requirement for wearing masks indoors as well as the **August 20 proof of vaccination requirement for some indoor establishments**.

See [updates from the SF Department of Public Health](#). Additional COVID-19 information and resources below:

- [Sign up for vaccine appointments](#)
- [Read mayoral declarations](#)

1989 Loma Prieta Earthquake Anniversary



October 17 marks the 32-year anniversary of the Loma Prieta earthquake. Centered about 60 miles from the Embarcadero Seawall and based on activity along the San Andreas Fault to the south near Santa Cruz, the 6.9 magnitude earthquake was smaller than the 1906 earthquake. Effects were seen in the East Bay and in the nearshore areas of Monterey Bay. As always at this time of year, we reflect on the indelible changes from the earthquake and the Port's commitment to working with City partners to continue to improve earthquake safety and

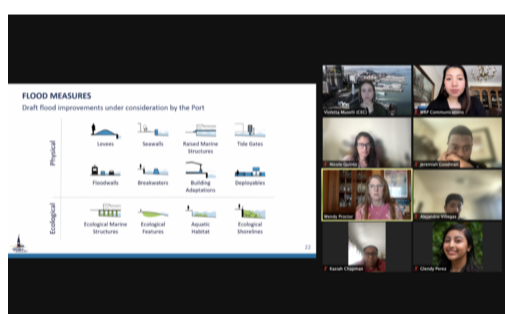
emergency response and recovery.

Fleet Week Returns to the Waterfront

San Francisco Fleet Week returned to the waterfront earlier this month. Hosted October 3 to 11, this year's community events represented an opportunity to celebrate the diverse partnerships strengthened by these activities. Fleet Week began in 1981 when then-Mayor Dianne Feinstein led the nation in celebrating America's sea services. Traditionally held over Italian Heritage Weekend and generating over \$10 million in annual revenue for the city, Fleet Week is a unique training and education program. It is recognized by the U.S. Department of Defense as the model for fleet weeks across the county. This year's Fleet Week included the emergency and disaster response equipment presented at the Humanitarian Assistance Village and the STEM Education Center, a fully interactive and educational program designed to inspire youth in the fields of science and technology. Check out highlights on the Port's [Facebook](#), [Instagram](#), and [Twitter](#) #FleetWeekSF.



Spotlight on Citywide Youth Engagement



Thank you to the 65 youth community leaders and the partners at four youth-based community organizations who connected with Waterfront Resilience Program team members this summer. This virtual roadshow was a special opportunity to talk with future leaders about the earthquake and coastal flood risks facing the waterfront. We also heard directly from youth on their ideas for how to build a resilient waterfront and connect the resilience of our waterfront to the community topics that most concern or interest them.

Get Ready for King Tides

As the seasons start to turn, we're getting close to the winter King Tides, which are December 4-5, 2021, and January 2-3, 2022. King Tides are an important reminder of the impacts sea level rise will have on our waterfront. The California King Tides Project wants your photos as part of a statewide effort to engage communities on King Tides and Sea Level Rise. Learn more, including information about local tide times and heights, as well as how to share and submit photos, at California.KingTides.net.



sfportresilience.com



Copyright © 2021 Port of San Francisco, All rights reserved.

You are receiving this email because you signed up on our website, at a community meeting, or through a Port of San Francisco staff member.

Share this email:



[Manage](#) your preferences | [Opt out](#) using TrueRemove®

Got this as a forward? [Sign up](#) to receive our future emails.

View this email [online](#).

Pier 1 The Embarcadero
San Francisco, CA | 94111 US

This email was sent to .
To continue receiving our emails, add us to your address book.

[Subscribe](#) to our email list.



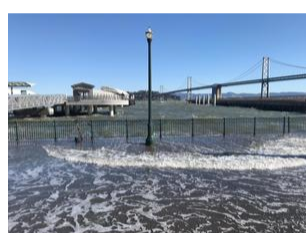
Restarting Outdoor In-Person Events

Look for the Port at an upcoming outdoor neighborhood event! Starting this month, the Waterfront Resilience Program will be coming back to neighborhood farmers markets, street fairs and festivals, family events, and more at locations citywide. Our team will be giving away printed copies of the children's activity book featuring waterfront favorites (also available for [download here](#)), challenging anyone who is game to answer waterfront trivia, and encouraging community members to think about their personal connection to the waterfront with a pledge. Thank you to all our community partners who have hosted the Port for digital events this past year to make ongoing community engagement possible!



Join the Port and Exploratorium for a King Tides Embarcadero Walk

The Port's Waterfront Resilience Program team is partnering with the Exploratorium once again for a King Tides walk along the Embarcadero. The Exploratorium is hosting the walk Saturday, December 4, from 10:15 to 11:15 AM, between Piers 3 and 5, to talk about what causes King Tides and why they happen at this time of year. Port staff will be on hand to talk about the history of the Embarcadero Seawall, its role in the story of San Francisco's waterfront, and how the Port is preparing for sea level rise. Sign up and learn more at the [Exploratorium events calendar](#).

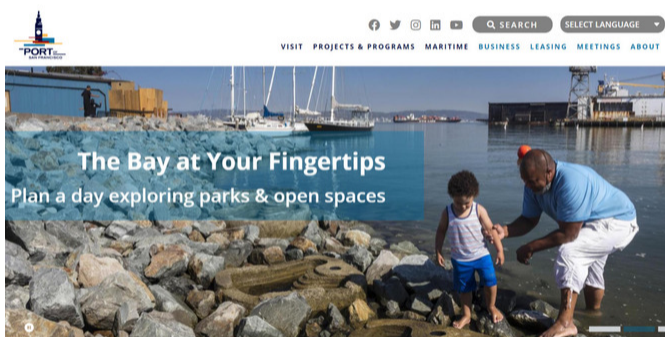


Get Ready for King Tides

As the seasons start to turn, we're getting close to the winter King Tides, which are December 4-5, 2021, and January 2-3, 2022. King Tides are an important reminder of the impacts sea level rise will have on our waterfront. The California King Tides Project wants your photos for "Snap the Shore, See the Future," as part of a statewide effort to engage communities on King Tides and sea level rise. Learn more, including information about local tide times and heights, as well as how to share and submit photos, at California.KingTides.net. Check out submitted photos from the previous three years of [Snap the Shore, See the Future](#).

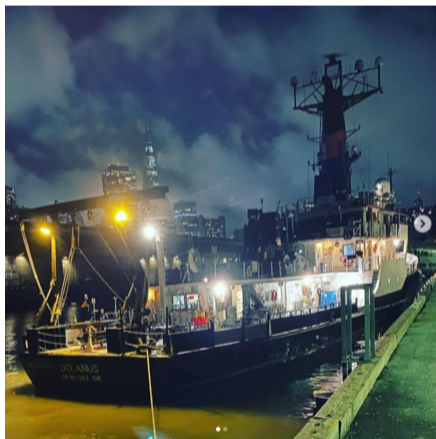


Visit Us on the Port's Redesigned Website



Everything you need to know about the Waterfront Resilience Program can be found on the Port of San Francisco's recently redesigned website. This includes community feedback, community resources and materials, video clips, press coverage, and more. Come check it out at sfport.com/wrp!

ICYMI: Photos from October's Storm



The Bay Area experienced record rain in October. The Port's Instagram captured a part of it with a photo of the ship RV Oceanus pulling into dock to ride out the bad weather. Get more of what's happening along the waterfront - from the return of favorite activities to looks back in time with historic images - and share your comments by following [@sf_port](#).

COVID-19 Updates

The Port continues its efforts to safely operate the waterfront in full alignment with San Francisco's public health and safety guidance, including the August 2 universal requirement for wearing masks indoors as well as the [August 20 proof of vaccination requirement for some indoor establishments](#).

See [updates from the SF Department of Public Health](#). Additional COVID-19 information and resources below:

- [Sign up for vaccine appointments](#)
- [Read mayoral declarations](#)

sfport.com/wrp



Copyright © 2021 Port of San Francisco, All rights reserved.

You are receiving this email because you signed up on our website, at a community meeting, or through a Port of San Francisco staff member.

Share this email:



[Manage](#) your preferences | [Opt out](#) using TrueRemove®

Got this as a forward? [Sign up](#) to receive our future emails.

View this email [online](#).

Pier 1 The Embarcadero
San Francisco, CA | 94111 US

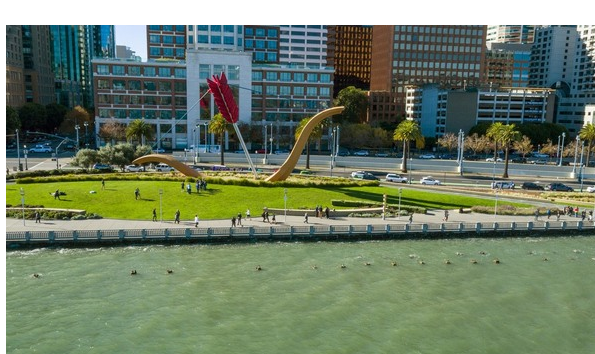
This email was sent to .
To continue receiving our emails, add us to your address book.

[Subscribe](#) to our email list.



Join Us for an Online Embarcadero Seawall Community Meeting!

Join the Port of San Francisco staff **Friday, December 17, 1:30-2:30 PM**, or **Wednesday, January 12, 5:30-6:30 PM**, for an online community meeting focused on coordinated resilience efforts along the Embarcadero waterfront. Port staff will share a half-hour presentation and update on the Embarcadero Seawall Program and Waterfront Resilience Program, followed by a half-hour for Q&A. The same material will be presented at both meetings. [Learn more and sign up here to join!](#)



Catch up on the latest Embarcadero Seawall news coverage, including:

- [S.F.'s plans to protect the Embarcadero from earthquakes and sea level rise could transform the Ferry Building](#) (San Francisco Chronicle, December 10, 2021)
- [S.F.'s Embarcadero needs to be raised as much as 7 feet to prepare for sea level rise, city says](#) (San Francisco Chronicle, November 7, 2021)

Back in Action: In-Person Community Outreach

Last month, the Port resumed in-person outreach at outdoor community events. Community health and safety continues to be the Port's top priority in returning to these wonderful citywide events. In-person outreach at outdoor events will continue into 2022. Keep an eye out for the Port! Try out waterfront trivia, take your own waterfront resilience pledge, and bring home copies of the children's activity book featuring waterfront favorites (also [available for download here](#)).



Thank You Community Partners

Thank you to all of our community partners who hosted the Port in 2021. More than 40 organizations welcomed Port staff this year to their online meetings to share updates about the Waterfront Resilience Program and engage with nearly 900 community members to talk about their questions and concerns for building an equitable, sustainable waterfront for the future. Your support has allowed the Port to continue and build on engagement that has connected us with tens of thousands of community members since 2017 while maintaining a commitment to public health and safety.

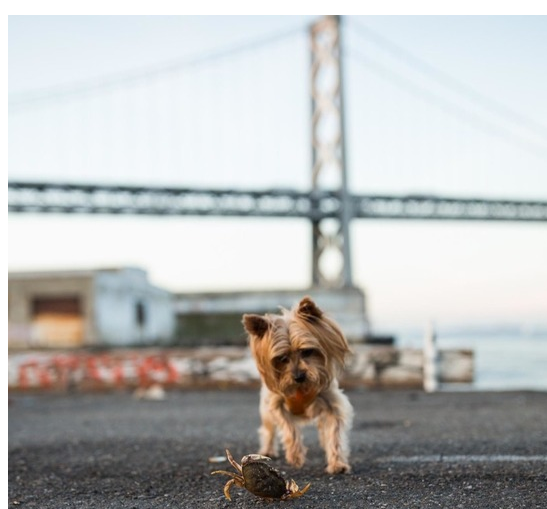


Happy and Healthy Wishes Heading into 2022

In 2021, many of San Francisco's favorite and iconic activities safely returned to the waterfront, including:

- Historic streetcar F-line service
- Businesses reopening and new business launches
- Full-capacity seating at the Giants' ballpark
- Runners and fans of the San Francisco marathon
- Fleet Week

In looking ahead to 2022, the Port is proud to celebrate the continued safe reopening of the many local businesses and 13 acres of public open space that make San Francisco's waterfront a diverse and vibrant destination.



COVID-19 Updates

The Port continues its efforts to safely operate the waterfront in full alignment with San Francisco's public health and safety guidance to protect against the spread of COVID-19.

See [updates from the SF Department of Public Health](#). Additional COVID-19 information and resources below:

- [Sign up for vaccine appointments](#)
- [Read mayoral declarations](#)

sfport.com/wrp



Copyright © 2021 Port of San Francisco, All rights reserved.

You are receiving this email because you signed up on our website, at a community meeting, or through a Port of San Francisco staff member.

Share this email:



[Manage](#) your preferences | [Opt out](#) using TrueRemove®

Got this as a forward? [Sign up](#) to receive our future emails.

View this email [online](#).

Pier 1 The Embarcadero
San Francisco, CA | 94111 US

This email was sent to .

To continue receiving our emails, add us to your address book.

[Subscribe](#) to our email list.