



US Army Corps  
of Engineers®



Waterfront Resilience Program

Waterfront Resilience Program Update

Port Commission – 13B

August 13, 2019

# AGENDA

- 1 Introducing the Waterfront Resilience Program
- 2 Update on the Embarcadero Seawall Program
- 3 Update on the USACE/Port Flood Study
- 4 PEC Contract Update
- 5 Local Business Participation & Workforce Development
- 6 Funding Update

# PORT-WIDE RESILIENCE



The Port Commission directed the expansion of the Port's resilience efforts Port-wide.

The result is a far more robust, collaborative, and integrated effort: the Waterfront Resilience Program

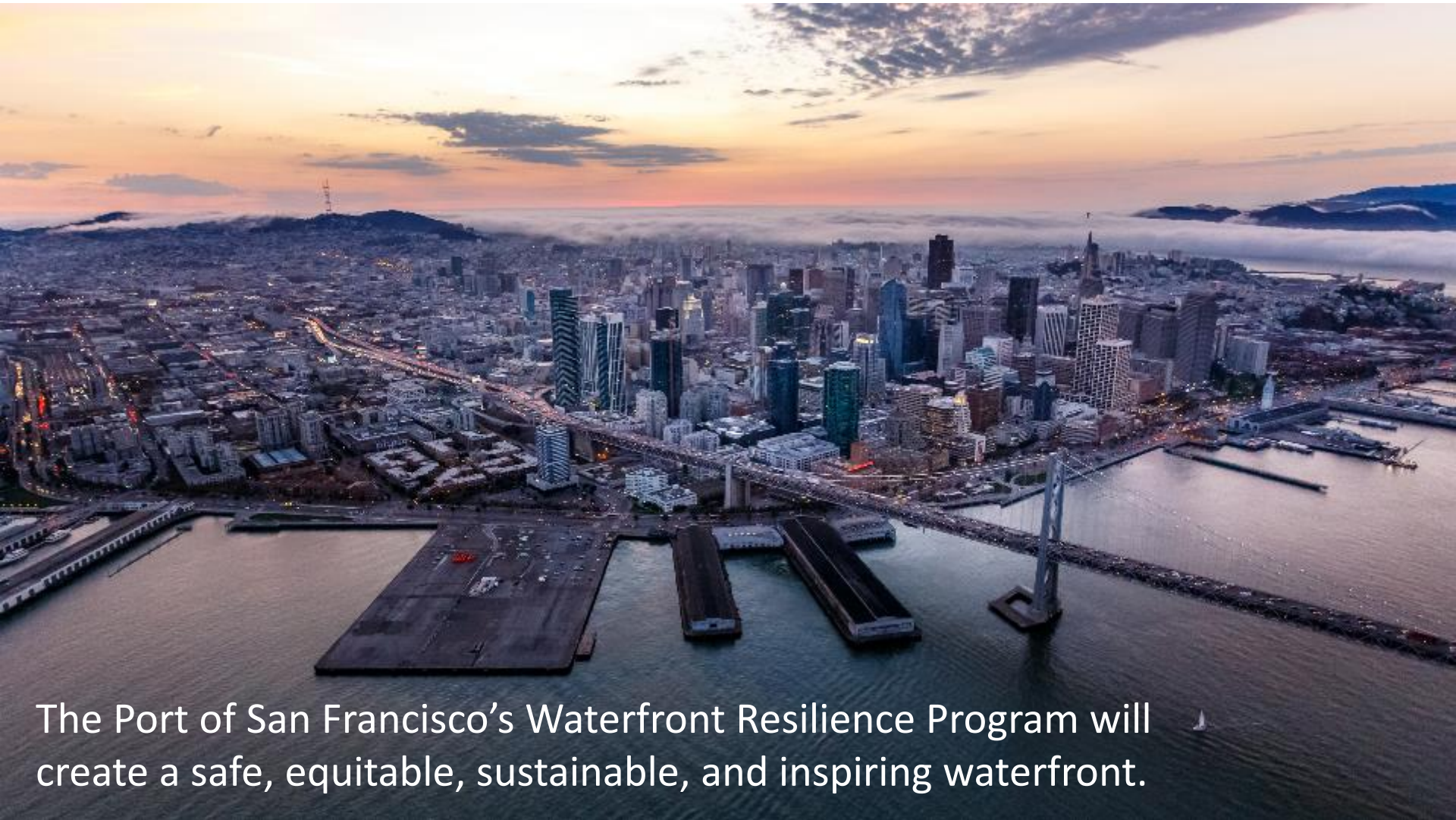
Broadening focus from the Embarcadero Seawall Program \$500 M Phase 1

USACE/Port Flood Study could be up to a \$1 billion effort

Aligns with efforts along Port's 7.5 miles & includes the southern waterfront



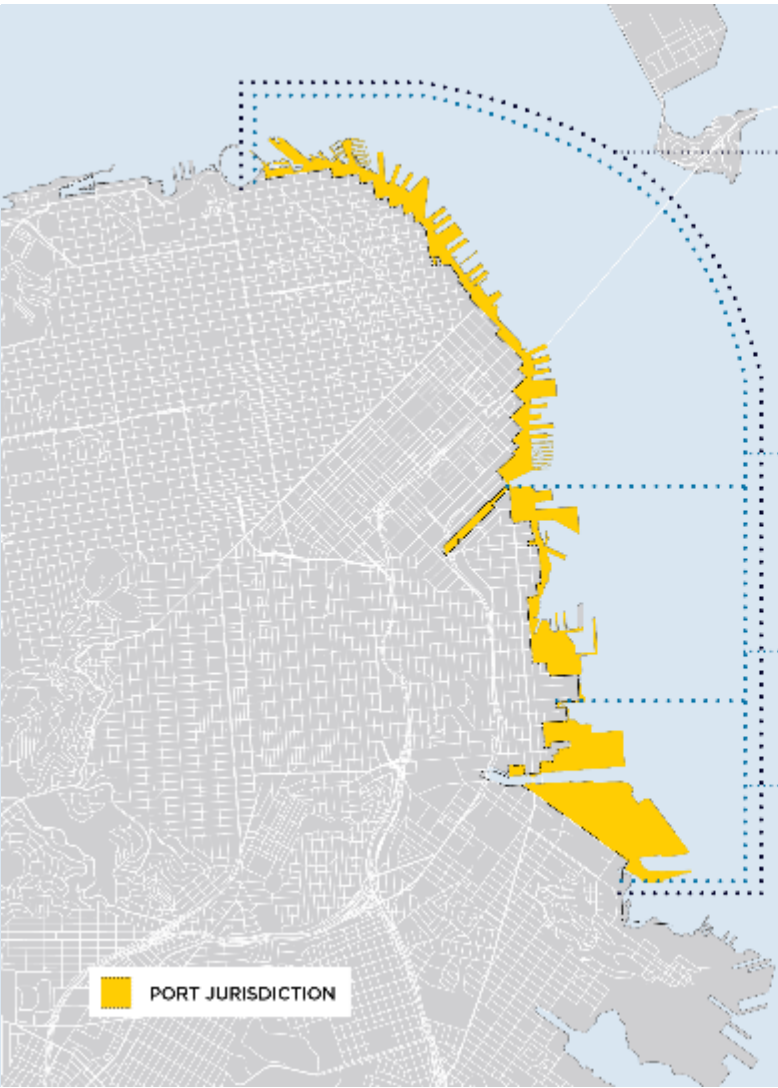
# PORT'S WATERFRONT RESILIENCE PROGRAM



The Port of San Francisco's Waterfront Resilience Program will create a safe, equitable, sustainable, and inspiring waterfront.



# PORT'S WATERFRONT RESILIENCE PROGRAM



## PORT WIDE

- Waterfront Resilience Program
- Flood Proof Piers
- Strengthen, Adapt, and Envision
- Flood Study
- Utilities Projects
- Project Adaptations
- Waterfront Plan

## EMBARCADERO

- Embarcadero Seawall Program
- Historic Pier Rehabilitation

## MISSION CREEK / MISSION BAY

- Southern Waterfront Seismic Vulnerability Assessment

## ISLAIS CREEK / BAYVIEW

- Islais Creek Adaptation Strategy
- Southern Waterfront Seismic Vulnerability Assessment

PORT JURISDICTION



# KEY WATERFRONT RESILIENCE PROGRAM SUCCESSES



## ALIGNING COMPLICATED PLANS

- Integrating the Embarcadero Seawall Program and the Flood Study efforts
- Developing the Waterfront Resilience Program framework
- Aligning with Port + City efforts
- Striving for innovation

## ASSESSING OUR VULNERABILITY

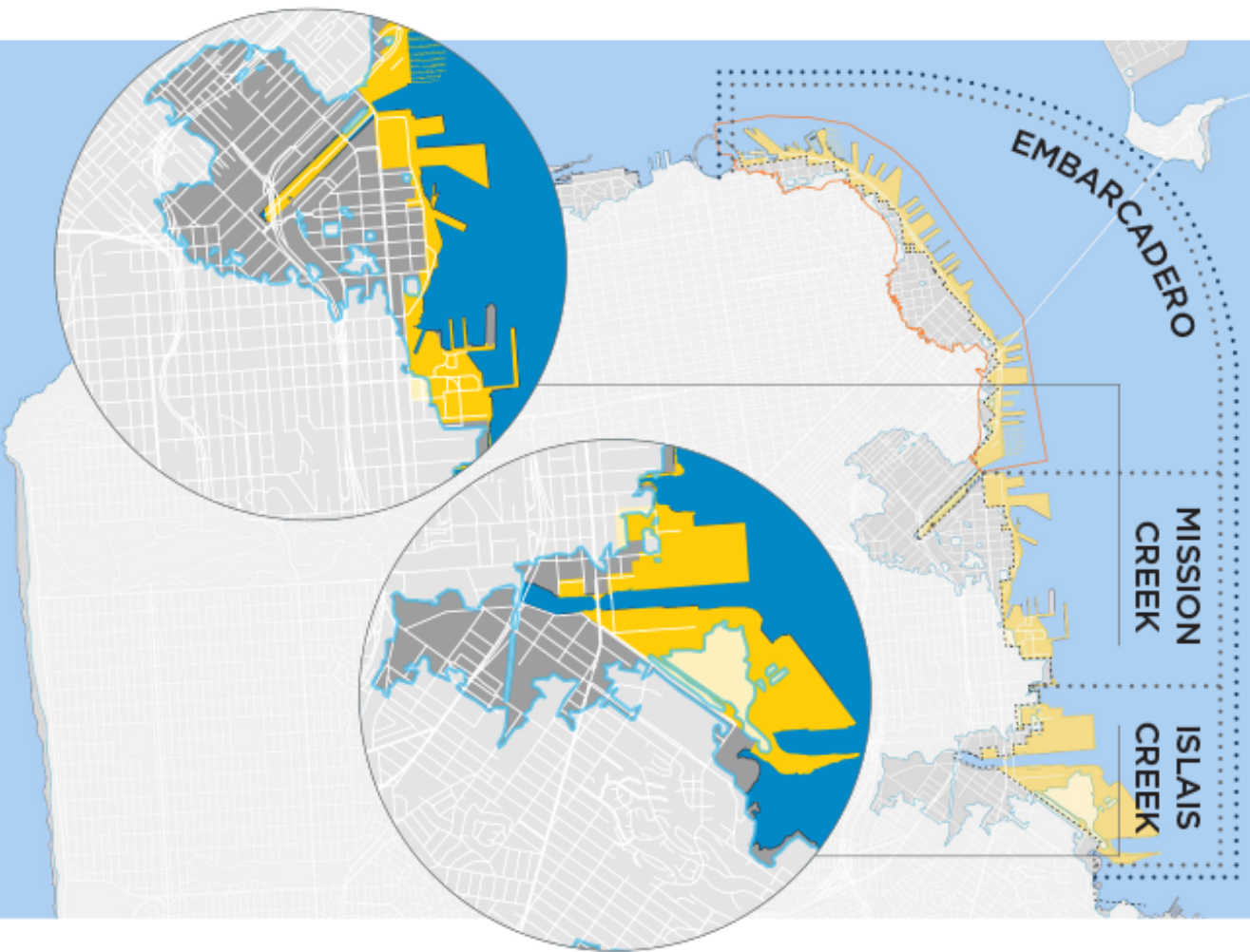
- Better understanding the earthquake risk in very different soil conditions
- Connecting with key partners to support assessment
- Identifying next steps for deeper understanding

## SOLVING THE FUNDING PUZZLE

- Pursuing unique opportunities to fund urgent seismic and sea level rise projects
- Identifying ways to conserve resources through collaboration
- Reallocating resources to stretch funding opportunities



# WATERFRONT RESILIENCE PROGRAM STUDY AREAS



## THREE STUDY AREAS

- Different risks and consequences
- Different assets and services
- Provides opportunity for focused engagement with adjacent communities and businesses
- Other areas outside of study area should be a focus of future studies



# WATERFRONT RESILIENCE PROGRAM ADAPTATION FRAMEWORK



**STRENGTHEN ELEMENT**

**Objective:** Immediately implement highest priority disaster response and life safety projects along the Embarcadero Seawall.



**ADAPT ELEMENT**

**Objective:** Reduce remaining seismic and increasing flood risks, respond to changing priorities, and provide a framework for the Port to adapt over time.



**ENVISION ELEMENT**

**Objective:** Develop visions that can respond to higher water levels, changes in priorities and science, a resulting in a waterfront that is resilient to 2100 and beyond.





# UPCOMING OPPORTUNITIES TO ENGAGE

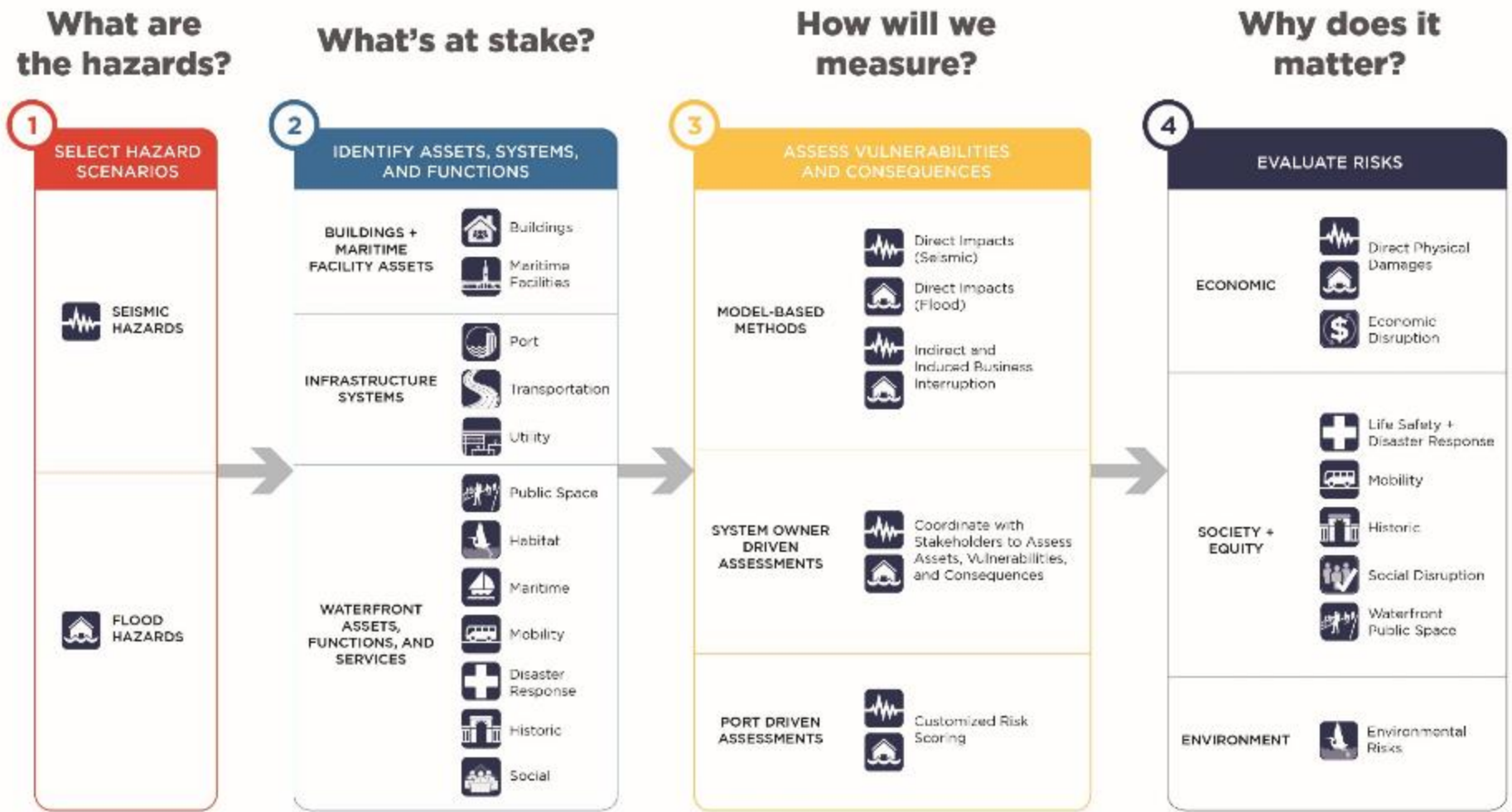


## OPPORTUNITIES TO ENGAGE

- Community meetings with engagement exercises
  - September 19 at 6:00pm – Southeast Facility Center
- Ongoing roadshows to keep stakeholders up-to-date
- Event outreach
  - Upcoming southeast waterfront events
- Digital engagement, including an interactive website and webinars
- Site tours (boat, bike, and walking) - new southern waterfront tours added
- And much more...



# EMBARCADERO SEAWALL PROGRAM – MHRA METHODOLOGY



# EMBARCADERO SEAWALL PROGRAM – MHRA NEXT STEPS

## MHRA NEXT STEPS

- Earthquake Ground Motions: using geotechnical exploration program data, generated site-specific earthquake ground motions for three earthquake scenarios recommending adding to this modeling
- Ferry Building Assessment: given its importance to the Port, City, and region consideration is being given to complete a highly advanced earthquake assessment for the area around the Ferry Building



# USACE/PORT FLOOD STUDY OVERVIEW



## HIGHLIGHTS

- Federal funding, expertise, partnership
- Port is the local sponsor, seeking assistance since 2012
- Flood Study is entire Port jurisdiction + Aquatic Park
- ~5 years, ~\$20M, 50/50 cost share

## STUDY OVERVIEW

- Evaluate flood risk to entire Port, develop and assess a wide range of alternatives
- Culminates in a recommendation to Congress of selected plan
- Design/construction of federal plan cost shared 65% fed / 35% local
- Locally preferred plan can be selected, sponsor pays extra cost



# USACE/PORT FLOOD STUDY OUTCOMES



## FLOOD STUDY OUTCOMES

- Understand flood risk
- Identify community priorities and consequences of flood risks and sea level rise
- Develop flood control solutions with the community
- Select a preferred plan
- Federal expertise + possible federal funding



# USACE/PORT FLOOD STUDY UPDATE

The USACE flood planning process uses the following milestones to advance the planning effort:

- 1. Alternatives Milestone > achieved in December 2018
- 2. Tentatively Selected Plan (TSP) Milestone > projected completion in September 2021
- 3. Agency Decision Milestone
- 4. Final Feasibility-Level Analysis and Feasibility Report, including CEQA/NEPA and an implementation plan



# USACE/PORT FLOOD STUDY COSTS

- Approximately \$20.3 million for a series of flood control projects that could be as high as \$1 billion across 7½ miles of Port waterfront
- Embarcadero Seawall Program budgeted \$23.7 million for preliminary engineering and environmental review for ¾ of a mile
- Many of the same tasks for both efforts means increased collaboration—and stretching resources
- The result of this budget increase – if approved by USACE and the Port Commission – will be an increase in federal funding for the Flood Study from \$1.5 million to \$9.75 million



# PROPOSED PEC CONTRACT AMENDMENT

## OVERVIEW

The proposed amendment will increase the contract amount by \$19,572,250, or 49%, with **29.96%** of the amended scope projected for Local Business Enterprises (LBE) subconsultants.

If approved by the Port Commission and the Board of Supervisors, the revised contract will have a total contract authorization not to exceed \$59,566,964.

## UPDATED CONTRACT SCOPE

- Flood Study In-Kind Services
- Adapt + Envision Planning
- Multi-Hazard Risk Assessment Completion
- Advance Earthquake Analysis, Ferry Building Area
- Communications and Stakeholder Engagement for Southern Waterfront
- LBE Support Services
- Workforce Development
- Project Management





# PROPOSED CONTRACT AMENDMENT: LBE SUPPORT SERVICES



## LBE SUPPORT SERVICES

- The specialization of the work in both planning and construction means creative methods are needed for LBE participation
- Two phases to increase LBE, including minority and women owned firm participation
- **Phase 1:** Assessment, goal setting, improving LBE contracting, communications strategy, trainings, and developing innovative contracting mechanisms
- **Phase 2:** Expanding technical assistance, establishing a resource hub, facilitating match-making, and aiding small businesses



# PROPOSED CONTRACT AMENDMENT: WORKFORCE DEVELOPMENT



## WORKFORCE DEVELOPMENT

- Sustainable program that maximizes resources and leverages partners' expertise
- Work with the Office of Economic and Workforce Development
- Leverage and expand the current Sector Academies
- Align Citybuild's 18-month program
- Strategy focused on educating, training, and placing residents in careers
- Recruitment and training timelines to mirror the Embarcadero Seawall Program Phase 1 projects; objective of trained workers before the project start dates



# PROPOSED LBE PARTICIPATION

## SUPPORTING LOCAL BUSINESSES

- CH2M committed to 21% LBE goal
- Proposed additional scope at 29.63% LBE
- Overall LBE participation rate estimated at 23%
- CH2M is actively looking for opportunities to increase LBE participation
- The proposed additional scope adds several new LBE subcontractors



# FUNDING STRATEGIES

## FUNDING

Through FY2018-19, the Port and City have appropriated \$20 million to the Seawall Program:

- City's Revolving Fund - \$9 million
- Port Capital - \$4 million
- SFMTA and Planning - \$2 million
- CA Natural Resources Agency - \$5 million

Future Funding Strategies:

- First Seawall Bond issuance of \$50 million
- USACE/Federal contribution
- Additional State funding



# THANK YOU!



Brad Benson  
*Waterfront Resilience Director*  
Port of San Francisco

[brad.benson@sfport.com](mailto:brad.benson@sfport.com)  
[sfport.com](http://sfport.com)

