

SECTION 00 21 14

QUESTION ON BID DOCUMENTS (QBD) FORM

Potential Bidders must complete this QBD Form and submit to the address below no later than 3 business days before the bid opening date.

Project: AMADOR STREET INFRASTRUCTURE IMPROVEMENTS

Contract No. 2852

To: Port of San Francisco
 Pier 1
 San Francisco, CA 94111
 Phone: (415) 274-0526
 Attention: **Noel Aquino**
 Email: constructionbids@sfport.com

City Use Only	
QBD No.	016
Received by:	Noel A.
Date Received:	7/24/24
Addendum Issued?	<input type="checkbox"/> Yes <input checked="" type="checkbox"/> No
Date Sent Response:	7/31/24

BIDDER'S QUESTION			
Company Name:	<u>Master Builders Solutions</u>	Date	<u>7/24/2024</u>
Contact Name:	<u>Richard Hill, P.E.</u>	Tel:	<u>662-420-9563</u>
Title:	<u>Senior Engineer</u>	Fax:	<u>na</u>
<i>Check One Only (Use separate form for each specification and drawing question.)</i>			
<input type="checkbox"/> Spec. Section:	_____	Paragraph(s):	_____
<input checked="" type="checkbox"/> Drawing Sheet:	<u>S-2</u>	Detail(s):	<u>Concrete Note 5</u>
<i>Question:</i>			
May any of the MasterLife 300 Series (300C, 300D, 300L) be used to replace the specified admixture (Xypex Admix C-500)? Documentation of equivalence and previous use of MasterLife 300 by the City follows.			

CITY'S REPLY	
<input type="checkbox"/>	Mark this box if the QBD can be answered by Bidder's review of the documents. Reply with location(s) where the information can be obtained.
<i>Reply:</i>	
300L is acceptable.	
By:	<u>Frank Piruzmand</u> Bureau/Firm: <u>DPW</u> Date: <u>7/24/24</u>

The reply is an answer to a Bidder's question. The reply does not change the Bid Documents unless the information contained therein is issued in an Addendum. At the sole discretion of the City, the question and reply may be returned to the questioner and distributed to all bidding general contractors for informational purposes.

SECTION 00 49 18

REQUEST FOR SUBSTITUTION

This form must be submitted no later than 10 calendar days prior to the date for opening bids. Refer to Section 00 21 13 (Instructions to Bidders – Substitutions) for instructions. If the successful Bidder wishes to propose an “or equal” or other substitutions after Bid Opening, said Bidder must make such request within 10 calendar days after the date of Award. Refer to Section 01 25 13 – Product Substitution Procedures for requirements for obtaining approval of substitutions. *Submit this completed form and necessary data substantiating a request for a substitution to Project Engineer/Architect.*

Contract No.: 2852 RFS No. _____
 Project Name: Amador Street Infrastructure Improvements
 Spec. Section: _____ Paragraph(s): _____
 Drawing Sheet: S-2 Detail(s): Concrete Note 5

Proposed Substitution: MasterLife 300 Series in place of Xypex Admix C-500
 Manufacturer: Master Builders Solutions Admixtures US, LLC
 Address/Phone: 23700 Chagrin Boulevard, Beachwood, OH 44122 / 662-420-9563
 Trade Name/Model No.: na
 On-Site Representative: Maria Navarro
 Address/Phone: 916-823-7538
 Installer: tbd
 Address/Phone: _____

Product History: New 2-5 years old 5-10 years old More than 10 years old

(a) Differences between proposed substitution and specified product (Attach required point by point comparative data):

No differences. Testing comparison follows.

(b) Reason for not providing specified item: Compatibility with other admixtures.

(c) Similar installation where proposed substitution has been used (Project/Address/Architect/Owner/Date Installed):

See following Project History.

(d) Proposed substitution affecting other parts of Work: No Yes: Explain _____

(e) Changes or modifications needed to coordinate other parts of the Work that will be necessary to accommodate the proposed substitution:

No changes needed.

(f) Savings to City for accepting substitution: Zero additional cost. (\$ _____)

(g) Proposed substitution changes Contract Time: No Yes:

If "Yes" Add Deduct _____ calendar days.

(h) Supporting data attached: Product Data Drawings Test Reports Samples
 Other: Project History

The undersigned certifies that:

1. The proposed substitution has been fully investigated and determined to be equal or superior in all respects to specified product.
2. The proposed substitution conforms in all respects to the requirements of the Contract Documents and is appropriate for the applications intended.
3. The same warranty will be furnished for proposed substitution as for specified product.
4. The proposed substitution will not affect or delay progress schedule.
5. The cost data as stated above is complete. There shall be no claims to the City for additional costs related to an accepted substitution.
6. The proposed substitution does not affect dimensions and functional clearances.
7. Coordination, installation, and changes in the Work as necessary for accepted substitution will be complete in all respects.

Submitted by: Richard D. Hill, P.E. Signature: Richard D. Hill
 Firm: Master Builders Solutions Date: 7/24/2024

Attachments _____

CITY'S REVIEW AND ACTION

- Substitution accepted - Make submittals in accordance with Division 1.
- Substitution accepted as noted - Make corrections and submit in accordance with Division 1.
- Substitution rejected - Use specified materials and equipment.
- Substitution Request received too late - Use specified materials.

Signed _____ Date _____

Note: The City's acceptance of Contractor's submittal of shop drawings, product data, or samples supporting this Substitution Request shall not constitute approval of submittals which do not conform to the requirements of the Contract Documents.

Additional Comments: _____

END OF SECTION

3	03 30 00	Cast-in-Place Concrete
	03 40 00	Precast Concrete
	31 00 00	Earthwork
7	07 16 16	Crystalline Waterproofing



MasterLife® 300D

Crystalline Capillary Waterproofing Admixture

MasterLife 300C

Concentrated Crystalline Capillary Waterproofing Admixture

Description

MasterLife 300D and MasterLife 300C concentrated version are integral crystalline capillary waterproofing admixtures for concrete. They are designed for use in above- and below-grade applications.

The MasterLife 300 series of admixtures meet ASTM C 494/C 494M requirements for Type S, Specific Performance, admixtures.

A red-pigmented version of MasterLife 300D admixture is also available.

Applications

Recommended for use in:

- Foundations
- Sewage and water treatment plants
- Water tanks and reservoirs
- Swimming pools
- Underground vaults
- Tunnel and subway systems
- Secondary containment structures
- Below-grade parking structures
- Precast components
- Water features
- Geotechnical grouting and ground improvement

Features

- Crystalline cementitious materials
- Integral addition
- Allow concrete to breathe

Benefits

- Reduce concrete permeability and, penetration of water and other liquids
- Seal hairline cracks
- Resist positive and negative side hydrostatic pressure
- Protect against sewage and industrial wastes

Performance Characteristics

Setting Time: The MasterLife 300 series of admixtures have little to no effect on concrete setting time within the recommended dosage ranges. However, time of setting testing is strongly recommended under project conditions when combinations of supplementary cementitious materials and/or admixtures are used, especially in cooler ambient conditions.

Permeability: The MasterLife 300 series of capillary waterproofing admixtures are portland cement-based crystalline cementitious materials that react in concrete to form non-soluble crystalline hydration products in the capillary pores of the concrete. These crystalline hydration products effectively reduce the permeability of concrete thus reducing capillary absorption and the penetration of water and other liquids.

Typical Data for MasterLife 300D admixture @ 2% by mass of cement (Independent Testing, except *)

Performance characteristic	Test method	Performance relative to untreated concrete mixture
Water Penetration	DIN 1048	100% reduction
Water Permeability	CRD-C 48	60% reduction
Capillary Absorption*	ASTM C 1585	43% reduction
Compressive Strength	ASTM C 39/C 39M	Nominal increase



Note: All the MasterLife 300 series of admixtures contain similar amounts of active ingredients at their recommended dosage ranges and, hence, provide similar performance characteristics.

Guidelines for Use

Concrete Quality: Crystalline capillary waterproofing admixtures such as the MasterLife 300 series of admixtures are categorized as Permeability-Reducing Admixtures (PRAs) in ACI 212.3R-16, Report on Chemical Admixtures for Concrete. These admixtures "are intended to be used in, and complement, well-proportioned concrete mixtures, not to compensate for poorly proportioned concrete mixtures. Although recommendations differ from each manufacturer, a w/cm of 0.45 or less is typical for concrete designed to resist water movement." In accordance with the recommendations provided in ACI 318, ACI 350 and ACI 212.3R, Master Builders Solutions recommends the use of the MasterLife 300 series of admixtures in good quality concrete with a maximum water-cementitious materials ratio of 0.45 and a minimum compressive strength of 4000 psi (28 MPa).

The MasterLife 300 series of admixtures meet the requirements for PRAs for concrete exposed to hydrostatic conditions (PRAH), as defined in ACI 212.3R-16.

Master Builders Solutions recommends adherence to the following guidelines provided in ACI 212.3R-16 when the MasterLife 300 series of admixtures are used:

"If the PRAH forms part of a primary waterproofing system, consider crack control measures (control joints), the admixture's crack sealing abilities, treatment of construction joints, and compatible repair systems. Also consider using concrete with the lowest drying shrinkage possible."

Dosage: For most applications, the recommended optimum dosage of MasterLife 300D admixture is 2% by mass of cement. The dosage of the red-pigmented version of MasterLife 300D admixture is 2.5% by mass of cement and the dosage of MasterLife 300C admixture is 1% by mass of cement. The minimum recommended dosages are 12 lb/yd³ (7.2 kg/m³) of concrete for MasterLife 300D admixture, 6 lb/yd³ (3.6 kg/m³) of concrete for MasterLife 300C admixture and 15 lb/yd³ (9.0 kg/m³) of concrete for red-pigmented version of MasterLife 300D admixture. Depending on the types of cementitious materials and the proportions of the project-specific concrete mixtures, dosages above or below the above values may be recommended for optimum performance. Consult your local sales representative for assistance in determining the appropriate dosage of the MasterLife 300 series of admixtures for your project.

Dispensing and Mixing: The MasterLife 300 series of admixtures are batched at the concrete production plant in a manner similar to that for cement or other cementitious materials. The admixtures may be batched in either a central or truck mixer. Follow the procedures outlined in ASTM C 94/C 94M, Standard Specification for Ready-Mixed Concrete, for general batching and mixing instructions for concrete. Provide at least 5 minutes of mixing after the addition of the MasterLife 300 series of admixtures to ensure thorough and uniform distribution of the admixture in the concrete mixture.

Product Notes

Corrosivity – Non-Chloride, Non-Corrosive: The MasterLife 300 series of admixtures will neither initiate nor promote corrosion of reinforcing or prestressing steel embedded in concrete or of galvanized steel floor and roof systems. Neither calcium chloride nor other chloride-based ingredients are used in the manufacture of the MasterLife 300 series of admixtures.

Compatibility: The MasterLife 300 series of admixtures can be used with portland cements approved under ASTM, AASHTO or CRD specifications. They are compatible with most concrete admixtures, including all Master Builders Solutions admixtures. The MasterLife 300 series of admixtures are recommended for use with high-range water-reducing admixtures, such as the MasterGlenium® series, for maximum workability while maintaining a low water-cementitious materials ratio.

Storage and Handling

The MasterLife 300 series of admixtures must be stored in a clean, dry area and must be protected from exposure to moisture. MasterLife 300D admixture must be maintained at a minimum temperature of 45 °F (7 °C). Preferably, MasterLife 300C admixture in water-soluble pods should be stored at ambient temperatures in the range of 40 °F to 105 °F (4 °C to 41 °C). If stored below 40 °F (4 °C), the water-soluble pods can become brittle and split open while handling. To alleviate this, it is recommended to warm the pails with the pods to temperatures above 40 °F (4 °C) before use. The MasterLife 300 series of admixtures have a shelf life of one year when stored under recommended conditions.

Packaging

MasterLife 300D admixture is available in 12 lb (5.5 kg) and 24 lb (11 kg) shreddable bags, and in 12 lb (5.5 kg) water-soluble pods. The red-pigmented version of MasterLife 300D admixture is available in 15 lb (7 kg) and 30 lb (14 kg) shreddable bags. MasterLife 300C admixture is available in 6 lb (2.7 kg) water-soluble pods.

Related Documents

Safety Data Sheets: MasterLife 300D admixture and MasterLife 300C admixture

Additional Information

For additional information on the MasterLife 300 series of admixtures or their use in developing concrete mixtures with special performance characteristics, contact your local sales representative.

Master Builders Solutions creates technologies for the construction industry inspiring people to build better. We are active in ~40 countries and operate 35 production sites with over 1,600 employees. We develop, produce, and market high-quality chemical admixtures, as well as adjacent core technologies, to master the challenges of today and support a decarbonized future. Our people are pivotal and pair leading technologies and a strong brand heritage to surpass our customers' expectations and drive continuous value creation.

Limited Warranty Notice

Master Builders Solutions Admixtures US, LLC ("Master Builders Solutions") warrants this product to be free from manufacturing defects and to meet the technical properties on the current Technical Data Guide, if used as directed within shelf life. Satisfactory results depend not only on quality products but also upon many factors beyond our control. MASTER BUILDERS SOLUTIONS MAKES NO OTHER WARRANTY OR GUARANTEE, EXPRESS OR IMPLIED, INCLUDING WARRANTIES OF MERCHANTABILITY OR FITNESS FOR A PARTICULAR PURPOSE WITH RESPECT TO ITS PRODUCTS. The sole and exclusive remedy of Purchaser for any claim concerning this product, including but not limited to, claims alleging breach of warranty, negligence, strict liability or otherwise, is shipment to purchaser of product equal to the amount of product that fails to meet this warranty or refund of the original purchase price of product that fails to meet this warranty, at the sole option of Master Builders Solutions. Any claims concerning this product must be received in writing within one (1) year from the date of shipment and any claims not presented within that period are waived by Purchaser. MASTER BUILDERS SOLUTIONS WILL NOT BE RESPONSIBLE FOR ANY SPECIAL, INCIDENTAL, CONSEQUENTIAL (INCLUDING LOST PROFITS) OR PUNITIVE DAMAGES OF ANY KIND.

Purchaser must determine the suitability of the products for the intended use and assumes all risks and liabilities in connection therewith. This information and all further technical advice are based on Master Builders Solutions' present knowledge and experience. However, Master Builders Solutions assumes no liability for providing such information and advice including the extent to which such information and advice may relate to existing third party intellectual property rights, especially patent rights, nor shall any legal relationship be created by or arise from the provision of such information and advice. Master Builders Solutions reserves the right to make any changes according to technological progress or further developments. The Purchaser of the Product(s) must test the product(s) for suitability for the intended application and purpose before proceeding with a full application of the product(s). Performance of the product described herein should be verified by testing and carried out by qualified experts.



© Master Builders Solutions ■ 07/23 ■ DAT-0518

® registered trademark of Master Builders Solutions in many countries of the world

www.master-builders-solutions.com/en-us

Master Builders Solutions Admixtures US, LLC

23700 Chagrin Boulevard
Beachwood, Ohio, 44122-5544
USA ■ 800-628-9990

Master Builders Solutions Canada, Inc.

1800 Clark Boulevard
Brampton, Ontario L6T 4M7
CANADA ■ 289-360-1300

03 30 00	Cast-in-Place Concrete
03 40 00	Precast Concrete
03 70 00	Mass Concrete
31 00 00	Earthwork

MasterLife[®] 300L

Liquid Crystalline Capillary Waterproofing Admixture

Description

MasterLife 300L is a liquid crystalline capillary waterproofing admixture for concrete. It is designed for use in above- and below-grade applications. MasterLife 300L admixture will meet ASTM C494/C494M requirements for Type S, Specific Performance, admixtures.

Applications

Recommended for use in:

- Foundations
- Sewage and water treatment plants
- Water tanks and reservoirs
- Swimming pools
- Underground vaults
- Tunnels and subway systems
- Secondary containment structures
- Below-grade parking structures
- Precast components
- Water features
- Geotechnical grouting and ground improvement
- Tinted concrete elements

Features

- Unique liquid crystalline formulation
- Automated dispenser / integral addition

Benefits

- Reduces concrete permeability
- Reduces penetration of water and other liquids
- Resists positive and negative side hydrostatic pressure
- Protects against sewage and industrial waste
- Seals hairline cracks
- Allows concrete to breathe
- Accurate dosing and addition verification with batch ticket printout
- Enhanced safety during batching
- No packaging waste or disposal cost

Performance Characteristics

The MasterLife 300L admixture is a permeability-reducing admixtures (PRAHs) as described in the American Concrete Institute's ACI 212 document Report on Chemical Admixtures for concrete. This product has been evaluated using industry recognized tests for waterproofing characteristics such as water penetration and water permeability under pressure and capillary absorption. Data from third-party, independent testing is available upon request.

Hardened Properties: The MasterLife 300L crystalline capillary waterproofing admixture reacts in concrete to form non-soluble crystalline hydration products in the capillary pores of the concrete. These crystalline hydration products effectively reduce the permeability of concrete thus reducing capillary absorption and the penetration of water and other liquids.

Guidelines for Use

Concrete Quality: Crystalline capillary waterproofing admixtures such as the MasterLife 300 series of admixtures are categorized as Permeability-Reducing Admixtures (PRAs) in ACI 212.3R-16, Report on Chemical Admixtures for Concrete. These admixtures "are intended to be used in, and complement, well-proportioned concrete mixtures, not to compensate for poorly proportioned concrete mixtures. Although recommendations differ from each manufacturer, a w/cm of 0.45 or less is typical for concrete designed to resist water movement." In accordance with the recommendations provided in ACI 318, ACI 350 and ACI 212.3R, Master Builders Solutions recommends the use of the MasterLife 300 series of admixtures in good quality concrete with a maximum water-cementitious materials ratio of 0.45 and a minimum compressive strength of 4000 psi (28 MPa). The MasterLife 300 series of admixtures meet the requirements for PRAs for concrete exposed to hydrostatic conditions (PRAH), as defined in ACI 212.3R-16. Master Builders Solutions recommends adherence to the following guidelines provided in ACI 212.3R-16 when the MasterLife 300 series of admixtures are used: "If the PRAH forms part of a primary waterproofing system, consider crack control measures (control joints), the admixture's crack sealing abilities, treatment of construction joints, and compatible repair systems. Also consider using concrete with the lowest drying shrinkage possible."

Dosage: MasterLife 300L admixture is recommended for use at a dosage of 1.25 gal/yd³ (6.2 L/m³).

Dispensing and Mixing: Mixture Proportions: The mix water content should be reduced by 1.25 gal/yd³ [6.2 L/m³] to account for the quantity of MasterLife 300L admixture used. MasterLife 300L admixture may be added to the concrete mixture during the initial batch sequence at the production plant or at the jobsite. If the delayed addition method is used, mixing at high speed for 3–5 minutes after the addition of MasterLife 300L admixture will result in mixture uniformity.

Product Notes

Corrosivity - Non-Chloride, Non-Corrosive: MasterLife 300L admixture will neither initiate nor promote corrosion of reinforcing steel, prestressing steel or of galvanized steel floor and roof systems. Neither calcium chloride nor other chloride-based ingredients are used in the manufacture of MasterLife 300L admixture.

Compatibility - Admixtures: MasterLife 300L admixture is compatible with most admixtures used in the production of quality concrete, including normal, mid-range and high-range water-reducers, retarders, accelerators and corrosion inhibitors. For air-entrained concrete applications, MasterLife 300L admixture is recommended for use with high-range water-reducing admixtures, such as the MasterGlenium® series, for maximum workability while maintaining a low water-cementitious materials ratio. MasterLife 300L admixture can also be used with MasterAir® AE 200, MasterAir AE VR10 and MasterAir AE 90 air-entraining admixtures. The dosage of air-entraining admixture should be established through truck trial.

Compatibility - Cementitious Materials: MasterLife 300L admixture can be used with portland cements approved under ASTM, AASHTO or CRD specifications and supplementary cementitious materials used in concretes. Trial mixes with MasterLife 300L admixture are required before project start to ensure compatibility and desired results, especially due to potential variations in material response. Different sources of cementitious materials and variations between material batches may affect setting time, slump, or other performance attributes including compressive strength. Consult your local sales representative for recommended concrete mixture adjustments if necessary.

Tinted Concrete: MasterLife 300L admixture can be used in combination with a coloring admixture, such as MasterColor Medium Red liquid admixture, to produce tinted concrete.

Packaging

MasterLife 300L admixture is available in 265 gal (1003 L) totes and by bulk delivery.

Storage and Handling

Storage Temperature: MasterLife 300L admixture should be stored at ambient temperatures above 40 °F (5 °C), and precautions should be taken to protect the admixture from freezing. If MasterLife 300L admixture freezes, thaw and reconstitute by mild mechanical agitation. Do not use pressurized air for agitation.

Shelf Life

MasterLife 300L admixture has a minimum shelf life of 12 months when stored under recommended conditions. Depending on storage conditions, the shelf life may be greater than stated. Please contact your local sales representative regarding suitability for use if the shelf life of MasterLife 300L admixture has been exceeded.

Related Documents

Safety Data Sheet: MasterLife 300L admixture

Additional Information

For additional information on MasterLife 300L admixture, or its use in developing a concrete mixture with special performance characteristics, contact your local sales representative.

Master Builders Solutions creates technologies for the construction industry inspiring people to build better. We are active in ~40 countries and operate 35 production sites with over 1,600 employees. We develop, produce, and market high-quality chemical admixtures, as well as adjacent core technologies, to master the challenges of today and support a decarbonized future. Our people are pivotal and pair leading technologies and a strong brand heritage to surpass our customers' expectations and drive continuous value creation.

Limited Warranty Notice

Master Builders Solutions warrants this product to be free from manufacturing defects and to meet the technical properties on the current Technical Data Guide, if used as directed within shelf life. Satisfactory results depend not only on quality products but also upon many factors beyond our control. MASTER BUILDERS SOLUTIONS MAKES NO OTHER WARRANTY OR GUARANTEE, EXPRESS OR IMPLIED, INCLUDING WARRANTIES OF MERCHANTABILITY OR FITNESS FOR A PARTICULAR PURPOSE WITH RESPECT TO ITS PRODUCTS. The sole and exclusive remedy of Purchaser for any claim concerning this product, including but not limited to, claims alleging breach of warranty, negligence, strict liability or otherwise, is shipment to purchaser of product equal to the amount of product that fails to meet this warranty or refund of the original purchase price of product that fails to meet this warranty, at the sole option of Master Builders Solutions. Any claims concerning this product must be received in writing within one (1) year from the date of shipment and any claims not presented within that period are waived by Purchaser. MASTER BUILDERS SOLUTIONS WILL NOT BE RESPONSIBLE FOR ANY SPECIAL, INCIDENTAL, CONSEQUENTIAL (INCLUDING LOST PROFITS) OR PUNITIVE DAMAGES OF ANY KIND.

Purchaser must determine the suitability of the products for the intended use and assumes all risks and liabilities in connection therewith. This information and all further technical advice are based on Master Builders Solutions' present knowledge and experience. However, Master Builders Solutions assumes no liability for providing such information and advice including the extent to which such information and advice may relate to existing third party intellectual property rights, especially patent rights, nor shall any legal relationship be created by or arise from the provision of such information and advice. Master Builders Solutions reserves the right to make any changes according to technological progress or further developments. The Purchaser of the Product(s) must test the product(s) for suitability for the intended application and purpose before proceeding with a full application of the product(s). Performance of the product described herein should be verified by testing and carried out by qualified experts.



© Master Builders Solutions ■ 07/23 ■ DAT-1325

® registered trademark of Master Builders Solutions in many countries of the world

www.master-builders-solutions.com/en-us

Master Builders Solutions Admixtures US, LLC
23700 Chagrin Boulevard
Beachwood, Ohio, 44122-5544
USA ■ 800-628-9990

Master Builders Solutions Canada, Inc.
1800 Clark Boulevard
Brampton, Ontario L6T 4M7
CANADA ■ 289-360-1300

Admixture Information (AI 6): MasterLife[®] 300C and Xypex Admix C-500 NF Admixtures

Performance Criteria: Compressive Strength • Water Permeability (Pressure Testing) • Water Penetration (Pressure Testing)

- 600 lb/yd³ [356 kg/m³] cement content, 0.42 w/cm
- Treatments: Untreated, MasterLife 300C admixture @ 1% by mass of cement, Xypex Admix C-500 NF admixture @ 1% by mass of cement
- Target Compressive Strength: 6,000 psi [41.4 MPa]
- Target Slump: 6 – 7 in. [150 – 180 mm]
- Non-air-entrained

Mix I.D.	Reference	MasterLife 300C	Xypex Admix C-500 NF
Dosage (% by mass of cement)		1%	1%
Compressive Strength, psi [MPa]			
28-Day	7,310 [50.4]	7,420 [51.2]	7,690 [53.0]
CRD-C48-92 - Water Permeability (Flow), % Reduction Compared to Reference		87%	89%
DIN 1048 - Water Penetration Depth, % Reduction Compared to Reference Concrete		54%	58%

Data Summary:

1. All three concrete mixtures achieved the target compressive strength of 6,000 psi [41.4 MPa] at 28 days.
2. In identical concrete mixtures, MasterLife 300C and Xypex Admix C-500 NF admixtures provided similar reductions in water permeability and water penetration relative to the reference concrete mixture.

Independent Third-Party Testing
 Nelson Testing Laboratory
 NTL Project # 20-1115
 August 31, 2020

March 20, 2014

Project BL-13-01371

Mr. Prakash Surali
BASF Corporation
23700 Chagrin Blvd.
Cleveland, OH 44122

Re: MasterLife 300D
Permeability Testing – CRD C48

Dear Mr. Surali:

This letter summarizes the recent testing completed in our Bloomington Laboratory for MasterLife 300D.

Purpose

The purpose of this testing was to measure the performance of MasterLife 300D in concrete. This testing included permeability and compressive strength, comparing these results with a control mixture and a mixture containing Xypex Admix C-500.

Methodology

The sample of MasterLife 300D was received in our laboratory on July 12, 2013 from BASF Corporation. The sample of Xypex Admix C-500 was acquired by Braun Intertec on March 21, 2013. Batching of concrete was conducted on July 15, 2013. The applicable test methods used in this testing are presented below:

- ASTM C192, "Standard Practice for Making and Curing Concrete Test Specimens in the Laboratory."
- ASTM C138, "Standard Test Method for Density, Yield and Air Content of Concrete."
- ASTM C143, "Standard Test Method for Slump of Hydraulic-Cement Concrete."
- ASTM C1064, "Standard Test Method for Temperature of Freshly Mixed Hydraulic Cement Concrete."
- ASTM C231, "Standard Test Method for Air Content of Freshly Mixed Concrete by Pressure Method."
- CRD C48 "Standard Test Method for Water Permeability of Concrete"

Immediately after casting, all samples were maintained in a moist cure environment at $73.5^{\circ}\text{F} \pm 3.5^{\circ}\text{F}$ until the required age of testing. Permeability samples were removed from moist curing at 28 day of age and conditioned in accordance with ASTM C1585, "Standard Test Method for Measurement of Rate of Absorption of Water by Hydraulic Cement Concretes," Section 8 - Sample Conditioning. The samples were 77 day old when placed in the chambers to commence permeability testing.

Results

Batch weights and test results are presented in Table 1 below:

Table 1 Batch Weights, Plastic Concrete Results and Permeability

Material \ Mixture	Control	Xypex Admix C-500	MasterLife 300D
Cement – Holcim Ste. Genevieve (lb)	600	600	600
Water (lb)	240	240	240
Faulkstone Limestone (lb)	1700	1700	1700
Empire Township Sand (lb)	1568	1568	1568
MasterGlenium 7500 (oz/cwt)	6	8	11
Xypex Admix C-500 (lb)	N/A	12	N/A
MasterLife 300D (lb)	N/A	N/A	12
Plastic Results			
Slump (inches)	5.5	6	5
Air Content (%)	5.0	5.4	5.2
Unit Weight (lb/cft)	149.5	149.2	149.4
Concrete Temperature (°F)	73	73	73
Permeability – CRD C48, 200psi of head pressure (m/s)			
Sample A	1.48×10^{-10}	5.91×10^{-11}	5.42×10^{-11}
Sample B	1.12×10^{-10}	6.05×10^{-11}	5.09×10^{-11}
Average Permeability	1.30×10^{-10}	5.98×10^{-11}	5.24×10^{-11}

General Remarks

In performing its services, Braun Intertec used that degree of care and skill ordinarily exercised under similar circumstances by reputable members of its profession currently practicing in the same locality. No warranty, express or implied, is made.

If you have any questions or concerns, please do not hesitate to contact Alfred Gardiner at 612.685.5125.

Sincerely,

BRAUN INTERTEC CORPORATION



Alfred J. Gardiner, PE, LEED AP
Principal - Manager Concrete Consulting

Confidential

March 21, 2014

Project BL-13-01371

Mr. Prakash Surali
BASF Corporation
23700 Chagrin Blvd.
Cleveland, OH 44122

Re: MasterLife 300D
Permeability Testing – DIN 1048

Dear Mr. Surali:

This letter summarizes the recent testing completed in our Bloomington Laboratory for MasterLife 300D.

Purpose

The purpose of this testing was to measure the performance of MasterLife 300D in concrete. This testing included permeability and compressive strength, comparing these results with a control mixture and a mixture containing Xypex Admix C-500.

Methodology

The sample of MasterLife 300D was received in our laboratory on March 20, 2013 from BASF Corporation. The sample of Xypex Admix C-500 was acquired by Braun Intertec on March 21, 2013. Batching of concrete was conducted on April 24, 2013. The applicable test methods used on this testing are presented below:

- ASTM C192, "Standard Practice for Making and Curing Concrete Test Specimens in the Laboratory."
- ASTM C138, "Standard Test Method for Density, Yield and Air Content of Concrete."
- ASTM C143, "Standard Test Method for Slump of Hydraulic-Cement Concrete."
- ASTM C1064, "Standard Test Method for Temperature of Freshly Mixed Hydraulic Cement Concrete."
- ASTM C231, "Standard Test Method for Air Content of Freshly Mixed Concrete by Pressure Method."
- ASTM C39, "Standard Test Method for Compressive Strength of Cylindrical Concrete Specimens."
- DIN 1048 Part 5, "Testing Concrete, Testing of hardened concrete, Section 7.6 – Water Permeability." This test was modified to maintain exposure for 96 hours.

Immediately after casting, all samples were maintained in a moist cure environment at $73.5^{\circ}\text{F} \pm 3.5^{\circ}\text{F}$ until the required age of testing. Permeability samples were removed from moist curing at 28 day of age and conditioned in accordance with ASTM C1585, "Standard Test Method for Measurement of Rate of Absorption of Water by Hydraulic Cement Concretes," Section 8 - Sample Conditioning.

Results

Batch weights and test results are presented in Table 1 below:

Table 1 Batch Weights, Plastic Concrete Results, Compressive Strength and Permeability

Material \ Mixture	Control	Xypex Admix C-500	MasterLife 300D
Cement – Holcim Ste. Genevieve (lb)	600	600	600
Water (lb)	240	240	240
Faulkstone Limestone (lb)	1700	1700	1700
Empire Township Sand (lb)	1568	1568	1568
MasterGlenium 7500 (oz/cwt)	6	8	11
Xypex Admix C-500 (lb)	N/A	12	N/A
MasterLife 300D (lb)	N/A	N/A	12
Plastic Results			
Slump (inches)	4	6	4.5
Air Content (%)	5.7	5.9	5.8
Unit Weight (lb/cft)	148.3	148.2	148.6
Concrete Temperature (°F)	70	70	69
Compressive Strength – ASTM C39 (psi)			
7 days	7260	6240	7660
7 days	7070	6510	7470
Average 7 days	7170	6380	7570
28 days	8670	7520	8380
28 days	8350	7450	8460
28 days	8380	7810	8620
Average 28 days	8470	7590	8490
Permeability – DIN 1048, Part 5, Section 7.7 – Depth of Water Penetration after 96 hours (mm)			
Sample A	6.8	4.1	0.0
Sample B	6.1	0.0	0.0
Sample C	5.9	1.0	0.0
Average Water Penetration	6.3	1.7	0.0

General Remarks

In performing its services, Braun Intertec used that degree of care and skill ordinarily exercised under similar circumstances by reputable members of its profession currently practicing in the same locality. No warranty, express or implied, is made.

If you have any questions or concerns, please do not hesitate to contact Alfred Gardiner at 612.685.5125.

Sincerely,

BRAUN INTERTEC CORPORATION



Alfred J. Gardiner, PE, LEED AP
Principal - Manager Concrete Consulting

Confidential

July 24, 2024

Port of San Francisco
Pier 1, The Embarcadero
San Francisco, CA 94111

Attention: Noel Aquino
Project: Amador Street Infrastructure Improvements
Project location: San Francisco, California

Certificate of Conformance
MasterLife[®] 300C
Master Builders Solutions Concentrated Integral Crystalline Capillary Waterproofing Admixture
for Concrete

TO WHOM IT MAY CONCERN:

I, Richard Hubbard, Sr. Technical Marketing Specialist for Master Builders Solutions, Cleveland, Ohio, certify:

That, MasterLife 300C admixture is a concentrated integral crystalline capillary waterproofing admixture for concrete; and

That, MasterLife 300C admixture is a concentrated version of MasterLife 300D integral crystalline capillary waterproofing admixture for concrete; and

That, MasterLife 300C admixture at a dosage of 1 percent by mass of cement provides the same active ingredients as 2 percent by mass of cement of MasterLife 300D admixture; and

That, neither calcium chloride nor any chloride-based ingredient is used in the manufacture of MasterLife 300C admixture; and

That, MasterLife 300C admixture is certified by NSF in accordance with NSF/ANSI/CAN 61-Drinking Water System Components-Health Effects, and that it is therefore suitable for use in properly cured concrete structures in contact with potable water; and

That, MasterLife 300C admixture meets the requirements for a Type S, Specific Performance Admixture specified in ASTM C494/C494M and AASHTO M194, Standard Specification for Chemical Admixtures for Concrete.



Richard Hubbard
Sr. Technical Specialist

July 24, 2024

Port of San Francisco
Pier 1, The Embarcadero
San Francisco, CA 94111

Attention: Noel Aquino
Project: Amador Street Infrastructure Improvements
Project location: San Francisco, California

Certificate of Conformance
MasterLife[®] 300D
Integral Crystalline Capillary Waterproofing Admixture for Concrete

I, Richard Hubbard, Sr. Technical Marketing Specialist for Master Builders Solutions US LLC, Cleveland, Ohio, certify:

That MasterLife 300D admixture is an integral crystalline capillary waterproofing admixture for concrete; and

That MasterLife 300D admixture and Rheomac 300D admixture are the same product having identical composition, differing only in designation; and

That MasterLife 300D admixture is also available in a red-pigmented version; and

That neither calcium chloride nor any chloride-based ingredient is used in the manufacture of MasterLife 300D admixture; and

That MasterLife 300D admixture is certified by NSF to NSF/ANSI Standard 61-Drinking Water System Components-Health Effects, and that it is therefore suitable for use in properly cured concrete structures in contact with potable water; and

That MasterLife 300D admixture meets the requirements for a Type S, Specific Performance Admixture specified in ASTM C494/C494M and AASHTO M194, the Standard Specifications for Chemical Admixtures for Concrete.



Richard Hubbard
Sr. Technical Specialist

July 24, 2024

Port of San Francisco
Pier 1, The Embarcadero
San Francisco, CA 94111

Attention: Noel Aquino
Project: Amador Street Infrastructure Improvements
Project location: San Francisco, California

Certificate of Conformance
MasterLife[®] 300L
Master Builders Solutions Admixture for Concrete

TO WHOM IT MAY CONCERN:

I, Mark E. Piechuta, Cleveland, Ohio certify:

That, MasterLife 300L admixture is an integral liquid crystalline capillary waterproofing admixture for concrete; and

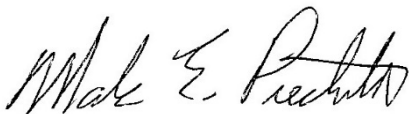
That, MasterLife 300L admixture and PS-1730 admixture are the same product having identical composition, differing only in designation; and

That, neither calcium chloride nor any chloride-based ingredient is used in the manufacture of MasterLife 300L admixture; and

That, MasterLife 300L admixture, based on the chlorides originating from all the ingredients used in its manufacture, contributes less than 0.00014 percent (1.4 ppm) chloride ions by weight of the cement when used at the rate of 65 mL per 100 kg (1 fluid ounce per 100 pounds) of cement; and

That MasterLife 300L admixture is NSF Certified in accordance with NSF/ANSI/CAN Std. 61, Drinking Water System Components-Health Effects and that it is, therefore suitable for use in properly cured concrete structures in contact with potable water; and

That, MasterLife 300L admixture meets the requirements for a Type S, Specific Performance Admixture as specified in ASTM C494/C494M and AASHTO M194, Standard Specification for Chemical Admixtures for Concrete.



Mark Piechuta
Sr. Technical Specialist

Project Spotlight

Castlen Fertilizer Storage Facility

Featured Product

MasterLife 300L

Project Key Points

- Time and labor savings not having to handle the product multiple times
- Enhanced production safety with not having to manually add the product to the trucks
- Product addition transparency with a batch ticket printout
- No effect on slump, air content, setting time, workability, or finishability - easy to place

Project Data

Location

Owensboro, KY

Contractor

NBR Concrete Construction

Concrete Producer

IMI Concrete

Concrete Volume

1,500 yd³ (1,150 m³)



Project Spotlight

Rocky Mountain Labs

Featured Product

MasterLife 300L

Project Key Points

- Concrete waterproofing desired in the slab application
- Concrete was easy to pump, place, and finish

Project Data

Location
Hamilton, MT

Contractor
Jackson Contractors

Concrete Producer
Donaldson Bros Ready Mix

Concrete Volume
2,700 yd³ (2,060 m³)



Project Spotlight

Utility Precast Elements

Featured Products

MasterLife 300L

MasterColor

Project Key Points

- High quality precast concrete
- Liquid integral crystalline waterproofing treatment of elements
- Faster, more precise and accurate batching process compared to powder products
- Visual recording on batch reports ensures engineers and project owners that products are properly protected

Project Data

Location
Holden, LA

Concrete Producer
Gainey's Concrete Products Inc.



Project Spotlight

Garage Floor

Featured Product

MasterLife 300L

Project Key Points

- The mixture contained MasterLife CRA 007 and MasterFiber MAC 360 FF additives for crack control
- The concrete screeded nicely and finished really well; it sealed up with one pass of the float

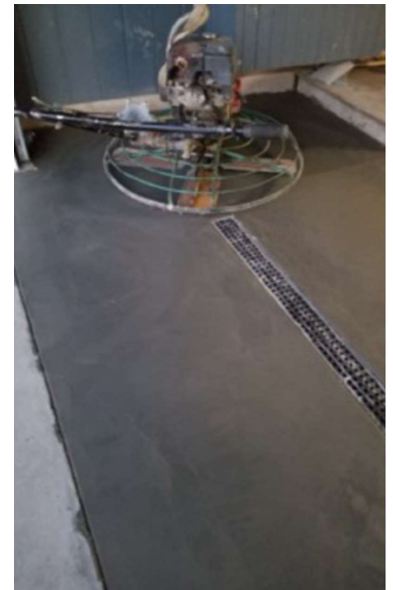
Project Data

Location
Spokane, WA

Contractor
Todd Ferger

Concrete Producer
CDA Redi Mix and Precast Inc.

Concrete Volume
10 yd³ (8 m³)





Project Spotlight

MasterLife[®] 300D

Crystalline Capillary Waterproofing Admixture

Project

Chambersburg Wastewater
Treatment Plant Upgrades

Location

Chambersburg, PA

Owner

Borough of Chambersburg

Design Engineer

AECOM

Contractor

Michael F Ronca & Sons, Inc.

Concrete Producer

Valley Quarries, Inc.

Volume

8,600 yd³ (6,575 m³)

Application

New Tanks

**Master Builders Solutions
Admixtures US, LLC**

23700 Chagrin Boulevard
Cleveland, Ohio 44122-5544
800-628-9990

**Master Builders Solutions
Canada, Inc.**

1800 Clark Boulevard
Brampton, Ontario L6T 4M7
800-387-5862

Follow us at:     

© registered trademark of a MBCC Group member in many countries of the world
© 2021 MBCC Group rev 4/21 OTH-PSL-1167, Lit #: AD3000256

A brand of
MBCC GROUP



Project Spotlight

MasterLife[®] 300D

Crystalline Capillary Waterproofing Admixture

Project

Everglades Agricultural Area
A-1 Flow Equalization Basin

Location

West Palm Beach, FL

Owner

South Florida Water
Management District

Design Engineer

WRS Compass

Contractor

Central Florida Equipment

Concrete Producer

Central Florida Equipment

Volume

14,000 yd³ (10,700 m³)

Application

Water Inflow/
Outflow Structures

**Master Builders Solutions
Admixtures US, LLC**

23700 Chagrin Boulevard
Cleveland, Ohio 44122-5544
800-628-9990

**Master Builders Solutions
Canada, Inc.**

1800 Clark Boulevard
Brampton, Ontario L6T 4M7
800-387-5862

Follow us at:     

© registered trademark of a MBCC Group member in many countries of the world
© 2021 MBCC Group rev 4/21 OTH-PSL-1025, Lit #: AD3000214

A brand of
MBCC GROUP



Project Spotlight

MasterLife[®] 300D

Crystalline Capillary Waterproofing Admixture

Project

Oakland Macomb
Interceptor Drain

Location

Oakland and
Macomb Counties, MI

Owner

OMID Drainage Board

Design Engineer

NTH Consultants

Contractor

Colisanti Construction
Jay Dee Contractors

Concrete Producer

McCoig Industries
Superior Materials, Inc.

Volume

8,000 yd³ (6,100 m³)

Application

Drain, Tunnel

**Master Builders Solutions
Admixtures US, LLC**

23700 Chagrin Boulevard
Cleveland, Ohio 44122-5544
800-628-9990

**Master Builders Solutions
Canada, Inc.**

1800 Clark Boulevard
Brampton, Ontario L6T 4M7
800-387-5862

Follow us at:     

© registered trademark of a MBCC Group member in many countries of the world
© 2021 MBCC Group rev 4/21 OTH-PSL-1164, Lit #: AD3000242

A brand of
MBCC GROUP



Project Profile

Integral Waterproofing Ketch Lake Dam



Project:

Ketch Lake Dam

Location:

Fort Sill, OK

Owner:

Army Corps of Engineers

Engineer:

Army Corps of Engineers

Contractor:

M.L. Young Construction

Concrete Producer:

Lawton Transit Mix

Products:

MasterLife[®] 300D
integral waterproofing admixture

MasterSet[®] DELVO
hydration-controlling admixture

MasterPolyheed[®] 1020
mid-range water-reducing admixture

Market Sector:

Ready-mixed concrete

Ketch Lake Dam, built by the landowner Frank Ketch in the 1930's, was built of cobblestone and was a stock pond for cattle. Subsequently, it became a recreational pond. When the dam started giving way in 2010, the Army Corps of Engineers decided to build a new dam directly behind the existing dam. The new dam is 36 feet (11 m) high, 140 feet (43 m) wide and 6 feet (1.8 m) thick at the top and 80 feet (24 m) wide and 20 feet (6 m) thick at the bottom.



The Challenge

For this mass concrete application, the specifications required the concrete temperature at the point of delivery to be below 85 °F (29 °C). Additionally, the concrete had to be watertight.

The Solution

Concrete producer Lawton Transit Mix of Lawton, Oklahoma, supplied a total of 900 cubic yards (700 cubic meters) of concrete containing MasterLife 300D integral waterproofing admixture from Master Builders Solutions for the dam. Temperature control was critical for the hour-long haul covering 20 miles (32 km) and with over 90 °F (32 °C) ambient temperatures. Lawton Transit Mix used slag cement, Class C fly ash, chilled water, and MasterSet DELVO hydration-controlling admixture from Master Builders Solutions to reduce the heat of hydration of the concrete mixture. The concrete produced met the requirements specified by the Army Corps of Engineers and the concrete was placed successfully in 6 to 8 feet (1.8 to 2.4 m) lifts.

Master Builders Solutions

The Master Builders Solutions brand brings expertise to create chemical solutions for new construction, maintenance, repair and renovation of structures. Master Builders Solutions is built on the experience gained from more than a century in the construction industry.

The know-how and experience of a global community of construction experts form the core of Master Builders Solutions. We combine the right elements from our portfolio to solve your specific construction challenges. We collaborate across areas of expertise and regions and draw on the experience gained from countless construction projects worldwide. We leverage global technologies, as well as our in-depth knowledge of local building needs, to develop innovations that help make you more successful and drive sustainable construction.

The comprehensive portfolio under the Master Builders Solutions brand encompasses concrete admixtures, cement additives, chemical solutions for underground construction, fiber reinforcement solutions, waterproofing solutions, sealants, concrete repair and protection solutions, performance grouts, and performance flooring solutions.

Project Spotlight

MasterLife 300D

Crystalline Capillary Waterproofing Admixture

Mayo Clinic Medical Building

Location

Jacksonville, Florida

Owner

Mayo Clinic

Design Engineer

Walter P Moore

Contractor

Robins & Morton

Concrete Producer

Titan Concrete Inc.

Concrete Volume

1200 yd³ (917 m³)

Application

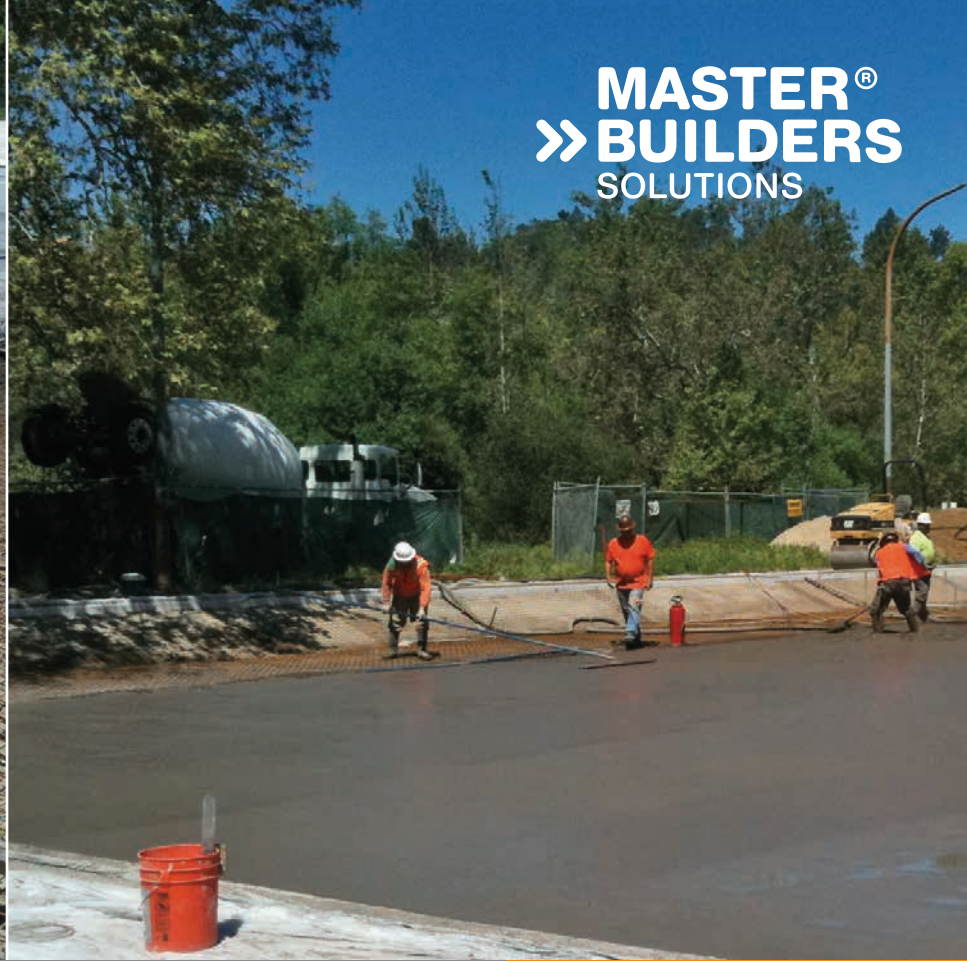
Slab-on-Ground &
Lightweight Roof



Contact

BASF Corporation
Admixture Systems
23700 Chagrin Boulevard
Cleveland, Ohio 44122-5544
Tel: 800 628-9990
Email: admixtures@basf.com

BASF Canada, Inc.
Admixture Systems
100 Milverton Drive
Mississauga, ON L5R 4H1
Tel: 289-360-1300



Project Spotlight

MasterLife[®] 300D

Crystalline Capillary Waterproofing Admixture

Project

Pasadena Casting Pond

Location

Pasadena, CA

Owner

Pasadena Casting Club

Design Engineer

Public Works Dept.,
City of Pasadena

Contractor

Mallcraft, Inc.

Concrete Producer

Holliday Rock Co., Inc.

Application

Shotcrete for slab-on-ground

**Master Builders Solutions
Admixtures US, LLC**

23700 Chagrin Boulevard
Cleveland, Ohio 44122-5544
800-628-9990

**Master Builders Solutions
Canada, Inc.**

1800 Clark Boulevard
Brampton, Ontario L6T 4M7
800-387-5862

Follow us at:     

© registered trademark of a MBCC Group member in many countries of the world
© 2021 MBCC Group rev 4/21 OTH-PSL-0877, Lit #: AD3000167

A brand of
MBCC GROUP



Project Spotlight

MasterLife[®] 300D

Crystalline Capillary Waterproofing Admixture

Project

Orange County Water
Filtration Oxidation Plant

Location

Fountain Valley, CA

Owner

Orange County
Sanitation District

Design Engineer

Herbert Rowland
& Grubic, Inc.

Contractor

WM Lyles

Concrete Producer

Holliday Rock

Volume

6,000 yd³ (4,600 m³)

Application

Tanks

Master Builders Solutions
Admixtures US, LLC
23700 Chagrin Boulevard
Cleveland, Ohio 44122-5544
800-628-9990

Master Builders Solutions
Canada, Inc.
1800 Clark Boulevard
Brampton, Ontario L6T 4M7
800-387-5862

Follow us at:     

© registered trademark of a MBCC Group member in many countries of the world
© 2021 MBCC Group rev 4/21 OTH-PSL-1141, Lit #: AD3000257

A brand of
MBCC GROUP



Project Spotlight

MasterLife® 300D

Crystalline Capillary Waterproofing Admixture

Project

Weymouth Oxidation Facilities

Location

Los Angeles, CA

Owner

Metropolitan Water District
of Southern California

Design Engineer

Carollo Engineers

Contractor

Holliday Rock

Concrete Producer

Archer Western

Volume

18,000 yd³ (13,760 m³)

Application

Slab-on-Ground, Walls, Tanks

**Master Builders Solutions
Admixtures US, LLC**

23700 Chagrin Boulevard
Cleveland, Ohio 44122-5544
800-628-9990

**Master Builders Solutions
Canada, Inc.**

1800 Clark Boulevard
Brampton, Ontario L6T 4M7
800-387-5862

Follow us at:     

© registered trademark of a MBCC Group member in many countries of the world
© 2021 MBCC Group rev 4/21 OTH-PSL-1147c, Lit #: AD300234

A brand of
MBCC GROUP



MasterLife® 300 Series Admixture Project List

Water/Wastewater Projects

Project Name	City	State	Engineer/Architect
Utilities Water Treatment Plant (WTP) Finish Water Pumping Improvements	Decatur	Alabama	Constantine Engineering
Tin Mill Road Sanitary Sewer Replacement	Birmingham	Alabama	Engineers of the South
2019 Pump Station Upgrades No.1 Jefferson Metropolitan, McAdory, and Coleman Lakes	Pleasant Grove	Alabama	Hazen and Sawyer
Newfound Creek No. 1 and No. 2 Pump Station Improvements	Pleasant Grove	Alabama	Hazen and Sawyer
Lake Wilmore Park Community Center Swimming Pool	Auburn	Alabama	Davis Architects
3M Decatur Water Quality Outfall Building BP 06	Decatur	Alabama	Toltz, King, Duvall, Anderson & Associates
Diversion Ditch, Pogo Gold Mine	Fairbanks	Alaska	SRK Consulting
Alternative Recovery Well R-5 Equipping	Gilbert	Arizona	Burgess & Niple, Inc.
Water line Improvement 2014	Carefree	Arizona	Carefree Water Company
The Collective Storage Facility	Phoenix	Arizona	Robert Brown Architects
Chinle WWTP Improvements	Phoenix	Arizona	Dyron Murphy Architects
Kayenta WWTP Improvements	Kayenta	Arizona	WSP USA - Environment & Infrastructure
Creighton University Health Science Campus Building 18080.100	Phoenix	Arizona	Butler Design Group
Uptown Seventh Street Self-Storage	Phoenix	Arizona	JTA Engineering
Training Tower Concrete Foundation	Bullhead City	Arizona	CEO Structural Engineers
WWTP Expansion West Memphis Utility Commission	West Memphis	Arkansas	Fisher-Arnold Inc.
University of Arkansas Medical School Parking Deck 4	Little Rock	Arkansas	Walter P. Moore
Chaffey College Swimming Pool Renovation	Rancho Cucamonga	California	Chaffey College/HMC Architecture
WWTP Improvements	Firebaugh	California	Gouveia Engineering
Burnham Smith Park - Splashpad	Corcoran	California	A & M Consulting Engineers
Palisades Sewer Lift Station Replacement	Calistoga	California	Adobe Associates, Inc.

Master Builders Solutions Admixtures US, LLC
 23700 Chagrin Boulevard, Beachwood, OH 44122
www.master-builders-solutions.com
 Telephone (800) 628-9990

SEWPCP New Headworks Facility - New Headworks Construction	San Francisco	California	Carollo Engineers
Southeast Plant New Headworks	San Francisco	California	Carollo Engineers, Inc
Headworks Rehabilitation at Plant 1	Fountain Valley	California	Carollo Engineers, Inc.
Angelo J. Rossi Pool Renovation	San Francisco	California	City & County of San Francisco
North Outfall Sewer (NOS) Rehabilitation Unit 13 - Forney Street To Duvall Street	Los Angeles	California	City of Los Angeles - DPW Bureau of Engineering
Arlington Ave Sanitary Sewer Rehab Jefferson Bl to Rodeo Road	Los Angeles	California	City of Los Angeles - DPW Bureau of Engineering
North Outfall Sewer Rehabilitation Unit 4 - Trinity from 41st to Alley South of 23rd Street	Los Angeles	California	City of Los Angeles - DPW Bureau of Engineering
Dolores Bengtson Aquatic Center Locker Room Renovation (Re-bid)	Pleasanton	California	City of Pleasanton
North City Pure Water Facility	San Diego	California	City of San Diego
Moreno Pump Station and Pipelines	San Diego	California	City of San Diego
Stockton Regional Wastewater Control Facility	Stockton	California	City of Stockton
Peters Canyon Channel Improvements	Tustin	California	City of Tustin
CSA 70, Zone CG -Horizontal Well at Pine Ridge 5014	San Bernardino	California	County of San Bernardino Special District Dept.
Well No. 5 Building Enclosure	San Bernardino	California	County of San Bernardino Special District Dept.
Waterman Hydroelectric Improvements	San Bernardino	California	Domenichelli And Associates
Primary Sedimentation Expansion and Improvements	Pleasanton	California	Dublin San Ramon Services District/HDR Inc.
North Interceptor Relief Sewer, Buchanan Street and Page Street Intertie Structures and Eastshore Highway Interceptor	Albany	California	East Bay Municipal Utility District (EBMUD)
Main Wastewater Treatment Plant Secondary Clarifier Rehab	Oakland	California	EBMUD
Carisbrook Reservoir & Skyline Pumping Plant Replacements and Montclair Reservoir Rehabilitation	Oakland	California	EBMUD
North Interceptor Relief Sewer - Virginia Street Intertie Structure	Oakland	California	EBMUD
San Pablo Clearwell and Rate Control Station Replacement	Berkeley	California	EBMUD
Derby Scenic Acorn 1 Reservoirs Rehabilitation	Danville	California	EBMUD
Orinda Water Treatment Plant Disinfection and Chemical Systems Safety Improvements	Orinda	California	EBMUD
Farrelly Pool Replacement	San Leandro	California	Glass Architects
Fitzgerald Creek Water Pollution Control Plant Expansion to 11.75 MGD	Woodstock	California	Hazen and Sawyer

Enhanced Treatment and Site Upgrade - Phase 1A Aeration Basin Modifications	Union City	California	Hazen and Sawyer
OCSD Plant 1 Sludge Dewatering & Odor Control	Fountain Valley	California	HDR Inc.
Orange County Water Filtration Oxidation Plant	Fountain Valley	California	HDR Inc.
Recycled Water Extension Project at Los Angeles International Airport	Los Angeles	California	HNTB
Livermore Valley Joint USD Construction Projects	Livermore	California	Lionakis
Soto Street (near 2372) between Huntington Drive and Multnomah Street-Debris Barrier	Los Angeles	California	Los Angeles-Construction Div.-Plan
Private Residence Pool & Spa	Los Angeles	California	Mark L. Smith, AIA
Weymouth Oxidation Facilities	La Verne	California	Metropolitan Water District Southern California
Beverly Gardens Park Water Feature	Beverly Hills	California	Mia Lehrer + Associates
Itasca State Park Wastewater Treatment Ponds	San Francisco	California	MSA Professional Services, Inc.
Rehabilitate Sanitary Sewer	Yosemite National Park	California	National Park Service Intermountain Region
Primary Sedimentation Basins 6-31 Reliability Improvements at Plant No. 1	Fountain Valley	California	Orange County Sanitation District/Carollo Engineers, Inc.
Pasadena Casting Pond	Pasadena	California	Public Works Dept, City of Pasadena
Petaluma High School Pool Replacement	Petaluma	California	Quattrocchi Kwok Architects/ZFA Structural Engineers
Marine Mammal Pools Renovation Expansion Phase 2	Santa Cruz	California	Rutherford & Chekene
Westside Pump Station Reliability Improvements	San Francisco	California	San Francisco Public Utilities Commission
College Hill Reservoir Outlet Structure and Pipeline	San Francisco	California	San Francisco Public Utilities Commission
Southeast Water Pollution Control Plant New Headworks Facility	San Francisco	California	San Francisco Public Utilities Commission / Carollo Engineers, Inc.
San Tomas Aquino Creek Erosion Repairs	Campbell	California	Santa Clara Valley Water District
Silverado Vineyards Pond Improvements	Napa	California	Summit Engineering, Inc.
City Hall Plaza Improvements and Leo Fontana Fountain	Antioch	California	Swatt Miers Architects
Roseville Aquatics Complex Slide and Water Play Structure Replacement	Roseville	California	Water Technology, Inc.
Quinn Central Plant Replacement & Water Reclamation	Santa Rosa	California	ZFA Structural Engineers
Wastewater Treatment Facility (Improvements)	Wray	Colorado	Short Elliott Hendrickson Inc.
Wastewater Treatment & Reclamation Facility Nitrification	Greeley	Colorado	Carollo Engineers, Inc.

Avon Wastewater Treatment Facility (WWTF) Nutrient Upgrades	Avon	Colorado	Carollo Engineers, Inc.
Mt. Crested Butte Water Treatment Plant Expansion	Crested Butte	Colorado	JVA, Inc.
Sherman Westminster B3 Apartments/Retail/Parking - Rooftop Swimming Pool	Westminster	Colorado	Martino & Luth
South Street WWTF & Force Main	Ridgefield	Connecticut	AECOM
Danbury Water Pollution Control Plant Upgrade	Danbury	Connecticut	Black & Veatch/Wright-Pierce
Route 7 Pump Station, Force Main and WWTF Decommissioning	Ridgefield	Connecticut	Town of Ridgefield
Heritage Village WWTF	Southbury	Connecticut	Weston & Sampson
Water Pollution Control Facility Comprehensive Upgrade	Harwinton	Connecticut	Wright-Pierce
Marvin Beach Pump Station Rehabilitation and Other Pump Station Improvements	Norwalk	Connecticut	Wright-Pierce
Pinellas County Water Treatment Plan	St. Petersburg	Florida	AECOM
STA 1W Expansion #2 STA	West Palm Beach	Florida	AECOM
Iron Bridge RWRF Wetlands Pump Station Improvements	Oviedo	Florida	AECOM / The Glattig Jackson Group
Deltona Eastern Wastewater Treatment Plant	Deltona	Florida	Baskerville Donovan, Inc.
Otter Creek WWTP (Expansion)	Sopchoppy	Florida	Baskerville Donovan, Inc.
Edgewater Lift Station (Replacement)	Panama City Beach	Florida	Baskerville Donovan, Inc.
Deep Injection Wells No. 3 and No. 4 Pump Station	Hollywood	Florida	Brown and Caldwell
Citywide Sanitary Sewer Rehabilitation - Manhole Rehab	Miami	Florida	City of Coral Gables
Iron Bridge Regional WRF Biosolids System Improvement	Orlando	Florida	City of Orlando / Carollo Engineers, Inc.
Sudduth Park Improvements	Panama City	Florida	City of Panama City
North Panama City Sewer Improvements	Panama City	Florida	City of Panama City
Star Avenue Force Main Improvements	Panama City	Florida	City of Panama City
Sun-N-Fun Water Park Rehabilitation	Naples	Florida	CPH
Lift Station #92 Wastewater Improvements	Panama City	Florida	Dewberry
Lift Station #34 Wastewater System Improvements	Panama City	Florida	Dewberry
Big Bend Water Treatment Plant	Steinhatchee	Florida	Hatch Mott MacDonald
Cypress Manor WWTF Plant Improvements	Dade City	Florida	Hazen and Sawyer
Construction of Aeration Basin No. 5 and New Headwork Bypass to Junction Box	West Palm Beach	Florida	Hazen and Sawyer/City of West Palm Beach
Suwannee County Catalyst Site Water Treatment Plant	Live Oak	Florida	Malcolm Pirnie Arcadis US Inc.
South District Wastewater Treatment Plant Electrical Distribution Building	Miami	Florida	Miami Dade Water & Sewer Department

Furnish and Install 42-inch PCCP/HDPE Force Main Along North Miami Avenue	Miami	Florida	Miami Dade Water & Sewer Department
Water and Wastewater Services to Commercial Properties Green Tech Corridor S-8	Miami	Florida	Miami Dade Water & Sewer Department
72-Inch Water Main In West 2nd Avenue Between 11th Street and 13th Street	Miami	Florida	Miami Dade Water & Sewer Department
Proposed 16-inch, 12-inch, and 8-inch Water Main and 10-inch and 8-inch Gravity Sewer	Miami	Florida	Miami Dade Water & Sewer Department
Citywide Sanitary Sewer Rehabilitation	Coral Gables	Florida	Miami Dade Water & Sewer Department
Springfield Sewer System Rehabilitation	Panama City	Florida	Mott MacDonald
Effluent Disposal project	ChIPLEY	Florida	Mott MacDonald
Improvements to PS11 and PS14	Panama City	Florida	Mott MacDonald
South Florida Water Management District STA-W1 Expansion	Palm Beach	Florida	MWH Americas
Utilities Pump Station Improvements	Orlando	Florida	Orange County
Orange County Gravity Replacement Package 29	Orlando	Florida	Orange County
Southwest Marriott Pump Station #3597 Odor Control System	Orlando	Florida	Orange County
Northwest Water Reclamation Facility Blowers and Sludge Pump Replacement and System Improvements	Apopka	Florida	Orange County
Utilities Pump Station Improvements Package 34	Orlando	Florida	Orange County
Orangewood Boulevard and Gateway Avenue Intersection Improvements	Williamsburg	Florida	Orange County
Chickasaw Trail Forcemain	Orlando	Florida	Orange County
Lake Underhill Road Forcemain Replacement	Orlando	Florida	Orange County
Orange County South Water Reclamation Facility - Phase 5	Orlando	Florida	Orange County / AECOM / Black & Veatch
South Water Reclamation Facility & Pump Station Improvement	Orlando	Florida	Orange County Board of Commissioners
Bunkers Cove Water System Improvements	Panama City	Florida	Panhandle Engineering
North Spine Road West Utility Expansion	Panama City	Florida	Panhandle Engineering
C-139 Flow Equalization Basin	West Palm Beach	Florida	South Florida Water Management District (SFWMD)
STA 1W Expansion #2 G-780 and G- 781 Pump Stations	West Palm Beach	Florida	SFWMD/AECOM
STA 1W Expansion #2 G-782 Pump Station	West Palm Beach	Florida	SFWMD/AECOM
Roadway, Sewer and Water Improvements Northwest 142 Street	Hialeah	Florida	SRS Engineering, Inc.
Residence Inn/Springhill Suites Hotel/Pool	Clearwater	Florida	Uzun & Case Engineering Inc.
Sun Splash Lazy River Joint Repair	Cape Coral	Florida	Water Technology, Inc.

Everglades Agricultural Area (EAA) A1 Flow Equalization Basin	West Palm Beach	Florida	WRS Compass
Aquatic Complex Construction	Leesburg	Florida	WTI Technology, Inc.
Bear Branch Water Supply and Treatment Facility	Perry	Georgia	Carter & Sloope, Inc.
Steve Lipford Water Treatment Plant Improvements	Franklin	Georgia	Carter & Sloope, Inc.
Eastanolle Creek Water Pollution Control Plant Improvements - Phase 1	Toccoa	Georgia	Carter & Sloope, Inc.
Wolf Creek Water Pollution Control Plant Upgrade	Gary	Georgia	Carter & Sloope, Inc.
Briarwood Park Pool	Atlanta	Georgia	Lose Design
Kaneohe/Kailua Tunnel Influent Facility	Kailua	Hawaii	Brown & Caldwell Inc.
Kamehameha Highway Wastewater Pump Station Upgrade	Honolulu	Hawaii	City & County of Honolulu
Waianae Wastewater Treatment Plant Electrical Improvements	Honolulu	Hawaii	City & County of Honolulu
Waianae Wastewater Treatment Plant Improvements and Upgrade	Honolulu	Hawaii	City & County of Honolulu
Ahuimanu Wastewater Pre-Treatment Facility Force Main - Haiku Road Sewer	Honolulu	Hawaii	City & County of Honolulu
Honouliuli Wastewater Treatment Plant Return Flow Pump Station	Ewa Beach	Hawaii	City & County of Honolulu
Wastewater Treatment Plant Primary Effluent Junction Box Repair	Honaunau	Hawaii	City & County of Honolulu
Sand Island WWTP - UV Disinfection and Effluent Pump Station Odor Control System	Honolulu	Hawaii	City & County of Honolulu
Waianae Wastewater Treatment Plant Improvements and Upgrade	Waianae	Hawaii	City & County of Honolulu
Laie Water Reclamation Facility (WRF) Sludge Dewatering Equipment	Honolulu	Hawaii	City & County of Honolulu
Waianae Waste Water Treatment Plant Sludge Dewatering Equipment	Waianae	Hawaii	City & County of Honolulu
Laie Water Reclamation Facility Pond Relining	Honolulu	Hawaii	City & County of Honolulu
Sand Island Wastewater Treatment Plant Sidestream Wastewater Treatment Plant	Honolulu	Hawaii	City & County of Honolulu
Sand Island WTP GTO Manhole Replacement	Honolulu	Hawaii	City & County of Honolulu
Punahou Street Sewer Reconstruction Sewer I/I Ala Moana Basin	Honolulu	Hawaii	City & County of Honolulu
Honouliuli Wastewater Treatment Plant Secondary Treatment Phase 1B - Secondary Compliance Facilities	Ewa Beach	Hawaii	City & County of Honolulu
Pauoa Area Sewer Ala Moana Basin Improvements	Honolulu	Hawaii	City & County of Honolulu
Kakaako and Punahou Area Sewer Reconstruction Sewer I/I Ala Moana Basin	Honolulu	Hawaii	City & County of Honolulu
Moiiliili Area Sewer Reconstruction Sewer I/I Ala Moana Basin	Honolulu	Hawaii	City & County of Honolulu
Sand Island WTP Ultraviolet Channels Installation	Honolulu	Hawaii	City & County of Honolulu

Kiaialiu Street Sewer Reconstruction	Honolulu	Hawaii	City & County of Honolulu
Waianae Wastewater Treatment Plant Digester 2 Improvements	Waianae	Hawaii	City & County of Honolulu
Kanaohe Bay #2 Wastewater Pump Station Force Main	Kanaohe	Hawaii	Element Environmental, LLC
West Maui Recycled Water - UV Expansion	Lahaina	Hawaii	Fukunaga & Associates, Inc.
Repair Waimea Levee at Gate A and New Pump Station	Waimea	Hawaii	Kauai Purchasing
West Maui Recycled Water Expansion - Phase 2	Lahaina	Hawaii	Maui County
Uluniu Avenue Sewer Reconstruction Sewer	Honolulu	Hawaii	ParEn, Inc.
Hoolehua Water System Improvements (PWS 230) Package 1 Hoolehua	Kaunakakai	Hawaii	State of Hawaii - Department of Hawaiian Homelands - Hawaiian Homes Commission
Kaneohe & Kailua Sewer Tunnel	Honolulu	Hawaii	Wastewater Division, Department of Design and Construction, City and County of Honolulu
Well #6 Water Tank, Booster Station, Well House	Chubbuck	Idaho	Keller Associates
Ammon Well 13, Tank and Booster Station	Ammon	Idaho	Keller Associates
Coeur D'Alene Tribe Marimn Health Youth Center	Worley	Idaho	Water Technology, Inc.
Pool Rehabilitation Project	Caldwell	Idaho	ALSC Architects
Spring Valley Water Storage Reservoirs	Meridian	Idaho	Alliance Consulting
Repair Utility Tunnel	Pocatello	Idaho	Keller Associates
Wastewater Treatment Plant Capacity Expansion	St Joseph	Illinois	Clark Dietz
Village of Lake Villa Lift Station No. 5 Improvements	Lake Villa	Illinois	Applied Technologies, Inc.
Hagele Beach Lift Station	Lake In The Hills	Illinois	Applied Technologies, Inc.
Electrical Upgrades & Filter Building Improvements	Lake In The Hills	Illinois	Applied Technologies, Inc.
Village of Lake Villa Lift Station No. 5 Improvements	Lake Villa	Illinois	Applied Technologies, Inc.
Apple Canyon Lake Pool Facility	Apple River	Illinois	Dewberry Architects, Inc.
Naperville Biosolids Holding Tank (Springbrook Bio-Solids Holding Tank (Replacement))	Naperville	Illinois	Donohue & Associates, Inc.
Pekin Wastewater Treatment Plant	Pekin	Illinois	Farnsworth Group
Pekin Wastewater Treatment Plant Phase 2B	Pekin	Illinois	Farnsworth Group
Knowlton Health and Wellness Aquatics Center	Rock Island	Illinois	IMEG Group/Water Technology Inc.

Calumet Sludge Thickening Project	Chicago	Illinois	Metropolitan Water Reclamation District of Greater Chicago
Mt. Zion 1.0 M.G. Elevated Water Storage Tank	Mount Zion	Illinois	MSA Professional Services, Inc.
Milford Lift Station C Rehab	Milford	Illinois	MSA Professional Services, Inc.
Locust Street Sanitary Sewer Rehabilitation	Elizabeth	Illinois	MSA Professional Services, Inc.
Waverly Wastewater Treatment Plant	Martinsville	Indiana	Beam Longest & Neff LLC
St. Paul Storm Water Drainage Improvements*	St. Paul	Indiana	Burgess & Niple, Ltd.
2015/2016 WWTP Improvements	Uniondale	Indiana	CE Solutions, Inc.
Wastewater Treatment Plant Improvements	Elberfeld	Indiana	CE Solutions, Inc.
Mackey Arena Steam Pit and Steam Pit G Replacement and Repairs - 2018	West Lafayette	Indiana	CE Solutions, Inc.
Water Systems Improvements Project - Division A - Water Treatment Plant, Division B - Elevated Storage Tank Improvements	Flora	Indiana	CE Solutions, Inc.
Wastewater Treatment Plant (Expansion)	Warsaw	Indiana	CE Solutions, Inc.
Water Treatment Plant	Wolcott	Indiana	CE Solutions, Inc.
Water System Improvements Div. A	West Terre Haute	Indiana	CE Solutions, Inc.
Lift Station No. 19 Rehabilitation	Lawrence	Indiana	CE Solutions, Inc.
Water Utility Improvements - Division C - Concrete Tank Repairs and Redundant Tank - Phase 2	Crown Point	Indiana	CE Solutions, Inc.
West Lafayette Tarkington Hall Brine Tank Rehabilitation	West Lafayette	Indiana	CE Solutions, Inc.
Wastewater System Improvements	Gaston	Indiana	CE Solutions, Inc./ Commonwealth Engineers, Inc.
Long Term Control Plan Phase III, Division B - WWTP Improvements	Paoli	Indiana	CE Solutions, Inc./ Commonwealth Engineers, Inc.
Delaware County Regional Wastewater District - Collection System Improvements Project - Division A - Collection System Improvements	Daleville	Indiana	Commonwealth Engineers, Inc.
LTCP Improvements Phase 1	Berne	Indiana	Commonwealth Engineers, Inc.
Water Line and Drain Pipe Improvements at Cikana State Fish Hatchery (SFH)	Martinsville	Indiana	Commonwealth Engineers, Inc.
Westport Water System Improvements	Westport	Indiana	Commonwealth Engineers, Inc.
Wastewater Utilities Improvements	Chesterfield	Indiana	Commonwealth Engineers, Inc.
Water Utility Improvements, Division C - Phase 3	Crown Point	Indiana	Commonwealth Engineers, Inc.
Wastewater Treatment Plant Improvements	Wolcott	Indiana	Commonwealth Engineers, Inc.

Wastewater Treatment Plant Improvements	Laurel	Indiana	Commonwealth Engineers, Inc.
Warren Water Utility Improvements - Div. A & B	Warren	Indiana	Commonwealth Engineers, Inc.
Wastewater Treatment Plant and Lift Station Upgrades	Rochester	Indiana	Commonwealth Engineers, Inc.
WWTP Improvements Disk Filter Replacement	Berne	Indiana	Commonwealth Engineers, Inc. / CE Solutions
Jefferson High School - Natatorium	Lafayette	Indiana	Cordogan Clark Associates, Inc.
Sunrise Pump Station	Evansville	Indiana	Donohue & Associates Inc.
Contract C - Underground Piping Phase 1	Evansville	Indiana	Donohue & Associates Inc.
Huntertown Collection System and Equalization Basin	Huntertown	Indiana	Engineering Resources, Inc.
Ossian Waste Water Treatment Plant Improvements 2020	Ossian	Indiana	Engineering Resources, Inc.
Memphis Wastewater Treatment Plant (WWTP) Expansion	Memphis	Indiana	Heritage Engineering
Bedford Water Treatment Plant	Bedford	Indiana	Lochmueller Group
North Vernon WWTP Long Term Control Plan (Improvements) - Phase 2	North Vernon	Indiana	Lochmueller Group
2021 WWTP Improvements	Lawrenceburg	Indiana	MS Consultants, Inc.
West Lafayette Indoor Recreation & Aquatics Center	West Lafayette	Indiana	Perkins & Will, Inc.
Natatorium & PAC Renovation/Addition	Evansville	Indiana	Water Technology, Inc.
IAA Stormwater & Deicing Infrastructure Project	Indianapolis	Indiana	Wessler Engineering, Inc.
Alleman Wastewater Treatment Facility	Alleman	Iowa	Bartlett & West
Natatorium and Fieldhouse Addition to Mason City High School	Mason City	Iowa	Bergland and Cram Architects/Water Technology, Inc.
Kerper Boulevard Sanitary Sewer Reconstruction	Dubuque	Iowa	City of Dubuque
Water Treatment Plant	Ames	Iowa	HDR Engineering Inc./FOX Engineering
Wastewater Treatment System Improvements	Wilton	Iowa	HR Green
Wastewater Treatment Plant Improvements	Williamsburg	Iowa	HR Green
Memorial Lift Station Improvements	Storm Lake	Iowa	I & S Group Inc.
Improvements to the Existing Water Reclamation Facility and Lift Stations	Rockwell City	Iowa	I & S Group, Inc.
Eagle Grove Lift Station #1	Eagle Grove	Iowa	ISG Group
2020 Aquatic Facility	Holstein	Iowa	JEO Consulting Group, Inc.
Water Systems Improvements 2010 La Porte City	La Porte City	Iowa	MSA Professional Services, Inc.
Hales Mill Lift Station	Asbury	Iowa	MSA Professional Services, Inc.
Truro Sanitary Sewer	Truro	Iowa	MSA Professional Services, Inc.

Sumner Water & Sewer Treatment Plant	Sumner	Iowa	MSA Professional Services, Inc.
Aplington Wastewater Treatment Facility 2015	Aplington	Iowa	MSA Professional Services, Inc.
Cloie Creek Park Amenities	Asbury	Iowa	MSA Professional Services, Inc.
Wastewater Treatment Plant (Upgrade)	Cascade	Iowa	MSA Professional Services, Inc.
Durant Water System Improvements	Durant	Iowa	MSA Professional Services, Inc.
Asbury Park Elevated Water Storage	Asbury	Iowa	MSA Professional Services, Inc.
Sodium Hypochlorite Storage Tank Replacement	West Des Moines	Iowa	MSA Professional Services, Inc.
2018 Wastewater Treatment Improvements	Story City	Iowa	MSA Professional Services, Inc.
Wastewater Treatment Flow Monitoring	Story City	Iowa	MSA Professional Services, Inc.
2019 WWTF Design Phase 1	Story City	Iowa	MSA Professional Services, Inc.
Wastewater Improvements 2021	Ladora	Iowa	MSA Professional Services, Inc.
Elk Run Heights and Raymond Waste Water Treatment Facility	Raymond	Iowa	MSA Professional Services, Inc.
Elizabeth Terrapin Park Splash Pad	Elizabeth	Iowa	MSA Professional Services, Inc.
Epworth Wastewater Treatment Facility	Epworth	Iowa	MSA Professional Services, Inc.
Steam Distribution System Replacement Phase 2C - South Campus and Tunnel T5 Vault Repairs	Cedar Falls	Iowa	Shive-Hattery, Inc.
GCMU Water Treatment Plant & Clearwell Tank	Guthrie Center	Iowa	Short Elliott Hendrickson Inc. (SEH)
Wastewater Treatment Facility Improvements	Nora Springs	Iowa	SEH
2018 Water Supply and Treatment System Improvements	Lakota	Iowa	SEH
27th Street South West Lift Station	Mason City	Iowa	SEH
Wastewater Treatment Facility Upgrade	Madrid	Iowa	SEH
New Sludge Storage Tank Improvements	Osage	Iowa	SEH
New Well & Water Tower	Osage	Iowa	SEH
2020 Water System Improvements	Rudd	Iowa	SEH
Sanitary Sewer System Improvements	Lewis	Iowa	SEH
Lenon Mill Dam Emergency Repair - Phase 2	Panora	Iowa	Snyder and Associates
Steam Distribution System - Phase 2	Iowa City	Iowa	University of Iowa
Major Tunnel Repairs and Waterproofing	Kansas City	Kansas	Walter P Moore Engineering & Consultants
City of Garden City Aquatic Center - Bid Pkg #2 - Swimming Pool	Garden City	Kansas	Water Technology, Inc. (WTI Aquatics)
Family Pool Improvements	Paola	Kansas	SFS Architecture
KUMC-ORR Tunnel Repair and Waterproofing	Kansas City	Kansas	Walter P. Moore

Cravens Pool Renovation Bid 4356	Owensboro	Kentucky	City of Owensboro
Bottom Ash Clarifier	West Paducah	Kentucky	AECOM
Somerset Water Treatment Plant	Somerset	Kentucky	Bell Engineering
Water Treatment Plant (Expansion)	Greensburg	Kentucky	Bell Engineering
Buechel Basin Wastewater System Phase 1A	Louisville	Kentucky	Burgess & Niple, Inc.
Buechel Basin Wastewater System Phase 1B & 2	Louisville	Kentucky	Burgess & Niple, Inc.
2017 Manhole I and I Reduction	Frankfort	Kentucky	Burgess & Niple, Inc.
William Calvin Water Treatment Plant Expansion	Owensboro	Kentucky	HDR Architects/Engineers
2018 Water Treatment Plant	Greenup	Kentucky	Howerton Engineering & Surveying
Grand Rivers Wastewater Treatment Plant	Grand River	Kentucky	ICA Engineering
Muddy Fork Interceptor SSO Storage Basin	Louisville	Kentucky	MSD of Louisville/Jefferson County
Fairmount Road Pump Station and SSO Storage Basin	Louisville	Kentucky	MSD of Louisville/Jefferson County
Bancroft Pump Station & Collection Basin	Louisville	Kentucky	MSD of Louisville/Jefferson County
Addition & Renovation Scott High School / Kenton County Schools	Taylor Mill	Kentucky	Plaskowy and Cooper Architects
KU Ghent Unit 1 & 2 Spill Containment	Ghent	Kentucky	Qk4, Inc.
Water Treatment Plant Expansion - Desoto Parish	Grand Cane	Louisiana	Manchac Consulting Group
WWTP Upgrade	Breaux Bridge	Louisiana	DSA
Eastbank Lift Station Rehab	St. Charles Parish	Louisiana	Stuart Consulting Group
Contract 3 WWTP Improvements and Sewer Force Main	Basile	Louisiana	MML&H
Improvements to Sewer Lift Station L- 11-4	Marrero	Louisiana	Aims Group Inc.
La Highway 64 Regional Pump Station and Forcemain	Greenwell Springs	Louisiana	City of Baton Rouge
Acadian Thruway Large Diameter Sewer Rehabilitation	Baton Rouge	Louisiana	City of Baton Rouge and Parish of East Baton Rouge
Essen / Staring Large Diameter Sewer Rehabilitation	Baton Rouge	Louisiana	City of Baton Rouge/Jacobs
Plum Orchard Sewage Lift Station 404 Hazard Mitigation	New Orleans	Louisiana	Design Engineering, Inc.
LSU Recreation Complex Building & Swimming Pool	Baton Rouge	Louisiana	Grace & Hebert Architects APAC 360 Architecture
Gert Town Community Pool	New Orleans	Louisiana	HMS Architects
Algiers Water Purification Plant Improvements	New Orleans	Louisiana	HNTB Corporation - Indiana
Lift Stations 10 and 13 Improvements	Mandeville	Louisiana	Kyle Associates, LLC.
New Gator Pool Building	Jennings	Louisiana	Lewis Architecture
Ouachita Parish Fire Department Vehicle Repair Garage	West Monroe	Louisiana	Ouachita Parish Police Jury
Ouachita Parish Fire Department Vehicle Repair Garage	West Monroe	Louisiana	Ouachita Parish Police Jury

Wastewater Treatment Plant (Improvements)	Cheneyville	Louisiana	Pan American Engineers
Broadmoor YMCA Expansion Swimming Pool	Shreveport	Louisiana	Prevot Design Services APCA
Mississippi River Water Line	Convent	Louisiana	PEEC
Lewiston Fire Sub-Station 5	Lewiston	Maine	Context Architecture
Monocacy Sewage Pumping Station	Frederick	Maryland	GHD Engineering
Millers Island Sewage Pumping Station Improvements	Edgemere	Maryland	Rummel, Klepper & Kahl (RK&K)
Penwood Terrace Pumping Station Improvements	Edgemere	Maryland	RK&K
Stansbury Manor Sewage Pumping Station Improvements	Middle River	Maryland	RK&K
Fort Howard Sewage Pumping Station Improvements	Sparrows Point	Maryland	RK&K
Corsica Pumping Station Improvements	Essex	Maryland	RK&K
Replacement of National Guard Pump Station and Force Main	Havre De Grace	Maryland	RK&K
Ballenger Waste Water Treatment Plant	Ballenger	Maryland	Whitman, Requardt & Associates
Tewksbury Various WTF	Tewksbury	Massachusetts	AECOM
Upper Sackett Reservoir Dam Rehabilitation	Pittsfield	Massachusetts	AECOM
Chestnut Street Water Treatment Facility	Foxborough	Massachusetts	AECOM
Wastewater Treatment Plant Upgrades	Salem	Massachusetts	AECOM
Ashby Public Safety Complex	Ashby	Massachusetts	Caolo and Bieniek Associates, Inc.
MA Downtown Crossing Station Burnham Building Sewer	Boston	Massachusetts	Kleinfelder/SEA Consultants, Inc.
Strand Pump Station Improvements	Quincy	Massachusetts	Woodard & Curran
Ultium 3 Battery Plant, Bid Package 4	Delta Township	Michigan	OHM Advisors
Retention Treatment Basin Effluent Channel Flapgate	Wyandotte	Michigan	Hubbell, Roth & Clark
Detroit Zoo Polk Penguin Conservation Center	Royal Oak	Michigan	Albert Kahn Associates, Inc.
Ann Arbor WWTP Facilities	Ann Arbor	Michigan	Arcadis US Inc.
Lake Huron Water Treatment Plant Raw Sludge Clarifiers and Raw Sludge Pumping Systems (Improvements)	Fort Gratiot	Michigan	Arcadis US, Inc.
Rogers WWTP 2010 Improvements	Rogers City	Michigan	C2AE
Oakland Macomb Interceptor Drain	Macomb County	Michigan	NTH Consultants, Inc.
Oakland Macomb Interceptor Drain (Rehabilitation)	Various	Michigan	NTH Consultants, Inc.
Milford Wastewater Treatment Plant	Milford	Michigan	Orchard, Hiltz & McCliment, Inc. (OHM Advisors)
Canton Water Storage (Implementation)	Canton	Michigan	Orchard, Hiltz & McCliment, Inc. (OHM Advisors)
Pendills/Sullivan Creek Effluent Treatment Systems	Brimley	Michigan	US Fish and Wildlife Services - Region 3

Village of Lawrence - Wastewater System Improvements	Lawrence	Michigan	Wade Trim Inc.
Otsego High School Pool Addition	Ostego	Michigan	Water Technology, Inc.
Pump Station Replacement, Forcemain Replacement, and Screening Building	Pinckney	Michigan	Wolverine Engineers and Surveyors, Inc.
Water Treatment Plant Filter Improvements	Little Falls	Minnesota	Short Elliott Hendrickson Inc. (SEH)
2017 Island View Sanitary Sewer Extension	International Falls	Minnesota	SEH
WWTP Enhanced Effluent Quality (E2Q) (Updates)	Detroit Lakes	Minnesota	SEH
Ground Storage Reservoir and High Service Pump Room Improvement	Jackson	Minnesota	SEH
Water Treatment Plant No. 1	Cloquet	Minnesota	SEH
Lime Softening Water Treatment Plant	Breckenridge	Minnesota	Advanced Engineering & Environmental Services, Inc. (AE2S)
Saint Cloud Flow Train III Equipment WTP (Install)	St. Cloud	Minnesota	AE2S
Hopkins Lift Station 7 Rehabilitation	Moorhead	Minnesota	AE2S
St. Cloud WTF Advanced Process Improvements and Upgrades	Saint Cloud	Minnesota	AE2S
SLP4 Water Treatment Plant Improvements	Saint Louis Park	Minnesota	AECOM-Minneapolis
Sanitary Sewer Improvements	De Graff	Minnesota	Bollig Engineering, Inc.
Sanitary Sewer & Wastewater Treatment Ponds/Lift Station	Roseland	Minnesota	Bollig Engineering, Inc.
2013 Raymond Wastewater Improvements	Raymond	Minnesota	Bollig Engineering, Inc.
Grove City Wastewater Ponds	Grove City	Minnesota	Bollig Engineering, Inc.
Brooklyn Center Water Treatment Facilities	Brooklyn Center	Minnesota	Bolton & Menk, Inc.
Water Treatment Facility	Morris	Minnesota	Bolton & Menk, Inc.
Wastewater Treatment Facility Improvements	Blue Earth	Minnesota	Bolton & Menk, Inc.
Water Treatment Facility Improvements	Carver	Minnesota	Bolton & Menk, Inc.
Water Treatment Plant & System Improvements	Carlton	Minnesota	Donohue & Associates Inc.
Lift Station and Force Main	Hopkins	Minnesota	Metropolitan Council Environmental Engineers
East Side Storage & Maintenance Facility	Minneapolis	Minnesota	Meyer Borgman Johnson
Birch Point Wastewater Treatment Plant & Collection System	Twig	Minnesota	MSA Professional Services, Inc.
2017 Primary Pond Upgrades	Willow River	Minnesota	MSA Professional Services, Inc.
Ground Storage Reservoir	Newport	Minnesota	MSA Professional Services, Inc.
Lift Station 15 Relocation	Duluth	Minnesota	MSA Professional Services, Inc.
Allemansratt Park Improvements	Lindstrom	Minnesota	MSA Professional Services, Inc.

Onsite Sanitary Treatment System at Scenic State Park	Bigfork	Minnesota	MSA Professional Services, Inc.
Mora Wastewater Treatment Facility Phosphorus	Mora	Minnesota	Short Elliott Hendrickson Inc. (SEH)
Elk River Water Treatment Plant 7	Elk River	Minnesota	SEH
Koochiching County, Island View Sanitary Sewer Extension	International Falls	Minnesota	SEH
Glencoe Phosphorus Lift Station	Glencoe	Minnesota	SEH
Locke Park Water Treatment Plant Improvements	Fridley	Minnesota	SEH
Wastewater Treatment Facility Improvements	Little Falls	Minnesota	SEH
Water Treatment Plant	Faribault	Minnesota	SEH
Moorhead MN Lime Sludge Dewatering Facility	Moorhead	Minnesota	SEH
Meter Station M228A, Interceptor 7015C, and L35 Repair	Brooklyn Park	Minnesota	SEH
Minnetrissa Water Treatment Facilities	Minnetrissa	Minnesota	SEH
West Water Treatment Plant	Chanhassen	Minnesota	WSB & Associates
New Water Treatment Plant, Magee's Creek Water Association	Walthall County	Mississippi	Dungan Engineering
Central Pumping Station Modifications Contract A	Tupelo	Mississippi	Cook Coggin Engineers
SMS: Services Agreement for Miscellaneous Utility Repairs	Pascagoula	Mississippi	Compton Engineering, Inc.
Durant Sewer & Water System (Improvements)	Durant	Mississippi	Cook Coggin Engineers, Inc.
2018 CDBG Wastewater Treatment Plant Upgrades	Coldwater	Mississippi	Neel Schaffer, Inc.
Allen Subdivision Sanitary Sewer Diversion	Horn Lake	Mississippi	Neel Schaffer, Inc.
Southaven Hurricane Sewer Phase 2B	Southaven	Mississippi	Neel Schaffer, Inc.
Hurricane Creek Sewer Phase 4	Southaven	Mississippi	Neel Schaffer, Inc.
Natchez Aquatic Center Shower/Locker Room Addition	Natchez	Mississippi	Waycaster & Associates Architects
Aquatic Center & Multipurpose Fields (Phase II)	Natchez	Mississippi	Waycaster & Associates Architects
Lake Mykee Wastewater Regionalization	Holts Summit	Missouri	Bartlett & West, Inc.
Water Collection & Treatment Facility (Improvements) [Johnson County PWS 3 Wastewater Facility]	Warrensburg	Missouri	Allstate Consultants, LLC
FSP ACWWC BP2 Water Treatment Plant	Atchison County	Missouri	Bartlett & West
Water Treatment Plant	Lexington	Missouri	Bartlett & West
High Service Pump Station and Clearwell	Lexington	Missouri	Bartlett & West
Heckart Community Center	Sedalia	Missouri	SFS Architecture, Inc.
Pipestone Creek at Smith Ranch	Boulder	Montana	Confluence Consulting, Inc.
Indoor Aquatics and Recreation Center	Great Falls	Montana	LPW Architecture (L'Heureux Page Werner)
Dillon Wastewater Treatment Plant Improvements	Dillon	Montana	Manion Engineering

Concrete Sump Installation and Concrete Tanks (Bozeman Fish Technology Center)	Bozeman	Montana	Martin Martin Consulting Engineers
BSB N-6 Sanitary Sewer Replacement	Butte	Montana	Water & Environmental Technologies
Butte-Silver Bow Montana Tech Wastewater Gravity Sewer	Butte	Montana	Water & Environmental Technologies
BSB Gold and Alabama Sewer Re-Route Project	Butte	Montana	Water & Environmental Technologies
TSEP Sanitary Sewer Replacement/Rehabilitation	Butte	Montana	Water & Environmental Technologies
Schrute Farms	Lincoln	Nebraska	Nebco Materials
Riverview Lift Station	Omaha	Nebraska	Carollo Engineers, Inc.
Wastewater Treatment Plant 2021 Upgrade	Fremont	Nebraska	HDR Inc.
Florence Water Treatment Plant Phase 2	Omaha	Nebraska	Omaha-Metropolitan Utilities District/HDR Inc.
Hampton Inn by Hilton - UN Medical Center	Omaha	Nebraska	River Street Architecture
Lorenzi Park (Water Feature)	Las Vegas	Nevada	City of Las Vegas
Newport WWTF	Newport	New Hampshire	AECOM
Peirce Island WWTF Upgrades	Portsmouth	New Hampshire	AECOM
Madbury Backwash Tank and Pump Station Upgrade	Madbury	New Hampshire	Hazen and Sawyer
Keene Wastewater Treatment Plant	Swansey	New Hampshire	Hoyle Tanner & Associates, Inc.
Medford Waste Water Treatment Plant	Medford	New Jersey	Environmental Resolutions, Inc
Paulsboro Borough WTP	Paulsboro	New Jersey	Sickels & Associates
Peter S. Connor Memorial Pool Improvements	South Orange	New Jersey	LAN Associates
Red Bulls Training Complex	Morristown	New Jersey	walter P. Moore
Secondary Bypass and Sludge Train Recycles Rerouting	Newark	New Jersey	Hazen and Sawyer
Hobbs Health & Wellness Learning Center (Swimming Pool)	Hobbs	New Mexico	Barker Rinker Seacat Architecture
CRRUA North Wastewater Treatment Plant Replacement	Santa Teresa	New Mexico	Bohannon Huston, Inc.
SWRP Primary Treatment Facility Headwords	Albuquerque	New Mexico	CDM Smith
North Waterline River Crossing - Phase I	Los Lunas	New Mexico	Molzen-Corbin & Associates
Huning Ranch Loop East Sewer Interceptor Line	Los Lunas	New Mexico	Molzen-Corbin & Associates
Lea County Airport Water and Sewer Extension	Hobbs	New Mexico	Molzen-Corbin & Associates
North Gonzales Water Line Replacement	Las Vegas	New Mexico	Molzen-Corbin & Associates
Sandhill Sewer Interceptor - Phase II	Las Cruces	New Mexico	Molzen-Corbin & Associates
Warehouse Lift Station Removal and Sewer Improvements	Santa Fe	New Mexico	Molzen-Corbin & Associates
Portales Reuse System Pipeline	Portales	New Mexico	Smith Engineering

Wastewater Treatment Plant (WWTP) District 5 Improvements	Las Cruces	New Mexico	Souder, Miller and Associates
Waste Water Treatment Plant Improvements	Alto	New Mexico	Souder, Miller and Associates
Alto Lakes W&SD Waste Water Treatment Plant Improvements	Ruidoso	New Mexico	Souder, Miller and Associates
Albuquerque BioPark Penguin Chill Habitat	Albuquerque	New Mexico	Van H Gilbert Architect PC
Albuquerque BioPark River Otter Exhibit	Albuquerque	New Mexico	Van H Gilbert Architect PC
Standish Water District No. 1 Water Improvements	Saranac	New York	AES Northeast
Wastewater Treatment Plant and Pump Stations Construction	Crown Point	New York	AES Northeast
Pump Station 7W Improvements	Canandaigua	New York	Arcadis
Pump Station 9E Improvements	Canandaigua	New York	Arcadis
Banks A, B & C Replacement, Main Substation	Buffalo	New York	C & S Engineers, Inc./Ryan-Biggs Associates
Beaver Creek Clean River Project Phase V Beaver Creek Satellite Treatment Facility	Albany	New York	CHA Consulting, Inc.
Wards Island Settling System Rehabilitation	New York	New York	City of New York Department of Environmental Protection (NYCDEP)
Above Ground Water Quality Monitoring Station	Bronx	New York	NYCDEP
Chemical Addition Facility at Ashokan Reservoir-Structure and Equipment, Upstate New York	Kingston	New York	NYCDEP
Level 1 Step Feed BNR Upgrade, Coney Island Wastewater Treatment Plant	Brooklyn	New York	NYCDEP
Shoreline Stabilization for Turbidity Control	White Plains	New York	NYCDEP
Douglaston Water Pumping Station - Electrical Distribution System Upgrade	Queens	New York	NYCDEP
Fad Related Stormwater Control - Drewville Road and Maple Avenue Sites	Brewster	New York	NYCDEP
Catskill Aqueduct Erosion Restoration, Millwood and Lake Street Sites	Armonk	New York	NYCDEP
BMP-37 Improvements	Flushing	New York	NYCDEP
Kensico Reservoir BMP Facilities (Repairs)	Valhalla	New York	NYCDEP
Chemical Addition Facility at the Pleasantville Alum Plant - Electrical	New York	New York	NYCDEP
Prospect Expressway Station (Reconstruction)	Brooklyn	New York	NYCDEP
Power Distribution Improvements at the Bowery Bay Wastewater Treatment Plant	Astoria	New York	NYCDEP
Wetland and Open Water Mitigation for the Former Armonk Bowling Alley Site	New York	New York	NYCDEP
Hillview Dam Seepage Control and Slope Stability at the Hillview Reservoir	Yonkers	New York	NYCDEP

Landscaping and Miscellaneous Site Work, Tallman Island WTP	Flushing	New York	NYCDEP
Hannah Street Pumping Station Upgrade	Staten Island	New York	NYCDEP
Reconstruction and Improvements at Throgs Neck Waste Water Treatment Plant (WWTP) - Throgs Neck Pumping Station	New York	New York	NYCDEP
Borden Avenue Pump Station Upgrade	New York	New York	NYCDEP
Gowanus Canal	New York	New York	NYCDEP
Combined Water System Improvements Phase 2 (Bolivar Water Treatment Plant)	Richburg/Bolivar	New York	Clark Patterson Lee Associates
Pump Station Roof Replacement	Buffalo	New York	Clark Patterson Lee Associates
Village of Bolivar/ Village of Richburg Combined Water System Improvements, Phase III	Bolivar	New York	Clark Patterson Lee Associates
Thompson Park Pool and ADA Accessibility	Derby	New York	Clark Patterson Lee Associates
Oatka Creek Dam Improvements	Le Roy	New York	Clark Patterson Lee Associates
West Valley Water District – Distribution System	West Valley	New York	Clark Patterson Lee Associates
2018 Sanitary Sewer Rehabilitation Phase 5	West Seneca	New York	Clark Patterson Lee Associates
Three Well Houses - Water Supply System	Allegany	New York	Clark Patterson Lee Associates
Belson Creek Dam Restoration	Ripley	New York	Clark Patterson Lee Associates
Akron Wastewater Treatment Facility Improvements	Akron	New York	Clark Patterson Lee Associates
Wastewater Treatment Facility Improvements	Warsaw	New York	Clark Patterson Lee Associates
Wastewater Treatment Plant Upgrades - Phase 2	Lakeville	New York	Clark Patterson Lee Associates
Town Highway Garage/Town Hall Pole Building Foundations Project	Wellsville	New York	Clark Patterson Lee Associates
Metro WWTP Bypass Treatment (Improvements)	Syracuse	New York	CRA Infrastructure & Engineering Inc.
Cairo Sewage Pump Station	Cairo	New York	Delaware Engineering
Shoshone Pool Renovations	Buffalo	New York	DiDonato Associates
Phase II - Pool Reconstruction At P.S. 94: West Hertel Academy	Buffalo	New York	DiDonato Associates
BPS Pool Renovation Phase II - South Park High School	Buffalo	New York	DiDonato Associates
WTP Residuals Management Improvements (REBID)	Binghamton	New York	GHD Consulting Services, Inc.
WWTP Mechanical Bar Screen (Improvements)	North Tonawanda	New York	GHD Consulting Services, Inc.
Electrical and Scada Upgrades to Lift Stations	Batavia	New York	GHD Consulting Services, Inc.
Hauppauge Waste Water Treatment Facility	Hauppauge	New York	H2M

County Jail - Offsite Utilities Phase 2	Monticello	New York	LaBella Associates, D.P.C.
Sullivan County Jail - Offsite Utilities, Site Construction and Offsite Utilities, General Construction	Harris	New York	LaBella Associates, D.P.C.
Wastewater Treatment Plant & Collection System Improvements	Corinth	New York	Laberge Group/Ryan-Biggs Associates
Wastewater System Improvements	Greene	New York	Larson Design Group
Wastewater Treatment Plant Facility (Expansion)	Nichols	New York	Larson Design Group
Intermediate Pump Station	Machias	New York	MDA Engineers
Wastewater Collection & Treatment Facility upgrade - PH 1	Oakfield	New York	Mountain Engineering PLLC
Water District No. 5 Contract No. 2 - Water Storage Tank	Attica	New York	Mountain Engineering, PLLC
Chatham Village Wastewater Treatment Plant	Chatham	New York	Patrick J. Pendergast, PE
SUNY Dairy Complex Digester(Rehabilitation)	Morrisville	New York	Ryan-Biggs Associates
Pier 97 Structural Concrete	New York	New York	Thornton Tomasetti
Washington County Sewer District No. 2 Concrete Improvements	Fort Edward	New York	Washington County
Village of Westfield Water Pollution Control Facility Upgrade	Westfield	New York	Wendel Companies
Ferric Chloride System Replacement	North Tonawanda	New York	Wendel Companies
Water Pollution Control Facility Upgrade Project Phase 2	Westfield	New York	Wendel Companies
Water Pollution Control Facility UV Disinfection System	Albion	New York	Wendel Companies
Wastewater Treatment Plant Phase I	North Tonawanda	New York	Wendel Companies
Waste Water Treatment Plant (WWTP) Phase 2 Upgrades	Medina	New York	Wendel Companies
Water Treatment Plant Improvements	Niagara Falls	New York	Wendel Duchscherer Architects & Engineers
Well Site No. 5 Filtration System	Horseheads	New York	Wendel Duchscherer Architects & Engineers, PC
WTP Improvements/Chemical Containment	Niagara Falls	New York	Wendel Duchscherer Architects & Engineers, PC
City of Dunkirk Water Pollution Control Facility (Upgrade)	Dunkirk	New York	Wendel Duchscherer Architects & Engineers, PC
Hillsborough Wastewater Treatment Plant	Hillsborough	North Carolina	Hazen & Sawyer
E.M. Johnson Water Treatment Plant Flocculation and Sedimentation Basins 1 Through 4 Modifications	Raleigh	North Carolina	Hazen and Sawyer
Johnston County 210 Wastewater Treatment Facility	Smithfield	North Carolina	Hazen and Sawyer
West Charlotte High School (Swimming Pool)	Charlotte	North Carolina	Water Technology, Inc. (LS3P)
Buckeye Lake Water Treatment Plant Replacement	Beech Mountain	North Carolina	West Consultants, PLLC

Wastewater Treatment Plant (Improvements)	Elkin	North Carolina	West Consultants, PLLC
Chemours Dam Mitigation	Wilmington	North Carolina	
Fargo Membrane Water Treatment & Improvements	Fargo	North Dakota	Advanced Engineering & Environmental Services Inc. (AE2S)
WTP Filtration, Residuals Mgt, & Chemical Feed (Improvement)	Grafton	North Dakota	AE2S
WTP, Concentrate & Transmission Pipeline (Improvements)	Thompson	North Dakota	AE2S
Mandan Water Intake Pumping Station	Mandan	North Dakota	AE2S
WAWSP Williston Regional Water Treatment Plant Phase 3	Williston	North Dakota	AE2S
Sanitary Sewer Force Main & Incidentals	Fargo	North Dakota	City of Fargo
NAWS Lansford Reservoir and Booster Pump Station	Bismarck	North Dakota	Houston Engineering Inc.
NAWS Biota Water Treatment Plant Phase I	Max	North Dakota	Houston Engineering Inc.
NAWS Contract 5-1A South Prairie Reservoir and Control Structure	Minot	North Dakota	Houston Engineering Inc.
New Carlisle Wastewater Treatment Plant	New Carlisle	Ohio	Burgess & Niple, Inc.
Wadsworth WWTP Chemical Feed System	Wadsworth	Ohio	Burgess & Niple, Inc.
Shamrock Business Center Sanitary Sewer & Pump Station	Mentor	Ohio	Burgess & Niple, Inc.
Heath Franklin Ave Water Main & Booster Station	Heath	Ohio	Burgess & Niple, Inc.
Forest Drive Waterline	Lake County	Ohio	Burgess & Niple, Inc.
Phase I Water Treatment Plant Improvements	Windham	Ohio	Burgess & Niple, Inc.
Wastewater Treatment Plant (Improvements)	Newport	Ohio	Burgess & Niple, Inc.
Wastewater Treatment Plant UV Disinfection Improvements	Bethesda	Ohio	Burgess & Niple, Inc.
Blueprint Waterline Initiative-Helsely-Fusselman Waterline	Warren	Ohio	Burgess & Niple, Inc.
Aurora Shores Wastewater Treatment Plant Abandonment	Aurora	Ohio	Burgess & Niple, Inc.
Main Outfall Sewer Cap	Akron	Ohio	City of Akron Engineering Bureau
CSO Retention Tank No. 2 (Modification)	Akron	Ohio	City of Akron Engineering Bureau
CSO Ohio Canal Interceptor Tunnel	Akron	Ohio	City of Akron Engineering Bureau
Water Reclamation Facility Biocept Improvements	Akron	Ohio	City of Akron Engineering Bureau
Primary Settling Tank (Rehabilitation)	Ashtabula	Ohio	City of Ashtabula
East 185th Street and Marcella Road Relief Sewer Phase 1	Cleveland	Ohio	City of Cleveland
Construction of a New Biological Nutrient Reduction System	Akron	Ohio	County of Summit
West Lafayette Wastewater Treatment Plant	West Lafayette	Ohio	Diversified Engineering Incorporated

Blacklick Creek Sanitary Interceptor Sewer	Columbus	Ohio	EMH&T
Water Pollution Control Plant UV Light Disinfection (Improvements)	Ashtabula	Ohio	GPD Group
Russell Park Waste Water Treatment Plant	Novelty	Ohio	GPD Group
Kendall - Cheshire Regulator and Flood Relief	Shaker Heights	Ohio	GPD Group
Wastewater Treatment Plant Improvements	Campbell	Ohio	GPD Group
Beachwood Boulevard Storm Sewer Improvements	Beachwood	Ohio	GPD Group
Underground Vaults/Mechanical	Akron	Ohio	GPD Group
Mud Run Pump Station & Storage Basin	Akron	Ohio	Hazen & Sawyer
Meander Waste Water Treatment Plant Tank Rehabilitation Improvement	Mineral Ridge	Ohio	MS Consultants
Courthouse Fountain Refurbishment	Warren	Ohio	MS Consultants
Pickaway Correctional Institution (PCI) WWTP Wastewater Renovations	Orient	Ohio	MS Consultants
Sanitary Sewer Improvements - Kanawha Rosslyn Sanitary Sewer System	Columbus	Ohio	MS Consultants, Inc.
Westerly Storage Tunnel (NEORS)	Cleveland	Ohio	NEORS/Mott MacDonald/Stantec (MWH)
Westerly Chemically Enhanced High Rate Treatment Project	Cleveland	Ohio	Northeast Ohio Regional Sewer District/Hazen and Sawyer
Cleveland FSMF-Morgana Run Storm Sewer	Cleveland	Ohio	Ohio Department of Transportation (ODOT)
Wastewater Treatment Plant (Improvements)	Ashley	Ohio	OHM Advisors
Marlboro Township Sewage Collection & Treatment System	Marlboro	Ohio	Stark County Sanitary Engineering Department
Lick Run Valley Conveyance System	Cincinnati	Ohio	Strand Associates
Mingo Junction CSO Separation	Mingo Junction	Ohio	The Thrasher Group
Comfort Station Construction - Cuyahoga Valley National Park	Brecksville	Ohio	US National Park Service (NPS) - Ohio MABO
Newcastle WWTP Improvements	Newcastle	Oklahoma	Wall Engineering
Waterline Extension at Kingfisher Justice Center	Kingfisher	Oklahoma	AIP Architects In Partnership
Arcadia Lake Water Treatment Expansion and Improvement	Edmond	Oklahoma	Carollo Engineers, Inc.
Arcadia Lake Water Treatment Plant (ALWTP) Residuals Handling and Plant Improvements	Arcadia	Oklahoma	Carollo Engineers, Inc.
Coffee Creek Water Resource Recovery Facility Expansion	Edmond	Oklahoma	Carollo Engineers, Inc.
Lift Station and Force Main Phase 2	Edmond	Oklahoma	City of Edmond -Public Works Authority

Ketch Lake Dam and Upper Canyon Dam Repair	Fort Sill	Oklahoma	Department of the Army
Chisholm Creek & Spring Creek Lift Station (Improvements)	Edmond	Oklahoma	Freese & Nichols, Inc.
Spring Creek Lift Station (Improvements)	Edmond	Oklahoma	Freese & Nichols, Inc.
Multipurpose Pond, Chesapeake Energy Campus	Oklahoma City	Oklahoma	Johnson & Associates
Low Lift Pump Station Improvements at the Draper Water Treatment Plant	Guthrie	Oklahoma	Myers Engineering
Regional Wastewater Treatment Plant Improvements	Sapulpa	Oklahoma	Tetra Tech
First National Apartments/Swimming Pool	Oklahoma City	Oklahoma	Walter P. Moore & Associates
Toledo Phase 2 Water System	Toledo	Oregon	Civil West Engineering Services
Wastewater Treatment Plant Upgrades	Myrtle Point	Oregon	Civil West Engineering Services
Pump Station and Force Main Improvements	Gleneden Beach	Oregon	Harper Houf Peterson Righellis (HHPR) Inc.
Juniper Swim and Fitness Indoor Pool Renovation	Bend	Oregon	Miller Consulting Engineers
Emerald Park Wading Pool Expansion	Eugene	Oregon	Robertson Sherwood Architects PC
Chambersburg Wastewater Treatment Plant	Chambersburg	Pennsylvania	AECOM
Harrisburg Authority Advanced Wastewater Treatment Facility	Harrisburg	Pennsylvania	AECOM
New Castle Sanitation Authority Wastewater Treatment Plant Upgrades	New Castle	Pennsylvania	AECOM
Water Treatment Plant/Baden Raw Water Intake Facility (Beaver County Water Treatment Plant)	Sewickley	Pennsylvania	Bankson Engineers
Campus Plaza & Fountain Project Phase I	West Chester	Pennsylvania	Burns Engineering, Inc.
AWWTP DO Control & BNR System (Improvements)	Lancaster	Pennsylvania	CDM Smith
Lower Bucks County LBCJMA Sedimentation Basin	Bristol	Pennsylvania	CET Engineering Services, Inc.
Quarryville Borough Authority WWTP Contract 3	New Providence	Pennsylvania	CET Engineering Services, Inc.
Burnham Wastewater Treatment Plant	Burnham	Pennsylvania	CET Engineering Services, Inc.
Calvary Road Area Pump Station (Upgrade)	Carlisle	Pennsylvania	CET/GHD
WCU President's Walk - Fountain	West Chester	Pennsylvania	Chester Valley Engineers
WWTP Upgrades	Bradford	Pennsylvania	Gannett Fleming, Inc.
Von Storch Outfall #11 Combined Sewer Outflow Facility 1	Scranton	Pennsylvania	GHD Inc.
Mini-Basin Sanitary Sewer (Replacement) [Lower Paxton Mini Basin Bc-4A, Bc-4B & Bc-4C Sanitary Sewer]	Lower Paxton	Pennsylvania	GHD Inc.
SMS: Emergency Repairs to Wastewater Collection system - 2016	Harrisburg	Pennsylvania	GHD Inc.

Mini-Basin PC-4A Sanitary Sewer Replacement	Harrisburg	Pennsylvania	GHD Inc.
2021 Sanitary Sewer Improvements	Harrisburg	Pennsylvania	GHD Inc.
Maintenance and Emergency Repairs to the Wastewater and Stormwater Collection Systems - 2021	Harrisburg	Pennsylvania	GHD Inc.
Mini Basins BC-7A, BC-7B, BC-7C, BC-7D, BC-8C, and BC-8D Sewer Improvements	Lower Paxton	Pennsylvania	GHD Inc.
Columbia Road Sanitary Sewer Project	Enola	Pennsylvania	GHD Inc.
Darlington Treatment Plant	Ligonier Township	Pennsylvania	Gibson Thomas Engineers Co., Inc.
Long Term Control Ph1 - WWTP Equalization Tank	Latrobe	Pennsylvania	Gibson Thomas Engineers Co., Inc.
Mansfield University Water Treatment Plant Phase 1	Mansfield	Pennsylvania	Gwin Dobson & Foreman Inc.
Nixon-Kocher Water Treatment Facility	State College	Pennsylvania	Gwin Dobson & Foreman Inc.
PAAW Clarion WWTP - Disinfection, Aeration and Alkalinity Improvements	Monroe Township	Pennsylvania	Gwin Dobson & Foreman Inc.
Water Treatment Facility Improvement	Johnsonburg	Pennsylvania	Gwin Dobson & Foreman Inc.
Slippery Rock Water Treatment Plant	Slippery Rock	Pennsylvania	Herbert, Rowland & Grubic, Inc.
2018 Lower Paxton Township Drainage Improvements	Harrisburg	Pennsylvania	Herbert, Rowland & Grubic, Inc.
South Queen Street Pump Station and Piney Creek Interceptor Replacement, SS18-1: Sewer and Force Main Replacement	Littlestown	Pennsylvania	Herbert, Rowland & Grubic, Inc.
Cupola Pump Station Replacement	Honey Brook	Pennsylvania	Herbert, Rowland & Grubic, Inc.
Wastewater Treatment Plant Upgrade	Newport	Pennsylvania	Larson Design Group, Inc.
Gregg Township Municipal Authority Chemical Feed Facility	Allenwood	Pennsylvania	Larson Design Group, Inc.
Rehabilitation of Concrete SBR Tanks 3 and 4	Allenwood	Pennsylvania	Larson Design Group, Inc.
Wastewater Treatment Plant Upgrades	New Kensington	Pennsylvania	Mott MacDonald
Stroudsburg Wastewater Treatment Plant	Stroudsburg	Pennsylvania	Pennonni Associates
Scranton Wastewater Treatment Plant	Scranton	Pennsylvania	Pennonni Associates
Falling Spring Run Bridge-A	Chambersburg	Pennsylvania	Pennsylvania Department of Transportation
Dauphin County Bridge Bundle South Project	Hummelstown	Pennsylvania	Pennsylvania Department of Transportation
Plant Effluent Ozone Disinfection	State College	Pennsylvania	Providence Engineering Corporation
PSU Water Treatment Plant Upgrade	State College	Pennsylvania	Skanska USA Building Inc.
Lyons Borough WWTP Expansion	Lyon Station	Pennsylvania	SSM Group
Coplay Creek Interceptor Relocation	Lehigh County	Pennsylvania	SSM Group

Borough of Kutztown 2012 WWTP Improvements	Kutztown	Pennsylvania	SSM Group
South Fredericksburg Sanitary Sewer	Fredericksburg	Pennsylvania	Steckbeck Engineering Associates
Hornerstown, Industrial Park Interceptor Rehabilitation and Stormwater Separation	Johnstown	Pennsylvania	The EADS Group Inc.
8th Ward Sanitary – Storm Water Separation	Johnstown	Pennsylvania	The EADS Group Inc.
Moxham Sanitary/Storm Sewer Separation	Johnstown	Pennsylvania	The EADS Group Inc.
Freedom Avenue and Winter Street Storm Sewer Replacement	Johnstown	Pennsylvania	The EADS Group Inc.
2021 Lower Paxton Township Paving Project	Harrisburg	Pennsylvania	Township of Lower Paxton
Wastewater Treatment Plant (Upgrade)	Canton	Pennsylvania	Uni-Tec Consulting Engineers, Inc.
New East Headworks	Pittsburgh	Pennsylvania	Whitman Requardt & Associates
Treatment Plant Phosphorous Removal (Upgrades)	Warwick	Rhode Island	AECOM
Burrillville WWTP Phosphorous and Copper	Burrillville	Rhode Island	James J. Geremia & Associates, Inc.
Mid Park Marine Education Recreational Facilities at Fort Adams State Park	Newport	Rhode Island	Newport Architecture, LLC.
Wastewater Treatment Plant Expansion and Improvements	Summerville	South Carolina	Hazen and Sawyer
Holiday Inn Club Vacations	Myrtle Beach	South Carolina	Huitt-Zollars, Inc.
Chapin Wastewater Treatment Facility (Expansion)	Chapin	South Carolina	Hussey Gay Bell & DeYoung
James Island County Park Family Aquatic Center	North Charleston	South Carolina	Water Technology, Inc.
Canton Community Swimming Pool	Canton	South Dakota	Burbach Aquatics
Water Reclamation Facility (Digester Gas Conditioning System)	Sioux Falls	South Dakota	Short Elliott Hendrickson Inc. (SEH)
Foundation Park Lift Station	Sioux Falls	South Dakota	SEH
Main Pump Station Replacement	Sioux Falls	South Dakota	SEH
Pump Station	Yankton	South Dakota	Bartlett & West, Inc.
Jackson Springs Wastewater Treatment Plant	Rapid City	South Dakota	Burns & McDonnell
Brandon Road Lift Station Parallel Force Main	Sioux Falls	South Dakota	HDR Inc.
Harisburg Water Reclamation Facility	Sioux Falls	South Dakota	Stockwell Engineers, Inc.
Huether Family Aquatics Center	Yankton	South Dakota	Stockwell Engineers, Inc.
Precast Concrete Manholes	Sevierville	Tennessee	City of Sevierville
Moccasin Bend WWTP Effluent Disinfection System	Chattanooga	Tennessee	Black & Veatch
Kuwahee Wastewater Treatment Plant Primary Clarifier Improvements	Knoxville	Tennessee	CDM Smith
Grading, Drainage, Construction of Retaining Walls, Signals and Paving on SR 99	Murfreesboro	Tennessee	Gresham Smith & Partners / TDOT

TTU Student Recreation and Fitness Facility/Pool	Cookeville	Tennessee	Hart Freeland Roberts Inc.
SSO & Clifty Creek Basin Phase 2 Sewer System Rehab	Paris	Tennessee	Jacobs Engineering Group, Inc.
Sewer System Rehabilitation - Phase 1 Johnson Park Basin	Paris	Tennessee	Jacobs Engineering Group, Inc.
Water Treatment Plant Improvements - Phase 2 Filter Building	Paris	Tennessee	Jacobs Engineering Group, Inc.
WWTP Lagoon Improvements and Site Piping Phase 1B	Paris	Tennessee	Jacobs Engineering Group, Inc.
Sewer System Improvements - Jones Bend Creek Sewer Replacement	Paris	Tennessee	Jacobs Engineering Group, Inc.
Loudon Water Treatment Plant	Loudon	Tennessee	Jordan, Jones & Goulding / Jacobs
Loudon Water Treatment Plant 20 MGD Division 2	Loudon	Tennessee	Jordan, Jones & Goulding / Jacobs
North Clarksville Water Treatment Plant	Clarksville	Tennessee	Smith, Seckman, Reid (SSR), Inc.
Curd Branch and Watson Branch Interceptor Sewer	Franklin	Tennessee	SSR
Ladd Park Interceptor Sewer	Franklin	Tennessee	SSR
Grading, Drainage, Construction of Bridges, Retaining Walls and Paving on S.R. 397	Franklin	Tennessee	Tennessee Department of Transportation
D. B. Wood Road Embankment Improvements	Georgetown	Texas	City of Georgetown
Forest Creek WWTP 1.0 MGD Expansion	Pflugerville	Texas	S.D. Kallman Engineers
Humble Middle School 11	Humble	Texas	PBK Houston
North Harris County State Highway 249 Regional Pump Station	Houston	Texas	AECOM
Equinox Fitness Center/Pool	Plano	Texas	Architectural Engineers Collaborative
Fort Bend MUD 25 - Red Gully Storm Water Outfall Repairs	Richmond	Texas	Ardurra Group
Falconwing Park Pool & Pump House Renovation	The Woodlands	Texas	Burditt Consultants
Oscar Johnson Community Center	Conroe	Texas	Burditt Consultants
Wastewater Treatment Plant Expansion Phase 1	Kyle	Texas	Burgess & Niple, Inc.
Lawson Road Lift Station In-Line Flow Storage Basin	Dallas	Texas	Burgess & Niple, Inc.
Project Greenfield Building S05 (Gas Pits)	Houston	Texas	Cardno Haynes Whaley, Engineering & Environmental Services Division / Gensler
Roberto R. Bustamante WWTP Headworks Improvements	El Paso	Texas	Carollo Engineers
South Mesquite Creek Regional Wastewater Treatment Plant Solids Handling Improvements	Mesquite	Texas	Carollo Engineers, Inc.
Odessa Water Treatment Plant Rehabilitation and Miscellaneous Upgrades	Odessa	Texas	Carollo Engineers, Inc.
Elm Fork Water Treatment Plant Filter Complex	Carrollton	Texas	City of Dallas - Water Utilities

Wastewater Treatment Plant Phase III	Katy	Texas	Dudley Engineering
Eastland Sewer Infrastructure Improvements	Eastland	Texas	Enprotec / Hibbs & Todd Inc.
Utility Tunnel Repairs	Wichita Falls	Texas	GTO Engineering Services
Utility Tunnel Repair Project - Tunnel B	Wichita Falls	Texas	GTO Engineering Services Inc.
Maxwell Creek Pump Station Improvements	Sachse	Texas	Hazen and Sawyer
North Texas Municipal Water District (NTMWD) McKinney Lift Station Improvements	McKinney	Texas	HDR Architecture, Inc.
New Natatorium	Garland	Texas	Huckabee & Associates, Inc.
Jackson Middle School Aquatic Center	Forney	Texas	Magee Architects, LLP.
UT Applied Research Laboratories Office Bldg. & Central Plant	Austin	Texas	Martinez Moore Engineers
Elm Fork Water Treatment Plant Filter Complex - Phase I	Carrollton	Texas	Pacheo Koch
John Hargrove Environmental Complex Water Reclamation Facility Expansion	Pearland	Texas	PGAL
UTSA Recreation Center Pool Facilities	San Antonio	Texas	Rogers Moore Engineers
Instructional Support Center Floodproofing	Houston	Texas	Walter P. Moore and Associates, Inc.
Wastewater Lagoon Upgrade	Pecos	Texas	West Texas Consultants, Inc.
Torrey Town Tank Project	Torrey	Utah	Ensign Engineering
Marshall N. White Center Demolition and Rebuild	Ogden	Utah	VCBO Architecture
Circleville Town Water Tank	Circleville	Utah	Ensign Engineering
Lagoon Headworks Reconstruction Project	Hildale City	Utah	Sunrise Engineering
Pine Creek Ranch Water Improvements	Mount Pleasant	Utah	Ensign Engineering
CC08E Dewatering Building Improvements	SLC	Utah	Brown and Caldwell
Univ of Utah HPER Central Chiller Plant - HVAC	Salt Lake City	Utah	BHB Structural Engineers
Spanish Fork Provo Reservoir Canal Pipeline	Orem	Utah	Central Utah Water Conservancy District
4500 South Waterline Improvements	Murray	Utah	CRS Engineers (Caldwell Richards Sorenson)
Cyprus High School Replacement	Magna	Utah	Elevate Engineering
Mona City 1M Gallon Water Storage Tank	Mona	Utah	Jones and Demille Engineering
The New Cyprus High School (Swimming Pool)	Magna	Utah	Naylor Wentworth Lund Architects
Nephi Culinary Water Improvements - 2018	Nephi	Utah	Sunrise Engineering
Jay Peak Resort Hotel 2 and Waterpark	Jay	Vermont	Ramaker & Associates
Little Falls Run WWTF Upgrade	Fredericksburg	Virginia	Stafford County

Virginia Aquarium Marine Animal Conservation Center	Virginia Beach	Virginia	NRW Engineering, P.C.
Digester Upgrades and Rehabilitation	Roanoke	Virginia	Rummel, Klepper & Kahl (RK&K)
South Rivanna Water Treatment Plants Rehabilitation and Expansion	Charlottesville	Virginia	Short Elliott Hendrickson Inc. (SEH)
Crozet Water Treatment Plant - Expansion and Rehabilitation	Charlottesville	Virginia	SEH
Virginia Aquarium Marine Animal Conservation Center	Virginia Beach	Virginia	Waller, Todd & Sadler Architects, Inc.
Strasburg WWTP & Public Works Department	Strasburg	Virginia	Wendel Companies
Skookum Fish Hatchery	Acme	Washington	Aquacare Environmental Inc.
Oak Harbor Clean Water Facility - Windjammer Park	Oak Harbor	Washington	Carollo Engineers, Inc.
Downtown Stormwater Treatment Project	Maryville	Washington	City of Marysville Public Works Department
Marshall Community Center (MCC) Pool Upgrades and Mechanical Replacement	Vancouver	Washington	City of Vancouver
2020 Sanitary Sewer Pump Station 33B	Federal Way	Washington	Lakehaven Water and Sewer District/Carollo Engineers, Inc.
Gorst Abatement Pond Improvements	Bremerton	Washington	MAP Ltd.
Prepackaged Sewer Lift Station	Arlington	Washington	Oldcastle Precast
UV Disinfection Upgrades	Olympia	Washington	Parametrix, Inc.
Kirkland Pump Station	Kirkland	Washington	Tetra Tech
Soos Creek Water & Sewer Dist lift Station 11B	Covington	Washington	Tetra Tech/KCM Inc.
Aquatic Center at MLK JR Park	Yakima	Washington	NAC Architecture
Contract No. 2 - Wastewater Collection System Extension Project	Cottageville	West Virginia	Boyles & Hildreth Consulting Engineers
Combined Sewer Separation (Phase 1A)	Benwood	West Virginia	Burgess & Niple, Inc.
Porters Branch and Spring Branch Sanitary Sewer Improvements, 2018 and Callie Road and Anderson Heights Sanitary Sewer Improvements, 2018	Charleston	West Virginia	Burgess & Niple, Inc.
Wastewater Treatment Plant Improvements, Handrail Replacement	McConnelsville	West Virginia	Burgess & Niple, Inc.
Sewer System Rehabilitation	Charleston	West Virginia	Burgess & Niple, Inc.
Danner Hollow and Mountain Road Lift Station Improvement	Charleston	West Virginia	Burgess & Niple, Inc.
Philippi & Tygart Glen Wastewater Treatment Plant (Improvements)	Philippi	West Virginia	Burgess & Niple, Inc.
Callie Road and Anderson Heights Sanitary Sewer Improvements	Charleston	West Virginia	Burgess & Niple, Inc.
Charles Pointe EODD Offsite Infrastructure Project	Bridgeport	West Virginia	CEC Inc.
Wastewater Treatment Plant and System	Friendly	West Virginia	Cerrone Associates, Inc.
Lakin & Camp Conley Area Sewer	Lakin	West Virginia	Cerrone Associates, Inc.

Claywood Park PSD Newark WWTP	Newark	West Virginia	Cerrone Associates, Inc.
Sewer System Improvements	Wheeling	West Virginia	Cerrone Associates, Inc.
Belington Wastewater Treatment Plant	Belington	West Virginia	Chapman Technical Group
Wastewater Treatment Facility (Improvements)	Ronceverte	West Virginia	Dunn Engineers, Inc.
Coalwood Wastewater Treatment Plant - Contract 2	Welch	West Virginia	EL Robinson Engineering Co.
Elkhorn Water System & Plant Phase 1	Northfork	West Virginia	EL Robinson Engineering Co.
Moorefield Water Treatment Facility Upgrade and Expansion	Moorefield	West Virginia	Gwin Dobson & Foreman Inc. Consulting Engineers
Water Treatment Facility Improvements	Harpers Ferry	West Virginia	Gwin Dobson & Foreman Inc. Consulting Engineers
Roadway Drainage Mitigation	Mercer County	West Virginia	HNTB Corporation
Johnson Branch/North Page Sewer Extension	Kincaid	West Virginia	Pentree Inc.
Berkeley County PSD North Area Sewer Plant	Martinsburg	West Virginia	Pentree Inc./The Thrasher Group
Berkeley County PSD Opequon Hedgeville Sewer Plant	Martinsburg	West Virginia	Pentree Inc./The Thrasher Group
Baker Heights Wastewater Treatment Plant Bay (Upgrade)	Martinsburg	West Virginia	Pentree Inc./The Thrasher Group
Berkeley County PSD Contract 2 Inwood WWTP	Inwood	West Virginia	Pentree Inc./The Thrasher Group
Buffalo Wastewater Treatment Plant Sanitary Sewer Line	Buffalo	West Virginia	Randolph Engineering
Sanitary Sewer Line Construction	Hurricane	West Virginia	Randolph Engineering
Frankfort Public Service District Various Sewer	Wiley Ford	West Virginia	Rummel Klepper & Kahl (RK&K)
Frankfort Public Service District, Sunrise Heights, Sherwood Acres, Knobley Estates, and Moreland Mobile Home Park Sewer Replacement Project	Wiley Ford	West Virginia	RK&K
Mineral County Commission Patterson Creek Ridge Tower	Keyser	West Virginia	RK&K
Northern Mineral Co Regional Sewer System PH 2	Wiley Ford	West Virginia	RK&K
Charles Town Water Treatment Plant	Charles Town	West Virginia	RK&K
Big Sandy Water System Contracts 1 & 2	War	West Virginia	Stafford Consultants
Ripley Wastewater Collection (Improvements)	Ripley	West Virginia	The Thrasher Group
Twilight Drive Sewage Force Main Relocation	Charleston	West Virginia	The Thrasher Group
Sewer Improvements Volume A – Volume B	Charleston	West Virginia	The Thrasher Group
Long Term Control Plan Phase II - Sanitary Sewer Improvements	Rivesville	West Virginia	The Thrasher Group
Sanitary Sewer Rehabilitation and Lift Station	Milton	West Virginia	The Thrasher Group

Miscellaneous Construction - D7 Headquarters Sewer Line Extension	Weston	West Virginia	West Virginia Department of Transportation
Wisconsin Rapids Water Treatment Plant Wall Repairs	Wisconsin Rapids	Wisconsin	Short Elliott Hendrickson Inc. (SEH)
Water Treatment Plant No. 10 - City of Hudson	Hudson	Wisconsin	SEH
Well 4 and 5 Water Treatment Plants	Sussex	Wisconsin	SEH
Monroe Wastewater Treatment Plant	Monroe	Wisconsin	AECOM
Watertown Central Water Treatment Plant	Johnson Creek	Wisconsin	Applied Technologies, Inc.
North Chicago Lift Station Improvements	South Milwaukee	Wisconsin	Applied Technologies, Inc.
Town of Norway Lift Station Number 8 Improvements	Wind Lake	Wisconsin	Applied Technologies, Inc.
South Street Lift Station	East Troy	Wisconsin	Applied Technologies, Inc.
Waupun Wastewater Treatment Plant (WWTP) Upgrade and Advanced Biological Nutrient Recovery (ABNR)	Waupun	Wisconsin	Applied Technologies, Inc.
Leachate Lift Station	Rice Lake	Wisconsin	Applied Technologies, Inc.
Ravine Lift Station Improvements	South Milwaukee	Wisconsin	Applied Technologies, Inc.
Water Treatment Plant (Improvements)	Cumberland	Wisconsin	BDM Consulting Engineers/MSA Professional Services, Inc.
Mondovi Wastewater Treatment Plant	Mondovi	Wisconsin	CBS Squared Inc.
Proposed Wastewater System Improvements	Avoca	Wisconsin	Delta 3 Engineering, Inc.
Proposed Wastewater Treatment Facility Upgrade	Blue River	Wisconsin	Delta 3 Engineering, Inc.
Wastewater Treatment Facility Improvements	Monticello	Wisconsin	Delta 3 Engineering, Inc.
UW-Whitewater Heating Plant Fuel Reliability Upgrade	Whitewater	Wisconsin	DOA Wisconsin
Resurface Privately Owned Vehicles Parking Lot	Wisconsin Rapids	Wisconsin	DOA Wisconsin
Steam Pits 14 Replacement	Stevens Point	Wisconsin	DOA Wisconsin
Gymnasium and Natatorium Replacement	Madison	Wisconsin	DOA Wisconsin
Site Utility Distribution System Replacement	Menomonie	Wisconsin	DOA Wisconsin
Steam Loop Improvements	Union Grove	Wisconsin	DOA Wisconsin
Utility Improvements - Phase 2	Union Grove	Wisconsin	DOA Wisconsin
Site Utility Steam Distribution Replacement	Madison	Wisconsin	DOA Wisconsin
Madison West High School	Madison	Wisconsin	Eppstein Uhen Architects (EUA)
Cummins Stoughton Cell #6 Upgrade	Madison	Wisconsin	Flad Architects
VFW Park Aquatic Facility	De Pere	Wisconsin	GRAEF/Water Technology
Nekoosa Waste Water Treatment Plant	Nekoosa	Wisconsin	MSA Professional Services, Inc.

WWTP Anaerobic Digester System (Improvements)	Tomahawk	Wisconsin	MSA Professional Services, Inc.
Lodi Municipal Swimming Pool Goeres Park	Lodi	Wisconsin	MSA Professional Services, Inc.
Fifield Sanitary District Lift Station	Fifield	Wisconsin	MSA Professional Services, Inc.
Sunset Park Pool/Aquatic Facility	Elkhorn	Wisconsin	MSA Professional Services, Inc.
Wastewater Treatment Facility (Biosolids Dryer System) [Dells Lake Delton Sewerage Commission WWTF Biosolids Dryer]	Lake Delton	Wisconsin	MSA Professional Services, Inc.
R.W Houser YMCA - Warm Pool	Onalaska	Wisconsin	River Architects
Stevens Point Well 11 Water Treatment Plant	Stevens Point	Wisconsin	Short Elliott Hendrickson Inc. (SEH)
Chippewa Riverfront - Phase 2 Improvements	Chippewa Falls	Wisconsin	SEH
Sussex, WI - Well 8 Water Treatment Plant	Sussex	Wisconsin	SEH
Ocean Spray Wastewater Treatment Facility	Tomah	Wisconsin	Stantec
Nine Springs Liquid Processing Improvements Phase I	Madison	Wisconsin	Strand Associates
Site Utility Electrical Distribution System Renovation and Replacement	Madison	Wisconsin	Wisconsin Department Administrative Facilities
John E Alexander-South Wood County YMCA/Gym/Pool (Mall Conv)	Wisconsin Rapids	Wisconsin	Zimmerman Design Group (Harwood Engineering Consultants)
Pavillion Sewer Lagoon	Pavillion	Wyoming	Jim Gorse and Associates
Mike Sedar Pool (Reconstruction)	Casper	Wyoming	Ohlson Lavoie Collaborative OLC
Central Wyoming College Agriculture and Animal Science Center	Riverton	Wyoming	Amundsen Associates