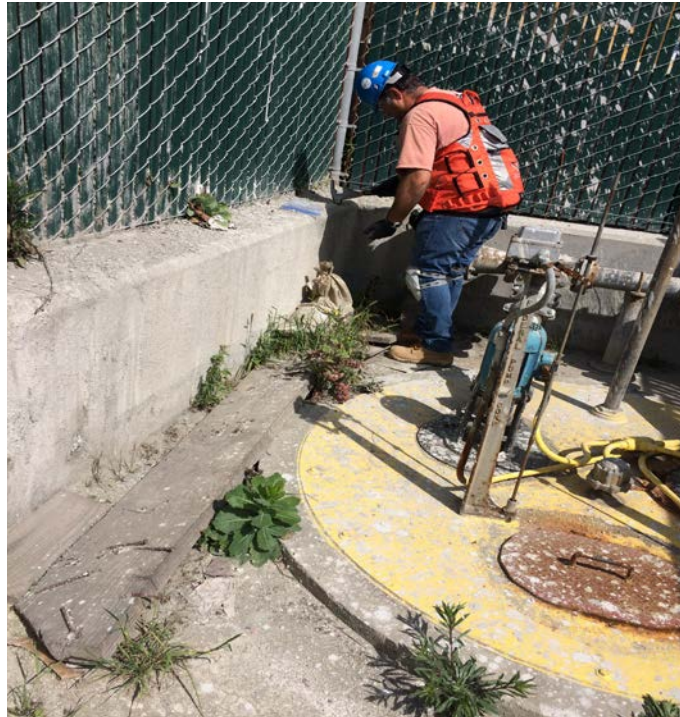


Asbestos Survey Report

Reinforced Concrete Structure
Amador Pump House



Amador Street, San Francisco California

Prepared for

San Francisco Public Works
Project Control Services
Site Assessment and Remediation
City and County of San Francisco
30 Van Ness Avenue
San Francisco, CA 94102

July 15, 2016
ESI Job No.2808

Acknowledgment

On April 26, 2016 EnviroSurvey, Inc. (ESI) performed a limited hazardous material survey for materials (ACMs) throughout the reinforced concrete structure of the Amador Street Pump House suspected to contain asbestos. The pump house is located at Amador Street, San Francisco, California.

The hazardous material survey conducted by ESI is in compliance with NESHAPS and Cal-OSHA regulations pertaining to future demolition of the pump house structure.

The following individuals from EnviroSurvey, Inc. were involved in the survey and assessment of hazardous materials and preparation of this report. Millennium Consulting Associates provided the overall review and recommendations in this Survey Report.



Signature: _____

Date: 07/15/2016

EnviroSurvey, Inc.
Alex Zebarjadian, MS
Cal-OSHA CAC # 93-0928, Expires 04/09/17
CDPH Certified Lead Project Monitor M 1693



Signature: _____

Date: 7/21/16

Millennium Consulting and Associates
Jeremy Malson, CIH, CSP, CAC
ABIH #9823, Exp: 06/01/16
CAC #07-4183





Table of Contents

ACCRONYMS

DEFINITIONS

EXECUTIVE SUMMARY

1.0 INTRODUCTION 2

2.0 PROJECT & BUILDING DESCRIPTION. 2

 2.1 Record Review 3

3.0 ASBESTOS CONTAINING MATERIAL SURVEY 3

 3.1 Asbestos Survey Approach 3

 3.2 Analytical Methodology 4

 3.3 Asbestos Regulatory Overview.....4

 3.4 Asbestos Summary Results..... 4

4.0 CONCLUSION / RECOMMENDATIONS 5

APPENDICES

A. **Photo Documentation, Site Plans, Sample Location Map**

B. **Laboratory Results**



ACRONYMS

AC	<i>Asbestos Containing</i>
ACM	<i>Asbestos-Containing Materials</i>
ACCM	<i>Asbestos-Containing Construction Materials (OSHA designation)</i>
AHERA	<i>Asbestos Hazard Emergency Response Act</i>
AIHA	<i>American Industrial Hygiene Association</i>
ALSF	<i>Analytical Labs of San Francisco</i>
BAAQMD	<i>Bay Area Air Quality Management District</i>
Cal-OSHA	<i>California Occupational Safety and Health Administration</i>
CAC	<i>Certified Cal-OSHA Asbestos Consultant</i>
CARB	<i>California Air Resources Board</i>
CCSF	<i>City and County of San Francisco</i>
CFR	<i>Code of Federal Regulations</i>
CPSC	<i>U.S. Consumer Product Safety Commission</i>
CSO	<i>Contract Service Order</i>
CDPH	<i>California Department of Public Health</i>
CIH	<i>Certified Industrial Hygienist</i>
CSP	<i>Certified Safety Professional</i>
SFPW	<i>San Francisco Public Works</i>
ELD	<i>Environmental Lead Detect, Inc.</i>
ESI	<i>EnviroSurvey, Inc.</i>
EPA	<i>U.S. Environmental Protection Agency</i>
HUD	<i>U.S. Department of Housing and Urban Development</i>
HEPA	<i>High Efficiency Particulate Air (refers to high efficiency air filters)</i>
LCP	<i>Lead Containing Paint (lead content < 5,000 ppm or <0.5%)</i>
LBP	<i>Lead Based Paint (lead content > 5,000 ppm or >0.5%)</i>
NVLAP	<i>National Voluntary Laboratory Accreditation Program</i>
NESHAP	<i>National Emission Hazardous Air Pollutants – EPA Branch</i>
OSHA	<i>Occupation Safety and Health Administration</i>
PACM	<i>Presumed Asbestos Containing Materials</i>
PCBs	<i>Polychlorinated Biphenyls</i>
PCS	<i>Project Control Services – CCSF Public Works</i>
PLM	<i>Polarized Light Microscopy-asbestos bulk sample analysis</i>
RACM	<i>Regulated Asbestos Containing Material</i>
SAR	<i>Site Assessment and Remediation Division – CCSF Public Works</i>
SFPUC	<i>San Francisco Public Utility Commission.</i>
TSI	<i>Thermal System Insulation on pipes/boilers, duct, etc.</i>
%wt	<i>Percent Weight: one of the measurement units for paint chip sampling.</i>

DEFINITIONS

- A. Abatement: Primary work involving the removal, containment, control or treatment of hazardous materials.
- B. Asbestos: A generic name given to a number of naturally occurring hydrated mineral silicates that possess a unique crystalline structure, are incombustible in air, and are separated into fibers. Asbestos includes any material that contains greater than 1 percent by weight any of the asbestiform varieties of chrysotile (serpentine); crocidolite (riebecklite); amosite (cummingtonite-grunerite); anthophyllite; tremolite; and actinolite. For the purpose of determining respiratory protection and worker protection, both the asbestiform and non-asbestiform varieties of the above materials and any of these materials that have been chemically treated or altered shall be considered asbestos.
- C. Asbestos-Containing Material (ACM): Any material which contains more than one percent (>1%) asbestos by weight for the purpose of abatement, waste disposal and fiber controls specified under this contract.
- D. Asbestos Containing Construction Materials (ACCM): Defined by Cal OSHA 8CCR§341.6 as any manufactured construction material which contains more than one tenth of one percent (0.1 %) asbestos by weight.
- E. Asbestos Hazard Emergency Response Act (AHERA): contains some but not all requirements for asbestos training, certification, surveys, and work practices.
- F. Asbestos Regulated Area: An established area where asbestos work is conducted and any adjoining area where debris and waste from such asbestos work may accumulate; and a work area within which airborne concentrations of asbestos exceed, or there is reasonable possibility that may exceed the permissible exposure limit (PEL).
- G. Asbestos-Related Construction Work: Defined by Cal OSHA 8CCR§1529 as construction work that includes but is not limited to the following:
1. Demolition or salvage of structures where asbestos is present;
 2. Removal or encapsulation of materials containing asbestos;
 3. Construction, alteration, repair, maintenance, or renovation of structures, substrates, or portions thereof, that contain asbestos;
 4. Installation of products containing asbestos;
 5. Asbestos spill/emergency cleanup;
 6. Transportation, disposal, storage, containment of and housekeeping activities involving asbestos or products containing asbestos, on the site or location where construction activities are performed;
 7. Excavation that may involve exposure to asbestos as a natural constituent that is not related to asbestos mining and milling activities;
 8. Erection of new electric transmission and distribution lines and equipment, and alteration, conversion and improvement of the existing transmission and distribution lines and equipment; and
 9. Routine facility maintenance.



DEFINITIONS

- H. Generator: The City is the “Generator” as defined in Section 66260.10 of Article 2, Chapter 10, Division 4.5, and Title 22 of the California Code of Regulations (CCR) and in Title 40, Code of Federal Regulations of any hazardous waste, and it will be responsible for such material to the extent required by law.
- I. Hazardous Materials: any material that poses any potential hazard of ignitability, reactivity, corrosion, acute or chronic toxicity. Hazardous materials include toxic materials.
- J. Hazardous Materials Control: Incidental work procedures for control or release of project- related hazardous materials, including containment, enclosure, wetting, controlled renovations and demolition procedures, and removal and disposal.
- K. Hazardous Waste:
1. Waste material, including asbestos, loose and peeling lead-based paints, PCB ballasts, and any other material which requires management, handling, transport, treatment, storage or disposal according to the requirements of the federal Resource Conservation and Recovery Act (RCRA) and associated regulation 42 U.S.C. 6901 et seq. and 40 CFR Part 260 et seq. or the California Hazardous Waste Control Law and associated regulations (Health and Safety Code 25000 et seq. and 22 CCR 66260 et seq.)
 2. References to hazardous material or contaminated material incorporate definitions of hazardous pollutants, hazardous contaminants, hazardous material, hazardous substance, hazardous waste, toxic pollutants and toxic substances applicable in accordance with federal, state, regional and local statutes, laws, regulations and policies.
- L. National Emission Standards for Hazardous Air Pollutants (NESHAP) regulates air emissions of hazardous pollutants including potential air emissions caused from work with asbestos.
- M. Presumed Lead-Based Paint: paint or surface coating affixed to a component in or on a structure, excluding paint or surface coating affixed to a component in or on a residential dwelling constructed on or after January 1, 1978.
- N. Presumed Asbestos Containing Material (PACM) is thermal system insulation and surfacing material found in buildings constructed no later than 1980. PACM can be sampled to confirm whether it is ACM or not.

END OF SECTION

EXECUTIVE SUMMARY

This summary is not to be read as a stand-alone document. The report shall be read in its entirety. The reader must review the detailed information provided in the accompanying text. Any interpretation, use and conclusions resulting from the data contained in this report are the responsibility of the reader.

On April 26, 2016 EnviroSurvey, Inc. (ESI) performed a limited survey for the presence of asbestos containing materials in the concrete structure of the Amador pump house facility located at the Central Concrete yard, Amador Street, San Francisco, California.

The purpose of this survey was to identify the presence and approximate quantities of asbestos, containing materials found in the above ground concrete slab and retaining walls.

ESI's certified inspectors listed below performed the survey and assessment of hazardous materials in compliance with NESHAPS and Cal-OSHA regulations.

Name	Organization	Project Role	Accreditation
<i>Alex Zebarjadian</i>	<i>EnviroSurvey, Inc.</i>	<i>Project Manager</i>	<i>CAC: 93-0928, Exp.: 04-09-17 CDPH M-1693 Exp.: 6-20-17</i>
<i>Mr. Mazyar Hajiaghahi</i>	<i>EnviroSurvey, Inc.</i>	<i>Certified Lead Inspector Certified Asbestos Insp.</i>	<i>CAC # 14-5253: Exp.: 08-13-16 CDPH # I-2754, Exp.: 04-19-2017</i>
<i>Jeremy Malson</i>	<i>Millennium Consulting</i>	<i>Report Review and Consultations</i>	<i>American Board of Industrial Hygienist ABIH# 9823, Expires: 06/01/2021</i>

Asbestos survey of the pump station consisted of collecting and analysis of six (6) bulk samples of the concrete throughout the concrete structure. Based on the analytical results, only one sample of the concrete from the west retaining wall (2808-06) contained chrysotile asbestos at a concentration of 0.25% , as confirmed by PLM (polarized Light Microscopy) and point-count analysis.

Based on the laboratory results, demolition, handling and disposal of the concrete structure from Amador Pump House requires compliance with CAL-OSHA standards (8 CCR-1529). Certified analytical reports of the bulk samples as analyzed by Polarized Light Microscopy) are included in **Appendix B**.

1.0 INTRODUCTION

This report summarizes the results of a limited survey for asbestos containing materials (ACM) of the pump house concrete structure located within the Central concrete plant at Amador Street, San Francisco, California.

The purpose of the survey was to determine the presence of asbestos in the concrete slabs and the retaining walls of the pump house that may be a hazard in the future demolition and re-construction of the pump house and the underground storage tank.

EnviroSurvey, Inc. (ESI) conducted this hazardous materials survey work under the Contract Service Order (CSO), issued by the San Francisco Public Works, Project Control Services (PCS), Site Assessment and Remediation (SAR).

ESI's scope of services consisted of the following:

1. Perform ACM survey of the subject facility area in accordance with the listed criteria in California Occupational Safety and Health Administration (Cal OSHA) standard 8 California Code of Regulations (CCR) 1529 and NESHAPS regulations including the analysis of bulk samples via polarized light microscopy (PLM) methodology. In addition, point-count analysis of concrete samples was performed by the laboratory, as needed to confirm the PLM result.
2. No paint coating was observed on the concrete wall, slabs or platforms. Therefore, no paint chip samples or assessment of lead in concrete was included in the scope of this survey.
3. Provide a written report of the hazardous materials survey including analytical results in tabular form, interpretation of results, sample location map, observations and recommendations.

2.0 PROJECT & BUILDING DESCRIPTION.

The Amador Pump House facility is an open space reinforced concrete structure surrounded by 6 concrete retaining walls and a 6 feet chain link fence, and an entry gate with concrete steps. The facility is approximately 350 ft² in size.

The pump house includes an underground waste water storage tank, located beneath a 12-inch concrete slab, and sealed with a round steel plate. Two pumping units are located on top of the plate are in contiguous operation to pump the waste water into the city sewer system.

The perimeter retaining walls along Amador Street are approximately 8 feet tall with built-in bottom raised surfaces approximately 3 feet wide. The retaining walls along the Central Concrete plant is 3 feet high by 6 " wide and extended to 8 feet by a chain link fence. The concrete structure appears to be intact and in good condition with no sign of deterioration and/or cracks.

Except for the yellow paint on the steel cover, all concrete walls and horizontal surfaces had no paint or any other coatings.

2.1 Record Review

No records pertaining to former site investigations were available to review. The plans and layout of the pump station including thickness of the concrete and the existing dimensions of the underground tank was provided to ESI by a representative from DPW.

The existing site plans along with the location of the bulk samples are provided in the map in Appendix A.

3.0 **ASBESTOS CONTAINING MATERIAL SURVEY**

3.1 Asbestos Survey Approach

EPA guideline 40 CFR, Part 763.86 was used as the basis for sampling procedures.

The asbestos survey included collecting and analyzing of a total of six (6) samples of the concrete from walls, platforms and slabs. Concrete was chipped off to a depth of 1-inch and placed into individual sampling bags. Samples of the concrete were obtained with the aid of hand tools and were cleaned and decontaminated between each sampling event to avoid cross contamination between samples.

A bulk sampling log was created to identify each sample based on the type, location of the suspect material. This log is also used as the chain of custody form. In addition, photos were obtained to document the physical condition of each sampled material and sample locations.

3.2 Analytical Methodology

All six samples were forwarded to Analytical Lab San Francisco (ALSF) for asbestos content analysis of using Polarized Light Microscopy (PLM) and 400 point-count using CARB 435 Method. ALSF is recognized under the National Voluntary Laboratory Accreditation Program for satisfactory compliance with criteria established in Title 15, Part 7 Code of Federal Regulations (CFR) and accredited for bulk asbestos fiber analysis (NVLAP lab code: 101909-0).

PLM analysis was performed by visually observing the bulk sample and preparing slides for microscopic examination and identification. The bulk samples were analyzed for types of asbestos fiber (chrysotile, amosite, crocidolite, anthophyllite, and actinolite / tremolite), and fibrous non-asbestos constituents (mineral wool, paper, etc.).

To confirm the presence/absence of Naturally Occurring Asbestos in concrete aggregates, ESI requested the laboratory to perform 400-point count analysis on three of the random concrete samples, and samples containing less than one percent asbestos (< 1%) reported by PLM analysis.

3.3 Asbestos Regulatory Overview

Asbestos Containing Construction Materials (ACCM) is defined by Cal OSHA 8CCR§341.6 as any manufactured construction material which contains more than one tenth of one percent (>0.1 %) asbestos by weight. The Cal/OSHA Standards (8CCR-1529) requirements would still have to be followed regarding workers' training and licensing requirements (DOSH registrations), if the quantity of ACCM is equal or greater than 100 square feet.

EPA- NESHAPS regulations, locally enforced by the BAAQMD, regulates handling and disposal of non-friable ACM containing more than one percent (> 1%) asbestos. The concrete structure within the Amador Pump House, as sampled and assessed by ESI is not a regulated waste, per NESHAPS standards, and may be disposed of as regular construction debris. .

3.4 Asbestos Summary Results

PLM confirmed the presence of asbestos in one of the six (6) concrete samples at concentrations less than 1 % (< 1%) by weight. Asbestos was found in the form of serpentine aggregates in the perimeter retaining wall, Sample 2808-06, at or above the Cal/OSHA Regulatory limits of 0.1%, as shown on the attached sample location map.

In addition to PLM analysis, three random concrete samples (2808- 2, 2808-3 and 2802-6) were further analyzed by 400 point count method to determine the potential presence of asbestos-containing serpentine aggregate in the concrete. Results confirmed that one sample (2808-6) contains 0.25% asbestos by point count method. No asbestos was found in other five samples submitted to the laboratory for analysis.

Amador Pump Station
Summary Asbestos Sample Results

Sample ID	Sampling Location	Material Description- Type/color	Approximate Quantity ⁽¹⁾	% Asbestos Conc. ⁽²⁾	Point Count Analysis
2808-01	South Retaining wall	Gray concrete with rocks	8'x12'	ND	NA
2808-02	Entry step area	Gray concrete with chicken wire	6'X5'	ND	<0.25%
2808-03	South Platform	Gray concrete with aggregate	3'X12'X3	ND	<0.25%
2808-04	Main floor	Gray Concrete slab	25'X 15	ND	NA
2808-05	Underground tank	Gray concrete circular curb	4'X4'	ND	NA
2808-06	West perimeter wall	Gray concrete with wire mesh	2'X3'X25'	Chrys < 1%	0.25%

CHRY=Chrysotile Asbestos

ND= None Detected

NA= Not Applicable

⁽¹⁾ Quantities must be field verified.

⁽²⁾ Analyzed by PLM in accordance with "Method for the Determination of Asbestos in Bulk Building Materials" EPA/600/R-93/116 July 1993. Detection Limit of 1%.

Certified Results provided by ALSF are included in **Appendix B**.

4.0 CONCLUSION / RECOMMENDATIONS

Based on the results of the asbestos survey, chrysotile asbestos is found in one of the six concrete samples in the form of naturally occurring serpentine aggregates at concentrations above 0.1 %. Considering the other 5 samples contained no asbestos, as confirmed by point count and PLM analysis, we believe the mixture of serpentine aggregate is localized along the west perimeter wall.

We recommend removal and proper disposal of the portion of the west retaining wall as asbestos containing constructions materials (ACCM < 1%). As shown in the attached diagram, the marked area long the west wall of the pump station near sample 2808-6 is estimated less than 50 ft².

Demolition of the portion of the west wall as ACCM shall be conducted under supervision of an EPA accredited supervisor, trained workers with appropriate PPE. CAL-OSHA work procedures such as wet method, regulated work areas and PEL exposure assessment will be required.

Notifications to BAAQMD will not be required due to non friability of concrete. All concrete waste generated during the demolition must be stored inside a lined closed top dumpster. The waste may be recycled and/or disposed of as regular construction debris.

END OF SECTION

APPENDIX A

Photo Documentation
Sample Location Map

Sample Location 2808-06

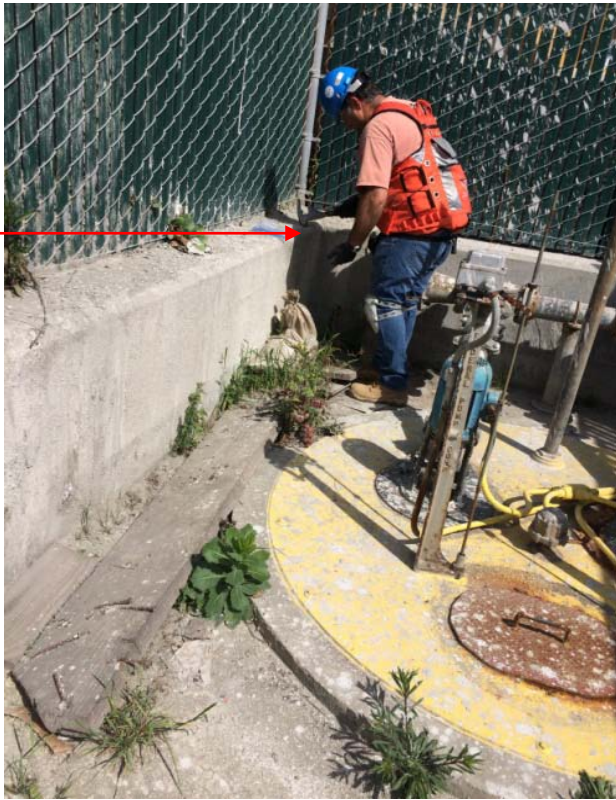
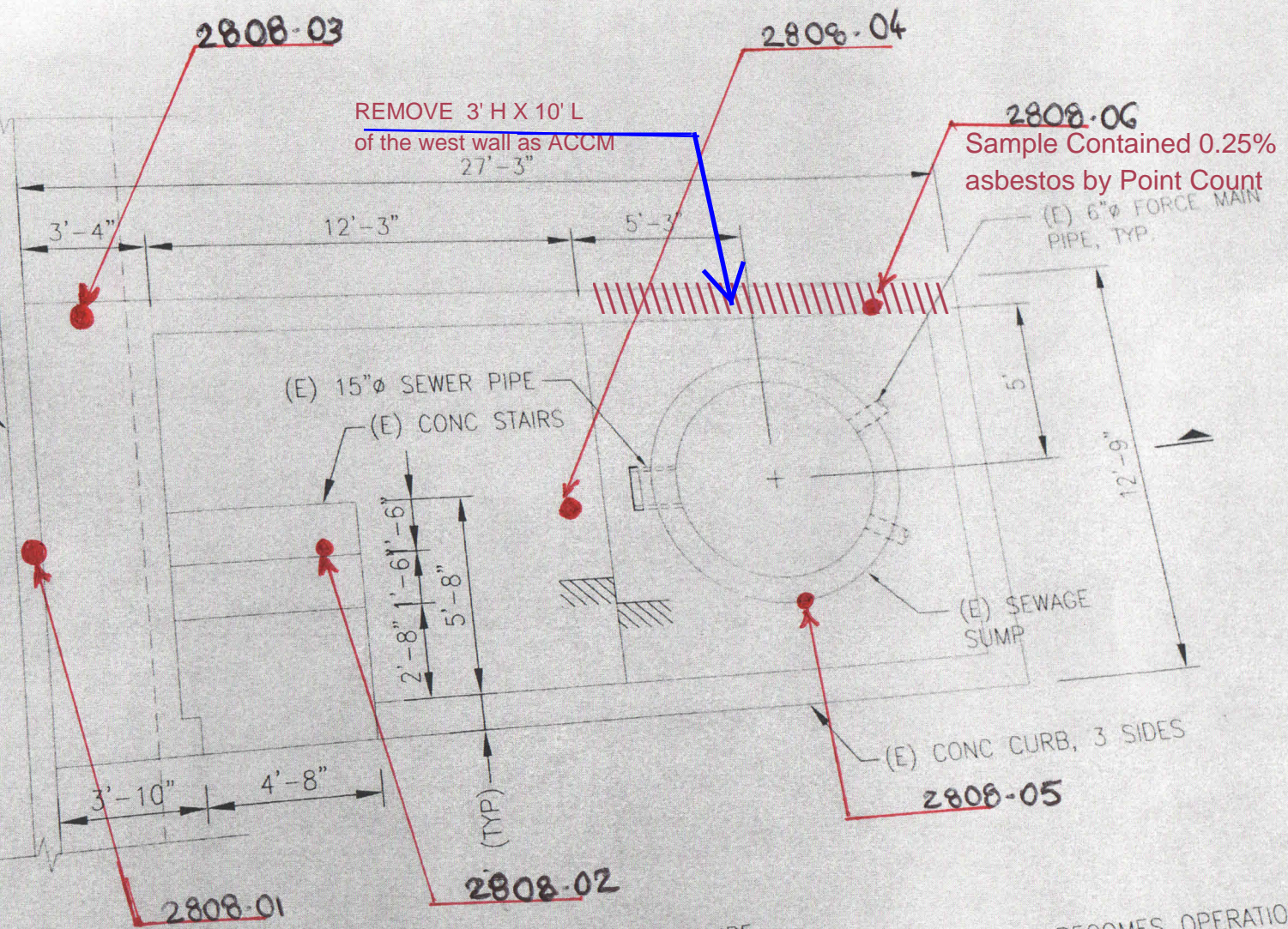


Photo 1. Gray Concrete – Chrys 0.25%



Photo 2. Entry steps Area – Gray concrete with shells

CONC SCREEN WALL,
TING TO REMAIN



NOTES:

1. DEMO (E) CONC SPILL CONTAINMENT STRUCTURE.
2. SAVE & KEEP OPERATIONAL (E) SEWAGE SUMP TILL NEW SEWAGE SUMP BECOMES OPERATIONAL.
3. SAVE (E) 6"Ø FORCE MAIN PIPES.
4. CAP (E) 15"Ø SEWER PIPE AFTER TEMP. SEWER PIPE IS INSTALLED PER MECH. DWG.
5. SAVE (E) CONC SCREEN WALL, FOOTING.

● Concrete Sample location
 ///// Remove and dispose of ACCM wall

DEMOLITION PLAN - SPILL CONTAINMENT STRUCTURE
 SCALE: 1/4" = 1'-0"

APPENDIX B
Certified Laboratory Results

POLARIZED LIGHT MICROSCOPY ANALYSIS FOR ASBESTOS CONTENT

Client: ENVIROSURVEY, INC.
 82 MARY STREET
 SAN FRANCISCO, CALIFORNIA 94103

Project #: 2808
Project Name: AMADOR PUMP HOUSE
Location: 450 AMADOR ST., SAN FRANCISCO, CA

Report Number: CD22604
Date: MAY 2, 2016
Analyst: OLGA KIST
Date Analyzed: MAY 2, 2016
Sample Collector: ALEX ZEBARJADIAN
Collection Date: APRIL 26, 2016
1 Sample(s) containing Asbestos

	6 Sample(s) Analyzed	A S B E S T O S	N O N A S B E S T O S
	6 Sample(s) Received 4/26/16 16:50	Type and % or	Other Fibers (%)
Sample #	Description / Location	NONE DETECTED	Balance
1. 2808-01	GRAY CONCRETE WITH ROCKS/WIRE MESH / SOUTH RETAINING WALL GRAY CONCRETE WITH SHELLS	NONE DETECTED	ARAGONITE <1, SILI, IRON OXIDES, CARB, OPAQUES, MISC.
2. 2808-02	GRAY CONCRETE WITH CHICKEN WIRE / ENTRY STEP AREA GRAY CONCRETE WITH SHELLS	NONE DETECTED	ARAGONITE <1, SILI, IRON OXIDES, CARB, OPAQUES, SERPENTINE, MISC.
3. 2808-03	GRAYISH CONCRETE WITH AGGREGATE / SOUTH PLATFORM GRAY CONCRETE WITH SHELLS	NONE DETECTED	ARAGONITE <1, SILI, IRON OXIDES, CARB, OPAQUES, SERPENTINE, MISC.
4. 2808-04	CONCRETE SLAB / MAIN FLOOR GRAY CONCRETE	NONE DETECTED	SILI, OPAQUES, IRON OXIDES, CEMENT, MISC.
5. 2808-05	CIRCULAR CURB / AROUND UNDERGROUND TANK GRAY CONCRETE	NONE DETECTED	SILI, OPAQUES, IRON OXIDES, CEMENT, MISC.
6. 2808-06	GRAYISH DUSTY CONCRETE WITH WIRE MESH / WEST PERIMETER CONCRETE WALL		
	A) WHITE CEMENT COATING	NONE DETECTED	CELL, FEATHERS <1, SILI, IRON OXIDES, CARB,
	B) GRAY CONCRETE	CHRY S <1*	ARAGONITE <1, OPAQUES, SERPENTINE, MISC.
		*CHRY SOTILE 0.25% BY 400 POINT COUNT; CHRY SOTILE FOUND WHEN SERPENTINE IS CRUSHED.	

PAGE 1 OF 2

050216 LABORATORY BLANK (1866 GLASS FIBERS)
A S B E S T O S T Y P E S
 CHRY S: Chrysotile
 AMOS: Amosite
 CROC: Crocidolite
 TREM: Tremolite/Actinolite
 ANTH: Anthophyllite

N O N A S B E S T O S
 CELL: Cellulose
 GL: Fiberglass/Mineral Wool
 SYN: Synthetic
 CARB: Carbonates
 SILI: Mixed Silicates
 POLY: Polyethylene
 FTALC: Fibrous Talc
 FGYP: Fibrous Gypsum
 FELD: Feldspar
 CASI: Calcium Silicates

Bulk samples analyzed in accordance with "Method for the Determination of Asbestos in Bulk Building Materials" EPA/600/R-93/116, July 1993. The detection limit is 1%. Quantitation of asbestos is by calibrated visual estimation. Analytical Labs San Francisco, Inc. (ALSIF) is recognized under the National Laboratory Accreditation Program for satisfactory compliance with criteria established in Title 15, Part 7 code of Federal Regulations and accredited for bulk asbestos fiber analysis (NVLAP lab code: 101909-0). Asbestos fibers less than 0.2 microns cannot be resolved by light microscope. This report must not be reproduced except in full, without the written approval of ALSIF and pertains only to the samples analyzed.

AUTHORIZED SIGNATURE 

DATE 5/2/16



ANALYTICAL LABS SAN FRANCISCO INC.
 467 Potrero Avenue, San Francisco, CA 94110 (415) 552-4595 FAX 552-0730

**QUANTITATION OF ASBESTOS CONTENT USING POINT COUNTING
 METHOD AND POLARIZED LIGHT MICROSCOPY (CARB 435)**

Client: ENVIROSURVEY, INC.
 82 MARY STREET
 SAN FRANCISCO, CALIFORNIA 94103

REPORT #: CD22604.PT
 DATE COMPLETED: MAY 2, 2016
 ANALYST: O. KIST

Project #: 2808
 Project Name: AMADOR PUMP STATION

SUPPLEMENTAL TO
 PLM BULK REPORT CD22604

SAMPLE NO. RESULT	DESCRIPTION	TOTAL POINTS	ASBESTOS AREA PERCENT BY POINT-COUNTING	STATISTICAL LIMIT
2. 2808-02	GRAY CONCRETE WITH CHICKEN WIRE / ENTRY STEP AREA			
NONE DETECTED	GRAY CONCRETE WITH SHELLS	400	<0.25%	0.25%
3. 2808-03	GRAYISH CONCRETE WITH AGGREGATE / SOUTH PLATFORM			
NONE DETECTED	GRAY CONCRETE WITH SHELLS	400	<0.25%	0.25%
6. 2808-06	GRAYISH DUSTY CONCRETE WITH WIRE MESH / W. PERIMETER CONCRETE WALL			
CHRYS <1	B) GRAY CONCRETE	400	0.25%	0.25%

AUTHORIZED SIGNATURE _____

DATE _____

5/2/16

BULK MATERIAL SAMPLE LOG

82 Mary Street
San Francisco, CA 94103
(415) 882-4549
(Fax) 882-1685

CD22604-

ESI Project #: 2808
Project Name: AMADOR Pump House
Project Location: 450 AMADOR ST. S.F. CA.

Sampling Date: 04/26/16
Sampled by: A/Z. MARYM/HJ
Analyses requested

ITEM	SAMPLE No.	MATERIAL TYPE / BULK SAMPLE LOCATION	Unit No.	MATERIAL CONDITION QUANTITIES /SF.	COMMENTS
-1	2808-01	Gray Concrete with Rebar/wide Mesh, South Retaining wall - 8' high		≈ 8' x 12' ≈ 2-3' Thick.	Covered with dust.
-2	" -02	Gray Concrete w/ chicken wire. Entry step area.		6' x 5'	
-3	" -03	grayish Concrete with Aggregate South Plat Form		3' W x 12' L x 3' h.	
-4	" -04	Concrete slab. 6" Thick Main Floor.		25' x 15' w L	
-5	" -05	Circular Curb around Underground Tank		8' Diameter 4" x 4"	
-6	" -06	WEST Perimeter Concrete wall grayish Dusty Concrete with wide Mesh		≈ 2' W x 3' h x 25' L.	
		3/4 To 1" Holes Throughout	Sampling location		CARB 435 - PTCT 3 samples.

SAMPLES SENT TO: EMSL ALSF Other: _____ TURN AROUND: Rush 24 Hours 3-5 Days

Relinquished by: Alexis Zebay Signature: A.Z.
Received by: [Signature] Signature: _____

Date/Time: 04/26/16 @ 15:00
Date/Time: 4/26/16 16:50