



Dear, CCSF Project Representative and Awarded Contractor.

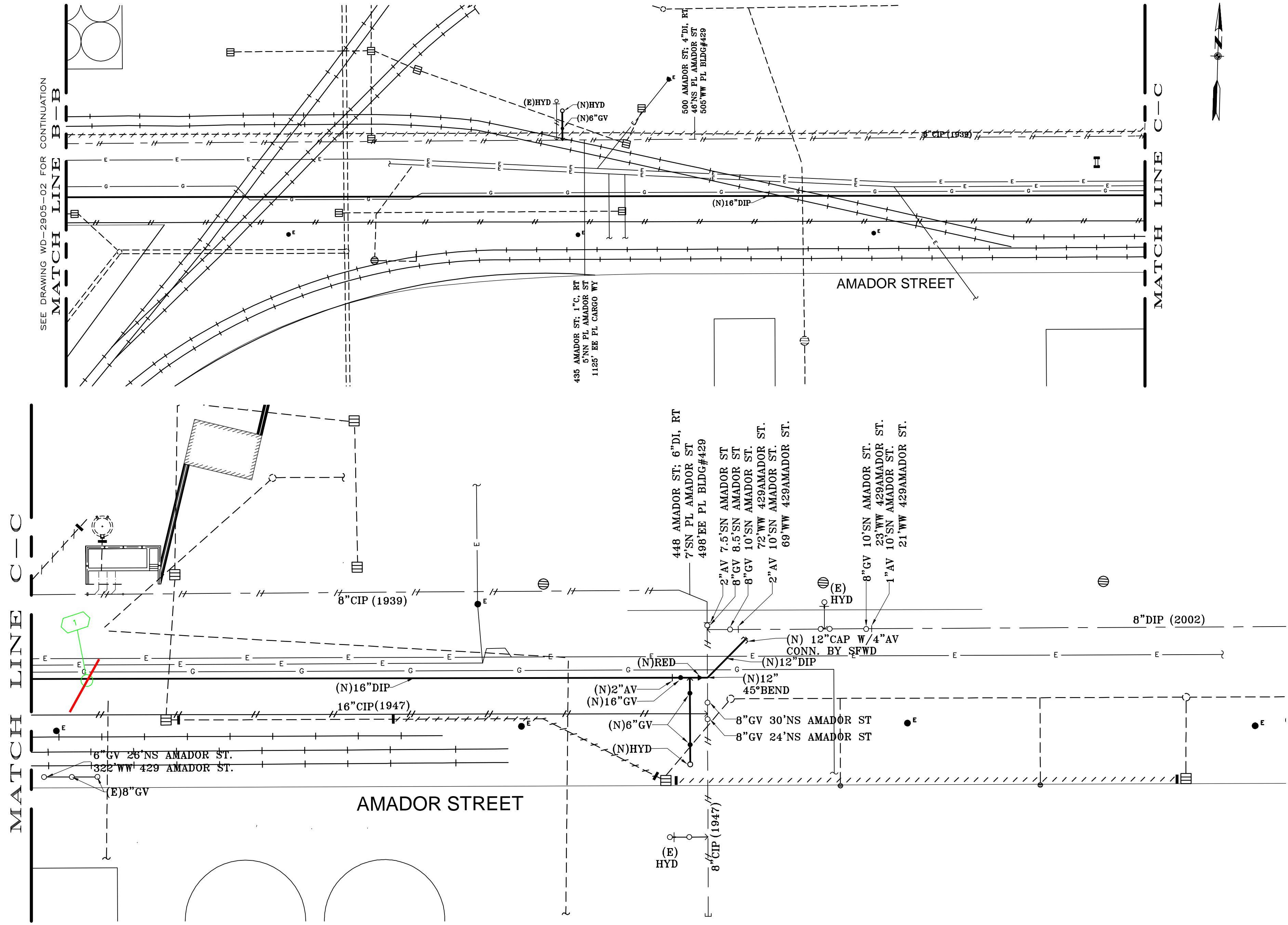
Explanatory note for Support and Work Around (SAWA) of PG&E's facilities; This is an estimate only for SAWA costs associated to PG&E's Gas and Electric Distribution assets. PG&E's estimate and payments will be made based on the **2024 Fixed Price Schedule** within *section 00 73 21 of the Utility Crossing Specifications*. All support documentation per the Utility Crossing Specs must be included with a SAWA invoice submission. PG&E reserves the right to refuse or reduce payment of any support costs which require but do not include required support documentation.

Sincerely,

PG&E Service Planning Department
Pacific Gas & Electric Company

Confirmed Support and Work Around Projects: SWAPP/FPP Cost Estimate

Project Name: <i>SF Port Amador St.</i> Advertised Project Number: <i>23701 (18211)</i> Rep/LanID: <i>D2Gv</i> SAWA Cost Year: <i>2023</i> PG&E Application Number: <i>127576795</i>										
City Facility Installation: <i>Sewer Work</i> PG&E Utility Crossing Type: <i>Electric</i> PG&E PM Number: <i>46096791</i> Estimator/LanID: <i>ZXCP</i>										
Crossing No.	Facility Size <i>(whole inch - per WebViewer and GIS systems)</i>	Facility Type	**Facility Length <i>(footage)</i>	Cost Group No.	Fixed Cost	Support Cost <i>(per Ft. after first 6ft.)</i>	Nested Facility Reduction <i>(if applicable 33 1/3%)</i>	**Joint Trench <i>(Yes/No - If yes, list joint occupants)</i>	**Joint Trench PG&E Total <i>(#. of PG&E facilities within trench) **If no JT exists, enter 1 in cell for automatic cost calcs to apply</i>	Total Crossing Cost
1	1-2"	STL	6ft	1	\$717.00	\$0.00	\$0.00	No	1	\$717.00



- NOTES:
1. CITY'S CONTRACTOR PROPOSED TO REPLACE SEWER OR WATER PIPELINES AS SHOWN.
 2. PG&E TO PAY CONTRACTOR SUPPORT AND WORK AROUND IN LIEU OF RELOCATION, PER CITY'S AGREEMENT.
 3. ANY QUESTIONS, CONTACT REP. DANA SOUZA

1. CITY'S CONTRACTOR TO PROVIDE PROOF OF EXISTING PG&E DAMAGED FACILITIES PRIOR TO START OF WORK. IF THESE FACILITIES HAVE NOT BEEN IDENTIFIED PRIOR TO CONSTRUCTION, THE CONTRACTOR WILL BE RESPONSIBLE FOR ITS REPLACEMENT.

CROSSING NUMBER	SIZE OF FACILITIES	YEAR	GROUP	LENGTH OF CROSSING	FIXED COST	SUPPORT COST	NESTED FACILITY REDUCTION	COST
1	1-2"STL	2023	1	6FT	\$717	\$0	\$0	\$717
TOTAL COST								\$717

CONSTRUCTION SKETCH
 FROM 600 AMADOR ST TO 429 AMADOR ST
 SAN FRANCISCO
 23701 (1821) - Amador St. Project (SFPort)

ENGINEERING AND PLANNING DEPT.
 2180 HARRISON ST
 SAN FRANCISCO, CA 94110

EST: ZHIBIN CHEN 628-219-2260
 ADE: DERRICK VICTA 415-695-3429
 SUP: RYAN AGUILAR 510-680-0313
 REP: DANA SOUZA 415-757-8485

PLN: [Redacted]
 DATE: 12/23/2023
 SCALE: NTS
 SHEET: 1 OF 1 REV: 0

NO ENVIRONMENTAL ISSUES
 GAS CONFLICT: NO
 FIRE AREA: LRA-TER 1

PRIMARY VOLTAGE: 12 KV VOLTAGE AREA: 3
 LATITUDE: 37.74585 LONGITUDE: -122.38091
 SOURCE SIDE DEVICE: 12531
 SUB. & CIRCUIT: HUNTERS POINT (P) 1106
 DSON SAG: N/A RAPTOR ZONE: NO
 LOADING AREA: LIGHT ARRESTER DIST: 3
 CORROSION AREA: SEVERE INSULATION DIST: AA
 EXEMPT EQUIP INST: N/A

811 Know what's below. Call before you dig.

PACIFIC GAS & ELECTRIC COMPANY

