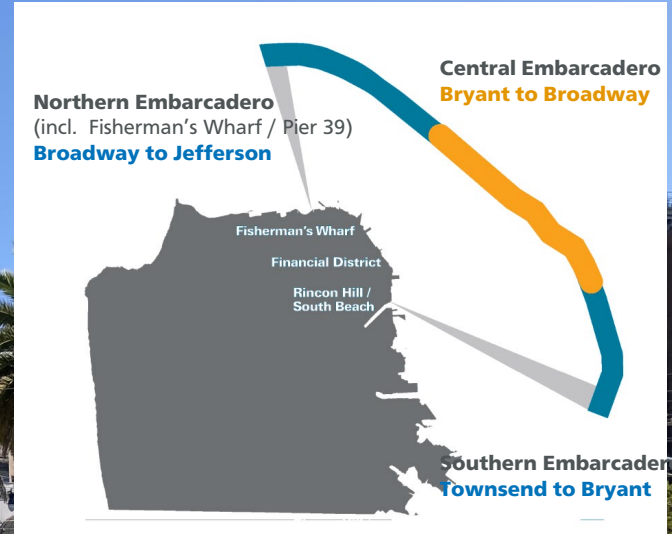


Central Embarcadero Safety Project



Embarcadero Enhancement Program

Agenda

1. Enhancement Program update

- **Northern Embarcadero:** Pier 33 quick-build (NB protected bikeway) currently planned but not funded (future potential project)
- **Promenade safety measures:** Continue to monitor safety concerns & issues, particularly near the Ferry Bldg
- Overlapping/related planning efforts

2. Central Embarcadero Safety Project

- Status update including preview of 35% design elements
- Discuss public input opportunities & other next steps



Embarcadero Enhancement Program

Central Embarcadero Capital Phase

Project Update

- Recently reached draft **35% design milestone**
- Recently submitted \$1m **Safe Routes to BART** grant application to solidify project funding (estimated construction budget is \$8m - \$10m)
- NEPA **environmental review** (due to project's federal funding)
- **Initial outreach and interagency review** this winter with public hearings and approval actions planned for later in 2024

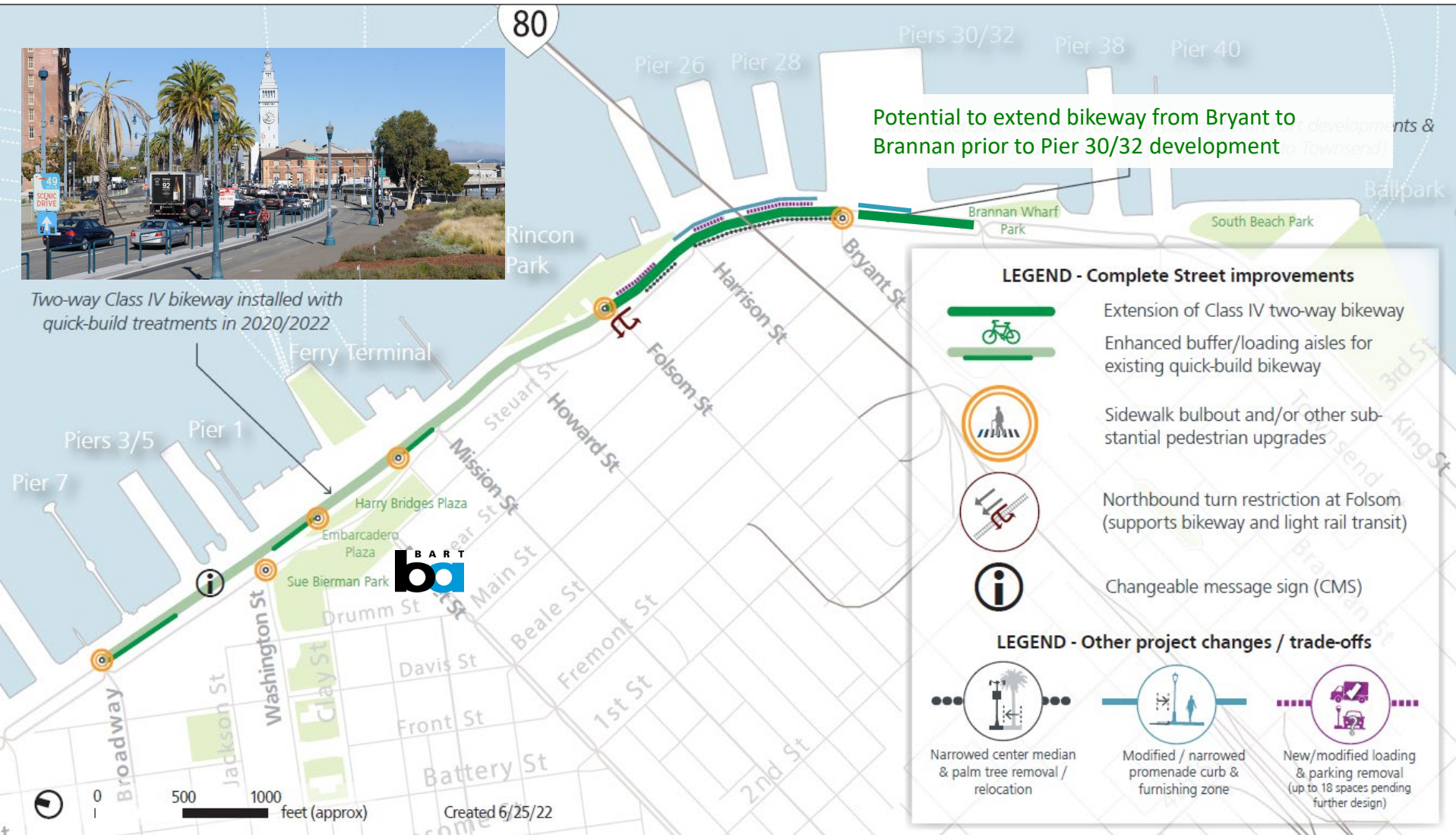


Embarcadero Enhancement Program

Central Embarcadero Overview



Two-way Class IV bikeway installed with quick-build treatments in 2020/2022

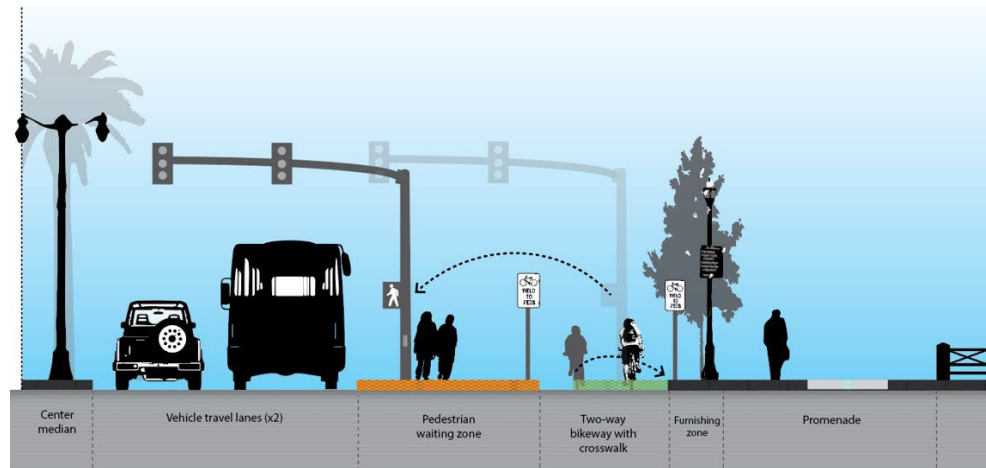


Embarcadero Enhancement Program Central Embarcadero Overview

Broadway to Mission Street (existing bikeway)



- Replace outdated curb extensions & ramps with **raised crosswalks** and shorter roadway crossings (Ferry Building zone)
- Increase/**improve bikeway buffer**, pedestrian waiting zones
- Other **promenade safety** measures
- Roadway **Variable Message Sign (VMS)**



Embarcadero Enhancement Program

Central Embarcadero Overview

Broadway to Mission Street (existing bikeway)



Potential concrete islands

Embarcadero Enhancement Program

Central Embarcadero Overview

Broadway to Mission Street (existing bikeway)



Potential concrete islands & promenade safety measures

Embarcadero Enhancement Program

Central Embarcadero Capital Phase

Variable Message Sign (VMS)

- Real-time information display for NB vehicles in vicinity of the Ferry Building
- Communicates special event restrictions/detours, estimated travel time, safety messages, emergency alerts, etc.
- Potential to integrate off-street parking capacity data, if available



Embarcadero Enhancement Program Central Embarcadero Capital Phase

LEGEND - Other project changes / trade-offs



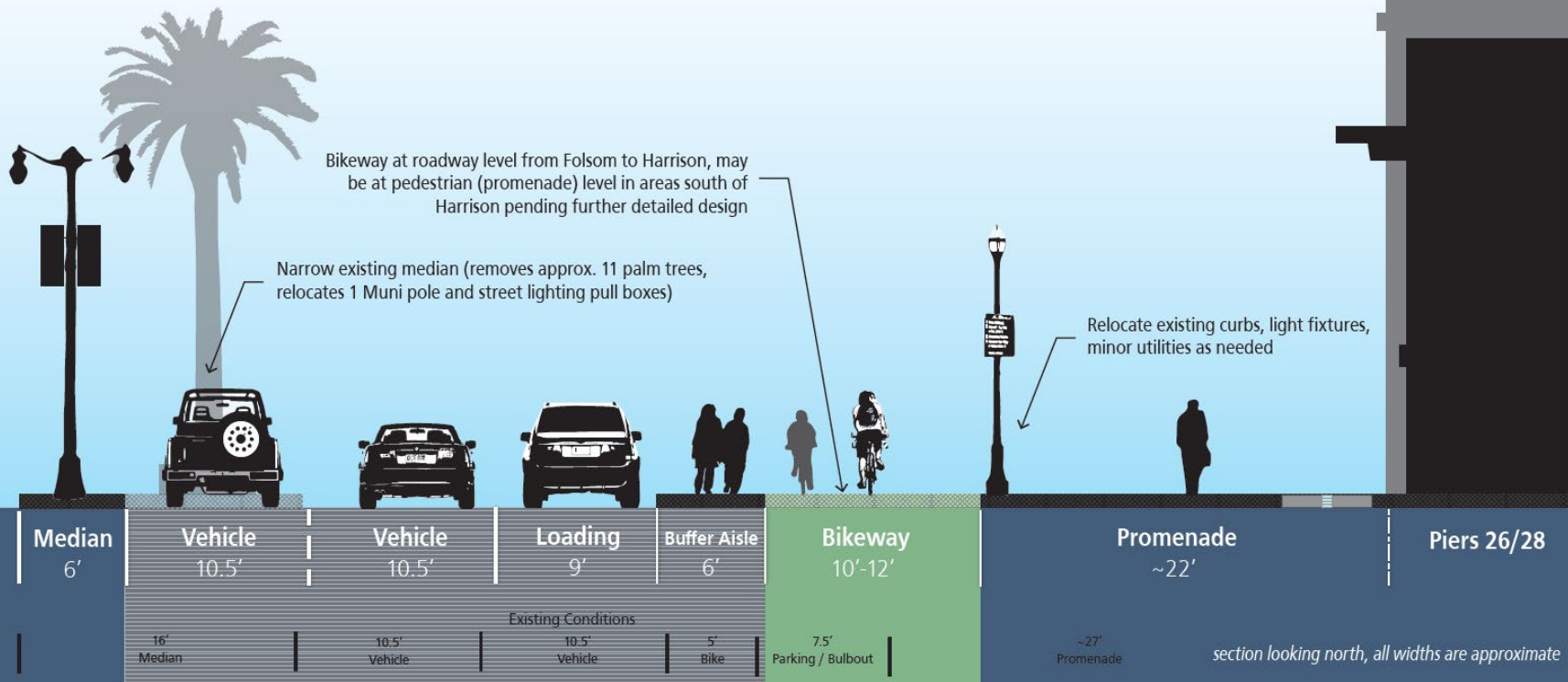
Narrowed center median & palm tree removal / relocation



Modified / narrowed promenade curb & furnishing zone



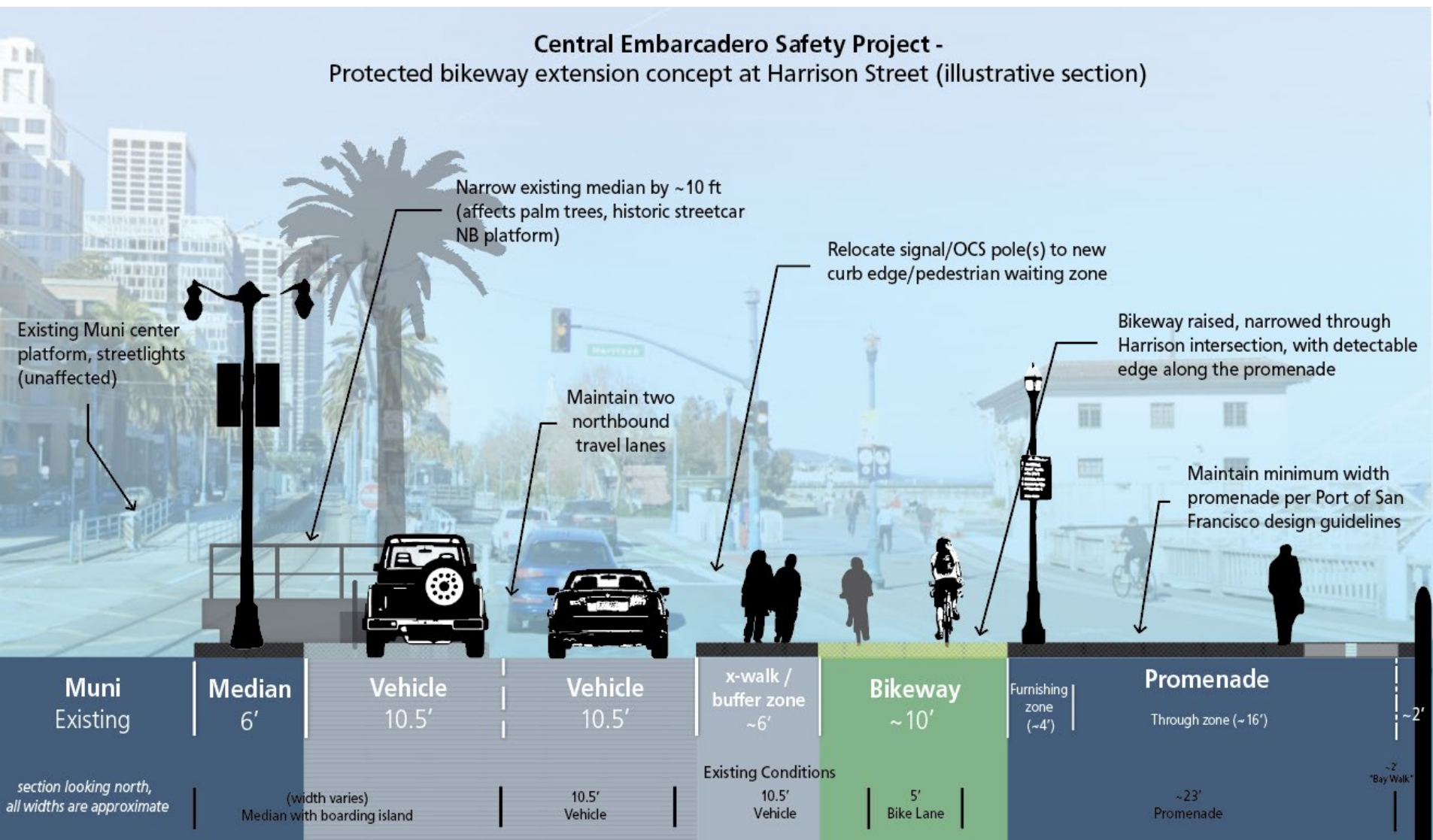
New/modified loading & parking removal (up to 18 spaces pending further design)



Embarcadero Enhancement Program

Central Embarcadero Capital Phase

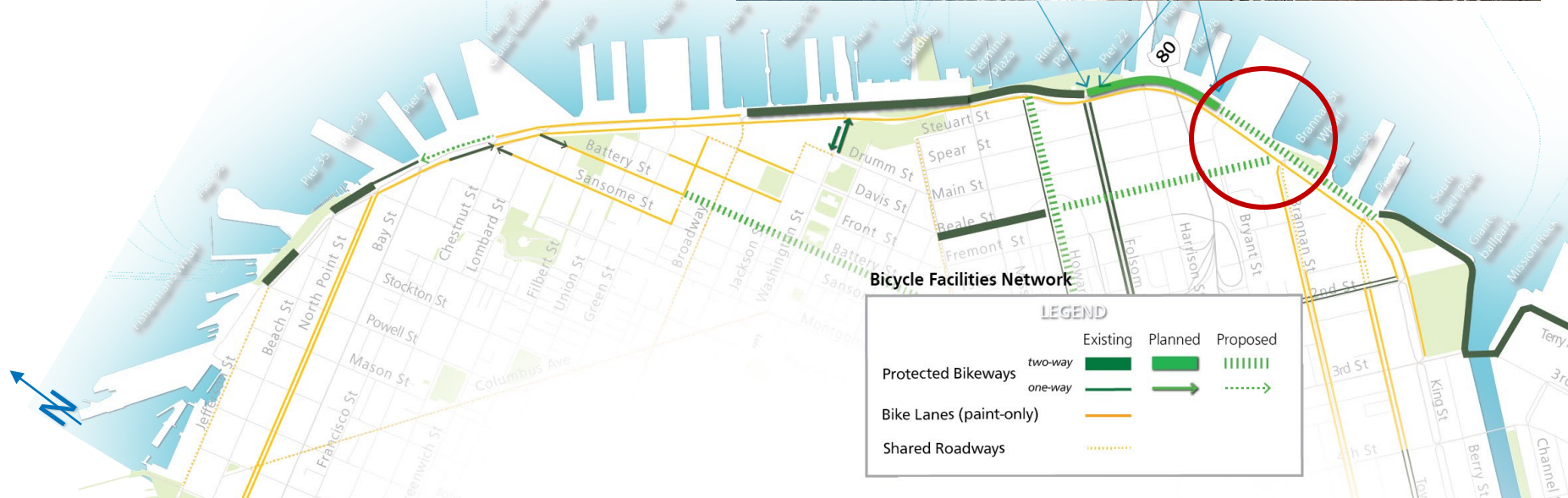
Central Embarcadero Safety Project - Protected bikeway extension concept at Harrison Street (illustrative section)



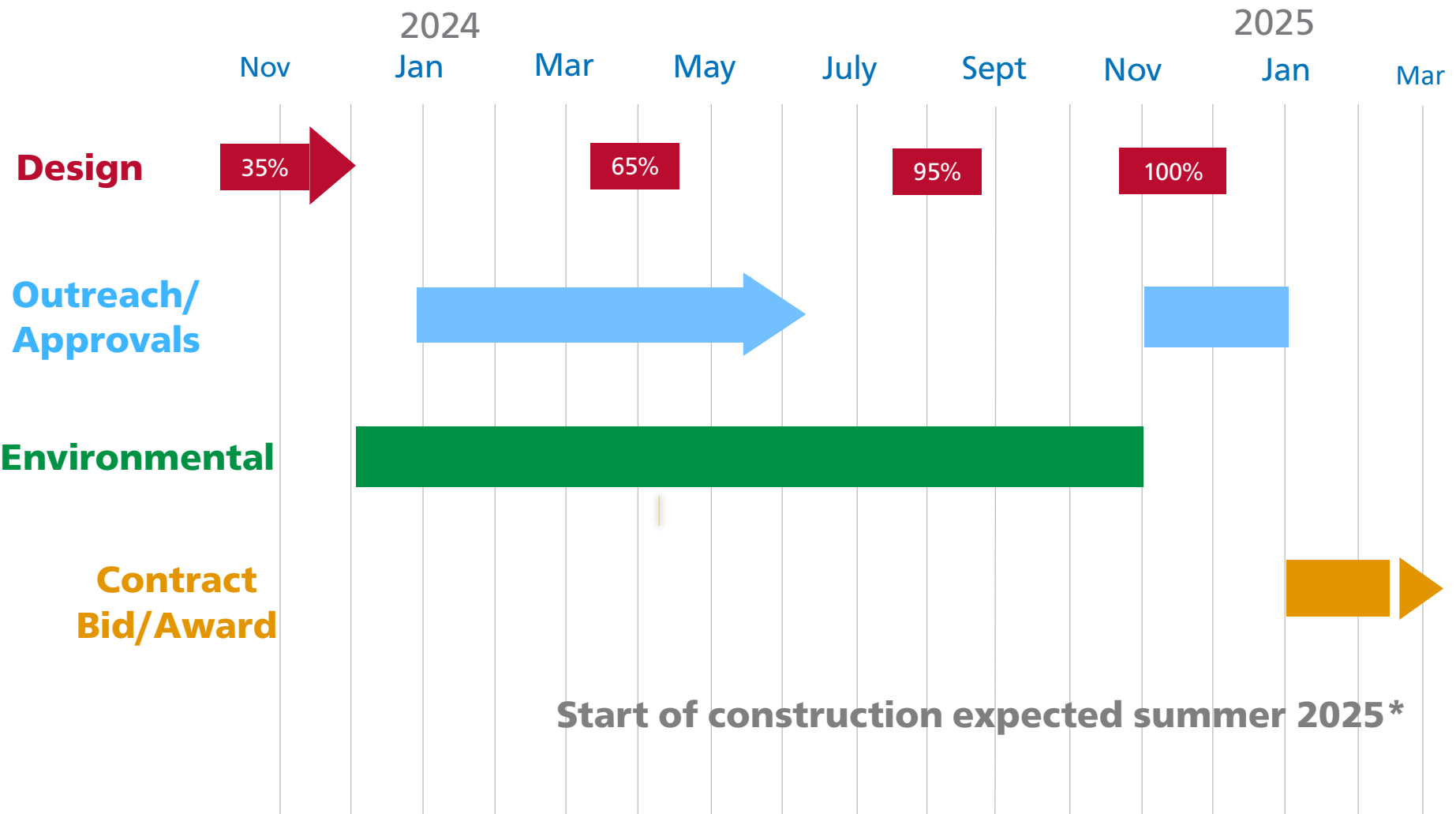
Embarcadero Enhancement Program Central Embarcadero Capital Phase

Bikeway extension south to Bryant or Brannan Street

- Restricts northbound left-turn at Folsom Street
- Narrows median, removes 11 palm trees & E line outer platform
- Reconfigures promenade curbline / furnishing zone
- 14-29 parking spaces affected (converted to loading or removed)



Embarcadero Enhancement Program Central Embarcadero Capital Phase



**Estimated timeline, subject to revision*

Embarcadero Enhancement Program

Central Embarcadero Capital Phase

Next Steps

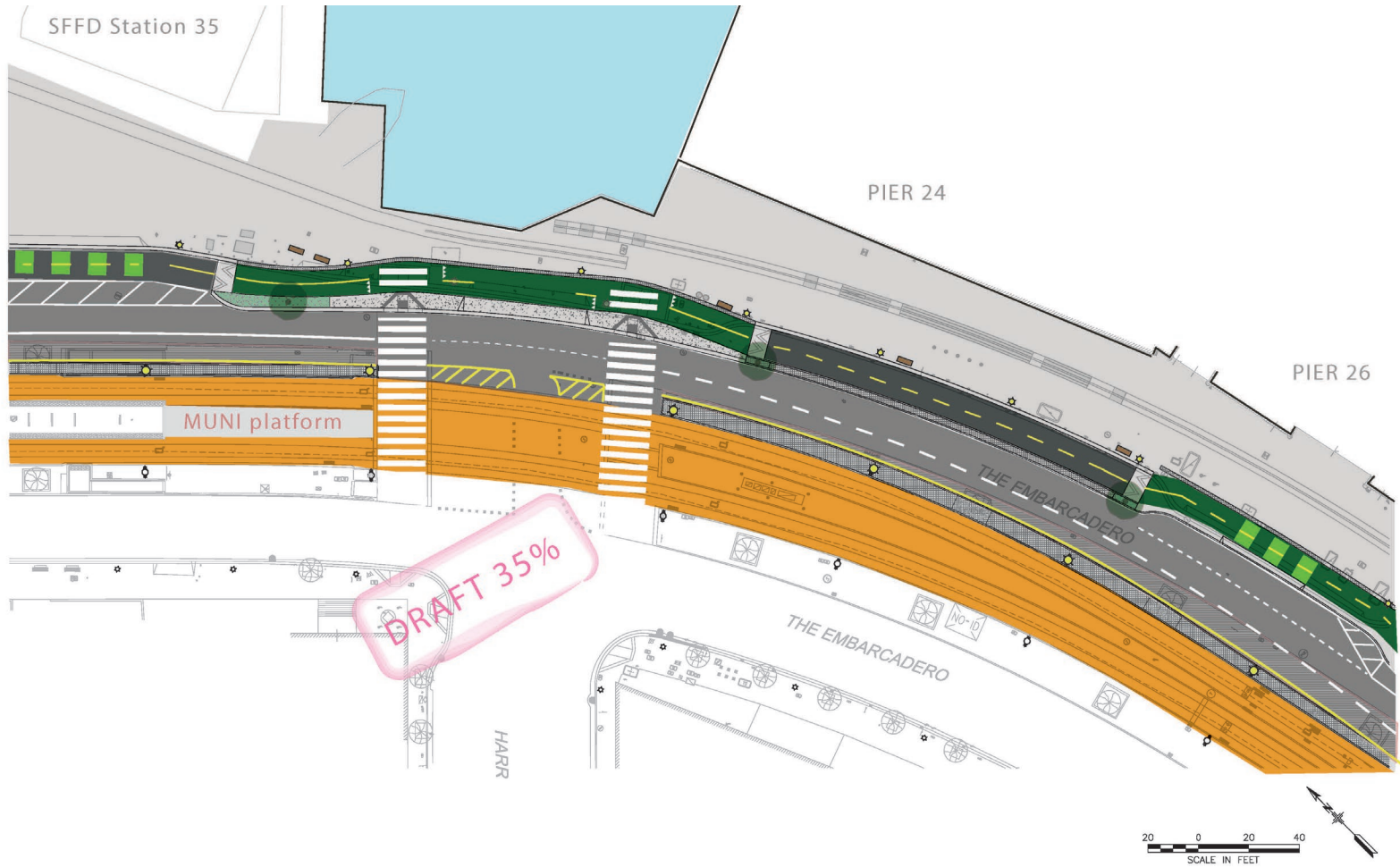
- Interagency review including SFFD, SFMTA, Port, BCDC, Public Works
- Additional stakeholder & public outreach
- Refine design scope for 65% design in spring
- Tree removal public hearing
- Additional final approvals TBD



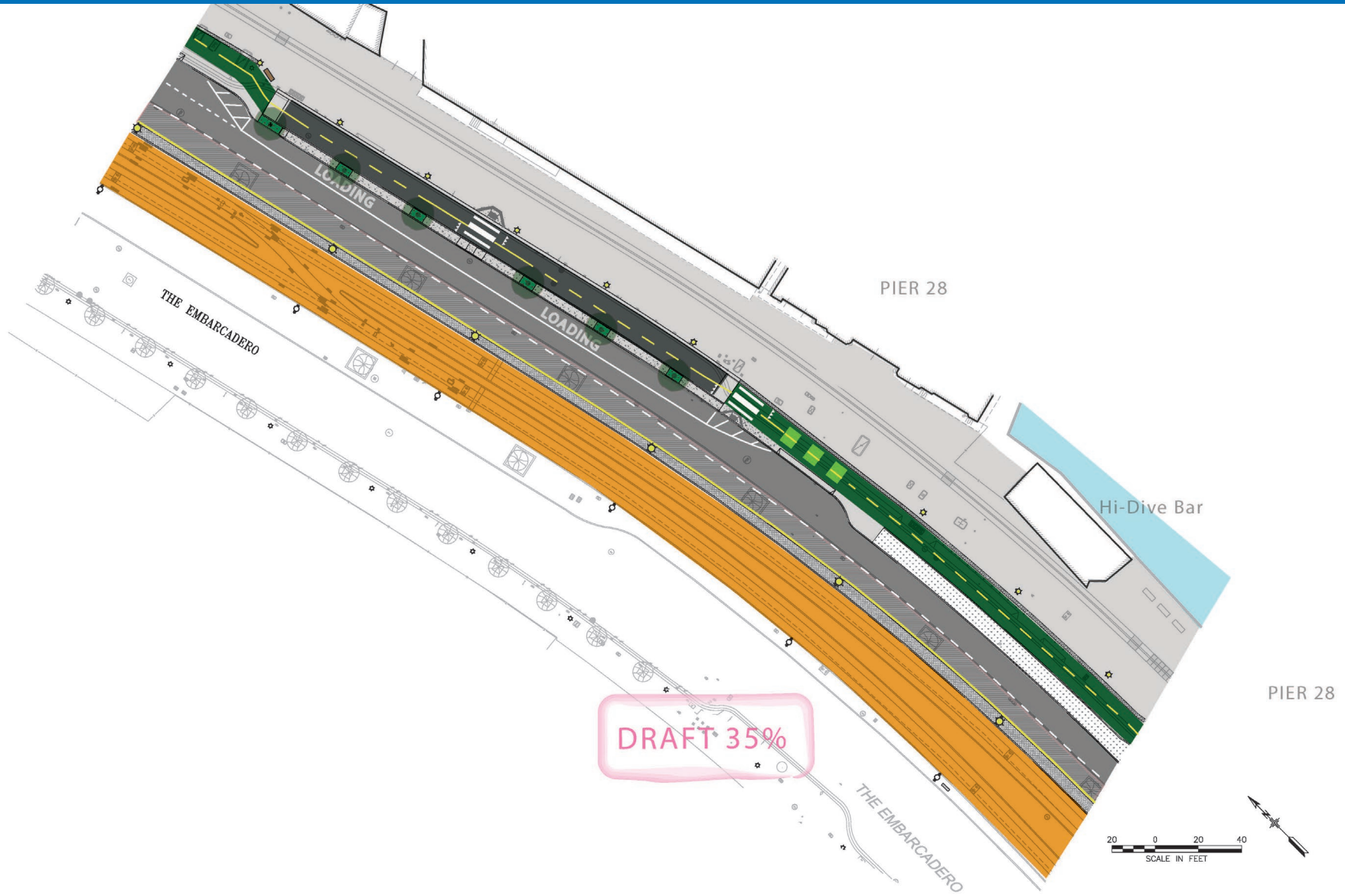
Embarcadero Enhancement Program Central Embarcadero Capital Phase



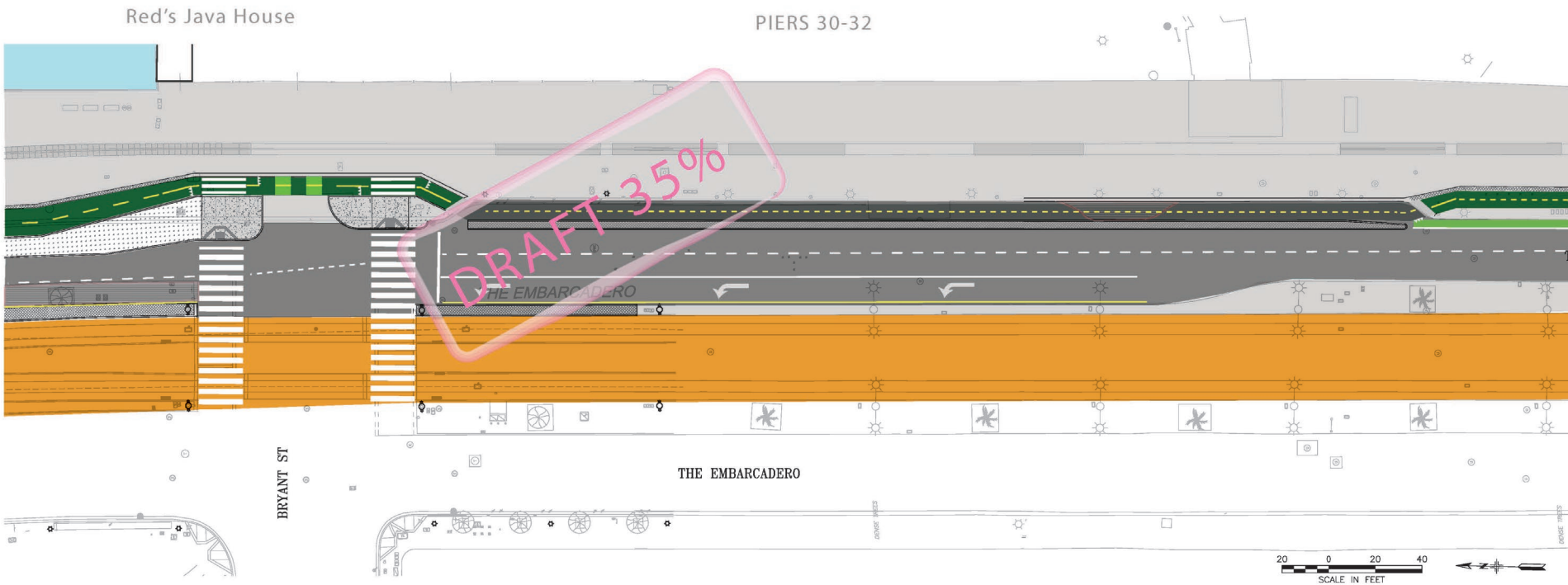
Embarcadero Enhancement Program Central Embarcadero Capital Phase



Embarcadero Enhancement Program Central Embarcadero Capital Phase



Embarcadero Enhancement Program Central Embarcadero Capital Phase



Embarcadero Enhancement Program

Central Embarcadero Capital Phase



- Proposal: From Bryant, return to street-level by removing 11 parking spaces and existing midblock bulbout
- Return to promenade-level bikeway midblock for connection to Brannan intersection (for better bike network connectivity)
- Future Port development project to revise design and address loading needs in concert with future city project(s) to extend bikeway further south to Townsend Street

Embarcadero Enhancement Program Central Embarcadero Capital Phase



Example: 'Empire State Trail', NYC

Embarcadero Enhancement Program Central Embarcadero Capital Phase



Google

Example: Lake Merritt, Oakland