



Draft Waterfront Adaptation Strategies Community Engagement Summary

October – December 2022



ENGAGEMENT OVERVIEW

October – December 2022



- Focused on sharing information about the **7 Draft Waterfront Adaptation Strategies** and hearing public feedback
- Engagement included:
 - **16 events open to the public:** online community meetings, in-person open-house, in-person mixer, waterfront walking tours
 - Multiple **focus groups and presentations** to Community Organizations and Community Advisory Councils
 - **StoryMaps, Social Media, Emails, Video**

ENGAGEMENT OVERVIEW

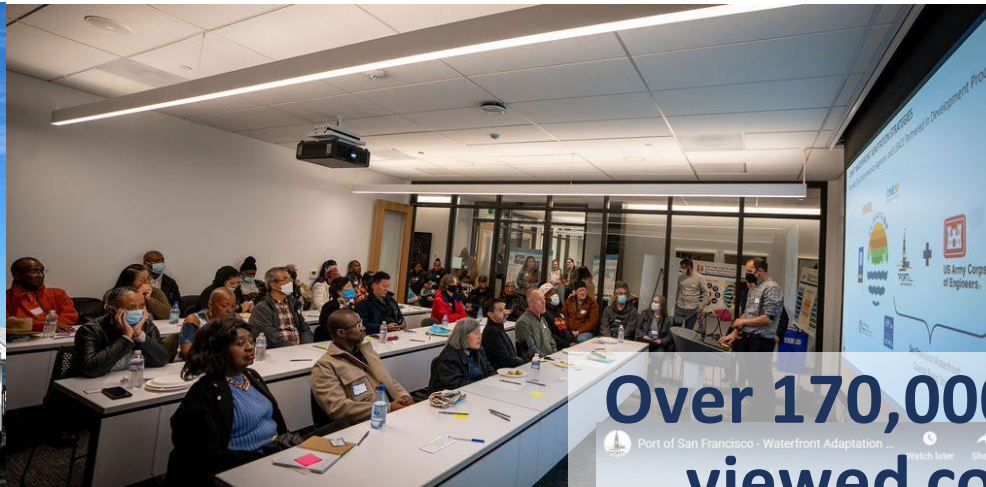
Attendance at Events



Combined
for all engagement
events, ~502 people
participated

ENGAGEMENT OVERVIEW

Reach



Over 170,000 people viewed content related to the Draft Waterfront Adaptation Strategies



RIISING TO THE CHALLENGE
San Francisco Faces Urgent Seismic, Coastal, and Inland Flood Risks Today

SEISMIC RISKS	COASTAL FLOODING	INLAND FLOODING

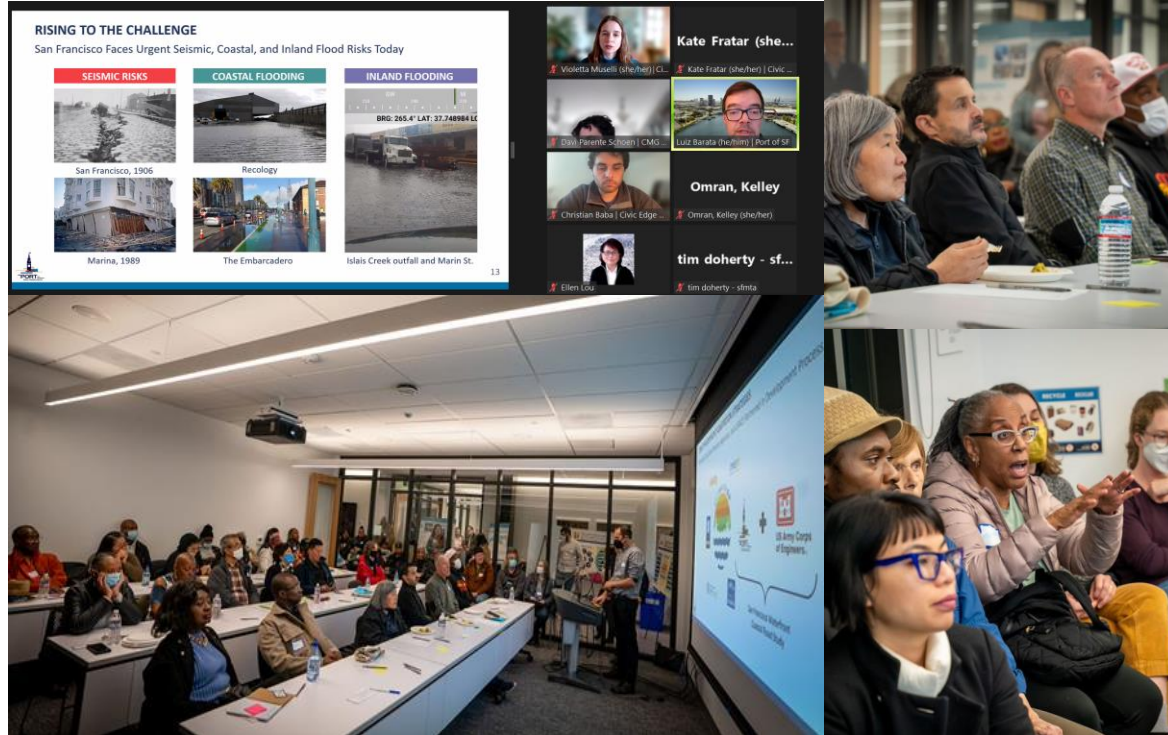
Kate Fratar (she...)
Viviana M... (she/her) | Kate Fratar (she/her) | Cole...

Omran, Kelley
Christina B... (she/her) | Omran, Kelley (she/her)

tim doherly - sf...
Tim doherly - sf...

COMMUNITY MEETINGS OVERVIEW

October – December 2022



- Two ways to attend
 - 8 online meetings
 - 2 in-person meetings
- Presentations focused either **Citywide** or on one of three waterfront regions – **Islais Creek/Bayview, Mission Creek/Mission Bay, Embarcadero**
- City partner agency support
- 258 members of the public participated

COMMUNITY MEETINGS OVERVIEW

Schedule

Date & Time	Geography
Tuesday, October 25, 6:00-7:30 PM	Citywide
Wednesday, October 26, 6:00-7:00 PM	Southern Waterfront Community Mixer*
Tuesday, November 1, 6:00-7:30 PM	Islais Creek / Bayview
Wednesday, November 2, 6:00-7:30 PM	Mission Creek / Mission Bay
Thursday, November 3, 12:00-1:30 PM	Citywide
Wednesday, November 9, 6:00-8:00 PM	Southern Waterfront Open House*
Tuesday, November 15, 6:00-7:30 PM	Embarcadero
Tuesday, December 6, 12:00-1:30 PM	Mission Creek / Mission Bay
Wednesday, December 7, 12:00-1:30 PM	Islais Creek / Bayview
Thursday, December 8, 12:00-1:30 PM	Embarcadero

*In-person

All digital community meetings hosted over Zoom, with registration posted on the Port's Eventbrite. The full October - December schedule was available at sfport.com/our-waterfront and promoted via the Port's social media, Waterfront Resilience Program eNewsletter, and community partners.

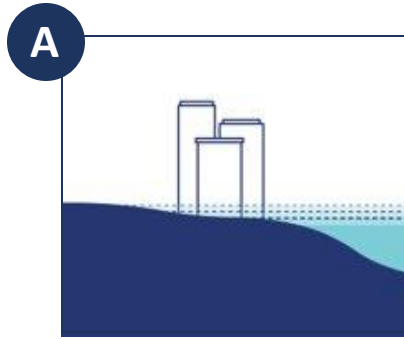
COMMUNITY MEETINGS OVERVIEW

Meeting Agenda

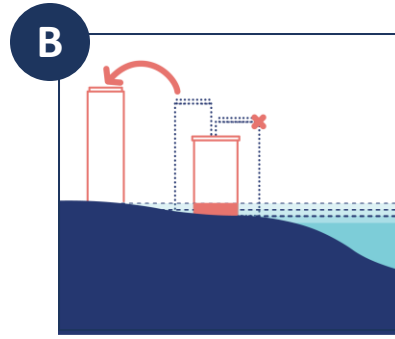


- Understanding the Risks
 - *What we're facing*
- Waterfront Resilience Program
 - *What we're doing*
- Community Priorities
 - *What we've heard*
- Range of Possibilities
 - *What we're considering*
- Draft Waterfront Adaptation Strategies
- Next Steps
- Q&A

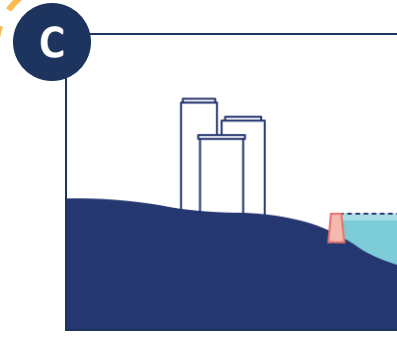
OVERVIEW OF WATERFRONT DRAFT ADAPTATION STRATEGIES



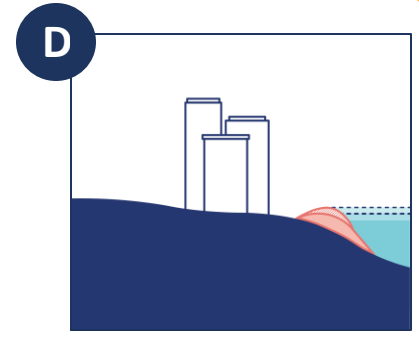
No Action



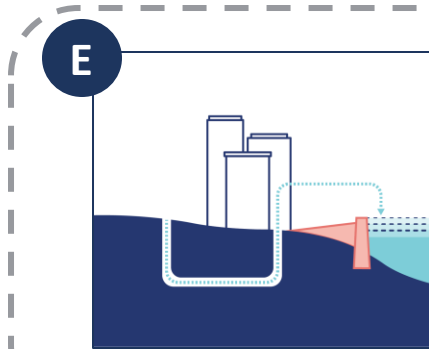
Non-Structural



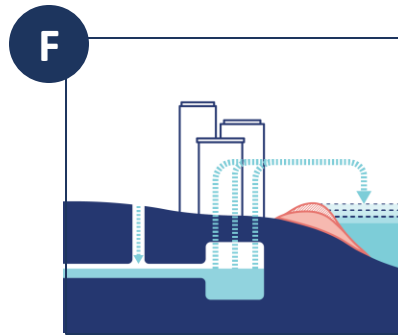
Lower Sea Level Rise



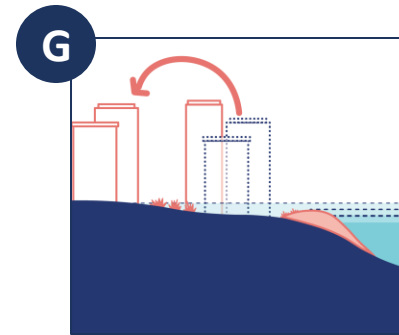
Adaptable



Hold The Line



Manage The Water



Align With Watersheds

Lower Rate of Sea Level Rise

In addition to coastal flood risks—these strategies address ground water, storm water, and seismic risks

Higher Rate of Sea Level Rise

WALKING TOURS OVERVIEW

October – December 2022



Islais Creek / Bayview Walking Tour



- 6 walking tours focused on one of three waterfront regions – Islais Creek/Bayview, Mission Creek/Mission Bay, Embarcadero
- Provided on the ground connection to the risks and adaptation work
- City partner agency support
- 102 members of the public participated

OTHER ENGAGEMENT OVERVIEW

October – December 2022



- **Multiple Focus Groups**
 - CBO Leaders
 - Waterfront Users
 - Waterfront Workers
 - Youth Ages 16-24
- **Presentations to CBOs and CACs**
- **StoryMaps** – online digital storytelling and surveys
- **Social Media, Website content, Email Campaigns, Video**
- **Waterfront Posters** – Chinese, Spanish, English

WHAT WE HEARD OVERALL

We heard the following general comments and feedback:

- Waterfront wide, community members indicated that **flooding around where they live and work, impacts to community safety, and disruption to transportation or waterfront access** are their top sea level rise related concerns.
- **Community members support a strategy that defends against higher projected rates of sea level rise.**
- **Nature-based approaches and improved public access to the waterfront** remain high priority for community members, no matter the strategy.
- **Overall, there was no strong preference for any one strategy over another when selecting between strategies E, F, and G. Pros and Cons very identified for each.**
- Community members raised many concerns in response to the draft strategies. **Common concerns ranged from equity and environmental justice implications, to technical practicalities, to questions about cost and feasibility.**

WHAT WE HEARD OVERALL

The most common questions across geographies were:

- What resilience planning is happening beyond the Port's southern boundary?
- How will contamination be addressed or mitigated, particularly in the Southern Waterfront?
- What will be done to ensure that public realm improvements do not lead to gentrification and displacement of southeast neighborhoods?
- Why is development occurring along the waterfront in areas the Port knows have high flood and earthquake risk?
- How will opportunities for local businesses and workers be prioritized?
- What are the costs of the strategies and how will funding for adaptation be secured?
- How and why are different sea level rise estimates being used?
- How will community input affect decision-making?
- Technical questions related to pumping station operation, combined sewer implications and groundwater rise.

Citywide

Digital Meetings: October 25 + November 3, 2022

Focus Groups: December 13-15, 2022



CITYWIDE EVENTS

Attendance



**Combined for
the five events,
~78 people
participated**

CITYWIDE MEETINGS: WHAT WE HEARD

We heard the following comments and feedback about adapting the waterfront from the Citywide Digital Community meetings:

- Concerns raised about whether resilience planning was occurring south of Heron's Head park (outside of Port jurisdiction), if existing development projects are accounting for sea level rise, and some discomfort regarding the length of the two project timelines (2040 and 2090).
- Excitement about San Francisco's leadership in resilience planning.
- Attendees highlighted "improving Bay ecology and habitat" and "improved public access to the water" as the top-ranking opportunities.
- Questions included: how costs are determined and how funding will be secured, if lessons have been learned from other cities, how pumping stations will be powered and maintained, and what workforce opportunities will be available.

CITYWIDE MEETINGS: WHAT WE HEARD

We heard the following comments and feedback on the seven draft strategies from the Citywide Digital Community Meetings:

- Strategies that recommended lower intervention (A and B) or used a lower projected rate of sea level rise (C) were not supported. The adaptable option (Strategy D), received some support but attendees wanted more information.
- Attendees either supported or needed more information about Strategies E. Attendees indicated there were benefits to preserving a waterfront much like it is today but were concerned about construction impacts and length of project timelines.
- There was no consensus on Strategy F. Attendees requested more specific information about tide gate and pumping station details.
- Strategy G received support for aligning with natural water patterns but questions about equity implications and the responsibility put on individuals to adapt were raised.

CITYWIDE FOCUS GROUPS: WHAT WE HEARD

We heard the following comments and feedback on the seven draft strategies from the Community Focus Groups:

- Preference for strategies that addressed higher levels of sea level rise, but Strategies C+D were seen as good starting points while some combination of longer-term strategies are implemented.
- Attendees overall showed more support for a combination of Strategies E and F because they were perceived as easier and less disruptive once completed.
- Strategy G raised the most concerns and received the least support. Though working with natural water patterns was supported in concept, participants were skeptical about level of defense and fair implementation. Concerns about negative impacts to jobs, daily life, the environment, waterfront look and feel, and safety.
- Openness to bay fill to reduce disruption to the Embarcadero roadway. Concerns about long-term effectiveness and performance in an earthquake raised, but most were open to bay fill as a way to expand public access and maintain transportation corridors.



Islais Creek / Bayview

Digital Meetings: November 1 + December 7, 2022

In-person Meetings: October 26 + November 9, 2022

Walking Tours: November 1, 2022 + Jan 21, 2023

ISLAIS CREEK / BAYVIEW EVENTS

Attendance



**Combined for
the six events,
~174 people
attended**

ISLAIS CREEK / BAYVIEW OVERVIEW: WHAT WE HEARD

We heard the following comments and feedback about adapting the waterfront from the Islais Creek / Bayview Digital Community Meetings:

- Attendees were concerned about contamination and toxicity, gentrification and displacement, and local workforce opportunities.
- Attendees expressed excitement about increased access to water recreation, restoring natural wetlands, and generating economic opportunities and job creation.
- Attendees highlighted "enhancing and restoring watersheds and native marsh habitats" and "limiting actions that need to be taken by individuals" as the top ranked opportunities.
- Questions included: how local people and businesses will be prioritized for job opportunities, how contamination will be addressed, to what resilience planning is being done south of Heron's Head Park.

ISLAIS CREEK / BAYVIEW OVERVIEW: WHAT WE HEARD

We heard the following comments and feedback on the seven draft strategies from the Islais Creek / Bayview Digital Community Meetings:

- Strategies that recommended lower intervention (A and B) or used a lower projected rate of sea level rise (C and D) were not supported.
- Regarding Strategy E, a slight majority of attendees indicated in polls that they would be in favor of more transformational changes in this geography instead of prioritizing keeping the current shoreline, streets, and buildings as they are.
- Strategy F received the most "need more information" responses. Attendees liked the defense it could provide and the potential for economic and job creation opportunities that could come from building and maintenance of infrastructure, but also expressed concerns that infrastructure like tide gates have the potential to fail.

ISLAIS CREEK / BAYVIEW OVERVIEW: WHAT WE HEARD

We heard the following comments and feedback on the seven draft strategies from the Islais Creek / Bayview Digital Community Meetings:

- A majority of attendees supported Strategy G. Aligning the City's defense strategy with natural watersheds was conceptually received positively and seen as a sustainable long-term approach.
- Strategy G also raised strong concerns included loss of jobs and industrial space, negative effects on housing, public access improvements leading to gentrification, and individuals taking on the responsibility of adaptation costs.

Mission Creek / Mission Bay

Community Meetings: November 2 + December 6,
2022

Walking Tours: October 29 + November 5, 2022



MISSION CREEK / MISSION BAY EVENTS

Attendance



**Combined for
the four events,
~83 people
attended**

MISSION CREEK / MISSION BAY OVERVIEW: WHAT WE HEARD

We heard the following comments and feedback about adapting the waterfront from the Mission Creek / Mission Bay Digital Community Meetings:

- Attendees raised concerns about the impact of sea level rise on the City's combined stormwater and sewer system, the impact of tide gates on mobility and vessel traffic along Mission Creek, the sustainable operations of infrastructure, and the cost effectiveness of adapting the waterfront.
- Attendees expressed excitement about the range of options being explored, options beyond seawalls being considered, and nature-based options.
- Attendees highlighted “preserving the existing buildings, open spaces and transportation corridors” and “transforming public spaces through multiuse and floodable spaces” as their highest ranked opportunities.
- Questions included: how floodable streets would work, what power source pumping stations would use, how tide gates would operate if power should fail, and how the current sewer system would be impacted.

MISSION CREEK /MISSION BAY OVERVIEW: WHAT WE HEARD

We heard the following comments and feedback on the seven draft strategies from the Mission Creek / Mission Bay Digital Community Meetings:

- Strategies that recommended lower intervention (A and B) or used a lower projected rate of sea level rise (C and D) were not supported.
- Strategy E received broad support. Attendees supported keeping the current shoreline, streets and buildings along the Mission Bay waterfront as they are. Though many participants favored more transformational changes to land use.
- Strategy F received mixed responses. Attendees supported, raised concerns and asked for additional information. Most questions were related to this strategy.
- Strategy G received mixed responses. Attendees both supported a nature-based approach and had concerns about the transformational scale of change.

Embarcadero

Community Meetings November 2 + December 6,
2022

Walking Tours: November 19, 2022 + Feb 4, 2023



EMBARCADERO COMMUNITY EVENTS

Attendance



**Combined for
the four events,
~77 people
attended**

EMBARCADERO OVERVIEW: WHAT WE HEARD

We heard the following comments and feedback about adapting the waterfront from the Embarcadero Digital Community Meetings:

- Attendees raised concerns about changes to mobility and transportation networks, traffic disruption, funding, cost, and feasibility.
- Attendees expressed excitement about the possibilities to expand public and pedestrian access and possibilities to reduce car traffic along the Embarcadero.
- Attendees highlighted "expanding pedestrian public access opportunities along the Embarcadero" and "using targeted bay fill to minimize construction disturbance," followed by "preserving the historic nature of the Embarcadero" as their top ranked opportunities.
- Questions included: how an elevated promenade would work, pros and cons of bay fill on the environment, and whether sea level rise estimates are expansive enough.

EMBARCADERO OVERVIEW: WHAT WE HEARD

We heard the following comments and feedback on the seven draft strategies from the Embarcadero Digital Community Meetings:

- Strategies that recommended lower intervention (A and B) or used a lower projected rate of sea level rise (C and D) were not supported.
- Strategy E received the most support in polling because of the balance of using targeted, limited bay fill and delivering a generous promenade.
- Strategy F received mixed responses. Attendees were split between either supporting this approach or indicating they needed more information.
- Attendees were concerned with the more limited public promenade that would result in Strategy G.
- Community members were open to the targeted use of bay fill as a tool to increase available space for public space and roadway.

WE HOPE TO SEE YOU AT A FUTURE WRP EVENT!

