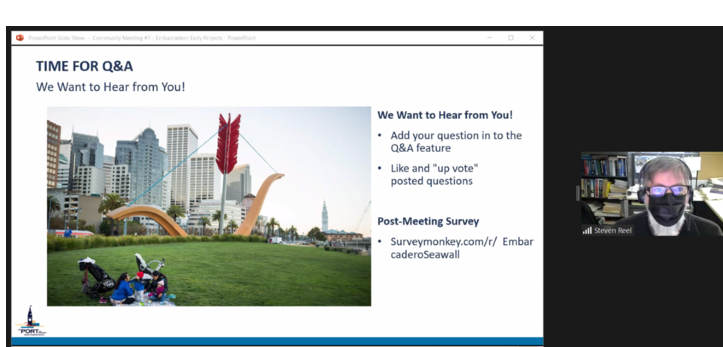




Thank You, Online Embarcadero Seawall Community Meeting Attendees!

Thank you to everyone who joined the Port on January 12 or December 17 for an online community meeting focused on coordinated resilience efforts. Staff were pleased to share updates about **Embarcadero Early Projects** as the first step for building long-term, waterfront-wide resilience.



ICYMI: King Tides

This winter's King Tides occurred December 4-5, 2021, and January 2-3, 2022. King Tides are an important reminder of the impacts sea level rise will have on our waterfront.



Port staff teamed up with the Exploratorium for its December King Tides Embarcadero Walk to talk about the history of the Embarcadero Seawall, its role in the story of San Francisco's waterfront, and how the Port is preparing for sea level rise. Read up on King Tides articles in the [San Francisco Chronicle](#) and [KQED](#) and view photos shared as part of the California Coastal Commission's [Snap the Shore, See the Future](#) California King Tides Project.

Welcoming Yes Pudding to the Ferry Building

The Port is happy to welcome owner Quinisha Johnson and **Yes Pudding** to the Ferry Building. Yes Pudding opened at the Ferry Building in December as their first permanent location. "I always said I want Yes Pudding to be a San Francisco staple ... some place that you need to stop by when you visit San



Francisco, and locals love it. What better place to do that than the Ferry Building?" Johnson told the [San Francisco Chronicle](#). Johnson started selling mason jars of her original banana pudding in the Bayview neighborhood, growing the business into pop-ups and a presence at festivals, farmers markets and events. Yes Pudding will continue to be at the Sunset Merchantile Farmers Market on Sundays at 37th & Ortega in the Outer Sunset.

Crab Season at the Port

Crab season has arrived and Fisherman's Wharf, which has been a working commercial fishing hub for more than 100 years, is ready.



Go fresh and shop local with **Off the Boat Sales** of fresh live crab sold directly by local fishers at Fisherman's Wharf.

Individual fishers are using the Fish Line mobile app to share updates about when and where they will be open to the public. Additional information can be found on the group's [Facebook](#) and [Instagram](#) pages.

Parking is extremely limited. Please do not use the Scoma's restaurant parking.

COVID-19 Updates

The Port continues its efforts to safely operate the waterfront in full alignment with San Francisco's public health and safety guidance to protect against the spread of COVID-19.

See [updates from the SF Department of Public Health](#). Additional COVID-19 information and resources below:

- [Sign up for vaccine appointments](#)
- [Look up testing information and testing options](#)
- [Read mayoral declarations](#)

sfport.com/wrp



Copyright © 2022 Port of San Francisco, All rights reserved.

You are receiving this email because you signed up on our website, at a community meeting, or through a Port of San Francisco staff member.

Share this email:



[Manage](#) your preferences | [Opt out](#) using TrueRemove®

Got this as a forward? [Sign up](#) to receive our future emails.

View this email [online](#).

Pier 1 The Embarcadero
San Francisco, CA | 94111 US

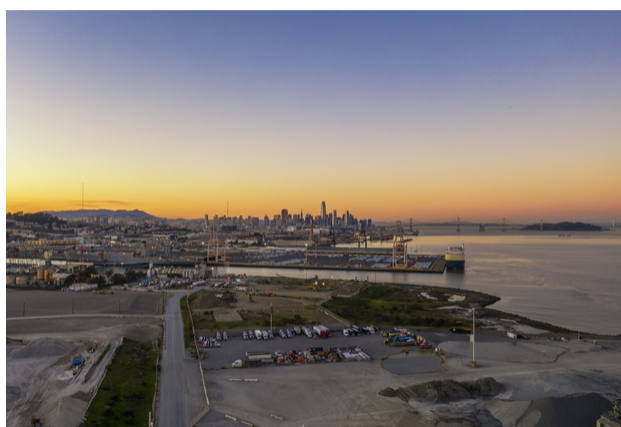
This email was sent to .
To continue receiving our emails, add us to your address book.

[Subscribe](#) to our email list.



Port Awarded New Funding to Study Waterfront Flood and Earthquake Risk

On January 19, Speaker Pelosi announced \$5 million in new funding for the Port of San Francisco and U.S. Army Corps of Engineers (USACE) to complete the USACE San Francisco Waterfront Coastal Flood Study. The funding was secured through the Bipartisan Infrastructure Law and will cover the cost of completing the federal government's share of the study. The **USACE San Francisco**



Waterfront Coastal Flood Study covers the full 7.5 miles of waterfront within the Port's jurisdiction and is one of several coordinated waterfront resilience activities being undertaken with federal, state, and local agencies. Read the **full press release**.

Meet the Sea Level Rise Seal

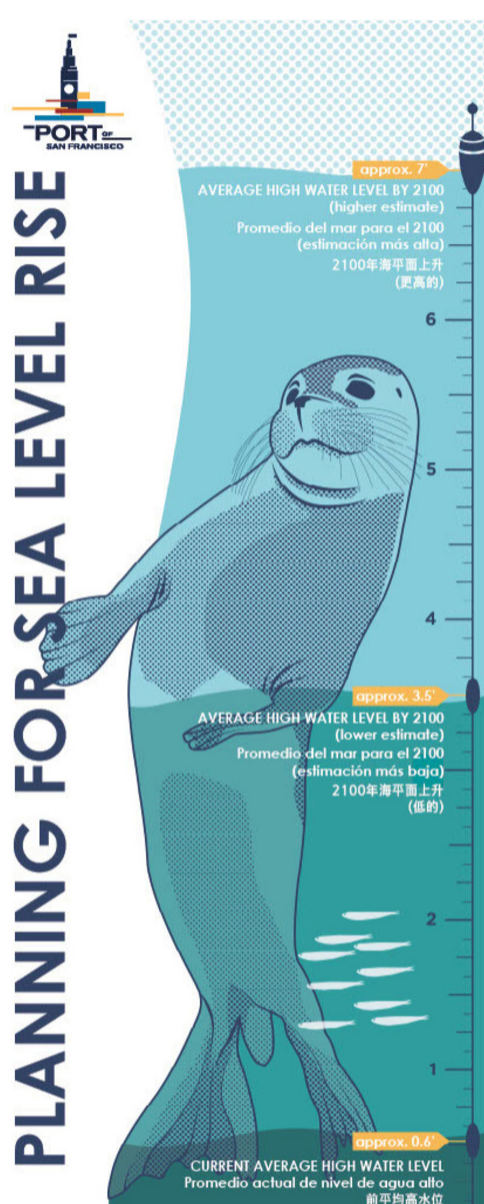
How high are sea levels expected to rise in San Francisco?

The Sea Level Rise Seal is a heights board to give an idea.

Today's average high water level is 0.6 feet. The average high water level by 2100 is estimated to be between 3.5 feet and 7 feet.

Get to know more about flooding and sea level rise at the WRP **Seismic and Flood Risk 101 webpage** and on the **Ocean Protection Council website**.

Explore more about the different flood risks along the waterfront with the **Waterfront Resilience Story Maps**.



Engineers Week 2022

Engineers Week 2022 is February 20 to 26. This year's theme, Reimagining the Possible, recognizes how engineers create new possibilities through innovation and technology. Join the conversation with #Eweek2022, #WhatEngineersDo and #WomeninSTEM. Learn how the Port's Waterfront Resilience Program is beginning to reimagine the future of the waterfront with **Embarcadero Early Projects**.



Honoring Black History Month

The Port is excited to celebrate Black History Month, an annual celebration of African Americans' achievements and significant contributions to U.S. history. The important and profound contributions of African Americans are worthy to celebrate beyond a month and throughout the year.

Visit the Port's **Twitter**, **Facebook**, and **Instagram** for stories and highlights shared throughout the month.



Celebrating Lunar New Year

The Port joined in celebrating the Lunar New Year February 1 to 15 and welcoming the Year of the Tiger. Lunar New Year is deeply rooted in history and celebratory tradition, and symbolizes a new start or a refresh in one's life, with hope for prosperity, wealth, and happiness. The Tiger is known as the "King of all animals" in China and symbolizes strength, power, and fearlessness.



COVID-19 Updates

The Port continues its efforts to safely operate the waterfront in full alignment with San Francisco's public health and safety guidance to protect against the spread of COVID-19.

See **updates from the SF Department of Public Health**. Additional COVID-19 information and resources below:

- **Sign up for vaccine appointments**
- **Look up testing information and testing options**
- **Read mayoral declarations**

sfport.com/wrp



Copyright © 2022 Port of San Francisco, All rights reserved.

You are receiving this email because you signed up on our website, at a community meeting, or through a Port of San Francisco staff member.

Share this email:



Manage your preferences | Opt out using TrueRemove®

Got this as a forward? Sign up to receive our future emails.

View this email online.

Pier 1 The Embarcadero
San Francisco, CA | 94111 US

This email was sent to .
To continue receiving our emails, add us to your address book.

Subscribe to our email list.



Back in Action: Outdoor Outreach Events

The Waterfront Resilience Program's in-person outreach is back in action! Many thanks to all who joined the Port and SF Planning staff for the Southern Waterfront Walking Tour on Saturday, March 12. The Port will also be popping up at citywide outdoor neighborhood events, from farmers markets to job fairs. Ongoing events will feature the waterfront activity book for children ([available for download](#)) and Port trivia with brian teasers like this one:



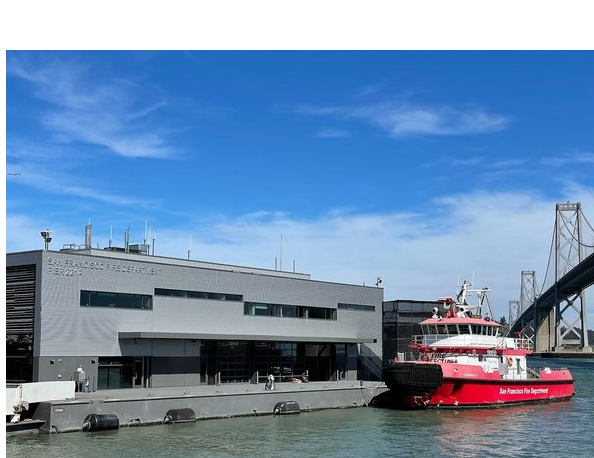
How many piers are located within the Port of San Francisco's 7.5 miles (12 km) of waterfront - from Heron's Head Park in the south to Fisherman's Wharf in the north?

- a) 12
- b) 24
- c) 36

Check your answer at the end of this email!

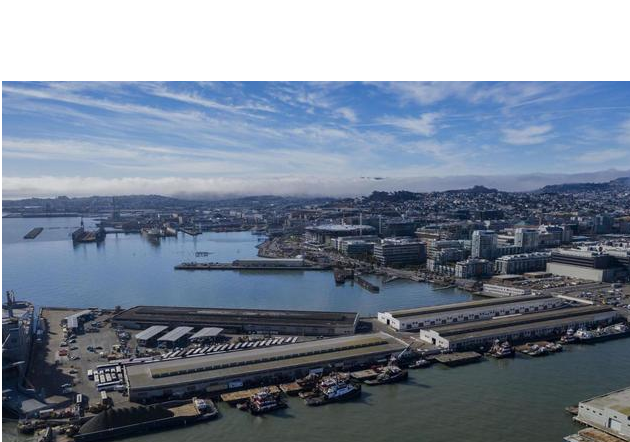
Floating Fire Station 35 Now Open

The floating Fire Station 35, located on the Embarcadero at Pier 22 1/2, opened on Thursday, March 10. The 173-by-96 foot float allows the station to ride the tides and was specially built to withstand sea level rise and natural disasters. Read more in the [San Francisco Chronicle](#).



Waterfront Plan: Draft Environmental Impact Report Public Notice

The Draft Environmental Impact Report (EIR) for the [Port of San Francisco Waterfront Plan](#) is posted and available for public review and comment. The public comment period runs from February 23 to April 24, 2022. The Waterfront Plan guides the use and improvement of all property owned by the Port. Plan goals and policies were updated following a public process led by the Waterfront Plan Working Group.

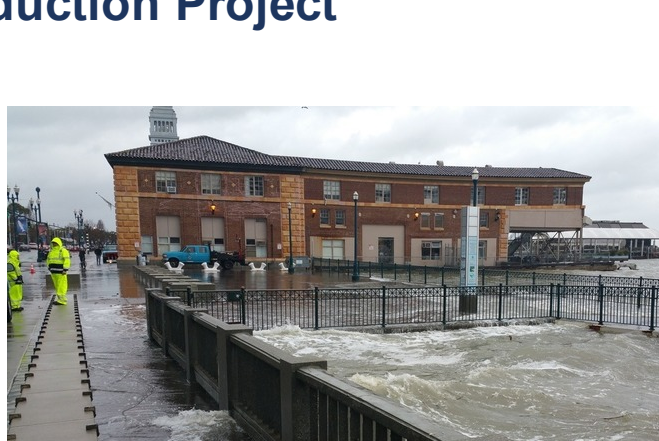


There will be a Planning Commission public hearing on the Waterfront Plan on Thursday, March 24. Information on Planning Commission remote hearings is [available here](#).

The updated Plan's environmental review process is required under the California Environmental Quality Act (known as CEQA, pronounced, "sequaw"). The San Francisco Planning Department is the City's CEQA lead agency and has published the Draft EIR. To review the Draft EIR, visit the [Planning Department webpage](#) and search for "Waterfront Plan." Please direct any questions about the Draft EIR or CEQA process to CPC.WaterfrontEIR@sfgov.org.

Spotlight on Embarcadero Early Projects: Pier 5 to Pier 22 1/2 Near-Term Coastal Flood Risk Reduction Project

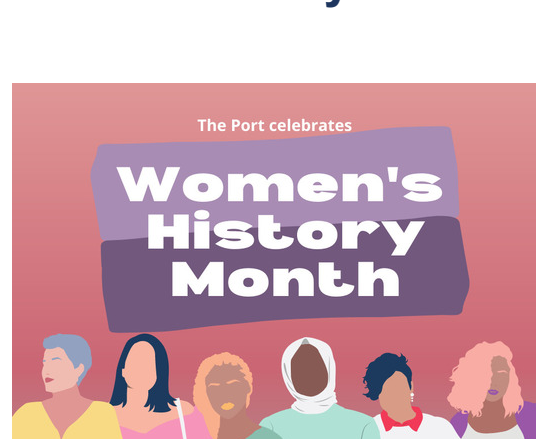
The Port has identified 23 [Embarcadero Early Projects](#), which are near-term actions focused on life safety and citywide disaster response capabilities to address areas with high earthquake and sea level rise risk along the Embarcadero Waterfront.



Get to know more about these first steps toward long-term, waterfront-wide resilience with the [Pier 5 to Pier 22 1/2 Near-Term Coastal Flood Risk Reduction Project](#). This project focuses on protecting regional transit and waterfront neighborhoods from coastal flooding caused by sea level rise while maintaining a thriving waterfront as longer-range plans are developed.

Celebrating National Women's History Month

The Port joins in celebrating March as National Women's History Month, commemorating and encouraging the study, observation, and celebration of the vital role of women in American history. The Port recognizes and honors the contributions - past, present, and future - of women in creating a diverse waterfront.



Port of San Francisco Director Elaine Forbes is one of 12 women Port Directors of the 115 public ports in the U.S.

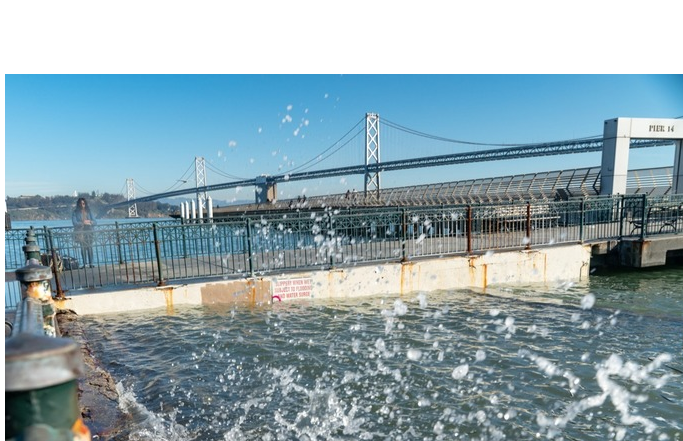
Visit the Port's [Twitter](#), [Facebook](#), and [Instagram](#) for stories and highlights shared throughout the month.

Resilience in the News

Keep up with some of the latest resilience news articles making headlines:

["Expect West Coast seas to rise by 8 inches by 2050 - it'll be even worse on the East Coast."](#) (San Francisco Chronicle)

["Time Is Running Out to Avert a Harrowing Future, Climate Panel Warns."](#) (New York Times)



["Aumento del nivel del mar: grandes inundaciones podrían afectar a varias áreas de San Francisco."](#) (Telemundo)

COVID-19 Updates

The Port continues its efforts to safely operate the waterfront in full alignment with San Francisco's public health and safety guidance to protect against the spread of COVID-19.

See [updates from the SF Department of Public Health](#). Additional COVID-19 information and resources below:

- [Sign up for vaccine appointments](#)
- [Look up testing information and testing options](#)
- [Read mayoral declarations](#)

Port Trivia Answer

How did you do on the Port trivia question posted above?

How many piers are located within the Port of San Francisco's 7.5 miles (12 km) of waterfront - from Heron's Head Park in the south to Fisherman's Wharf in the north?

- a) 12
- b) 24
- c) 36

Correct Answer: c) There are **36 piers** located within the Port of San Francisco's 7.5 miles (12 km) of waterfront.

For more fun activities to learn about the Port, earthquakes, and sea level rise, visit the [Waterfront Resilience Family Activities and Learning page](#).

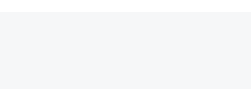
sfport.com/wrp



Copyright © 2022 Port of San Francisco, All rights reserved.

You are receiving this email because you signed up on our website, at a community meeting, or through a Port of San Francisco staff member.

Share this email:



[Manage](#) your preferences | [Opt out](#) using TrueRemove®

Got this as a forward? [Sign up](#) to receive our future emails.

View this email [online](#).

Pier 1 The Embarcadero
San Francisco, CA | 94111 US

This email was sent to .

To continue receiving our emails, add us to your address book.

[Subscribe](#) to our email list.



1906 Earthquake Anniversary

Monday marks the 116th anniversary of the 1906 earthquake. At 5:12 AM on April 18, 1906, the great earthquake sent tremors throughout the Bay Area. Shaking lasted up to a minute and the quake was felt in Oregon, Nevada, and Los Angeles.

Learn more about the 1906 earthquake and the current earthquake and flood risks facing the waterfront on the WRP's [Seismic and Flood Risk 101 page](#).



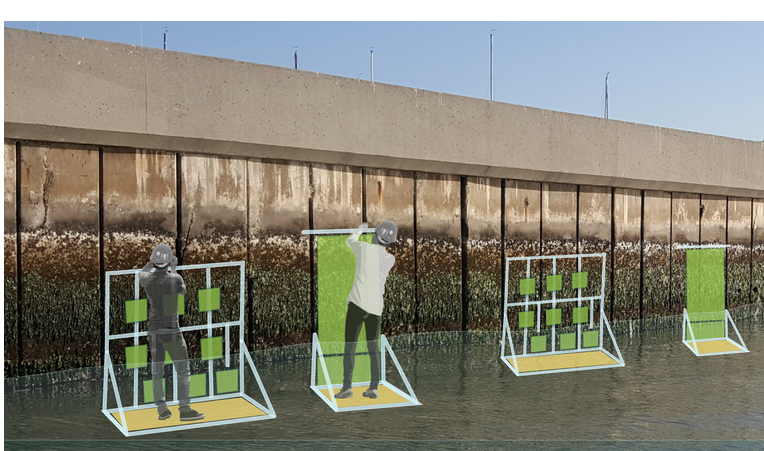
April Is Climate Action Month

April also marks San Francisco's fourth annual Climate Action Month. In late 2021, Mayor Breed and the Department of the Environment released San Francisco's Climate Action Plan (CAP). As of 2019, San Francisco has cut its emissions by 40% since 1990. The City has a goal of net zero emissions by 2040. Read more about the CAP [here](#). Find out more and get involved with [SF Environment's calendar](#) of more than 50 free online and in-person events being held throughout San Francisco.



Living Seawall Pilot Launch

With the Living Seawall Pilot, the Port is testing and studying exciting, innovative engineering with nature concepts from around the world to learn how we can make San Francisco's seawalls more ecologically friendly in the future.



Traditional seawalls are barren, exposed concrete surfaces unlike natural marine habitats and may benefit invasive species over native species. This two-year pilot study, designed by the Smithsonian Environmental Research Center (SERC) in collaboration with Port Engineering and Port Maintenance staff, is an opportunity to test and evaluate methods for fostering higher quality habitats to promote biodiversity and for native Bay species. Results could be incorporated into future earthquake safety and flood risk reduction projects in San Francisco and around the world.

Learn more at sfport.com/wrp/living-seawall.

Port Trivia

How likely is it that a major earthquake will happen in the Bay Area in the next 25 years?

- a) A 2% chance
- b) A 46% chance
- c) A 72% chance

Check your answer at the end of the email!

Spotlight on Embarcadero Early Projects: Ferry Building Seawall and Substructure Earthquake Reliability Project

Get to know more about these first steps toward long-term, waterfront-wide resilience with the [Ferry Building Seawall and Substructure Earthquake Reliability Project](#). This project is a first step for improving earthquake safety and disaster response by retrofitting the Seawall and substructure and includes the development of a state-of-the-art engineering model to test strengthening concepts and longer-range adaptation strategies.



Take a Walk on the Waterfront with Us

Thank you to all who joined us for the Southern Waterfront Walking Tour in March. Similar events are being planned for Saturday, May 14, and quarterly for the remainder of the year. We look forward to continuing to share information about measures being taken to address sea level rise and seismic impacts. Be on the lookout for more information about upcoming Southern Waterfront Walking Tours on the Port's social media.



Port Trivia Answer

How did you do on the Port trivia question posted above?

How likely is it that a major earthquake will happen in the Bay Area in the next 25 years?

- a) A 2% chance
- b) A 46% chance
- c) A 72% chance

Correct Answer: c) There is a **72% chance** that a major earthquake will happen in the Bay Area in the next 25 years.

For more fun activities to learn about the Port, earthquakes, and sea level rise, visit the [Waterfront Resilience Family Activities and Learning page](#).

sfport.com/wrp



Copyright © 2022 Port of San Francisco, All rights reserved.

You are receiving this email because you signed up on our website, at a community meeting, or through a Port of San Francisco staff member.

Share this email:



[Manage](#) your preferences | [Opt out](#) using TrueRemove®

Got this as a forward? [Sign up](#) to receive our future emails.

View this email [online](#).

Pier 1 The Embarcadero
San Francisco, CA | 94111 US

This email was sent to .
To continue receiving our emails, add us to your address book.

[Subscribe](#) to our email list.



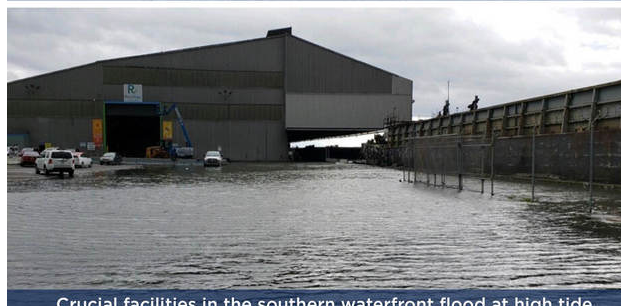
We Want to Hear from You!

From Heron's Head Park to Fisherman's Wharf, the Port of San Francisco's iconic waterfront has a history that is rich with innovative adaptation. To defend San Francisco from current and future flood risk and to address urgent earthquake risks, we will need to adapt once again. This means changes to our waterfront.

Take the **Waterfront Resilience Program Survey** and share your feedback on what changes you would support in creating this next chapter in our waterfront's history. You'll weigh in on five examples from major cities worldwide who have adapted to defend their waterfronts.



The Embarcadero floods at high tide



Crucial facilities in the southern waterfront flood at high tide

Community feedback from the Waterfront Resilience Program Survey will be key as the Port and other City partner agencies develop a locally-endorsed Waterfront Wide Adaptation Strategy by early 2023, an important step to accessing state and federal funding opportunities. The development of these Adaptation Strategies is guided by the Port's five-plus years of community engagement and feedback – and we want to hear from you again!

Take the Survey by June 3, 2022.

Thank You for Joining Us

Many thanks to all who joined us May 14 for another Southern waterfront walking tour. These are great community events to share information about the Port's and the City's combined resilience efforts and to hear from community members about their waterfront resilience questions and priorities. Sign-up for upcoming waterfront walking tours on **Eventbrite**.



Catching Headlines: Living Seawall Pilot Launch

The Port's publication of the Living Seawall Pilot - planned to launch this summer - got picked up by:

- **San Francisco Chronicle**
- **Kron 4**
- **SF Examiner**

Learn more about the pilot, conducted in partnership with the Smithsonian Environmental Research Center (SERC), to test and evaluate engineering with nature concepts at the **the Living Seawall Pilot webpage**.



Port Trivia

Approximately how old is San Francisco's Embarcadero Seawall?

- a) Over fifty years old
- b) Over one hundred years old
- c) Over two hundred years old

Check your answer at the end of the email!

Spotlight on Embarcadero Early Projects: Pier 15 Bulkhead Wall and Wharf Substructure Earthquake Safety Retrofit Project

Get to know more about these first steps toward long-term, waterfront-wide resilience with the **Pier 15 Bulkhead Wall and Wharf Substructure Earthquake Safety Retrofit Project**. Pier 15 is an historic finger pier, home to the popular Exploratorium, and location for small- and medium-sized vessels berths that can support earthquake response. This project focuses on easily implementable safety improvements by retrofitting the wharf substructure and utilities to better move with the Embarcadero Seawall. Read more about the **Embarcadero Early Projects** here.



New Release: Waterfront Time-Lapse Video

Watch the evolution of the waterfront unfold with the **newly released time-lapse video!** San Francisco's three-mile Embarcadero Seawall took a full 37 years to build - and borrowed a bit of rock from nearby Telegraph Hill. The Seawall transformed the city, laying the foundation for the thriving waterfront we know and love today.



Port Trivia Answer

How did you do on the Port trivia question posted above?

Approximately how old is San Francisco's Embarcadero Seawall?

- a) Over 50 years old
- b) Over 100 years old
- c) Over 200 years old

Correct Answer: b) San Francisco's Embarcadero Seawall is **over 100 years old**.

For more fun activities to learn about the Port, earthquakes, and sea level rise, visit the **Waterfront Resilience Family Activities and Learning page**.

sfport.com/wrp



Copyright © 2022 Port of San Francisco, All rights reserved.

You are receiving this email because you signed up on our website, at a community meeting, or through a Port of San Francisco staff member.

Share this email:



Manage your preferences | Opt out using TrueRemove®
Got this as a forward? Sign up to receive our future emails.

View this email [online](#).

Pier 1 The Embarcadero
San Francisco, CA | 94111 US

This email was sent to .
To continue receiving our emails, add us to your address book.

[Subscribe](#) to our email list.



Thank You! Community Feedback to the Waterfront Resilience Program

Thank you to the nearly 1,000 participants who shared feedback through this summer's Waterfront Resilience Program Survey. The survey received more than 3,000 comments to the five examples from major cities worldwide who have adapted to defend their waterfront.

Across the five examples, we heard:

- Increase space for open space and parks
- Prioritize nature and habitats
- Maintain a connection to the waterfront and increase accessibility
- Address concerns about displacement and equity

A recap from the survey was shared as part of the [informational presentation](#) on the process for developing Adaptation Strategies made at the [June 14 Port Commission meeting](#). Feedback from the survey adds to five-plus years of community engagement on the waterfront and will continue to be key as the Port and other City partner agencies develop a locally endorsed Waterfront Adaptation Strategy by early 2023. There will be further community engagement on the Waterfront Adaptation Strategy this year. Stay tuned for more!



Join Us Tomorrow: Mission Creek / Mission Bay Walking Tour

Join us tomorrow, **Saturday, July 16, at 10:00 AM** for the first Mission Creek / Mission Bay waterfront walking tour of the year. These are great community events to share information about the Port's and the City's combined resilience efforts and to hear from community members about their waterfront resilience questions and priorities. Sign up and learn more on [Eventbrite](#).



Happy Anniversary: EcoCenter Turns 12

The EcoCenter at Heron's Head Park turned 12 this June. A celebration was hosted on June 25 with free food, activities, and entertainment to celebrate the Bayview/Hunter's Point community and legacy of the [EcoCenter](#). Last year, the EcoCenter received UNICEF's 2021 Cities Inspire Award in the safe, clean, sustainable, and child-friendly environments category.



Port Trivia

The word **Resilience** for San Francisco's waterfront means:

- Recovering and reopening faster from a natural disaster
- Reducing the impact of sea level rise
- Protecting the Bay's ecology and ecosystems
- Planning for economic growth
- All of the above

Check your answer at the end of the email!

Spotlight on Embarcadero Early Projects: Pier 9 Bulkhead Wall and Wharf Substructure Earthquake Safety Retrofit Project

Get to know more about these first steps toward long-term, waterfront-wide resilience with the [Pier 9 Bulkhead Wall and Wharf Substructure Earthquake Safety Retrofit Project](#). Pier 9 is an historic finger pier housing diverse maritime offices, including the San Francisco Bar Pilots and Water Emergency Transportation Authority (WETA), both of which are important for disaster response. This project focuses on improvements to safety by retrofitting the wharf substructure and utilities to better accommodate earthquake movement of the Seawall. Read more about [Embarcadero Early Projects here](#).



Port Trivia Answer

How did you do on the Port trivia question posted above?

The word **Resilience** for San Francisco's waterfront means:

- Recovering and reopening faster from a natural disaster
- Reducing the impact of sea level rise
- Protecting the Bay's ecology and ecosystems
- Planning for economic growth
- All of the above

Correct Answer: e) **All of the above**. Resilience for San Francisco's waterfront means recovering faster from natural disasters, reducing impacts from sea level rise, protecting the Bay's ecosystems and planning for economic growth.

For more fun activities to learn about the Port, earthquakes, and sea level rise, visit the [Waterfront Resilience Family Activities and Learning page](#).

sfport.com/wrp



Copyright © 2022 Port of San Francisco, All rights reserved.

You are receiving this email because you signed up on our website, at a community meeting, or through a Port of San Francisco staff member.

Share this email:



[Manage](#) your preferences | [Opt out](#) using TrueRemove®

Got this as a forward? [Sign up](#) to receive our future emails.

View this email [online](#).

Pier 1 The Embarcadero
San Francisco, CA | 94111 US

This email was sent to .

To continue receiving our emails, add us to your address book.

[Subscribe](#) to our email list.



An Update on Embarcadero Early Projects

Embarcadero Early Projects address the areas of highest earthquake and sea level rise risks along the Embarcadero waterfront. They are near-term actions, focused on improving life safety and citywide disaster response capabilities, and are the first step toward building long-term, waterfront-wide resilience.

Last winter, the Port recommended 16 Embarcadero Early Projects to advance through the Proposition A Seawall Earthquake Safety Bond. So far, the Port has completed a Needs Assessment Report on 6 projects, including Pier 9, Pier 15, and the Ferry Building. Several of these will be advanced to Alternatives Analysis and additional projects selected for Needs Assessment Reports. The Port plans to fast track one or more Embarcadero Early Project to be in construction by 2024.

Learn more with the [San Francisco Chronicle article](#).

Join Us! Upcoming Waterfront Walking Tours

Join Port and City staff for a waterfront walking tour. Upcoming tours include:

Embarcadero - Wednesday, September 21, 5:00-6:30 PM

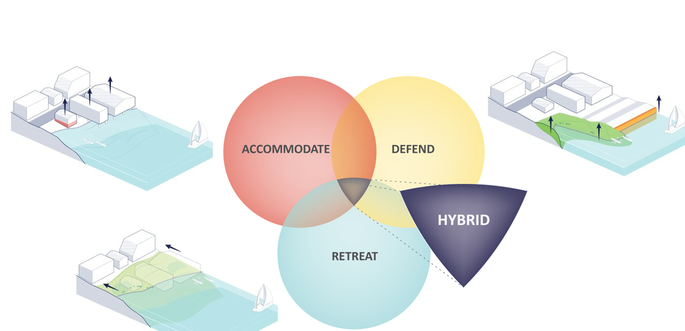
Islais Creek / Bayview - Saturday, September 24, 10:00 AM-12:00 PM

These are great community events to share information about the Port and the City's combined resilience efforts and to hear from community members about their waterfront resilience questions and priorities. Click the Eventbrite links for [Embarcadero](#) and [Islais Creek / Bayview](#) to sign up and learn more.



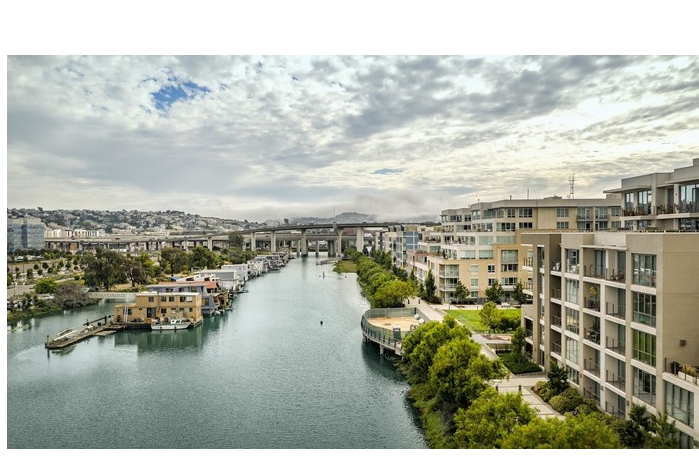
Draft Waterfront Adaptation Strategies

The Port of San Francisco is currently developing high-level Draft Waterfront Adaptation Strategies to adapt and protect the City from future flood and seismic risks through a collaborative interagency process. Building on five years of community feedback, including a citywide survey about adaptation approaches, the Port convened focus groups last month comprised of leaders of local community-based organizations to support the development of the draft strategies. The Port plans to release the Draft Waterfront Adaptation Strategies for public input this fall. [Learn more here](#).



Thank You, Islais Creek and Bayview Community Partners

Thank you to our community partners in Islais Creek and the Bayview for joining the Port in a series of focus groups in August on communications for the Draft Waterfront Adaptation Strategies. Your feedback is helping the Port develop community-focused materials on important waterfront resilience topics. Your input is building on this summer's Waterfront Resilience Program survey, which had nearly 1,000 respondents who left more than 3,000 comments on five worldwide examples of how other cities have adapted to defend their waterfronts.



Engaging Youth on Waterfront Resilience

Thank you, Greenagers, for joining the Port and City staff for a waterfront walking tour on August 12! The tour focused on the Mission Creek / Mission Bay area. Greenagers is a youth group run by SF Rec and Park located at the Eco Center at Heron's Head Park.



Citywide In-person Outreach Highlights

As summer wraps and the calendar turns to fall, we'd like to thank the more than 1,000 community members who have engaged with WRP at 18 outdoor in-person community events so far this year. The Port is grateful to be back at these citywide events as public health and safety allows. We look forward to more outdoor in-person events before the end of the year!

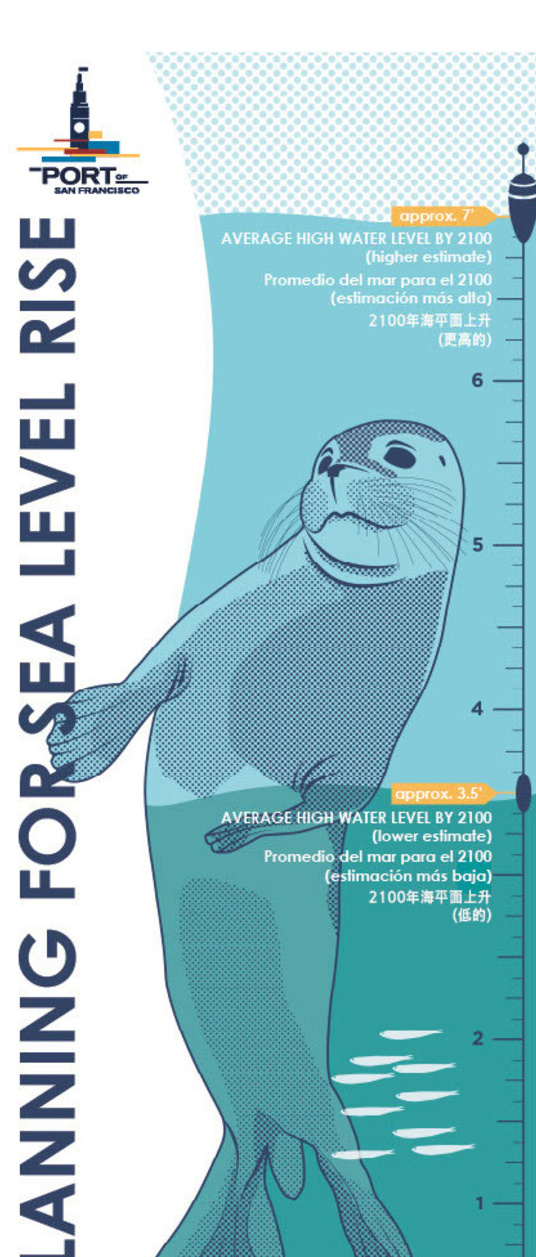


We Hear You: Frequently Asked Questions

You've asked - and we've got answers! There is a lot going on with the Waterfront Resilience Program, and some of the information can be complex. Here is a sample from some of the frequently asked questions from community members during outreach.

What are sea level rise projections for San Francisco?

The Port is currently planning that sea level rise could be between 3 and 7 feet by 2100, based on projections published by the California Ocean Protection Council. The Port continually monitors the best available science and adjusts its projections as needed. Future sea level rise directly depends on global carbon emissions and global climate action. An increasingly warm planet means less polar ice, warmer oceans, and higher water levels.



Celebrating National Hispanic Heritage Month

The Port celebrates National Hispanic Heritage Month from September 15 to October 15. This year's theme of "Unidos: Inclusivity for a Stronger Nation" encourages representing all voices. The Port aspires to make equity, diversity, and inclusion a part of all WRP work to build a waterfront that is inviting for all. This year's campaign for poster is submitted by Ms. Irene Matos Chan, Senior IT Manager in the Square Tech Computer Repair and Training Center for the Castle Square Tenants Organization.



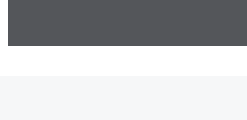
sfport.com/wrp



Copyright © 2022 Port of San Francisco. All rights reserved.

You are receiving this email because you signed up on our website, at a community meeting, or through a Port of San Francisco staff member.

Share this email:



[Manage](#) your preferences | [Opt out](#) using TrueRemove®
Got this as a forward? [Sign up](#) to receive our future emails.
View this email [online](#).

Pier 1 The Embarcadero
San Francisco, CA | 94111 USA

This email was sent to .
To continue receiving our emails, add us to your address book.

[Subscribe](#) to our email list.



Draft Waterfront Adaptation Strategies Released

The Port of San Francisco, in partnership with the U.S. Army Corps of Engineers and San Francisco city agencies, has developed seven Draft Waterfront Adaptation Strategies based on over five years of public engagement. This is an impactful moment for the City as we plan for the future and address sea level rise risk now. Learn more at sfport.com/wrp/waterfront-adaptation.

With the Draft Waterfront Adaptation Strategies now available for public feedback, the goal is to reach a Draft Waterfront Adaptation Plan (Tentatively Selected Plan) by summer 2023. The Draft Plan will identify a preferred approach to reduce flood risks from sea level rise and extreme storms and provide an opportunity to invest in and bring public benefits to San Francisco's waterfront.

Explore Draft Adaptation Strategies Online

Introducing the new **Draft Waterfront Adaptation Strategies StoryMaps**, interactive digital storytelling and surveys!

Take a virtual tour of the waterfront, view the Draft Adaptation Strategies, and provide your input.



Join Us! Upcoming Fall Community Events

Join Port and City staff this fall for a variety of online and in-person community events.

Fall events include a series of digital community meetings, an Islais Creek / Bayview community mixer and open house, and waterfront walking tours.

All of these events will share information about the Draft Waterfront Adaptation Strategies - different ways for the City to create a resilient, sustainable, and equitable waterfront for the next 100 years.

The different risks, topography, and historic development of the waterfront means that we will need to use a combination of approaches.

See the full schedule and sign up for events at sfport.com/wrp/our-waterfront.



Media Corner: WRP Videos and Headlines

The Waterfront Resilience Program has been featured recently in videos and in headlines. Catch up with the latest coverage:

- [Adaptation Strategies Explainer Video](#)
- [San Francisco Chronicle](#)

Remembering Loma Prieta

October 17 marks the 33-year anniversary of the Loma Prieta earthquake. Centered about 60 miles from the Embarcadero Seawall along the San Andreas Fault to the south near Santa Cruz, the 6.9 magnitude earthquake was smaller than the 1906 earthquake. Effects were seen in the East Bay and in the nearshore areas of Monterey Bay. As always at this time of year, we reflect on the indelible changes from the earthquake and the Port's commitment to working with City partners to continue to improve earthquake safety and emergency response recovery.



Learn more about seismic risk at sfport.com/wrp/seismic-flood-101.

sfport.com/wrp



Copyright © 2022 Port of San Francisco, All rights reserved.

You are receiving this email because you signed up on our website, at a community meeting, or through a Port of San Francisco staff member.

Share this email:



[Manage](#) your preferences | [Opt out](#) using TrueRemove®

Got this as a forward? [Sign up](#) to receive our future emails.

View this email [online](#).

Pier 1 The Embarcadero
San Francisco, CA | 94111 US

This email was sent to .
To continue receiving our emails, add us to your address book.

[Subscribe](#) to our email list.



A Look Back on a Busy 2022

This year, the Port was delighted to continue a wide range of community outreach from tabling at community events around the city, to continuing the popular waterfront walking tours to a series of digital community meetings this fall. The first in-person, Port-hosted community events since March 2020 were also held this fall with the Southern Waterfront Community Mixer and Community Open House.

Thank you to all who came out to support and engage with Port and City staff during these events! Your feedback is essential to the City as we work to create a resilient, sustainable, and equitable waterfront for the next 100 years.



We Hear You: Draft Waterfront Adaptation Strategies Feedback

Since the public release of the Draft Waterfront Adaptation Strategies in mid-October, the Port has connected with hundreds of community members over 16 public events to hear your questions and comments. Survey responses from the **StoryMaps** – interactive digital storytelling – have shared additional input.

Feedback received from these community events will inform the development of a Draft Waterfront Adaptation Plan (Tentatively Selected Plan), which is slated to be released in summer 2023. Stay tuned for more engagement in the new year!



Thank You Community Partners!

A big thank you to all community partners who joined and helped get the word out on the Southern Waterfront Community Mixer and Community Open House. Hosted at Radio Kitchen Africa and the newly opened Southeast Community Center, these in-person events were wonderful opportunities to share the Draft Waterfront Adaptation Strategies, connect with attendees, and hear your priorities for waterfront resilience.



A Royal Walk with the King Tides

As the seasons turn, we're getting close to the winter King Tides, which are December 23 and 24, 2022, and January 21 and 22, 2023. "King Tide" is a popular, non-scientific term people use to describe exceptionally high tides. They are an important reminder of the impacts sea level rise will have on our waterfront.

The Port's Waterfront Resilience team is partnering with the Exploratorium once again to host a two free events — the King Tides walks— on Saturday January 21 from 10-11 am, and Sunday, January 22 from 11-12 am. Come gather between Pier 3 and Pier 5 on the Bay side of the Embarcadero to learn more about sea level rise and its impact on our waterfront!

For more information, contact Lori Lambertson: llambertson@exploratorium.edu



Find Work With the Waterfront Resilience Program

The Port has identified 23 **Embarcadero Early Projects** that will ensure the waterfront, and its critical regional and citywide assets are resilient to hazards - and are increasingly accessible to everyone it serves.

Six of these projects are currently active in Pre-Design. These projects are the best positioned to move into final design and construction as early as 2024, providing opportunities for Local Business Enterprises (LBEs) and Workforce Contractors. Learn more and sign up to receive updates at sfport.com/wrp/lbe.

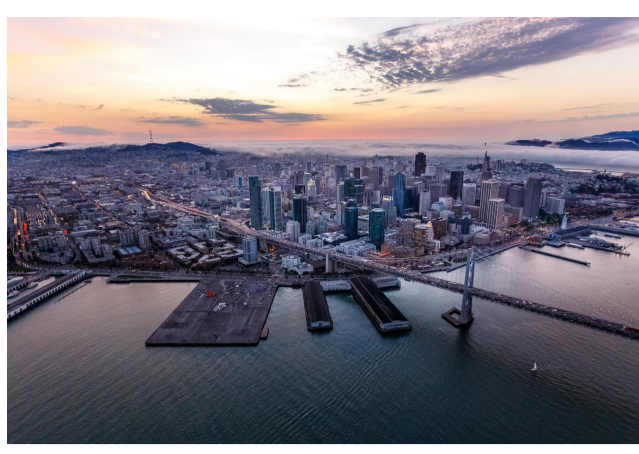


What To Expect in 2023

Next year, the Port will continue community engagement as part of developing the Draft Waterfront Adaptation Plan (Tentatively Selected Plan), to be released in summer 2023.

The Port will also continue leading the **Living Seawall Pilot** and advancing **Embarcadero Early Projects**.

We look forward to seeing you in 2023!



sfport.com/wrp



Copyright © 2022 Port of San Francisco, All rights reserved.

You are receiving this email because you signed up on our website, at a community meeting, or through a Port of San Francisco staff member.

[Manage](#) your preferences | [Opt Out](#) using TrueRemove™
Got this as a forward? [Sign up](#) to receive our future emails.
View this email [online](#).

Pier 1 The Embarcadero | San Francisco, CA 94111 US

This email was sent to .
To continue receiving our emails, add us to your address book.

[Subscribe](#) to our email list.