

# MISSION ROCK

# Mission Rock Updates

Southern Advisory Committee Meeting  
December 7, 2022



TISHMAN SPEYER



# Construction

---

March 2022



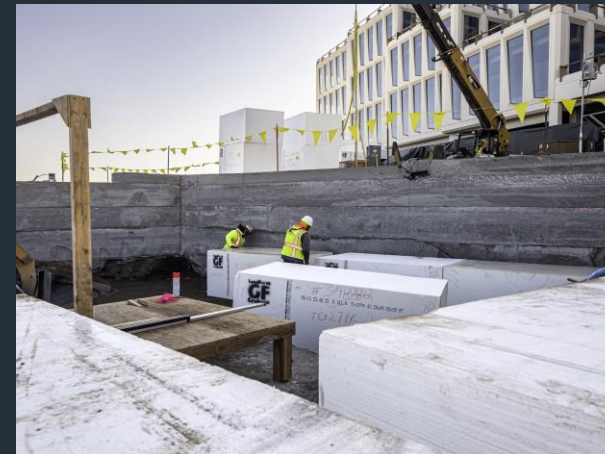
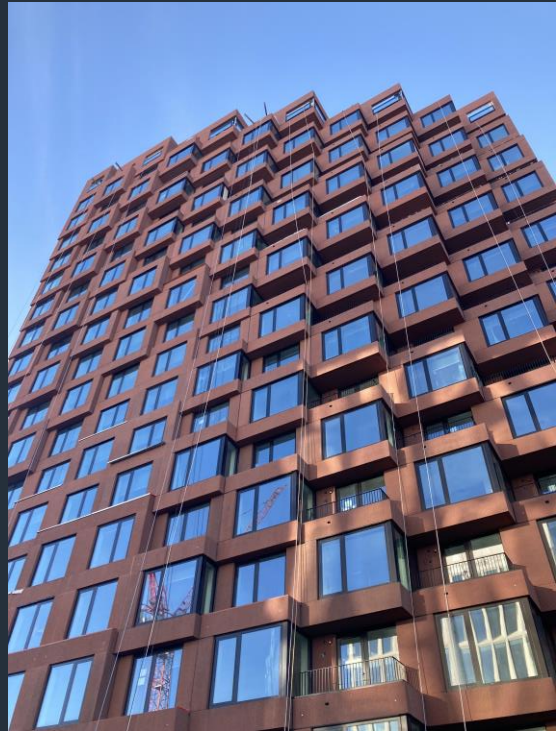
December 2022



# Construction

Parcel B (life science / office)

Parcel F (residential)



Parcel A (residential)

Parcel C (Visa's HQ)

China Basin Park

# Workforce Update

- LBE Awarded Value: \$124.16M
- Minority-Owned + Woman-Owned LBE's: \$85,579,895 (~70% of LBE Awards)
- LBE Contract Highlights:
  - YADEJS (MBE) – Site Clean and Final Clean
  - DeHaro Ramirez (MBE) – Site Concrete
  - 415 Electric (MBE) – HVAC Controls
  - Big Pipe (MBE) – HVAC Piping
  - BEI Steel (WBE) – Structural Steel
  - Spencer Masonry (MBE/WBE) – CMU

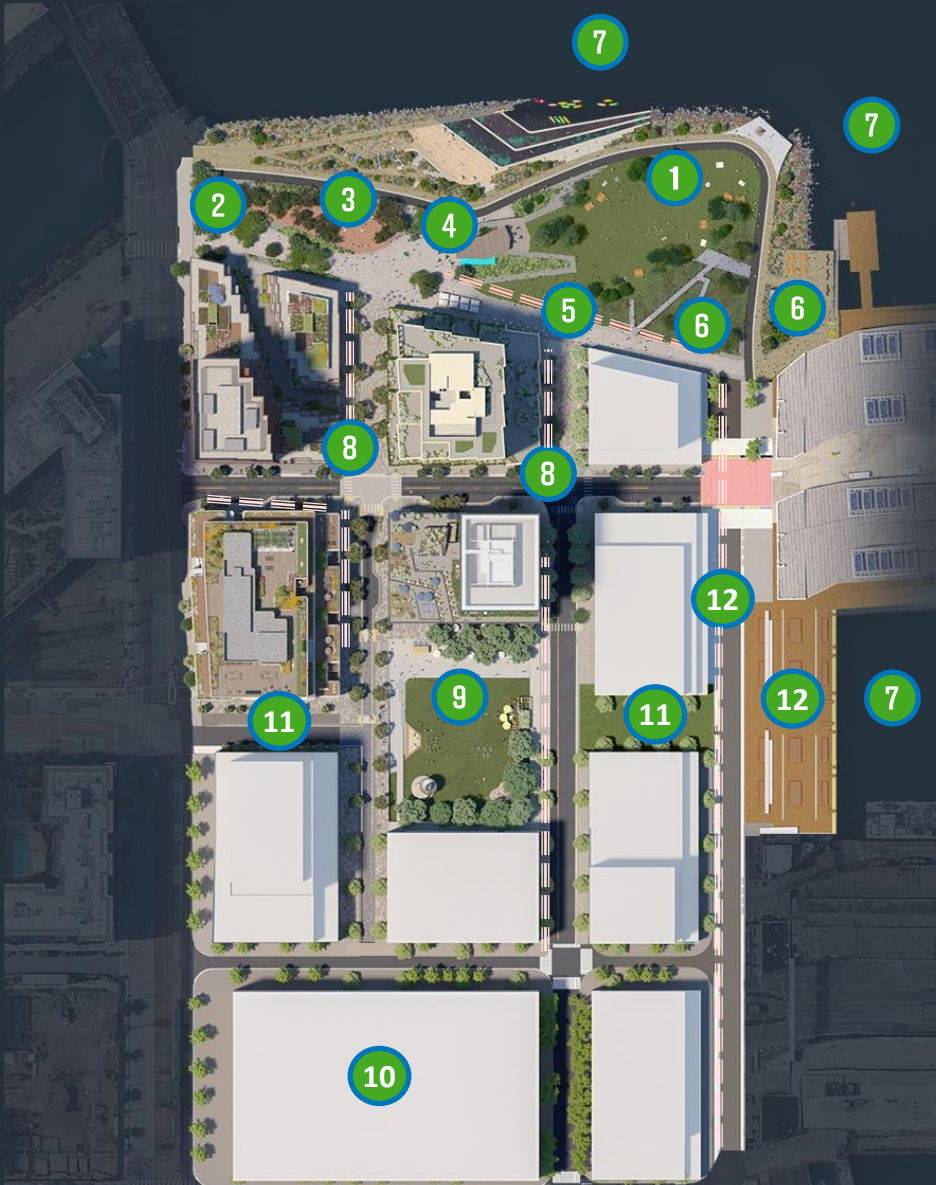


# Public Art Plan Adoption

---

Plan Purpose - The purpose of Mission Rock's Public Art Plan is to define goals and develop a framework for selecting, commissioning, siting and prioritizing permanent and temporary installations, along with artistic programming in Mission Rock's public realm through all development phases and beyond

# PUBLIC ART SITE SUMMARY



- 1 Great Lawn
  - 2 Welcoming Plaza
  - 3 Lifted Grove
  - 4 Central Plaza
  - 5 Promenade
  - 6 Knuckle Wharf / Stormwater Garden
  - 7 Waterfront
  - 8 Street Life Zones
  - 9 Mission Rock Square
  - 10 Parking Garage
  - 11 Channel Street
  - 12 Terry Francois Blvd / Channel Wharf
- Interim Conditions**  
installed in not-yet-developed areas of the project site
- Building Facades**  
Micro-activations, dispersed throughout district



# Public Art Plan - Approval + Review + Public Engagement

---

- During each development phase, MRP will propose the budget, art sites and solicitation methods to furnish public art in the public realm for that phase, for SF Port review and approval
- Southern Advisory Committee and SF Port Commission will be presented proposed permanent public artworks funded by the Mission Rock horizontal development budget for review and comment
- Additional selection committees or advisory groups, composed of the members of the public and/or arts experts, will be formed and utilized as needed to provide additional review and consultation



# Public Art Plan – Key Goals

---

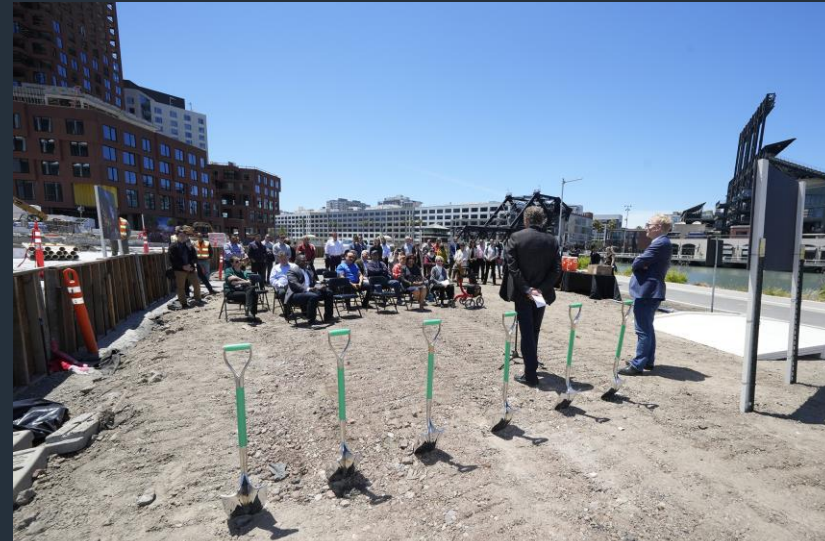
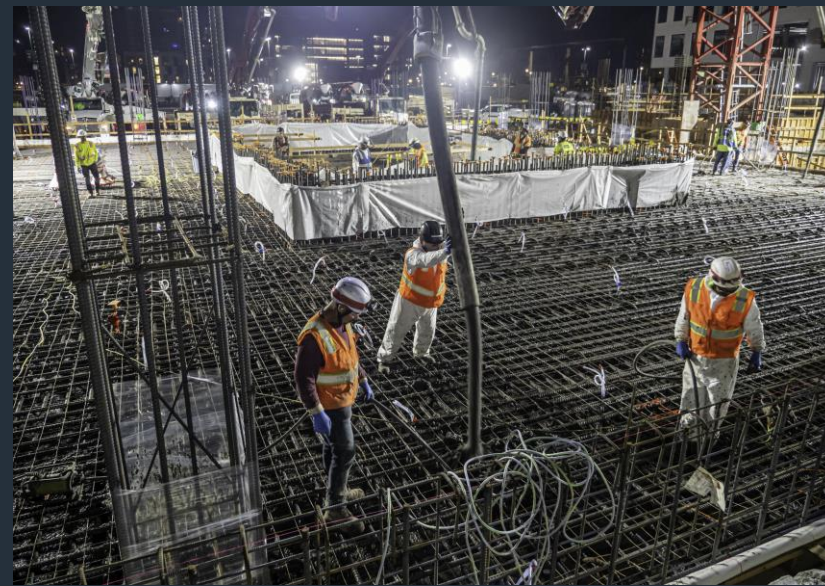
- Seek the highest level of creative excellence & artistic execution
- Create a dynamic park and public open space network through site-specific artworks
- Deepen partnerships and collaborations
- Highlight art & cultural assets in everyday user experience

# Public Art Plan – Key Selection Criteria

---

- Support the overall vision of the Mission Rock Public Art Plan, Artist qualifications, Artist + artistic diversity
- Feedback from BCDC staff, SF Port Director, Port Commission and community advisory committees
- Cultural equity
- Artistic impact and audience reach
- Artwork longevity and maintenance needs
- Visual impact
- Permitting requirements
- Funding and capacity

# 2022 Recap



# MISSION ROCK



TISHMAN SPEYER

