



SFMTA

Illinois Street Sidewalk Safety and Gap Closure

Illinois Street (19th to 20th Streets and 18th to Mariposa Streets)

**Port of San Francisco
Southern Advisory Committee**

**David Beaupre, Port of SF
Keanway Kai, SFMTA**

February 23, 2022

EXISTING PROJECT SITE

- 1) Existing sidewalk on east side of Illinois Street between 19th and 20th Streets.



EXISTING PROJECT SITE

- Existing sidewalk on east side of Illinois Street between Mariposa and 18th Streets.



PROJECT HISTORY

Complete Equitable and Safe Access

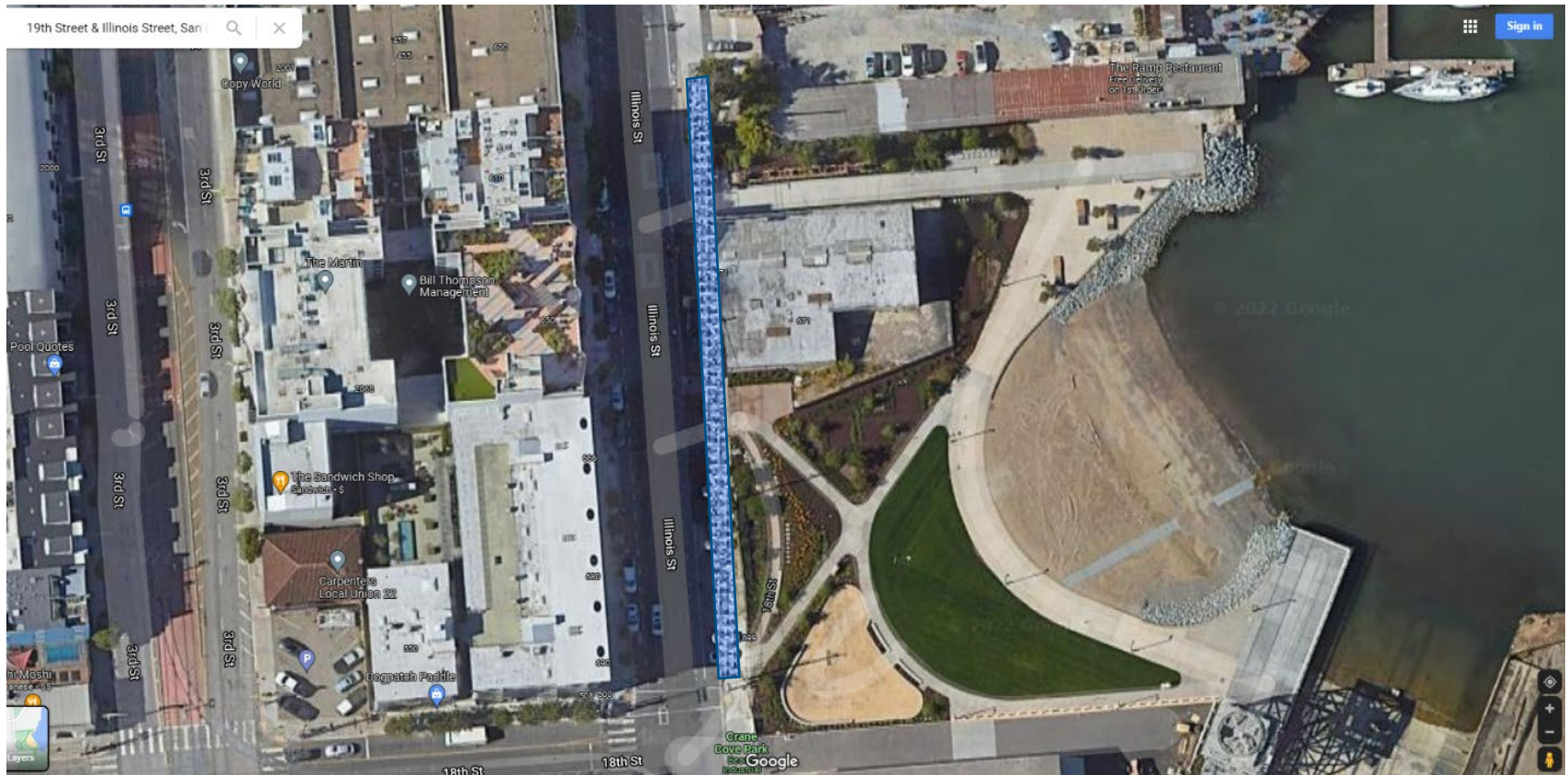
- 1) Better Streets Plan - 2010
- 2) Pier 70 Preferred Master Plan - 2010
- 3) Blue Greenway Planning and Design Guidelines - 2012
- 4) Crane Cove Park Master Plan - 2016
- 5) Dogpatch Central Waterfront Plan - 2018
- 6) Complete Streets/ADA Access
- 7) SF Bay Trail
- 8) BCDC permit

PROJECT LIMITS

- 1) East side of Illinois Street between 19th and 20th Streets.
- 2) East side of Illinois Street between Mariposa and 18th Streets.

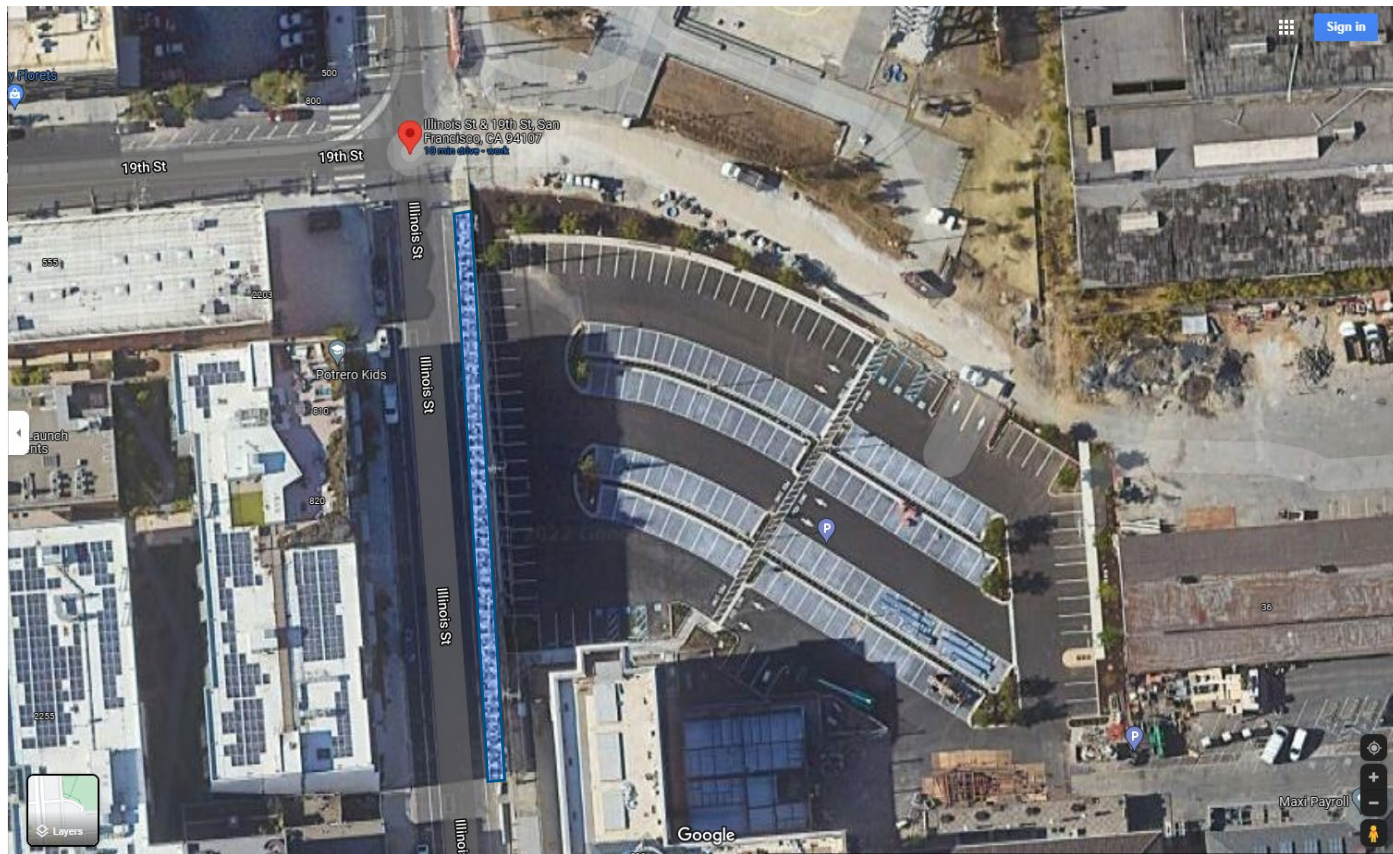
CONSTRUCTION LIMITS

- 1) East side of Illinois Street between **Mariposa and 18th Streets**, approximately 300 Feet.



CONSTRUCTION LIMITS

- 2) East side of Illinois Street between 19th and 20th Streets, approximately 240 Feet.



PROJECT BENEFITS & IMPACTS

Benefits

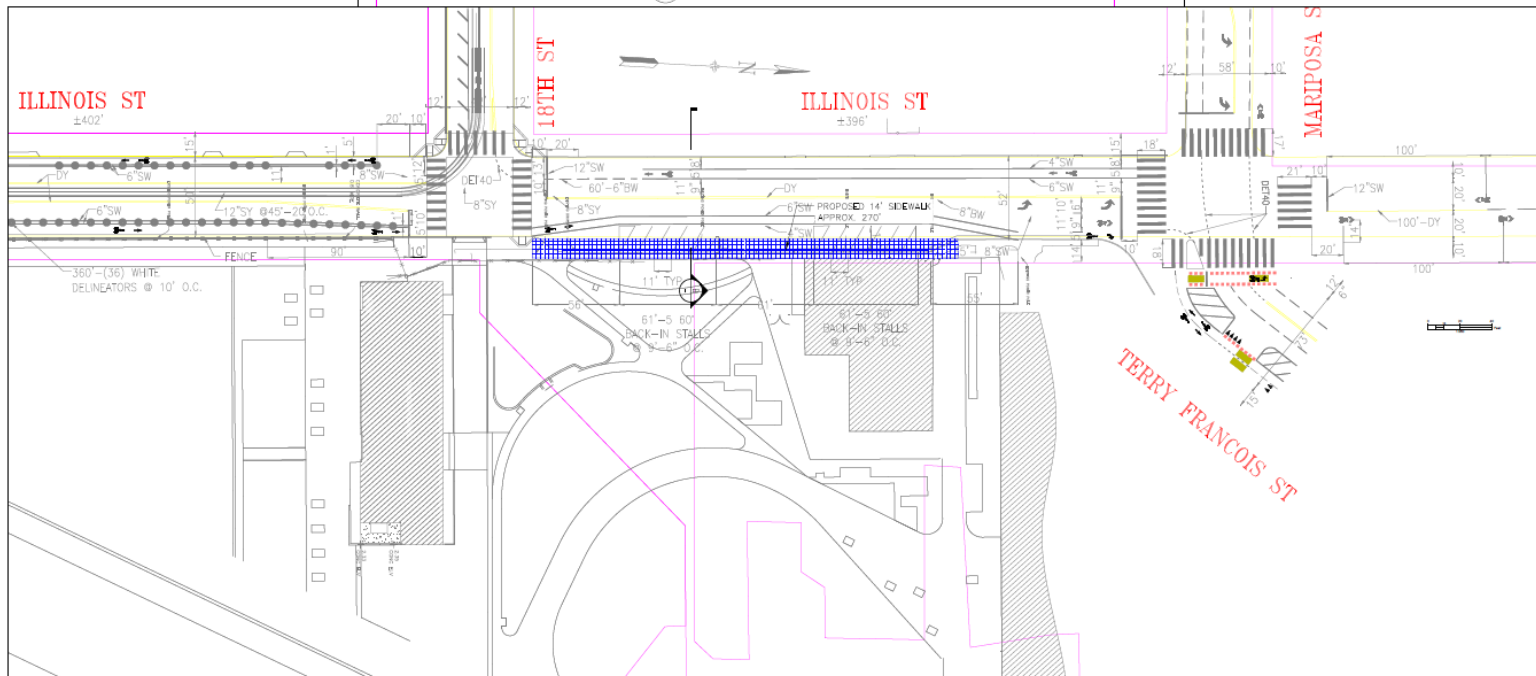
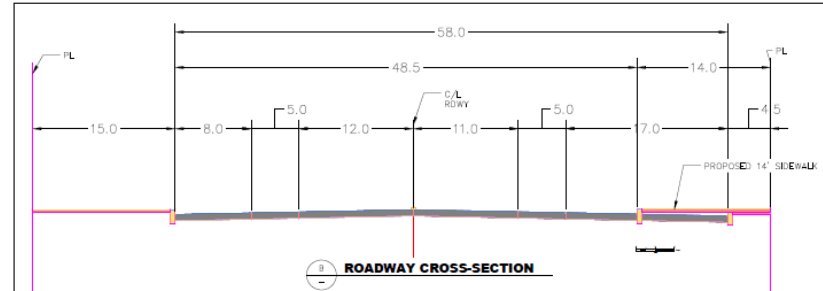
- Promote pedestrian/bicyclist safety and comfort.
- Enhance urban design of Illinois Street.
- Connect the Bay Trail and Blue Greenway.
- Provide Universal Access

Impacts

- Remove 6 parking spaces on the east side of Illinois Street between Mariposa and 18th Streets- Convert angle to perpendicular, where feasible.
- Remove 12 parking spaces on the east side of Illinois Street between 19th and 20th Streets.

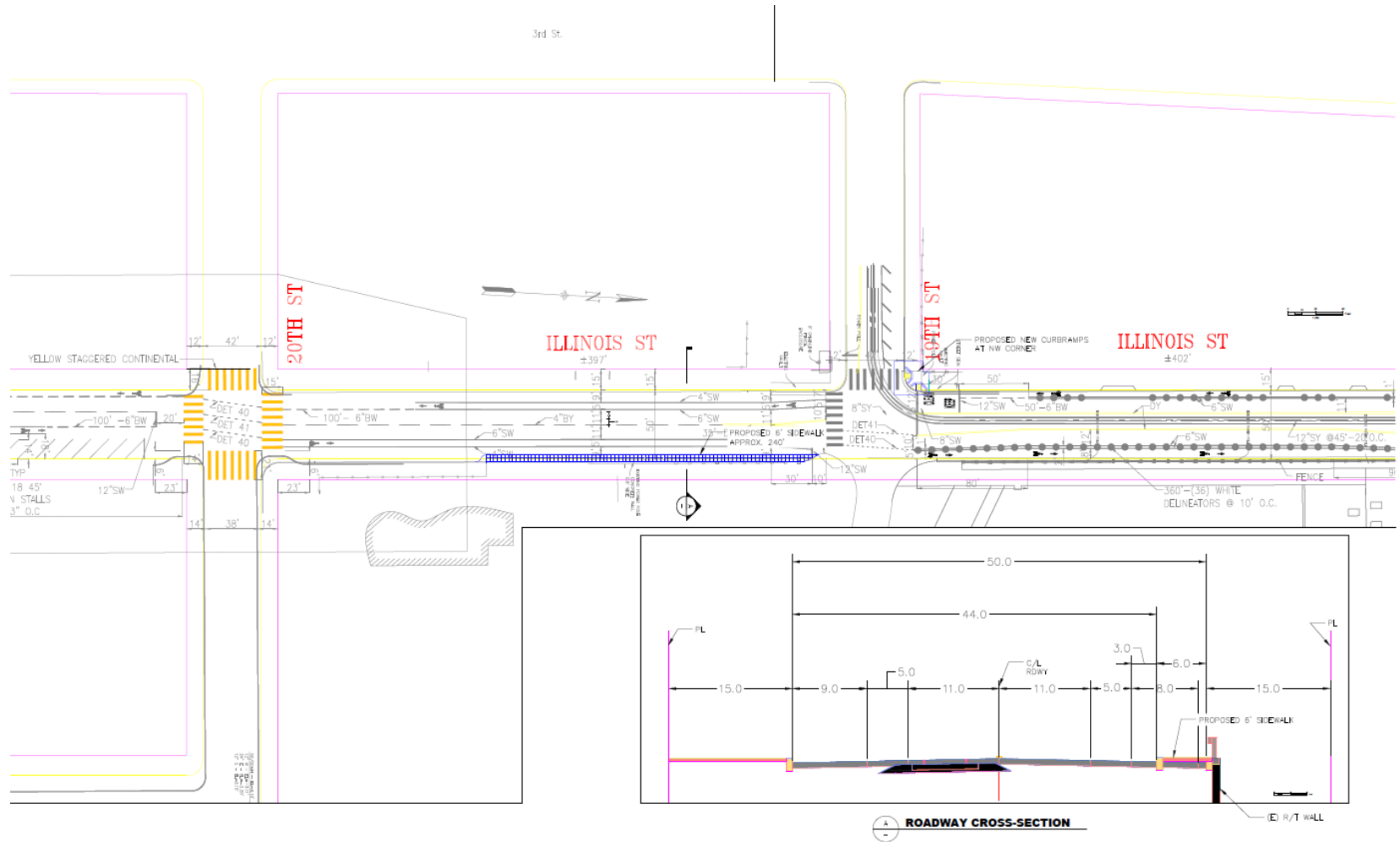
PROPOSED PLANS

1) Illinois Street between Mariposa and 18th Streets.



PROPOSED PLANS

2) Illinois Street between 19th and 20th Streets.



ROADWAY CROSS-SECTION

Proposed Schedule

SF Port Advisory
Committee Meeting
(March 30, 2022)



Sidewalk Legislation
Approval
(4-Weeks)



Detail Design
(4-Weeks)



Permitting
(8-Weeks)



Construction
(8-Weeks)

Substantial Completion
(August 17, 2022)

QUESTIONS & ANSWERS



Any Question ?