



Southern Advisory Committee Recap Discussion
January 26, 2022

Diane Oshima, Special Projects



PIER 80-96 Maritime Eco-Industrial Strategy

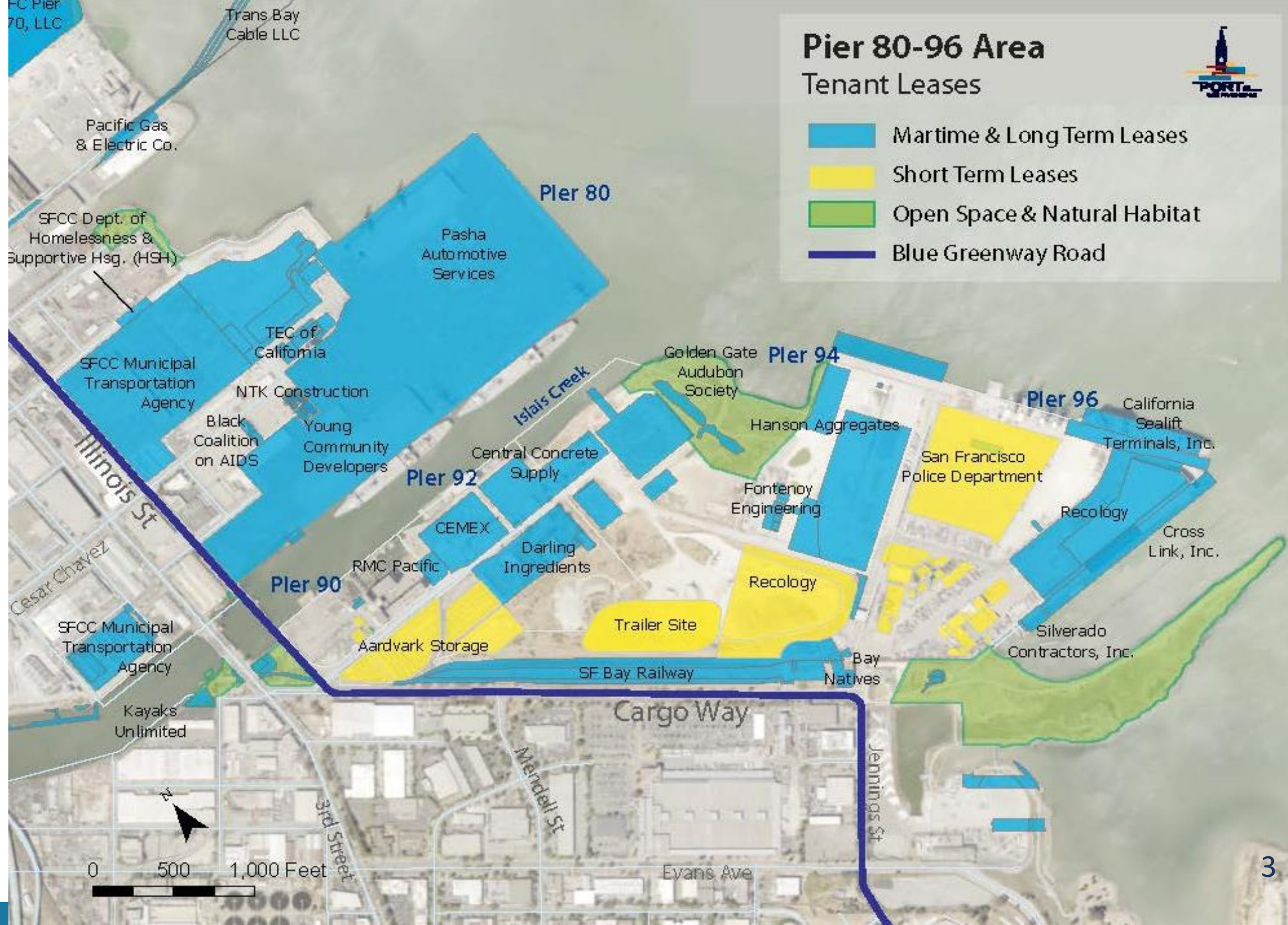
Pier 80-96 Maritime Eco-Industrial Strategy

Developed by the Southern Waterfront Advisory Committee (SWAC)

Preserve and promote maritime and industrial activities that are efficient, responsibly managed, and can create synergies between businesses that:

- Optimize use of resources, recycling, and product exchange
- Strengthen cargo business
- Incorporate green design and green technologies on-site
- Reduce truck traffic on city streets
- Create economic and employment opportunities for local residents
- Are designed for compatibility with Pier 94 wetlands and Heron's Head habitat areas, and Blue Greenway parks and open space

Pier 80 – 96 Site Plan Existing Uses



Pier 80 – 96 Maritime Eco-Industrial Strategy Zones

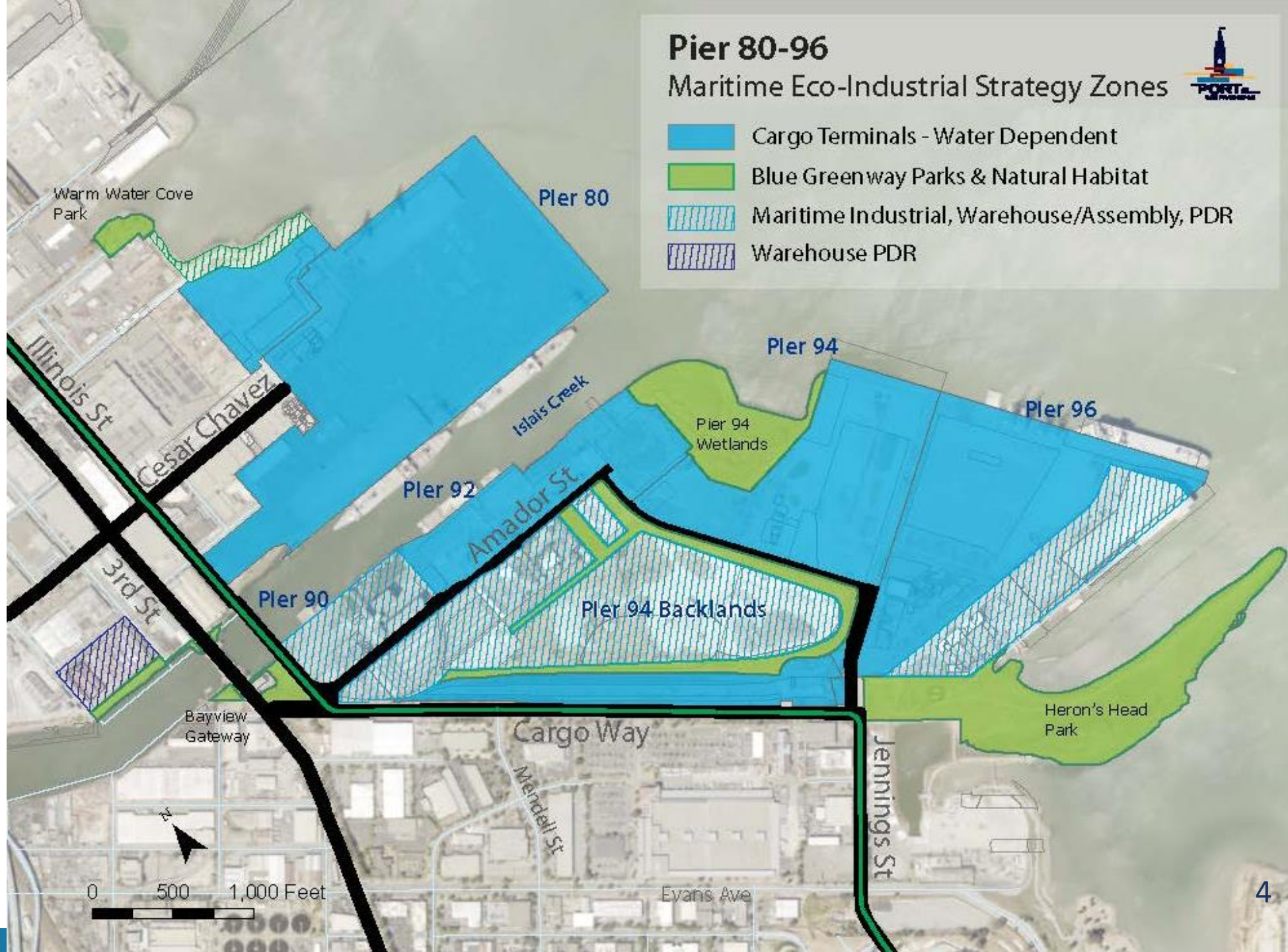




Photo by Noreen Weedon



Blue Greenway & Natural Habitat Areas

- Pier 94 Wetlands & Herons Head Park & Eco Center
- Parks and Water Recreation
- Community & Agency Partnerships

Maintaining an Industrial Base in SF's Economy

- Designated as a Priority Production Area by ABAG
- City's Produce Market, SFMTA & PUC transportation & water infrastructure
- PDR and light manufacturing businesses and jobs



Community Benefits

Site Improvements

- S. Waterfront Beautification Policy
- Property repairs and Shoreline enhancements
- Streetscape, public art, wayfinding and interpretation

Economic Business & Jobs

- Port Racial Equity Plan actions
- Increase racially diverse business and contract opportunities
- Port and tenant job and workforce training

Open Space & Recreation

- Blue Greenway parks, park programming
- Water recreation

Environmental Stewardship & Education

- Nature restoration, biodiversity and enhancements
- Youth environmental education programs (e.g. Greenagers)

Partnerships

- District 6 & 10 community organizations
- City and public agencies
- Environmental and recreation organizations
- Port Tenant sponsorships





Questions & Discussion
Thank You!





Pier 80 Pasha Automotive Services

Ro-Ro, Roll-on Roll-off
Cargo & Automotive
Processing Services

Pier 94 & 92 Dry Bulk

Martin-Marietta
(formerly Hanson
Aggregates)

Pier 94: Dry bulk
aggregate cargoes

Pier 92: Sand
Mining Terminal



Pier 92 – Concrete Batch Plants

- Central Concrete & CEMEX serve Bay Area construction
- Maritime cargo and environmental benefits of co-location
- Receives aggregates from Pier 92 or Pier 94
- Batch plant environmental controls and improvements



Pier 96

Recology
Recycling Center

MARAD Ready
Reserve vessels

Available cargo
terminal growth
area

Interim Uses



ISLAIS CREEK - VISION AND COMMUNITY GOALS

“Islais Creek adapts to flood risks while ensuring healthy and resilient communities”



- A socially & environmentally resilient neighborhood
- Authentic & transparent public engagement during & beyond planning
- A transportation system that is resilient & adaptable to flood risk
- A healthy environment for residents, workers & ecologies
- A sustainable economy that benefits local residents, workers & industries

COMMUNITY FEEDBACK: ISLAIS CREEK "ASSET MAPPING" EXERCISE

What people love about the waterfront



- Candlestick Point
- Neighborhoods
- Parks & Open Space
- Heron's Head
- Water Access
- Families & Communities
- Community Based Organizations
- Bayview Opera House
- Schools

Important assets & facilities



- Housing
- Jobs & Workforce Development
- Commercial Corridors & Local Industry
- Critical Facilities
- Transportation
- Third Street Bridge
- Utilities
- Wastewater/ Sewage

Concerns during a disaster



- Emergency Response
- Transportation
- Hospital Access
- Neighborhood Function
- Water Quality
- Contaminated lands
- Bayview/Hunters Point