

---

## Seawall Update

February 2018



PROTECT THE CITY  
STRENGTHEN  
THE SEAWALL

### Protect the City. Strengthen the Seawall.

Built in 1879, the Embarcadero Seawall is one of San Francisco's oldest pieces of infrastructure. For more than a century the Seawall has served us well, but it is now in need of significant improvements to withstand the next major earthquake and protect us from an increase in flooding from sea level rise.

[Visit our website to learn more!](#)



---

*The Port of San Francisco wants to hear from you!*

The San Francisco Seawall Earthquake Safety and Disaster Prevention Program is a major effort

We want you to be part of this citywide conversation

to significantly improve earthquake safety and performance of the Embarcadero Seawall, provide near-term flood protection improvements, and plan for additional long-term resilience and adaptation of the northern waterfront.

about the Seawall! Please take our [quick survey](#) so that we can best engage you in this exciting and important project.

**Take Our Survey!**



### The Seawall in the news!

With king tides bringing coastal flood warnings to the Bay Area, it's the perfect time to talk about the Embarcadero Seawall. [Learn more from Seawall Earthquake Safety Program Project Manager Steven Reel](#) as he is interviewed by NBC.

### I Love the Waterfront Because...

From Sunday Streets to Winter Wonderland, the Port wants to hear why you love the waterfront. [Follow us on social media](#) and use #SFSeawall to find out where in the community we'll be next!

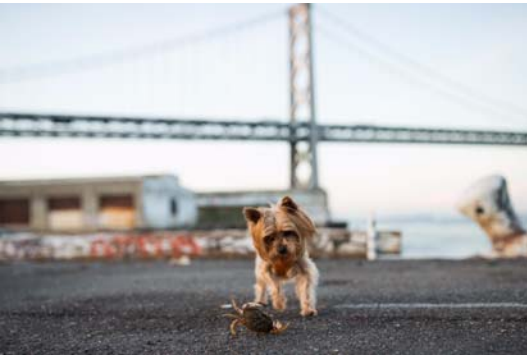


### San Franciscans Support the Seawall Program!


A recent poll shows that San Franciscans support improving the disintegrating Seawall and protecting this vital piece of infrastructure. [Read more!](#)

# Seawall Snaps

We all love taking photos along the beautiful waterfront – so why not share those photos to win a gift card! There is one week left of the #SeawallSnaps Photo Contest. Take a photo along the Embarcadero Seawall and share it with us on Facebook or Instagram.



---

 Forward this newsletter to your friends and colleagues!



---

Copyright © 2018 \*|LIST:COMPANY|\*, All rights reserved.  
\*|LIST:DESCRIPTION|\*

**Our mailing address is:**  
\*|HTML:LIST\_ADDRESS\_HTML|\*

Want to change how you receive these emails?  
You can [update your preferences](#) or [unsubscribe from this list](#).





### Join an Embarcadero Seawall Walking Tour!

Love San Francisco's waterfront? Get to know the Embarcadero Seawall! All the activity along the Embarcadero is made possible by our Seawall. Constructed more than a century, the Seawall has served us well, but it is now in need of significant improvements to withstand the next major earthquake and increasing flood risk from sea level rise and climate change.

Join us for a free 45-minute walking tour! Learn about earthquake and sea level rise risks facing our waterfront and what the Port of San Francisco is doing to keep the waterfront safe for generations to come.

[Join a Seawall Walking Tour](#)



---

[Subscribe](#) to our email list



## We want to hear from you!

The City, acting through the Port of San Francisco, launched Seawall Program to improve earthquake safety and performance of the Embarcadero Seawall, provide near-term flood protection improvements, and plan for long-term resilience and sea level rise adaptation along the northern stretch of the city's waterfront.



Help us look forward! [Join the citywide conversation](#) by taking our quick survey so that we can best engage you in the exciting and important Seawall Program.

Take the Seawall Survey

## THE SEAWALL IS A CRITICAL PART OF THE CITY'S NETWORK OF EMERGENCY RESPONSE

In the event of a major earthquake, the waterfront must be available for emergency response access. Ensuring the seismic reliability of the Seawall will allow the City to respond to a major disaster.



### The Seawall in the news

The Embarcadero Seawall made the front page of the San Francisco Chronicle in April, with news about a proposed \$425 million bond to "kick-start vital repairs." [Read more here.](#)

[Subscribe](#) to our email list



On May 1, Mayor Mark Farrell announced significant investments to strengthen the Embarcadero Seawall.

In case you missed it, check out this ABC7 story - with video - about the Seawall and efforts to fund needed improvements.

---

## Bringing the Embarcadero Seawall to you!

We've had a busy month visiting community and neighborhood groups to talk about the Seawall. Check out where we've been lately. Want us to present for your group?

Email [kirsten.southey@sfpport.com](mailto:kirsten.southey@sfpport.com).

- *Alice B. Toklas LGBT Democratic Club*
- *Bayview Residents Improving Their Environment (BRITE)*
- *Charity Cultural Services Center*
- *Chinatown Disaster Preparedness Committee*
- *Cumberland Presbyterian Chinese Church*
- *Golden Gate University*
- *Hunters Point Shipyard Citizen's Advisory Committee*
- *La Voz Latina*
- *San Francisco Municipal Transportation Agency (SFMTA)*
- *San Francisco Republican Party*
- *Senior & Disability Action Council*
- *Southeast Community Facility Commission*
- *Verterans Equity Center*



[Subscribe](#) to our email list

## See you at Sunday Streets?

Do you know how many people visit the Seawall every year? **More than 24 million!**

We loved sharing information about the Seawall with you at Bayview/Dogpatch, Mission, and Tenderloin Sunday Streets – you were great at Seawall trivia! Catch the Seawall team at farmers markets and street fairs around town including the upcoming Sunset, Western Addition, Mission, Tenderloin, and Excelsior Sunday Streets!



Port of San Francisco  
Pier 1, The Embarcadero  
San Francisco, CA 94111

Share this email:



[Manage](#) your preferences | [Opt out](#) using TrueRemove®

Got this as a forward? [Sign up](#) to receive our future emails.

View this email [online](#).

Port of San Francisco Pier 1, The Embarcadero  
San Francisco, CA | 94111 US

This email was sent to .

*To continue receiving our emails, add us to your address book.*

---

[Subscribe](#) to our email list





### You're invited to the first Seawall Community Meeting!

Join us at the first in a series of Seawall Community Meetings to learn more about the Embarcadero Seawall and provide input to strengthen our waterfront and envision a more resilient and sustainable San Francisco. We will provide an update on the Seawall Program and then dive deeper into subjects including sea level rise, seismic safety, funding, and waterfront land use. The meeting will include a kid-friendly Seawall table as well as refreshments.

**Event Details**  
Thursday, June 21  
6:30 PM – 8:30 PM (presentation at 7 PM)  
Port Commission Meeting Room in the Ferry Building

[RSVP for the Seawall Community Meeting](#)



### The Seawall in the news

The future won't wait. Neither can we. Thank you to Supervisor Aaron Peskin, Assessor Carmen Chu, and City Administrator Naomi Kelly for advocating that we do everything in our power to ensure we have a safe Embarcadero Seawall now and for future generations.



#####  
#####Embarcadero#####

## THE SEAWALL CREATED 500+ ACRES OF NEW LAND

All buildings, infrastructure, and activity along the northern waterfront — extending back to 1st Street — are made possible by the Embarcadero Seawall.



### The Seawall keeps us moving!

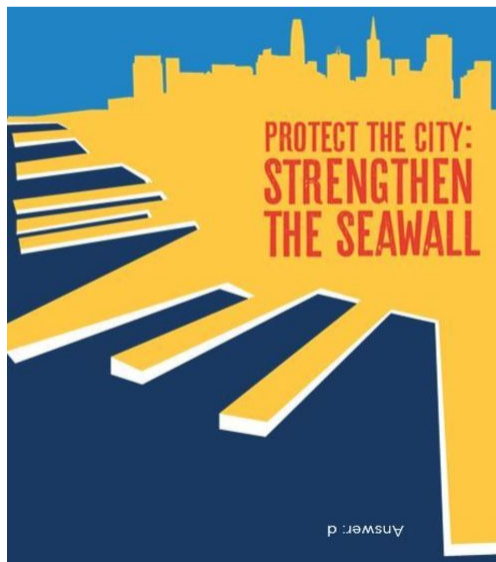
Thank you to Bay Area Rapid Transit (BART), the San Francisco Municipal Transportation Agency (SFMTA), the San Francisco Bay Area Water Emergency Transportation Authority (WETA), and Golden Gate Ferry for joining a conversation on the Embarcadero Seawall's vital role in regional transportation.

[Re-live the conversation](#) and learn more about how the Seawall is the backbone for our transportation network.

### Think you're a Seawall expert? Test yourself!

What is the Embarcadero Seawall made of?

- a. Concrete
- b. Abandoned ships
- c. Old piers
- d. All the above



Port of San Francisco  
Pier 1, The Embarcadero  
San Francisco, CA 94111

Share this email:



[Manage](#) your preferences | [Opt out](#) using TrueRemove@  
Got this as a forward? [Sign up](#) to receive our future emails.  
View this email [online](#).

Port of San Francisco Pier 1, The Embarcadero  
San Francisco, CA | 94111 US

This email was sent to .  
To continue receiving our emails, add us to your address book.





### "Meet the Engineer" Happy Hour at Black Hammer Brewing

Sea level rise? Earthquakes? Good beer? Enjoy a pour with the Seawall Program's lead engineer and learn more about the effort to strengthen the Embarcadero Seawall! Black Hammer Brewing is hosting a happy hour next Tuesday, July 17 - [RSVP here!](#) The Port is excited to partner with San Francisco's Black Hammer Brewing for a Seawall-themed beer called "Seawall's Sea Puppy." The Puppy is a Gose with a lemon sourness and a strong saltiness. Stop by Black Hammer to taste the Seawall - cheers!

#### Event Details

Tuesday, July 17

5:30 PM – 7 PM

Black Hammer Brewing at 544 Bryant Street

### Thank you for joining us at the first Seawall Community Meeting

Thank you for making our first Seawall Community Meeting a success! We loved connecting with you about the Seawall Program, sea level rise, earthquakes, equitable funding, and much more. Your questions and feedback are invaluable as we work together to strengthen the waterfront. We hope to see you at our next meeting in September. Couldn't attend but want to learn more? [View the Community Meeting presentation!](#)



### Presenting Phantom Coast

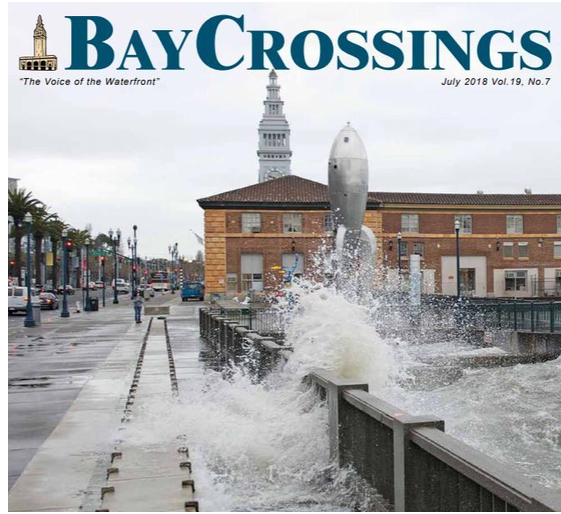
Join the Port and Port tenant, Surface Design, as we celebrate the work of Harvard Graduate School of Design students' exploration of the Seawall. Learn more about the projects and enjoy refreshments at Pier 1 - [RSVP here!](#)

#### Event Details

Wednesday, July 25

5 PM – 7 PM

Port of SF, Pier 1, The Embarcadero



### The Seawall in the news

Check out the [July issue of Bay Crossings](#) for an in-depth look at the Embarcadero Seawall.

Read about how San Francisco Supervisors [unanimously approved a \\$425 million bond measure](#) to fund the Seawall Program for the November ballot and how the City of San Francisco will [receive federal funding to support the Embarcadero Seawall Program](#).

## THE SEAWALL WAS CONSTRUCTED MORE THAN A CENTURY AGO

and is the foundation of **over three miles** of San Francisco's waterfront.



### The King Tides are here!

King Tides flood the Embarcadero! The Embarcadero Seawall was built over 100 years ago and was not made to accommodate sea level rise. To get a better sense of future sea level rise, visit Pier 14 and see our sea level rise markers.

[Watch our time-lapse video from January's King Tides.](#)

### Think you're a Seawall expert? Test yourself!

How many people visit the waterfront each year?

- a. 20,000+
- b. 500,000+
- c. 24+ million
- d. 1+ billion



Port of San Francisco  
Pier 1, The Embarcadero  
San Francisco, CA 94111

Share this email:

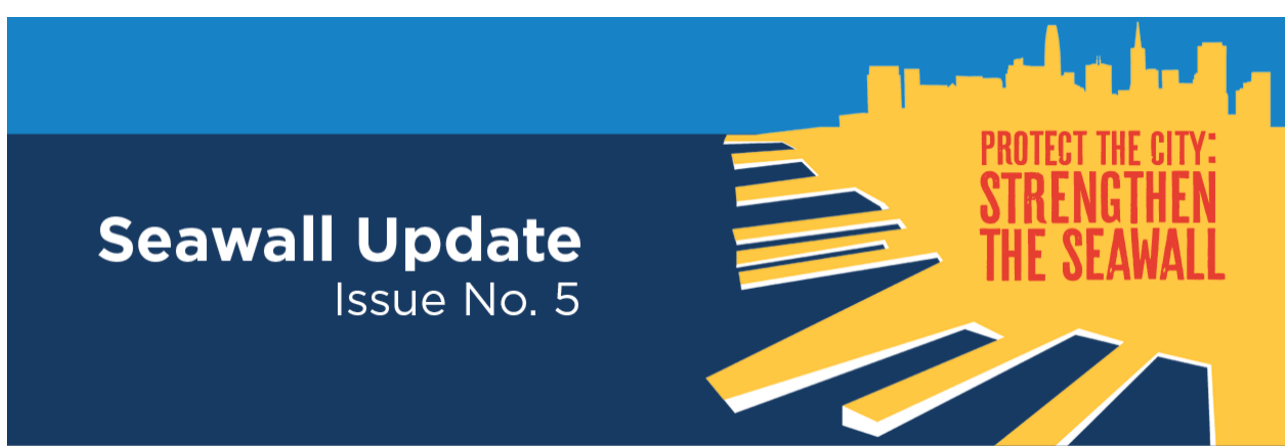


[Manage](#) your preferences | [Opt out](#) using TrueRemove®  
Got this as a forward? [Sign up](#) to receive our future emails.  
View this email [online](#).

Port of San Francisco Pier 1, The Embarcadero  
San Francisco, CA | 94111 US

This email was sent to .  
To continue receiving our emails, add us to your address book.





### Permanently Temporary: Living with Rising Seas

With King Tides already flooding the Embarcadero roadway, the reality of permanent change along our shoreline is starting to resonate. Join Port Executive Director Elaine Forbes for a panel discussion this Wednesday evening hosted by Climate One at the Commonwealth Club. Learn more about the Seawall Program and the Port's effort to strengthen the Seawall to protect our city.

#### Event Details

Wednesday, August 8  
6:30 PM program and 7:30 reception  
The Commonwealth Club at 110 The Embarcadero

### Thank you for joining us at the Phantom Coast reception!

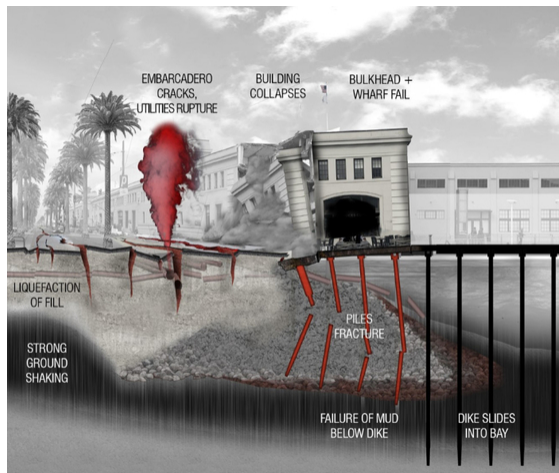
An intertidal garden? An oyster marsh? Thank you to everyone who joined us for the Surface Design Phantom Coast event last week to see the creative and imaginative ideas from the Harvard Design School students. Projects will be on display at Pier 1 through September. Please stop by anytime Monday-Friday between 9 AM and 5 PM to check them out!



### The Seawall and the "Big One"

The Embarcadero Seawall was built over a century ago – far before modern seismic safety standards. Join Seawall Program Project Manager Steven Reel and SPUR to learn how the Port is preparing for the inevitable.

Event Details  
Thursday, August 16  
12:30 PM  
SPUR at 654 Mission Street



### We love the waterfront!

Thank you to Supervisor Stefani for helping us educate San Franciscans about the importance of the Seawall at the Cobb Elementary Shared School Yard Public Safety Fair.

Find the Port at events all over town this month including [SoMa Sunday Streets](#), [Outdoor Movie Night at Duboce Park](#), and [Summer Stride 2018](#).

## THE SEAWALL IS KEY TO REGIONAL TRANSPORTATION



# 440,000

people arrive daily by boat at the Ferry Building or through the Transbay Tube on BART

Every day, **over a million people** use transit routes that terminate downtown or along the waterfront.

### Bringing the Seawall to you!

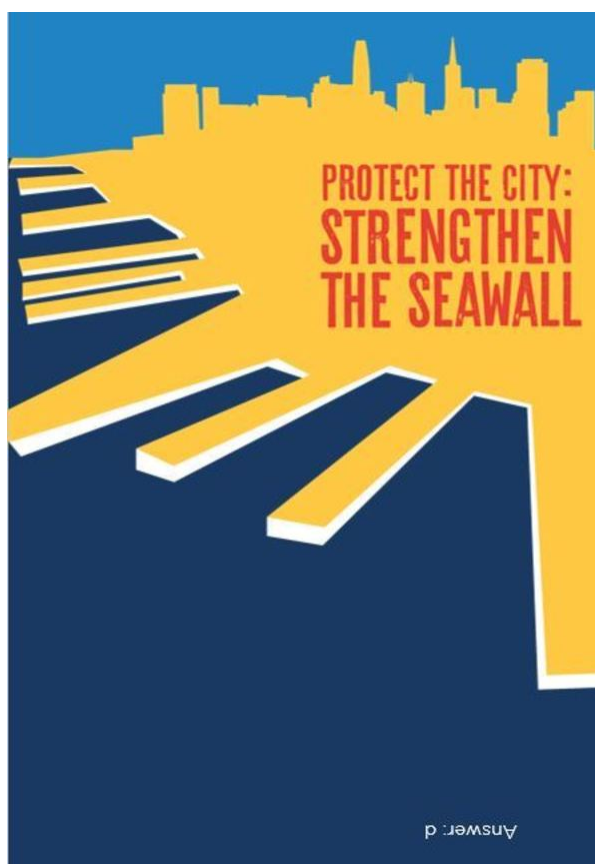
The Eureka Valley Neighborhood Association (EVNA) hosted Port Executive Director – and Castro neighborhood resident – Elaine Forbes at their recent disaster-themed community meeting. To learn more, [read Elaine's article on page 14 of the EVNA newsletter](#). Want us to present for your group? Email [kirsten.southey@sfport.com](mailto:kirsten.southey@sfport.com).



### Think you're a Seawall expert? Test yourself!

How likely is it that a major earthquake will happen in the Bay Area in the next 25 years?

- a. 2% chance
- b. 20% chance
- c. 46% chance
- d. 72% chance



Port of San Francisco  
Pier 1, The Embarcadero  
San Francisco, CA 94111

Share this email:



[Manage](#) your preferences | [Opt out](#) using TrueRemove®  
Got this as a forward? [Sign up](#) to receive our future emails.  
View this email [online](#).

Port of San Francisco Pier 1, The Embarcadero  
San Francisco, CA | 94111 US

This email was sent to .  
*To continue receiving our emails, add us to your address book.*





### You're invited to the second Seawall Community Meeting!

Join the Port of San Francisco at the second in a series of Seawall Community Meetings to learn more about the Embarcadero Seawall, explore seismic and flooding scenarios, and participate in an interactive mapping exercise. The event will be held in the Exploratorium's beautiful Fisher Bay Observatory Gallery. Refreshments served!

#### Event Details

Wednesday, September 26  
5:30 PM – 7 PM

The Exploratorium's Fisher Bay Observatory Gallery, Pier 15,  
Embarcadero and Green Streets

[RSVP for the Seawall Community Meeting](#)

### Port Executive Director Elaine Forbes shares why strengthening the Embarcadero Seawall is so important



#### Ritual Coffee's Seawall Stroll

We're excited to announce our partnership with [Ritual Coffee](#)! Ritual is supporting Seawall education through the creation of a specialty espresso blend, the Seawall Stroll! This partnership underscores how critical the Seawall is to protecting local businesses and supporting our economy. Try the delicious blend anywhere Ritual is sold.

Hear more from Ritual's [Eileen Rinaldi](#) on this exciting partnership and [read all about it!](#)



#### The Seawall in the news

[Read about the Port's innovative outreach efforts and Seawall-themed coffee and beer!](#) □□□□□□□□.

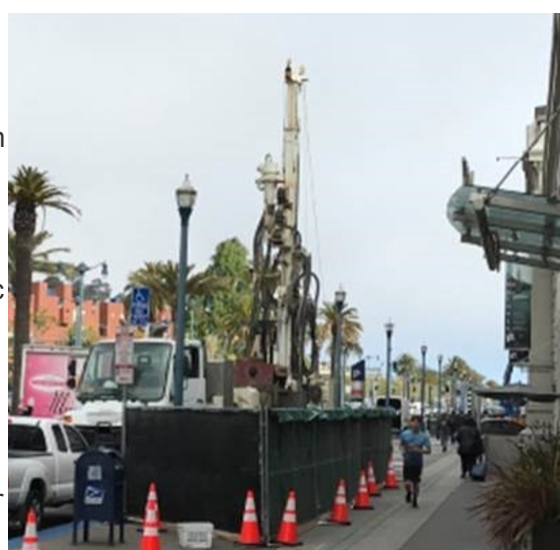
[What's labor got to do with it?](#) Vice President of the Port Commission and Secretary-Treasurer Willie Adams and Executive Director of the San Francisco Labor Council Rudy Gonzalez share how the Seawall supports workers and jobs.

Hear from Port Executive Director Elaine Forbes! [Elaine joined Hecho en California for a conversation about the Seawall.](#) She was also part of a [sea level rise panel at the Commonwealth Club's Climate One event.](#)

#### Seawall geotech exploration

Notice some new activity along the waterfront? The Seawall engineering team will be collecting soil samples through the end of the year to investigate the conditions underlying the Embarcadero. This will help us better understand seismic vulnerabilities and advance solutions for strengthening the Seawall. [Learn more about the geotech exploration here.](#)

Geotech exploration should be minimally disruptive and only last through December 2018. That said, thanks for your patience!



#### Teens, pups, and Sunday Streets - citywide Seawall education!

From Teen Night at the California Academy of Sciences to SoMa Sunday Streets to Sundown Cinema, we've loved connecting with you all about our waterfront!

Over the past year, the Seawall outreach team has attended 50+ events, connected with 13,000+ people, and handed out lots and lots of Seawall swag! Join us this month at the Richmond District Autumn Moon Festival, Western Addition Sunday Streets, Sunset Community Festival, and Tenderloin Sunday Streets.

Want to see us at your event? Email [kirsten.southey@sfport.com](mailto:kirsten.southey@sfport.com).



**OVER \$102B OF TOTAL ECONOMIC ACTIVITY AND OVER \$24B OF PROPERTY VALUE IS AT RISK FROM FAILURE OF THE SEAWALL**

The value of assets at risk is **10-40x greater** than the investment needed to strengthen the Seawall.

Port of San Francisco  
Pier 1, The Embarcadero  
San Francisco, CA 94111

Share this email:



[Manage](#) your preferences | [Opt out](#) using TrueRemove®  
Got this as a forward? [Sign up](#) to receive our future emails.

View this email [online](#).

Port of San Francisco Pier 1, The Embarcadero  
San Francisco, CA | 94111 US

This email was sent to .

To continue receiving our emails, add us to your address book.





### The San Francisco Waterfront and the "Big One"

"Twenty-nine years ago this week, the San Andreas Fault sent a shock that reverberated throughout the Bay Area. This shock was responsible for 63 deaths, over 3,700 injuries, and \$6 billion in damages. Perhaps the most jarring numbers from the 1989 tremor were the ones revealing that it was *not* a major earthquake. With a magnitude of 6.9 and an epicenter 60 miles away from San Francisco, the Loma Prieta earthquake was not the "Big One." This anniversary of Loma Prieta serves as an important reminder: we know the "Big One" is coming and we must prepare."

[Read the full op-ed from Mary Ellen Carroll, Executive Director of the Department of Emergency Management and Naomi Kelly, San Francisco's City Administer.](#)

### What's at stake? This earthquake simulation video shows how vulnerable our Seawall is to earthquake and flood risks.



### Thank you for joining us at the second Seawall Community Meeting!

Thank you for making our second Seawall Community Meeting a success and packing the house at the Exploratorium! We loved mapping our city's important assets along the waterfront and exploring the flood and seismic scenarios with everyone. Your insights and feedback are invaluable as we work together to strengthen the waterfront. We hope to see you at our next meeting in January.

Couldn't attend but want to learn more? [View the Community Meeting presentations](#) and the ["Game of Hazards" map showing waterfront assets and flood and seismic scenarios.](#)



### Take a deeper dive into the Seawall Program

Interested in more information about the Seawall Program, sea level rise, and earthquakes? We've got you covered! The Seawall team created a Seawall Program brochure and a series of inserts that answer questions about earthquakes, sea level rise, and more:

- [Overall Seawall Program Brochure](#)
- [The Seawall and Sea Level Rise Insert](#)
- [The Seawall and Earthquakes Insert](#)
- [Seawall Program Framework Insert](#)
- [The Port and Sea Level Rise Insert](#)

Have more questions? [Contact us!](#)

### The Seawall in the news

[Hear from Mayor Breed](#) as she discusses the City's plan to combat sea level rise.

[Visit our website](#) for more Seawall in the news!



### Take a ride on the Seawall!

The Seawall team has hosted ten Seawall Walking Tours and now one Seawall Bike Tour! Thank you to the San Francisco Bicycle Coalition and all the riders who joined us to learn more about the Seawall.

The Seawall stretches three miles from Fisherman's Wharf to just south of AT&T Ballpark - the perfect length for a bike ride! It's a key bicycle route and counts show that between 700 to almost 900 riders use the Embarcadero daily for their evening commutes!

### Bringing the Seawall to you!

We're joining the Neighborfest team for three neighborhood resiliency events. Thank you Resilient Bayview, Quesada Neighborfest, and Cayuga Clubhouse Neighborfest for hosting the Seawall table and helping us prepare for the next "Big One."

Want to see us at your event? Email [kirsten.southey@sfport.com](mailto:kirsten.southey@sfport.com)



## THE SEAWALL FACES URGENT SEISMIC RISKS

In the Bay Area there is a 72% chance of a 6.7 or greater magnitude earthquake striking in the next 25 years.

Port of San Francisco  
Pier 1, The Embarcadero  
San Francisco, CA 94111

Share this email:



[Manage](#) your preferences | [Opt out](#) using TrueRemove®  
Got this as a forward? [Sign up](#) to receive our future emails.  
View this email [online](#).

Port of San Francisco Pier 1, The Embarcadero  
San Francisco, CA | 94111 US

This email was sent to .  
[To continue receiving our emails, add us to your address book.](#)





### Thank you, San Francisco!

I am happy to announce that the \$425 million General Obligation bond to address urgent life safety improvements to the San Francisco waterfront and Embarcadero Seawall passed with over 80% of the vote. We are incredibly grateful to voters for overwhelmingly approving these funds.

The success of the bond ensures funding for Phase I of the Seawall Program and is an important down payment to repair one of the most critical pieces of infrastructure in our city. We will now work to leverage this local funding opportunity with state and federal dollars to ensure San Francisco has a safe waterfront. The Seawall Program will continue to meet the strict standards of accountability, fiscal responsibility, and transparency San Francisco voters expect and deserve.

Although this is a huge milestone, our work is just beginning. We must get to work on the most urgent life safety projects along the Embarcadero Seawall and envision the entire 7.5 miles of waterfront for future generations.

– Elaine Forbes, Executive Director of the Port of San Francisco

### Youth Commissioner Arianna Nassiri shares why protecting the waterfront is vital for San Francisco's youth

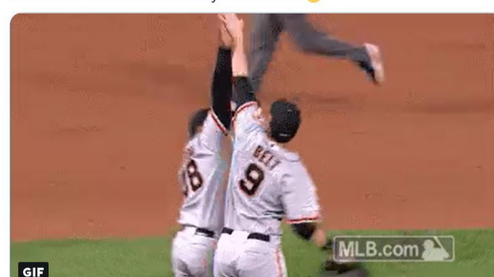


### The San Francisco Giants need the Seawall too!

Your favorite spots along the waterfront all have something in common: they rely on the Embarcadero Seawall!

Thanks to AT&T Park, the Exploratorium, and Fisherman's Wharf for [sharing why the Seawall is so important](#). Join the conversation using #SFSeawall!

Port of SF @SFPort · Nov 1  
Replying to @TheWharfSF @exploratorium and @ATTPark  
And thank you @TheWharfSF, @ATTPark & @exploratorium for your support to protect the City and strengthen the #SFSeawall! We love our Port tenants and the waterfront! See you out there! 🙌



### A "Royal Walk" on the Seawall!

Join the Exploratorium and the Port for a walk along the waterfront to see the King Tides. These are the highest tides of the year and they give us a glimpse into our waterfront's future. Learn what causes them and how the Port is planning for sea level rise. Register below:

- [December King Tide Walk on Saturday, December 22 at 10 AM](#)
- [January King Tide Walk on Monday, January 21 at 10:30 AM](#)

### The Seawall in the news

Local funding for the Seawall was in the news, as San Francisco voters passed Proposition A to address urgent life safety improvements to the Embarcadero Seawall. Learn more from Mayor Breed's [press release](#) and articles from [the Chronicle](#) and [KQED](#).

Read about the Seawall in [Mission Local](#) and the [Marin Independent Journal](#).



**THE SEAWALL EARTHQUAKE SAFETY PROGRAM WILL CREATE AN ESTIMATED 30,000 NEW JOBS**

**3,000** jobs estimated to be created during the first phase of the project, which is focused on immediate seismic upgrades.

**30,000** jobs estimated to be created during the full infrastructure improvement phase.

Port of San Francisco  
Pier 1, The Embarcadero  
San Francisco, CA 94111

Share this email:



[Manage](#) your preferences | [Opt out](#) using TrueRemove®  
Got this as a forward? [Sign up](#) to receive our future emails.  
View this email [online](#).

Port of San Francisco Pier 1, The Embarcadero  
San Francisco, CA | 94111 US

This email was sent to .  
To continue receiving our emails, add us to your address book.





### A hearty Seawall thank you!

I want to thank you all for your involvement in the Seawall Program this year. In 2018 alone, we participated in 65+ neighborhood outreach events, 60+ neighborhood community group meetings, reached an estimated half a million radio listeners, held two community meetings, hosted ten Seawall walking tours and one bike tour, received over 300,000 impressions on social media, partnered with local businesses to create two specialty Seawall beverages, and much, much more!

Thank you for helping to strengthen our Seawall and protect our city over this past year. We look forward to connecting with you again in 2019!

– Elaine Forbes, Executive Director of the Port of San Francisco



### Elmy Bermejo, President of the Commission of the Environment, talks about the Embarcadero Seawall's importance to the entire city



### Seawall Community Meeting #3

We loved hearing from you at the first two Seawall Community Meetings and look forward to seeing you at #3! Join the Port to learn more about the Embarcadero Seawall and the City's approach to sea level rise and seismic risks in the short, near, and long-term.

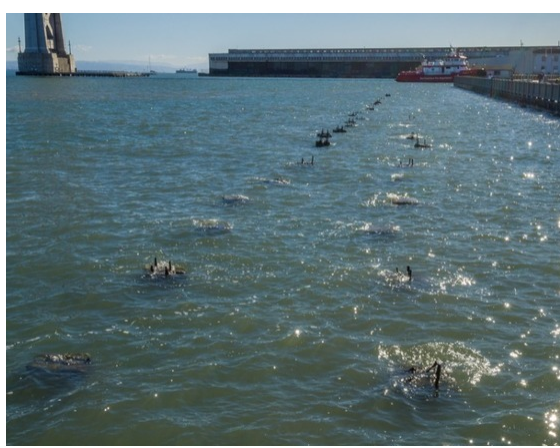
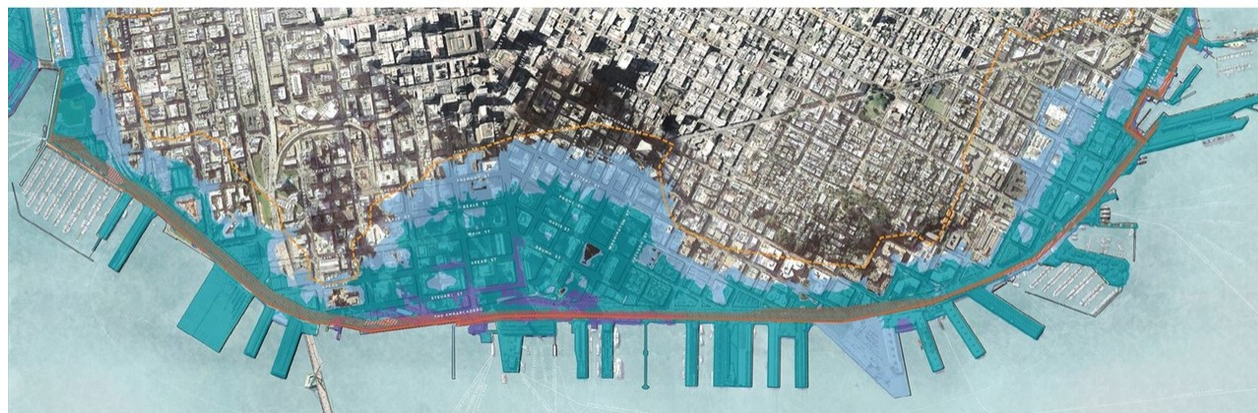
#### Event Details

Thursday, January 31 at 5:30 PM  
SPUR at 635 Mission Street



### The Seawall team in the field!

Over the past year, the Seawall team has been hard at work understanding the existing conditions and analyzing earthquake and flood vulnerabilities. This means we're working to better understand what's there now and what's most at risk. Activities include collecting soil samples to understand the subsurface conditions and using lasers to survey the structures in the vicinity of the Seawall. This effort now, ensures that we are laying the foundation for successful projects to strengthen the Seawall and adapt to sea level rise.



### A "Royal Walk" on the Seawall

Join the Exploratorium and the Port for a walk along the waterfront to see the King Tides. These tides provide a glimpse into our waterfront's future. Learn what causes them and how the Port is planning for sea level rise.

Register now for the [December](#) or [January](#) walks.

### From the archives: the evolution of San Francisco's waterfront

As we imagine the waterfront of the future, it's helpful to remember how far we've come! Before the Gold Rush, San Francisco was a sleepy harbor with an eastern shoreline near today's Salesforce Tower. How times have changed! Over 100 years ago, the Port oversaw the construction of the Embarcadero Seawall (right). The Seawall transformed the city's tidal mudflats (left) and laid the foundation for the thriving waterfront we know and love today.



**THE SEAWALL SUPPORTS AND PROTECTS IMPORTANT UTILITY INFRASTRUCTURE**

This includes major wastewater, water, auxiliary water system, and power utilities.

Port of San Francisco  
Pier 1, The Embarcadero  
San Francisco, CA 94111

Share this email:



[Manage](#) your preferences | [Opt out](#) using TrueRemove®  
Got this as a forward? [Sign up](#) to receive our future emails.  
View this email [online](#).

Port of San Francisco Pier 1, The Embarcadero  
San Francisco, CA | 94111 US

This email was sent to .  
To continue receiving our emails, add us to your address book.