



Southern Advisory Committee Presentation
October 27, 2021

Diane Oshima, Special Projects



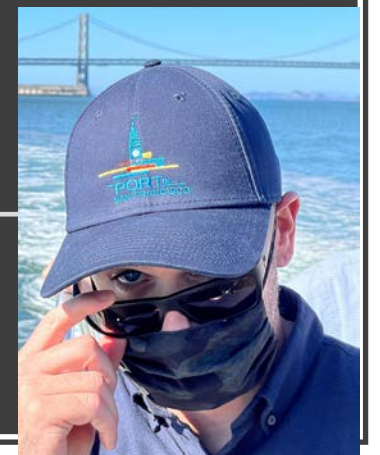
PIER 80-96 Maritime Eco-Industrial Strategy



Photo by Howard Wong

SAC Boat Tour

Perspectives on maritime operations and shoreline uses viewed from the Bay



Presentation Topics

1. Southern Waterfront context
2. Pier 80-96 Maritime Eco-industrial Strategy
3. Port cargo, uses and developments
4. Integrating the Blue Greenway, nature and community
5. Preserving maritime and industrial space in SF
6. Community benefits





A compact urban waterfront

Carefully managed, serving diverse uses

Evolves to meet City, economic & environmental change



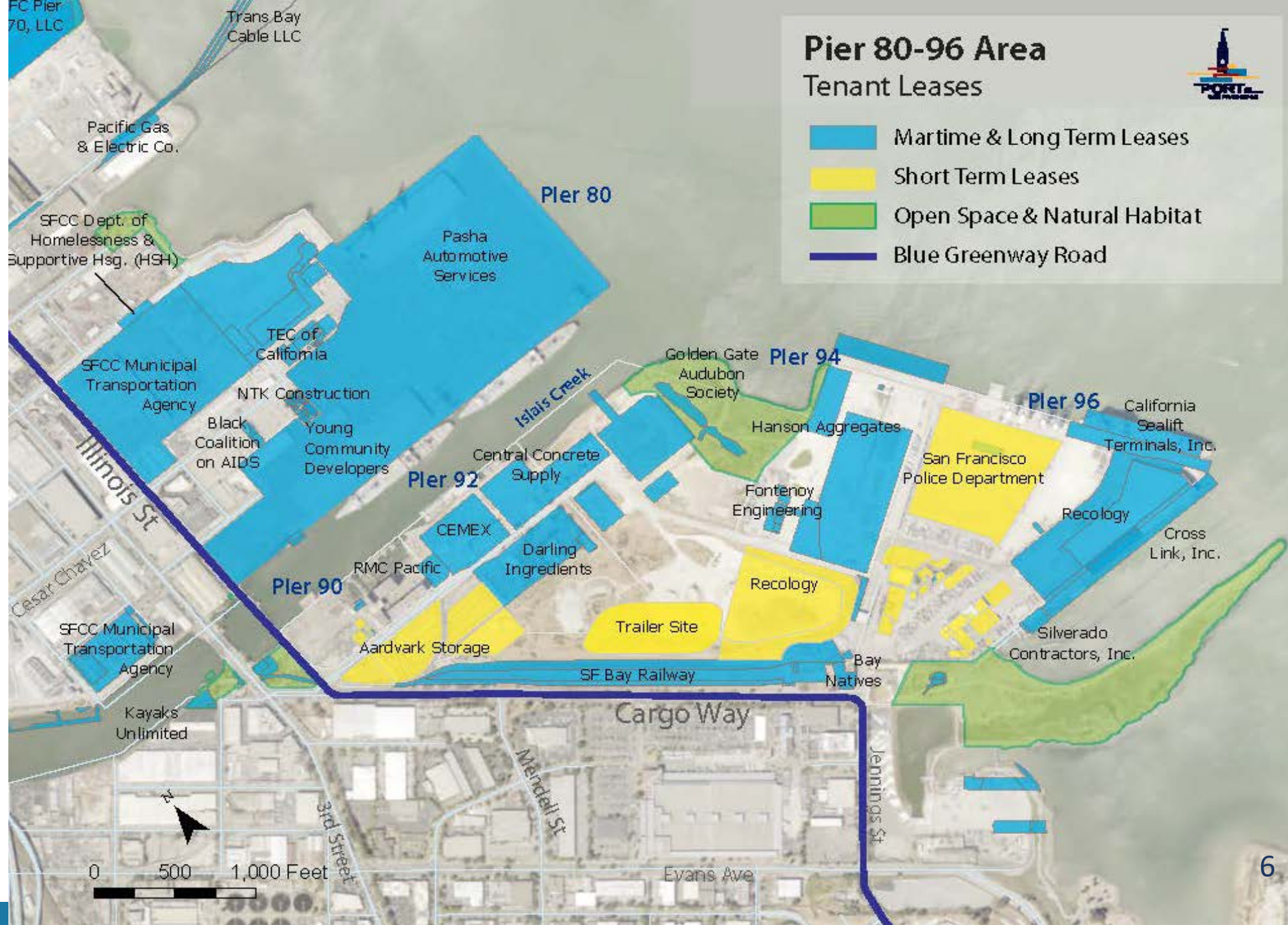
Pier 80-96 Maritime Eco-Industrial Strategy

Developed by the Southern Waterfront Advisory Committee (SWAC)

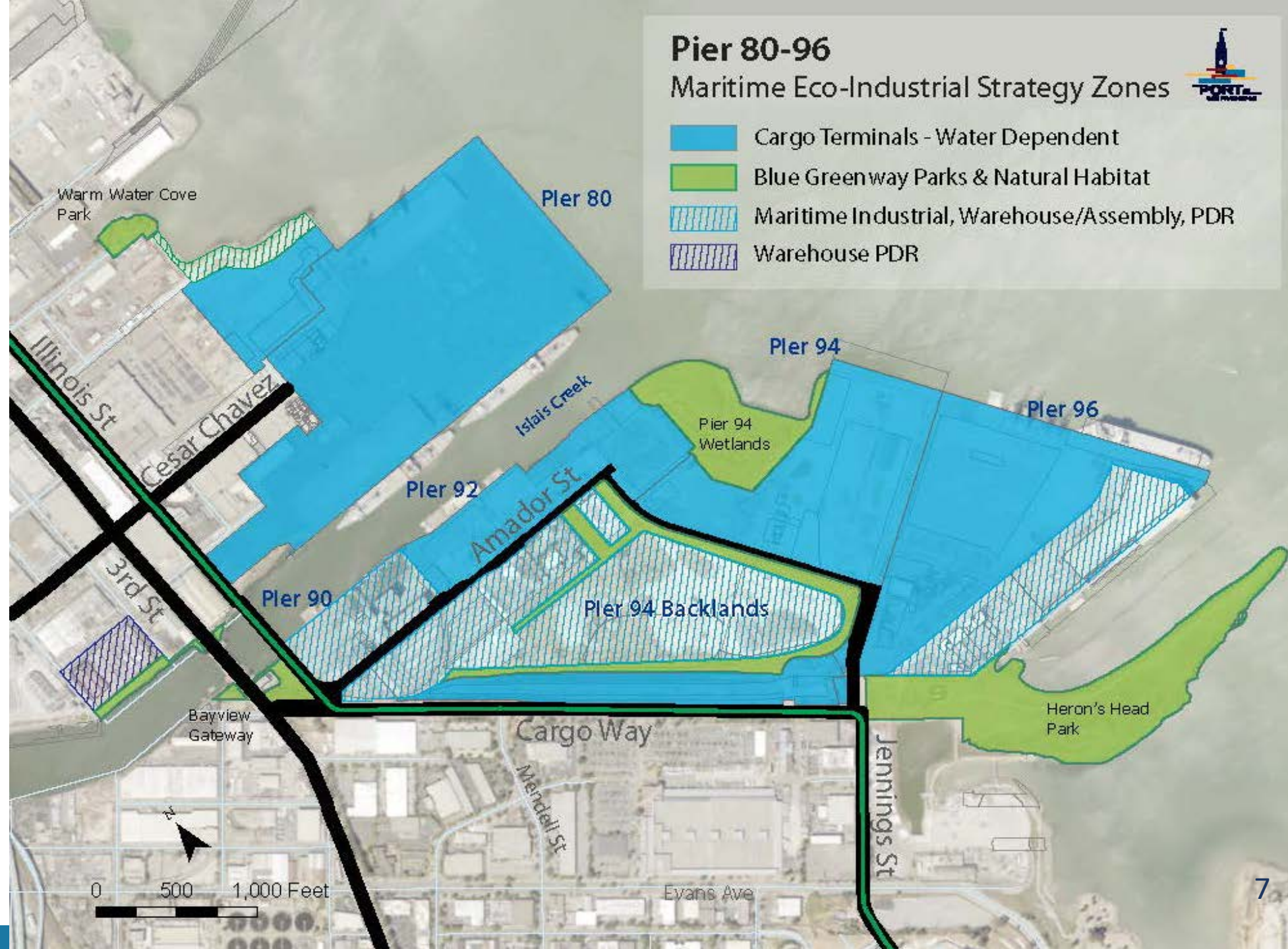
Preserve and promote maritime and industrial activities that are efficient, responsibly managed, and can create synergies between businesses that:

- Optimize use of resources, recycling, and product exchange
- Strengthen cargo business
- Incorporate green design and green technologies on-site
- Reduce truck traffic on city streets
- Create economic and employment opportunities for local residents
- Are designed for compatibility with Pier 94 wetlands and Heron's Head habitat areas, and Blue Greenway parks and open space

Pier 80 – 96 Site Plan Existing Uses



Pier 80 – 96 Maritime Eco-Industrial Strategy Zones





Pier 80 Pasha Automotive Services

Ro-Ro, Roll-on Roll-off
Cargo & Automotive
Processing Services

Pier 94 & 92 Dry Bulk

Martin-Marietta
(formerly Hanson
Aggregates)

Pier 94: Dry bulk
aggregate cargoes

Pier 92: Sand
Mining Terminal





Pier 92 – Concrete Batch Plants

- Central Concrete & CEMEX serve Bay Area construction
- Maritime cargo and environmental benefits of co-location
- Receives aggregates from Pier 92 or Pier 94
- Batch plant environmental controls and improvements





Pier 96

Recology
Recycling Center

MARAD Ready
Reserve vessels

Available cargo
terminal growth
area

Interim Uses



Pier 94 Backlands

35 acre area

2019 grading and site improvements (17 ac)

Warehouse development opportunity

Interim Uses

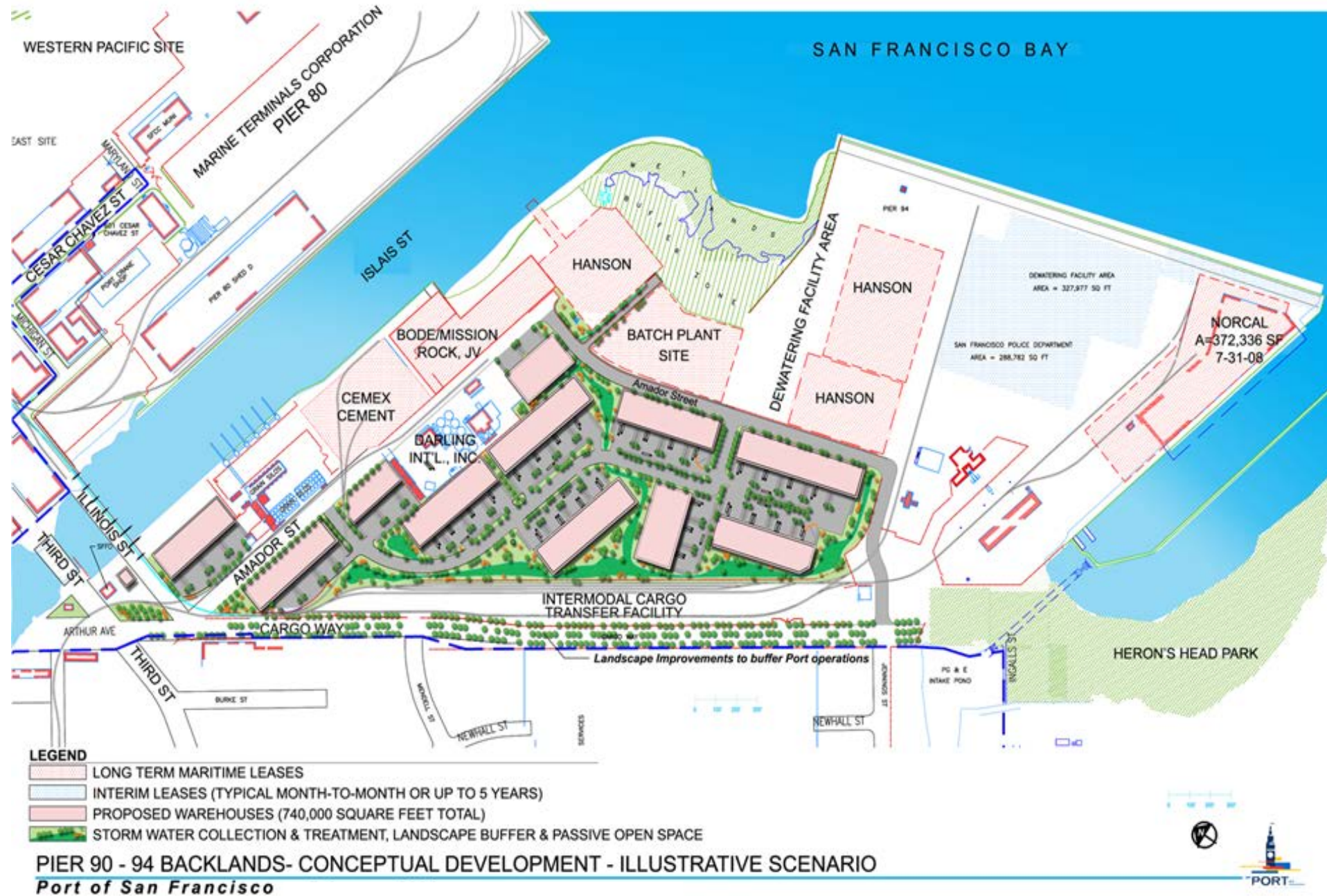




Photo by Noreen Weedon



Blue Greenway & Natural Habitat Areas

- Pier 94 Wetlands & Herons Head Park & Eco Center
- Parks and Water Recreation
- Community & Agency Partnerships



Maintaining an Industrial Base in SF's Economy

- Designated as a Priority Production Area by ABAG
- City's Produce Market, SFMTA & PUC transportation & water infrastructure
- PDR and light manufacturing businesses and jobs

Community Benefits

Site Improvements

- S. Waterfront Beautification Policy
- Property repairs and Shoreline enhancements
- Streetscape, public art, wayfinding and interpretation

Economic Business & Jobs

- Port Racial Equity Plan actions
- Increase racially diverse business and contract opportunities
- Port and tenant job and workforce training

Open Space & Recreation

- Blue Greenway parks, park programming
- Water recreation

Environmental Stewardship & Education

- Nature restoration, biodiversity and enhancements
- Youth environmental education programs (e.g. Greenagers)

Partnerships

- District 6 & 10 community organizations
- City and public agencies
- Environmental and recreation organizations
- Port Tenant sponsorships





Questions & Discussion
Thank You!



Photo courtesy of the Port of San Francisco

ISLAIS CREEK - VISION AND COMMUNITY GOALS

“Islais Creek adapts to flood risks while ensuring healthy and resilient communities”



- A socially & environmentally resilient neighborhood
- Authentic & transparent public engagement during & beyond planning
- A transportation system that is resilient & adaptable to flood risk
- A healthy environment for residents, workers & ecologies
- A sustainable economy that benefits local residents, workers & industries



COMMUNITY FEEDBACK: ISLAIS CREEK "ASSET MAPPING" EXERCISE

What people love about the waterfront



- Candlestick Point
- Neighborhoods
- Parks & Open Space
- Heron's Head
- Water Access
- Families & Communities
- Community Based Organizations
- Bayview Opera House
- Schools

Important assets & facilities



- Housing
- Jobs & Workforce Development
- Commercial Corridors & Local Industry
- Critical Facilities
- Transportation
- Third Street Bridge
- Utilities
- Wastewater/ Sewage

Concerns during a disaster

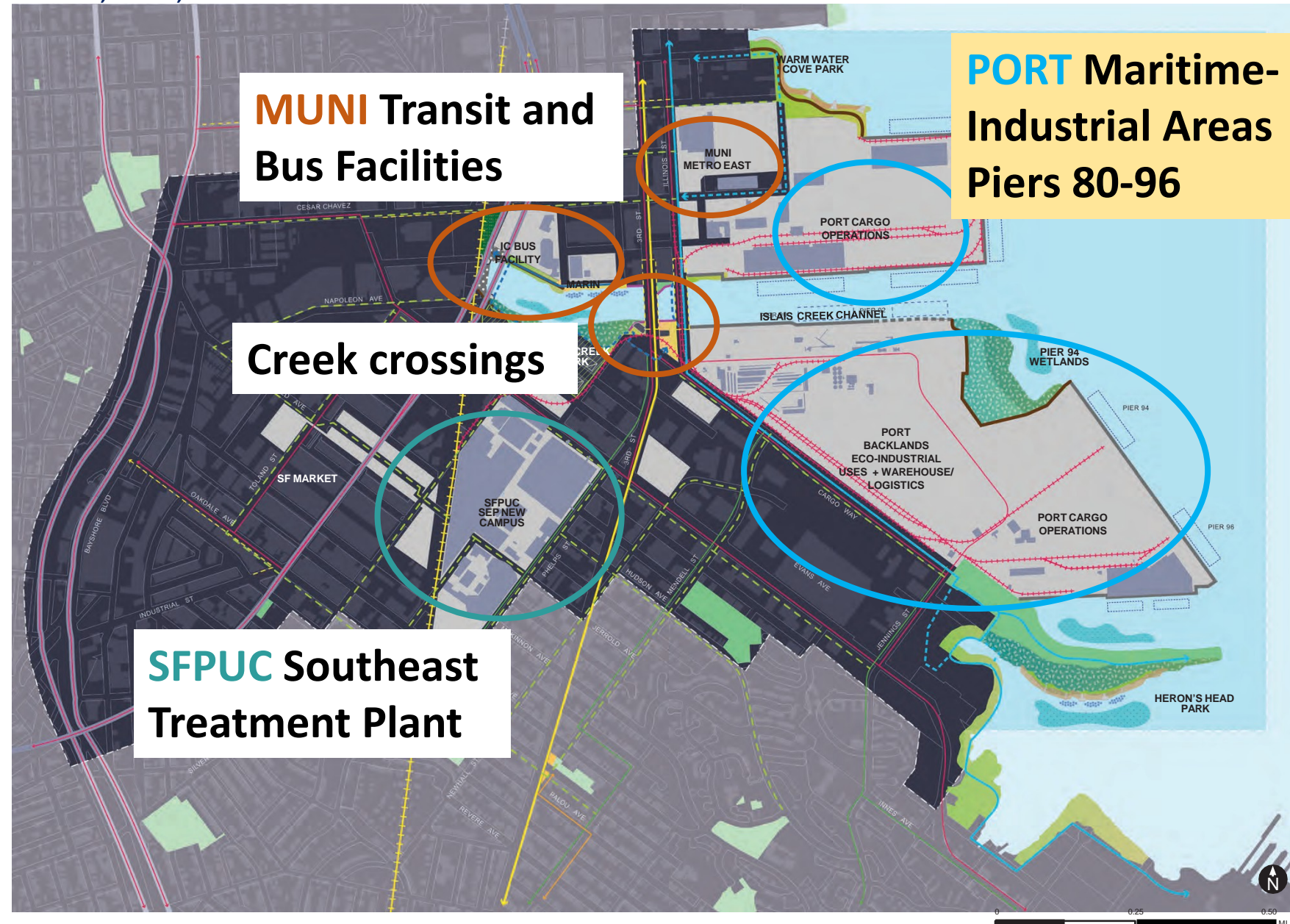


- Emergency Response
- Transportation
- Hospital Access
- Neighborhood Function
- Water Quality
- Contaminated lands
- Bayview/Hunters Point



CRITICAL ASSETS

MUNI, PUC, & PORT



Key strategies & community goals: summary

Healthy Environment

Robust transportation

Sustainable economy

