



San Francisco
Planning



US Army Corps
of Engineers



Waterfront Resilience Program

Islais Creek / Bayview Waterfront Resilience
Community Meeting #2 Thursday
January 30, 2020

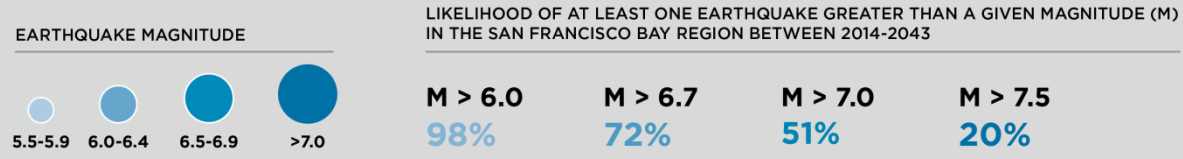
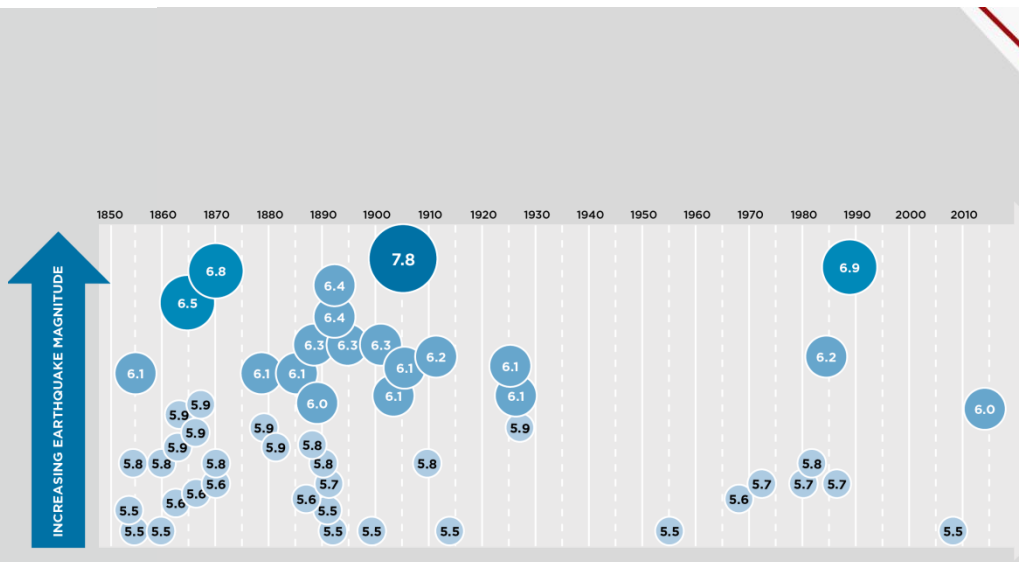
WELCOME

WE WILL COVER

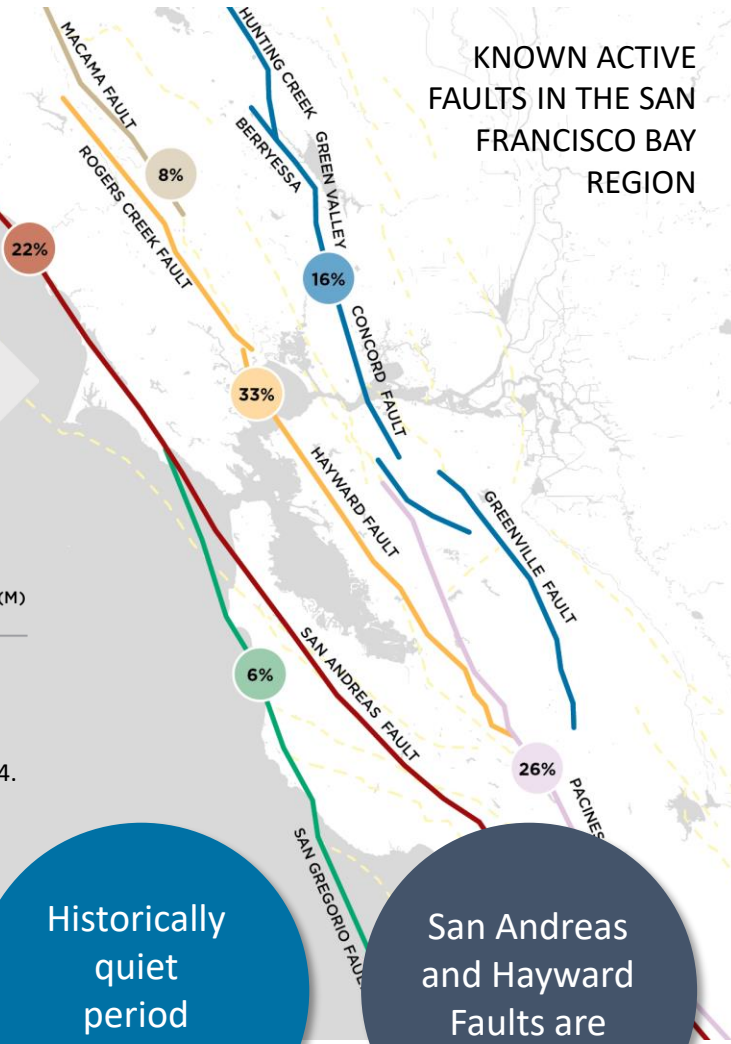
- Opening Remarks
- Recap: What we've heard from you so far
- Hazards and Climate Risk in Islais Creek / Bayview
- Draft Goals for Islais Creek / Bayview
- Test the Goals (small groups)
- Report Back (big group)



EARTHQUAKE RISK IN SAN FRANCISCO



TIMELINE OF MAGNITUDE 5.5 AND GREATER EARTHQUAKES IN THE SAN FRANCISCO BAY REGION 1850–2014.



KNOWN ACTIVE FAULTS IN THE SAN FRANCISCO BAY REGION

72% likelihood of a major earthquake by 2043

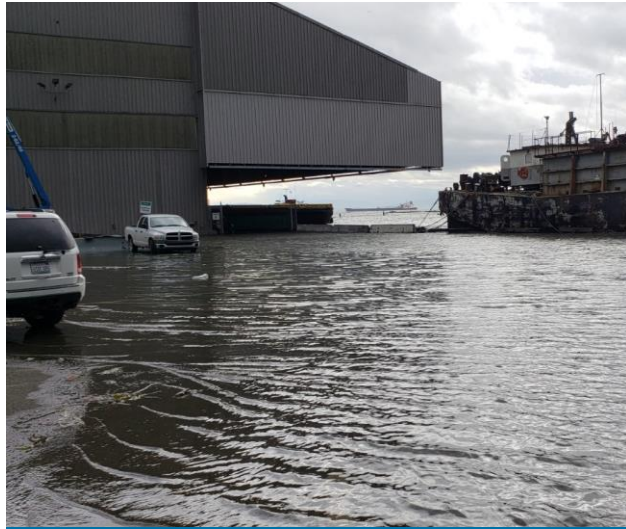
Historically quiet period since 1906

San Andreas and Hayward Faults are highest risks

FLOOD RISK IN SAN FRANCISCO



INTERMITTENT AND LOCALIZED FLOODING TODAY



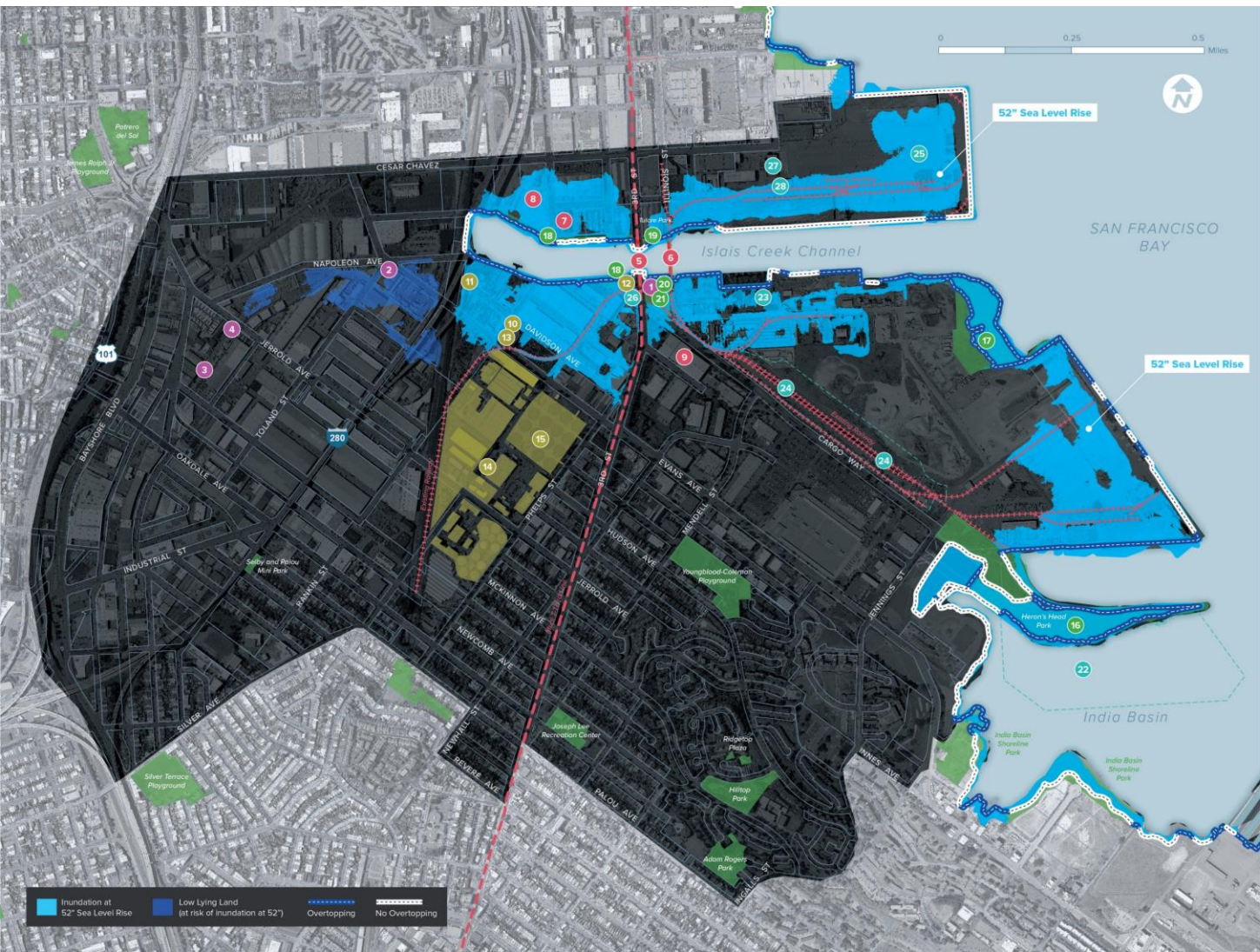
INTERMITTENT AND LOCALIZED FLOODING TODAY



FUTURE SLR RISK

- San Francisco faces increasing flood risk
- Some shoreline areas already experience flooding
- 100 year flood event = significant disruption to critical assets and services
- San Francisco’s shoreline will flood more frequently and new areas will begin to experience flooding in the coming decades

FLOOD RISK AROUND ISLAIS CREEK

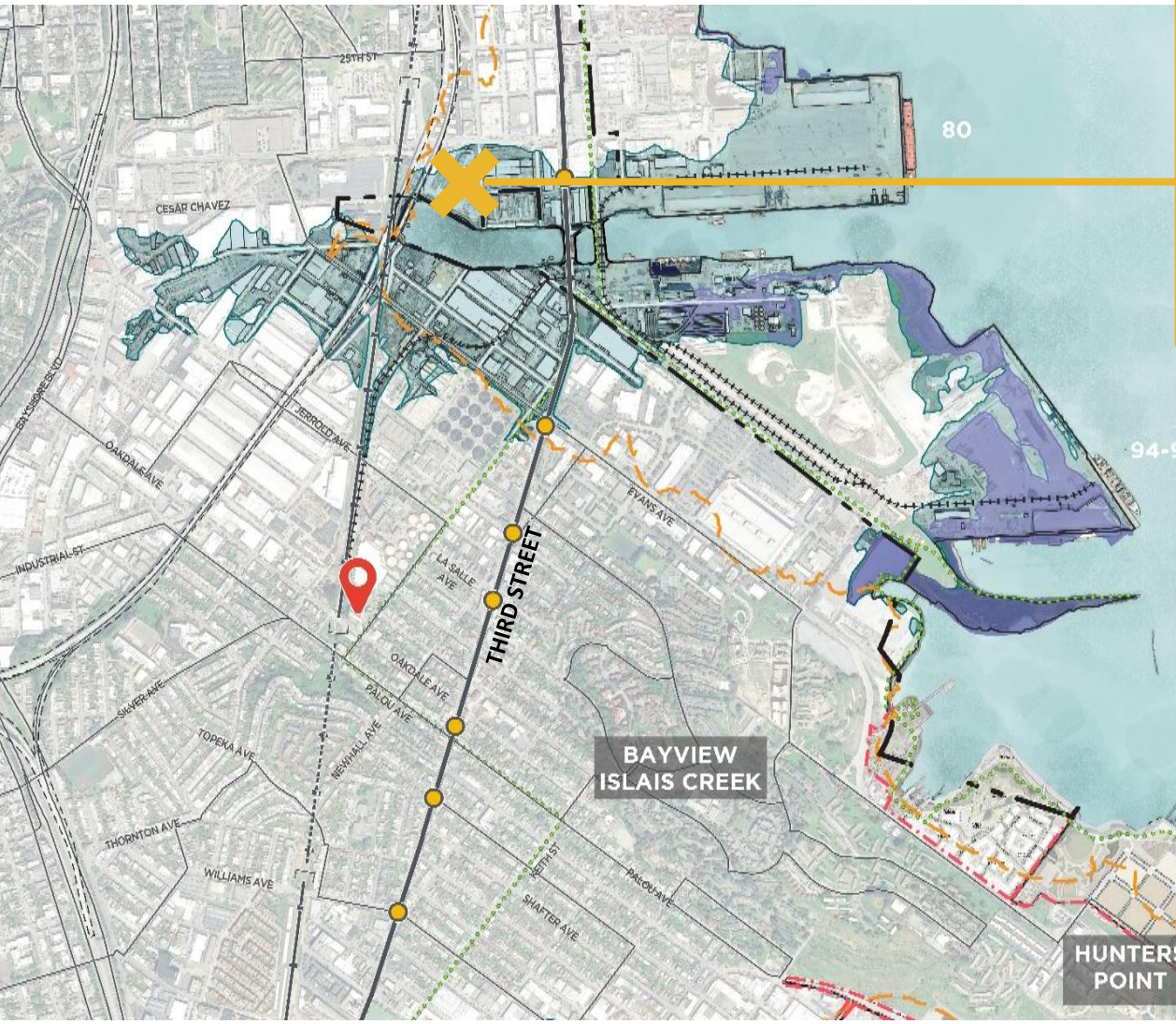


Bayview North Islais Creek



- PUBLIC SAFETY**
 - 1 Fire Station #25
 - 2 Forensic Service Police Department
 - 3 Emergency Firefighting Water System (EFWS) Yard
 - 4 Fire Station #9
- MOBILITY**
 - 5 3rd Street Bridge
 - 6 Illinois Street Bridge
 - 7 Marin Yard
 - 8 Islais Creek Division
 - 9 Burke Warehouse
- WASTE WATER**
 - 10 Rankin Minor Pump Station
 - 11 Davidson Minor Pump Station
 - 12 Booster Major Pump Station
 - 13 Bruce Flynn Pump Station
 - 14 Southeast Major Pump Station
 - 15 Southeast Treatment Plant
- OPEN SPACE**
 - 16 Herons Head
 - 17 Pier 92 Wetlands
 - 18 Islais Plaza/Islais Creek Park
 - 19 Tulare Park
 - 20 Fireman's Plaza Park
 - 21 Gateway Park
- PORT**
 - 22 India Basin Marina
 - 23 Pier 92: industrial, cargo ship loading
 - 24 Intermodal Container Transfer
 - 25 Pier 80: working pier and railroad connection
 - 26 3rd Street/Cargo Way Triangle
 - 27 Pier 80 Administration Building
 - 28 Pier 80 Quonset Building

MUNI FACILITIES

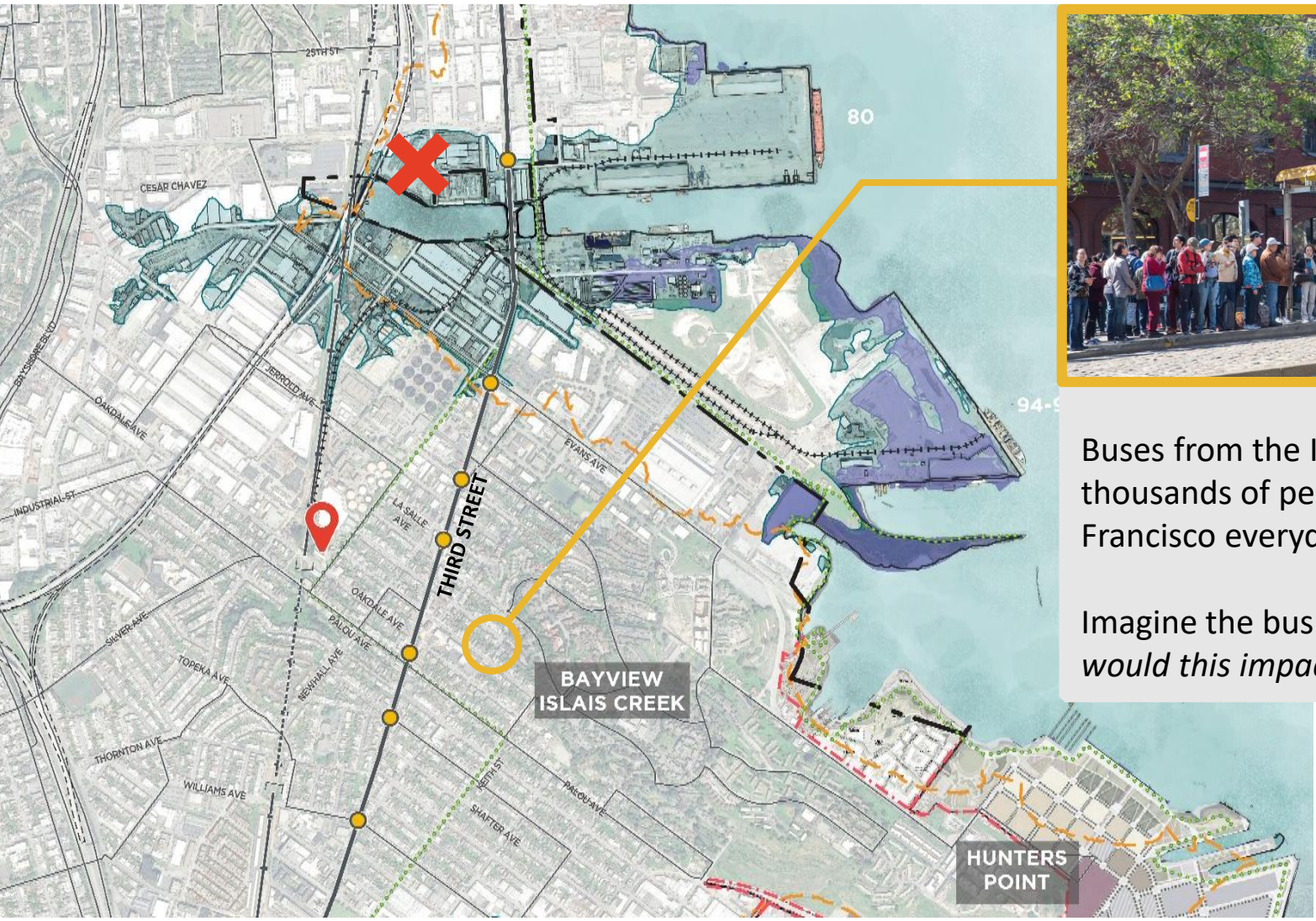


Islais Creek Muni Facility

- Maintenance, operations, and storage for motor coach fleet
- 165 buses in yard
- 200 bus drivers
- 30 - 80 maintenance workers
- 6 – 8 inches of flooding during storms



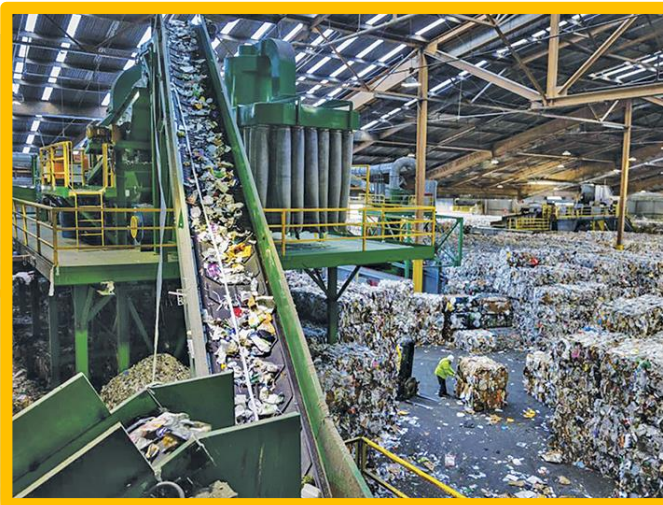
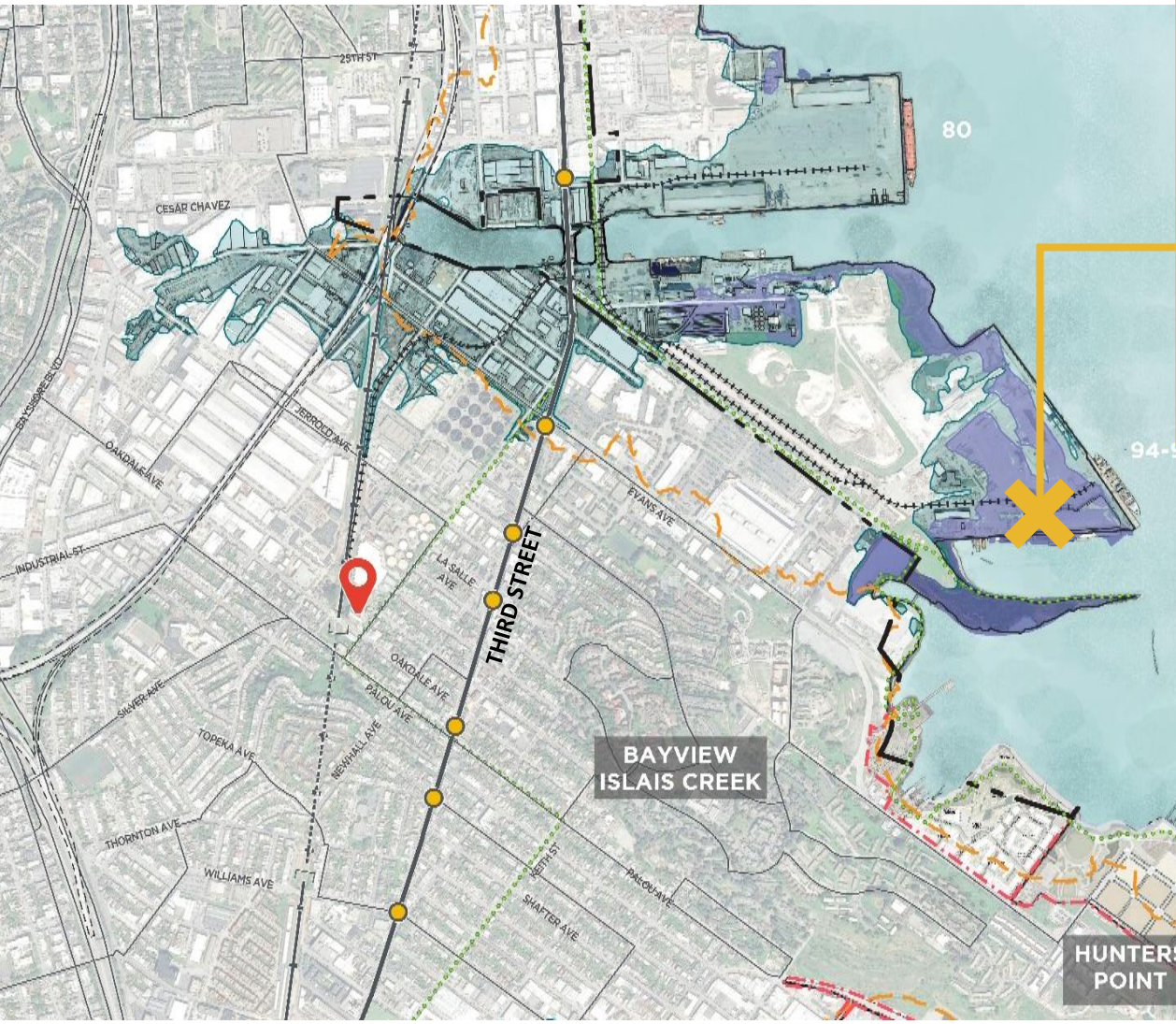
MUNI FACILITIES



Buses from the Islais Facility moves thousands of people around San Francisco everyday.

Imagine the bus not coming. *How would this impact your family?*

RECOLOGY

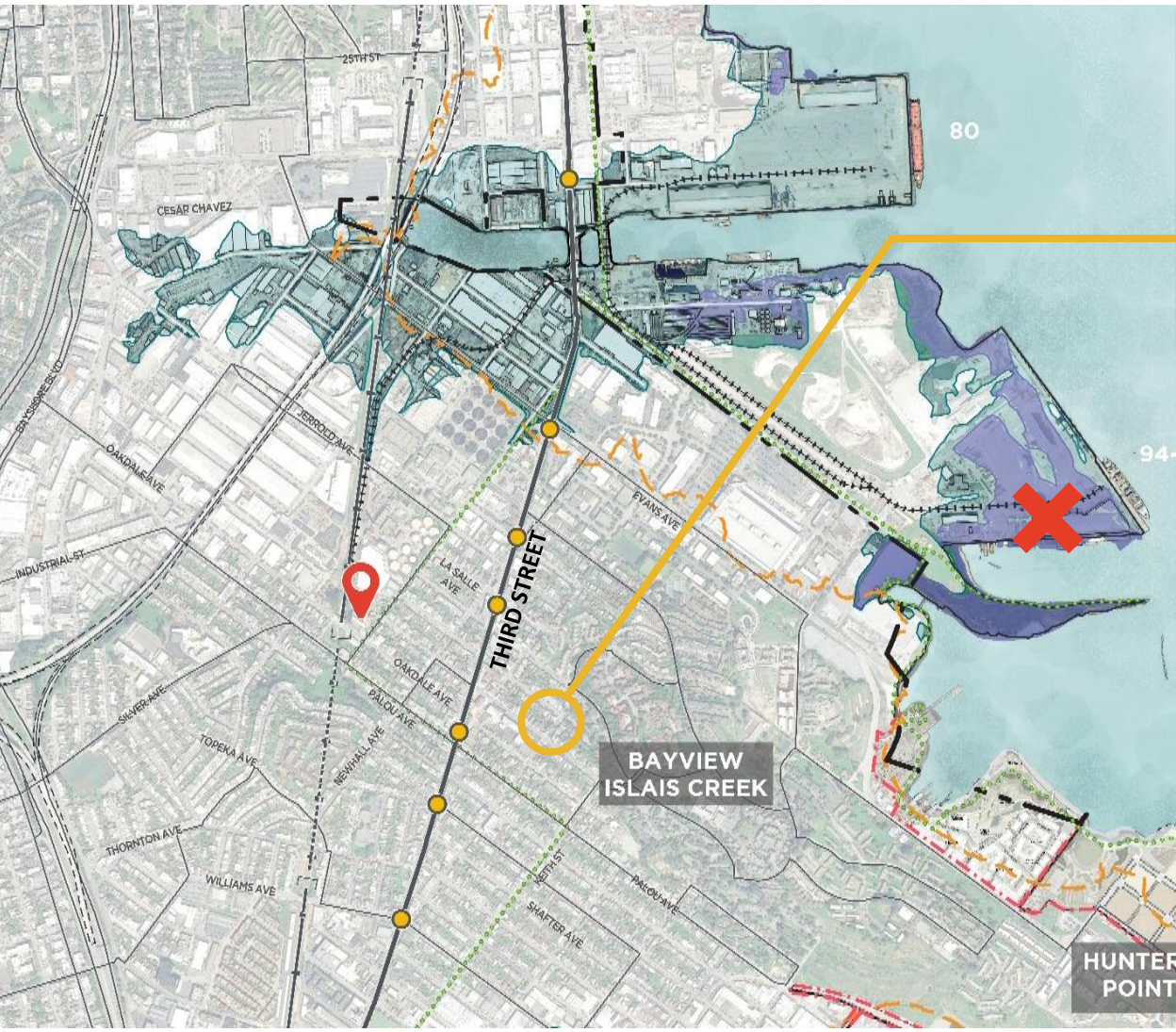


Recology Central

- Receives and exports all of SF recycling
- 210 employee-owners
- 90% of employees are from Bayview Hunters Point



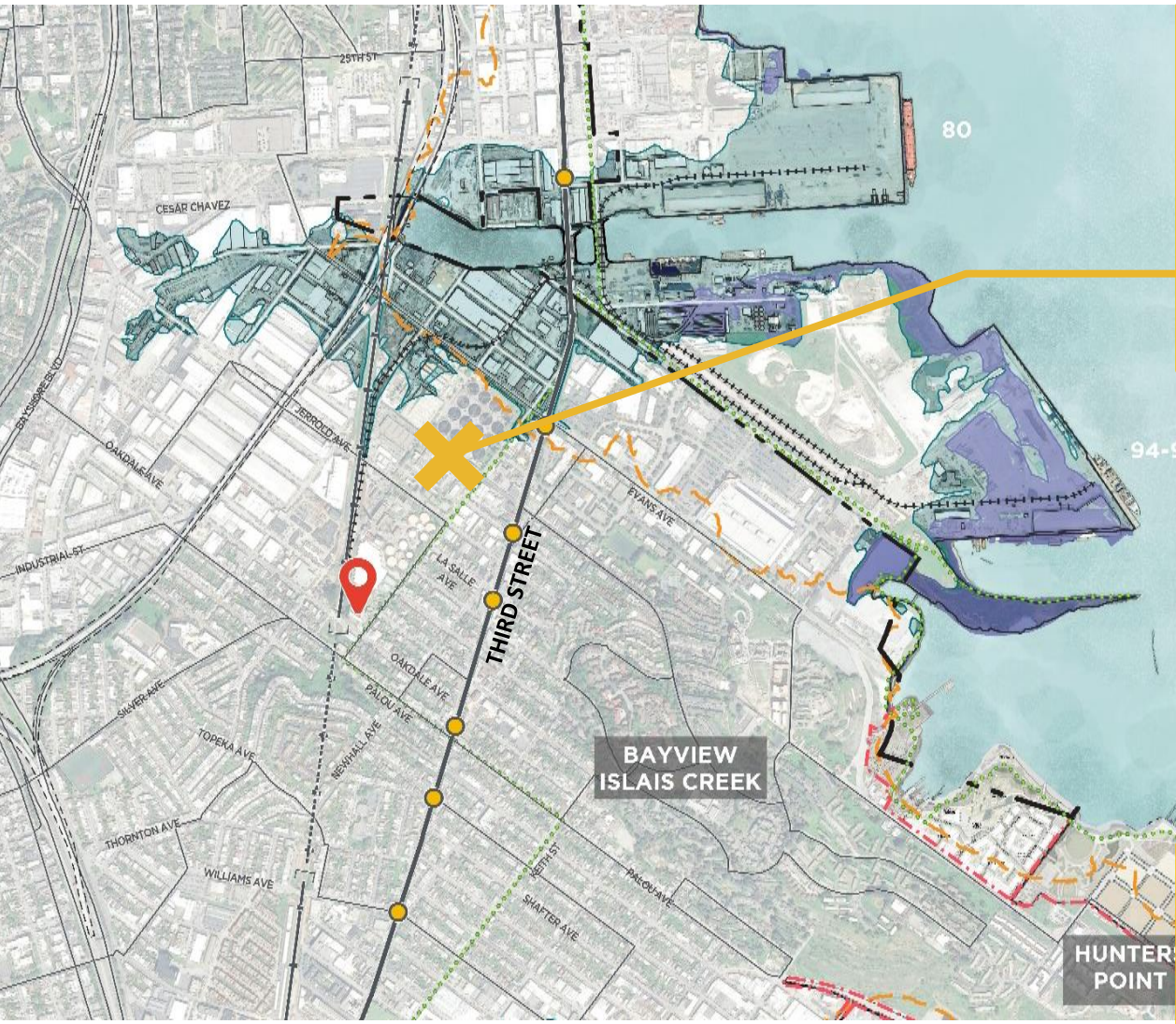
RECOLOGY



Imagine the recycling not getting picked up. *How would this impact the environmental quality of your neighborhood?*

Imagine Bayview Recology employees not being able to go to work. *How would it impact their ability to support their families?*

SOUTHEAST WASTEWATER TREATMENT PLANT

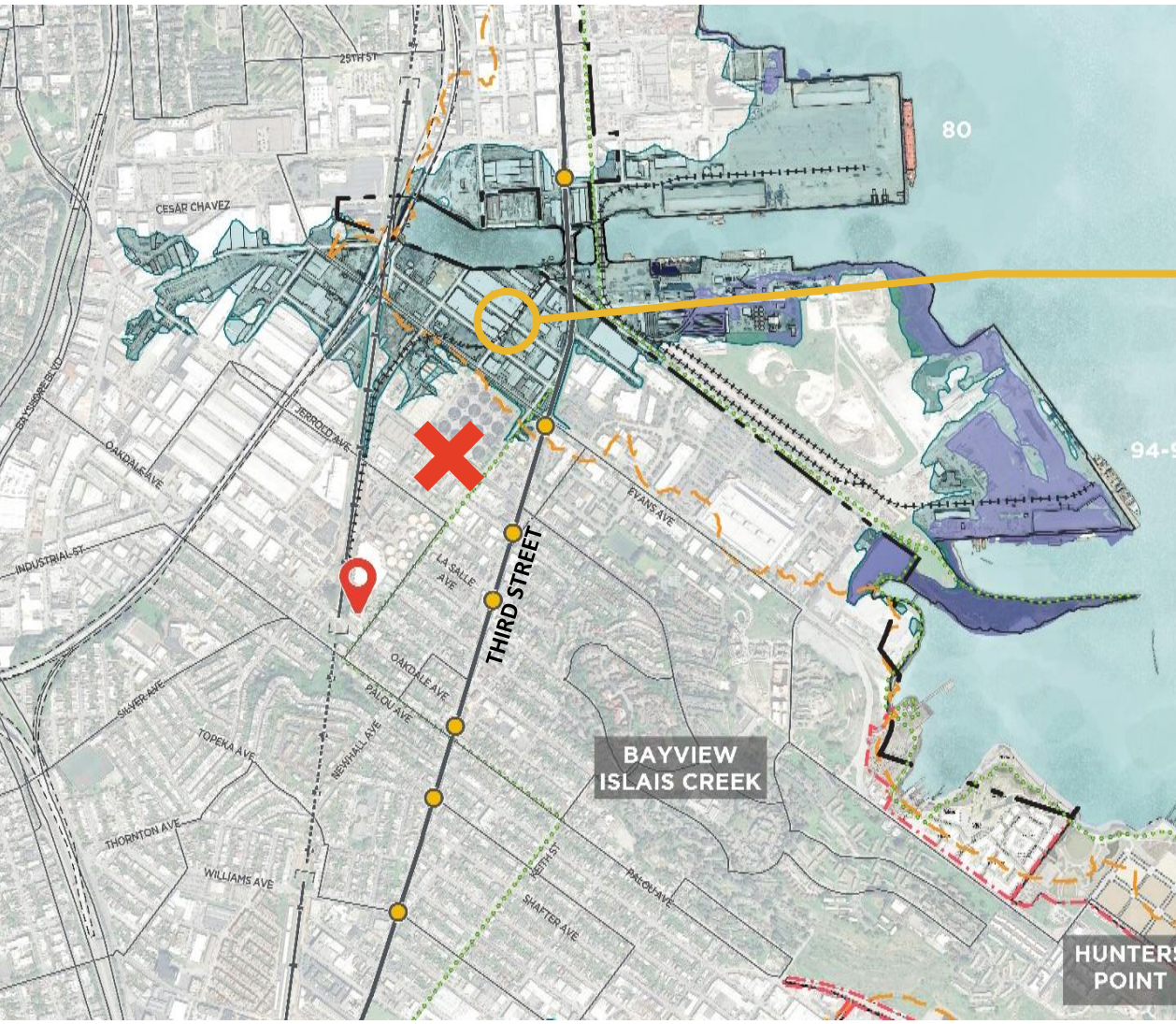


Southeast Wastewater Treatment Plant and other infrastructure

- Treats 80% of SF's wastewater
- Home to the CityWorks and other youth programs and green jobs
- Opportunity for more local hire and local workforce development



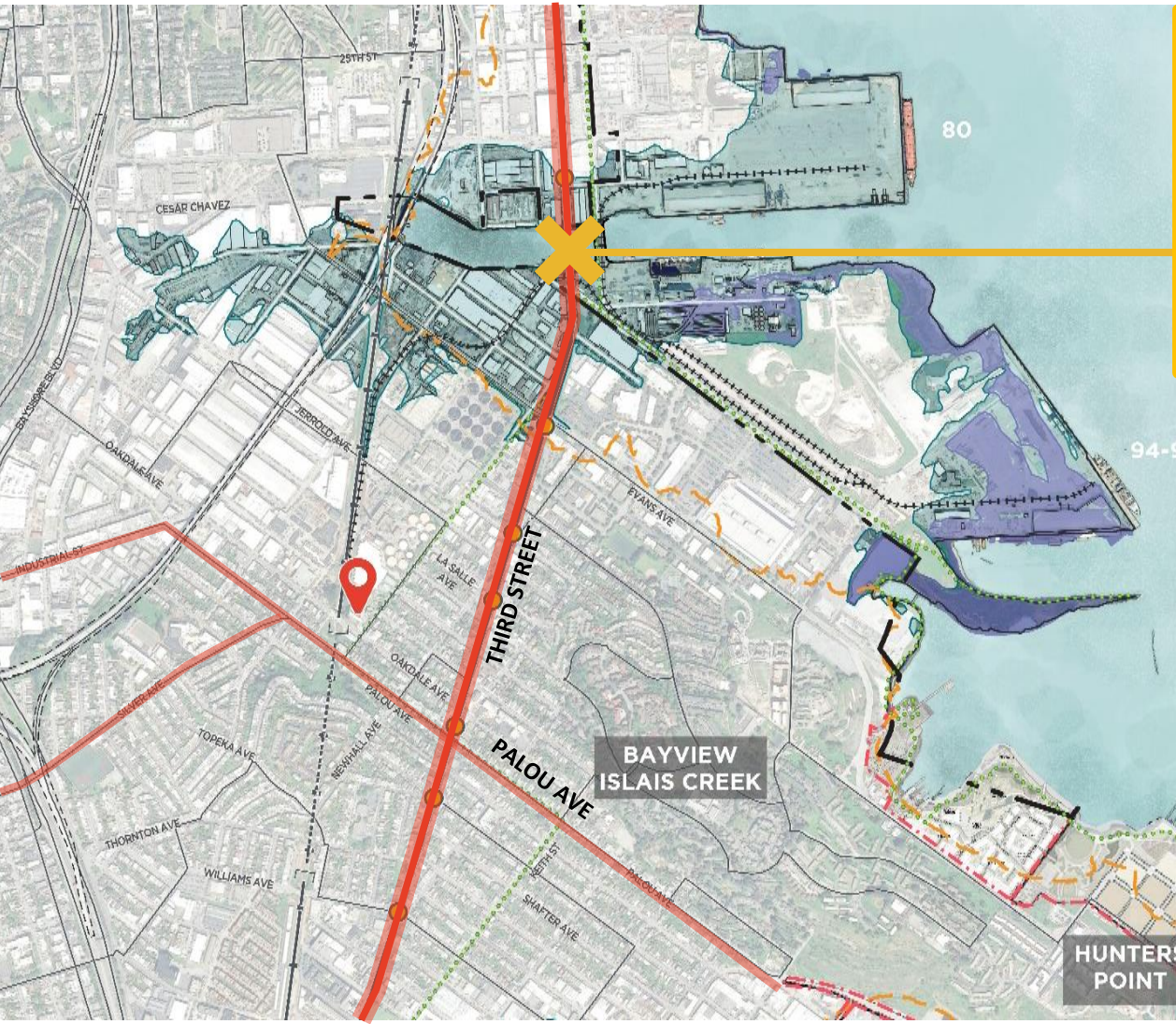
SOUTHEAST WASTEWATER TREATMENT PLANT



Imagine the storm and sewer lines backing up, overflowing into the street and the creek. *How does this impact the environmental quality of Bayview and Islais neighborhoods?*

Flood events would burden existing staff and impact their ability to train new workers. *How might this impact workforce development of Bayview residents?*

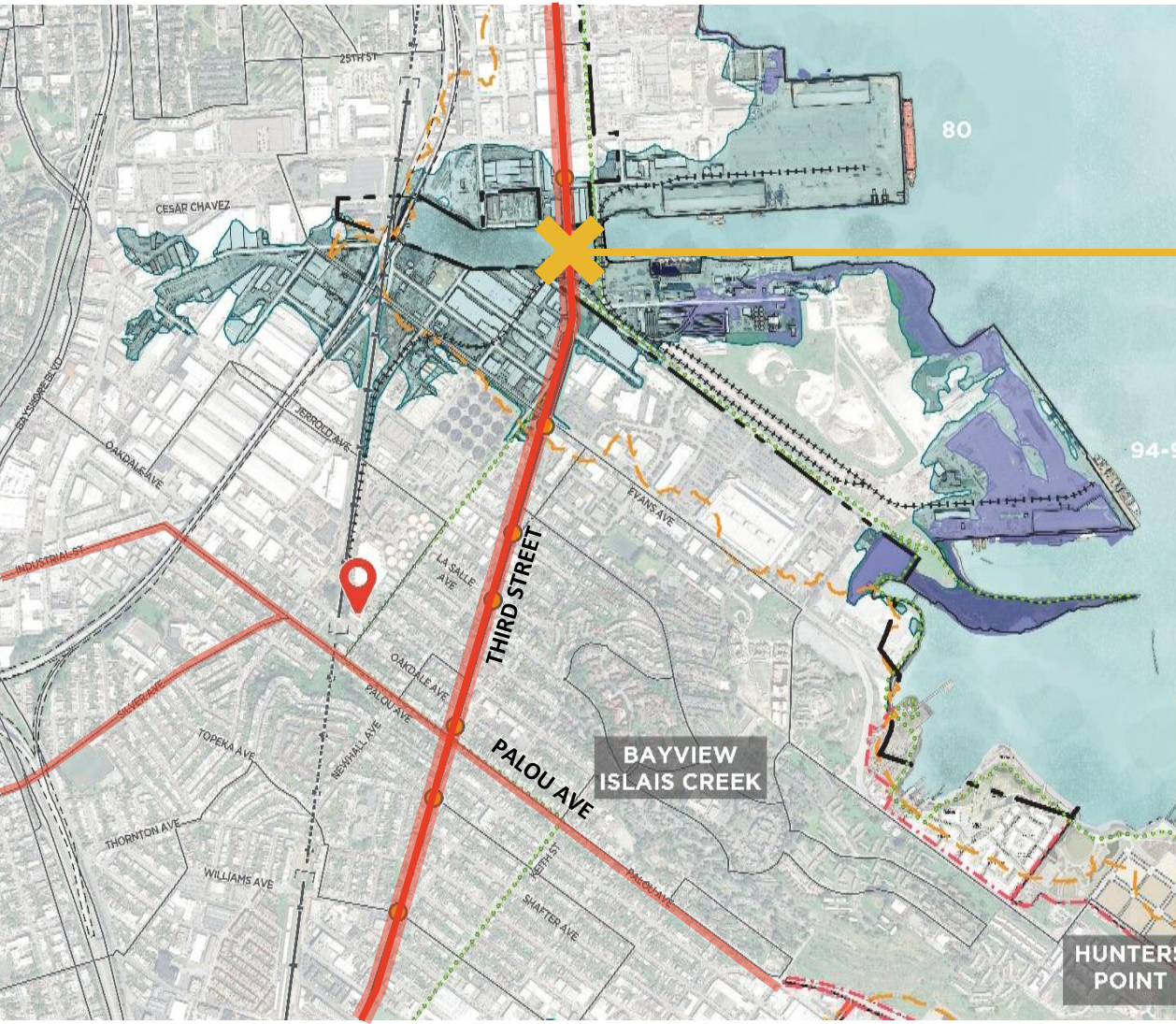
THIRD STREET BRIDGE



3rd Street and Illinois Street Bridges
Both are critical north-south links for cars, trucks, trains, and bikes.



THIRD STREET BRIDGE

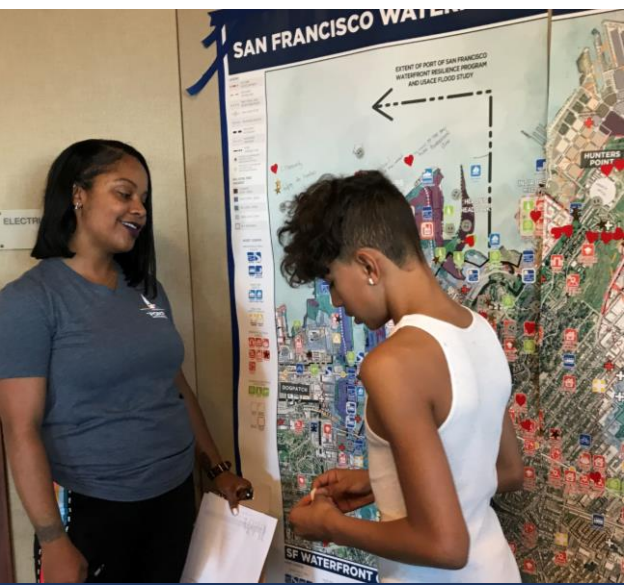


Imagine an ambulance not being able to get to your neighborhood in the event of an emergency.

Imagine the T-Third train not running south of 25th Street, or cars not able to cross the bridges. *How would this impact your life?*



SOUTHERN WATERFRONT RESILIENCE OUTREACH SO FAR



MIXERS AND POP-UPS



EVENT OUTREACH



“ROADSHOW” PRESENTATIONS

- Hired RDJ to assist with outreach and engagement
- Presentations at Bayview Merchants Association, Southeast Facility Commission, Bayview CAC, and Hunters Point CAC
- Community “Pop-Ups” and “Mixers”
- Ongoing outreach at community events
- Paper and Web-based surveys

FEEDBACK FROM 'ASSET MAPPING' EXERCISE



- Bayview Opera House
- Candlestick Point
- Neighborhoods
- Parks and Open Space
- Heron's Head
- Water Access
- Families and Communities
- Schools
- Community Based Organizations

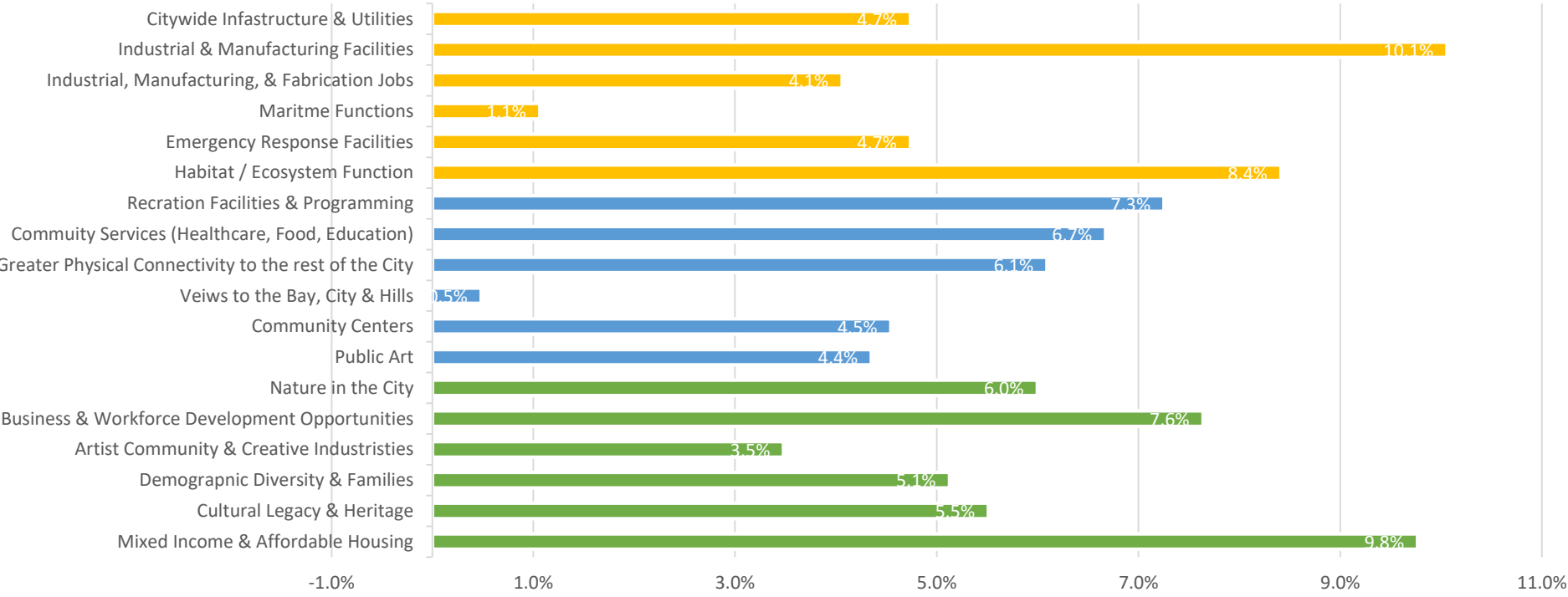


- Housing
- Wastewater/Sewage
- Third Street Bridge
- Transportation and Utilities
- Critical Facilities
- Jobs and Workforce Development
- Commercial Corridors and Local Industry



- Emergency Response
- Transportation
- Hospital Access
- Neighborhood Function
- Water Quality
- Contaminated lands
- Bayview/Hunters Point

FEEDBACK FROM 'CO-BENEFITS' SURVEYS



AFFORDABLE HOUSING



INDUSTRY & MANUFACTURING



WORKFORCE DEVELOPMENT



NATURE IN THE CITY

draft SOUTHERN WATERFRONT ADAPTATION GOALS

PARTICIPANT'S HANDOUT

TABLE NUMBER:

WELCOME!

Islais Creek Adaptation Strategy
Waterfront Resilience Program,
Southern Waterfront
Workshop #2, Thursday January 30th
SE Community Facility

SOUTHERN WATERFRONT

DRAFT GOALS

COMMUNITY & SOCIAL EQUITY

A SOCIALLY AND ENVIRONMENTALLY RESILIENT NEIGHBORHOOD

- Encourage neighborhood vitality, character, and diversity with more mixed-income housing
- Adapt buildings, open spaces and services that ensure the safety and preparedness of the district and city in the case of a flood emergency
- Develop equitable solutions with and for a wide variety of community members, including youth, seniors, families and people of color

GOVERNANCE

AUTHENTIC AND TRANSPARENT PUBLIC ENGAGEMENT DURING AND BEYOND THE PLANNING PHASE

- Build a long-lasting basis of support with a transparent, authentic engagement process
- Engage with youth to build long-term understanding, capacity, and stewardship
- Acknowledge the significance of the newly designated African American Cultural District at Bayview Hunters Point, and other cultural groups, as central to developing future visions
- Engage with youth to build long-term understanding, capacity, and stewardship

TRANSPORTATION

A TRANSPORTATION SYSTEM THAT IS RESILIENT AND ADAPTABLE TO FLOOD RISK

- Adapt key transportation facilities to flooding to maintain operations, service and connectivity
- Improve connectivity between Bayview and other neighborhoods
- Improve pedestrian and bike connections to provide resilience during near term periodic flood events
- Create accessible transportation between the waterfront, the City and the region

ENVIRONMENT

A HEALTHY ENVIRONMENT FOR RESIDENTS, WORKERS, AND ECOLOGIES

- Identify solutions and strategies that benefit the entire Islais Creek watershed
- Prioritize nature-based solutions and green infrastructure to mitigate floods, improve stormwater management and support local ecology
- Improve access to and create new resilient open spaces along the creek and bay shorelines to provide much needed recreational space for the surrounding neighborhoods

ECONOMY

A SUSTAINABLE ECONOMY THAT BENEFITS LOCAL RESIDENTS, WORKERS, AND INDUSTRIES

- Adapt flood-prone areas that currently support existing jobs, small businesses and local artists
- Support local, blue collar industrial jobs
- Use the planning process of this project as an opportunity to train and mentor individuals in the fields of design, planning and engineering
- Maintain and increase of women- and minority-owned businesses, community benefit organizations, worship centers, and arts and culture organizations

sfportresilience.com
 sfplanning.org/islais

SOUTHERN WATERFRONT ADAPTATION draft VISION & GOALS

A vision for Islais Creek that adapts to flood risks while ensuring healthy and resilient communities.

Community and Social Equity

A socially and environmentally resilient neighborhood

Governance

Authentic and transparent public engagement during & beyond Planning

Transportation

A transportation system that is resilient and adaptable to flood risk

Environment

A Healthy environment for residents, workers and ecologies

Economy

A sustainable economy that benefits local residents, workers, and industries

draft ADAPTATION GOAL: COMMUNITY & EQUITY



A socially and environmentally resilient neighborhood

Develop equitable solutions for a wide variety of community members



Adapt buildings, open spaces & services for flooding that ensure safety & preparedness



draft ADAPTATION GOAL: GOVERNANCE

Identify & share individual histories & stories about Islais Creek

Build a long-lasting basis of support with a transparent, authentic engagement process



Engage with youth to build long-term understanding, capacity & stewardship



Authentic and transparent public engagement during and beyond the Planning phase



Acknowledge the significance of the newly designated African American Cultural District



draft ADAPTATION GOAL: TRANSPORTATION

A
transportation
system that is
resilient and
adaptable to
flood risk



draft ADAPTATION GOAL: ENVIRONMENT



Identify solutions and strategies that benefit the entire Islais Creek watershed



A healthy environment for residents, workers and ecologies



Prioritize nature-based solutions & green infrastructure



Improve access to and create new resilient open spaces along the creek & shoreline

draft ADAPTATION GOAL: ECONOMY



Adapt flood-prone areas that support local jobs, small businesses & artists



Support local, blue collar industrial jobs



Maintain & increase women & minority-owned businesses, worship centers & cultural organizations



Use the planning process of this project to train & mentor individuals in design, planning and engineering



A sustainable economy that benefits local residents, workers, and industries

ACTIVITY PART 1: FEEDBACK ON GOALS (20 mins)

FACILITATOR WORKSHEET		SOUTHERN WATERFRONT	
TABLE NUMBER: <input type="text"/>		DRAFT GOALS	
<p>COMMUNITY & SOCIAL EQUITY</p> <p>ENVIRONMENT</p> <p>TRANSPORTATION</p> <p>GOVERNANCE</p> <p>ECONOMY</p>	<p>A VISION FOR ISLAIS CREEK THAT ADAPTS TO FLOOD RISKS WHILE ENSURING HEALTHY AND RESILIENT COMMUNITIES</p>	<p>I SUPPORT THIS GOAL LANGUAGE AS WRITTEN</p> <p>COMMENTS:</p>	<p>I SUPPORT THIS GOAL LANGUAGE WITH MODIFICATIONS</p>
	<p>A SOCIALLY AND ENVIRONMENTALLY RESILIENT NEIGHBORHOOD</p> <ul style="list-style-type: none"> Encourage neighborhood vitality, character, and diversity with more mixed-income housing Adapt buildings, open spaces and services that ensure the safety and preparedness of the district and city in the case of a flood emergency Develop equitable solutions with and for a wide variety of community members, including youth, seniors, families and people of color 	<p>I SUPPORT THIS GOAL LANGUAGE AS WRITTEN</p> <p>COMMENTS:</p>	<p>I SUPPORT THIS GOAL LANGUAGE WITH MODIFICATIONS</p>
	<p>AUTHENTIC AND TRANSPARENT PUBLIC ENGAGEMENT DURING AND BEYOND THE PLANNING PHASE</p> <ul style="list-style-type: none"> Build a long-lasting basis of support with a transparent, authentic engagement process Engage with youth to build long-term understanding, capacity, and stewardship Acknowledge the significance of the newly designated African American Cultural District at Bayview Hunters Point, and other cultural groups, as central to developing future visions Engage with youth to build long-term understanding, capacity, and stewardship 	<p>I SUPPORT THIS GOAL LANGUAGE AS WRITTEN</p> <p>COMMENTS:</p>	<p>I SUPPORT THIS GOAL LANGUAGE WITH MODIFICATIONS</p>
	<p>A TRANSPORTATION SYSTEM THAT IS RESILIENT AND ADAPTABLE TO FLOOD RISK</p> <ul style="list-style-type: none"> Adapt key transportation facilities to flooding to maintain operations, service and connectivity Improve connectivity between Bayview and other neighborhoods Improve pedestrian and bike connections to provide resilience during near term periodic flood events Create accessible transportation between the waterfront, the City and the region 	<p>I SUPPORT THIS GOAL LANGUAGE AS WRITTEN</p> <p>COMMENTS:</p>	<p>I SUPPORT THIS GOAL LANGUAGE WITH MODIFICATIONS</p>
	<p>A HEALTHY ENVIRONMENT FOR RESIDENTS, WORKERS, AND ECOLOGIES</p> <ul style="list-style-type: none"> Identify solutions and strategies that benefit the entire Islais Creek watershed Prioritize nature-based solutions and green infrastructure to mitigate floods, improve stormwater management and support local ecology Improve access to and create new resilient open spaces along the creek and bay shorelines to provide much needed recreational space for the surrounding neighborhoods 	<p>I SUPPORT THIS GOAL LANGUAGE AS WRITTEN</p> <p>COMMENTS:</p>	<p>I SUPPORT THIS GOAL LANGUAGE WITH MODIFICATIONS</p>
	<p>A SUSTAINABLE ECONOMY THAT BENEFITS LOCAL RESIDENTS, WORKERS, AND INDUSTRIES</p> <ul style="list-style-type: none"> Adapt flood-prone areas that currently support existing jobs, small businesses and local artists Support local, blue collar industrial jobs Use the planning process of this project as an opportunity to train and mentor individuals in the fields of design, planning and engineering Maintain and increase of women- and minority-owned businesses, community benefit organizations, worship centers, and arts and culture organizations 	<p>I SUPPORT THIS GOAL LANGUAGE AS WRITTEN</p> <p>COMMENTS:</p>	<p>I SUPPORT THIS GOAL LANGUAGE WITH MODIFICATIONS</p>
<p>ADDITIONAL COMMENTS:</p>			








ACTIVITY PART 1: FEEDBACK ON GOALS (20 mins)

FACILITATOR WORKSHEET

TABLE NUMBER: 3

SOUTHERN WATERFRONT

DRAFT GOALS

<p>A VISION FOR ISLAIS CREEK THAT ADAPTS TO FLOOD RISKS WHILE ENSURING HEALTHY AND RESILIENT COMMUNITIES.</p> 	<p> I SUPPORT THIS GOAL LANGUAGE AS WRITTEN /// </p>	<p> I SUPPORT THIS GOAL LANGUAGE WITH MODIFICATIONS </p>
<p>COMMUNITY & SOCIAL EQUITY</p> <p>A SOCIALLY AND ENVIRONMENTALLY RESILIENT NEIGHBORHOOD</p> <ul style="list-style-type: none"> • Encourage neighborhood vitality, character, and diversity with more mixed-income housing • Adapt buildings, open spaces and services that ensure the safety and preparedness of the district and city in the case of a flood emergency • Develop equitable solutions with and for a wide variety of community members, including youth, seniors, families and people of color 	<p> I SUPPORT THIS GOAL LANGUAGE AS WRITTEN /// </p>	<p> I SUPPORT THIS GOAL LANGUAGE WITH MODIFICATIONS </p>
	<p> COMMENTS: </p> <p>Ensure resiliency with seismic risks</p>	
	<p> COMMENTS: </p> <p>Encourage support of faith-based and youth groups</p>	

ACTIVITY PART 2: ARRANGE GOALS ALONG TIMELINE (20 mins)

STRENGTHEN

LIFE SAFETY PROJECTS AT
1 FEET OF SEA LEVEL RISE NOW - 2050

These maps show flooding from sea level rise, but not rain events. The City is developing updated flood maps that combine sea level rise with rain events.

ADAPT

TO FLOOD RISKS WITH
3 FEET OF SEA LEVEL RISE 2050 - 2100

These maps show flooding from sea level rise, but not rain events. The City is developing updated flood maps that combine sea level rise with rain events.

ENVISION

YOUR COMMUNITY WITH
5.5 FEET OF SEA LEVEL RISE 2100 - 2140

These maps show flooding from sea level rise, but not rain events. The City is developing updated flood maps that combine sea level rise with rain events.

WHICH OBJECTIVES DO WE PRIORITIZE IN EACH PHASE?
 HOW DO WE BALANCE ALL THE GOALS OVER TIME?

TABLE NUMBER:

sfportresilience.com
sfplanning.org/islais

ACTIVITY PART 2: ARRANGE GOALS ALONG TIMELINE (20 mins)

 <p>▶ Encourage neighborhood vitality, character, and diversity with more mixed-income housing</p> <p>COMMUNITY AND SOCIAL EQUITY</p>	 <p>▶ Adopt buildings, open spaces, and services for flooding that ensure safety and preparedness of the district and city in the case of a flood emergency</p> <p>COMMUNITY AND SOCIAL EQUITY</p>
 <p>▶ Develop equitable solutions with and for a wide variety of community members, including youth, seniors, families and people of color</p> <p>COMMUNITY AND SOCIAL EQUITY</p>	<div style="border: 1px solid purple; height: 100px; width: 100%;"></div> <p>COMMUNITY AND SOCIAL EQUITY</p>

COMMUNITY AND SOCIAL EQUITY

 <p>▶ Identify solutions and strategies that benefit the entire Islais Creek watershed</p> <p>ENVIRONMENT</p>	 <p>▶ Prioritize nature-based solutions and green infrastructure to mitigate floods, improve stormwater management and support local ecology</p> <p>ENVIRONMENT</p>
 <p>▶ Improve access to and create new resilient open spaces along the creek and bay shorelines to provide much needed recreational space for the surrounding neighborhoods</p> <p>ENVIRONMENT</p>	<div style="border: 1px solid green; height: 100px; width: 100%;"></div> <p>ENVIRONMENT</p>

ENVIRONMENT

 <p>▶ Build a long-lasting basis of support with a transparent, authentic engagement process</p> <p>GOVERNANCE</p>	 <p>▶ Engage with youth to build long-term understanding, capacity, and stewardship</p> <p>GOVERNANCE</p>
 <p>▶ Acknowledge the significance of the newly designated African American Cultural District at Bayview Hunters Point, and other cultural groups, as central to developing future visions</p> <p>GOVERNANCE</p>	 <p>▶ Identify and share individual histories and stories about Islais Creek to inform the Strategy</p> <p>GOVERNANCE</p>

GOVERNANCE

ACTIVITY PART 2: ARRANGE GOALS ALONG TIMELINE (20 mins)



▶ Adapt key transportation facilities to flooding to maintain operations, service and connectivity

TRANSPORTATION



▶ Improve connectivity between Bayview and other neighborhoods

TRANSPORTATION



▶ Improve pedestrian and bike connections to provide resilience during near term periodic flood events.

TRANSPORTATION



▶ Create accessible transportation between the waterfront, the City and the region

TRANSPORTATION

TRANSPORTATION



▶ Adapt flood-prone areas that currently support existing jobs, small businesses and local artists

ECONOMY



▶ Support local, blue collar industrial jobs

ECONOMY



▶ Use the planning process of this project as an opportunity to train and mentor individuals in the fields of design, planning and engineering

ECONOMY



▶ Maintain and increase of women- and minority-owned businesses, community benefit organizations, worship centers, and arts and culture organizations

ECONOMY

ECONOMY

ACTIVITY PART 2: ARRANGE GOALS ALONG TIMELINE (20 mins)



- ▶ Encourage neighborhood vitality, character, and diversity with more mixed-income housing



DRAFT GOALS
SOUTHERN WATERFRONT

**COMMUNITY AND
SOCIAL EQUITY**

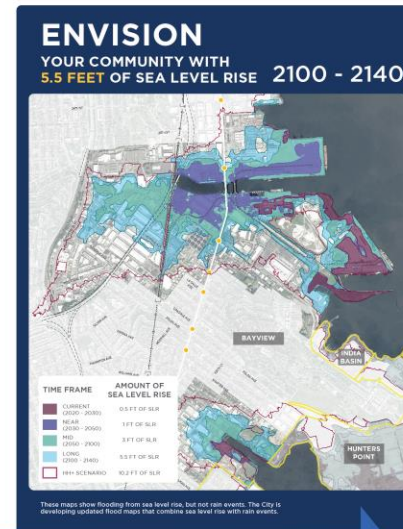
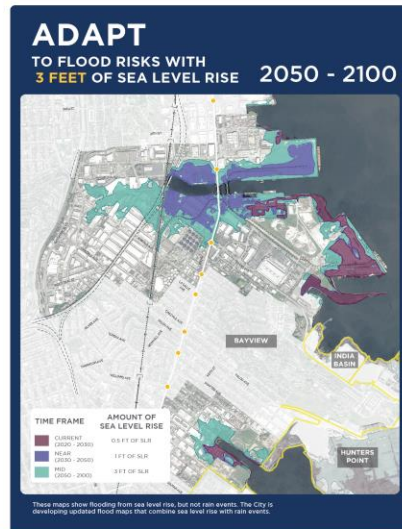
*(write
additional
goal ideas in
here)*



DRAFT GOALS
SOUTHERN WATERFRONT

**COMMUNITY AND
SOCIAL EQUITY**

ACTIVITY PART 2: ARRANGE GOALS ALONG TIMELINE (20 mins)



**WHICH OBJECTIVES DO WE PRIORITIZE IN EACH PHASE?
HOW DO WE BALANCE ALL THE GOALS OVER TIME?**

TABLE NUMBER:



ACTIVITY PART 3: REPORT BACK (2 mins each group)

What are the top two or three ways you might want to change the draft Goals and Objectives as written?

What groups or patterns did you notice when choosing draft Goals and Objectives to prioritize in the different time horizons?

SOUTHERN WATERFRONT RESILIENCE PUBLIC ENGAGEMENT



JOIN US!

Public engagement and participation is how we get to a plan and a project.

- **Meeting 1 and 1.5:** Learn about the project and sharing priorities
- **Meeting 2:** Shape the study goals
- **Meeting 3:** Envision alternatives
- **Meeting 4:** Evaluate alternatives
- **Meeting 5:** Identify actions and alternatives

There will be other opportunities for engagement, including meetings in the field, tours, and charrettes. Your suggestions are welcome!

THANK YOU!



Randy Quezada
Port of San Francisco

randolph.quezada@sfport.org
sfport.com



San Francisco
Planning

Robin Abad
San Francisco Planning Dept.

robin.abad@sfgov.org
sfplanning.org/projects/islais