



**NOTICE AND AGENDA FOR A JOINT MEETING OF THE
CENTRAL WATERFRONT ADVISORY GROUP (CWAG) AND THE
SOUTHERN WATERFRONT ADVISORY COMMITTEE (SWAC)**

Wednesday, January 15, 2020

6:00 to 8:00 p.m.

POWER STATION DEVELOPMENT SITE

420 23RD Street, east of Illinois Street (see location map below)
San Francisco, CA

Click on Highlighted Text below to Access Documents

1. Announcements and Introductions (6:00 – 6:15pm)*

- [Port Commission Matters of Interest](#)
- [Embarcadero Safe Navigation Center Advisory Group meetings](#)

2. Approval of Minutes/Meeting Notes (6:15 – 6:20pm)

- October 16, 2019 Draft CWAG minutes
- July 24, 2019 Draft SWAC minutes
- December 5, 2019 Draft Joint CWAG/SWAC meeting notes
- September 25, 2019 Draft SWAC meeting minutes

3. Power Station Mixed-Use Development Project – Informational presentation on the proposed development of the approximately 24 acre former Potrero Power Plant site to construct up to approximately 5.4 million gross square feet (gsf), of uses, including between approximately 2.5 and 2.7 million gsf of residential uses (about 2,500 to 2,700 dwelling units), between approximately 1.6 and 1.8 million gsf of commercial uses (office, R&D/life science, retail, hotel, and PDR), approximately 965,000 gsf of parking, approximately 50,000 gsf of community facilities, and approximately 25,000 gsf of entertainment/assembly uses. Most of the new buildings would range in height from 65 to 180 feet, with one building at 240 feet. Approximately 6.9 acres would be devoted to publicly accessible open space – David Beaupre, Port Development Project Manager and Enrique Landa, Associate Capital (6:20 – 7:10)

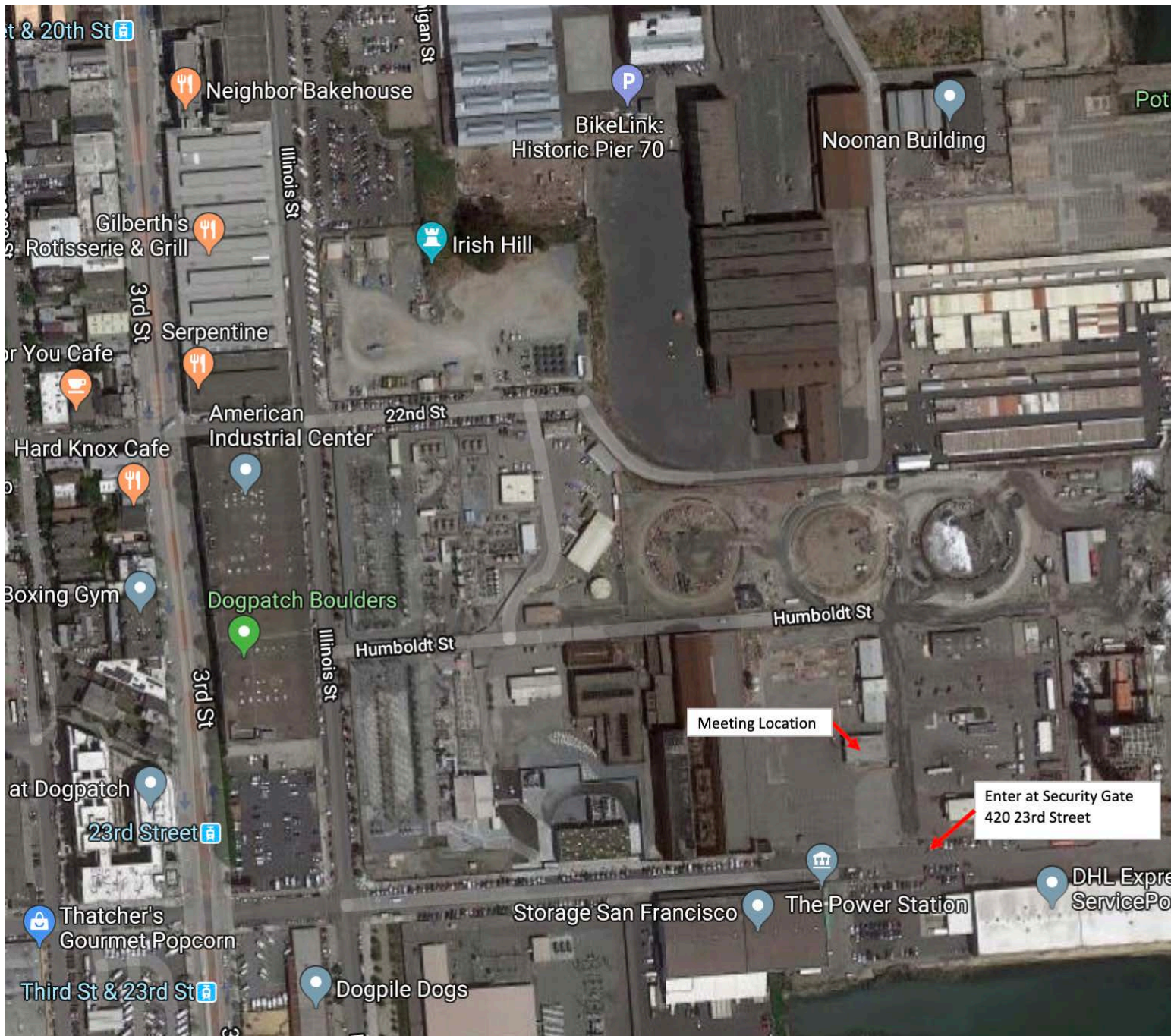
<https://www.potreropowerstation.com/history>
<https://sfplanning.org/potrero-power-station>

4. Port Advisory Committee Refresh – Discussion of Port proposal to refresh Port advisory committee areas and rosters to increase membership diversity and perspectives, as well as improve public discussions and communications on waterfront issues. – Diane Oshima, Deputy Director for Planning and the Environment (7:10 - 8:00 pm)

5. Adjourn (8:00 p.m.)

*Please note that times are approximate and agenda items may be taken out of order.

EMAIL NOTICE OF ADVISORY GROUP MEETINGS – If you would like to receive e-mail notification of advisory group meetings and receive agendas and minutes for CWAG matters contact Mark Paez, at mark.paez@sfpot.com or (415) 705-8674



Calendar of Upcoming Special Events

For a full listing of special events, please visit: <https://sfport.com/events/calendar>

Third Street Bridge Rehabilitation Project

Third Street Bridge ("Lefty O'Doul Bridge")

The Third Street Bridge, also known as the "Lefty O'Doul Bridge", is scheduled for rehabilitation work to sustain the integrity of the bridge and to address corrosion issues. The project will involve; repairs or replacement of damaged steel members, welds, concrete counterweights, support piles, bridge fenders, spot removal of rust and associated priming and recoating, removal and replacement of the steel bridge deck and other associated work. This is a unique project that will involve the use of underwater divers, barges, rafts, temporary installation of protective barriers and containment curtains. Construction activity on the main rehabilitation phase is anticipated to begin in early 2018 and is anticipated to last for approximately 18 months. At some points during the rehabilitation and construction phase, access to the bridge may be limited or closed to pedestrian, bicycle and vehicle traffic. We will be working closely with surrounding residents and businesses in the area to coordinate and minimize impacts during these anticipated closures. The bridge will remain open to pedestrians during San Francisco Giants home games. Nighttime and weekend construction activity may be required. Full traffic plan with detours and alternative routes will be made available as the project nears. *Please note that the construction schedule is subject to change due to rain, equipment breakdown, and/or unforeseen field conditions. Please see posted "No Parking" barricade signs for exact parking restrictions during construction.

For updates, alternative routes and more information, please visit: <http://www.sfpport.com/thirdstreetbridge>

Language Access

English:

At the Port of San Francisco, it is our policy to provide free language assistance to Limited English Speaking (LEP) individuals upon request. We are committed to ensuring that persons with limited English proficiency are given equal access to the Port's services, programs, public land and facilities.

For questions or assistance with language access related matters please contact:

- Port of San Francisco Language Access Liaison:
 - Matthias Giezendanner, Business Services Supervisor
 - Email: Matthias.Giezendanner@sfport.com
 - Telephone: (415) 274-0471

Spanish

Nuestra política en el Puerto de San Francisco está centrada en proveer asistencia gratuita a las personas de dominio limitado del idioma inglés (LEP, *siglas en inglés*) que la pidan. Estamos comprometidos a asegurar que las personas de dominio limitado del idioma inglés tengan el mismo acceso a servicios, programas, instalaciones y terrenos públicos del Puerto.

Si tiene preguntas o si necesita ayuda con asuntos relacionados con el acceso a idioma por favor, póngase en contacto con:

Agente de Acceso a Idiomas del Puerto de San Francisco

Matthias Giezendanner, Supervisor de Servicios Empresariales

Correo electrónico: Matthias.Giezendanner@sfport.com

Teléfono: (415) 274-0471

Chinese

三藩市港務局 (Port of San Francisco) 當局的政策規定, 須應請求向英語能力有限 (LEP) 人士提供免費的語言協助。本局致力於確保英語能力有限人士能平等使用港務局 (Port) 的各項服務、計劃、公眾用地及設施。

如有疑問或需要提供語言服務相關事宜的協助, 請聯絡:

- 三藩市港務局語言服務聯絡員:
 - Matthias Giezendanner, 商務主管
 - 電郵: Matthias.Giezendanner@sfport.com

Filipino

Sa Port ng San Francisco, patakaran naming magbigay ng libreng tulong sa wika sa mga taong Limitado ang Pagsasalita sa Ingles (Limited English Proficient- LEP). May pananagutan kaming siguraduhin na lahat nakukuha rin ang mga tao na limitado ang pagsasalita sa Ingles ng mga kaparehong serbisyo, programa, pampublikong lupa at pasilidad ng Port na kagaya ng iba.

Para sa mga katanugan o sa tulong sa mga bagay na kaugnay sa pag-access sa wika puwedeng kontakin si:

- Port of San Francisco Language Access Liaison:
 - Matthias Giezendanner, Business Services Supervisor
 - Email: Matthias.Giezendanner@sfport.com
 - Telepono: (415) 274-0471

ACCESSIBLE MEETING INFORMATION

Accessible meeting information policy: In order to assist the City's efforts to accommodate persons with severe allergies, environmental illness, multiple chemical sensitivity or related disabilities, attendees at public meetings are reminded that other attendees may be sensitive to various chemical based products. Please help the City to accommodate these individuals. A sign language interpreter and alternative format copies of meeting agendas and other materials can be provided upon request made at least 72 hours in advance of any scheduled meeting. Contact Wendy Proctor, Port's ADA Coordinator, at 274-0592. The Port's TTY number is (415) 274-0587.