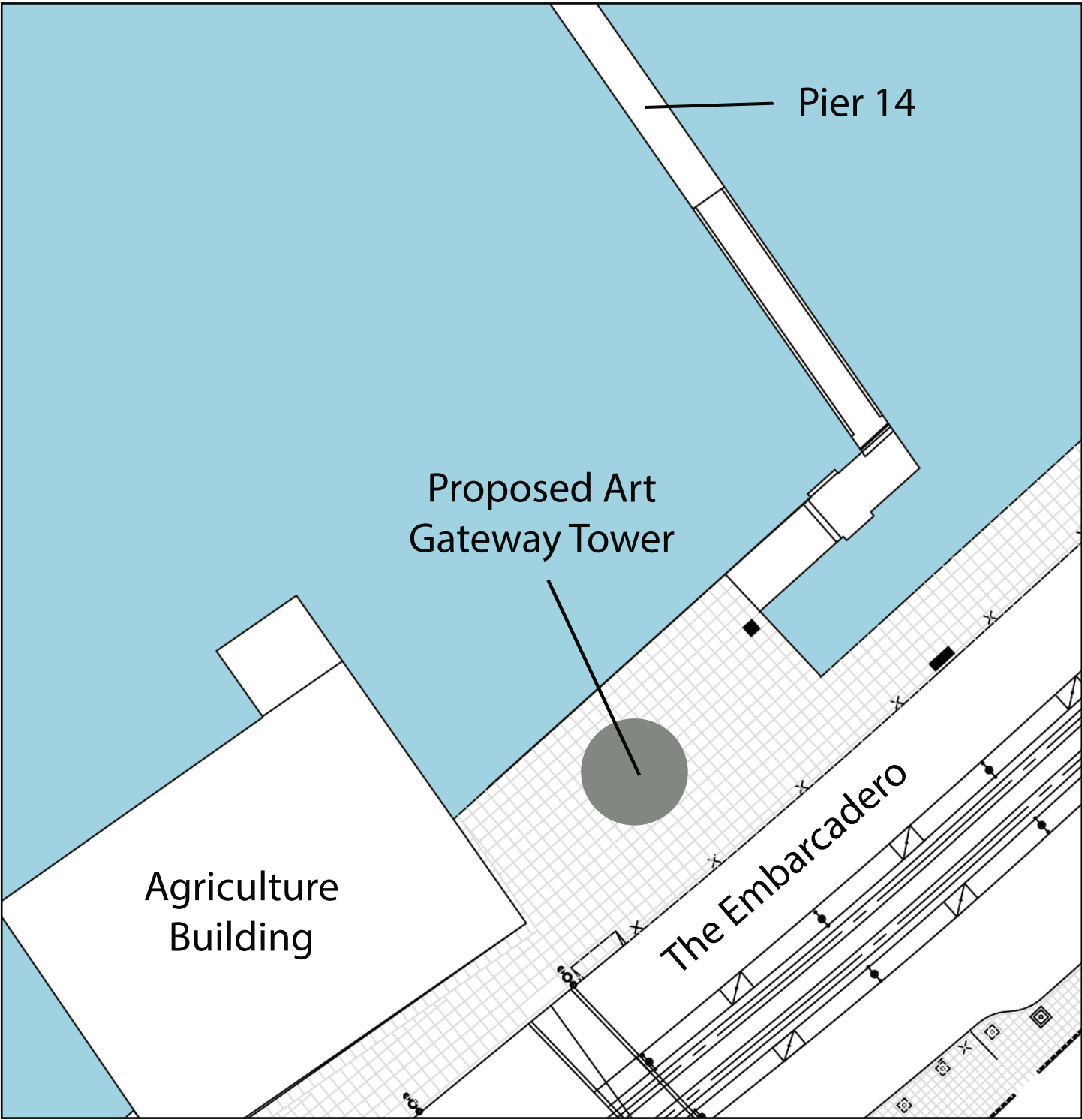


# Attachment A - Site Plan



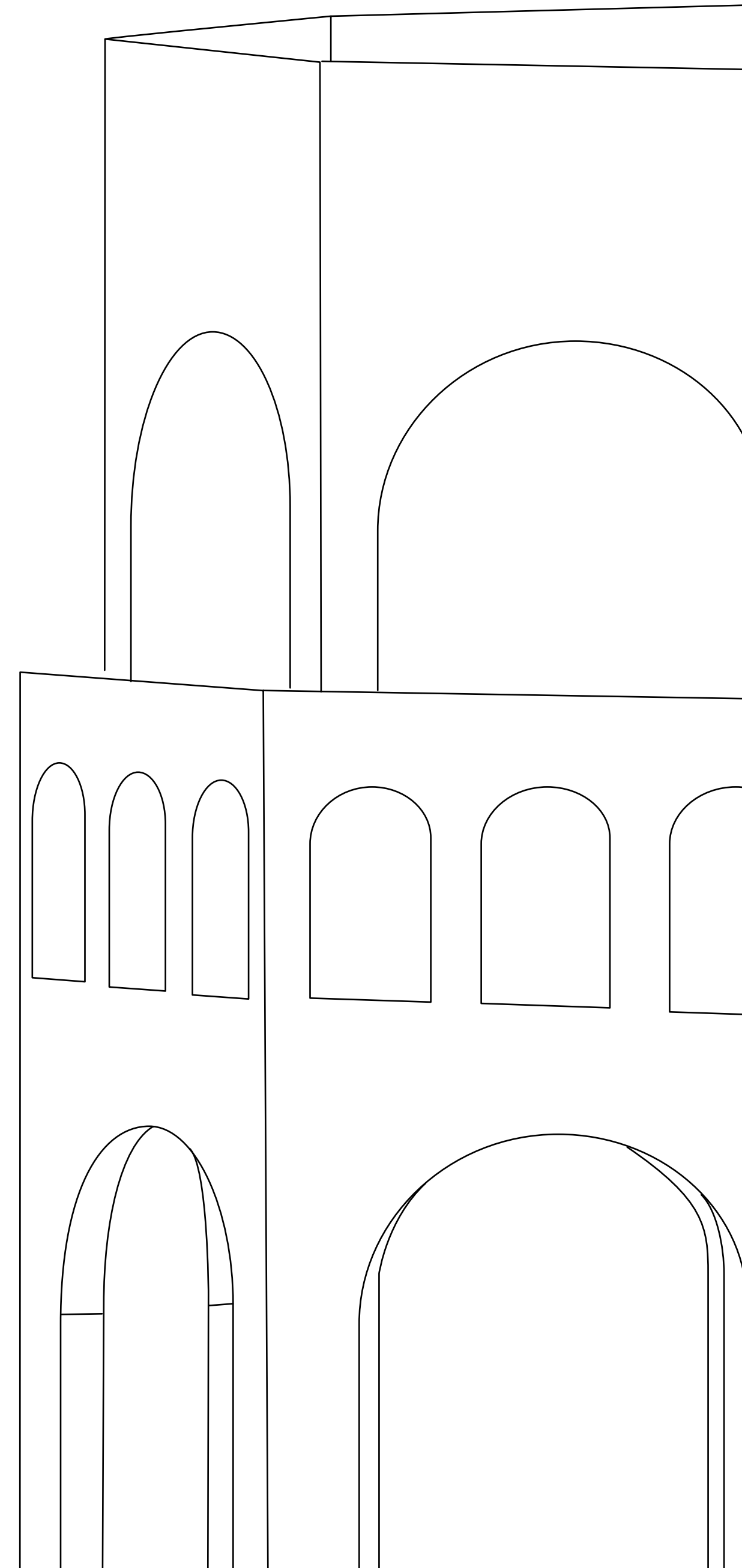
## Attachment B - Artist's Proposal

Lorem ipsum

# The Gateway Tower

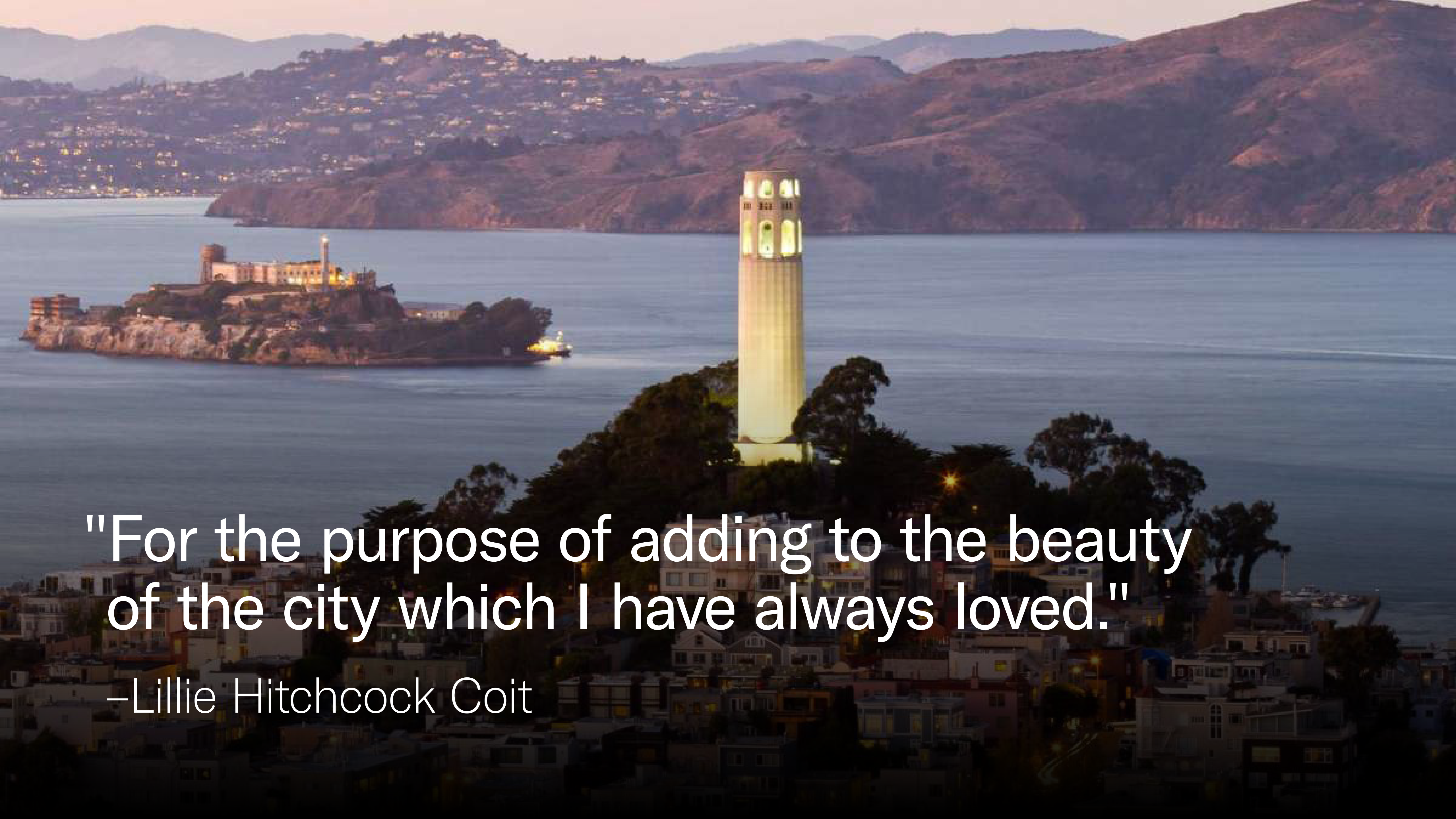
# An Engineered Artworks Installation

We are Designers, Fabricators, Engineers and Artists



## PHYSICAL DESCRIPTION

The **Gateway Tower** is a 30 ft. tall reinterpretation of the infamous Coit Tower – an immersive experience exploring where this city came from, where we are and where are we going. This reimaged structure is made of reclaimed wooden front doors from residences throughout San Francisco's diverse neighborhoods.



"For the purpose of adding to the beauty  
of the city which I have always loved."

–Lillie Hitchcock Coit

LEAD ARTIST & ENGINEERED ARTWORKS FOUNDER

**Sean Orlando** is a multi-disciplinary installation artist, museum professional, and community organizer with an interest in collaborative and immersionary large-scale sculptural installation projects. Sean has exhibited at, and collaborated with, many arts organizations and venues throughout California including The Crucible, the Chabot Space and Science Center, Maker Faire, Landor and Associates, the American Welding Society, The Port of San Francisco, Coachella, Dorkbots, Burning Man, the Worth Ryder Gallery, Warehouse 416, the Smithsonian, the Exploratorium, and more. Sean Orlando has been supporting and creating Public Art in the Bay Area for over two decades.

## PHILOSOPHICAL STATEMENT

The **Gateway Tower** project is a celebration of the diversity at the heart of this city that we love. It is modern day beacon of beauty – a gift from the hearts and minds of the creative class. It is a call to reimagine San Francisco's beauty as not just physical, but emotional – a shared understanding of inclusion.

## PHILOSOPHICAL STATEMENT

So many artists are being forced to leave San Francisco – a creative class that has been a cultural foundation for many generations. As these artists sail away we must honor their decades of service in shaping our city's identity.

## GATEWAY TOWER

### Overview

The architecture of the tower is inspired by West Coast Art Deco and built from doors that are uniquely San Francisco with an overall multi-color gradient that moves from the base to the top transitioning from cool to warm hues.

### Dimensions

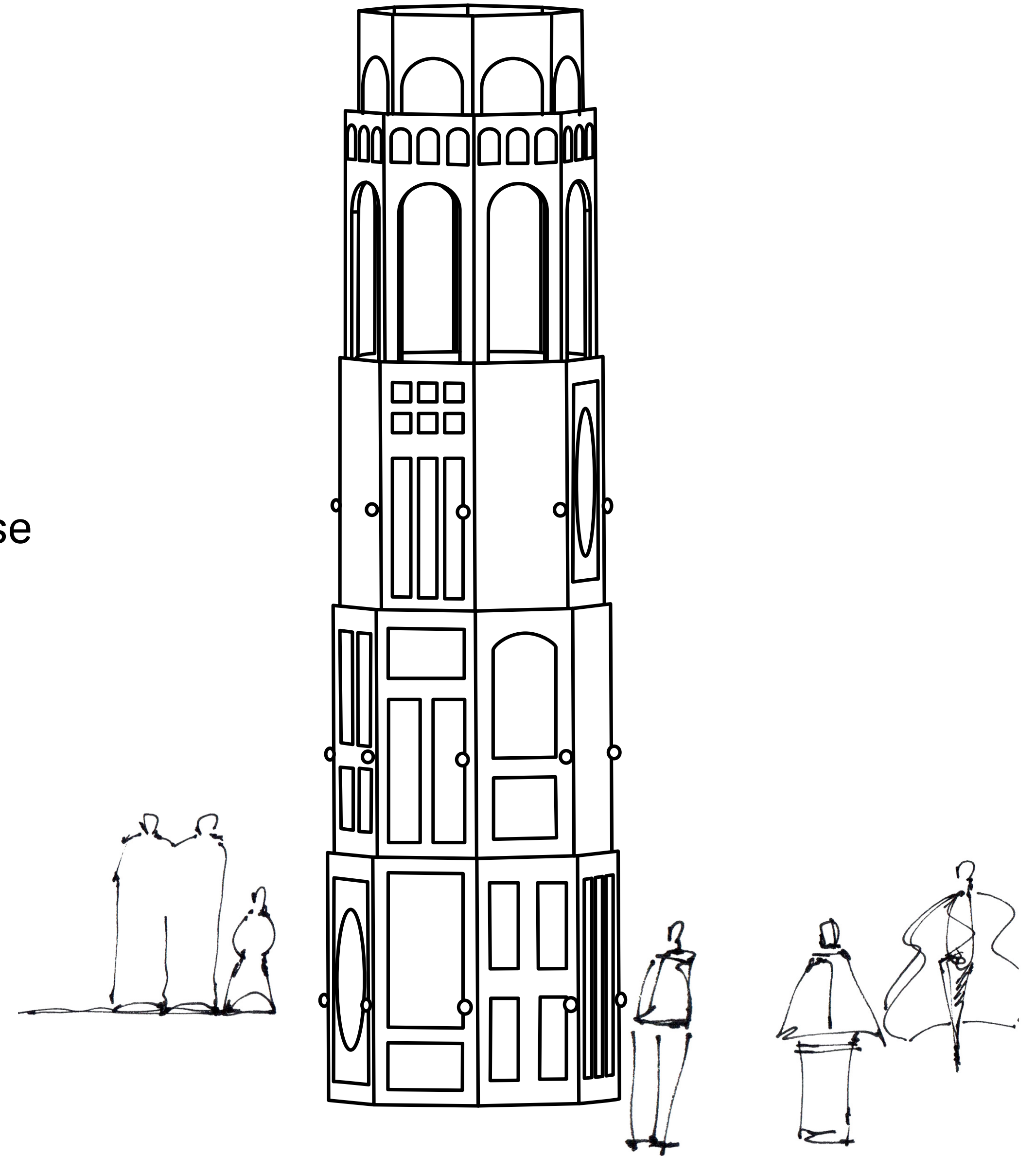
30' Tall x 8' wide

Base and Lenticular plinth: 25' diameter

Direct anchoring would not require a base

### Materials

Steel, Wood, Polycarbonate, Decorative Painting, Peep-holes





## DIVERSE DOORS

The reclaimed front doors will be representing the diverse range of the many historic architectural styles that are found throughout San Francisco neighborhoods. Styles will be but not limited to Queen Ann, Victorian Era, Art Deco, Art Nouveau, Craftsman, Amish and/or Shaker.

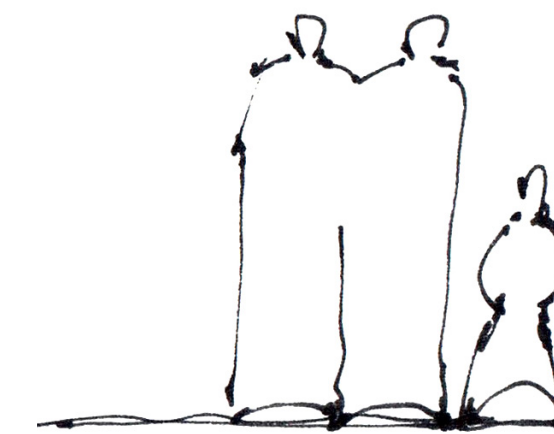
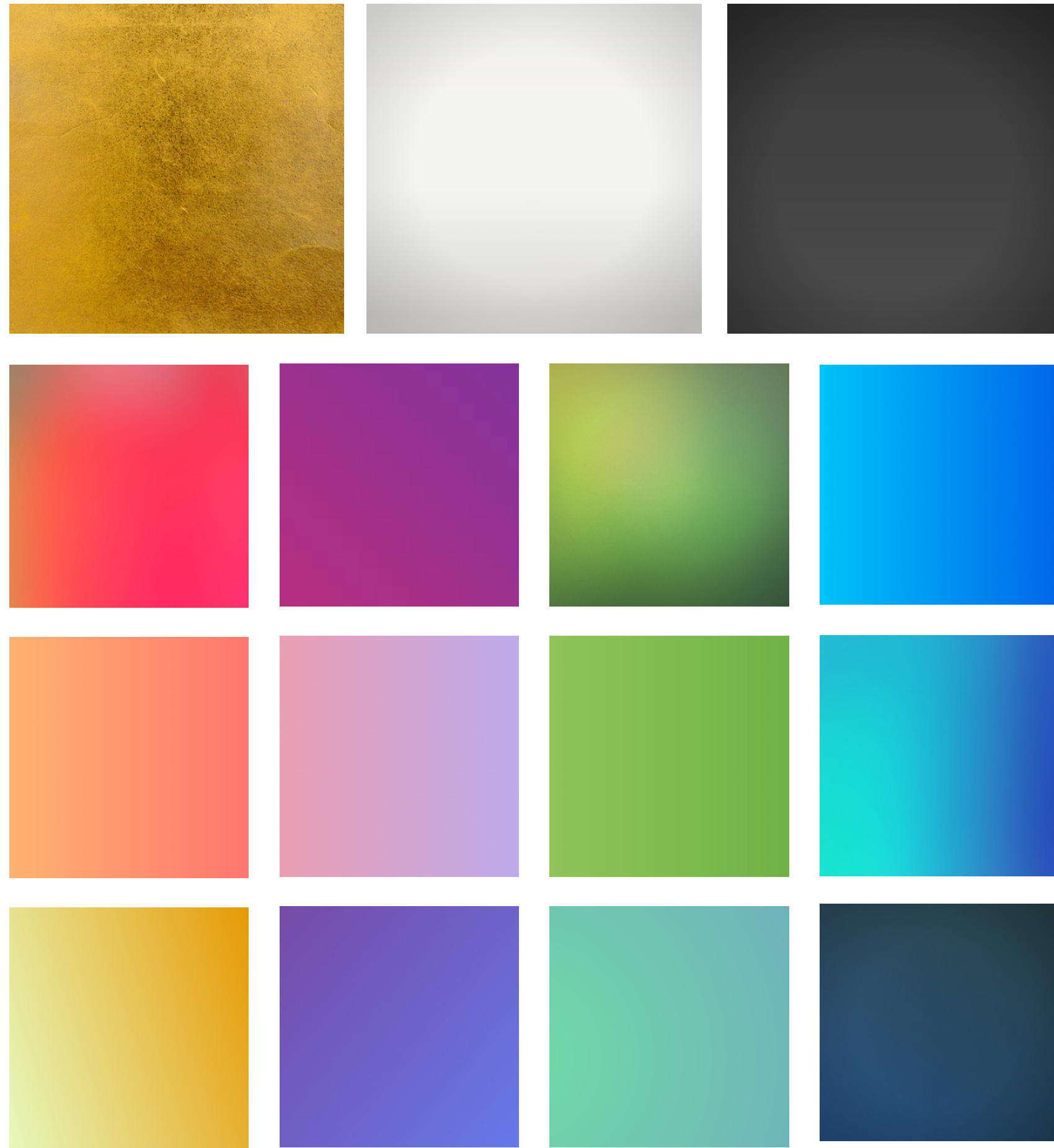


## DECORATIVE PAINTING

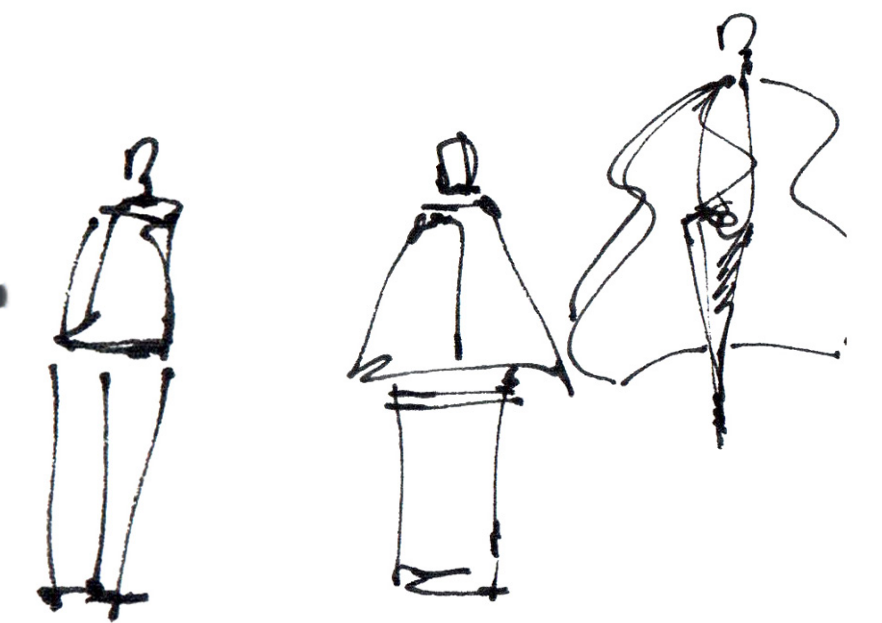
We have partnered with **Tania Seabock**, a world renowned decorative painter and architectural gilder to paint the doors of the exterior structure.



# COLOR INSPIRATION



Rendering for general overview. Color details subject to change.



## PUBLIC BENEFIT

This project is employing local steel workers, fabricators, welders, carpenters, gilders, painters, and curious minds who believe in art as a way of life.

The Gateway Tower comes with a structural “wet stamp” and is available for temporary installation.

## EXPERIENCE - OVERVIEW

The placement of the art piece along the water's edge is a play on the observation tower by inviting the general public to look inward versus outward onto the horizon. Though the piece will be just as visually engaging from a distance as it will be up close and personal.

## EXPERIENCE - UP CLOSE

At the lower level, the tower is adorned with inverted, fish-eye peepholes that invite onlookers to gaze into the inner world of past, present, future. This octagon representation of kaleidoscopic memory is set with eight unique doors paired with eight individual local artists. Engineered Artworks, in collaboration with the Five Ton Crane Arts Collective, will develop eight microcosm 3D shadow-boxes – immersive interior environments that will inspire and explore the themes of *discovery, reflection, and inspired action.*



# Thank you

**The Gateway Tower**

An Engineered Artworks Installation

© 2019 Engineered Artworks

