



# Pasha Automotive Services

## Overview San Francisco Pier 80





## Pasha History



- **3<sup>rd</sup> generation family owned business; in operation since 1947**
- **Multidivisional**
  - Pasha Automotive Services
  - Pasha Stevedoring & Terminals
  - Pasha Hawaii
  - Pasha Distribution Services
  - SeaLogix



## The Logical Choice Bay Area Auto Port



**Closest Auto Port to Ocean Pilot** = reduced Steamship transit

- FPOR adjacent to all berths, reduced stevedoring costs



**Closest to Dealer Market** = Reduced Inland Expense

- Adjacent to Major Freeways (HWY 101 & 280) for easy access into San Francisco and out to regional Bay Area locations
- New investment in paving, striping and Auto Processing Infrastructure for efficient, quality, high volume production





## Marquis Location and Facility; Low Cost of Entry



### 70 Paved Acres: Capacity, Capacity, Capacity

- 170K and 224K sq. ft. Clear Span Processing Warehouses for Wash, Assembly, Repair, Quality Inspection Services and luxury vehicle storage.
- Available space for dedicated, “build to suit operations”
- Secure, Paved, lit, fenced to Homeland Security Specs
- Former home to Oracle’s America’s Cup Headquarters handling multi billion dollar racing operations



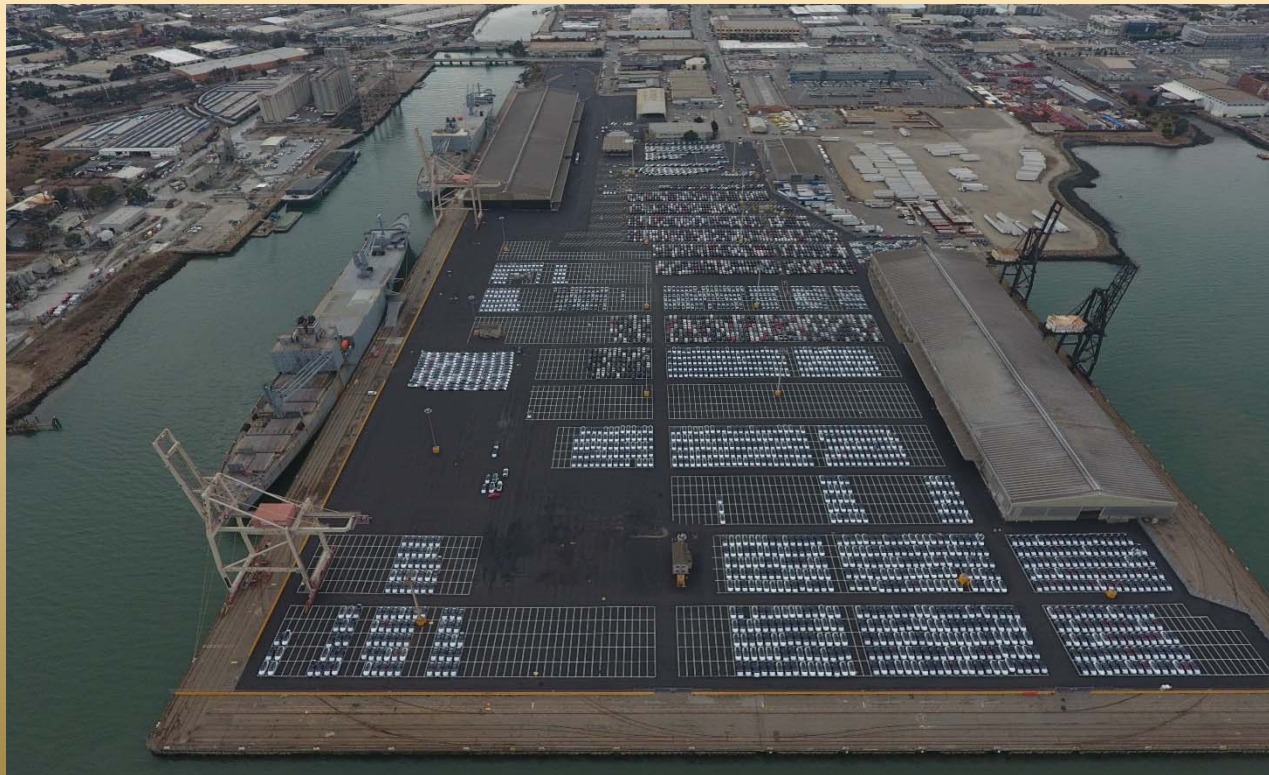
## Marquis Location; FAST Vessel Access

- Closest Bay Area port to San Francisco Harbor Pilot Station.
- Fast ingress/egress to and from POSF.
- The only RO/RO terminal located within the City of San Francisco.



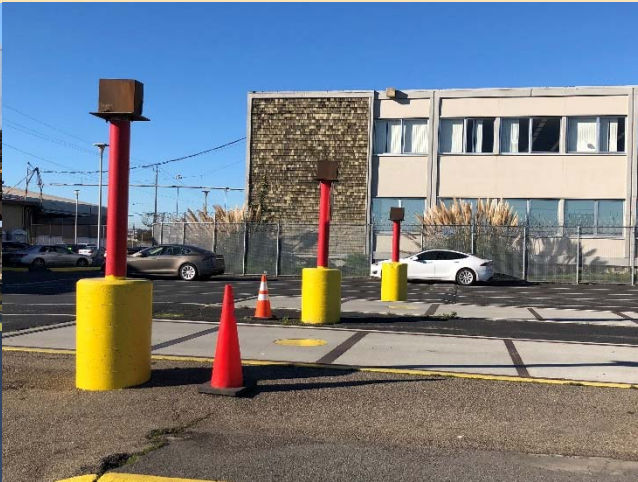


# Deep Water Berths



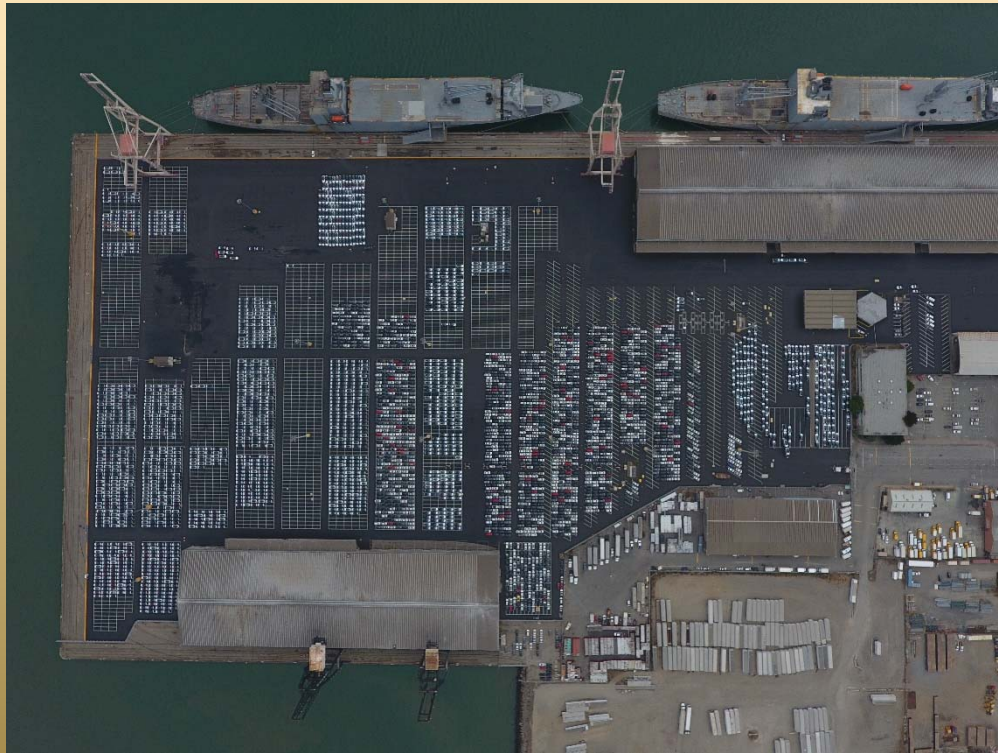


## Cosmetic Improvements

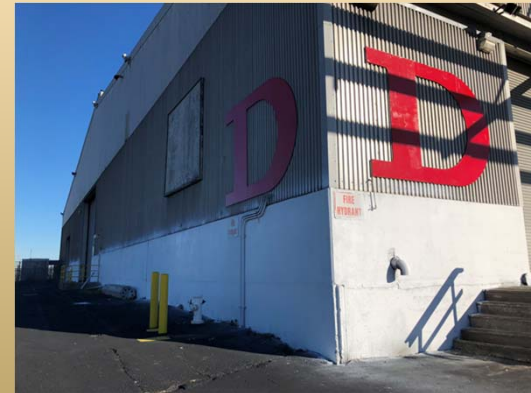




## Free Span On Dock Warehouse



224,000 Sq ft Free Span On Dock Warehouse – “Shed A”



160,000 Sqft Free Span, On Dock Warehouse – “Shed D”





## Immediate Highway Access



- Easy Access to highways 101 and I-280
- Overweight Truck Corridor on all streets accessing the terminal.



## Summary



### Strategically located with unmatched capacity

- Superior access to Highways
  - Fewer truck miles for Bay Area markets vs Benicia or Richmond
- 70+ acres, 9 acres under cover
- Fresh facility investments

