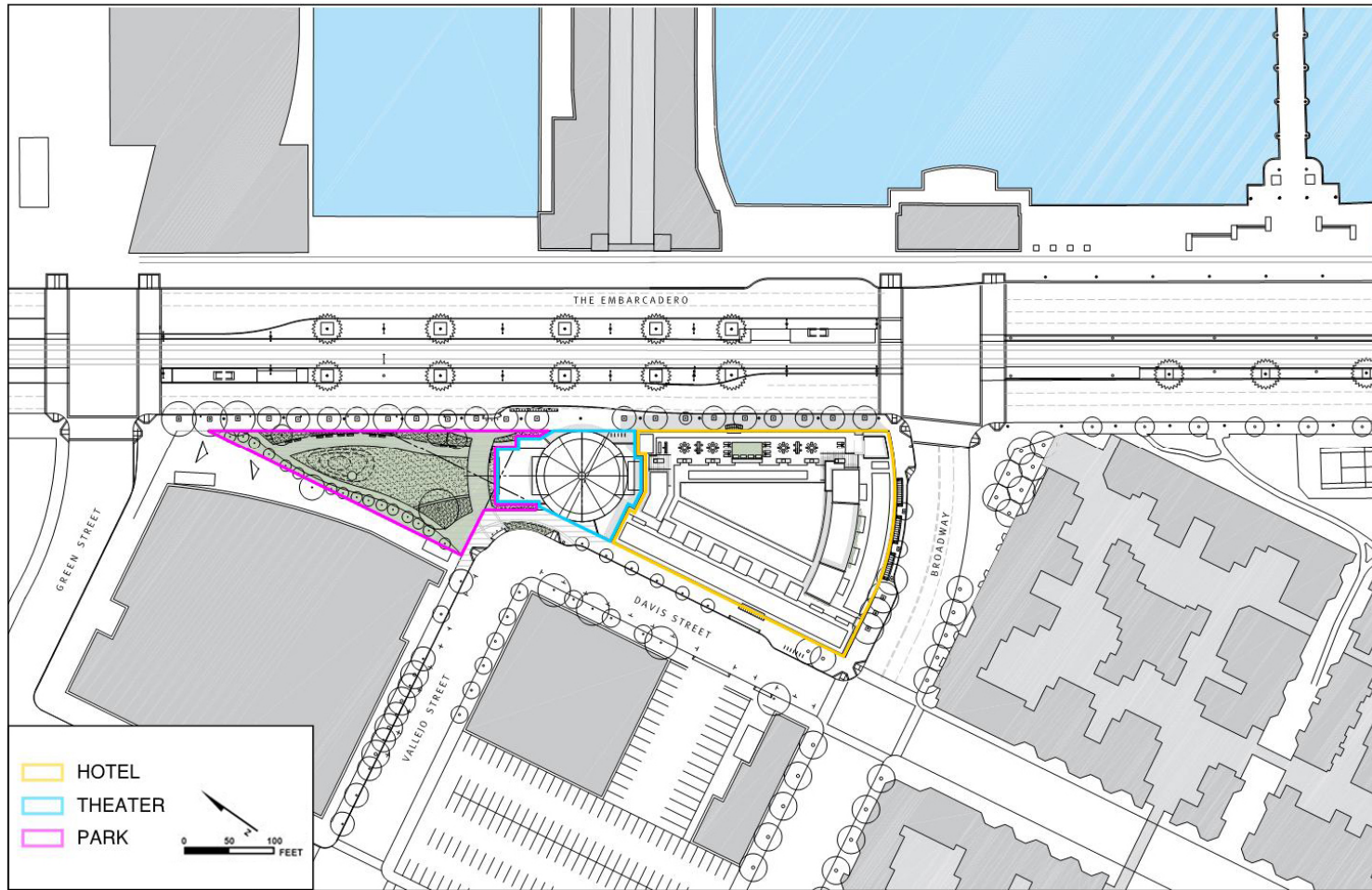


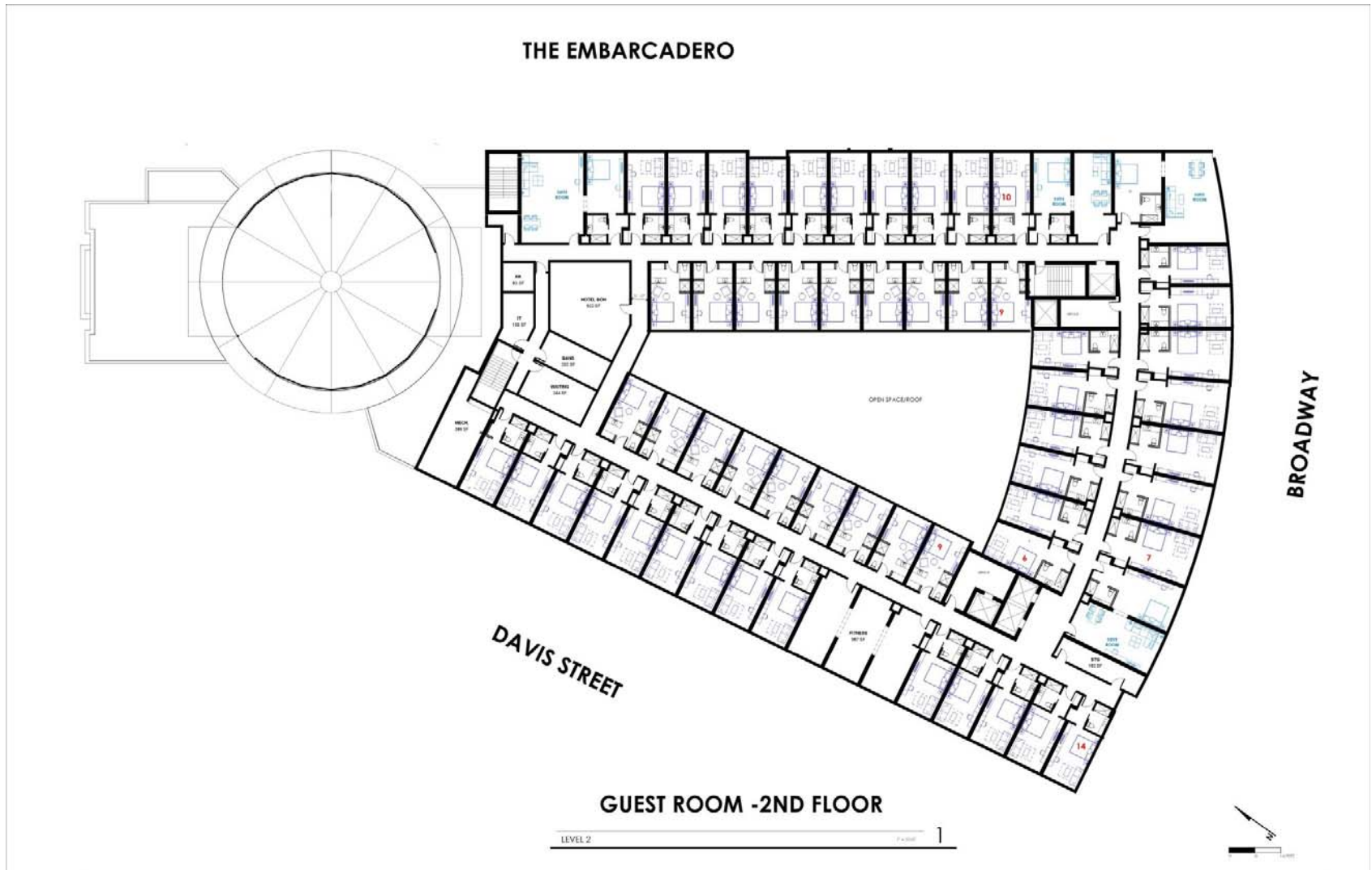
Exhibit "B,"  
Proposed Project Drawings



**PROPOSED SITE PLAN**

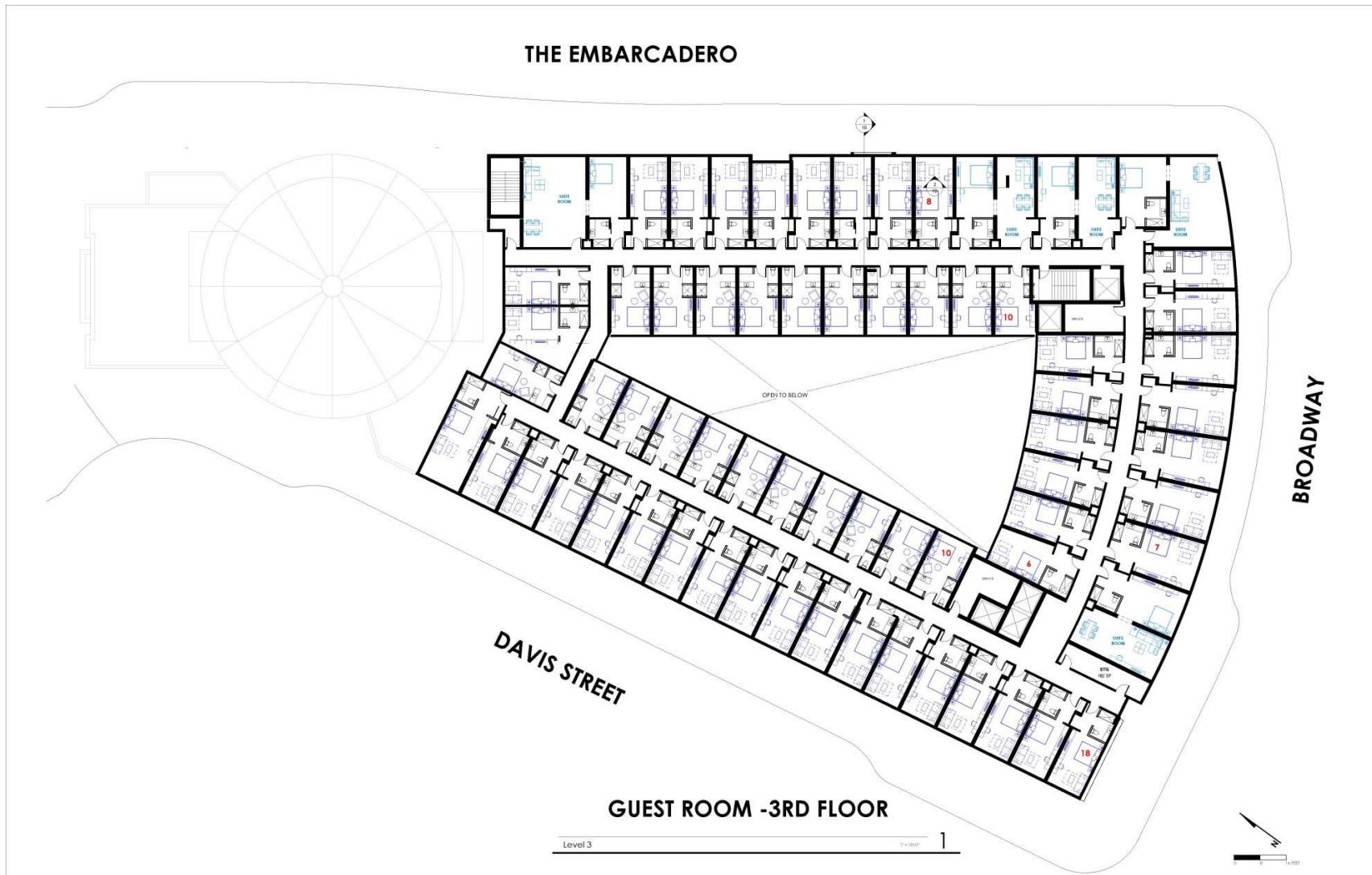
Source: Hornberger + Worstell Architects and HRGA Architecture, 2018





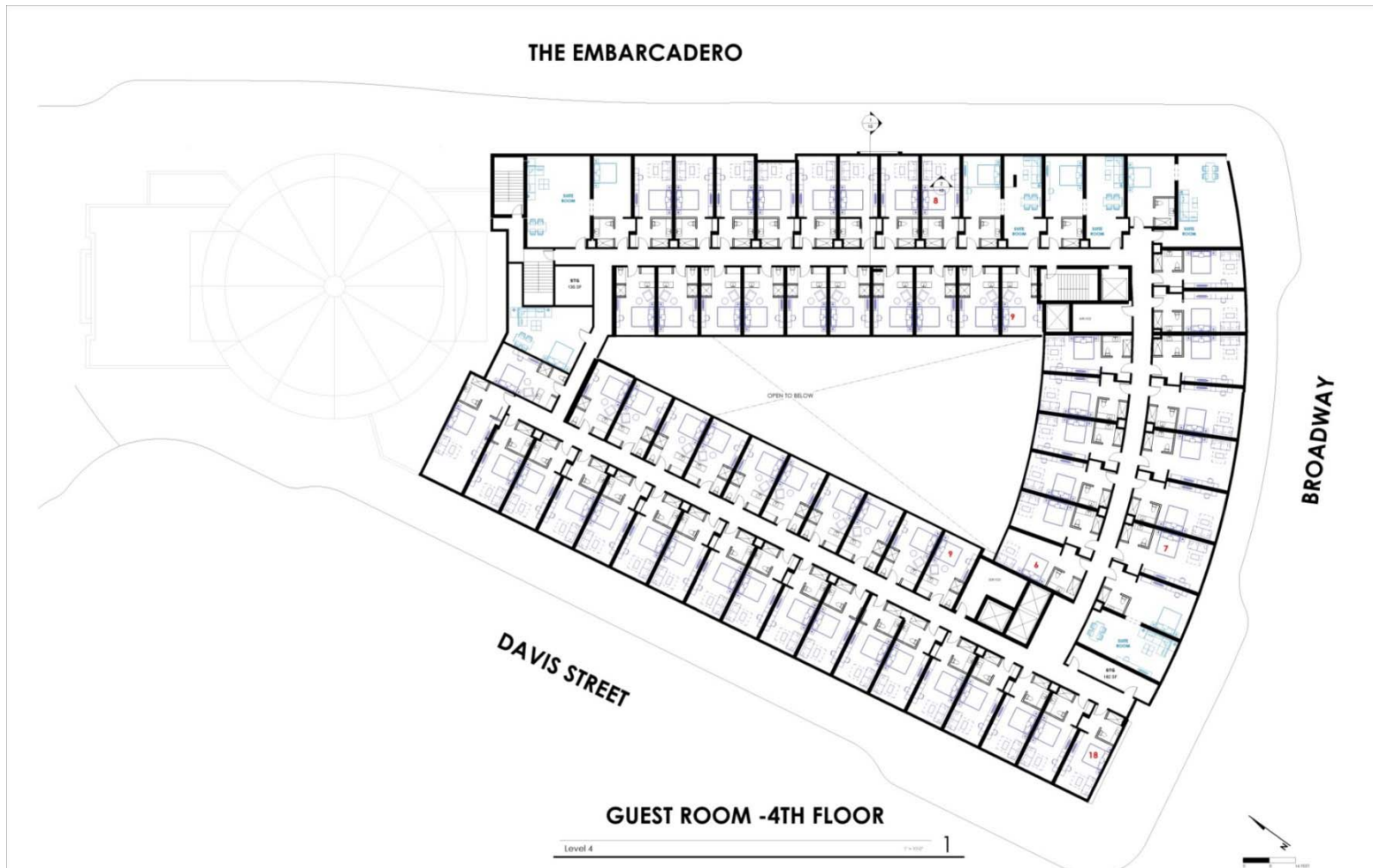
**Proposed Second-Floor Plan**

Source: Hornberger + Worstell Architects and HRGA Architecture, 2018



**Proposed Third-Floor Plan**

Source: Hornberger + Worstell Architects and HRGA Architecture, 2018



### Proposed Fourth-Floor Plan

Source: Hornberger + Worstell Architects and HRGA Architecture, 2018





**Proposed Public Park Plan**

Source: Hornberger+Worstell Architects, 2018



## South View of Proposed Project

Source: Hornberger+Worstell Architects and HRGA Architecture, 2018





Broadway



The Embarcadero

Building Elevations









November 1, 2017 | 18

Source: Hornberger+Worstell Architects and HRGA Architecture, 2018



Park



Davis Street

Building Elevations

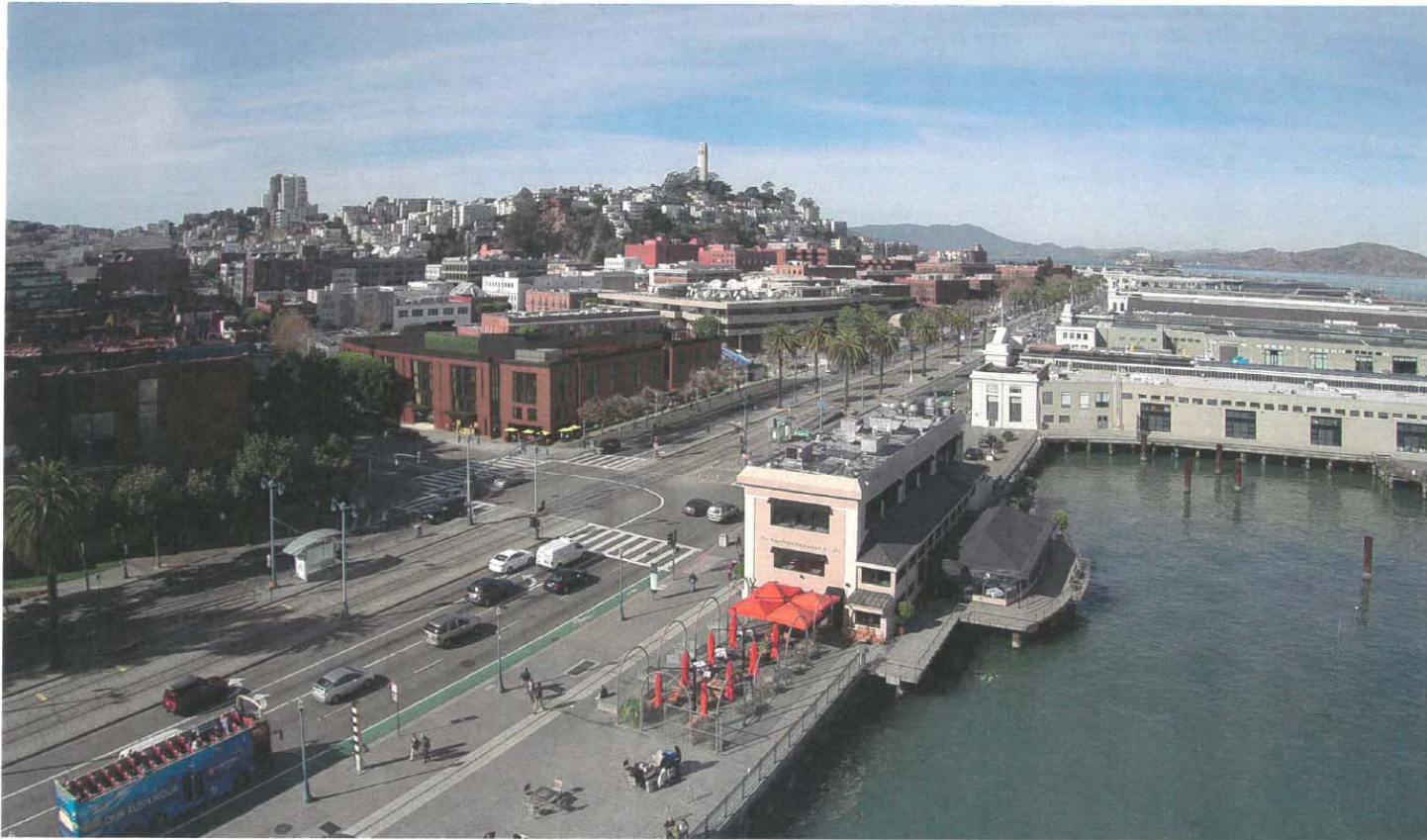
 	<p>ZinZanni / Kenwood - The Theater &amp; Hotel @ Broadway   San Francisco, California          A Teatro ZinZanni &amp; Kenwood Investments Project</p>	<p style="font-size: small;">November 1, 2017   17</p> 
--	---	--

Source: Hornberger+Worstell Architects and HRGA Architecture, 2018



### **Northwest View of Proposed Project**

Source: Hornberger+Worstell Architects, 2018



Aerial View

**Teatro ZinZanni**  
KENWOOD INVESTMENTS

**ZinZanni / Kenwood - The Theater & Hotel @ Broadway | San Francisco, California**  
A Teatro ZinZanni & Kenwood Investments Project

**Hornberger + Worstell Architects**  
All drawings and text are copyright property of Hornberger + Worstell Architects, Inc. All rights reserved. No part of this document may be reproduced without the written consent of Hornberger + Worstell Architects, Inc.

November 1, 2017 | 26

**Hornberger**  
+  
**Worstell**

Source: Hornberger+Worstell Architects, 2018