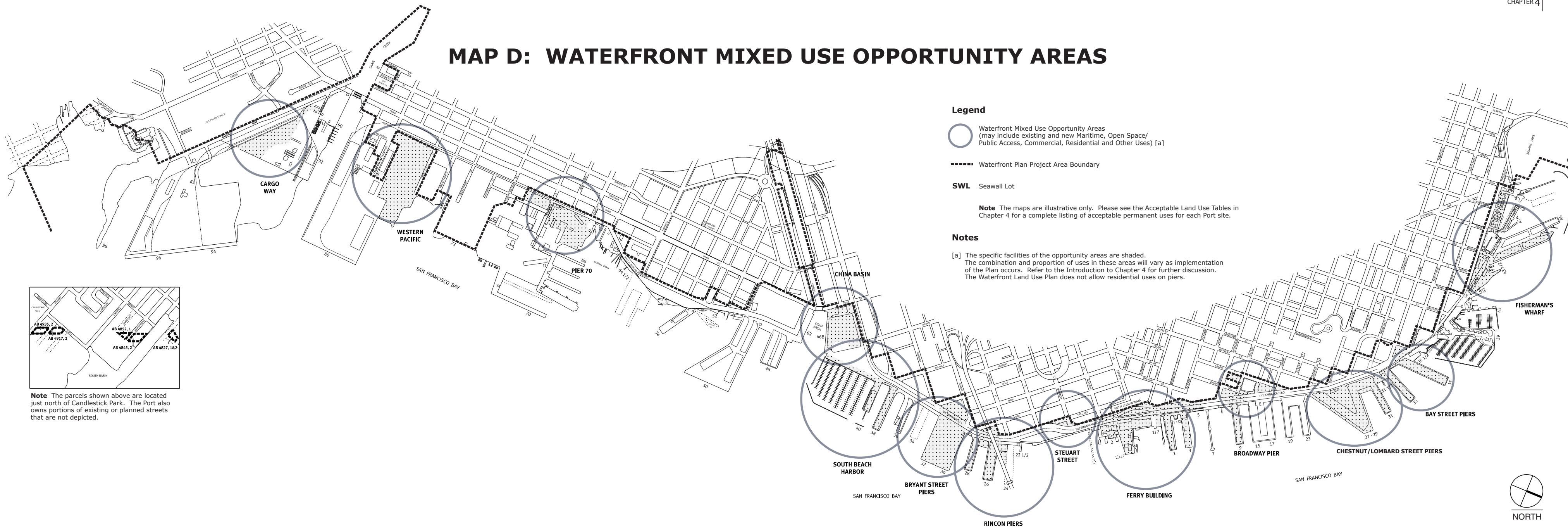




# MAP D: WATERFRONT MIXED USE OPPORTUNITY AREAS



### Legend

 Waterfront Mixed Use Opportunity Areas (may include existing and new Maritime, Open Space/ Public Access, Commercial, Residential and Other Uses) [a]

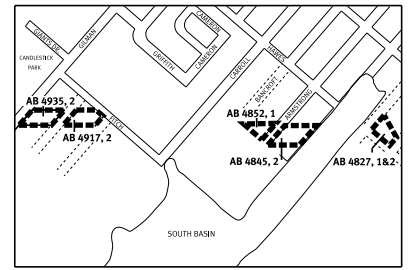
 Waterfront Plan Project Area Boundary

**SWL** Seawall Lot

**Note** The maps are illustrative only. Please see the Acceptable Land Use Tables in Chapter 4 for a complete listing of acceptable permanent uses for each Port site.

### Notes

[a] The specific facilities of the opportunity areas are shaded. The combination and proportion of uses in these areas will vary as implementation of the Plan occurs. Refer to the Introduction to Chapter 4 for further discussion. The Waterfront Land Use Plan does not allow residential uses on piers.



**Note** The parcels shown above are located just north of Candlestick Park. The Port also owns portions of existing or planned streets that are not depicted.

