

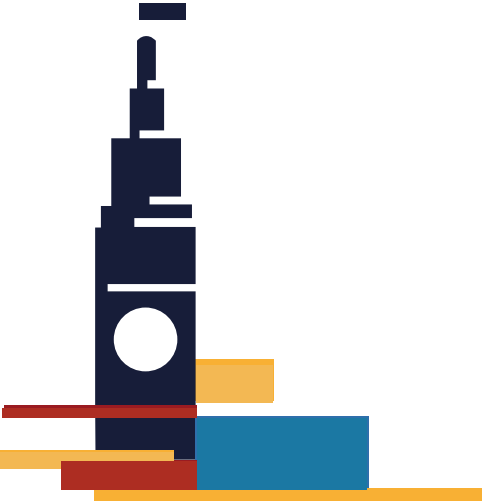
CRANE COVE PARK PLAYGROUNDS & DOG PARK

Tot Lot, Riggers Yard, Dog Run



April 24, 2024

Prepared By:
Erica Petersen
Project Manager



Background & Schedule

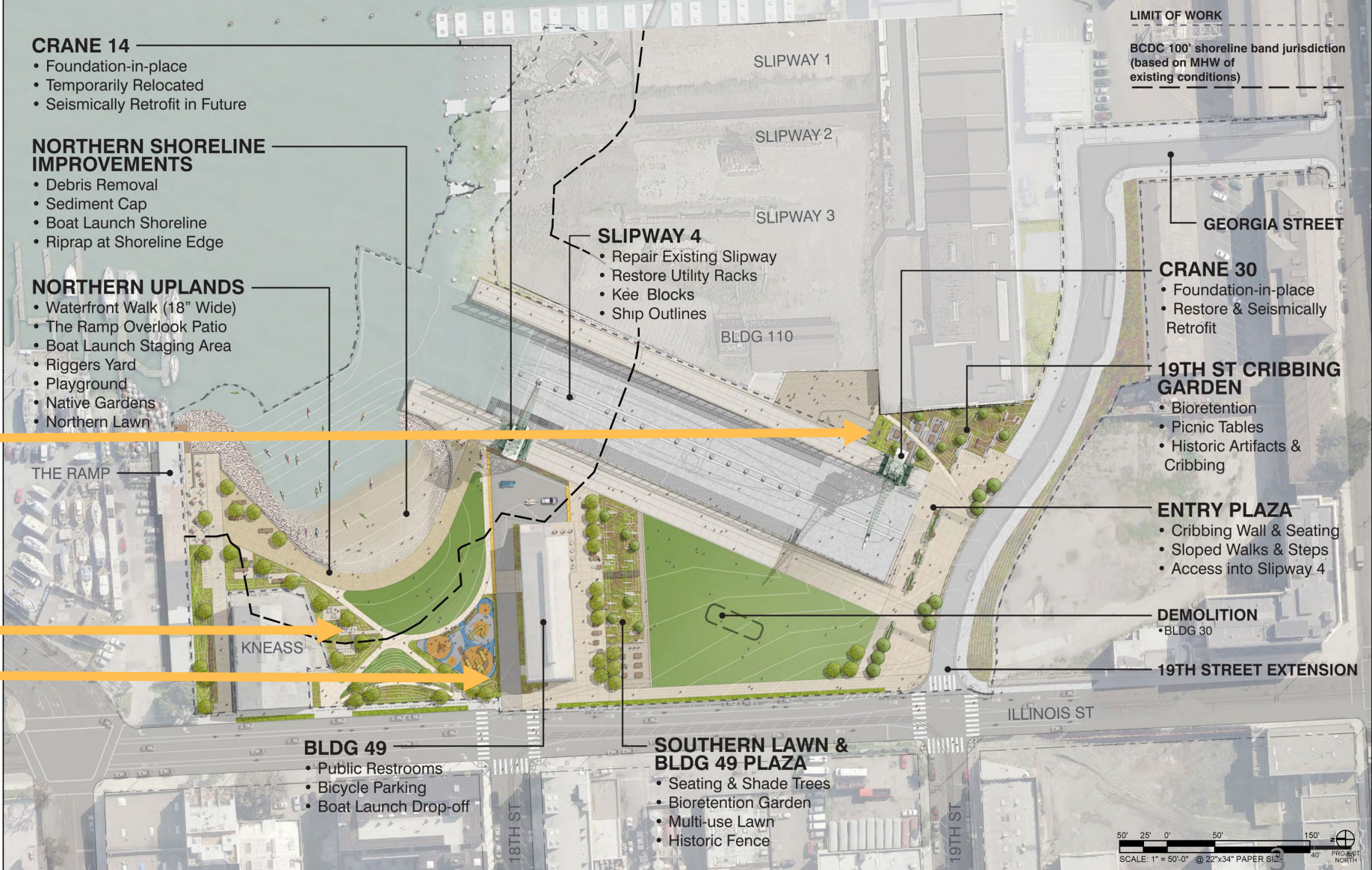
- Previously designed and went through the community process in 2011-2017
- Could not afford at the time
- New partnership with SF Parks Alliance to raise funds
- SFPA experience with playground development
- Schedule: Construction Dec 2024 – Sept 2025



2017 Final Park Master Plan

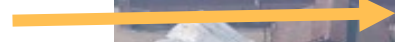
Dog Run

Riggers Yard
Tot Lot

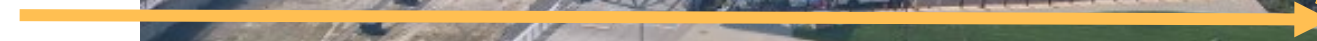


Feature Locations

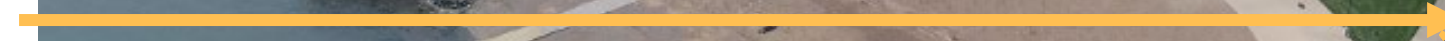
Dog Run



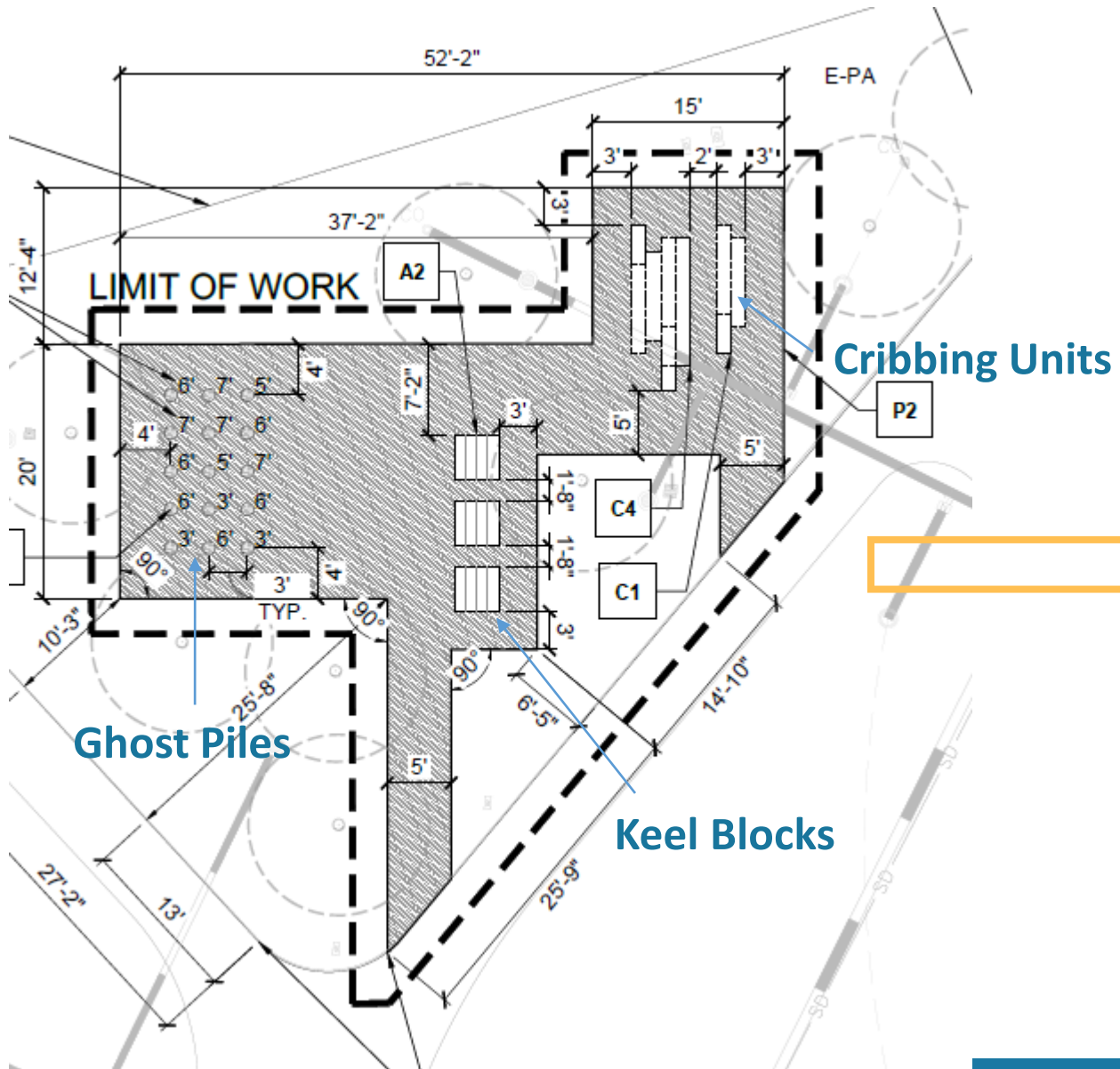
Tot Lot



Riggers Yard



Rigger's Yard



Rigger's Yard Continued

Ghost Piles



Keel Blocks



Cribbing Units



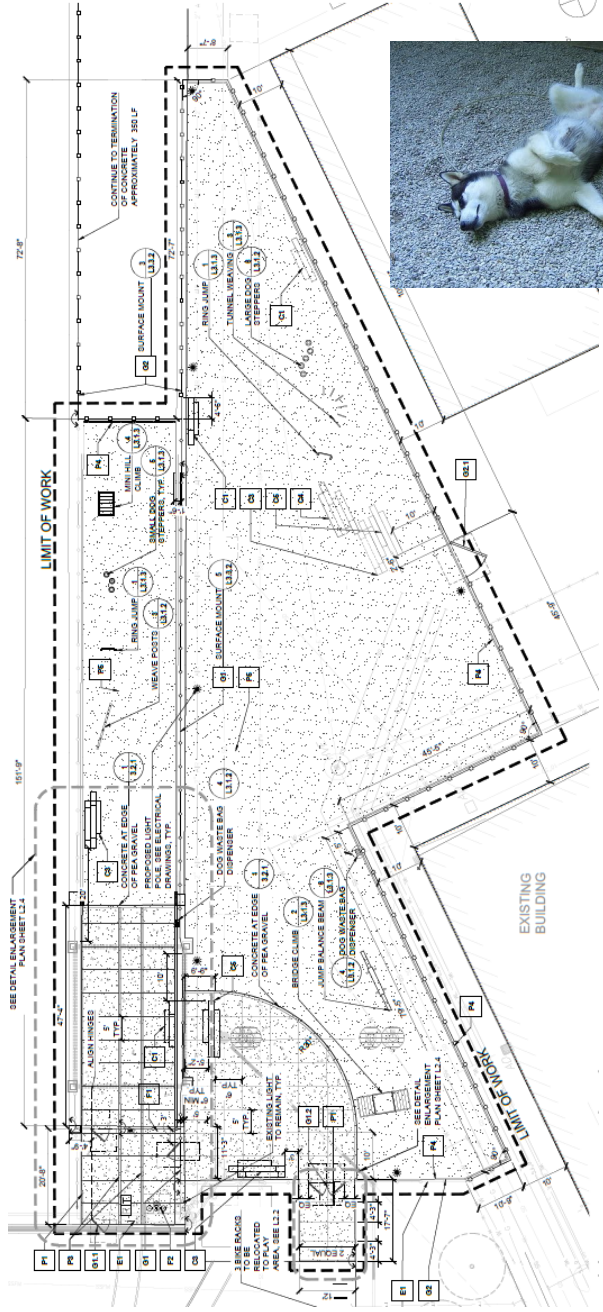
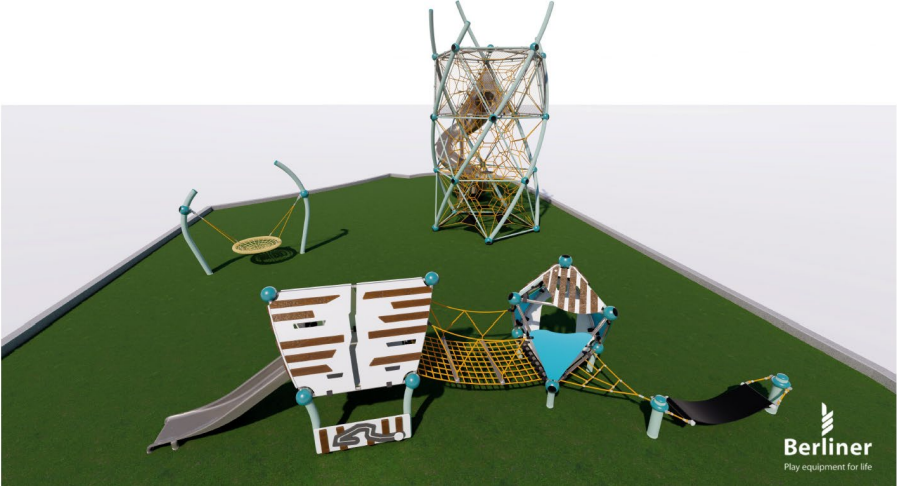
Tot Lot



Red Bridge School and Potrero Kids voting on playground



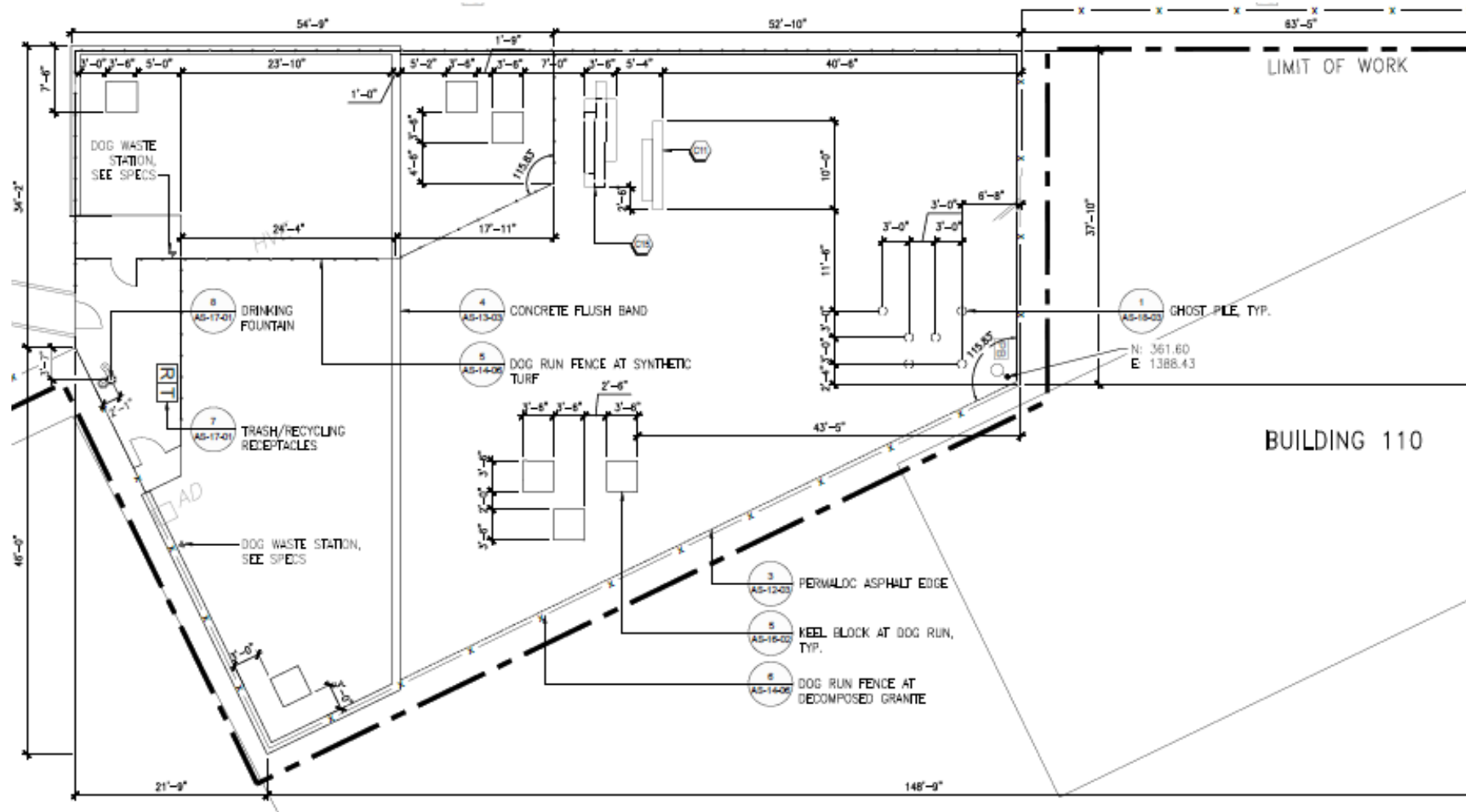
Questions? Thank You!



Supplemental Slides



PREVIOUS Design Dog Run



1 | DOG RUN ENLARGEMENT PLAN

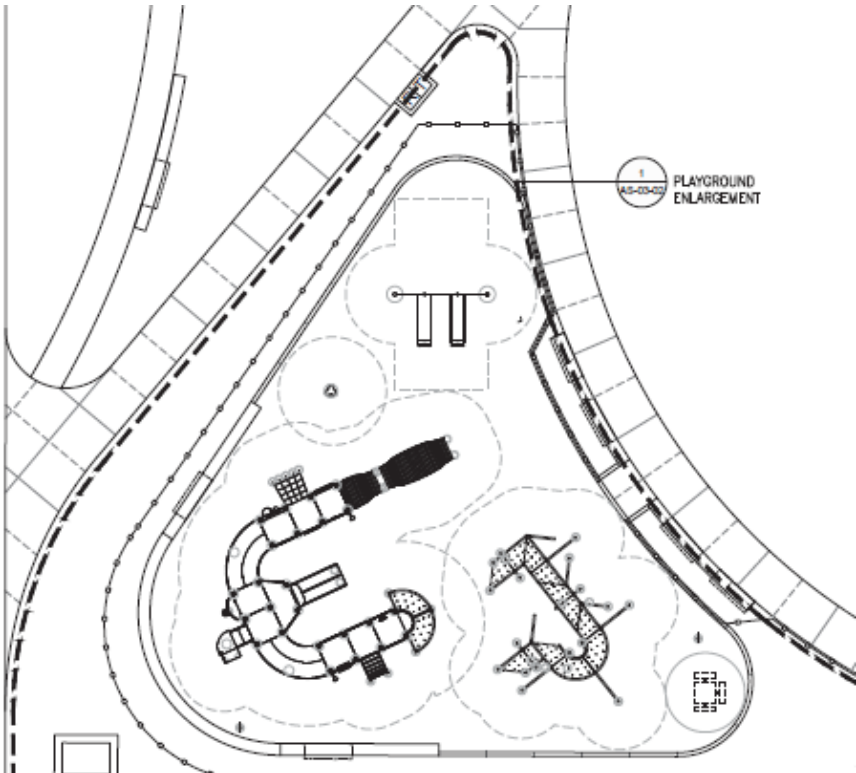
AS-03-06 REF.

SCALE: 1/8"=1'-0"



PREVIOUS DESIGN

Tot Lot



Excerpts from previous drawings:

