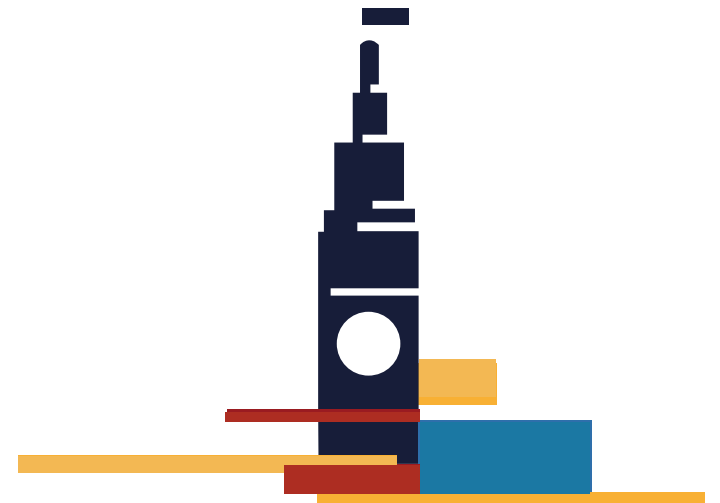


# BRANNAN STREET WHARF PARK OPPORTUNITY FOR RECREATION

Informational Presentation

March 20, 2024

Presented By: Catherine Hickey,  
Parks Services and Open Space Manager



# BACKGROUND

- Waterfront plan process identified desire to activate parks with new and more diverse offerings
- Have heard from volleyball community about demand
- Considering it as a pilot idea to test, if successful may include enhanced improvements

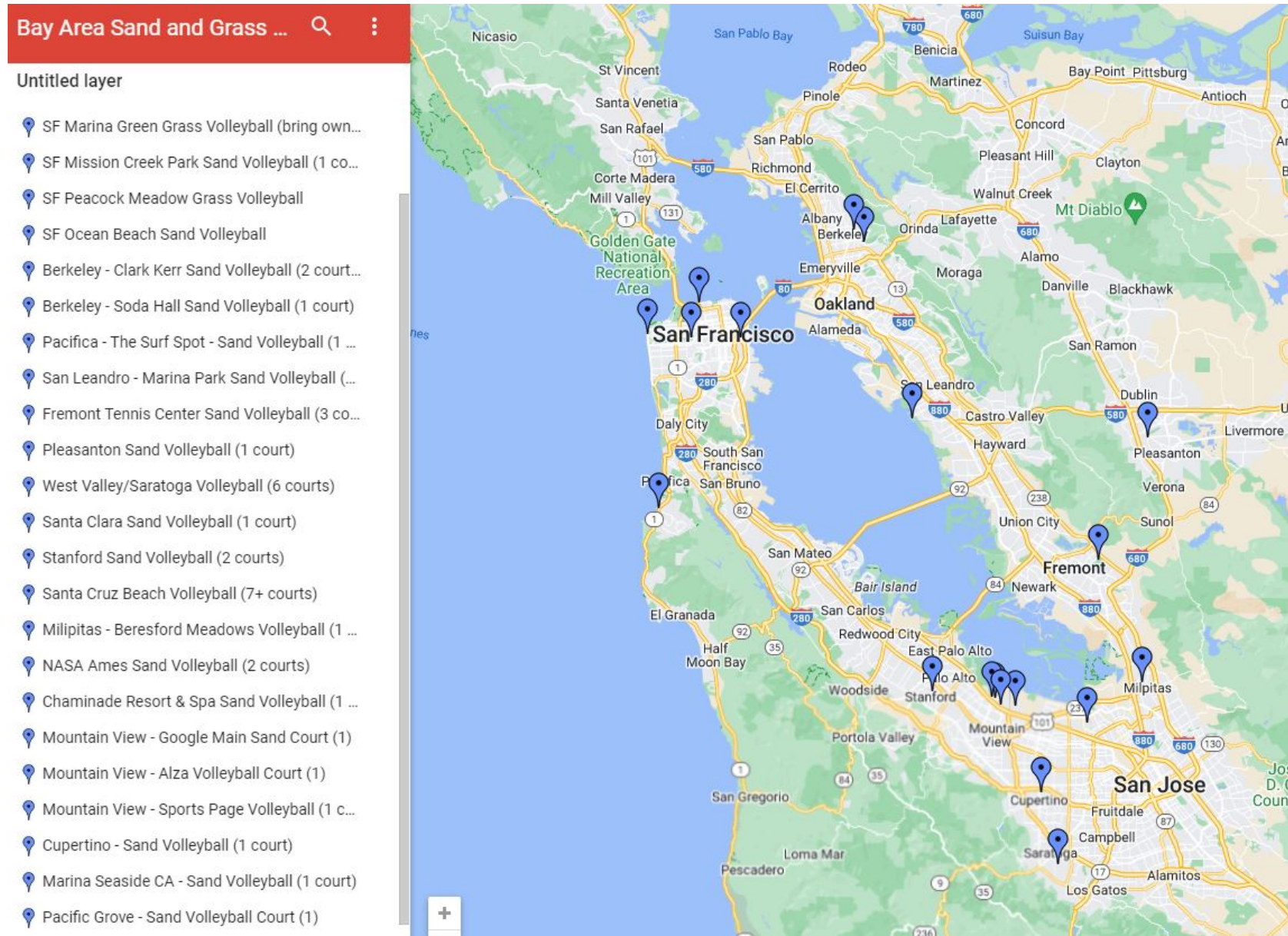


## Park Activation

8. Increase recreational uses, events, and programs in Port parks and open spaces that are appropriately sited and designed to serve a balance of local and state public trust needs as well as a full spectrum of users—locals, regional visitors, and people of all ages, abilities, races, and economic means.
  - a. Include interest points in public open spaces that attract use by youth and teens. Consider how technology and socialization patterns influence use and enjoyment of outdoor spaces by these groups.
  - b. Encourage art and gathering spaces that relate to characteristics of nearby neighborhoods.
  - c. Provide restrooms, drinking fountains, information kiosks, benches, tables, and other furnishings that enhance the public's enjoyment of the waterfront.
  - d. Try pilot programs to explore how recreational opportunities can be expanded or diversified. Learn from successfully programmed events that attract diverse populations to the waterfront, while mitigating impacts on affected neighborhoods.
  - e. Consider concessionaires that can support active enjoyment of Port parks (e.g., by providing recreation equipment, refreshments, and restrooms).

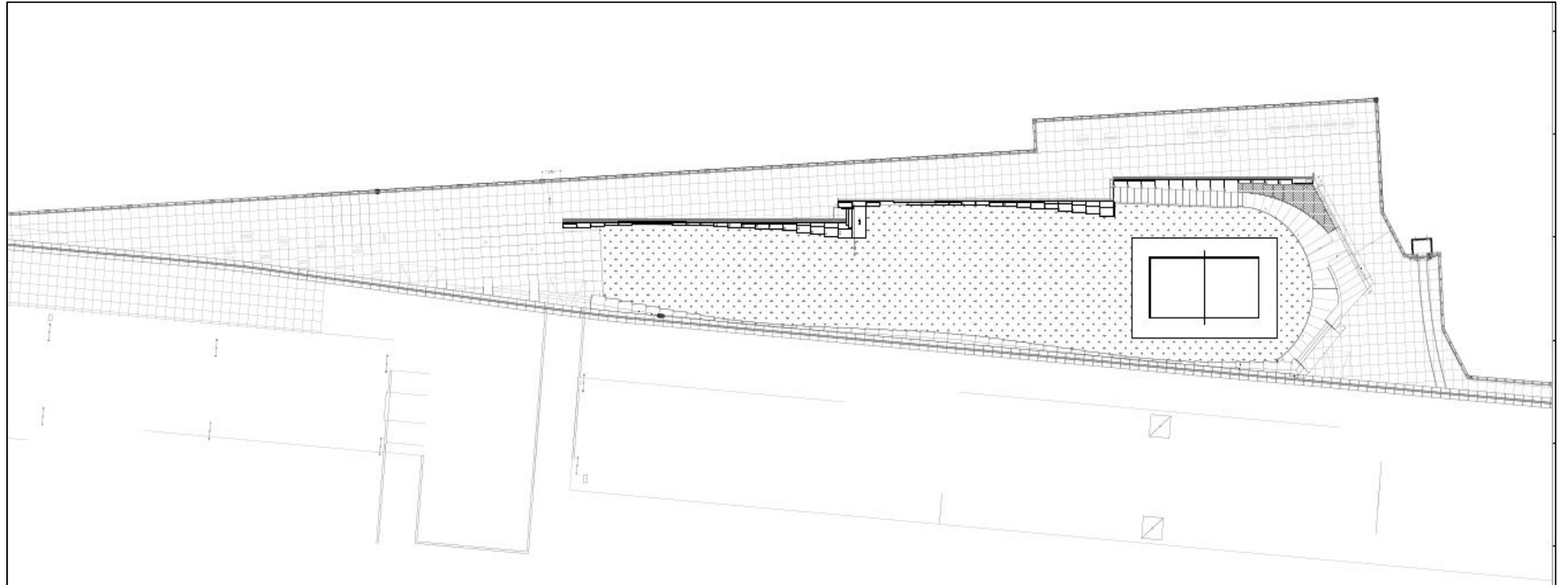
# PLACES TO PLAY VOLLEYBALL


- Activation of existing parks through recreation
- Large VB community with few places to play locally - 4 locations in SF and 2 in Berkeley – not enough courts to play
- Pilot Grass Volleyball courts at Brannan St Wharf Park
- VB community likes the central location



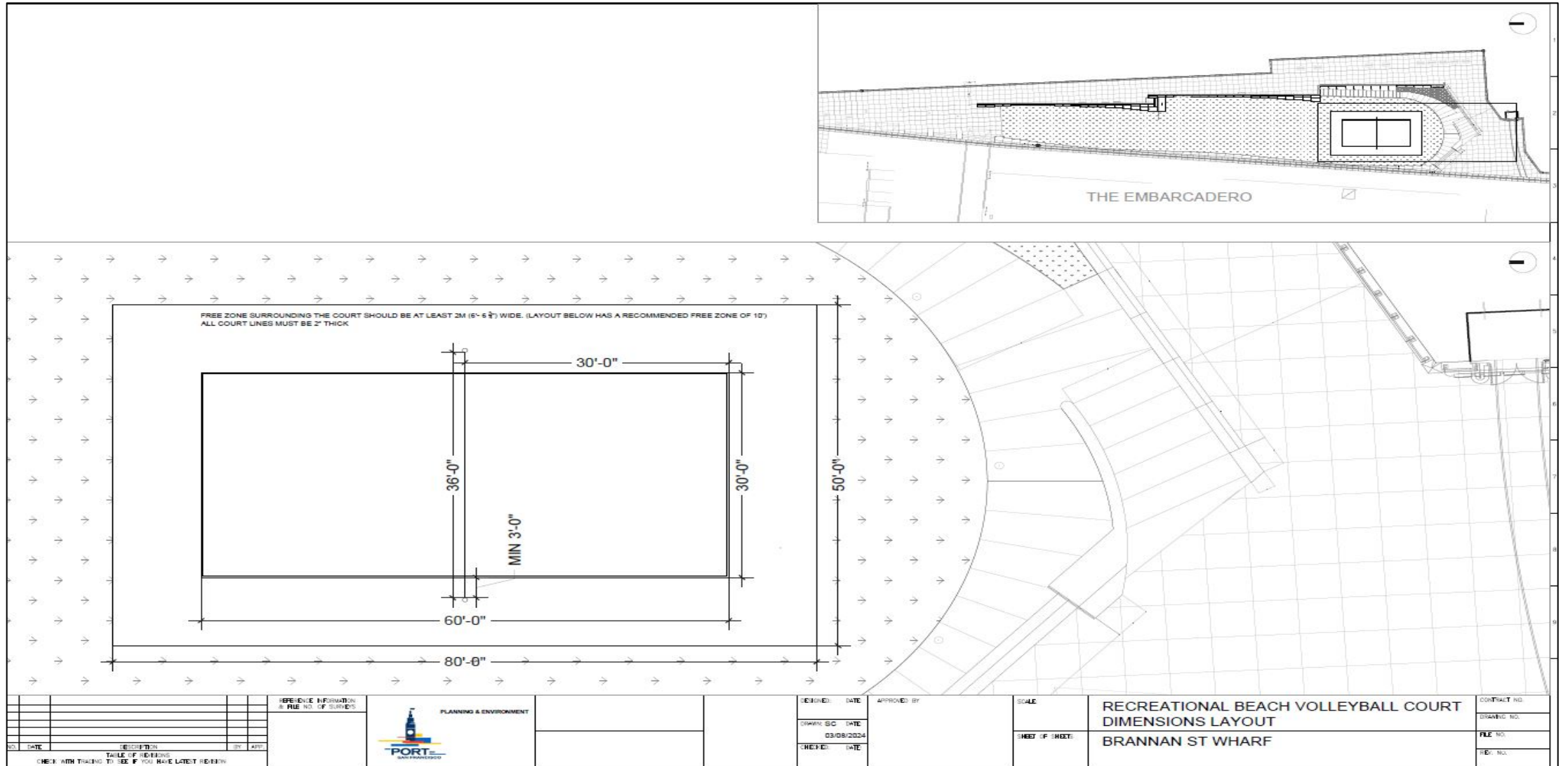


# COURT LOCATION: SINGLE COURT PARALLEL TO EMBARCADERO



		REFERENCE INFORMATION & FILE NO. OF SURVEYS				DESIGNED: DATE	APPROVED BY:	SCALE	RECREATIONAL BEACH VOLLEYBALL COURT LAYOUT	CONTRACT NO.
						DRAWN: SC DATE 03/08/2024				DRAWING NO.
NO.	DATE	DESCRIPTION	BY	APPD		REVISION: DATE		SHEET OF SHEET:	BRANNAN ST WHARF	FILE NO.
TABLE OF REVISIONS CHECK WITH TRACING TO SEE IF YOU HAVE LATEST REVISION										REV. NO.

# COURT SIZING: 50X80 WITH PLAY AREA OF 30X60



# NEXT STEPS:

- Seek Community Input
- Establish Court Operating Rules
- Construct Temporary facility (Summer 2024)
- Monitor Success (6-month, 9 month 12 months)
- Assess Benefit and determine retention, enhancement, other
- Return to Community on outcome and Next steps



# THANK YOU

[cathy.hickey@sport.com](mailto:cathy.hickey@sport.com)

