

LEASE OPPORTUNITY

490 JEFFERSON STREET

SAN FRANCISCO | CALIFORNIA



maven
RETAIL

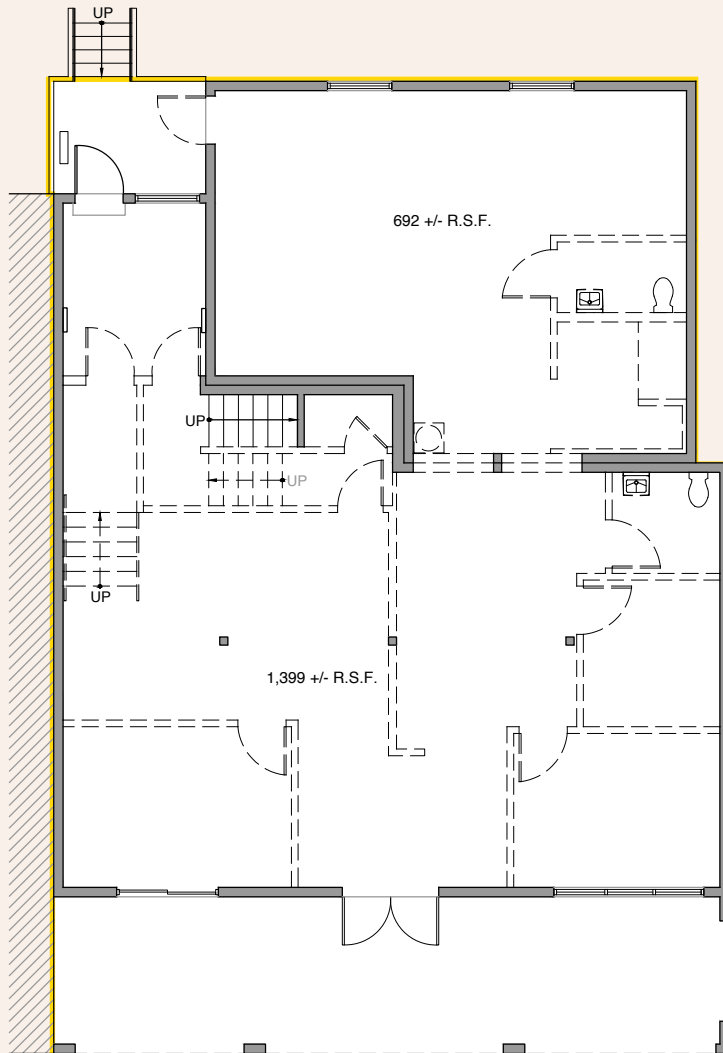
THE PROPERTY

This unique standalone commercial building is located in the heart of San Francisco's Fisherman's Wharf, one of the most popular tourist destinations in the city. The property offers 3,359 square feet of interior space plus a 380 square foot outdoor deck, and may be suitable for a variety of uses, including office, retail, or maritime-related uses. The building is located in a central Fisherman's Wharf location with excellent visibility and good signage opportunity. There is strong foot traffic in the area, making it a great place to attract customers. The property also has front and rear access, with potential for monthly parking.

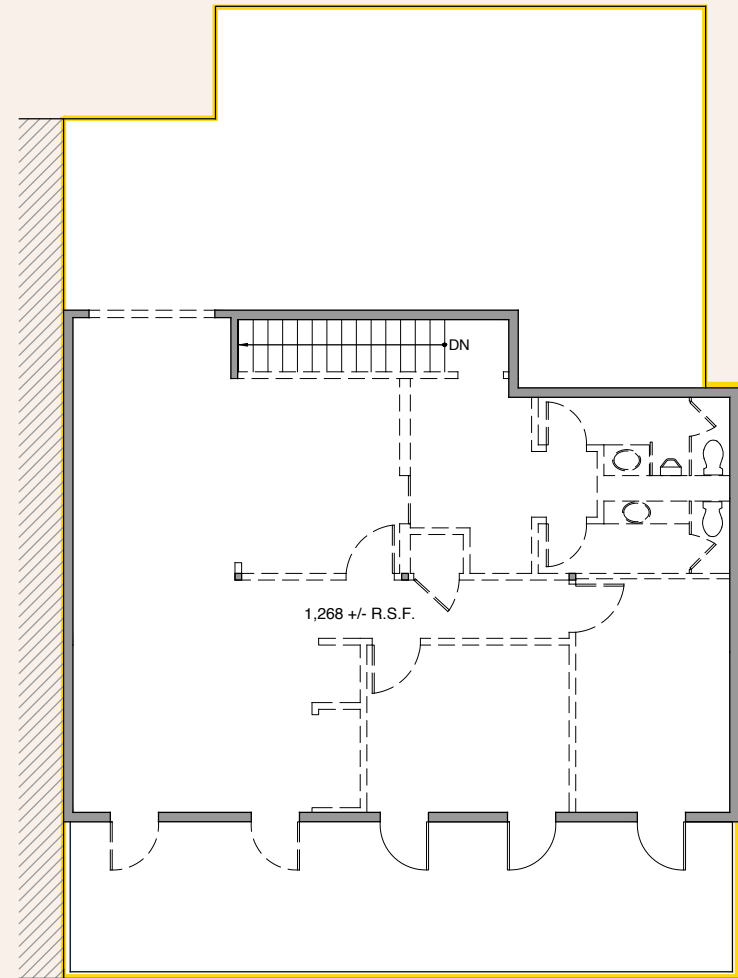


FLOOR PLANS

FIRST FLOOR PLAN



SECOND FLOOR PLAN

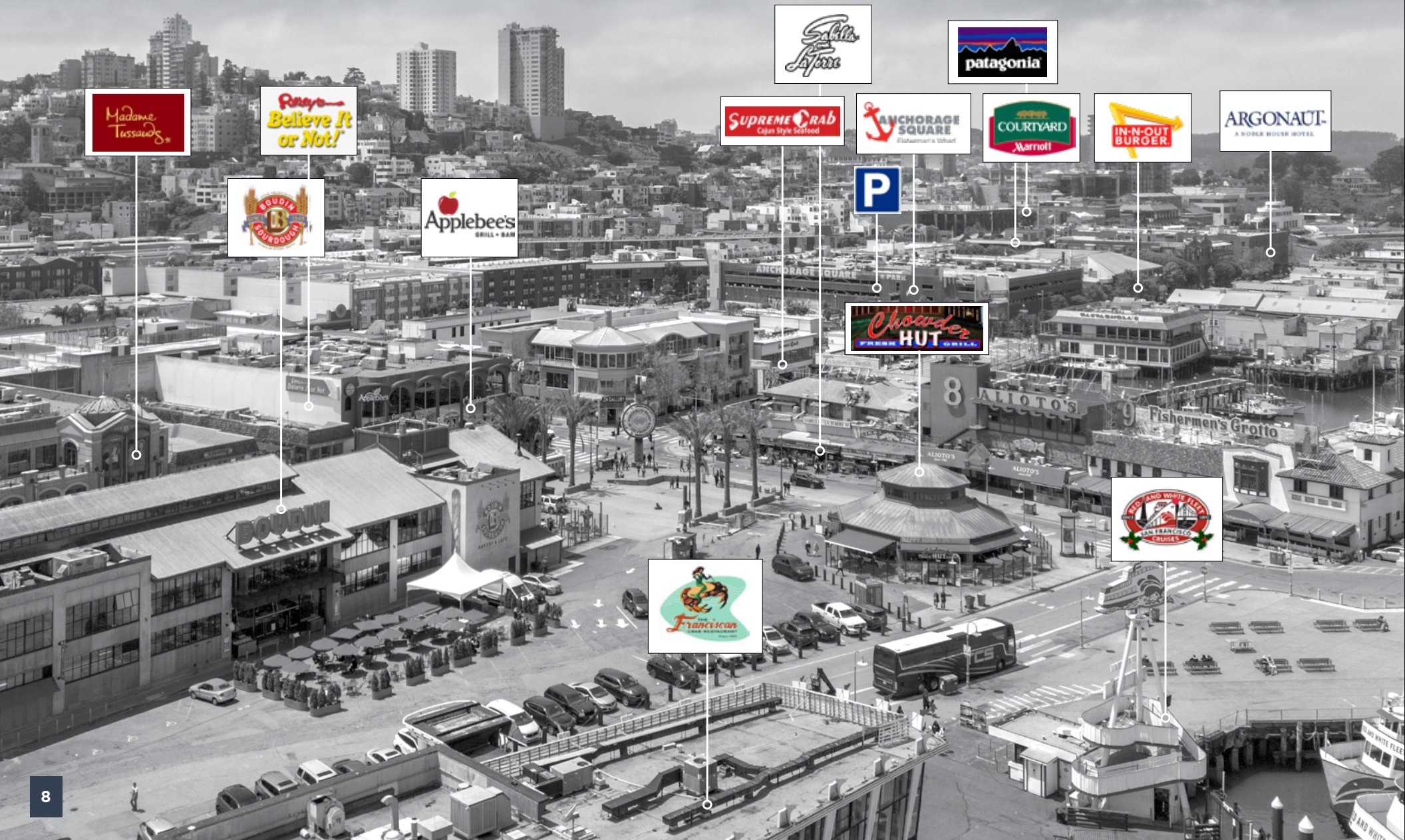




490
JEFFERSON

PARKING
NEGOTIABLE

OUR NEIGHBORS



NEIGHBORHOOD

CONNECTIVITY

AQUATIC PARK COVE



490 JEFFERSON



POWELL/HYDE CABLE CAR TURNAROUND



BEACH



NORTH POINT



GARY DANKO



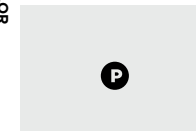
COLUMBUS



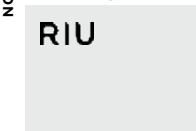
NORTH POINT



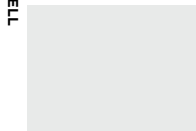
JONES



TAYLOR



NORTH POINT



POWELL



GRANT

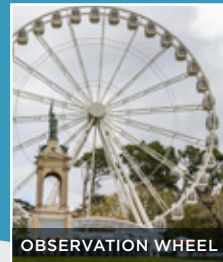


NORTH POINT

PIER 45 DEVELOPMENT
EXPERIENTIAL MUSEUM

45 PIER

THE GROTTO
Musée Mécanique



OBSERVATION WHEEL

THE FRANCISCAN
CRAB RESTAURANT

THE EMBARCADERO

JEFFERSON

THE EMBARCADERO

39 PIER



SAN FRANCISCO TOURISM BY THE NUMBERS

23.9

MILLION
SAN FRANCISCO
VISITORS
EXPECTED IN 2022

11.2

MILLION
DOMESTIC VISITORS
TO FISHERMAN'S
WHARF ALONE

\$8.7

BILLION
SPENT
IN 2023

5,000

HOTEL ROOMS
IN FISHERMAN'S
WHARF

490 JEFFERSON STREET

SAN FRANCISCO | CALIFORNIA

maven
RETAIL

CONTACT

CATHERINE MEUNIER

office 415.462.7679

catherine@mavenproperties.com

DRE #01843732

PAMELA MENDELSON

office 415.404.6650

pam@mavenproperties.com

DRE #00953050

SANTINO DEROSE

office 415.404.7337

sd@mavenproperties.com

DRE #01338326

NOTICE: This information has been secured from sources we believe to be reliable but we make no representations, warranties, express or implied, as to the accuracy of the information. Listing broker has been given enough information to provide only a preliminary interest in the property. The materials are not to be considered fact. The information contained herein is not a substitute for thorough due diligence investigation. References to square footage, zoning, use, or age are approximate. Please contact the San Francisco Planning Department to verify zoning at (415) 558-6378, as neither broker or landlord represent that this space is suitable for your use. Tenant or Buyer must verify the information at their own expense and bears all the risk for any inaccuracies. By receiving these materials you are agreeing to the disclaimers set forth herein. DRE#01878802

466 GREEN STREET SUITE #203 | SAN FRANCISCO, CA 94133 | 415-781-7700 | WWW.MAVENPROPERTIES.COM