

RESTAURANT OPPORTUNITY

# 340 JEFFERSON STREET

*San Francisco | California*



**maven**  
RETAIL

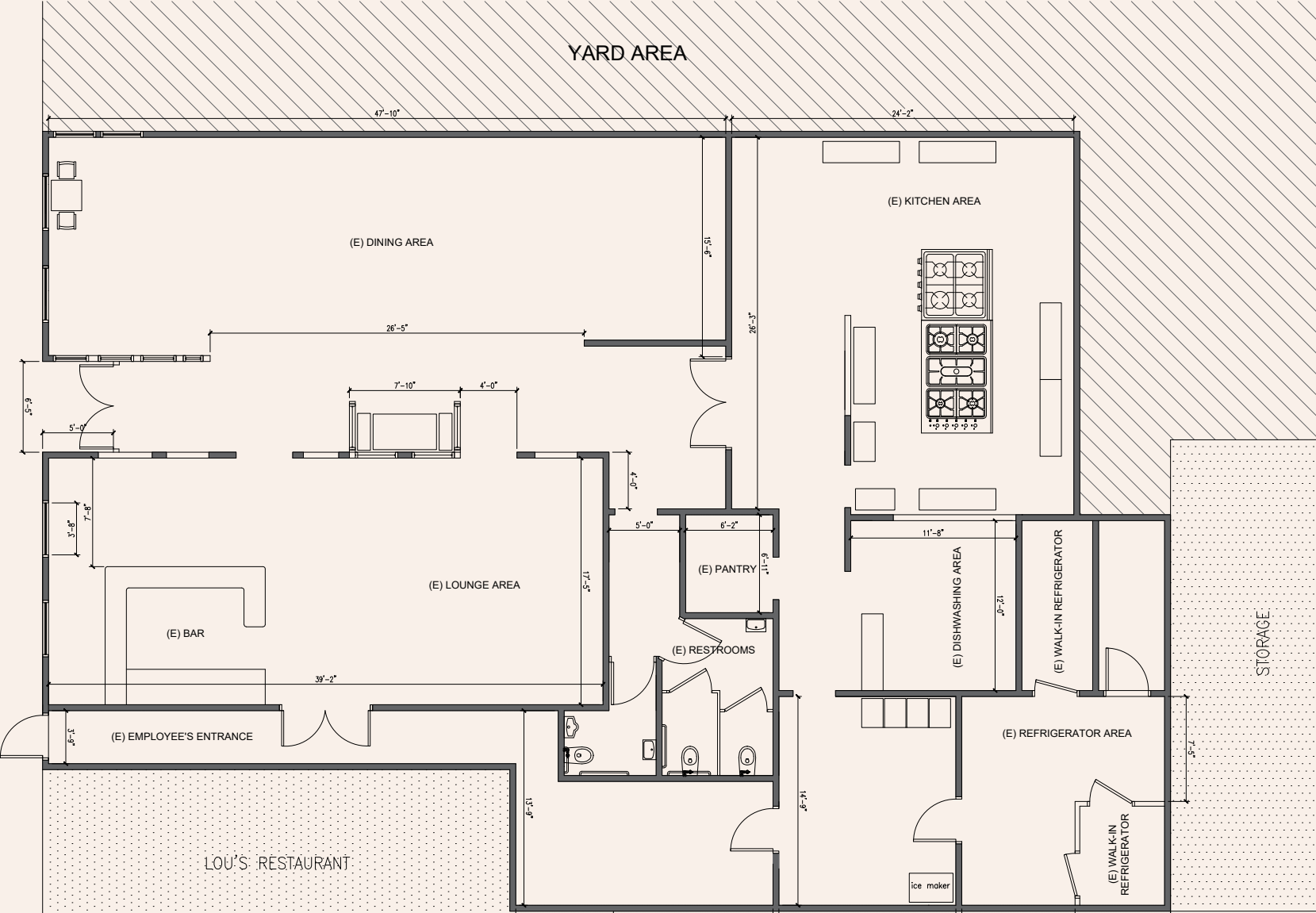


# THE PROPERTY

Second generation restaurant opportunity situated in the heart of San Francisco's iconic Fisherman's Wharf. The space features existing restaurant infrastructure, including a Type I hood, raw bar, and existing equipment and furniture. The prior occupant utilized a 120-person occupancy, not including the outdoor patio that runs along Jefferson Street. The property is located on one of the best blocks of San Francisco's Fisherman's Wharf.



# FLOOR PLANS









# OUR NEIGHBORS





# NEIGHBORHOOD

## CONNECTIVITY



## SAN FRANCISCO TOURISM BY THE NUMBERS

# 23.9

MILLION  
SAN FRANCISCO  
VISITORS  
EXPECTED IN 2022

# 11.2

MILLION  
DOMESTIC VISITORS  
TO FISHERMAN'S  
WHARF ALONE

**\$8.7**

BILLION  
SPENT  
IN 2023

5,000

## HOTEL ROOMS IN FISHERMAN'S WHARF



# 340 JEFFERSON STREET

*San Francisco | California*

**maven**  
RETAIL

## CATHERINE MEUNIER

office 415.462.7679  
catherine@mavenproperties.com  
DRE #01843732

## PAMELA MENDELSON

office 415.404.6650  
pam@mavenproperties.com  
DRE #00953050

## SANTINO DEROSE

office 415.404.7337  
sd@mavenproperties.com  
DRE #01338326

NOTICE: This information has been secured from sources we believe to be reliable but we make no representations, warranties, express or implied, as to the accuracy of the information. Listing broker has been given enough information to provide only a preliminary interest in the property. The materials are not to be considered fact. The information contained herein is not a substitute for thorough due diligence investigation. References to square footage, zoning, use, or age are approximate. Please contact the San Francisco Planning Department to verify zoning at (415) 558-6378, as neither broker or landlord represent that this space is suitable for your use. Tenant or Buyer must verify the information at their own expense and bears all the risk for any inaccuracies. By receiving these materials you are agreeing to the disclaimers set forth herein. DRE#01878802