

RESTAURANT OPPORTUNITY

300 JEFFERSON STREET

San Francisco | California



maven
RETAIL

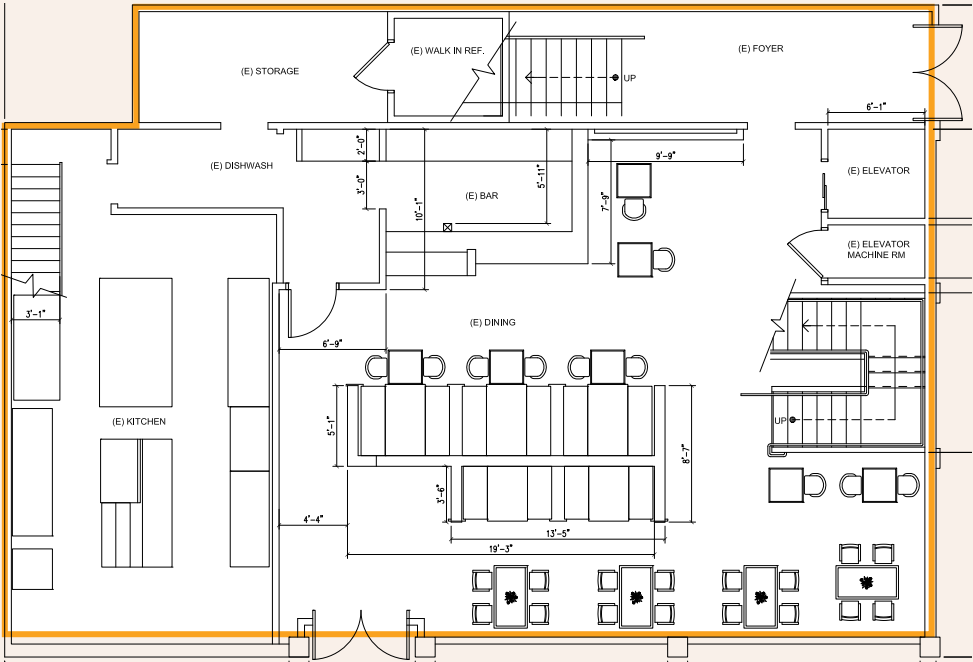
THE PROPERTY

Second-generation restaurant opportunity situated in the heart of San Francisco's iconic Fisherman's Wharf. This standalone building offers an opportunity to lease a well-located property with second-generation restaurant infrastructure, including a Type I hood and existing furniture, fixtures, and equipment. As patrons enter, they'll be greeted by an expansive full bar, high ceilings, and an abundance of natural light through both the first and second-floor windows – all overlooking the vibrant Jefferson Street corridor. The space features large roll-up garage doors that connect the interior space to the outside patio area, creating a welcoming blend of indoor and outdoor dining. The light-filled windows overlook Jefferson Street and the San Francisco Bay.

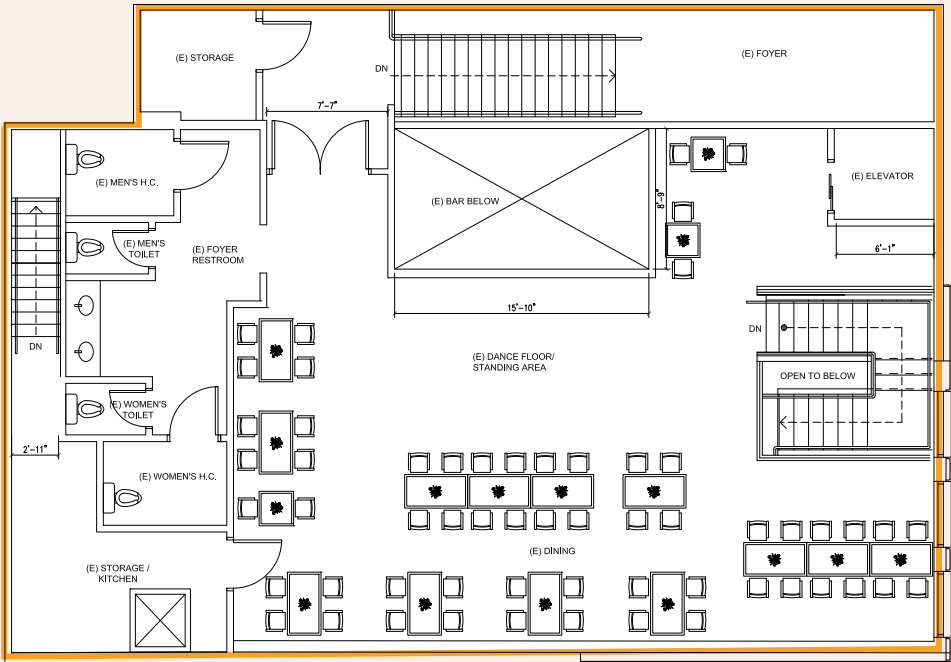


FLOOR PLANS

FIRST FLOOR PLAN



SECOND FLOOR PLAN









OUR NEIGHBORS



NEIGHBORHOOD

CONNECTIVITY



SAN FRANCISCO TOURISM BY THE NUMBERS

23.9

MILLION
SAN FRANCISCO
VISITORS
EXPECTED IN 2022

11.2

MILLION
DOMESTIC VISITORS
TO FISHERMAN'S
WHARF ALONE

\$8.7

BILLION
SPENT
IN 2023

5,000

HOTEL ROOMS IN FISHERMAN'S WHARF

300 JEFFERSON STREET

San Francisco | California

maven
RETAIL

CONTACT

CATHERINE MEUNIER

office 415.462.7679

catherine@mavenproperties.com

DRE #01843732

PAMELA MENDELSON

office 415.404.6650

pam@mavenproperties.com

DRE #00953050

SANTINO DEROSE

office 415.404.7337

sd@mavenproperties.com

DRE #01338326

NOTICE: This information has been secured from sources we believe to be reliable but we make no representations, warranties, express or implied, as to the accuracy of the information. Listing broker has been given enough information to provide only a preliminary interest in the property. The materials are not to be considered fact. The information contained herein is not a substitute for thorough due diligence investigation. References to square footage, zoning, use, or age are approximate. Please contact the San Francisco Planning Department to verify zoning at (415) 558-6378, as neither broker or landlord represent that this space is suitable for your use. Tenant or Buyer must verify the information at their own expense and bears all the risk for any inaccuracies. By receiving these materials you are agreeing to the disclaimers set forth herein. DRE#01878802

466 GREEN STREET SUITE #203 | SAN FRANCISCO, CA 94133 | 415-781-7700 | WWW.MAVENPROPERTIES.COM