

United States Department of the Interior
National Park Service

NATIONAL REGISTER OF HISTORIC PLACES
CONTINUATION SHEET

Figures

January 2006

Port of San Francisco Embarcadero Historic District

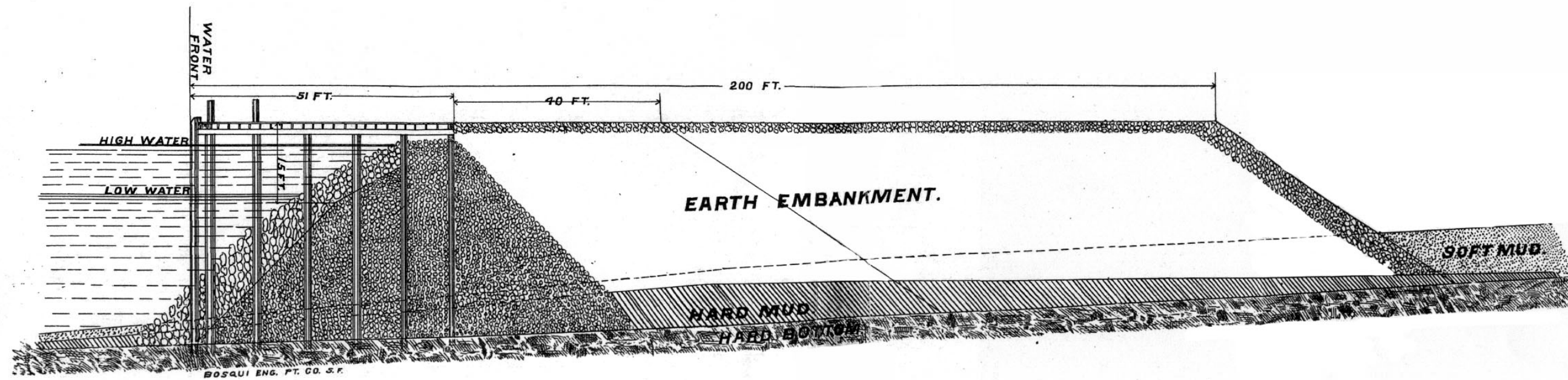
Page 1

=====

Figure 1. Original design of seawall, construction begun 1878. T.J. Arnold, Engineer of Seawall. Source: Crane 1882:n.p.

Figure 2. Modified design of seawall, construction begun 1909. H.J. Brunnier, Engineering Department. Source: Newman 1915:326.

Figure 3. Aerial Photograph of Waterfront. 2001. Source: Port of SF 2006



TRANSVERSE SECTION of SEA WALL and THOROUGHFARE.

SCALE 20 ft. = 1 INCH.

Figure 1. Original design of seawall, construction begun 1878. T.J. Arnold, Engineer of Seawall. Source: Crane 1882:n.p.

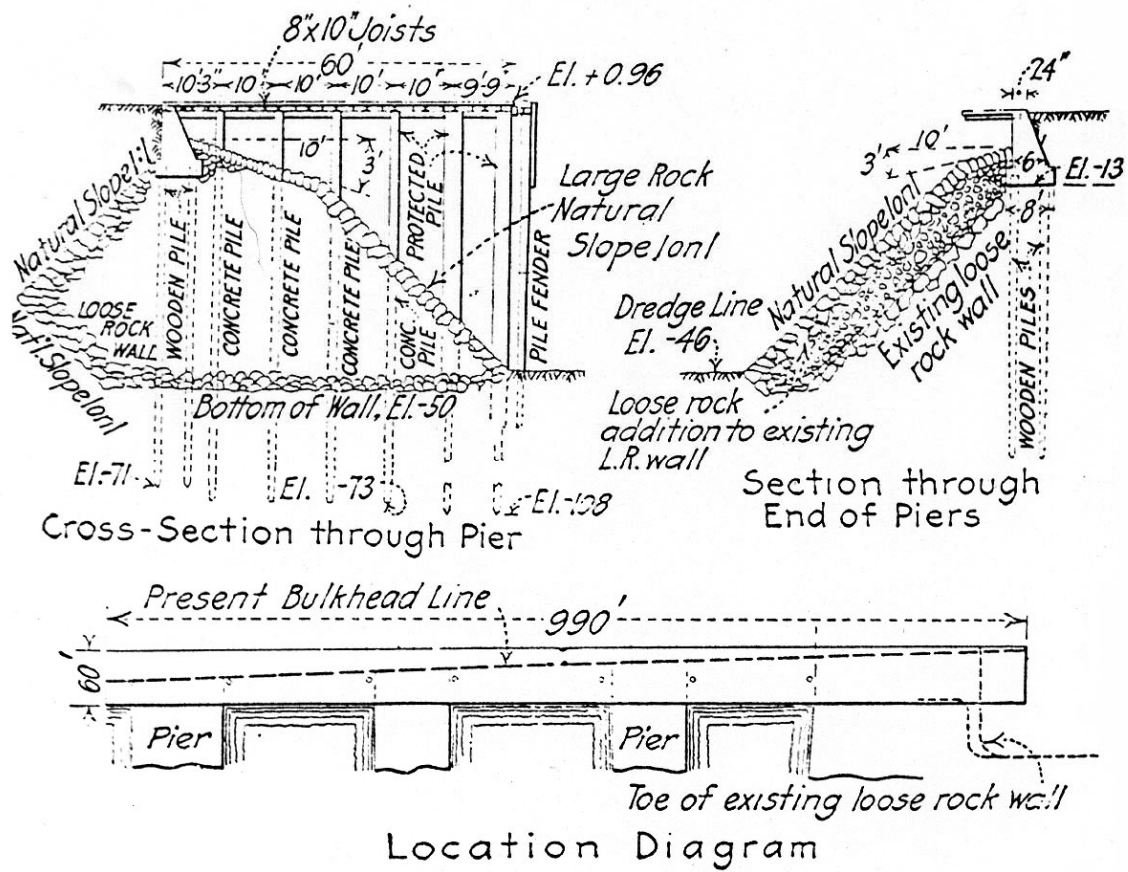


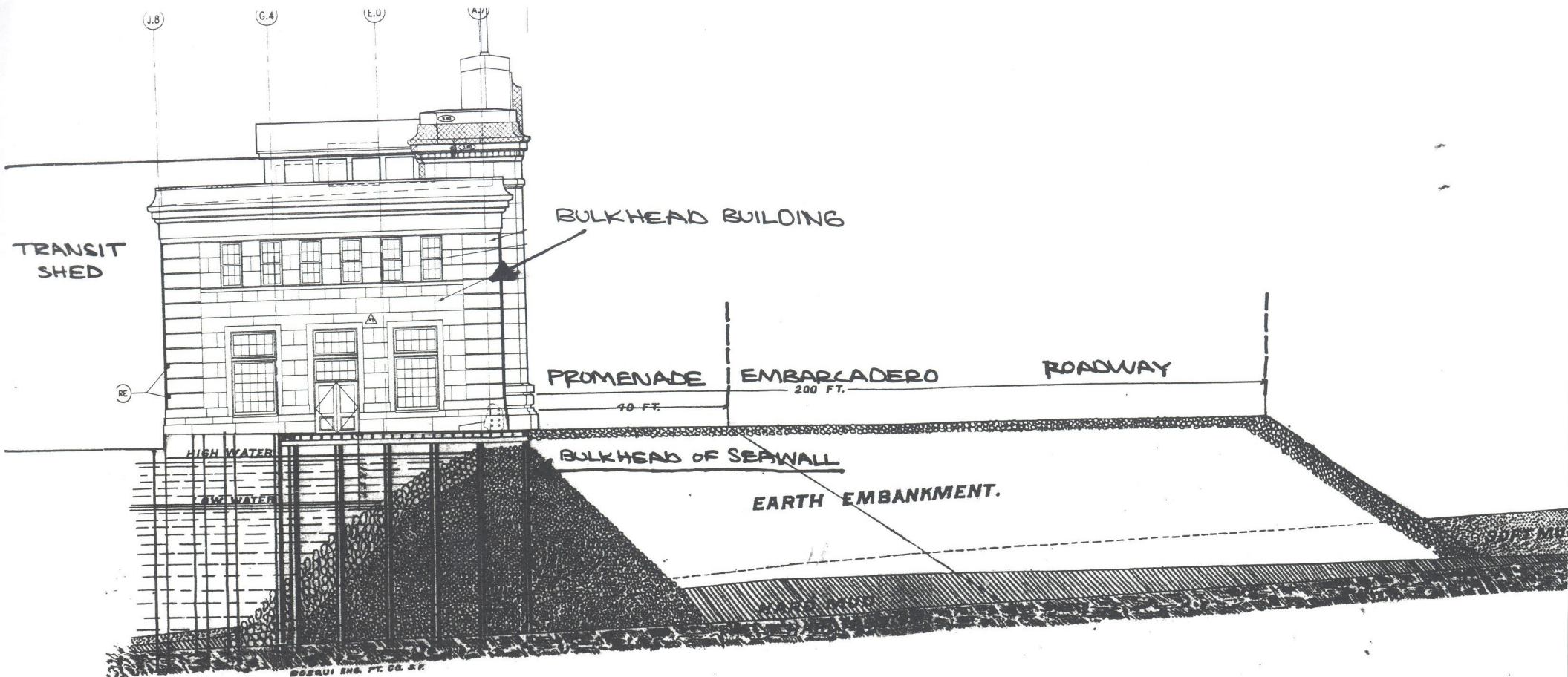
FIG. 1. DETAILS OF NEW SAN FRANCISCO SEA WALL

Figure 2. Modified design of seawall, construction begun 1909. H.J. Brunnier, Engineering Department. Source: Newman 1915:326.

Figure 3
AERIAL VIEW
EMBARCADERO NATIONAL REGISTER HISTORIC DISTRICT (Pier 45 to Pier 48 at China Basin)
Source: Port of San Francisco - 2002

— Historic District Boundary





TRANSVERSE SECTION of SEA WALL and THOROUGHFARE.

SCALE 20ft. = 1 INCH.

BULK HEAD WHARF CONDITIONS
WITH A PIER

Figure 1. Original design of seawall, construction begun 1878. T.J. Arnold, Engineer of Seawall. Source: Crane 1882:n.p.

EXHIBIT 3

BULKHEAD WHARF AND SEAWALL LOCATION BY SECTION Embarcadero National Register Historic District (Pier 45 - 48 at China Basin)

Source: Board of State Harbor Commissioners 1924 Biennial Report

Legend

Section B - 1000' between Taylor and Powell Streets - Constructed 1914.

Section A - 561' between Powell and Stockton Streets - Constructed in two parts in 1914.

Section 1 - 1000' between Stockton and Kearny Streets - Constructed in two parts in 1913-14 & 1914-15.

Section 2 - 1000' between North Point and Francisco Streets - Constructed in two parts in 1914-16 & 1917-19.

Section 3 - 1000' between Francisco and Lombard Streets - Constructed in three parts in 1915-16, 1917-18 & 1918-19.

Section 4 - 1000' between Lombard and Union Streets - Constructed in two parts in 1920 and 1921-22.

Section 5 - 1000' between Union and Vallejo Streets - Constructed in four parts in 1912-13, 1914-15, 1921-22 & 1930-31.

Section 6 - 800' between Vallejo and Pacific Streets - Constructed in three parts in 1916-17, 1917 & 1920.

Section 7 - 980' between Pacific and Clay Streets - Constructed in six parts in 1894-95, 1909, 1916, 1920, 1921-22 & 1929-30.

Section 8a - 392' between Clay and Market Streets - Constructed 1894-95.

Section 8b - 450' between Market and Mission Streets - Constructed 1915.

Section 8 - 300' between Mission and point north of Howard Streets - Constructed 1915.

Section 9a - 990' south of Mission to Folsom Street - Constructed 1913 and demolished in 1975 and 1983.

Section 9b - 788' between Folsom and Harrison Streets - Constructed 1913, all but 60' was demolished in 1983.

Section 9 - 990' south of Mission to Folsom Street - Constructed in two parts in 1909-10.

Section 10 - 537' north of Beale to Main Street - Constructed 1910-11.

Section 11a - 281' south of Main to Beale Street - Constructed 1912-14.

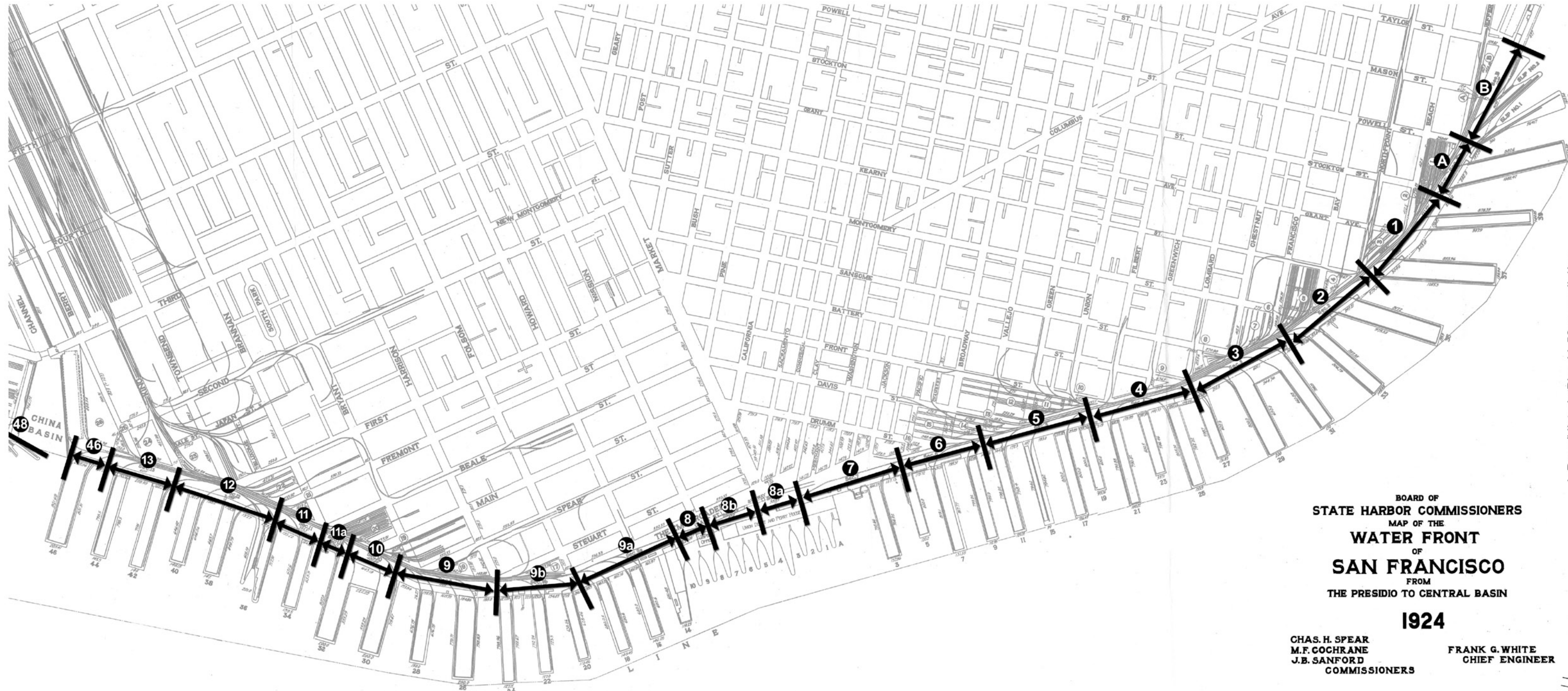
Section 11 - 353' north of Beale to Fremont Street - Constructed 1909-10.

Section 12 - 1167' between Fremont and King Streets - Constructed in two parts in 1909.

Section 13 - 600' between King and Berry Streets - Constructed in two parts in 1917-18 & 1935-36.

Pier 46 Section - 236' between Berry Street and China Basin Channel - Constructed in 1914.

Pier 48 Section - 500' north side of Pier 50 to China Basin Channel - Constructed 1928-29.



I: Paez/Historic Pier 41-50 seawall-1.jpg