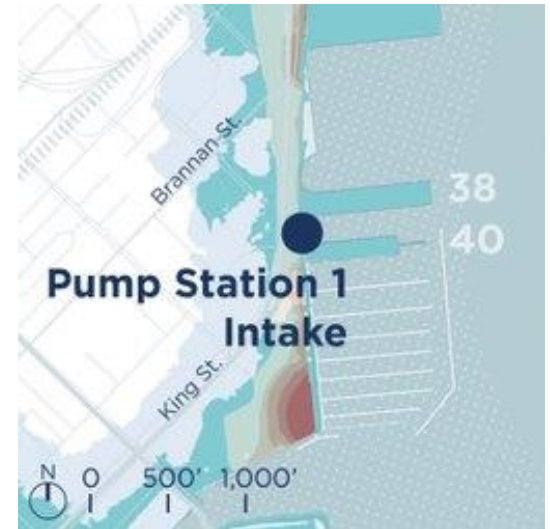
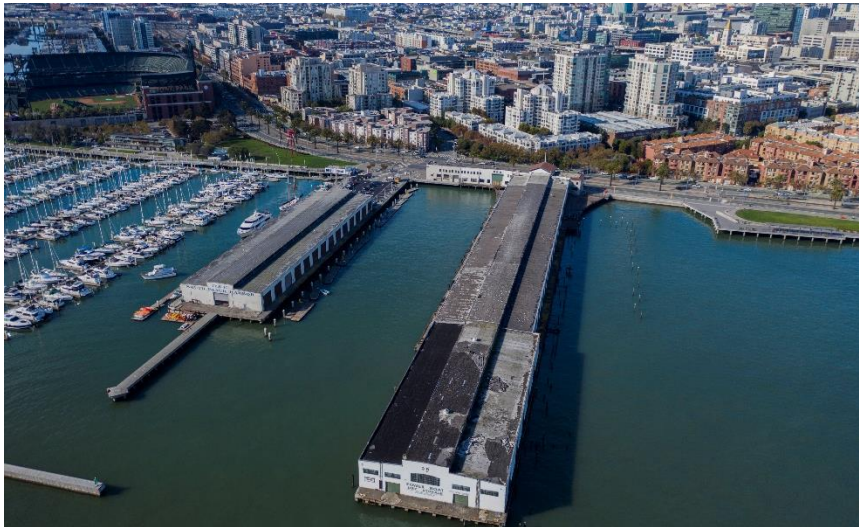


Emergency Firefighting Water System, Intake Tunnel #1 Earthquake Reliability Project (SFPUC Coordination)



About the Project

The Emergency Firefighting Water System is critical for fighting fires, including those that could start following an earthquake, by supplying high-pressure water from reservoirs and Bay sources to dedicated hydrants citywide. Pump Station 1, one of two for the system, draws Bay water through an intake tunnel that passes through the Seawall between Piers 38 and 40. This project focuses on coordination among the Port, San Francisco Public Utilities Commission, and San Francisco Fire Department to ensure the intake tunnel at Pump Station 1 functions reliably as it passes through the Seawall.

Project Benefits	Project Details	Responds to Community Feedback
<ul style="list-style-type: none"> <input checked="" type="checkbox"/> Earthquake Safety <input checked="" type="checkbox"/> Disaster Response Improvement <input type="checkbox"/> Coastal Flood Defense <input type="checkbox"/> Public Space Enhancement <input type="checkbox"/> Historic Preservation <input type="checkbox"/> Bay Habitat 	<p>Status: Planning</p> <p>Cost: TBD</p> <p>Duration: TBD</p> <p>Complexity: Low</p>	<p>✓ Prioritizes life safety and emergency response.</p>