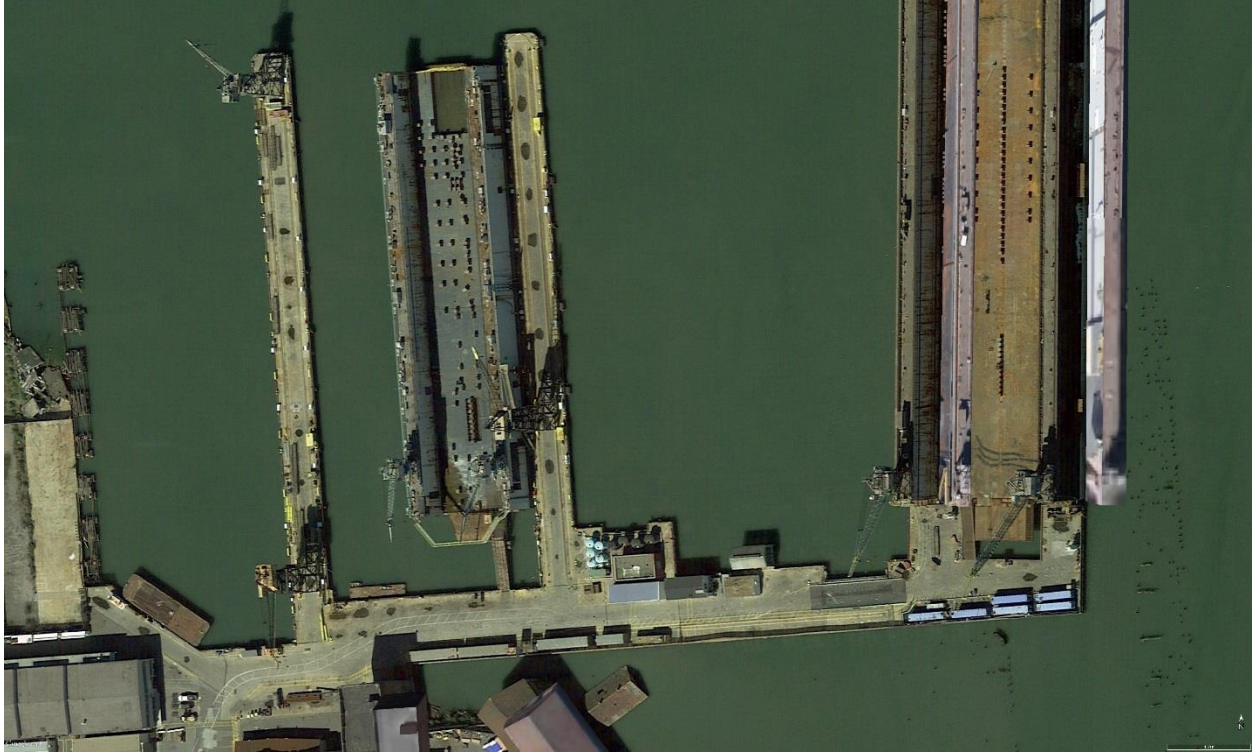


Pier 68-70 Shipyard Facility Condition Survey High-Value Equipment Inventory



Prepared for:



Prepared by:



A Joint Venture

2185 North California Blvd, Suite 500
Walnut Creek, CA 94596
July 21, 2017
Job: 9590-06

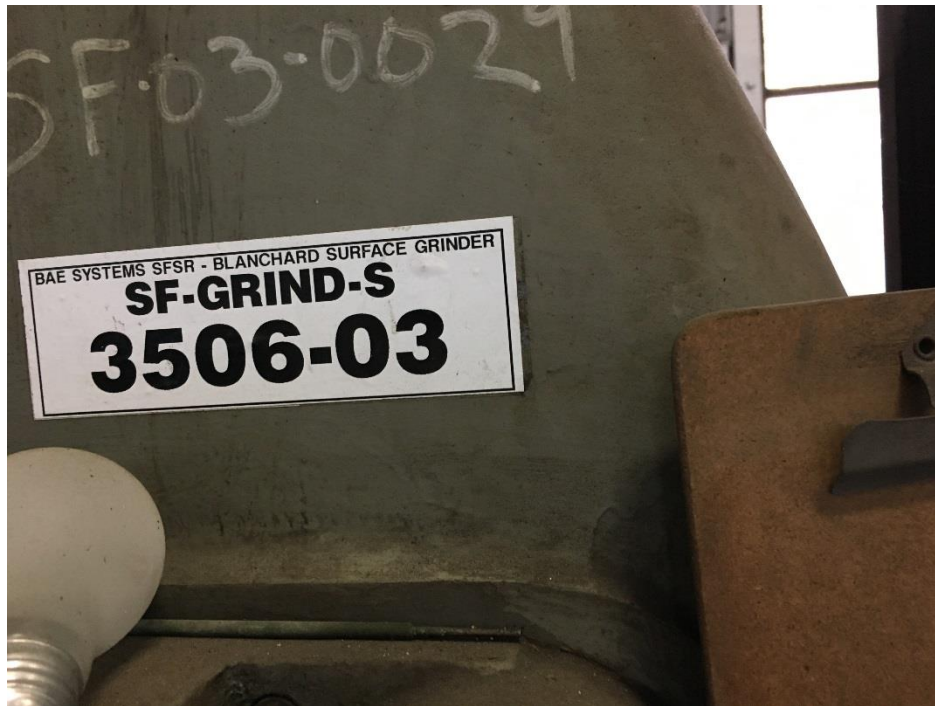
This Page Intentionally Blank



Pier 68-70 High Value Equipment Inventory

The Inventory provides a brief description and photos of high-value equipment remaining in the yard which includes machine and steel shop equipment, paint and blasting equipment, and heavy mobile equipment. The list of equipment was based on an inventory prepared by the previous tenant (BAE Systems) of all equipment (approximately over 1,000 items)– which was narrowed down to include only those that are considered “high-value”. This report also includes some equipment which do not have an “equipment Number or Asset ID number”. This report was prepared to present them to potential future lessee who will be able to use these equipment as part of the lease agreement with the Port of San Francisco (POSF). Photos (taken June-July 2017), brief descriptions, and locations of the equipment are included in this report. No test was conducted on any of the equipment.

The following spreadsheet represents the equipment list provided by the POSF for identification. The equipment’s in rows highlighted in yellow have been confirmed at their given location and have been photographed. The equipment in rows highlighted in blue were not located. The first column in the chart provides a 2 digit code which corresponds to shop location as well as a four digit code which is the individual equipment identifier. The equipment identifier code is located on the body of the equipment as shown in the figure below:



Equipment Identification Plaque Attached to Grinder

In the following chart, the equipment marked out of service may have minor repairable problems or may have major problems that are uneconomical to repair.

The photo log following the chart is organized in the order of the craft code (The two digit code of the first column)



Equipment No.	Description	In Service	Verified and Photographed	Field Notes
SF-BOB-CAT-2764-02	SKID-STEER LOADER	Y	Yes	North of Bldg 105
SF-FORK-2768-02	CAT GP40K-LP P8000 FORKLIFT # 815	Y	Yes	Outside Bldg 108
SF-FORK-2769-02	CAT GP40K-LP P8000 FORKLIFT #816	Y	Yes	Bldg 109
SF-FORK-2782-02	CAT GP40N1-LP P8000 FORKLIFT #818	Y	Yes	Storage Area East of Bldg 111
SF-SPRAY-HYD-3750-02	GRACO HYDRAULIC POWER PACK PAINT PUMP SPRAYER G-1	Y	Yes	Outside bldg 251
SF-SPRAY-HYD-3751-02	GRACO HYDRAULIC POWER PACK PAINT PUMP SPRAYER G-2	Y	Yes	Outside bldg 251
SF-SPRAY-HYD-3752-02	GRACO HYDRAULIC POWER PACK PAINT PUMP SPRAYER G-3	Y	Yes	Outside bldg 251
SF-SPRAY-HYD-3753-02	GRACO HYDRAULIC POWER PACK PAINT PUMP SPRAYER G-4	Y	Yes	Outside bldg 251
SF-SPRAY-BTH-3766-02	PAINT SHOP SPRAY BOOTH	Y	Yes	This is a room in Bldg 109 w/ ventilation system
SF-DEHUM-4350-02	SANDBLAST BOOTH DEHUMIDIFIER	Y	Yes	Outside bldg 251
SF-SANDPOT-4351-02	SANDBLAST POT #7	Y	Yes	Drydock 2
SF-SANDPOT-4352-02	SANDBLAST POT #8	Y	Yes	Drydock 2
SF-SANDPOT-4353-02	SANDBLAST POT #5	Y	Yes	Drydock 2
SF-SANDPOT-4354-02	SANDBLAST POT #6	Y	Yes	Drydock 2
SF-SANDPOT-4355-02	1500LBS DUSTLESS BLASTER #1	Y	Yes	Outside bldg 109
SF-SANDPOT-4356-02	1500LBS DUSTLESS BLASTER #2	Y	Yes	Outside bldg 109
SF-SANDPOT-4357-02	1500LBS DUSTLESS BLASTER #3	Y	Yes	Outside bldg 109
SF-LOCKER-P-5025-02	PAINT LOCKER #1	Y	Yes	Outside bldg 109
SF-LOCKER-P-5026-02	PAINT LOCKER #2	Y	Yes	Outside bldg 109
SF-LOCKER-P-5027-02	PAINT LOCKER #3	Y	Yes	Outside bldg 109
SF-LOCKER-P-5032-02	PAINT LOCKER #4	Y	Yes	Outside bldg 109
SF-SOLVT-RYCL-5050-02	SOLVENT RECYCLER	Y	Yes	Outside bldg 109
SF-PUMP-MAN-2610-03	150 TON HYDRAULIC CYLINDER PUMP	Y	No	unable to locate
SF-BLST-SND-3050-03	UNIVERSAL DRY BLAST CABINET #200	Y	Yes	bldg 36
SF-DRILL-PR-3350-03	STRANDS DRILL PRESS	Y	Yes	bldg 36
SF-DRILL-PR-3351-03	ROCKWELL DRILL PRESS	Y	No	unable to locate
SF-DRILL-RA-3352-03	CINCINNATI BICKFORD-SUPR SERV-RAD ARM DRILL PRESS	N	Yes	bldg 38
SF-GRIND-S-3506-03	36" BLANCHARD SURFACE GRINDER #75	Y	Yes	bldg 36
SF-GRINDER-3507-03	LARGE STANDARD GRINDER	Y	Yes	bldg 36
SF-LATHE-3600-03	POREBA LATHE	N	Yes	bldg 36
SF-LATHE-3601-03	LEBLONDE 16" HEAVY DUTY ENGINE LATHE	Y	Yes	bldg 36
SF-LATHE-3602-03	UNIVERSAL SZERSZAMGEPIPARI MUREK LATHE	Y	Yes	bldg 36
SF-LATHE-3603-03	OSTER LATHE	Y	No	unable to locate
SF-LATHE-3604-03	WAFUM WROCLAW LATHE	Y	Yes	bldg 36
SF-LATHE-3605-03	CLAUSING-COLCHESTER 15" LATHE	N	Yes	bldg 36
SF-LATHE-3606-03	60" X 30' NILES HEAVY DUTY FORGE LATHE #174	N	Yes	bldg 36
SF-LATHE-3612-03	SHARP LATHE	Y	Yes	bldg 36
SF-MILL-HOR-3700-03	BRIDGEPORT HORIZONTAL MILLING MACHINE	Y	Yes	bldg 36
SF-MILL-HOR-3701-03	BRIDGEPORT HORIZONTAL MILLING MACHINE	Y	Yes	bldg 36
SF-MILL-HOR-3702-03	G-L FLR-HORIZONTAL-BORING DRILL-MILLING MACH-#182	Y	No	unable to locate
SF-MILL-3703-03	CINCINNATI 5HP OVRHD SPINDLE DIAL-MILL MACH #61-#4	N	No	unable to locate
SF-MILL-3704-03	LUCAS PRECISION BORING - MILLING MACHINE	Y	Yes	bldg 36
SF-MILL-VER-3705-03	KING 62" HEAVY DUTY VERTICAL BORING MILL	Y	Yes	bldg 36
SF-HYDRO-PUMP STA-3930-03	5000 PSI HYDRO PUMP STATION	Y	No	unable to locate

SF-HYDRO-PUMP STA-3931-03	10000 PSI HYDRO PUMP STATION	Y	No	unable to locate
SF-PRES-HYD-4100-03	HYDRAULIC PRESS #193	Y	Yes	bldg 36 - In service, MP2 data is out of date
SF-PRESS-4101-03	FAMCO PRESS	Y	Yes	bldg 36
SF-GANG-0200-04	20 FT GANGWAY	Y	Yes	Wharf 3
SF-GANG-0201-04	20 FT GANGWAY	Y	Yes	Wharf 3
SF-GANG-0202-04	20 FT GANGWAY	Y	Yes	Wharf 3
SF-GANG-0203-04	20 FT GANGWAY	Y	Yes	Wharf 3
SF-GANG-0204-04	28 FT GANGWAY	Y	Yes	Wharf 3
SF-GANG-0205-04	30 FT GANGWAY	Y	Yes	Wharf 3
SF-GANG-0206-04	35 FT GANGWAY	Y	No	unable to locate
SF-GANG-0207-04	45 FT GANGWAY	Y	Yes	Wharf 3
SF-GANG-0208-04	60 FT GANGWAY	Y	Yes	Wharf 3
SF-GANG-0209-04	70 FT GANGWAY	Y	Yes	Wharf 3
SF-GANG-0210-04	35 FT GANGWAY	Y	Yes	Wharf 3
SF-GANG-0211-04	50 FT GANGWAY	Y	Yes	Wharf 3
SF-HOIST-P-2337-04	#BAE 601, 6 TON PNEUMATIC AIR HOIST - JD NEUHAUS	Y	Yes	bldg 111
SF-HOIST-P-2338-04	#BAE 602, 6 TON PNEUMATIC AIR HOIST - JD NEUHAUS	Y	Yes	bldg 111
SF-HOIST-P-2339-04	#BAE 603, 6 TON PNEUMATIC AIR HOIST - JD	Y	Yes	bldg 111
SF-HOIST-P-2340-04	#BAE 604, 6 TON PNEUMATIC AIR HOIST - JD NEUHAUS	Y	Yes	bldg 111
SF-HOIST-P-2341-04	#00118377789, 6 TON PNEUMATIC HOIST - JD NEUHAUS	Y	Yes	bldg 111
SF-HOIST-P-2343-04	#P900621, 16 TON PNEUMATIC AIR HOIST - JD NEUHAUS	Y	Yes	bldg 111
SF-HOIST-P-2344-04	#P900623, 16 TON PNEUMATIC AIR HOIST - JD NEUHAUS	Y	Yes	bldg 111
SF-HOIST-P-2345-04	#BAE 2501, 25 TON PNEUMATIC AIR HOIST - SN 3100220	Y	Yes	bldg 111
SF-HOIST-P-2346-04	#BAE 2502, 25 TON PNEUMATIC AIR HOIST - SN 3100222	Y	Yes	bldg 111
SF-HOIST-P-2347-04	#BAE 2503, 25 TON PNEUMATIC AIR HOIST - SN 3100227	Y	Yes	bldg 111
SF-HOIST-P-2348-04	#BAE 2504, 25 TON PNEUMATIC AIR HOIST - SN 3100229	Y	Yes	bldg 111
SF-HOIST-P-2349-04	#BAE 2505, 25 TON PNEUMATIC AIR HOIST - SN 3100228	Y	Yes	bldg 111
SF-HOIST-P-2350-04	#BAE 2506, 25 TON PNEUMATIC AIR HOIST - SN 3100221	Y	Yes	bldg 111
SF-HOIST-P-2351-04	#BAE 5003, 50 TON PNEUMATIC AIR HOIST - SN 8000073	Y	Yes	bldg 111
SF-HOIST-P-2352-04	#BAE 5004, 50 TON PNEUMATIC AIR HOIST - SN 8000087	Y	Yes	bldg 111
SF-SPRDR-BAR-4300-04	SPREADER BAR 45 TON CAPACITY x 36 FEET	Y	Yes	Wharf 3
SF-SPRDR-BAR-4301-04	SPREADER BAR 20 TON CAPACITY x 21 FEET	Y	Yes	Wharf 3
SF-SPRDR-BAR-4302-04	SPREADER BAR 15 TON CAPACITY x 15 FEET	Y	Yes	bldg 111
SF-SPRDR-BAR-4303-04	SPREADER BAR 6.5 TON CAPACITY X 8.5 FEET	Y	No	unable to locate
SF-PRES-MCB-3150-05	13 X 8 CINCINNATI MECHANICAL PRESS BRAKE	Y	No	unable to locate
SF-PRES-MCB-3151-05	400 X 14 CINCINNATI MECHANICAL PRESS BRAKE	Y	No	unable to locate
SF-CUT-TBL-3201-05	PLATE PRO EXTREME CNC PLASMA CUTTING MACHINE	N	Yes	bldg 105
SF-DRILL-PR-3354-05	WALKER-TURNER DRILL PRESS	Y	No	unable to locate
SF-DRILL-RA-3355-05	CARLTON 6' ARM ON 15" COL. RADIAL DRILL PRESS	Y	Yes	bldg 105
SF-BNDR-PIP-3900-05	PIPE BENDER #16	Y	No	unable to locate
SF-IRON-WKR-4200-05	BUFFALO IRON WORKER / PUNCH NO. 1 1/2	Y	Yes	bldg 105
SF-ROLLER-4250-05	16' POPE ROLLER	Y	No	unable to locate
SF-ROLLER-4251-05	KLING ROLLER	Y	Yes	bldg 105
SF-ROLLER-4252-05	32' BALDWIN SOUTHWARK PLATE BENDING ROLLER ROLLER	Y	No	unable to locate
SF-SAND-BLT-4505-05	WILSON BELT SANDER	Y	Yes	bldg 38
SF-SAW-AB-4553-05	SEVER-ALL ABRASIVE CUT-OFF SAW	N	Yes	bldg 105
SF-SHEAR-MC-4702-05	WYSONS SHEAR	Y	Yes	bldg 105

SF-SHEAR-MC-4703-05	HYDROPOWER 244" X 1/2" SHEAR	Y	Yes	bldg 105
SF-BLST-SND-3051-06	SILVERADO SAND BLAST CABINET	Y	Yes	Bldg. 251
SF-DRILL-PR-3358-06	BUFFALO NO. 18 DRILL PRESS	Y	No	unable to locate
SF-LATHE-3607-06	LANDIS 6" PIPE THREADING LATHE	Y	Yes	bldg 105
SF-LATHE-3608-06	60" X 36' NILES HEAVY DUTY FORGE LATHE	Y	Yes	bldg 105
SF-BNDR-PIP-3901-06	COAST 6' IRON PIPE BENDER	Y	Yes	bldg 105
SF-BNDR-PIP-3902-06	PIPE BENDER #16	Y	Yes	bldg 105
SF-PUNCH-4201-06	ROTEX PUNCH	Y	Yes	bldg 105
SF-SAW-BND-4557-06	MARVEL SERIES 8 BAND SAW	Y	Yes	bldg 105
SF-SAW-BND-4558-06	MARVEL SERIES 8 BAND SAW	Y	Yes	bldg 105
SF-SHEAR-CR-4704-06	NIAGARA CIRCLE SHEAR	Y	Yes	bldg 105
SF-SOCKET-WELDER-5000-06	SOCKET WELDING MACHINE 3500	Y	No	unable to locate
SF-WIRE-WHL-5035-06	BESLY WIRE WHEEL BUFFER #41	Y	Yes	bldg 105
SF-VEH-BOA-1011-09	BOAT #1	Y	Yes	Storage Area East of Bldg 111
SF-VEH-BOA-1012-09	BOAT #2	Y	Yes	Storage Area East of Bldg 111
SF-BLST-SND-3052-09	SILVERADO SAND BLAST CABINET	N	No	Not in the yard
SF-LATHE-3609-09	LEBLONDE 18" HEAVY DUTY SCREW REVERSE LATHE #68	N	No	Not in the yard
SF-FORK-2752-11	KOMATSU FORKLIFT #806	Y	No	Not in the yard
SF-FORK-2757-11	KOMATSU FORKLIFT #805	N	No	Not in the yard
SF-FORK-2758-11	KOMATSU FORKLIFT #807	N	No	Not in the yard
SF-FORK-2759-11	KOMATSU FORKLIFT #808	N	No	Not in the yard
SF-FORK-2760-11	KOMATSU FORKLIFT #810	N	No	Not in the yard
SF-FORK-2763-11	KOMATSU FORKLIFT #115	N	No	Not in the yard
SF-FORK-2766-11	CAT GP40K-LP FORKLIFT #813	Y	Yes	bldg 109
SF-FORK-2767-11	CAT GP40K-LP FORK LIFT #814	N	No	Not in the yard
SF-FORK-2791-11	HYSTER FORKLIFT #333 29500K-D	Y	Yes	yard area between bldg 109 & 105
SF-SPIDER-5037-11	1000LB 40' SPIDER BASKET #1	Y	Yes	attached to west side of Dry Dock No.2
SF-SPIDER-5038-11	1000LB 40' SPIDER BASKET #2	Y	Yes	attached to west side of Dry Dock No.2
SF-DRILL-PR-3361-12	PACKARD PRECISION HEAVY DUTY DRILL PRESS	Y	Yes	bldg 108 second floor
SF-LATHE-3610-12	OLIVER 24" MOTOR-HEAD WOOD TURNING LATHE W/14' BED	N	Yes	bldg 108 second floor
SF-PLANER-4050-12	OLIVER PLANER #1	Y	Yes	bldg 108 second floor
SF-PRES-MCB-3152-15	50 X 10 CINCINNATI MECHANICAL BRAKE	Y	Yes	bldg 109
SF-PRES-MCB-3153-15	50 X 10 CINCINNATI MECHANICAL BRAKE	Y	Yes	bldg 109
SF-GRIND-BT-3520-15	BELT GRINDER #29	Y	Yes	bldg 109
SF-GRINDER-3525-15	LARGE STANDARD GRINDER	Y	Yes	bldg 109
SF-IRON-WKR-4202-15	BUFFALO IRON WORKER / PUNCH NO. 1/2	Y	Yes	bldg 109
SF-PUNCH-4204-15	W.A. WHITNEY DUPLICATOR PUNCH #23	Y	Yes	bldg 109
SF-PUNCH-4205-15	BUFFALO PUNCH #39	Y	Yes	bldg 109
SF-PUNCH-4206-15	SQUARE PUNCH #20	N	Yes	bldg 38
SF-SAW-BND-4575-15	DOALL BAND SAW #34	Y	Yes	bldg 109
SF-SHEAR-MC-4709-15	CINCINNATI SHEAR #44	Y	Yes	bldg 109
SF-SHEAR-MC-4710-15	PULLMAX UNIVERSAL SHEARING-FORMING MACHINE #37	Y	Yes	bldg 109
SF-SHEAR-MC-4711-15	ELECTRIC SHEAR #32	Y	Yes	bldg 109
SF-WELDER-SPT-5008-15	DOALL BUTTWELDER / GRINDER / SHEAR CUTTER	Y	Yes	bldg 109
SF-LOCK-MCH-5011-15	LOCKFORMER PITTSBURG LOCKFORMING MACHINE #62	Y	No	unable to locate
SF-LOCK-MCH-5012-15	LOCKFORMER PITTSBURG LOCKFORMING MACHINE	Y	Yes	bldg 109
SF-LOCK-MCH-5013-15	FLAGLER PITTSBURG LOCKFORMING MACHINE	Y	Yes	bldg 109

SF-ROLL-FMR-5014-15	MAPLEWOOD ROLL FORMING COMBINATION MACHINE	Y	No	unable to locate
SF-WELDER-SPT-5015-15	THOMSON SPOT WELDER W/ CONTROL PANEL	Y	No	Not in the yard
SF-WELDER-SPT-5016-15	ACME SPOT WELDER #2	Y	Yes	bldg 109
SF-SEWING-5004-18	SINGER INDUSTRIAL SEWING MACHINE	Y	Yes	Bldg. 109 Second Floor
SF-GEN-DSL-2700-19	WHISPERWATT 125 480V-300 AMP DIESEL GENERATOR-DD#1	N	No	Removed from yard
SF-GEN-DSL-2701-19	DIESEL GENERATOR 480V-300 AMP FOR DD #2	Y	Yes	Dry Dock No.2
SF-GEN-DSL-2702-19	CATERPILLER XQ300 DIESEL GENERATOR - 300KW	Y	Yes	Bldg 111
SF-FORK-2790-19	CAT P10000-LP FORKLIFT #817	Y	Yes	Storage Area East of Bldg 111
SF-LATHE-3611-19	MONARCH 30" LATHE	N	No	out of service (locked up)



Bobcat Skid-Steer Loader (North of Bldg. 105)

SF-BOB-CAT-2764-02



CAT GP40K-LP P8000 FORKLIFT # 815 (Outside Bldg. 108)

SF-FORK-2768-02



CAT GP40K-LP P8000 Forklift #816 (inside Bldg. 109)

SF-FORK-2769-02



CAT GP40N1-LP P8000 FORKLIFT #818 (Storage Area East of Bldg. 111)

SF-FORK-2782-02



Graco Hydraulic Power Pack Paint Pump Sprayer (4 units – two each trailer outside Bldg. 109)

SF-SPRAY-HYD-3750-02 to SF-SPRAY-HYD-3753-02



Paint Spray Booth (one of rooms in Bldg. 109) with Ventilation System

SF-SPRAY-BTH-3766-02



Sandblast Pot near Drydock #2 (four units – photo of typical unit shown. Tare weight=9500 lbs. each unit.)

sF-SANDPOT-4351-02 to SF-SANDPOT-4354-02



Dustless Blaster. Year built 2015. (3 tanks outside Bldg. #109)

SF-SANDPOT-4355-02 - SF-SANDPOT-4357-02



Paint Lockers 4 unit (outside Bldg. 109)

SF-LOCKER-P-5025-02 - SF-LOCKER-P-5027-02



Paint Lockers 4 units (outside Bldg. 109)

SF-LOCKER-P-5032-02



Solvent Recycler (outside Bldg. 109)

SF-SOLVT-RYCL-5050-02



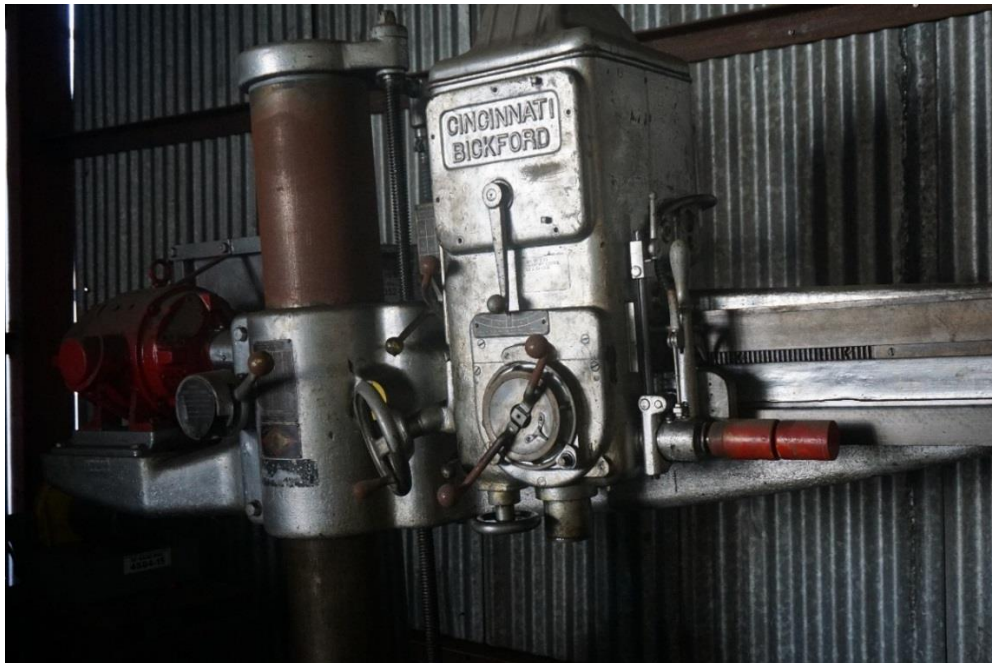
Universal Dry Blast Cabinet (Bldg. 36)

SF-BLST-SND-3050-03



Strands Drill Press (Bldg. 36)

SF-DRILL-PR-3350-03



Cincinnati Bickford-Supr Serv-Rad Arm Drill Press (Bldg. 38)

SF-DRILL-RA-3352-03



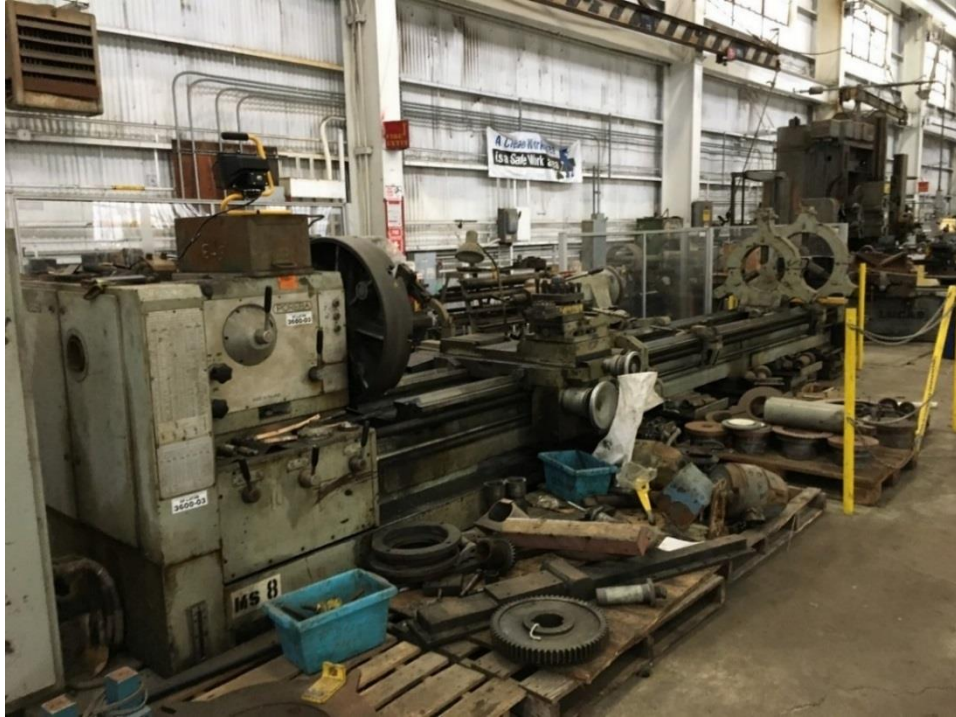
36-inch Blanchard Surface Grinder #75 (Bldg. 36)

SF-GRIND-S-3506-03



Large Standard Grinder (Bldg. 109)

SF-GRINDER-3507-03



Poreba Lathe (Bldg. 36)

SF-LATHE-3600-03



LeBlond 16-inch Heavy Duty Engine Lathe, Spindle Speed Low 16-71, med. 38-394, High 450-2000
(Bldg. 36)

SF-LATHE-3601-03



Universal Szerszamgepipari Murek Lathe (Bldg. 36)

SF-LATHE-3601-03



Wafum Wroclaw Lathe (Bldg. 36)

SF-LATHE-3604-03



Clausing-Colchester 15-inch Lathe (Bldg. 36)

SF-LATHE-3605-03



60-inch x 30-ft Niles Heavy Duty Forge Lathe #174 (Bldg. 36)

SF-LATHE-3606-03



Sharp Lathe (Bldg. 36)

SF-LATHE-3612-03



Bridgeport Horizontal Milling Machine (Bldg. 36)

SF-MILL-HOR-3700-03



Bridgeport Horizontal Milling Machine (Bldg. 36)

SF-MILL-HOR-3701-03



Lucas Precision Boring-Milling Machine (Bldg. 36)

SF-MILL-3704-03



KING 62" HEAVY DUTY VERTICAL BORING MILL (Bldg. 36)

SF-MILL-VER-3705-03



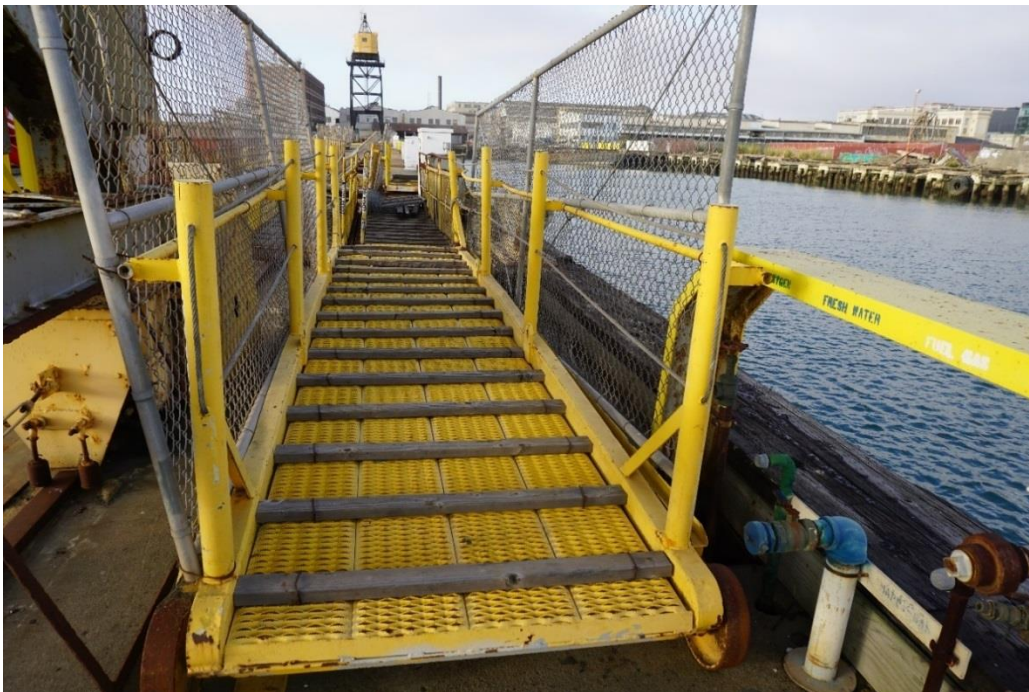
Rodgers Hydraulic Press #193 (Bldg. 36)

SF-PRES-HYD-4100-03



Famco Press (Bldg. 36)

SF-PRESS-4101-03



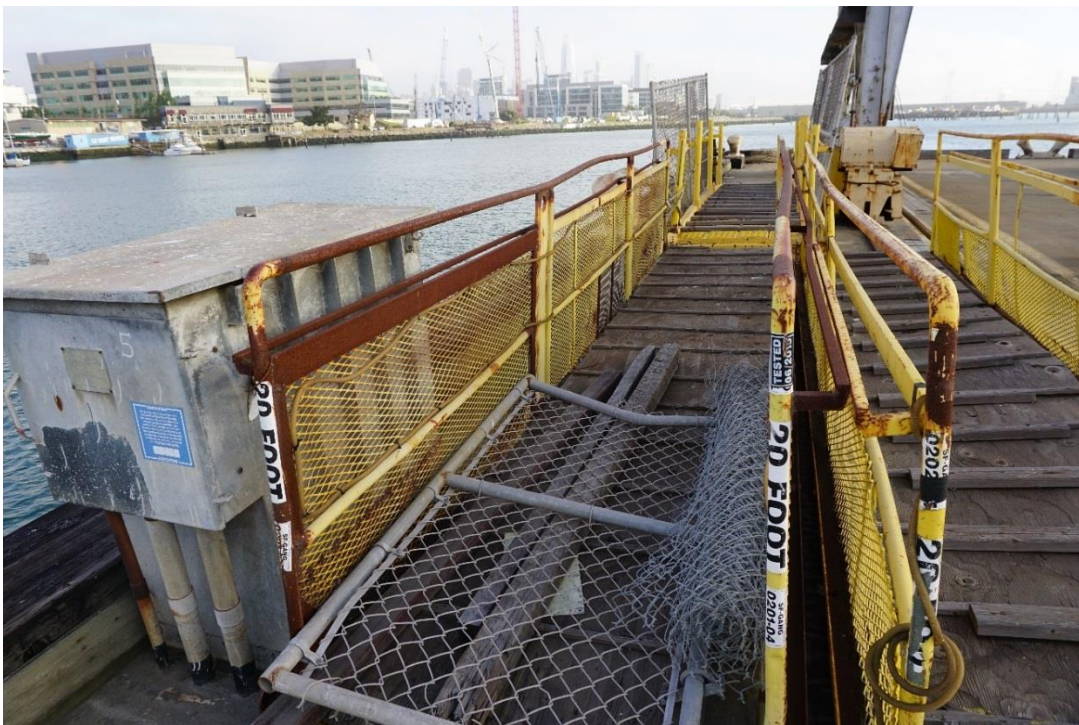
20 Ft. Gangway (Wharf 3)

SF-GANG-0200-04



20 Ft. Gangway (Wharf 3)

SF-GANG-0202-04



20 Ft. Gangway (Wharf 3)

SF-GANG-0201-04



20 Ft. Gangway (Wharf 3)

SF-GANG-0203-04



28 Ft. Gangway (Wharf 3)

SF-GANG-0204-04



30 Ft. Gangway (Wharf 3)

SF-GANG-0205-04



45 Ft. Gangway (Wharf 3)

SF-GANG-0207-04



60 Ft. Gangway (Wharf 3)

SF-GANG-0208-04



70 Ft Gangway (Wharf 3)

SF-GANG-0209-04



35 Ft. Gangway (Wharf 3)

SF-GANG-0210-04



50 Ft. Gangway (Wharf 3)

SF-GANG-0211-04



Pneumatic air hoists (6 TON x 4, 16 TON x 2, 25 TON x 6, 50 TON x 2) (Bldg. 111)
SF-HOIST-P-2337-04, SF-HOIST-P-2338-04, SF-HOIST-P-2339-04, SF-HOIST-P-2340-04, SF-HOIST-P-2341-04, SF-HOIST-P-2343-04, SF-HOIST-P-2344-04, SF-HOIST-P-2345-04, SF-HOIST-P-2346-04, SF-HOIST-P-2347-04, SF-HOIST-P-2348-04, SF-HOIST-P-2349-04, SF-HOIST-P-2350-04, SF-HOIST-P-2351-04, SF-HOIST-P-2352-04



Spreader Bar 45 Ton Capacity x 36 Feet (Wharf 3)

SF-SPRDR-BAR-4300-04



Spreader Bar 20 Ton Capacity X 21 Feet (Wharf 3)

SF-SPRDR-BAR-4301-04



Spreader Bar 15 Ton Capacity X 15 Feet (Bldg. 105)

SF-SPRDR-BAR-4302-04



Plate Pro Extreme CNC Plasma Cutting Machine (Bldg. 105)

SF-CUT-TBL-3201-05



Carlton 6-ft Arm on 15-inch Col. Radial Drill Press (Bldg. 105)

SF-DRILL-RA-3355-05



Buffalo Iron Worker / Punch No. 1 1/2 (Bldg. 105)

SF-IRON-WKR-4200-05



Kling Brothers Engineering Works- Roller, manufactured 10/1959 (Bldg. 105)

SF-ROLLER-4251-05



Wilson Belt Sander (Bldg. 38)

SF-SAND-BLT-4505-05



Sever-All Abrasive Cut-Off Saw (Bldg. 105)

SF-SAW-AB-4553-05



Wysong Shear (Bldg. 105)

SF-SHEAR-MC-4702-05



“Hydropower” 244-inch x ½-inch Shear (Bldg. 105)

SF-SHEAR-MC-4703-05



Silverado Sand Blast Cabinet (Bldg. 251)

SF-BLST-SND-3051-06



Landis 6" Pipe Threading Lathe (Bldg. 105)

SF-LATHE-3607-06



60-inch x 36-ft. Niles Heavy Duty Forge Lathe (Bldg. 105)

SF-LATHE-3608-06



Coast 6' Iron Pipe Bender (Bldg. 105)

SF-BNDR-PIP-3901-06



Pipe Bender #16 (Bldg. 105)

SF-BNDR-PIP-3902-06



Rotex Punch (Bldg. 105)

SF-PUNCH-4201-06



Niagara Circle Shear (Bldg. 105)

SF-SHEAR-CR-4704-06



Marvel Series 8 Band Saw (Bldg. 105)

SF-SAW-BND-4557-06



Marvel Series 8 Band Saw (Bldg. 105)

SF-SAW-BND-4558-06



Besly Wire Wheel Buffer #41 (Bldg. 105)

SF-WIRE-WHL-5035-06



Boat #1 (Storage Area East of Bldg 111)

SF-VEH-BOA-1011-09



Boat #2 (Storage Area East of Bldg 111)

SF-VEH-BOA-1012-09



Hyster Forklift #333 29500K-D (yard area between bldg 109 & 105)

SF-FORK-2791-11



CAT GP40K-LP FORKLIFT #813 (bldg. 109)

SF-FORK-2766-11



CAT P10000-LP FORKLIFT #817 (Storage Area East of Bldg 111)

SF-FORK-2790-19



1000LB 40' SPIDER BASKET #1 (Attached to West Side of DD. 2)

SF-SPIDER-5037-11



1000LB 40' SPIDER BASKET #2 (Attached to West Side of DD. 2)

SF-SPIDER-5038-11



Packard Precision Heavy Duty Drill Press (Bldg. 108 Second Floor)

SF-DRILL-PR-3361-12



Oliver 24" Motor-Head Wood Turning Lathe W/14' Bed (Bldg. 108 Second Floor)

SF-LATHE-3610-12



Oliver Planer #1 (Bldg. 108 second floor)

SF-PLANER-4050-12



Band Saw (second floor of Bldg. 108)

SF-SAW-BND – 4565-12



Yates American – Band Saw (second floor of Bldg. 108)

SF-SAW-BND-4564-12



Table Saw (second floor of Bldg. 108)

SF-SAW-TBL-4574-12



Radial Saw (second floor of Bldg. 108)

SF-SAW-RAD-4572-12



50 x 10 Cincinnati Mechanical Press Brake (Bldg. 109)

SF-PRES-MCB-3152-15



50-inch x 10 Cincinnati Mechanical Press Brake (Bldg. 109)

SF-PRES-MCB-3153-15



Belt Grinder #29 (Bldg. 109)

SF-GRIND-BT-3520-15



Large Standard Grinder (Bldg. 36)

SF-GRINDER-3525-15



Buffalo Ironworker Punch #1/2 (Bldg. 109)

SF-IRON-WKR-4202-15



W. A. Whitney Duplicator Punch (Bldg. 109)

SF-PUNCH-4204-15



Buffalo Punch #39 (Bldg. 109)

SF-PUNCH-4205-15



Square Punch #20

SF-PUNCH-4206-15



Do-ALL Band Saw #34 (Bldg. 109)

SF-SAW-BND-4575-15



Cincinnati Shear #44 (Bldg. 109)

SF-SHEAR-MC-4709-15



Pullmax Universal Shearing-Forming Machine #37. Capacity 10 GA (Bldg. 109)

SF-SHEAR-MC-4710-15



Electric Shear #32. Capacity 10 GA (Bldg. 109)

SF-SHEAR-MC-4711-15



Doall Buttwelder / Grinder / Shear Cutter (Bldg.105)

SF-WELDER-SPT-5008-15



Flagler Pittsburg Lock Forming Machine (Bldg. 109)

SF-LOCK-MCH-5012-15



Flagler Pittsburg Lock Forming Machine (Bldg. 109)

SF-LOCK-MCH-5013-15



Rotex Punch (Bldg. 109)

SF-PUNCH-4203-15



ACME Spot Welder #2 (Bldg. 109)

SF-WELDER-SPT-5016-15



Singer Industrial Sewing Machine

SF-SEWING-5004-18



Artisan Heavy Duty Stitching Machine

(No ID)



Diesel Generator 480V-300 AMP for DD #2

SF-GEN-DSL-2701-19

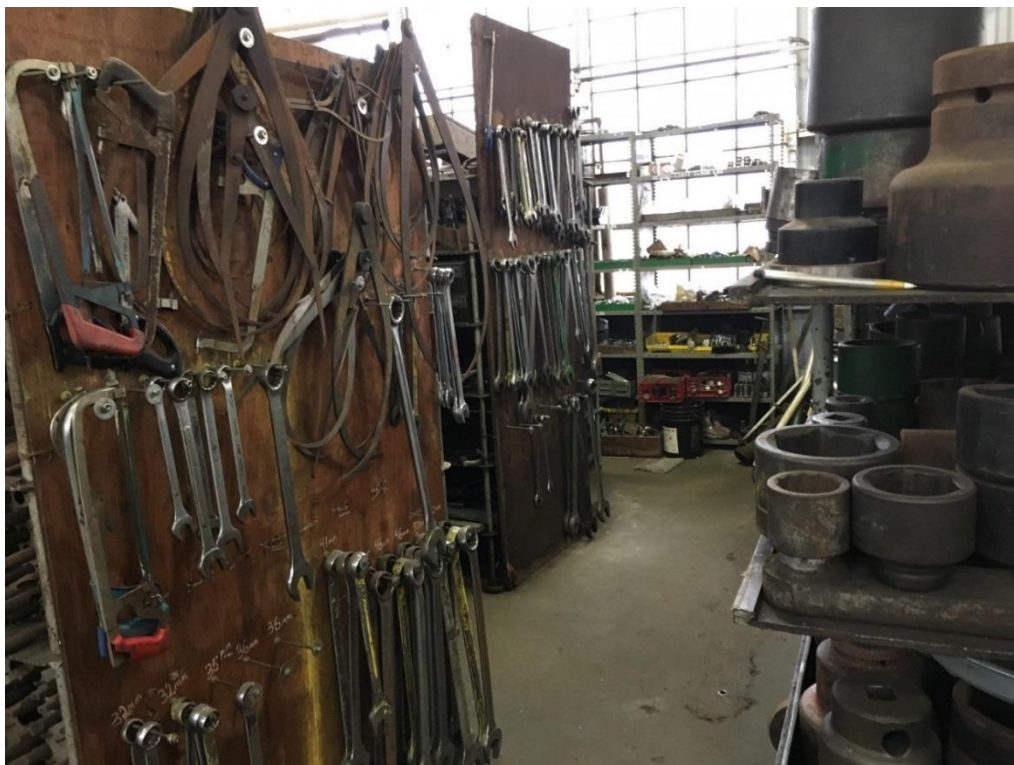


Caterpillar XQ300 Diesel Generator - 300KW (Yard)

SF-GEN-DSL-2702-19



Miscellaneous tools (drill bits, wrenches, sockets, etc.) in Bldg. #36



Miscellaneous tools (drill bits, wrenches, sockets, etc.) in Bldg. 36



Inside Bldg #111 (chain hoists, etc.)



Inside Bldg. 111 (mooring lines)



Inside Bldg. #109 (manual rigging equipment, miscellaneous sizes)



Heavy Metal & Dirty Water Separation Tanks near Bldg. 68



Heavy Metal & Dirty Water Separation Tanks near Bldg. 68



Oil – Water Separator – BW systems, PS International 2015 (near Drydock #2)



Cooling Tower Tanks -2 units (back of Bldg. 108)



Sand Silos (3 units, largest unit is 90-ton capacity) outside Bldg. 251



Sand Blast Equipment (inside Bldg. 251)



Sand Blast Booth (Bldg. 251) Dehumidifier



Utility Fan (Bldg. 108)



Central Dust Collector (Bldg. 103)