

Port of San Francisco Pier 31 Utilities and Restroom Project



Contract No. 2783

May 16, 2017



City and County of San Francisco
PORT OF SAN FRANCISCO

PIER 31 UTILITIES AND RESTROOM PROJECT

CONTRACT NO. 2783

ADVERTISE: May 8, 2017
PRE-BID MEETING: May 16, 2017
BIDS OPEN: June 6, 2017

PROJECT MANUAL

(Division 00)

05/2017



Each Bid shall be enclosed in an envelope bearing the description:
"BID FOR PIER 31 UTILITIES AND RESTROOM PROJECT (Port of San Francisco Contract No. 2783)".

Vision: To Make San Francisco a beautiful, livable, vibrant and sustainable City.



Printed on 30% post-consumer recycled stock

Contract No. 2783

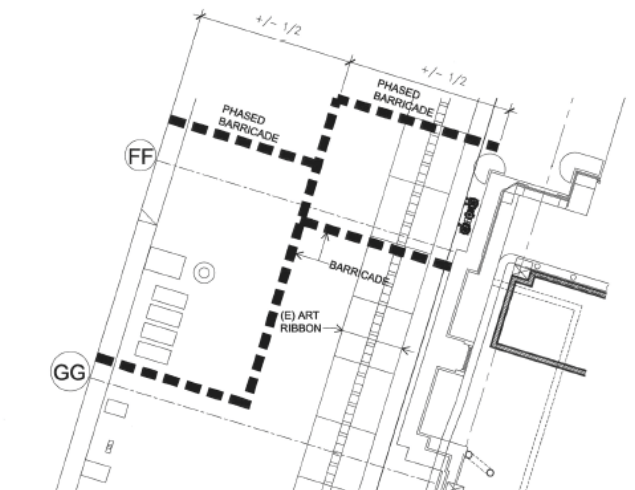
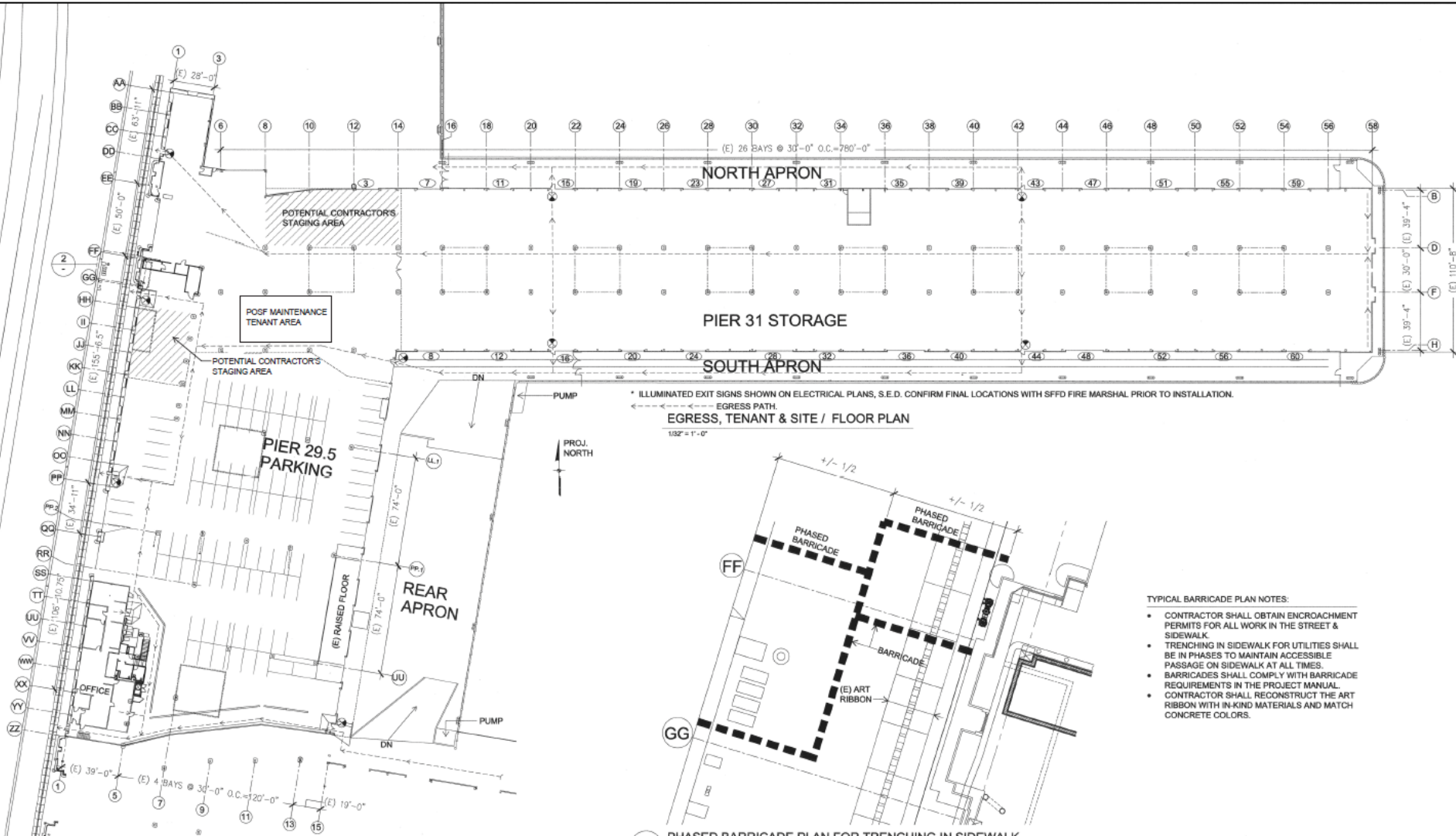
Pier 31 Utilities and Restroom Project

PRE - BID Presentation

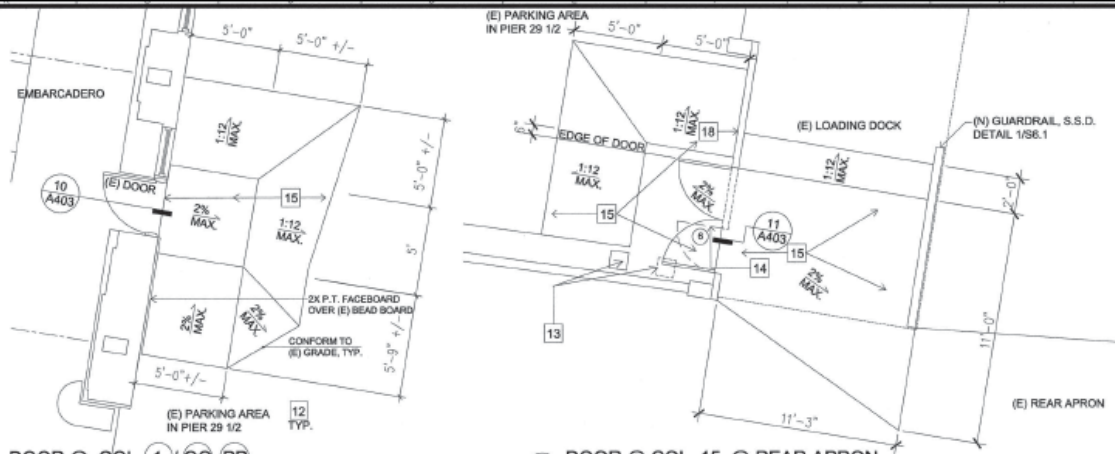
May 16, 2017

1. Welcome & Introductions
2. Project Overview – Wendy Proctor/ Alan Gin
3. CMD – Finbarr Jewell
4. Highest Prevailing Wage – Robin Ho / Cynthia Torres
5. Local Hire – Joyce Wong
6. Partnering
7. Bid Documents
8. Questions

PROJECT OVERVIEW

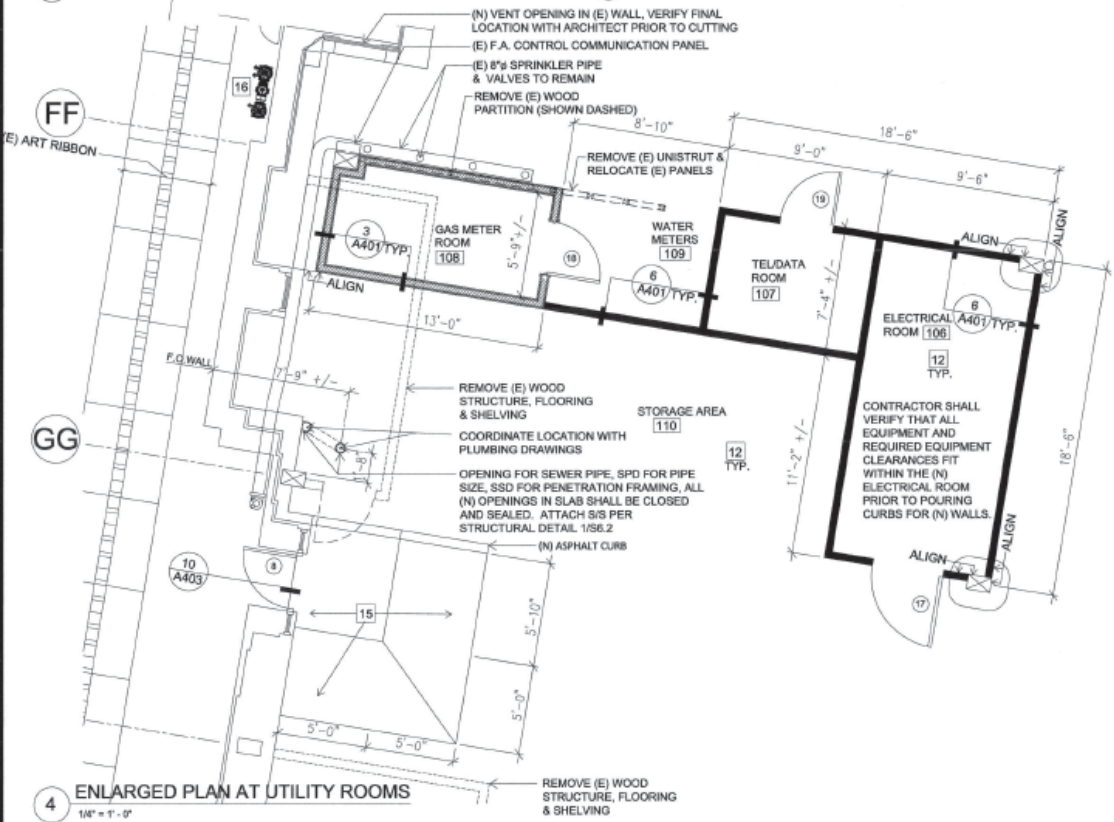


- TYPICAL BARRICADE PLAN NOTES:**
- CONTRACTOR SHALL OBTAIN ENCROACHMENT PERMITS FOR ALL WORK IN THE STREET & SIDEWALK
 - TRENCHING IN SIDEWALK FOR UTILITIES SHALL BE IN PHASES TO MAINTAIN ACCESSIBLE PASSAGE ON SIDEWALK AT ALL TIMES.
 - BARRICADES SHALL COMPLY WITH BARRICADE REQUIREMENTS IN THE PROJECT MANUAL.
 - CONTRACTOR SHALL RECONSTRUCT THE ART RIBBON WITH IN-KIND MATERIALS AND MATCH CONCRETE COLORS.

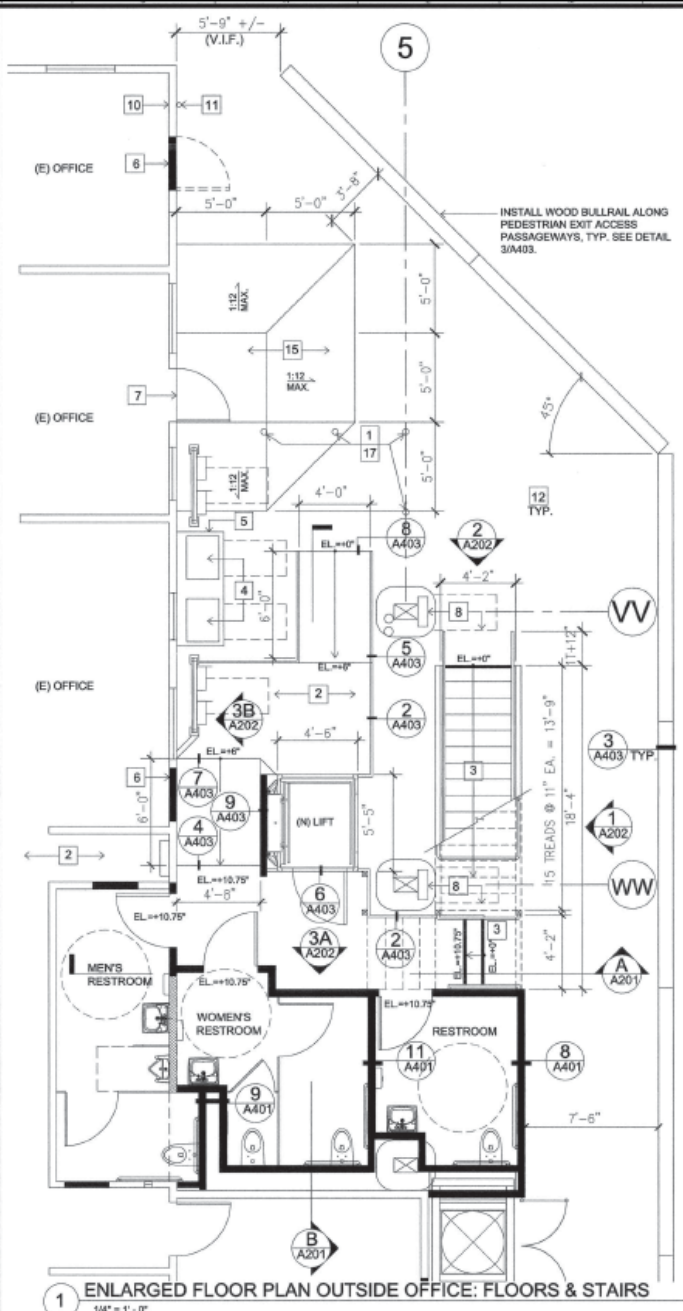


3 DOOR @ COL. 1
1/4" = 1'-0"

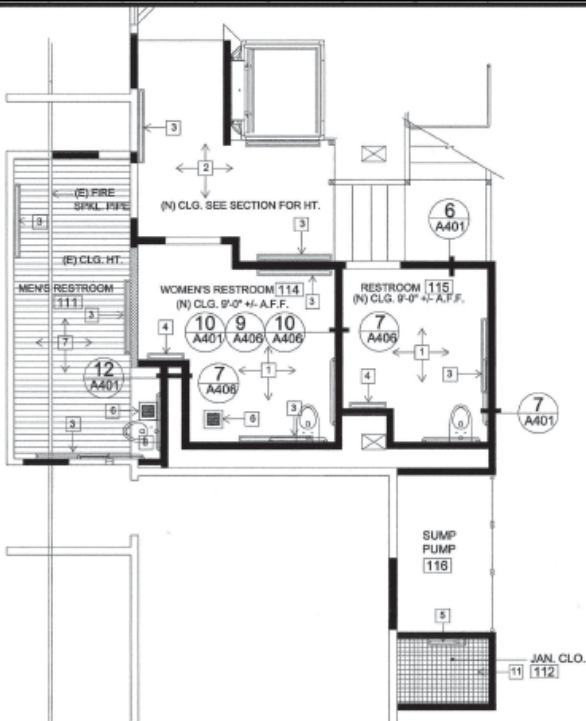
2 DOOR @ COL. 15 @ REAR APRON
1/4" = 1'-0"



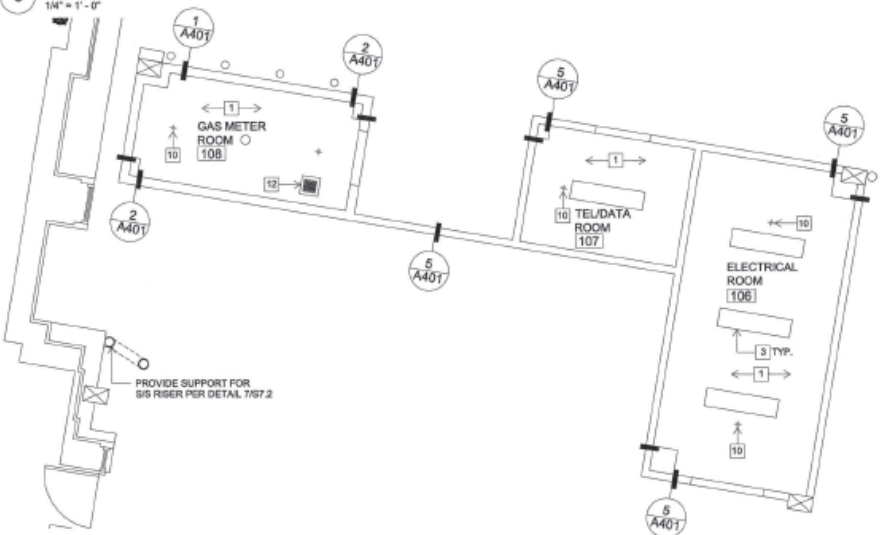
4 ENLARGED PLAN AT UTILITY ROOMS
1/4" = 1'-0"



1 ENLARGED FLOOR PLAN OUTSIDE OFFICE: FLOORS & STAIRS
1/4" = 1'-0"



3 FIRST FLOOR RESTROOM / REFLECTED CEILING PLAN
1/4" = 1'-0"



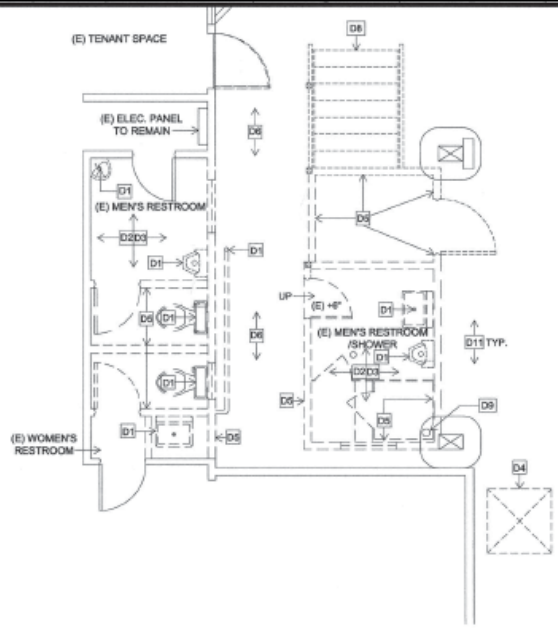
4 UTILITY ROOMS REFLECTED CEILING PLAN
1/4" = 1'-0"

REFLECTED CEILING NOTES

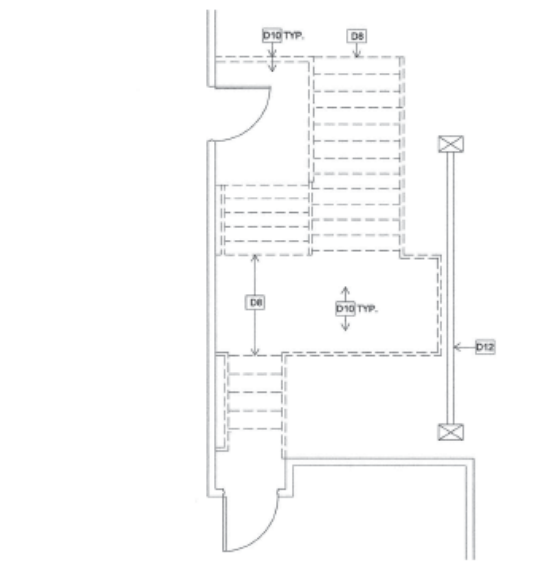
- GENERAL NOTE: VERIFY LOCATIONS OF LIGHT FIXTURES WITH PROJECT ARCHITECT PRIOR TO INSTALLATION.
1. NEW GYP BD. CEILING. SEE PLAN FOR CLG HT.
 2. NEW SMOOTH SURFACE PLYWOOD CEILING FINISH.
 3. NEW 48" LIGHT FIXTURE, S.E.D.
 4. NEW 24" LIGHT FIXTURE, S.E.D.
 5. NEW 18" LIGHT FIXTURE, S.E.D.
 6. NEW EXHAUST FAN GRILLE, SEE S.M.D.
 7. EXISTING BEAD BOARD CEILING, PATCH CEILING WITH IN KIND MATERIALS WHERE WALLS WERE REMOVED.
 8. NEW GYP BOARD SOFT.
 9. NEW 48" LINEAR LIGHT FIXTURE, S.E.D.
 10. NEW FIRE SPRINKLER HEAD, S.P.D.
 11. WW MESH OVER EXPOSED CEILING JOISTS.
 12. NEW 1 1/2 HR. FIRE DAMPER/EXHAUST GRILLE. SEE DETAIL 40A-401 & S.M.D.

RCP LEGEND

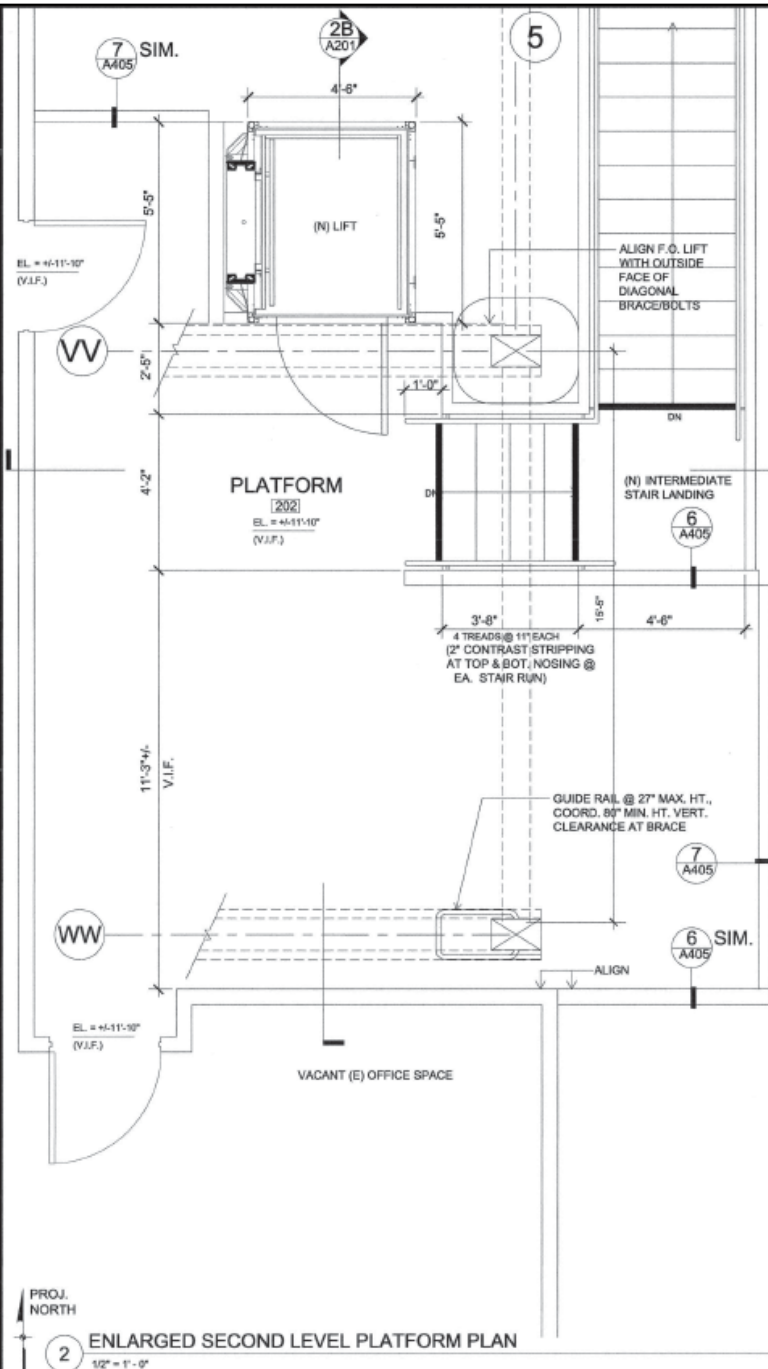
- (N) WALL MOUNTED LIGHT FIXTURE, S.E.D.
- (N) SURFACE MOUNTED LIGHT FIXTURE, S.E.D.
- (N) SURFACE MOUNTED LIGHT FIXTURE, S.E.D.
- (N) CEILING MOUNTED LIGHT FIXTURE, S.E.D.
- (N) CEILING EXHAUST FAN, S.M.D.
- (N) EXHAUST THRU ROOF, S.M.D.
- EXISTING PARTITION
- NEW PARTITION
- (N) FIRE SPRINKLER HEAD, S.P.D.



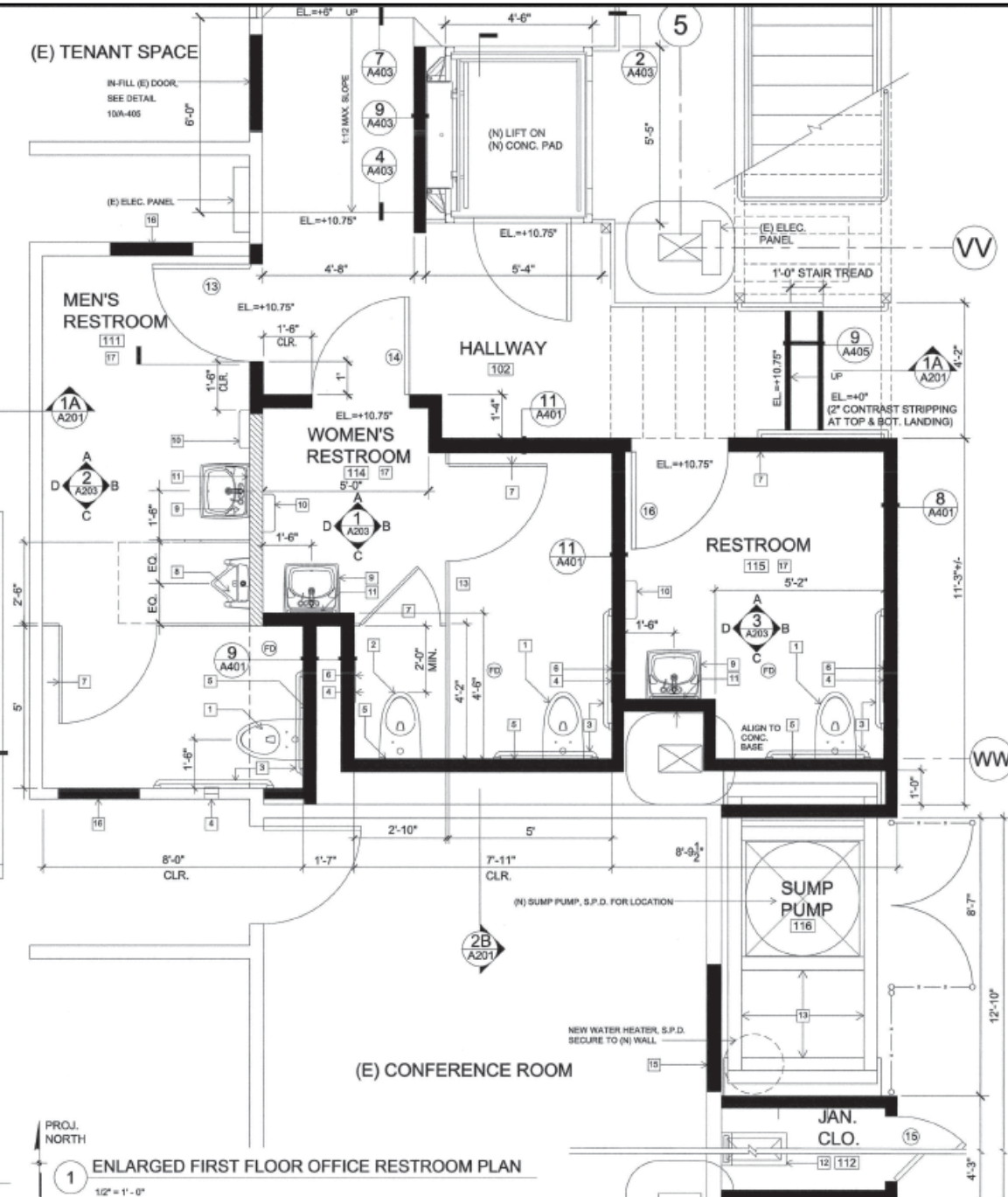
1 FIRST FLOOR RESTROOM DEMOLITION PLAN
1/4" = 1'-0"



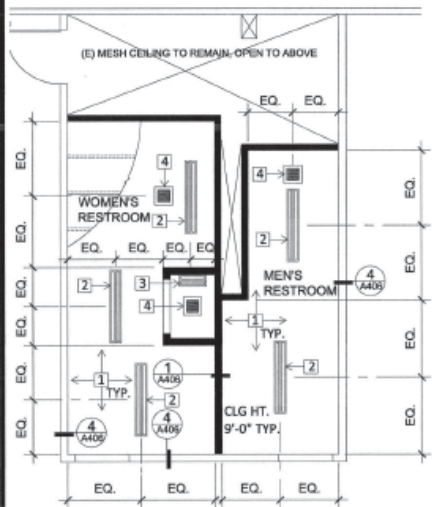
2 SECOND FLOOR RESTROOM DEMOLITION PLAN
1/4" = 1'-0"



(2) ENLARGED SECOND LEVEL PLATFORM PLAN
1/2" = 1'-0"



(1) ENLARGED FIRST FLOOR OFFICE RESTROOM PLAN
1/2" = 1'-0"



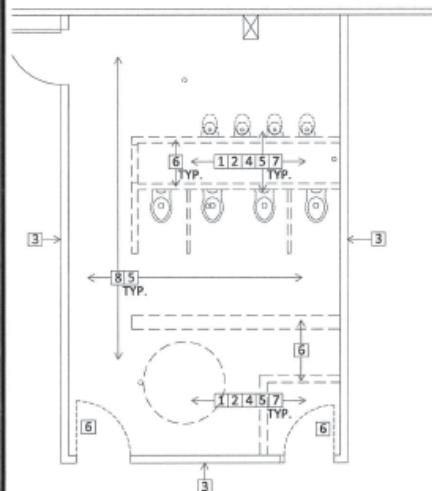
2 REFLECTED CEILING PLAN
1/4" = 1' - 0"

REFLECTED CEILING NOTES

1. (N) CLG. JOISTS @ 24" O.C. AND GYP BO CEILING (5'-0" A.F.F.), PAINT.
2. (N) 48" LINEAR SURFACE MOUNTED CLG. LIGHT FIXTURE, S.E.D.
3. (N) 24" LIN. SURFACE MOUNTED CLG. LIGHT FIXTURE, S.E.D.
4. (N) EXHAUST FAN, S.M.D.

RCP LEGEND

- (N) SURFACE MOUNTED CLG. LIGHT FIXTURE, S.E.D.
- (N) CEILING EXHAUST FAN, S.M.D.



3 RESTROOM DEMOLITION PLAN
1/4" = 1' - 0"

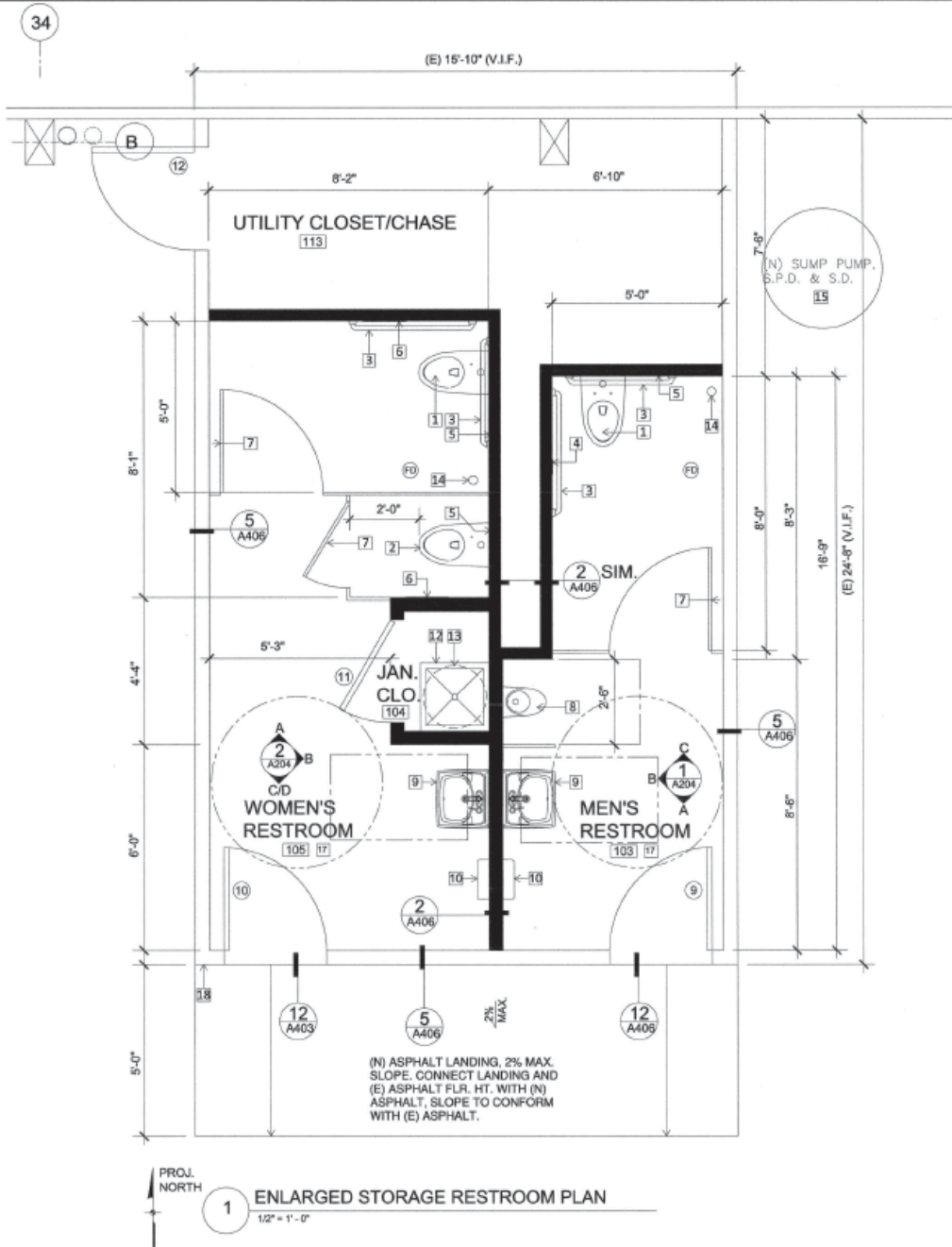
DEMOLITION SHEET NOTES

HAZARDOUS MATERIAL GENERAL NOTE:
CONTRACTOR SHALL PERFORM WORK THROUGHOUT PROJECT WORK AREAS IN A MANNER THAT CONFORMS WITH CAL/OSHA CONSTRUCTION SAFETY ORDERS-LEAD, SECTION 1532.1, TITLE 8; CALIFORNIA CODE OF REGULATIONS AND THE CALIFORNIA DEPARTMENT OF PUBLIC HEALTH (CDPH) TITLE 17, AND THE SAN FRANCISCO EXTERIOR LEAD-BASED PAINT ORDINANCE WHERE REMOVAL, REPAIRS, OR WORK DISTURBS SURFACES COATED WITH LBP AND LCP.

1. REMOVE AND CAP ALL ASSOCIATED SANITARY SEWER, SUPPLY AND VENT PIPES, FLOOR DRAINS, AND CONDUITS. RE-USE EXISTING OPENINGS AND PENETRATIONS TO THE GREATEST EXTENT POSSIBLE FOR NEW CONDUIT AND PLUMBING. PATCH AND REPAIR ALL RESULTING HOLES IN CEILINGS, WALLS AND FLOORS WITH IN-KIND MATERIALS.
2. REMOVE AND/OR RELOCATE EXISTING WATER LINES, CONDUITS AND OTHER SIMILAR UTILITIES WHERE SUCH ITEMS CONFLICT WITH THE NEW CONFIGURATION.
3. SHOR (E) WALLS TO INSTALL (N) CONC CURBS. COORDINATE WITH PARTITION DETAILS.
4. REMOVE ALL PLUMBING FIXTURES, SEPARATING PARTITIONS AND PLUMBING CHASE IN (E) RESTROOM. FIXTURES INCLUDE BUT ARE NOT LIMITED TO TOILETS, URINALS, COMMUNAL SINK, AND WATER HEATER.
5. REMOVE ALL EXISTING LIGHT FIXTURES AND EXHAUST FANS IN AREA OF WORK
6. REMOVE EXISTING WALLS, DOORS AND FRAMES, SHOWN DASHED IN THE AREA OF WORK. COORDINATE WITH INTERIOR ELEVATIONS FOR EXTENT IN SOME CONDITIONS.
7. CONTRACTOR SHALL USE LEAD PAINT CONTAINMENT PROTOCOLS WHERE DEMOLITION OR WORK DISRUPTS MATERIALS THAT CONTAIN LEAD PAINT.
8. REMOVE (E) CONCRETE & ASPHALT FLOORING TO PIER DECK. COORDINATE WITH THE (N) LAYOUT FOR EXTENT OF (N) FLOORING & CONC. CURBS.

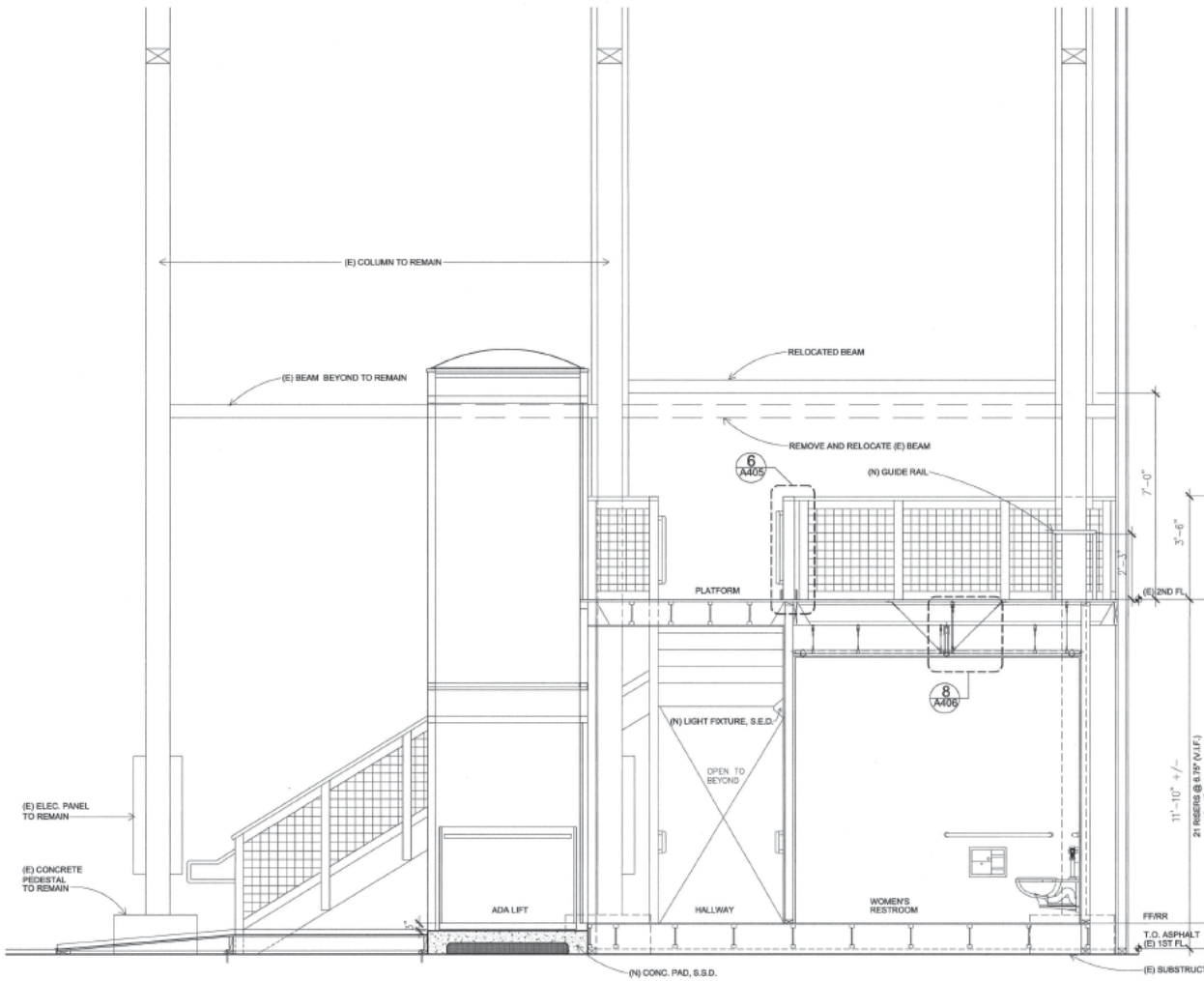
DEMOLITION LEGEND

- MATERIAL TO BE REMOVED
- (E) MATERIAL TO REMAIN
- (E) WINDOW TO BE REMOVED
- (E) DOOR TO BE REMOVED

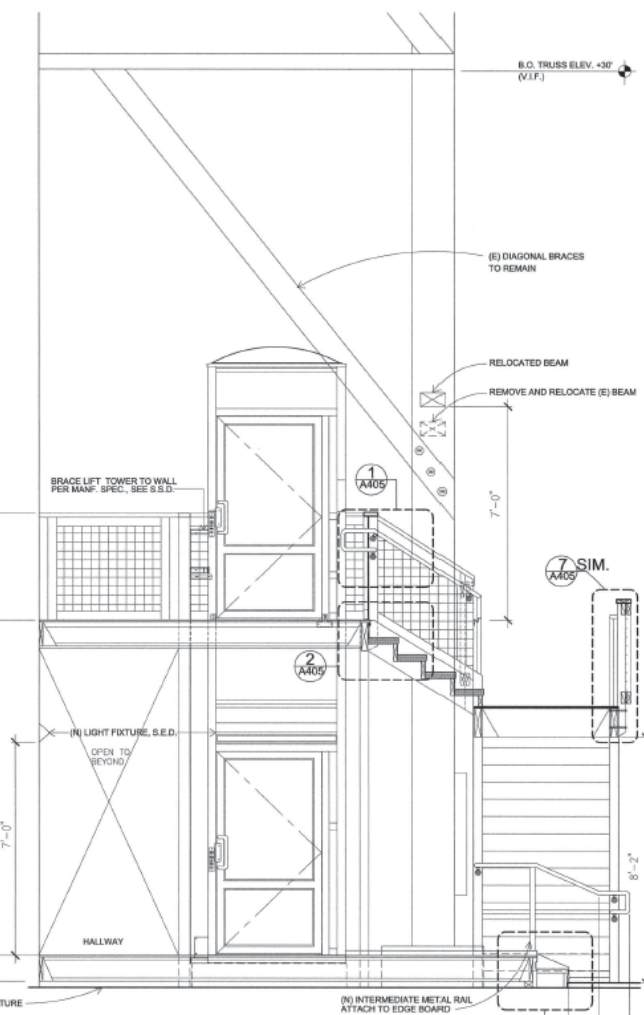


1 ENLARGED STORAGE RESTROOM PLAN
1/2" = 1' - 0"

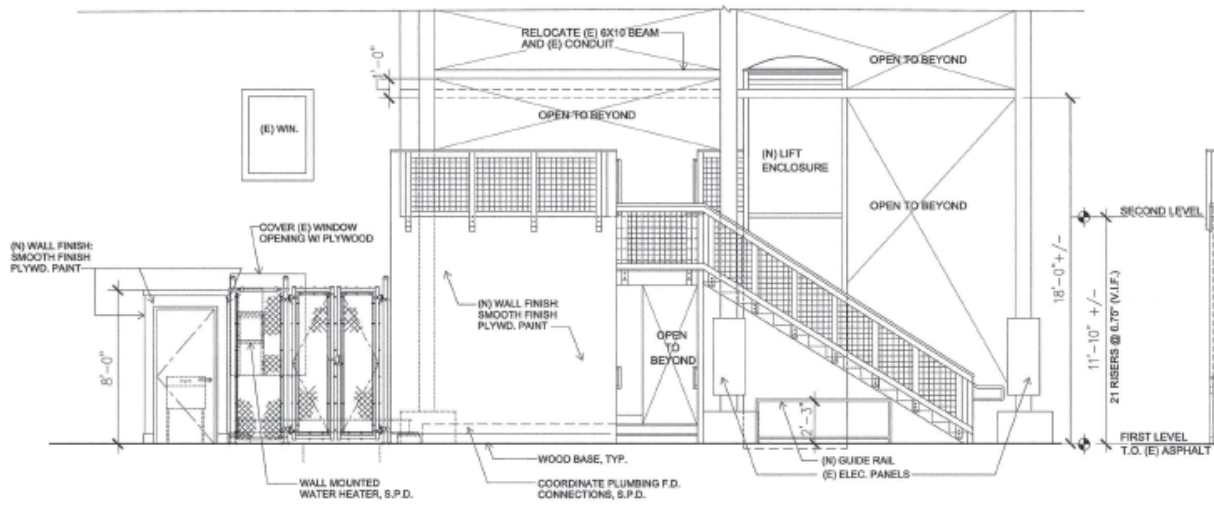




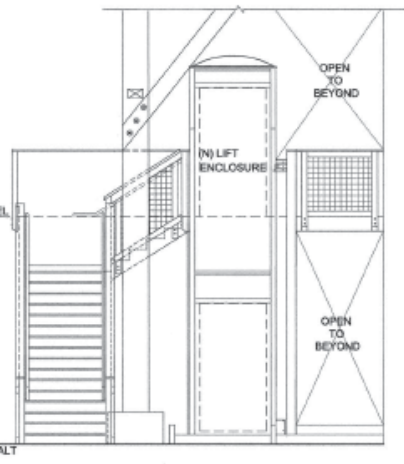
2 SECTION B
1/2" = 1'-0"



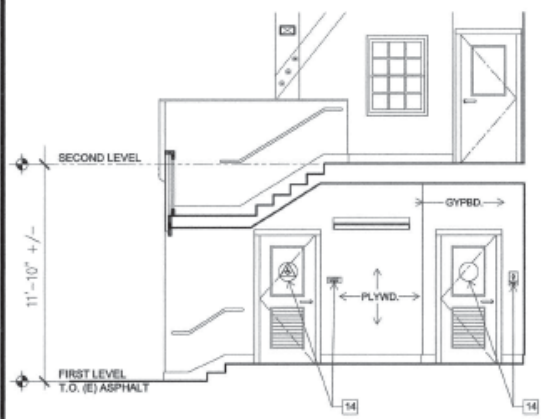
1 SECTION A
1/2" = 1'-0"



1 PARTIAL ELEVATION AT STAIR & LIFT
1/4" = 1' - 0"



2 PARTIAL ELEVATION AT STAIR & LIFT
1/4" = 1' - 0"



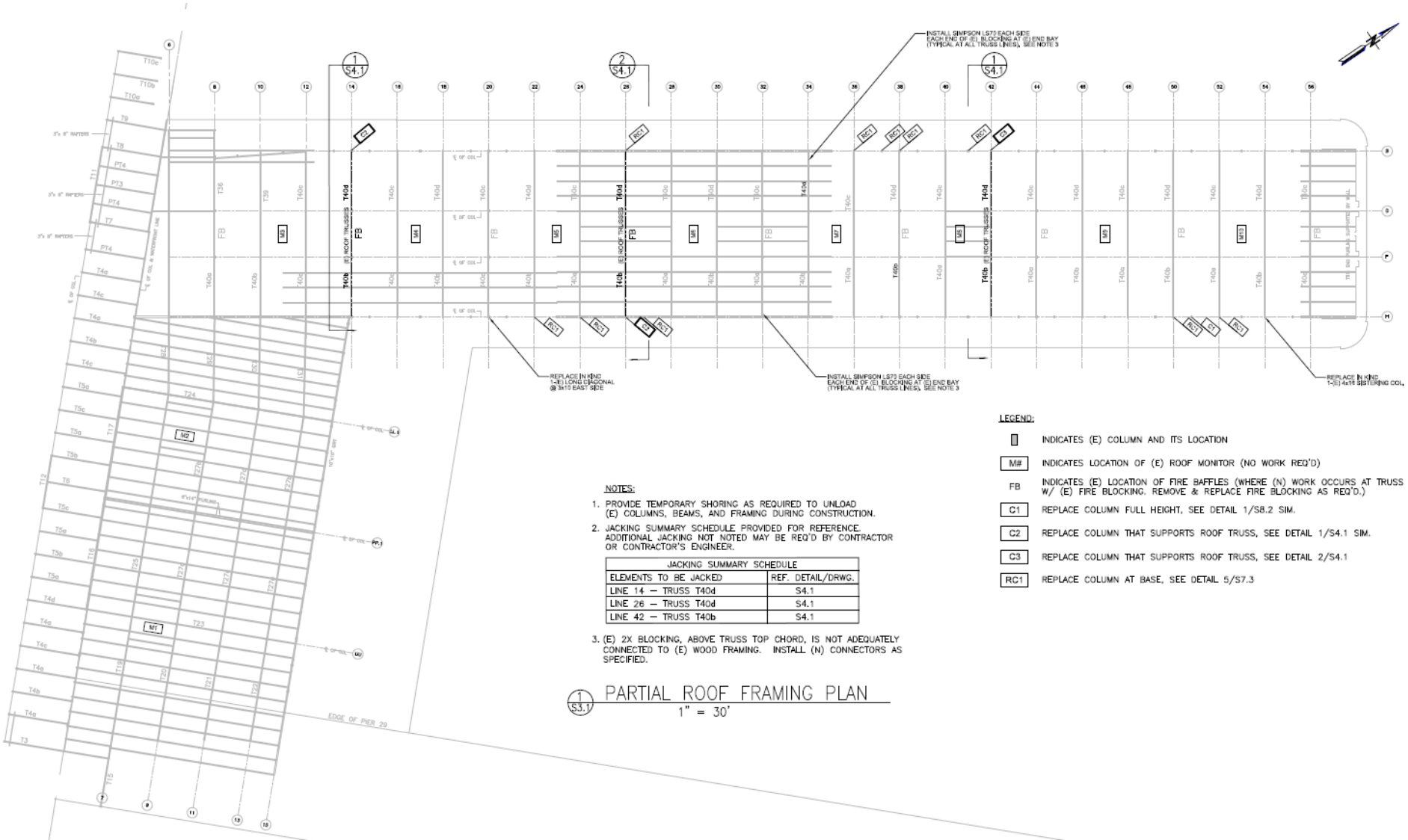
A SOUTH EXT. OFFICE & RR ELEV.



B WEST EXTERIOR OFFICE & RR ELEVATION

PAIN (N) & (E) WALL SURFACES, DOOR & WINDOW TRIM & FRAMES, COLUMNS, COL. BASES, STAIR STRINGERS, TREADS, & RAILINGS, ETC FROM FLOOR TO S.O. TRIM OR TO AREA OF WORK, WHICH EVER IS GREATER. 3 COLOR SELECTIONS MIN.

3 OFFICE RESTROOMS HALLWAY ELEVATIONS
1/4" = 1' - 0"



NOTES:

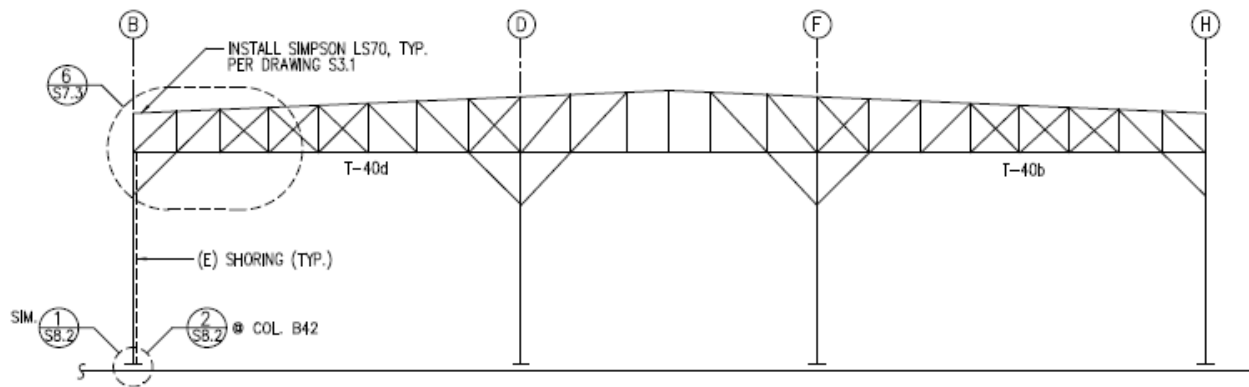
1. PROVIDE TEMPORARY SHORING AS REQUIRED TO UNLOAD (E) COLUMNS, BEAMS, AND FRAMING DURING CONSTRUCTION.
2. JACKING SUMMARY SCHEDULE PROVIDED FOR REFERENCE. ADDITIONAL JACKING NOT NOTED MAY BE REQ'D BY CONTRACTOR OR CONTRACTOR'S ENGINEER.
3. (E) 2X BLOCKING, ABOVE TRUSS TOP CHORD, IS NOT ADEQUATELY CONNECTED TO (E) WOOD FRAMING. INSTALL (N) CONNECTORS AS SPECIFIED.

JACKING SUMMARY SCHEDULE	
ELEMENTS TO BE JACKED	REF. DETAIL/DRWG.
LINE 14 - TRUSS T40d	S4.1
LINE 26 - TRUSS T40d	S4.1
LINE 42 - TRUSS T40b	S4.1

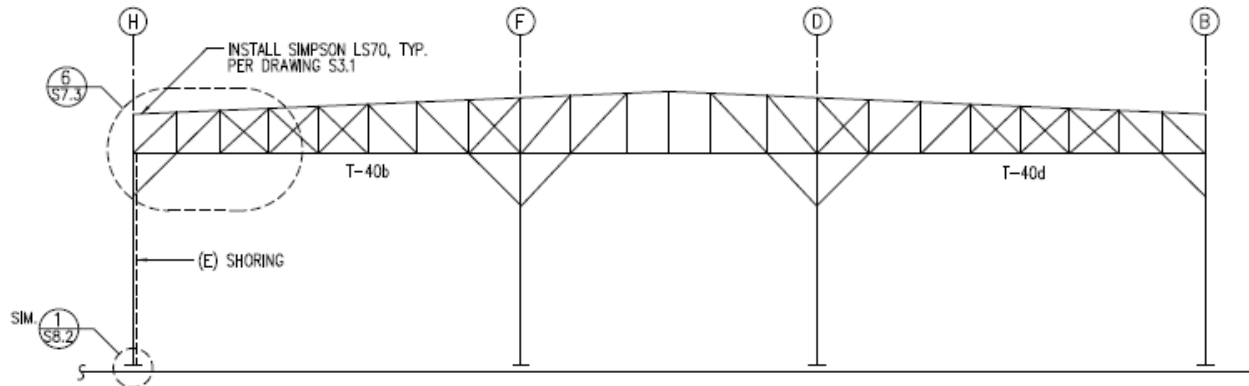
LEGEND:

- INDICATES (E) COLUMN AND ITS LOCATION
- M# INDICATES LOCATION OF (E) ROOF MONITOR (NO WORK REQ'D)
- FB INDICATES (E) LOCATION OF FIRE BAFFLES (WHERE (N) WORK OCCURS AT TRUSS W/ (E) FIRE BLOCKING. REMOVE & REPLACE FIRE BLOCKING AS REQ'D.)
- C1 REPLACE COLUMN FULL HEIGHT, SEE DETAIL 1/S8.2 SIM.
- C2 REPLACE COLUMN THAT SUPPORTS ROOF TRUSS, SEE DETAIL 1/S4.1 SIM.
- C3 REPLACE COLUMN THAT SUPPORTS ROOF TRUSS, SEE DETAIL 2/S4.1
- RC1 REPLACE COLUMN AT BASE, SEE DETAIL 5/S7.3

PARTIAL ROOF FRAMING PLAN
1" = 30'



① (E) TRUSS @ LINE 14 & 42 (T40b & T40d)
 S4.1 1/8" = 1'-0"



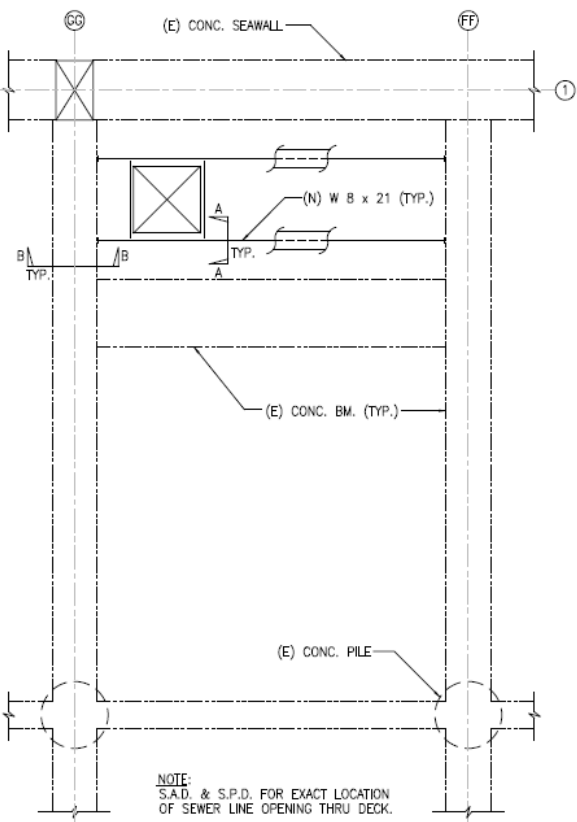
② (E) TRUSS @ LINE 26 (T40b & T40d)
 S4.1 1/8" = 1'-0"

GENERAL NOTES:

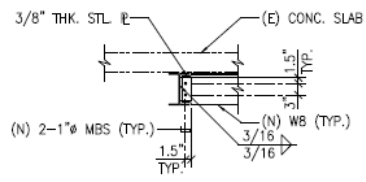
1. CONTRACTOR SHALL NOT PLACE ANY ROOF LIVE LOAD WITHIN TRIBUTARY AREAS OF ROOF TRUSSES SCHEDULED FOR REPAIR, DURING REPAIR WORK UNLESS NOTED OTHERWISE.
2. ALL PROPOSED SHORING & JACKING FOR THIS PROJECT SHALL BE ENGINEERED BY A LICENSED CA. PROFESSIONAL CIVIL/STRUCTURAL ENGINEER, SUBMIT STAMPED, SIGNED SHORING & JACKING STRUCTURAL CALCULATIONS AND PLANS TO PORT ENGINEER FOR THEIR REVIEW & APPROVAL. ENGINEER SHALL CHECK & CONFIRM (E) TRUSS, BEAMS & SUBSTRUCTURE ARE STRUCTURALLY SOUND DUE TO ADDED JACKING LOADS.
3. RELOCATE (E) UTILITIES AS REQ'D FOR REPAIR WORK.

SUGGESTED CONSTRUCTION SEQUENCE – T40b & T40d TRUSS REPAIR

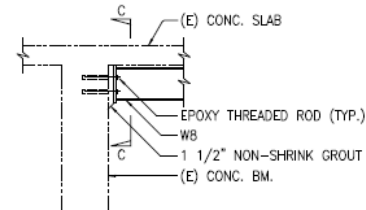
1. SHORE EXISTING ROOF FRAMING AND DECKING SUPPORTED BY TRUSSES.
2. REMOVE (E) SHORING UNDER T40b/T40d TRUSSES.
3. JACK TRUSS T40b/T40d AS REQ'D.
4. PERFORM REPAIRS AS NOTED ON DRAWINGS.
5. (E) OR (N) ROOF FRAMING & DECKING MAY NEED TO BE REINSTALLED DUE TO JACKING.
6. REMOVE NEWLY INSTALLED SHORING AND JACKS.



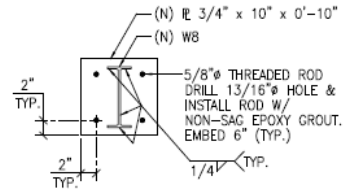
1 SUBSTRUCTURE OPENING PLAN DETAIL
3/4" = 1'-0"



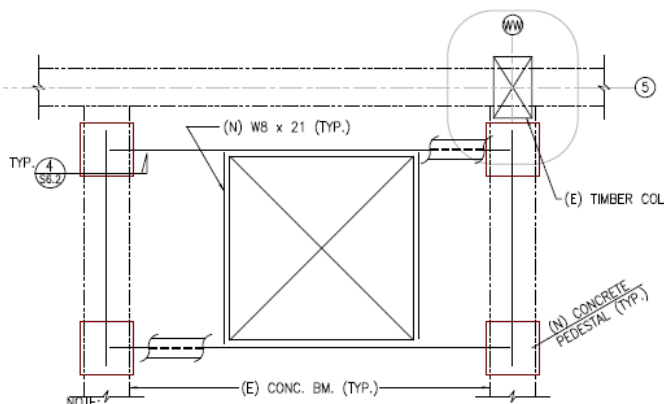
SECTION A-A
3/4" = 1'-0"



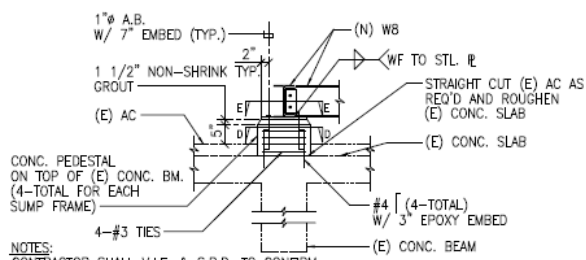
SECTION B-B
3/4" = 1'-0"



SECTION C-C
1 1/2" = 1'-0"

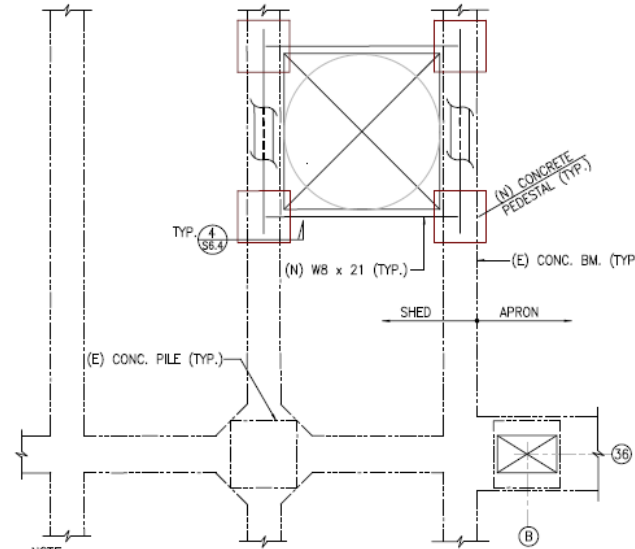


2 SUBSTRUCTURE OPENING PLAN DETAIL
3/4" = 1'-0"

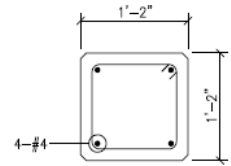


- NOTES:
- CONTRACTOR SHALL V.I.F. & S.P.D. TO CONFIRM. 5" CLEARANCE BETWEEN B.O.S. & T.O. ASPHALT. PORT ENGINEER SHALL BE NOTIFIED OF ANY VARIANCE.
 - REINSTALL FULL DEPTH OF AC AS REQ'D.
 - CHAMFER CONCRETE PEDESTAL CORNERS.

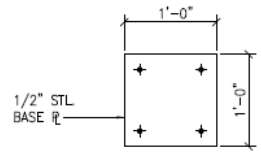
4 SUMP FRAME AND PEDESTAL SECTION
3/4" = 1'-0"



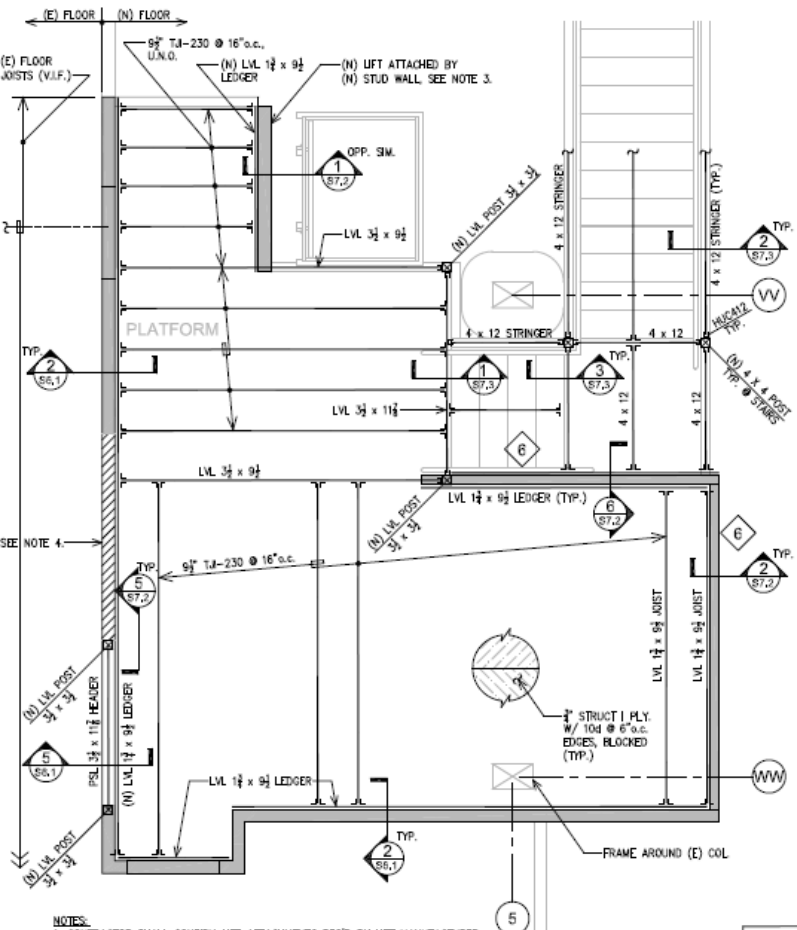
3 SUBSTRUCTURE OPENING PLAN DETAIL - ALT. BID
3/4" = 1'-0"



SECTION D-D
1 1/2" = 1'-0"

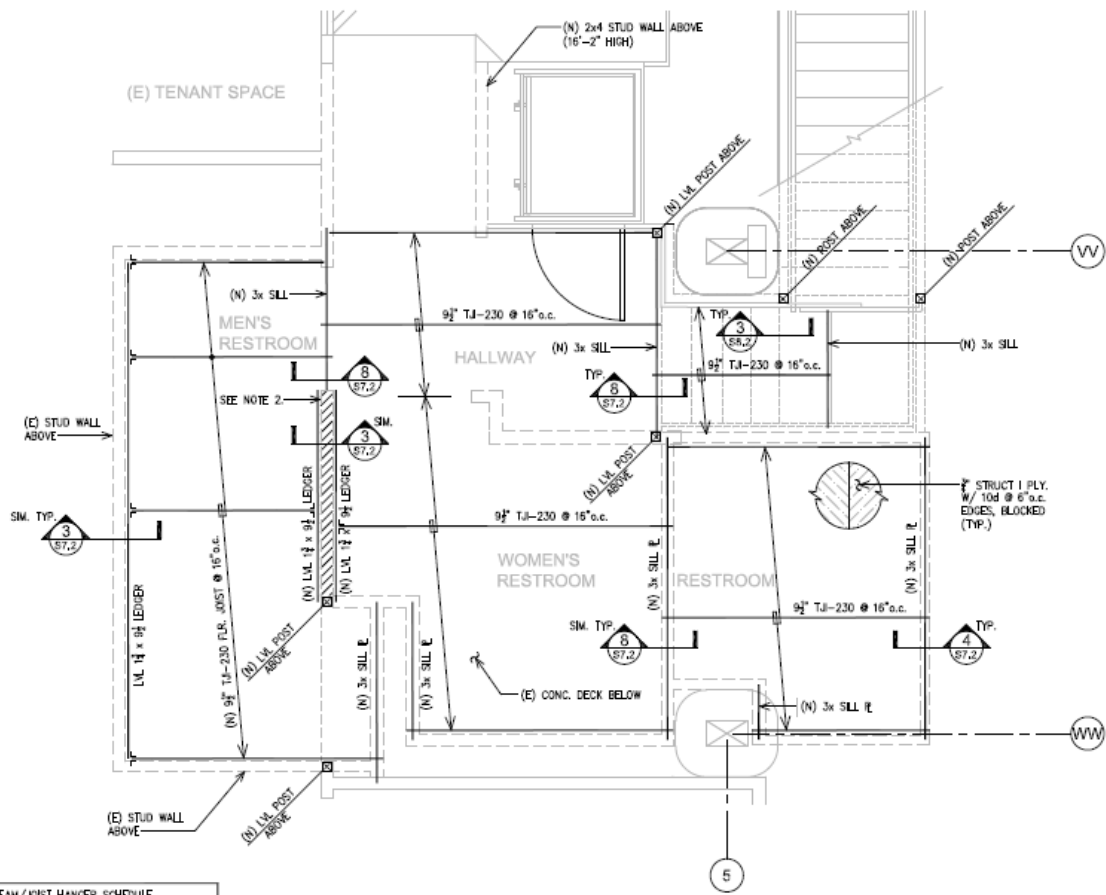


SECTION E-E
1 1/2" = 1'-0"



- NOTES:**
- CONTRACTOR SHALL CONFIRM LIFT ATTACHMENTS REQ'D BY LIFT MANUFACTURER.
 - REFER TO A-104 FOR INFORMATION NOT SHOWN.
 - (N) LIFT S.A.D. & SPECIFICATIONS FOR LIFT DATA SHEET. CONNECT LIFT @ 15'-11" ± V.I.F. TO (N) STUD WALL. SUBMIT PROPOSED LIFT CONNECTION DETAIL FOR PORT ENGINEER'S APPROVAL.
 - AT CONTRACTOR'S OPTION, CONTRACTOR CAN TEMPORARILY REMOVE (E) BEARING WALL SECTION TO FACILITATE UTILITY INSTALL. REPLACE WALL IN-KIND AFTER UTILITY INSTALL. CONTRACTOR MUST SHORE (E) FRAMING BEFORE REMOVING (E) WALL SECTION. SHORE DESIGN AND SCHEME SHALL BE SUBMITTED TO PORT ENGINEER FOR REVIEW AND APPROVAL PRIOR TO DEMO WORK.

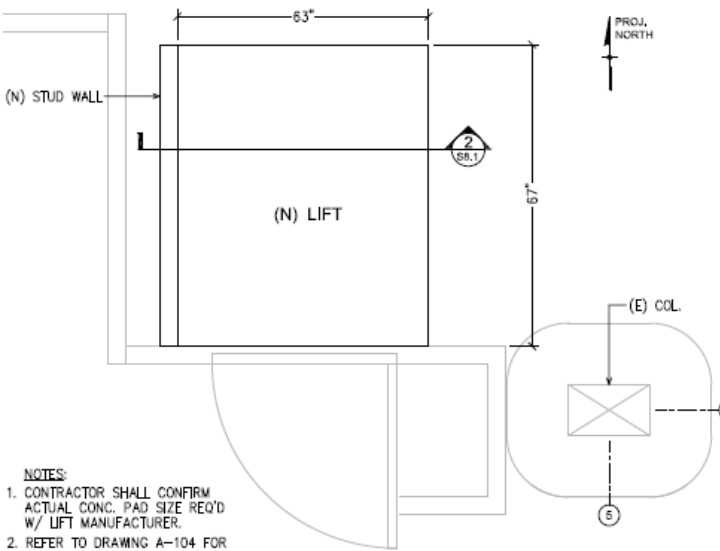
2 PARTIAL FRAMING PLAN - SECOND LEVEL PLATFORM
1/8" = 1' - 0"



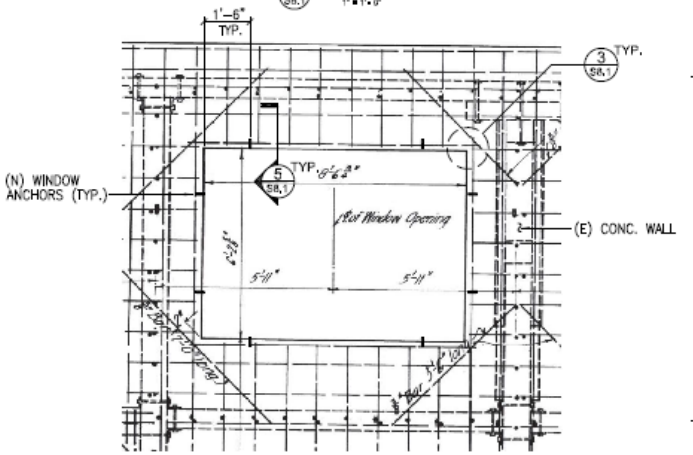
- NOTES:**
- REFER TO A-104 FOR INFORMATION NOT SHOWN.
 - AT CONTRACTOR'S OPTION, CONTRACTOR CAN TEMPORARILY REMOVE (E) BEARING WALL SECTION TO FACILITATE UTILITY INSTALL. REPLACE WALL IN-KIND AFTER UTILITY INSTALL. CONTRACTOR MUST SHORE (E) FRAMING BEFORE REMOVING (E) WALL SECTION. SHORE DESIGN AND SCHEME SHALL BE SUBMITTED TO PORT ENGINEER FOR REVIEW AND APPROVAL PRIOR TO DEMO WORK.

1 PARTIAL FRAMING PLAN - FIRST LEVEL OFFICE RESTROOM
1/8" = 1' - 0"

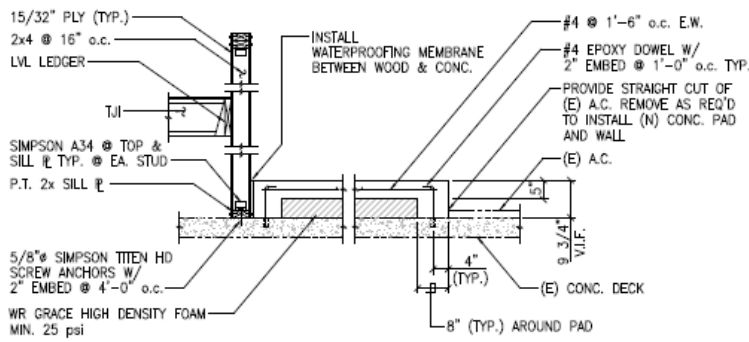
BEAM/JOIST HANGER SCHEDULE	
9" T.J.-230	MU4.75/9
LVL 3/4 x 9 1/2	HUC410-SDS
PSL 3/4 x 11 1/2	ECC44
4 x 12	U10
4 x 12 (STRINGER) TO LVL	LSSUH410
4 x 12 TO POST	HUC412



1 LIFT BASE
1/2" = 1'-0"

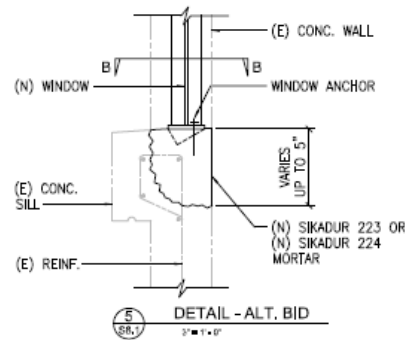


4 ELEVATION - ALT. BID
1/2" = 1'-0"

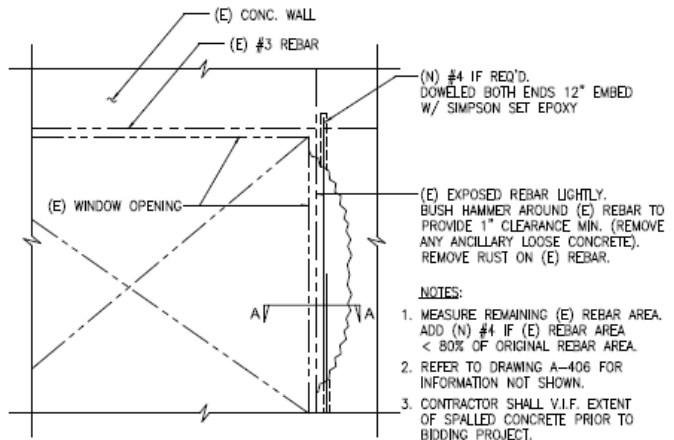
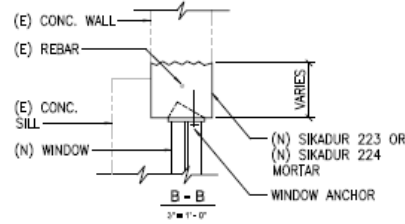


2 DETAIL
3/8" = 1'-0"

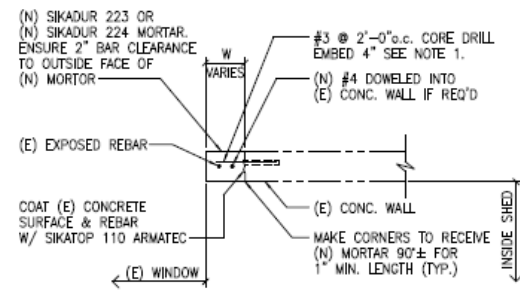
- NOTES:**
- CONTRACTOR SHALL SUBMIT HIGH DENSITY FOAM SPEC. FOR PORT APPROVAL.
 - CONTRACTOR SHALL COORDINATE T.O. CONC. PAD ELEV. W/ LIFT MANUFACTURER SPEC. REQUIREMENTS.
 - REFER TO DRAWING S7.1 FOR INFO. NOT SHOWN.



- NOTES:**
- REFER TO DRAWING A-205 FOR INFO. NOT SHOWN.
 - WINDOW ANCHORAGE SHOW SCHEMATICALLY.
 - CONTRACTOR SHALL SUBMIT WINDOW ANCHORAGE SHOP DRAWINGS FOR PORT'S REVIEW & APPROVAL.
 - REFER TO DETAIL 3/SB.1 FOR INFO. NOT SHOWN.



3 SECTION - ALT. BID
3/8" = 1'-0"



- NOTE:** 1. INSTALL #3 DOWELS WHEN W ≥ 4"

PLAN
A - A
1/2" = 1'-0"

20 ME"X" - 1 ST. RY. RPS FUTURE TENANT SPACE
(FOR CALCULATION PURPOSES ONLY)

ALTERNATE B D
NEW RESTROOM
SEE 1M212 FOR ENLARGED PLAN

ELECTRICAL ROOM
SEE 3M212 FOR ENLARGED PLAN

GAS METER ROOM
SEE 2M212 FOR ENLARGED PLAN

2 ST. RY. FUTURE TENANT SPACE
(FOR CALCULATION PURPOSES ONLY)

(B) GRAVITY VENTILATORS TO REMAIN AND
SATISFY ST. RY. AREA VENTILATION

PARKING AREA TO COMPLY
WITH NATURAL VENTILATION.

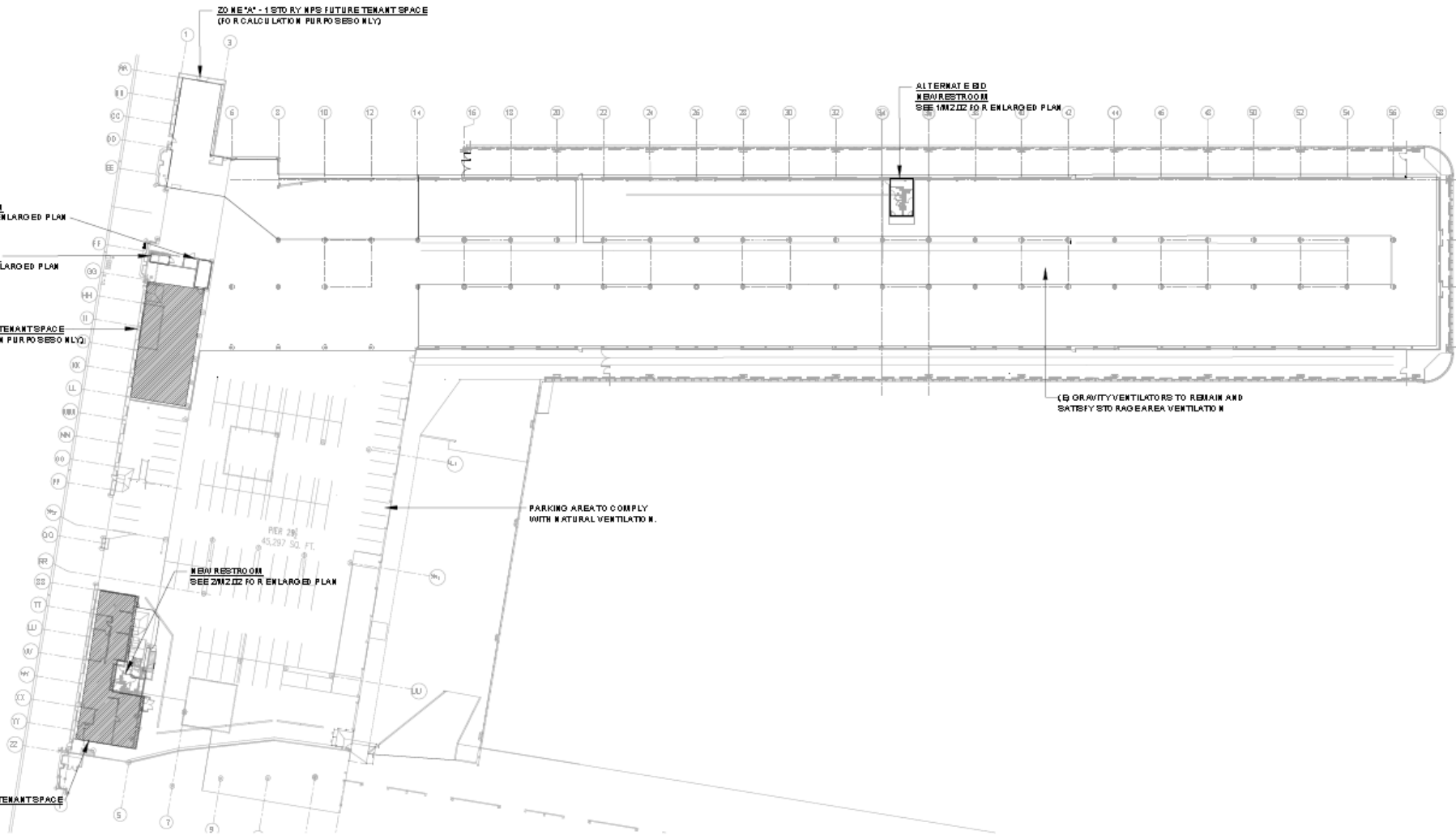
NEW RESTROOM
SEE 2M212 FOR ENLARGED PLAN

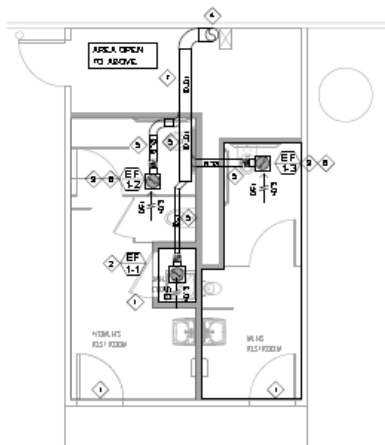
PER 208
45,297 SQ. FT.

EXISTING 2 ST. RY. TENANT SPACE

MECHANICAL SITE PLAN

W2.01





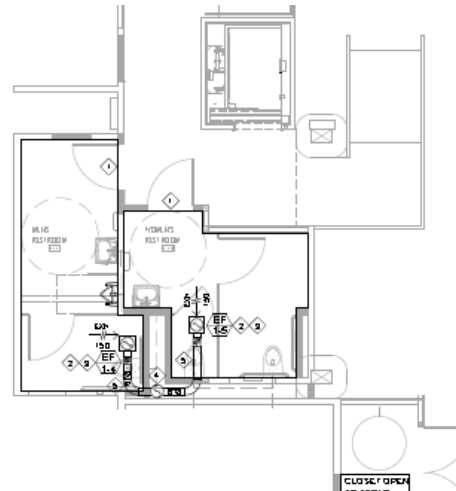
- MECHANICAL SHEET NOTES**
- 1 PROVIDE (N) LOWERED DOOR FOR MAKE-UP AIR TO ROOM, COORDINATE WITH ARCHITECT AND PORT FOR EXACT SPECIFICATIONS.
 - 2 PROVIDE (N) CEILING EXHAUST FAN FOR CLOSET, NUTLOCK WITH LIGHT SW FAN.
 - 3 PROVIDE (N) CEILING EXHAUST FAN FOR RESTROOM, NUTLOCK WITH OCCUPANCY SENSOR.
 - 4 PROVIDE (N) 12" EXHAUST DUCT RISER UP THROUGH ROOF OF PIER 91 WITH CAP, USE (E) ROOF PENETRATIONS WHERE POSSIBLE, FIELD VERIFY FOR EXACT SIZE AND LOCATION.
 - 5 DUCTWORK SHOWN & LOCATED ABOVE CEILING OF RESTROOM'S STRUCTURE.
 - 6 PROVIDE SEPARATE ROOM OCCUPANCY SENSOR LOCATED AT CEILING TO CONTROL EXHAUST FAN AND LIGHTING.
 - 7 DUCT SUPPORT CROSSING OVER TO NEARBY WALL, PROVIDE UNIFORM SUPPORTS FASTENED FROM PIER 91 WALL OVER TO THE CEILING OF THE RESTROOMS.

KEY PLAN



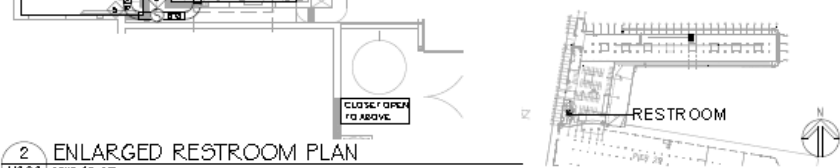
ALTERNATE BID 1
ENLARGED RESTROOM PLAN

1
M2.02



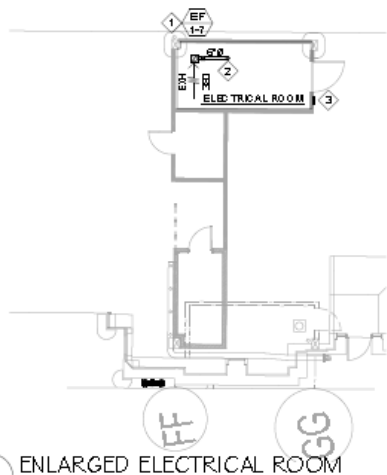
- MECHANICAL SHEET NOTES**
- 1 PROVIDE (N) LOWERED DOOR FOR MAKE-UP AIR TO ROOM, COORDINATE WITH ARCHITECT AND PORT FOR EXACT SPECIFICATIONS.
 - 2 PROVIDE SEPARATE ROOM OCCUPANCY SENSOR LOCATED AT CEILING TO CONTROL EXHAUST FAN AND LIGHTING.
 - 3 PROVIDE (N) CEILING EXHAUST FAN FOR RESTROOM (N) CEILING FRAMING, NUTLOCK FAN WITH OCCUPANCY SENSOR.
 - 4 PROVIDE (N) 12" EXHAUST DUCT RISER UP THROUGH ROOF OF PIER 91 WITH CAP, USE (E) ROOF PENETRATIONS WHERE POSSIBLE, FIELD VERIFY FOR EXACT SIZE AND LOCATION.
 - 5 DUCTWORK SHOWN & LOCATED ABOVE THE CEILING OF RESTROOM.

KEY PLAN



2
ENLARGED RESTROOM PLAN

M2.02



- MECHANICAL SHEET NOTES**
- 1 PROVIDE (N) EXHAUST FAN TO THE ELECTRICAL ROOM, PROVIDE ADJUSTABLE THERMOSTAT SET AT 85°F.
 - 2 PROVIDE (N) 6" EXHAUST UP THROUGH CEILING WITH CAP, DISCHARGE INTO PARKING GARAGE.
 - 3 PROVIDE (N) 12" MAKE-UP AIR LOUVER TO, NO-N-RATED ELECTRICAL ROOM, COORDINATE WITH ARCHITECT FOR EXACT LOCATION.

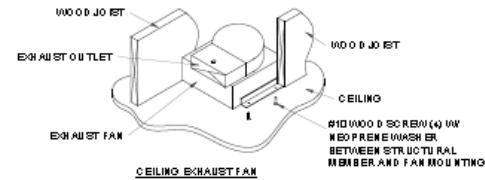
KEY PLAN



3
ENLARGED ELECTRICAL ROOM

M2.02

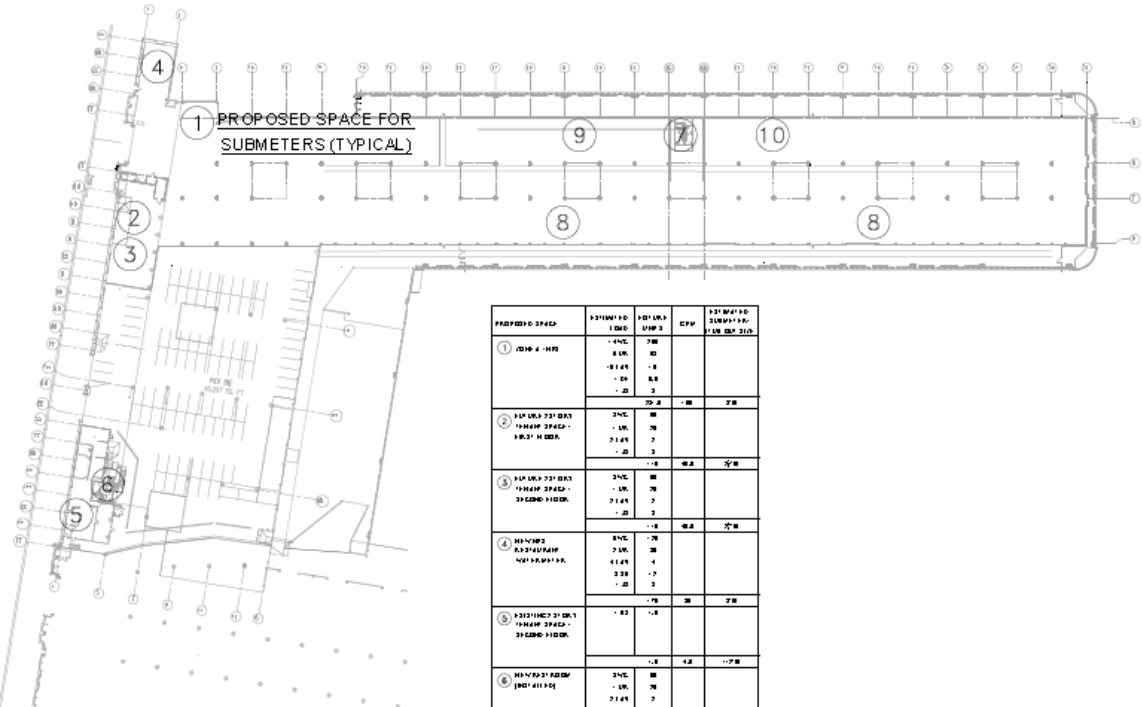
ELECTRICAL ROOM



CEILING EXHAUST FAN

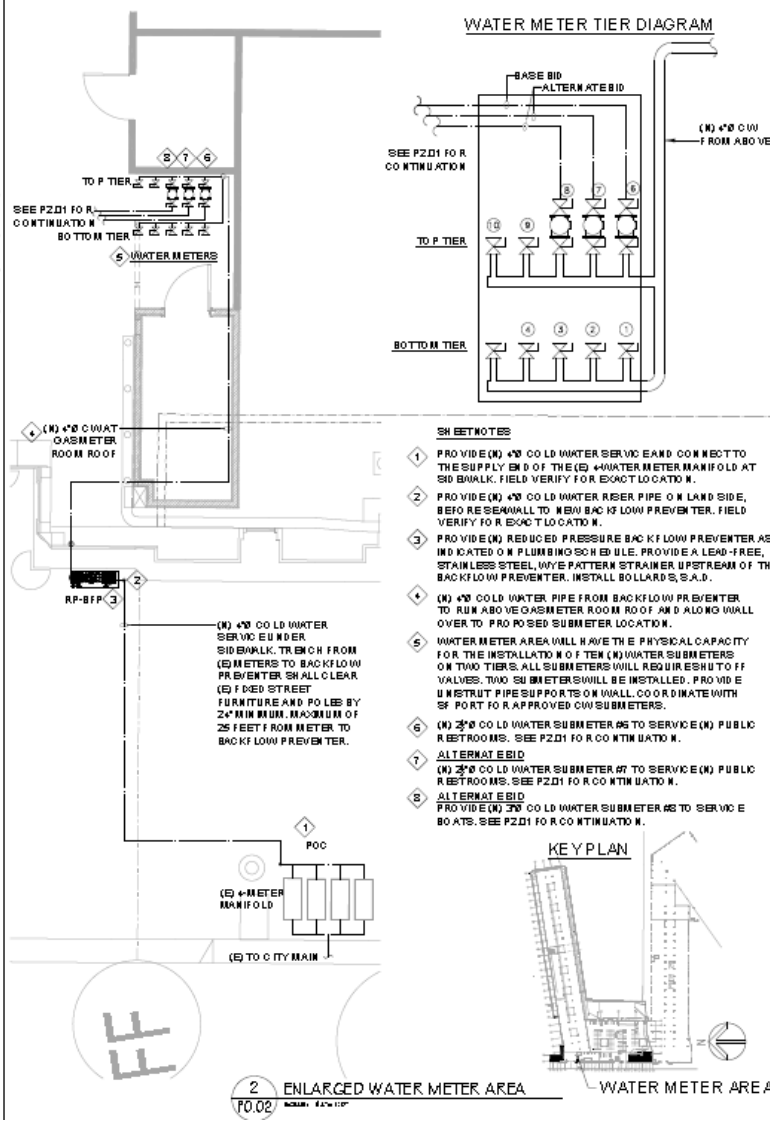
4
CEILING EXHAUST FAN DETAIL

M2.02



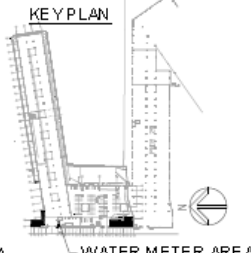
PROPOSED SPACE	EXISTING FC (INCH)	EXISTING SUP. 2 (INCH)	CFM	EXISTING SUBMETER (INCH SUP. 2)
1) (E) 4" CW	-4.00	2.00		
	8.00	0		
	-8.00	-1		
	-16	8.00		
	-20	2		
	-20.0	-10	2.00	
2) (E) 4" CW (E) 4" CW	3.00	0		
	-1.00	20		
	21.00	2		
	-20	2		
	-1.0	-0.2	2.00	
3) (E) 4" CW (E) 4" CW	3.00	0		
	-1.00	20		
	21.00	2		
	-20	2		
	-1.0	-0.2	2.00	
4) (E) 4" CW (E) 4" CW	3.00	0		
	-1.00	20		
	21.00	2		
	-20	2		
	-1.0	-0.2	2.00	
5) (E) 4" CW (E) 4" CW	3.00	0		
	-1.00	20		
	21.00	2		
	-20	2		
	-1.0	-0.2	2.00	
6) (E) 4" CW (E) 4" CW	3.00	0		
	-1.00	20		
	21.00	2		
	-20	2		
	-1.0	-0.2	2.00	
7) (E) 4" CW (E) 4" CW	3.00	0		
	-1.00	20		
	21.00	2		
	-20	2		
	-1.0	-0.2	2.00	
8) (E) 4" CW (E) 4" CW	3.00	0		
	-1.00	20		
	21.00	2		
	-20	2		
	-1.0	-0.2	2.00	
9) (E) 4" CW (E) 4" CW	3.00	0		
	-1.00	20		
	21.00	2		
	-20	2		
	-1.0	-0.2	2.00	
10) (E) 4" CW (E) 4" CW	3.00	0		
	-1.00	20		
	21.00	2		
	-20	2		
	-1.0	-0.2	2.00	
1) (E) 4" CW (E) 4" CW	3.00	0		
	-1.00	20		
	21.00	2		
	-20	2		
	-1.0	-0.2	2.00	

1 WATER SUBMETER STUBOUT LOCATIONS AND SIZING CALCULATIONS
 P.02 1/24/20 11/20/20



- NOTES**
- PROVIDE (N) 4" CW WATER SERVICE AND CONNECTION TO THE SUPPLY END OF THE (E) 4" WATER METER MANIFOLD AT SIDEWALK. FIELD VERIFY FOR EXACT LOCATION.
 - PROVIDE (N) 4" CW WATER RESER PIPE ON LAND SIDE, BEFORE SEAWALL TO NEW BACKFLOW PREVENTER. FIELD VERIFY FOR EXACT LOCATION.
 - PROVIDE (N) REDUCED PRESSURE BACKFLOW PREVENTER AS INDICATED ON PLUMBING SCHEDULE. PROVIDE A LEAD-FREE, STAINLESS STEEL, WYE PATTERN STRAINER UPSTREAM OF THE BACKFLOW PREVENTER. INSTALL BOLLARDS, S.A.D.
 - (N) 4" CW WATER PIPE FROM BACKFLOW PREVENTER TO RUM ABOVE GAS METER ROOM ROOF OF JMD ALONG WALL OVER TO PROPOSED SUBMETER LOCATION.
 - WATER METER AREA WILL HAVE THE PHYSICAL CAPACITY FOR THE INSTALLATION OF (N) WATER SUBMETERS ON TWO TIERS. ALL SUBMETERS WILL REQUIRE SHUT OFF VALVES. TWO SUBMETER SHALL BE INSTALLED. PROVIDE UNSTRUCT PIPE SUPPORTS ON WALL. COORDINATE WITH SE PORT FOR APPROVED CW SUBMETERS.
 - (N) 2" CW WATER SUBMETERS TO SERVICE (N) PUBLIC RESTROOMS. SEE P.221 FOR CONTINUATION.
 - ALTERNATE BID (N) 2" CW WATER SUBMETER #7 TO SERVICE (N) PUBLIC RESTROOMS. SEE P.221 FOR CONTINUATION.
 - ALTERNATE BID (N) 2" CW WATER SUBMETER #8 TO SERVICE (N) PUBLIC RESTROOMS. SEE P.221 FOR CONTINUATION.

2 ENLARGED WATER METER AREA
 P.02 1/24/20 11/20/20



GAS METER ROOM EXHAUST FAN SCHEDULE

TAG	LOCATION	MAKE/MODEL	RPM	CFM	E.S.P. (INCHES)	VOLT	# PHASES	FLA	MCA	MCCP	ELECTRICAL		WT (LB)	REMARK
											HT	WT		
EF-1-8	GAS ROOM	GREENHECK 250-75-WG1/6	1550	200	0.30"	4.8	3	-	-	-	0.06	1.0	36	①, ②, ③

REMARKS:
 ① PROVIDE FLEXIBLE CONNECTIONS, EXPLOSION PROOF RATED ENCLOSURE AND MOTOR. FAN SHALL MEET NFPA 70, CLASS 1, DIVISION, GROUP D REQUIREMENT. MOUNT FAN ABOVE CEILING WITH UNISTRUT MOUNTING AND VIBRATION ISOLATORS.
 ② FAN SHALL RUN CONTINUOUSLY.
 ③ PROVIDE DISCONNECT SWITCH AND BACKDRAFT DAMPER.
 ④ TIE TO BUILDING FIRE ALARM PANEL TO GENERATE ALARM IN CASE OF FAILURE TO EXHAUST FAN.

GAS METER ROOM VENTILATION CALCS.

GAS METER ROOM VENTILATION CALCULATION

APPROXIMATE ROOM FLOOR AREA: 136 SF
 ROOM HEIGHT: 10'-0"

REQUIRED AIR FLOW PER CODE 15:
 (1 CFM PER SQUARE FEET)

136 SF x 1 CFM/SF = 136 CFM
 (5 AIR CHANGES PER HOUR)

136 SF x 10 FT x 6/60 = 136 CFM

TAKING THE LARGER OF THE TWO: REQUIRED MINIMUM VENTILATION AIR FLOW RATE IS: **136 CFM**

DESIGN AIR FLOW RATE = 200 CFM

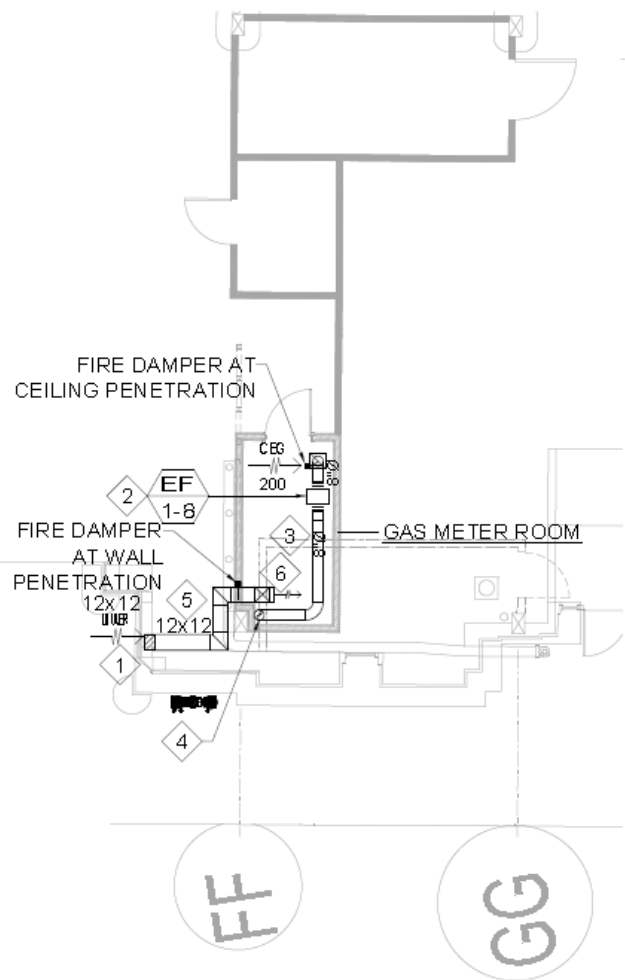
GAS METER ROOM DUCT LOSS CALCULATION

(N) 8" Ø EXHAUST AIR DUCT LOSS: 75 FT (TOTAL EQUIVALENT LENGTH) x 0.01"/100 FT = 0.01" W.C.
 (N) 12x12 INTAKE AIR DUCT LOSS: 75 FT (TOTAL EQUIVALENT LENGTH) x 0.01"/100 FT = 0.01" W.C.
 EXHAUST AND INTAKE AIR GRILLE LOSS: 0.10" W.C.

TOTAL DUCT SYSTEM PRESSURE LOSS: 0.01" + 0.01" + 0.10" = 0.12" W.C.

FAN EXTERNAL STATIC PRESSURE AS DESIGNED: 0.30" W.C.

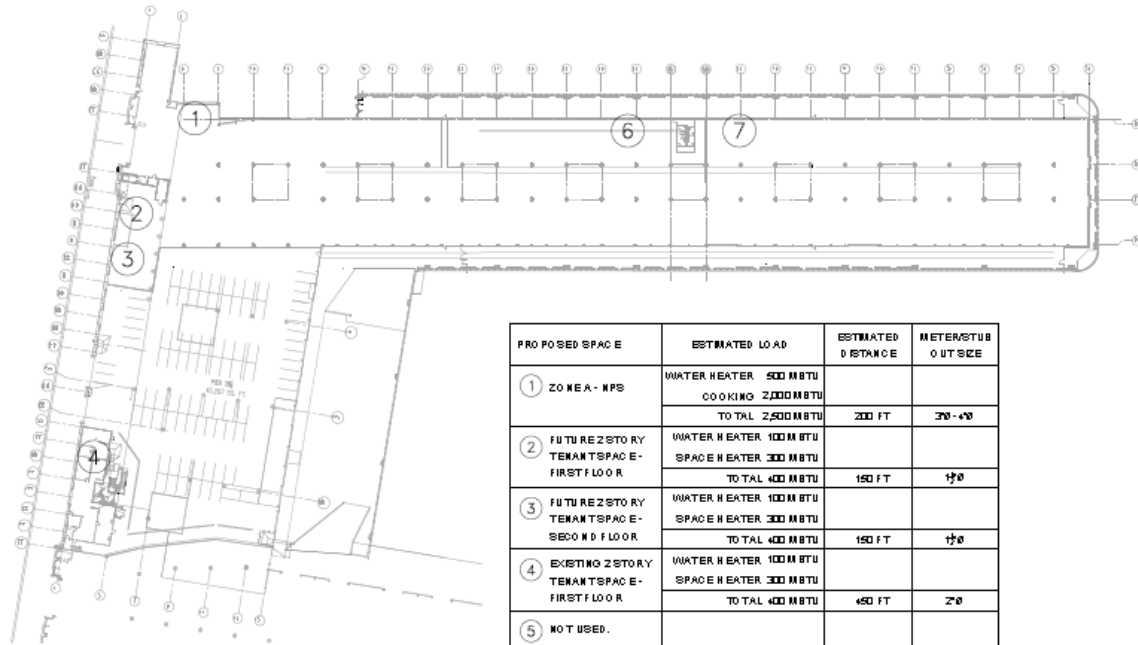
- MECHANICAL SHEET NOTES**
- ① PROVIDE (N) 12x12 OUTSIDE AIR LOUVER AT EXTERIOR WALL MOUNTED AT 2' ABOVE FINISHED FLOOR SIDEWALK COORDINATE WITH ARCHITECT FOR EXACT LOCATION, LOCATION AND HEIGHT OF LOUVER TO BE CONFIRMED BY POSE.
 - ② PROVIDE (N) EXPLOSION PROOF EXHAUST AIR FAN AT 200 CFM RUNNING CONTINUOUSLY AND MOUNTED IN CASE OF FAILURE, TIE TO BUILDING FIRE ALARM PANEL TO GENERATE ALARM IN CASE OF FAILURE TO EXHAUST FAN. EXHAUST FAN SHALL BE MOUNTED ON TO PO F GAS METER ROOM ON UNISTRUT SUPPORT BRACKETS WITH VIBRATION ISOLATORS. FAN SHALL MEET NFPA 70, CLASS 1, DIVISION 1, GROUP D REQUIREMENT.
 - ③ PROVIDE (N) 12x12 CEILING EXHAUST ORILE AND (N) 8" Ø DUCTWORK INTO EXHAUST FAN ON LOWER ROOF OF GAS METER ROOM. PROVIDE 1-1/2 HOUR RUSKIN OF FLOW EXTENDED CEILING FIRE DAMPER AT PENETRATION INTO GAS METER ROOM.
 - ④ PROVIDE (N) 8" Ø EXHAUST UP THROUGH ROOF OF PIER 31 WITH CAP. COORDINATE WITH STRUCTURAL FRAMING. VERIFY IN FIELD.
 - ⑤ PROVIDE (N) 12x12 DUCTWORK FROM LOUVER TO GAS METER ROOM ENCLOSED IN A RATED 90 MIN. COORDINATE WITH ARCHITECT.
 - ⑥ PROVIDE (N) 12x12 DUCTWORK INTO GAS METER ROOM AND DROP TO FLOOR LEVEL WITH A 12x12 PENING AT 12" ABOVE FINISHED FLOOR. COORDINATE WITH ARCHITECT. PROVIDE NEW 1-1/2 HOUR RUSKIN DOUBLE CURTAIN TYPE FIRE DAMPER AT WALL PENETRATION INTO GAS METER ROOM.



① ENLARGED GAS METER ROOM
 SCALE: 1/2" = 1'-0"

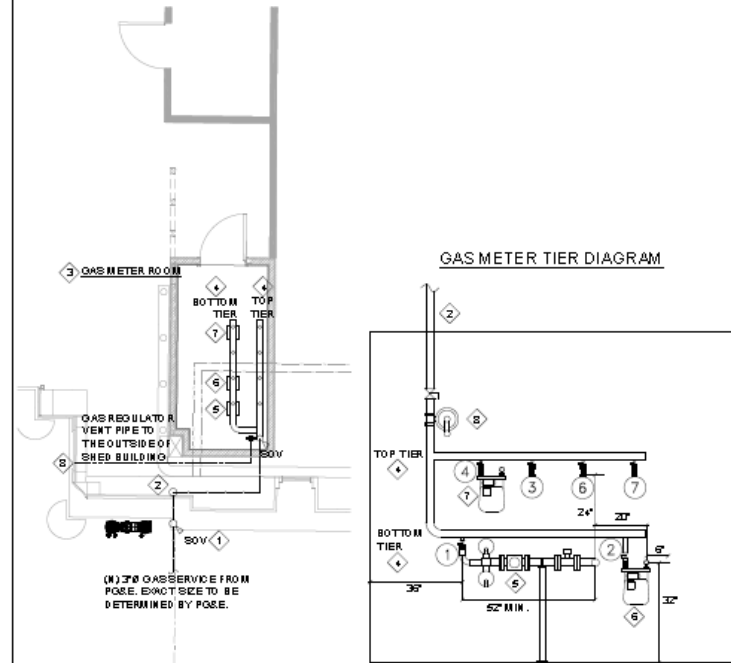


GAS METER ROOM



PROPOSED SPACE	ESTIMATED LOAD	ESTIMATED DISTANCE	METER/STUBOUT SIZE
① ZONE A - NPS	WATER HEATER 500 MBTU		
	COOKING 2,000 MBTU		
	TOTAL 2,500 MBTU	200 FT	3/4" - 1"
② FUTURE 2 STORY TENANT SPACE - FIRST FLOOR	WATER HEATER 100 MBTU		
	SPACE HEATER 300 MBTU		
	TOTAL 400 MBTU	150 FT	1/2"
③ FUTURE 2 STORY TENANT SPACE - SECOND FLOOR	WATER HEATER 100 MBTU		
	SPACE HEATER 300 MBTU		
	TOTAL 400 MBTU	150 FT	1/2"
④ EXISTING 2 STORY TENANT SPACE - FIRST FLOOR	WATER HEATER 100 MBTU		
	SPACE HEATER 300 MBTU		
	TOTAL 400 MBTU	450 FT	2"
⑤ NOT USED.			
⑥ FUTURE TENANT	WATER HEATER 100 MBTU		
	SPACE HEATER 300 MBTU		
	TOTAL 400 MBTU	550 FT	2"
⑦ FUTURE TENANT	WATER HEATER 100 MBTU		
	SPACE HEATER 300 MBTU		
	TOTAL 400 MBTU	650 FT	2"
TOTAL ESTIMATED SERVICE LOAD 4,500 MBTU			

1 GAS METER AND STUBOUT SIZING LOCATION AND CALCULATIONS
SCALE: AS SHOWN



- SHEET NOTES**
- PROVIDE (N) MAIN GAS RISER WITH SHUTOFF VALVE AT 12" A.F.F. OUTSIDE THE BUILDING.
 - RUN (N) GAS PIPING OVER INTO GAS METER ROOM.
 - NEW GAS METER ROOM WILL HAVE THE CAPACITY FOR EXH (N) GAS METERS ON TWO TIERS. ALL METERS WILL REQUIRE SHUTOFF VALVES. THREE NEW GAS METERS WILL BE INSTALLED BY POSE.
 - PROVIDE SHUTOFF VALVE TO GAS METER TIERS AND AT EACH STUBOUT.
 - INSTALL (N) 3/4" - 1" GAS ROTARY METER #1 FOR R1 STORY ZONE A - NPS TENANT SPACE.
 - INSTALL (N) 1/2" GAS METER #2 FOR FUTURE 2 STORY TENANT SPACE - FIRST FLOOR.
 - INSTALL (N) 2" GAS METER #4 FOR EXISTING 2 STORY TENANT SPACE - FIRST FLOOR.
 - PROVIDE (N) GAS REGULATOR TO STEP DOWN MAIN SERVICE PRESSURE DOWN TO 0.25 PSI. PROVIDE (N) GAS REGULATOR VENT PIPING TO DISCHARGE OUT THE EXTERIOR WALL. GAS REGULATOR VENT TERMINATION SHALL COMPLY WITH POSE REQUIREMENTS.

2 ENLARGED GAS METER ROOM
SCALE: AS SHOWN

ZONE 'K' - 1 STORY NPS FUTURE TENANT SPACE

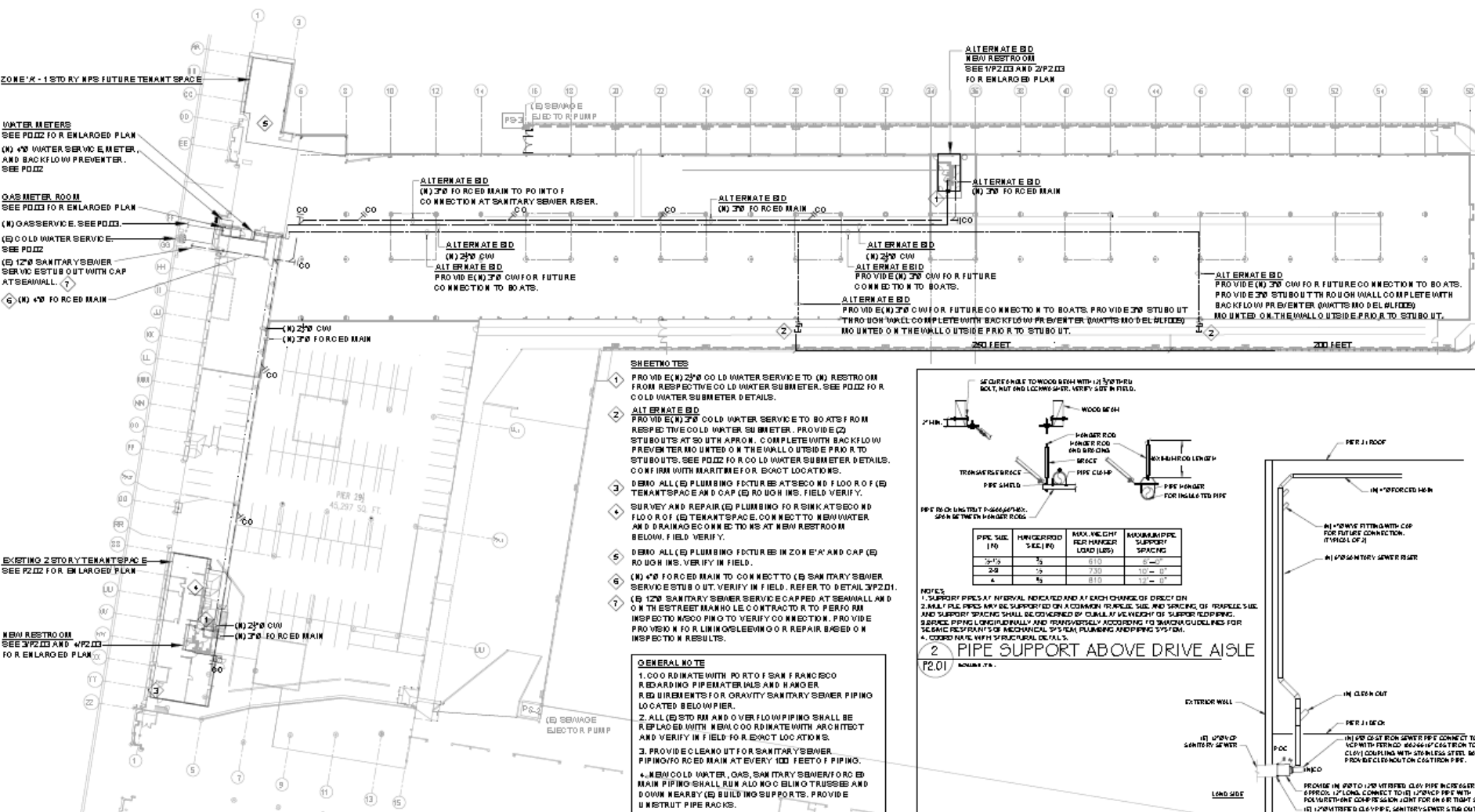
WATER METERS
SEE P022 FOR ENLARGED PLAN
(N) 4" W/ATER SERVICE METER AND BACKFLOW PREVENTER. SEE P022

GAS METER ROOM
SEE P022 FOR ENLARGED PLAN
(N) GAS SERVICE. SEE P022.

(E) COLD WATER SERVICE. SEE P022
(E) 12" SANITARY SEWER SERVICE ESTUB OUT WITH CAP AT SEAWALL.
(N) 4" W/ATER FORCED MAIN

EXISTING 2 STORY TENANT SPACE
SEE P202 FOR ENLARGED PLAN

NEW RESTROOM
SEE P202 AND P203 FOR ENLARGED PLAN



SHEET NOTES

1. PROVIDE (E) 2 1/2" COLD WATER SERVICE TO (N) RESTROOM FROM RESPECTIVE COLD WATER SUBMETER. SEE P022 FOR COLD WATER SUBMETER DETAILS.
2. ALTERNATE B/D PROVIDE (N) 3/4" COLD WATER SERVICE TO BOATS FROM RESPECTIVE COLD WATER SUBMETER. PROVIDE (C) STUBOUTS AT 50" UTI APPROX. COMPLETE WITH BACKFLOW PREVENTER MOUNTED ON THE WALL OUTSIDE PRIOR TO STUBOUTS. SEE P022 FOR COLD WATER SUBMETER DETAILS. CONFIRM WITH MARITIME FOR BOAT LOCATIONS.
3. DEMO ALL (E) PLUMBING FEATURES AT SECOND FLOOR OF (E) TENANT SPACE AND CAP (E) ROUGH INS. FIELD VERIFY.
4. SURVEY AND REPAIR (E) PLUMBING FOR SINK AT SECOND FLOOR OF (E) TENANT SPACE. CONNECT TO NEW WATER AND DRAINAGE CONNECTIONS AT NEW RESTROOM BELOW. FIELD VERIFY.
5. DEMO ALL (E) PLUMBING FEATURES IN ZONE 'M' AND CAP (E) ROUGH INS. VERIFY IN FIELD.
6. (N) 4" FORCED MAIN TO CONNECT TO SANITARY SEWER SERVICE ESTUB OUT. VERIFY IN FIELD. REFER TO DETAIL P2.01.
7. (E) 12" SANITARY SEWER SERVICE CAPPED AT SEAWALL AND ON THE STREET MAIN. LEAVE CONTRACTOR TO PERFORM INSPECTION AND PILING TO VERIFY CONNECTION. PROVIDE PROVISION FOR LUMINOUS GREEN COLOR REPAIR BASED ON INSPECTOR'S RESULTS.

GENERAL NOTE

1. COORDINATE WITH PORT OF SAN FRANCISCO REGARDING PIPE MATERIALS AND HANGER REQUIREMENTS FOR GRAVITY SANITARY SEWER PIPING LOCATED BELOW PIER.
2. ALL (E) STORM AND OVERFLOW PIPING SHALL BE REPLACED WITH NEW COORDINATE WITH ARCHITECT AND VERIFY IN FIELD FOR EXACT LOCATIONS.
3. PROVIDE CLEAN OUT FOR SANITARY SEWER PIPING/FORCED MAIN AT EVERY 100 FEET OF PIPING.
4. NEW COLD WATER, GAS, SANITARY SEWER/FORCED MAIN PIPING SHALL RUN ALONG BULKHEAD TRUSSES AND DOWN NEARBY (E) BUILDING SUPPORTS. PROVIDE UNSTRUCTURED PIPE RACKS.

ALTERNATE B/D
NEW RESTROOM
SEE P202 AND P203
FOR ENLARGED PLAN

ALTERNATE B/D
(N) 3/4" FORCED MAIN TO POINT OF CONNECTION AT SANITARY SEWER RISER.

ALTERNATE B/D
(N) 3/4" FORCED MAIN

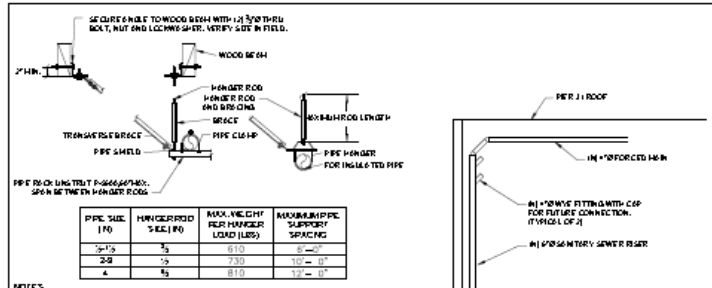
ALTERNATE B/D
(N) 3/4" FORCED MAIN

ALTERNATE B/D
(N) 3/4" C/W
ALTERNATE B/D
PROVIDE (N) 3/4" C/W FOR FUTURE CONNECTION TO BOATS.

ALTERNATE B/D
(N) 2 1/2" C/W
ALTERNATE B/D
PROVIDE (N) 3/4" C/W FOR FUTURE CONNECTION TO BOATS.

ALTERNATE B/D
PROVIDE (N) 3/4" C/W FOR FUTURE CONNECTION TO BOATS. PROVIDE (N) STUBOUT THROUGH WALL COMPLETE WITH BACKFLOW PREVENTER (WHATTS MODEL #100) MOUNTED ON THE WALL OUTSIDE PRIOR TO STUBOUT.

ALTERNATE B/D
PROVIDE (N) 3/4" C/W FOR FUTURE CONNECTION TO BOATS. PROVIDE (N) STUBOUT THROUGH WALL COMPLETE WITH BACKFLOW PREVENTER (WHATTS MODEL #100) MOUNTED ON THE WALL OUTSIDE PRIOR TO STUBOUT.



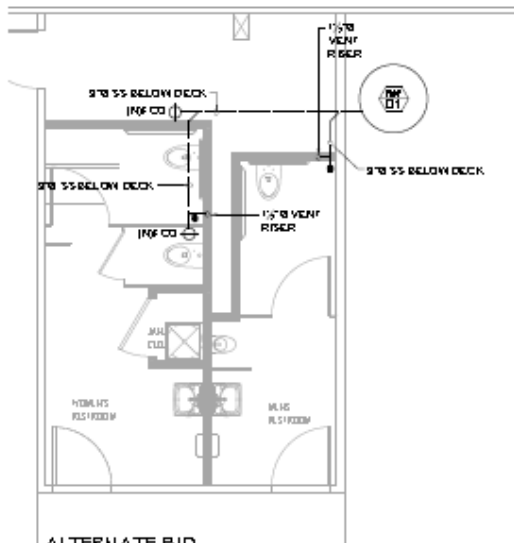
PIPE SIZE (1")	HANGER ROD SIZE (1")	MAX. WEIGHT PER HANGER LOAD (LBS)	MAXIMUM PIPE SUPPORT SPACING
3/4"	3/8"	610	8'-0"
2"	1/2"	730	10'-0"
4"	3/4"	810	12'-0"

NOTES:
1. SUPPORT PIPES AT INTERVAL INDICATED AND AT EACH CHANGE OF DIRECTION.
2. SMALL PIPE PIPES SHALL BE SUPPORTED ON A COMMON TRACKING SIDE AND SPACING OF TRACKING SIDE AND SUPPORT SPACING SHALL BE DETERMINED BY CUMULATIVE WEIGHT OF SUPPORT COUPLERS.
3. SERVICE PIPING LONGITUDINALLY AND TRANSVERSELY ACCORDING TO SWIMWAY GUIDELINES FOR SERVICE REPAIRS OF MECHANICAL SYSTEM PLUMBING AND PIPING SYSTEM.
4. COORDINATE WITH STRUCTURAL DETAILS.

2 PIPE SUPPORT ABOVE DRIVE AISLE
P2.01

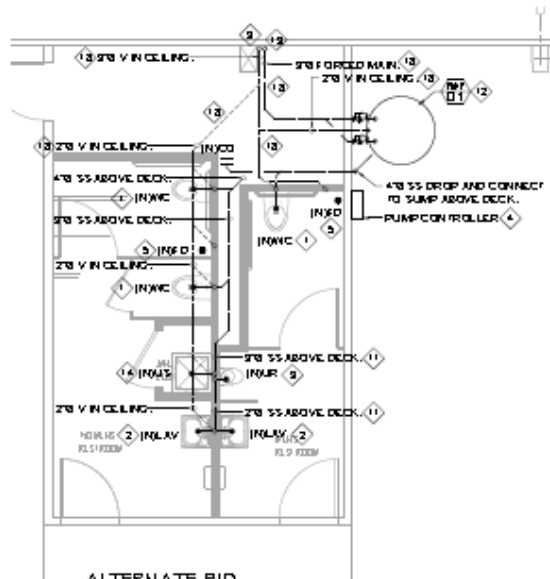
1 PLUMBING SITE PLAN
P2.01

3 SCHEMATIC SANITARY SEWER CONNECTION DETAIL
P2.01



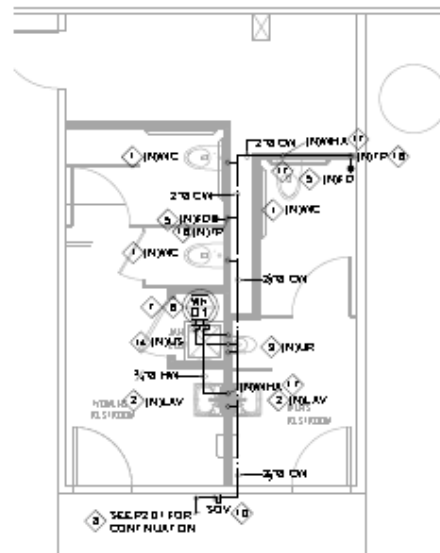
ALTERNATE BID
ENLARGED RESTROOM PLAN
WASTE AND VENT - BELOW DECK

1
P2.03



ALTERNATE BID
ENLARGED RESTROOM PLAN
WASTE AND VENT - ABOVE DECK

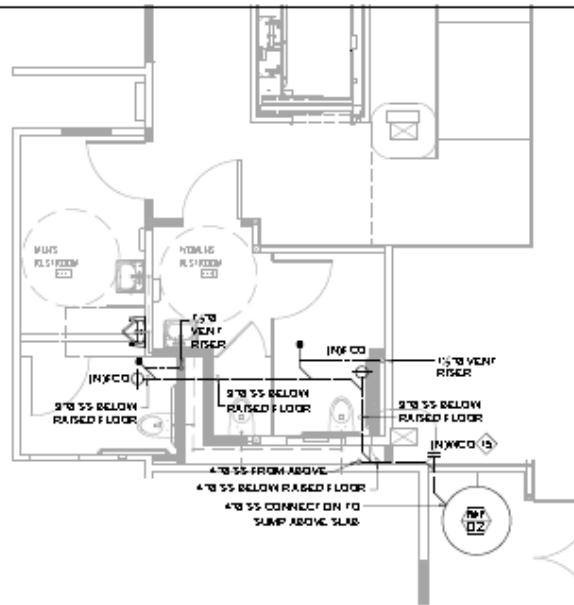
2
P2.03



ALTERNATE BID
ENLARGED RESTROOM PLAN - CW AND HW

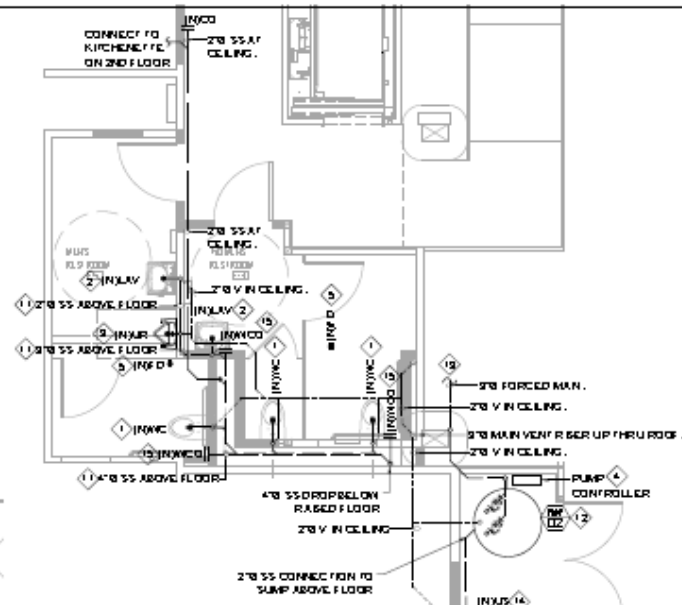
3
P2.03

- SCHEDULE NOTES**
- 1 PROVIDE IN WALL MOUNTED PIPING. ALL PIPING SHALL BE PROVIDED IN WALL MOUNTED PIPING SHALL RUN ABOVE DECK.
 - 2 PROVIDE IN WALL MOUNTED PIPING SHALL RUN ABOVE DECK.
 - 3 PROVIDE IN WALL MOUNTED PIPING SHALL RUN ABOVE DECK.
 - 4 CONTRACTOR SHALL PROVIDE THE SUMP PUMP AND PUMP CONTROLLER.
 - 5 PROVIDE IN FLOOR DRAIN NEW SANITARY SEWER.
 - 6 PROVIDE 2\"/>



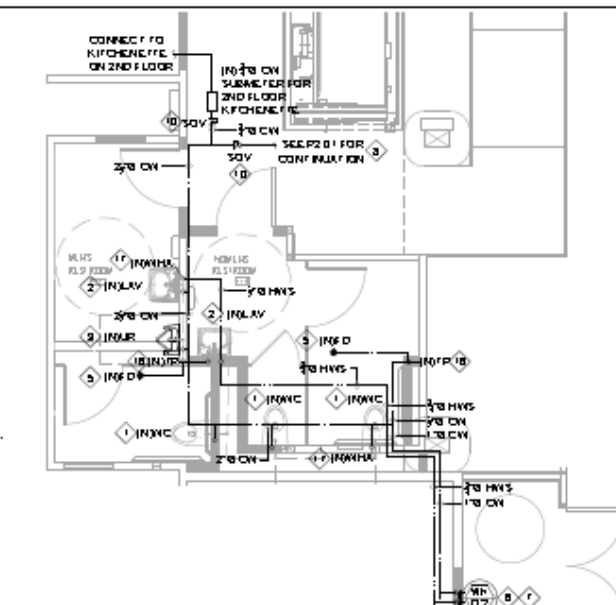
ENLARGED RESTROOM PLAN
WASTE AND VENT - BELOW RAISED FLOOR

4
P2.05



ENLARGED RESTROOM PLAN
WASTE AND VENT - ABOVE RAISED FLOOR

5
P2.05

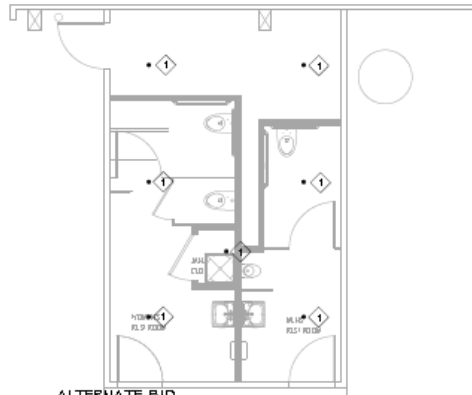


ENLARGED RESTROOM PLAN - CW AND HW

6
P2.05

SHEETNOTES
 1 ALTERNATE BID
 PROVIDE (N) FIRE SPRINKLER HEAD, CONNECT TO NEARBY (E) FIRE SPRINKLER PIPING.

FOR REFERENCE ONLY:
 FIRE SPRINKLER DESIGN BUILD BY A C-16 LICENSED FIRE PROTECTION CONTRACTOR. PROVIDE PERMIT AND SHOP DRAWINGS.



1 ALTERNATE BID
 ENLARGED RESTROOM PLAN - FIRE SPRINKLER
 SCALE: 1/2" = 1'-0"

KEY PLAN

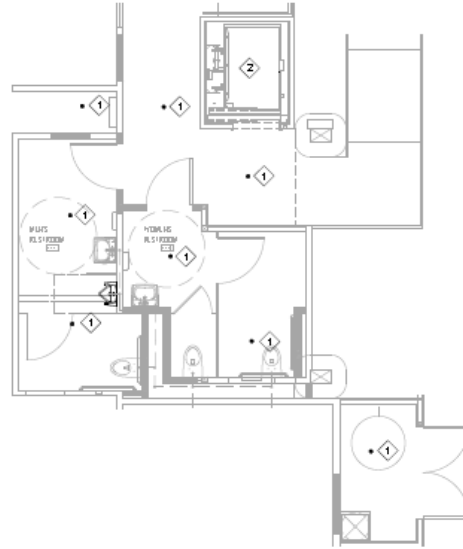


ALTERNATE BID
 RESTROOM

SHEETNOTES

- 1 PROVIDE (N) FIRE SPRINKLER HEAD, CONNECT TO NEARBY (E) FIRE SPRINKLER PIPING.
- 2 PROVIDE (N) FIRE SPRINKLER HEAD AT THE TOP AND BOTTOM OF ELEVATOR SHAFT, CONNECT TO NEARBY (E) FIRE SPRINKLER PIPING.

FOR REFERENCE ONLY:
 FIRE SPRINKLER DESIGN BUILD BY A C-16 LICENSED FIRE PROTECTION CONTRACTOR. PROVIDE PERMIT AND SHOP DRAWINGS.



2 ENLARGED RESTROOM PLAN - FIRE SPRINKLER
 SCALE: 1/2" = 1'-0"

KEY PLAN

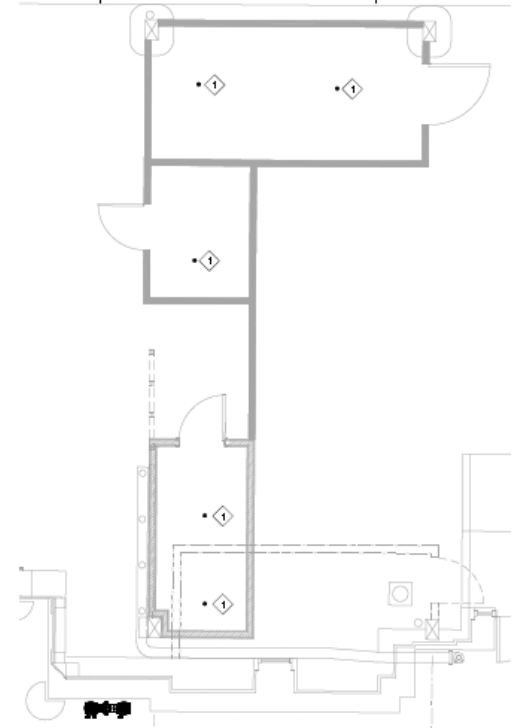


RESTROOM

SHEETNOTES

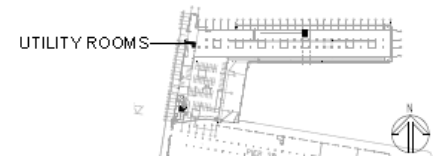
- 1 PROVIDE (N) FIRE SPRINKLER HEAD, CONNECT TO NEARBY (E) FIRE SPRINKLER PIPING.
- 2 PROVIDE (N) FIRE SPRINKLER HEAD AT THE TOP AND BOTTOM OF ELEVATOR SHAFT, CONNECT TO NEARBY (E) FIRE SPRINKLER PIPING.

FOR REFERENCE ONLY:
 FIRE SPRINKLER DESIGN BUILD BY A C-16 LICENSED FIRE PROTECTION CONTRACTOR.

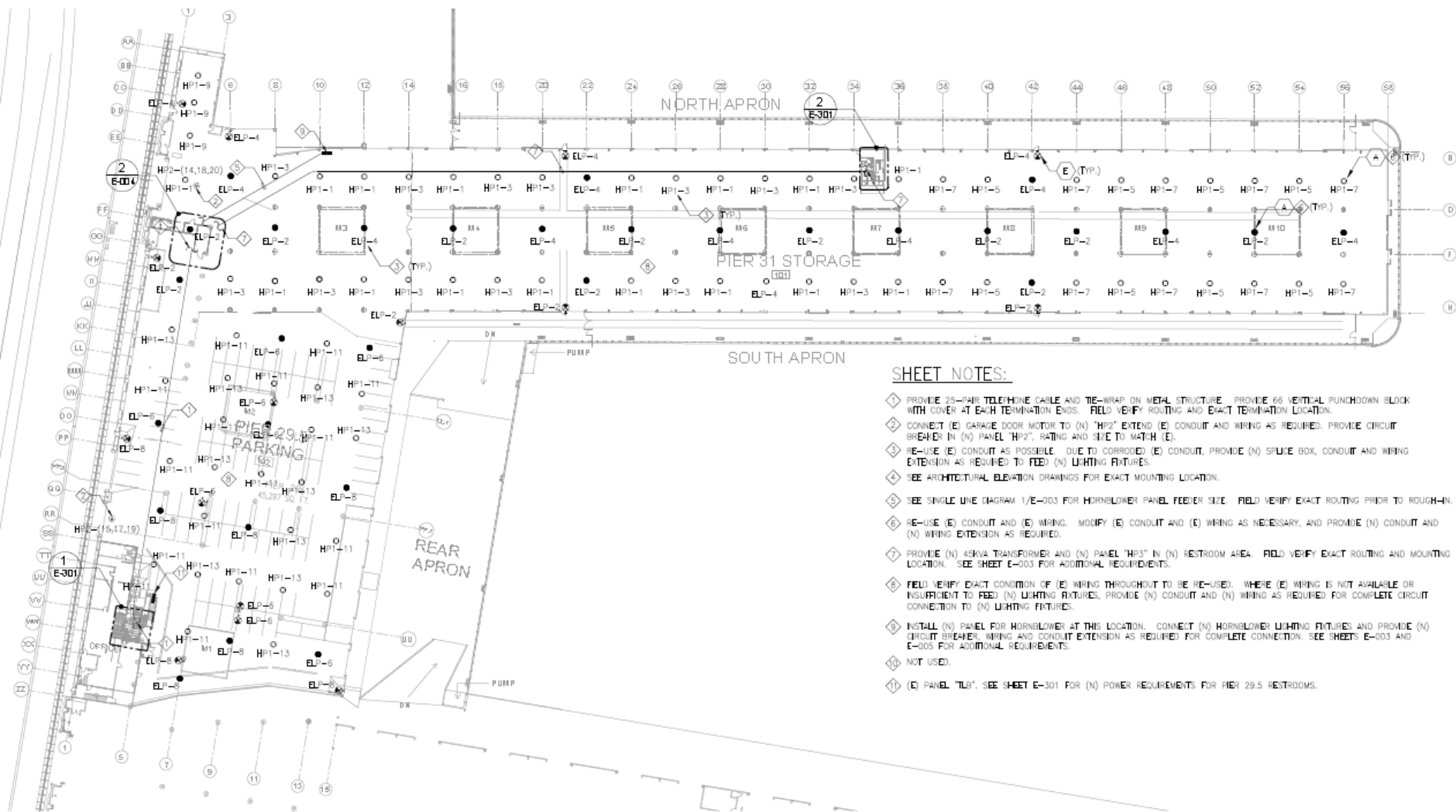


3 UTILITY ROOMS - FIRE SPRINKLER
 SCALE: 1/2" = 1'-0"

KEY PLAN



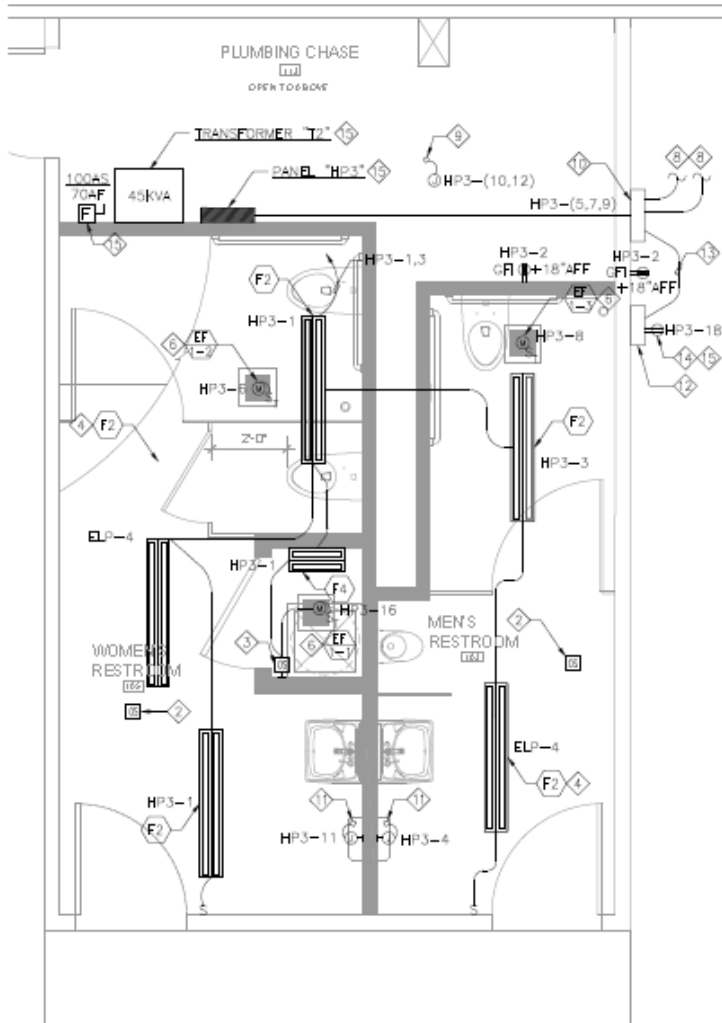
UTILITY ROOMS



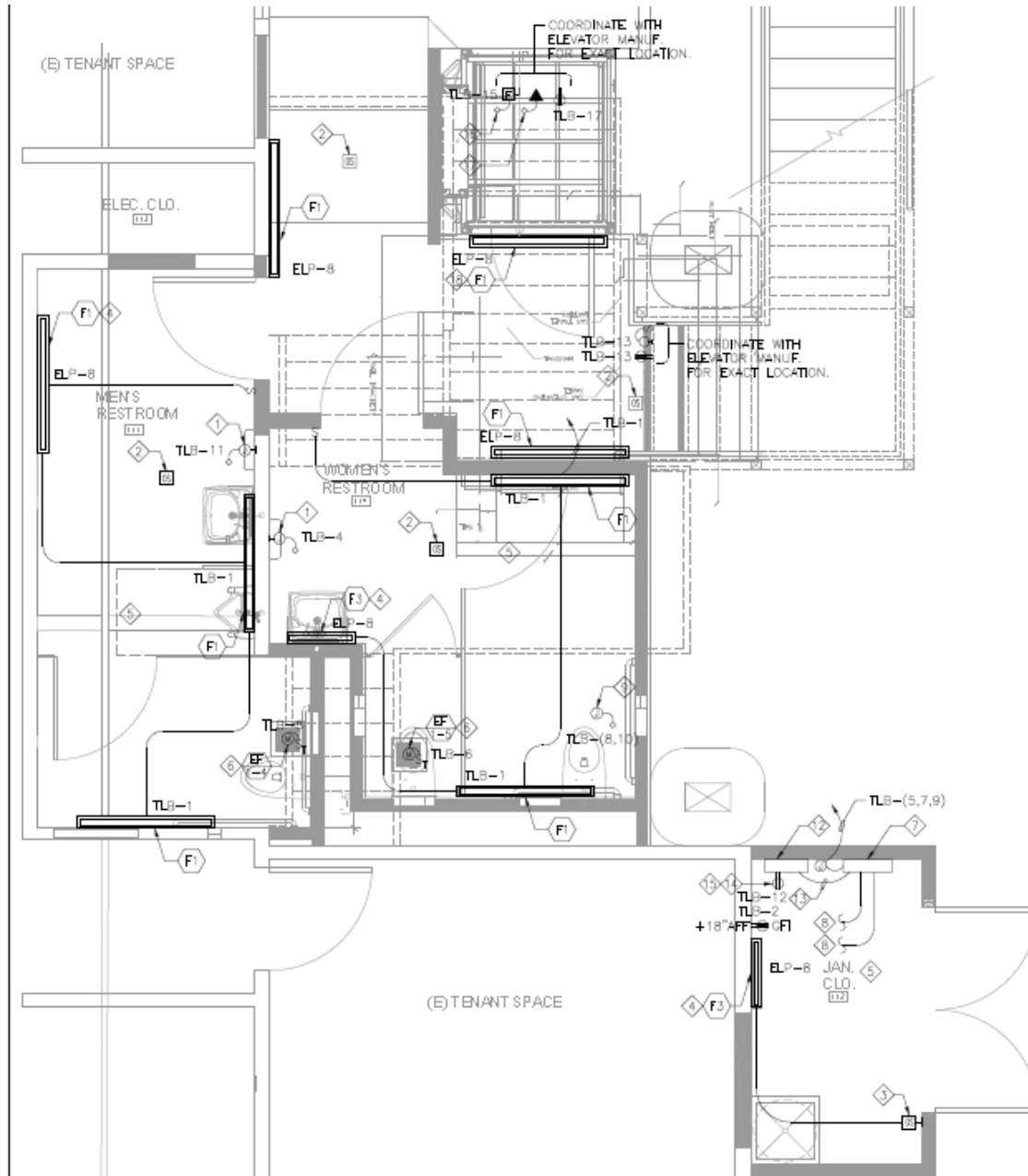
SHEET NOTES:

- ◆ PROVIDE 25-PAIR TELEPHONE CABLE AND TIE-WRAP ON METAL STRUCTURE. PROVIDE 66 VERTICAL PUNCHDOWN BLOCK WITH COVER AT EACH TERMINATION ENDS. FIELD VERIFY ROUTING AND EXACT TERMINATION LOCATION.
- ◆ CONNECT (E) GARAGE DOOR MOTOR TO (N) "HP2". EXTEND (E) CONDUIT AND WIRING AS REQUIRED. PROVIDE CIRCUIT BREAKER IN (N) PANEL "HP2", RATING AND SIZE TO MATCH (E).
- ◆ RE-USE (E) CONDUIT AS POSSIBLE. DUE TO CORROSION, (E) CONDUIT, PROVIDE (N) SPLICE BOX, CONDUIT AND WIRING EXTENSION AS REQUIRED TO FEED (N) LIGHTING FIXTURES.
- ◆ SEE ARCHITECTURAL ELEVATION DRAWINGS FOR EXACT MOUNTING LOCATION.
- ◆ SEE SINGLE LINE DIAGRAM 1/E-003 FOR HORNLOWER PANEL FEEDER SIZE. FIELD VERIFY EXACT ROUTING PRIOR TO ROUGH-IN.
- ◆ RE-USE (E) CONDUIT AND (E) WIRING. MODIFY (E) CONDUIT AND (E) WIRING AS NECESSARY, AND PROVIDE (N) CONDUIT AND (N) WIRING EXTENSION AS REQUIRED.
- ◆ PROVIDE (N) 480VA TRANSFORMER AND (N) PANEL "HP3" IN (N) RESTROOM AREA. FIELD VERIFY EXACT ROUTING AND MOUNTING LOCATION. SEE SHEET E-003 FOR ADDITIONAL REQUIREMENTS.
- ◆ FIELD VERIFY EXACT CONDITION OF (E) WIRING THROUGHOUT TO BE RE-USED. WHERE (E) WIRING IS NOT AVAILABLE OR INSUFFICIENT TO FEED (N) LIGHTING FIXTURES, PROVIDE (N) CONDUIT AND (N) WIRING AS REQUIRED FOR COMPLETE CIRCUIT CONNECTION TO (N) LIGHTING FIXTURES.
- ◆ INSTALL (N) PANEL FOR HORNLOWER AT THIS LOCATION. CONNECT (N) HORNLOWER LIGHTING FIXTURES AND PROVIDE (N) CIRCUIT BREAKER, WIRING AND CONDUIT EXTENSION AS REQUIRED FOR COMPLETE CONNECTION. SEE SHEETS E-003 AND E-005 FOR ADDITIONAL REQUIREMENTS.
- ◆ NOT USED.
- ◆ (E) PANEL "TLB". SEE SHEET E-301 FOR (N) POWER REQUIREMENTS FOR PIER 29.5 RESTROOMS.

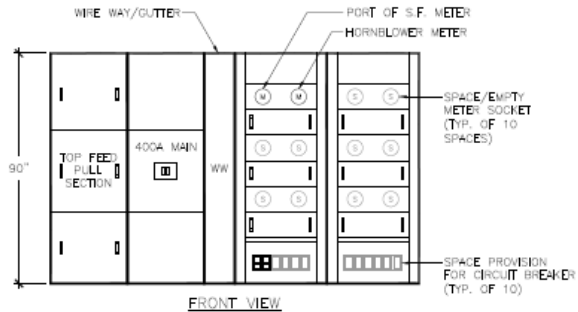
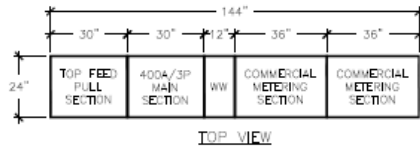
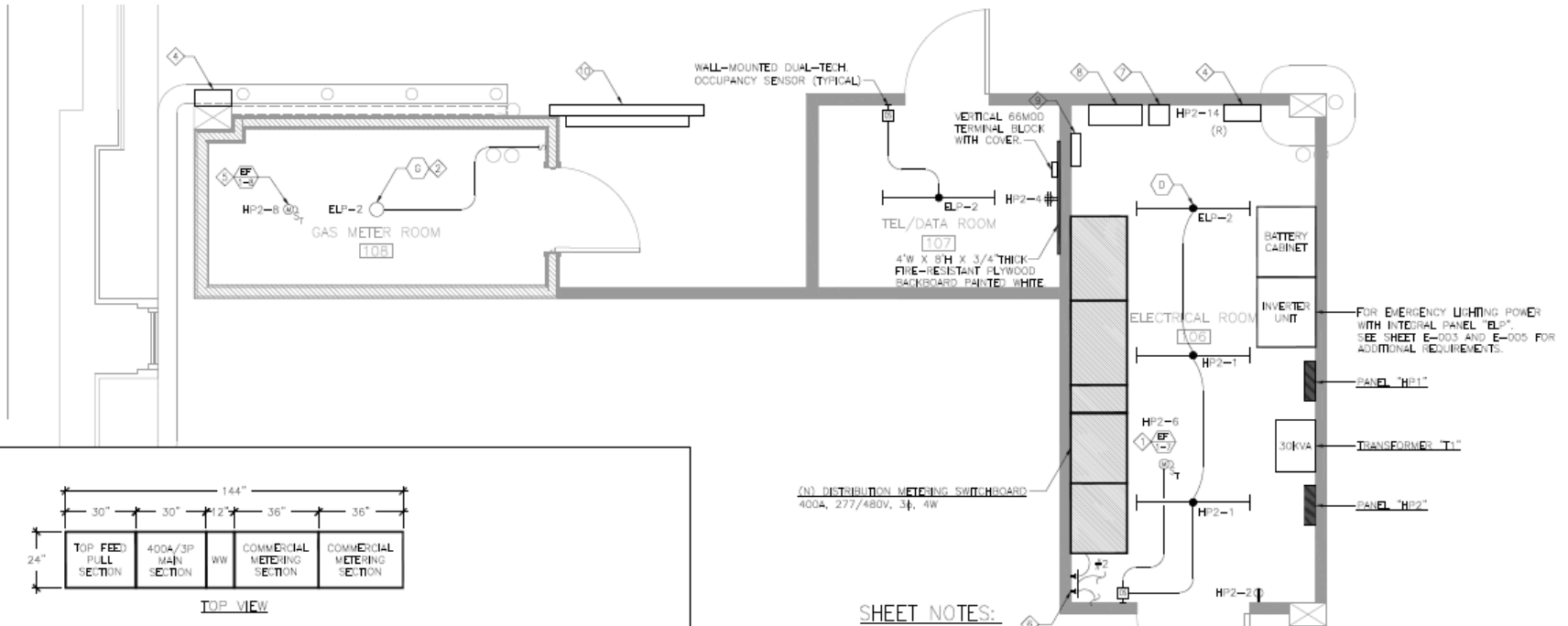
1 ELECTRICAL PLAN
E-201 102-1-10



2 PROPOSED ELECTRICAL RESTROOM PLAN AT PIER 31
 E-301 1/2" = 1'-0"



1 PROPOSED ELECTRICAL RESTROOM PLAN AT PIER 29.5
 E-301 1/2" = 1'-0"

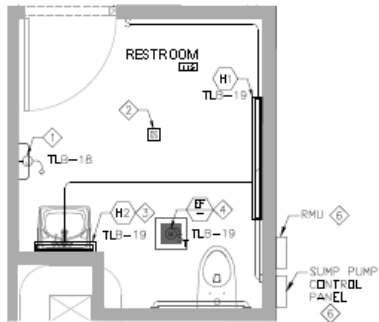


SHEET NOTES:

- 1 CONNECT (N) EXHAUST FAN TO LIGHTING CIRCUIT. PROVIDE CONTROL INTERLOCK CONNECTION WITH ROOM OCCUPANCY SENSOR WITH MINIMUM 30 MINUTE TIME DELAY. PROVIDE REQUIRED WIRING FOR CONTINUOUS OPERATION AND COMPLETE CONNECTION.
- 2 PROVIDE EXPLOSION PROOF LIGHTING FIXTURE, CONDUIT AND SWITCH. LIGHTING FIXTURE MODEL SHALL BE EV LED SERIES EXPLOSION PROOF BY CROUSE-HINDS #EVLDCX2C701 OR APPROVED EQUAL.
- 3 NOT USED.
- 4 DISCONNECT AND REMOVE (E) FIRE ALARM CONTROL PANEL. RELOCATE TO ELECTRICAL ROOM 106 AS SHOWN. EXTEND (E) FA WIRING AND CONDUIT TO (R) LOCATION. PROVIDE (N) CONDUIT AND WIRING EXTENSION AS REQUIRED FOR COMPLETE RE-CONNECTION. PROVIDE (N) POWER CONNECTION TO (N) PANEL HP2, CIRCUIT #14.
- 5 SEE MECHANICAL DRAWINGS FOR EXHAUST FAN OPERATION REQUIREMENTS.
- 6 PROVIDE 3 1/2"W X 4"L X 1/4" THICK WALL MOUNTED COPPER GROUND BAR. SEE E-003 FOR GROUNDING CONNECTION REQUIREMENTS TO (E) BUILDING STEEL STRUCTURE AND NEAREST (E) COLD WATER PIPE.
- 7 RELOCATE EXISTING LIGHTING CONTROLS.
- 8 RELOCATE EXISTING 1000VA INVERTER.
- 9 RELOCATE EXISTING PANEL THAT FEEDS EXISTING EXTERIOR LIGHTS.
- 10 SEE SHEET NOTES 7,8,9.

2 DISTRIBUTION METERING SWITCHBOARD AT PIER 31 ELEC. RM. 106
E-004 N.Y.S.

1 ENLARGED ELEC. PLAN - ELEC., TEL./DATA, AND GAS METER ROOMS AT PIER 31
E-004 1/2"=1'-0"



SHEET NOTES:

- 1 POWER FOR HAND DRYER. PROVIDE (N) CIRCUIT BREAKER IN (E) PANEL "TLB", SIZE PER MANUFACTURER. FIELD VERIFY HOMERUN CONDUIT ROUTING PRIOR TO ROUGH-IN.
- 2 CEILING MOUNTED DUAL-TECHNOLOGY OCCUPANCY SENSOR
- 3 CIRCUIT NUMBERS SHOWN IN THIS ROOM ARE FOR CLARITY OF CIRCUITING ONLY. FIELD VERIFY EXACT AVAILABLE SPARE CIRCUIT BREAKERS OR SPACES IN (E) PANEL "TLB" AND RECONFIGURE CIRCUITING AS REQUIRED. PROVIDE (N) CIRCUIT BREAKER IN (E) PANEL "TLB" AS REQUIRED TO COMPLY WITH CIRCUITING SHOWN.
- 4 CONNECT (N) EXHAUST FAN TO DESIGNATED PANEL. PROVIDE CONTROL INTER-LOCK CONNECTION WITH ROOM OCCUPANCY SENSOR WITH MINIMUM 30 MINUTE TIME DELAY. PROVIDE REQUIRED WIRING FOR CONTINUOUS OPERATION AND COMPLETE CONNECTION. EXHAUST FAN SHALL BE PANASONIC FV-15V05 SINGLE POLE 120V.
- 5 PROVIDE CIRCUIT BREAKER IN EXISTING PANEL TLB. IF THERE ISN'T SUFFICIENT SPARE IN PANEL TLB PROVIDE NEW PANELBOARD.
- 6 FURNISH AND INSTALL SUMP PUMP CONTROL PANEL AND RMU AS SHOWN ON DETAIL 1, AND NOT AS SHOWN ON DRAWING E-301.

1 ELECTRICAL RESTROOM PLAN
A-104 1/2" = 1'-0"

LIGHTING FIXTURE SCHEDULE

TAG/SYMB	DESCRIPTION	MANUFACTURER	VOLTS	QTY.	MOUNTING	WATS
(H) TLB E-301.1	LED 4' LONG WALL MOUNTED UP/DOWN LIGHTING FIXTURE	COOPER LIGHTING FAL-SAFE FIL-X-1-LED-UNV-STO/STI-40-80-E01C-NTP	UNIVERSAL (120V-277V)	1	WALL	85W
(H) TLB E-301.1	LED 2' LONG WALL MOUNTED UP/DOWN LIGHTING FIXTURE	COOPER LIGHTING FAL-SAFE FIL-X-2-LED-UNV-STO/STI-40-80-E01C-NTP	UNIVERSAL (120V-277V)	1	WALL	42.5W

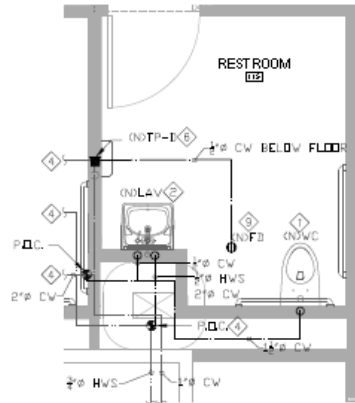
SHEET NOTES:

- 1 PROVIDE DOOR LOUVER PER ARCHITECTURAL DRAWING.
- 2 PROVIDE EXHAUST FAN MAKE/MODEL PANASONIC FV-1505.
- 3 PROVIDE SEPARATE ROOM OCCUPANCY SENSOR LOCATED AT CEILING TO CONTROL EXHAUST FAN AND LIGHTING.
- 4 DUCTWORK SHOWN IS LOCATED ABOVE THE CEILING OF RESTROOM.
- 5 ROUTE THE 6" DUCT TO THE (N) 10" EXHAUST DUCT RISER UP THRU ROOF OF BLDG. USE WITH CARE TO AVOID PENETRATIONS WHERE POSSIBLE. FIELD VERIFY FOR EXACT SIZE AND LOCATION.
- 6 PROVIDE BACK DRAFT DAMPER

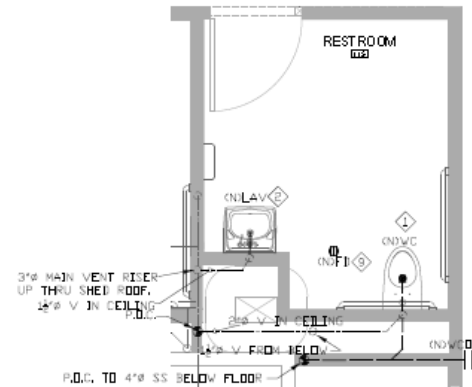
GENERAL NOTES:

- 1) ALL MECHANICAL PLUMBING SHOWN AS EXISTING ON THIS SHEET ARE THE (N) PLUMBING SYSTEM TO BE INSTALLED BY THE CONTRACTOR PER THE PLUMBING AND MECHANICAL SHEETS AND UNDER THIS CONTRACT.
- 2) CONTRACTOR IS RESPONSIBLE FOR FURNISHING AND INSTALLING ALL EQUIPMENT AND MATERIAL NECESSARY TO PROVIDE WORKING SYSTEM SHOWN HERE.
- 3) ALL SYSTEMS AND COMPONENTS SHALL BE INSTALLED PER CURRENT BUILDING CODES & STANDARDS, IN A GOOD WORKMANSHIP MANNER.

5 ENLARGED RESTROOM - MECHANICAL PLAN
A-104 1/2" = 1'-0"



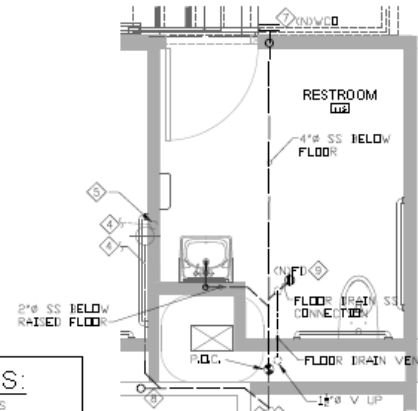
2 RESTROOM PLAN - CW AND HW
A-104 1/2" = 1'-0"



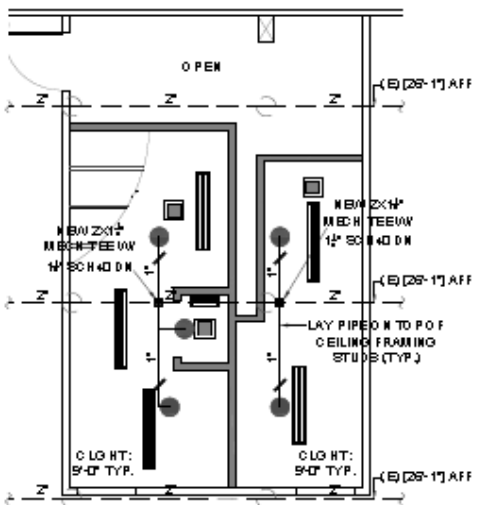
3 RESTROOM PLAN WASTE AND VENT - ABOVE FLOOR
A-104 1/2" = 1'-0"

SHEET NOTES:

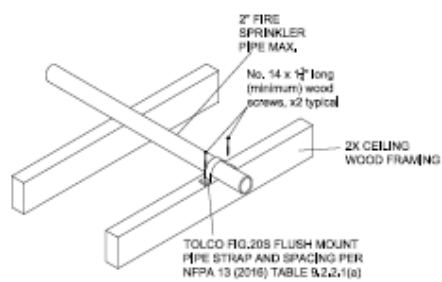
- 1 PROVIDE (N) WALL MOUNTED FLUSH VALVE WATER CLOSET AS SPECIFIED PER DWG P.0.01. COMPLETE WITH NEW 3" SS, 2" V, AND 1 1/2" CW PIPING. ALL PIPING SHALL RUN ABOVE DECK.
- 2 PROVIDE (N) WALL MOUNTED LAVATORY AS SPECIFIED PER DWG P.0.01. COMPLETE WITH NEW 2" SS, 1 1/2" V, 2" CW, AND 1" HW PIPING. ALL PIPING SHALL RUN ABOVE DECK.
- 3 NOT USED
- 4 FOR CONTINUATION PLEASE SEE PLUMBING DRAWING P2.03.
- 5 ADJUST THE LOCATION OF THE VENT RISER SO THAT IT LAND ON THE WALL SEPARATING THE RESTROOMS.
- 6 PROVIDE TRAP PRIMER DISTRIBUTION MODEL MIFAB-M-00.
- 7 INSTALL A CLEAN OUT AS SPECIFIED PER DRAWING P2.03 SHEET NOTE 15, LOCATION SHOWN HERE PREVALS.
- 8 REVISE LOCATION OF BRANCH TO CLEAR COLUMN PESTAL. MODIFY OFFICE WALL TO ACCOMMODATE PIPE. PROVIDE ARCHITECT W/FINAL LAYOUT OF PIPE AND WALL BEFORE PROCEEDING.
- 9 PROVIDE PER DWG P.0.01 (N) FLOOR DRAIN COMPLETE WITH TRAP PRIMER AS SPECIFIED PER DRAWING P.0.01 NEW 2" SS AND 1 1/2" V PIPING. NEW SANITARY SEWER AND TRAP VENT PIPING SHALL RUN ABOVE DECK.



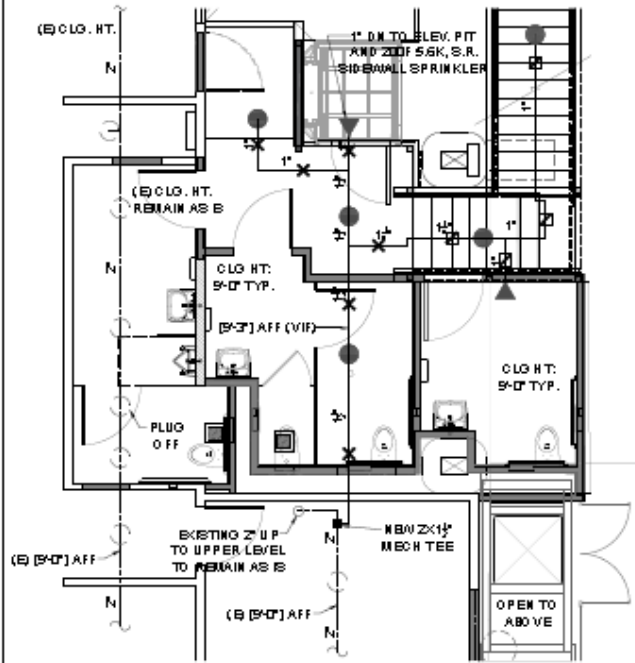
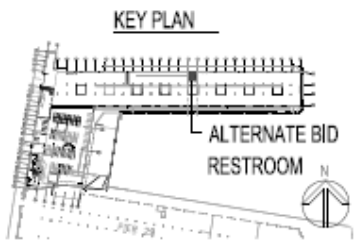
4 RESTROOM PLAN WASTE AND VENT - BELOW FLOOR
A-104 1/2" = 1'-0"



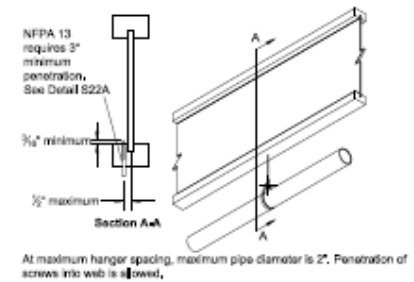
1 ALTERNATE BID
FP 1 D ENLARGED RESTROOM
 - FIRE SPRINKLER PLAN
 1/4" = 1'-0"



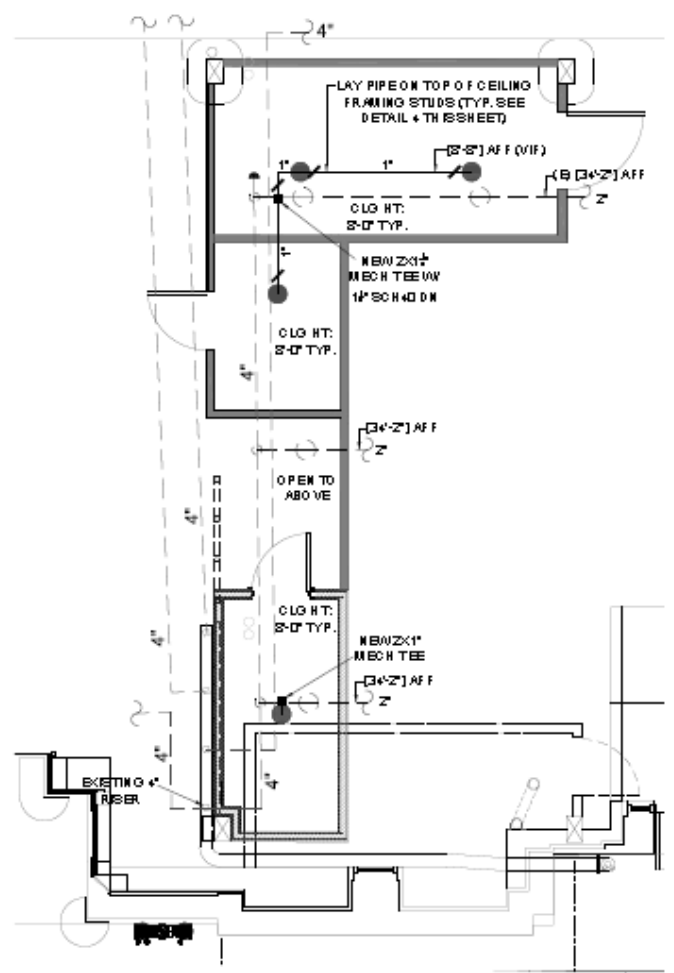
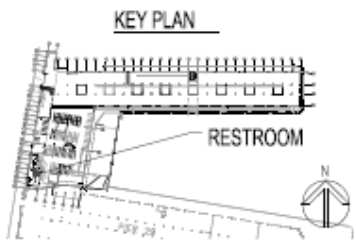
4 HANGER DETAIL ON TOP OF CEILING STUDS
FP 1 D N.T.S. SYMBOL:



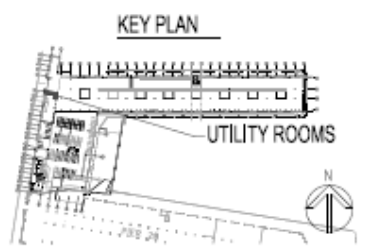
2 ENLARGED RESTROOM - FIRE SPRINKLER PLAN
FP 2 D 1/4" = 1'-0"



5 HANGER DETAIL TO BOTTOM OF JOIST
FP 1 D N.T.S. SYMBOL:



3 UTILITY ROOMS - FIRE SPRINKLER PLAN
FP 1 D 1/4" = 1'-0"



INVITATION FOR BIDS
For
Contract No. 2783
PIER 31 UTILITIES AND RESTROOM PROJECT

Pre-Bid Meeting (and ensuing Jobsite visit): May 16, 2017, at 1:30 P.M.,
Port of San Francisco Offices
Pier 1
San Francisco, CA 94111

Bid Opening Date: June 6, 2017, at 1:30 P.M.,
Port of San Francisco Offices
Pier 1
San Francisco, CA 94111

The Port of San Francisco (the "Port"), a department of the City and County of San Francisco ("City"), announces an Invitation for Bids ("IFB") for construction work on the PIER 31 UTILITIES AND RESTROOM PROJECT in San Francisco, CA. The Work will consist of repairs to doors, utility upgrades in Piers 29-1/2 and 31, and office restroom modifications, and to do all the work and furnish all the materials therefor all in accordance with the Project Specifications and Drawings as indicated in the Contract Documents.

For more information, contact the Project Engineer, Wendy Proctor at 415-274-0592.

Contract Estimate:	\$1,600,000
Time Allowed for Completion:	270 consecutive calendar days (Conditional, refer to Section 00 73 02)
Liquidated Damages:	Varies, refer to Section 00 73 02 for details
Contract Basis:	Lump Sum Bid Items With Unit Prices
License Required:	Class "B" California Contractors License
Contract Monitoring Division Local Business Enterprise ("LBE") Subcontracting Goal:	LBE = 21%

QUALIFICATIONS TO BID

1. Valid contractor's license for Class B issued by the California Contractor's State Licensing Board,
2. Contractor shall have documented experience in performing a minimum of three (3) projects with similar work as shown in the Contract Documents over the last 10 years,
3. Contractor shall have documented experience with completing a minimum three (3) public works projects over the last 10 years, and
4. Contractor safety history will be a consideration in the selection process. Along with the Bidder's Qualifications (Section 00 45 13), which is to be submitted with the Bid, attach a copy of your firm's summary for accident prevention (IIPP) and how you manage subcontractor safety.

SECTION 00 45 13

BIDDER'S QUALIFICATIONS

Refer to Section 00 21 13 (Instructions to Bidders – Contractor Bidder Qualifications) for instructions. Add additional sheets as necessary to demonstrate compliance with the requirements specified in Section 00 21 13.

1. BIDDER'S NAME:					
2. IS THIS A JOINT VENTURE? <input type="checkbox"/> Yes, <input type="checkbox"/> No; If "Yes," list name of each joint venture partner:					
3. FEDERAL ID NO.:			4. SF BUSINESS TAX REG. NO.:		
5. NAME OF RESPONSIBLE MANAGEMENT OFFICER:					
6. DID BIDDER INSPECT THE PROJECT SITE? <input type="checkbox"/> Yes, <input type="checkbox"/> No; If "Yes," list name and phone of person who did the inspection:					
7. NAME:			8. PHONE NO.:		
9. NUMBER OF YEARS BIDDER'S ORGANIZATION HAS HAD EXPERIENCE IN WORK COMPARABLE WITH THAT REQUIRED UNDER THE PROPOSED CONTRACT: _____ Years as a General Contractor _____ Years as a Subcontractor					
10. SAFETY: HAS THE CALIFORNIA DIVISION OF OCCUPATIONAL SAFETY AND HEALTH (DOSH), BETTER KNOWN AS CAL/OSHA, FEDERAL OSHA, OR ANY OTHER STATE'S OCCUPATIONAL SAFETY AND HEALTH AGENCY CITED YOUR (LOCAL) FIRM FOR ANY "SERIOUS," OR "REPEAT," VIOLATIONS OF ITS SAFETY OR HEALTH REGULATIONS IN THE PAST THREE (3) YEARS? <input type="checkbox"/> Yes, <input type="checkbox"/> No					
11. DOSH EXPERIENCE FACTOR: LIST THE EXPERIENCE RATING (ER) (WORKER'S COMPENSATION RATING BUREAU OF CALIFORNIA (WCIRB)) OF YOUR FIRM FOR EACH OF THE PAST THREE YEARS. NOTE: AN EXPERIENCE MODIFICATION, WHICH IS EXPRESSED AS A PERCENTAGE, COMPARES THE LOSS OR CLAIMS HISTORY OF ONE COMPANY TO ALL OTHER COMPANIES IN THE SAME INDUSTRY THAT ARE SIMILAR IN SIZE. GENERALLY, AN EXPERIENCE MODIFICATION OF LESS THAN 100% REFLECTS BETTER-THAN-AVERAGE EXPERIENCE, WHILE AN EXPERIENCE MODIFICATION OF MORE THAN 100% REFLECTS WORSE-THAN-AVERAGE EXPERIENCE. ACCORDINGLY, AN EXPERIENCE MODIFICATION THAT IS GREATER THAN 100% USUALLY INCREASES THE COST OF AN EMPLOYER'S WORKERS' COMPENSATION INSURANCE PREMIUMS, WHILE AN EXPERIENCE MODIFICATION THAT IS LESS THAN 100% USUALLY DECREASES THE COST OF AN EMPLOYER'S WORKERS' COMPENSATION INSURANCE PREMIUMS.					
Current year:		Previous year:		Year to previous year:	
12. DEMONSTRATION OF SAFETY: ATTACH WITH THIS DOCUMENT A COPY OF YOUR FIRM'S SUMMARY FOR ACCIDENT PREVENTION (IIPP) AND HOW YOU MANAGE SUBCONTRACTOR SAFETY.					



Learning Center



[Home](#) » [Learning Center](#) » [Online Guide to Workers' Comp](#)

California's Experience Rating System

California's workers' compensation experience rating system is a merit rating system intended to provide employers a direct financial incentive to reduce work-related accidents. The experience rating system objectively distributes the cost of workers' compensation insurance more equitably among employers assigned to particular industry classifications.

The regulations governing the Experience Rating System are contained in the *California Workers' Compensation Experience Rating Plan - 1995* (Experience Rating Plan). This plan is part of the *California Code of Regulations* (Title 10; Chapter 5, Section 2353.1) and is approved by the Insurance Commissioner. Not all employers are eligible for experience rating. See [Determining Eligibility](#).

An [experience modification](#), which is expressed as a percentage, compares the loss or claims history of one company to all other companies in the same industry that are similar in size. Generally, an experience modification of less than 100% reflects better-than-average experience, while an experience modification of more than 100% reflects worse-than-average experience. Accordingly, an experience modification that is greater than 100% usually increases the cost of an employer's workers' compensation insurance premiums, while an experience modification that is less than 100% usually decreases the cost of an employer's workers' compensation insurance premiums.

For those businesses that qualify, experience rating is mandatory. Today, more than 110,000 California businesses are experience rated, representing approximately 80% of all the workers' compensation insurance premiums paid. Using information submitted by insurers, the WCIRB calculates and publishes experience modifications for each qualified business. Regardless of which insurer provides you with your workers' compensation insurance policy, if you are experience rated, your experience modification must be applied to your policy.

We welcome your feedback on this guide. Please send comments and suggestions to marketing@wcirb.com.

California's Experience Rating System

- > [Experience Rating](#)
- > [Unit Statistical Reports](#)
- > [Experience Period](#)
- > [Determining Eligibility](#)
- > [Experience Modification](#)
- > [Experience Rating Form](#)
 - > [Heading](#)
 - > [Payroll & Expected Losses](#)
 - > [Claims & Actual Losses](#)
 - > [Rating Procedure](#)

BASE BID

ADDITIVE ALTERNATES

Copyright ©2017 City & County of San Francisco

2783

SCHEDULE OF BID PRICES

Bid Item No	Bid Item Description	Estimated Quantity	Unit*	Extension
1	Utility and restroom work as indicated on plans and specifications excluding bid items 2, 3 & 4 and alternate bid items	1	LS	\$ _____
2	Wheelchair Lift	1	LS	\$ _____
3	Partnering Allowance	1	AL	\$15,000
4	Mobilization Lump Sum (Maximum 5% of the sum of Bid Items 1 & 2)	1	LS	\$ _____
TOTAL BASE BID PRICE				\$ _____

*Note: LS = Lump Sum; EA= Each; LF = Linear Feet; SF = Square Feet; CY = Cubic Yards; AL = Allowance

Alternate No	Alternate Description	Estimated Quantity	Unit	Unit Price	Extension
A1	Ship water supply	1	LS	\$ _____	\$ _____
A2	Restroom work in Pier 31 shed	1	LS	\$ _____	\$ _____
A3	Steel window work	57	EA	\$ _____	\$ _____
A4	Concrete crack repairs	900	LF	\$ _____	\$ _____

Notes:

1. Alternates shall cover all costs of alternate Work as indicated on the Bid Documents only and shall not include Work of Base Bid or any Bid items of the Total Bid Price. Alternate prices shall include markups for overhead and profit. The Bidder shall be responsible to indicate by using plus (+) or minus (-) signs whether alternate amounts are intended to be added to, or subtracted from, the Total Bid Price.
2. The City will make the actual addition of Alternates to or subtraction of Alternates from the Total Bid Price. In case an additive Alternate amount does not include a plus or minus sign, the amount will be presumed to be additive to the Total Bid Price. In case a deductive Alternate amount does not include a plus or minus sign, the amount will be presumed to be deductive from the Total Bid Price.

ALTERNATES: The following alternates will be selected by the City in a specific descending order of priority which will be announced immediately before the opening of the Bids. In addition, the amount available in the construction budget will be announced immediately before the opening of the Bids.

The Contract, if awarded, will be awarded to the responsible Bidder who submits the lowest responsive Bid based on the lowest overall cost to the City for the Total Bid Price with or without additive or deductive alternate(s) selected by the City in a descending order of priority as follows:

1. If the Total Bid Price of the responsible Bidder who submits the lowest responsive Bid does not exceed the construction budget amount, then the Contract will be awarded to the responsible Bidder who submits the lowest responsive Bid and whose Total Bid Price and greatest number of additive alternates selected by the City in a descending order of priority do not exceed the construction budget amount.
2. If the Total Bid Price of the responsible Bidder who submits the lowest responsive Bid exceeds the construction budget amount, then the Contract will be awarded to the responsible Bidder who submits the lowest responsive Bid and whose Total Bid Price and least number of deductive alternates selected by the City in a descending order of priority do not exceed the construction budget amount.

The City reserves the right to award to the responsible Bidder who submits the lowest responsive Bid based on:

- a. the Total Bid Price and all deductive alternates in the event that the Total Bid Price and all deductive alternates exceeds the construction budget amount, or
- b. the Total Bid Price without alternates in the event that the Total Bid Price exceeds the construction budget amount and there are no deductive alternates.

The Bidder further proposes and agrees that if an Alternate is incorporated in the Contract within up to **90 DAYS** after the date of the City's written notification of award of the Contract, the Contract Sum will be adjusted by the addition of the Alternate Price bid for the selected Alternate.

All contractors and subcontractors who bid or work on a public works project register and pay an annual fee to the California Department of Industrial Relations (“DIR”). No contractor or subcontractor may be listed in a bid for a public works project unless registered with the DIR as required by Labor Code section 1725.5 [with limited exceptions from this requirement for bid purposes only under Labor Code section 1771.1(a)]. No contractor or subcontractor may be awarded a contract for public work on a public works project unless registered with the DIR pursuant to Labor Code section 1725.5.



CMD ATTACHMENT 1

Requirements for Construction Contracts

For Contracts \$300,000 & over that are Advertised on or after August 1, 2016

PRE - BID Presentation
Finbarr Jewell – CMD

Local Business Enterprise Goal = **21%**

Local Business Enterprise Utilization Tracking System (LBEUTS)

1.3 LBE SUBCONTRACTOR PARTICIPATION

- A. The LBE subcontractor participation goal for this Contract is 21 percent.
 1. Pursuant to Section 14B.9 of the Administrative Code, bidders are hereby advised that the availability of Minority Business Enterprises (MBE), Woman Business Enterprises (WBE) and Other Business Enterprises (OBE) to perform subcontract work on this project is as follows:
10.1 % MBE; 1.7% WBE; 9.2% OBE.

1.5 GOOD FAITH EFFORTS REQUIREMENTS

- A. In accordance with Sections 14B.8(D) and (E), all bidders, unless they meet the exception noted below, shall submit documented good faith efforts with their bids and must achieve 80 out of 100 points to be deemed responsive. Refer to CMD Form 2B for more details.
- B. Exception: Bidders who demonstrate that their total LBE participation exceeds by **35%** the subcontracting goal for this contract (as specified in paragraph 1.3A above) will not be required to conduct good faith efforts or to file evidence of good faith efforts. For this Contract, the total LBE participation for which the exception applies (LBE goal plus 35% of LBE goal) is equal to **28.35%**.



The screenshot shows the Contract Monitoring Division website. The header includes the city seal and the text 'Contract Monitoring Division'. A navigation bar contains links for '12B Equal Benefits Program', '14B Local Business Enterprise Ordinance', 'Programs Under the 14B LBE Ordinance', 'Public Notices, Announcements & Reports', and 'Contact'. The main content area is titled 'LBE Compliance' and contains text explaining the purpose of the LBE Ordinance and a list of assistance programs: Prime & Subcontracting Opportunities, Joint Venture Opportunities, Set Asides for participation by LBE certified firms, and Bonding and Financial Assistance. Below this is a list of services provided by the Local Business Enterprise Contract Compliance Team, including monitoring the solicitation process, setting participation goals, providing workshops, assessing bidder eligibility, determining compliance, investigating complaints, and tracking participation. At the bottom, there are buttons for '14B Administrative Code', '14B Rules and Regulations', 'Important Forms', and 'LBE Tracking System (LBEUTS)'. A sidebar on the right includes '14B LOCAL BUSINESS ENTERPRISE ORDINANCE', 'LBE Certification', 'LBE Compliance', 'Local Business Enterprise Advisory Committee (LBEAC)', 'Weekly Workshop Series', a 'SHARE THIS' button, a language selection dropdown, and social media icons for Facebook, Twitter, and YouTube.

Labor Standards Resources

The current prevailing wage rates are available on the Internet, or from OLSE or the Contracting Department. For specific information about prevailing wage requirements you can visit the websites listed below:



OFFICE OF LABOR STANDARDS ENFORCEMENT 415-554-OLSE (6573)

California law requires that workers employed on City funded projects be paid not less than the prevailing wage rate.

KEY ELEMENTS OF PREVAILING WAGE MONITORING

- Monitor jobsites and interview employees regarding rates of pay and the craft jurisdiction of work performed.
- Review certified payroll records, inspector's logs, sign-in sheets, and employee paychecks to verify proper payment of prevailing wages, appropriate classification of workers, correct payroll deductions, adherence to apprenticeship regulations, and other labor standards.
- Investigate discrepancies and complaints and take corrective action.
- Seek penalties and debarment of contractors, if necessary.

If you have any questions or require additional information, please call 415-554-OLSE (6573).
Si usted tiene preguntas o requiere más información, favor de llamar al número 415-554-OLSE (6573).
Kung meron kayong katanungan o kailangang information, tumawag sa 415-554-OLSE (6573).

如有任何問題，或需要其他資料，請打電話☎ 415-554-OLSE (6573)

Если у Вас есть какие-либо вопросы, или Вам нужна дополнительная информация, пожалуйста, позвоните по телефону 415-554-OLSE (6573).

Office of Contract Administration, OLSE • City Hall, Room 430 • 1 Dr. Carlton B. Goodlett Place • San Francisco, CA 94102

Created and produced by the CCSF Reproduction and Mail Services

CITY AND COUNTY OF SAN FRANCISCO

EDWIN M. LEE, MAYOR

OFFICE OF LABOR STANDARDS ENFORCEMENT
DONNA LEVITT, MANAGER



Pre-Bid and Pre-Construction Information Labor Standards Requirements

Requirements for contractors and subcontractors bidding public works contracts in the City and County of San Francisco:

- Proper Contractors' Licenses at the Time of Bid
- Current Public Works Contractor (PWC) Registration with the Department of Industrial Relations
- List Subcontractors at the Time of Bid
- Pay Employees the Correct Prevailing Wage Rates for Each Craft, Classification and Type of Work Performed
- If Employees Perform Multiple Crafts, Keep Accurate Records & Pay Prevailing Wage for Each Craft
- Workers Compensation Coverage
- Submit Certified Payroll Records in the Elation Electronic System
- Submit Fringe Benefits Statement in the Elation Electronic System
- Furnish Employees with Itemized Pay Stubs and Retain Payroll Records
- Employ Electricians Certified by Division of Labor Standards Enforcement
- Employ Apprentices Registered in a State-Approved Apprenticeship program
- Make Apprenticeship Training Contributions
- Cooperate with OLSE Jobsite Visits and Employee Interviews
- Use OLSE Daily Sign In Sheet with each Worker Signing In and Out
- Display OLSE Posters at the Jobsite, Informing Workers of the Prevailing Wage Requirements.
- Penalties of \$50-\$200 per Worker per Day Apply for Non-payment of Prevailing Wage
- Comply with Local Labor Laws including the *San Francisco Paid Sick Leave Ordinance* and the *Health Care Security Ordinance* for Work Performed Within the Geographic Boundaries of the City & County of San Francisco

OLSE Website	www.sfgov.org/olse (select Prevailing Wage option) <ul style="list-style-type: none"> Sign in Sheets CPR Form Paid Sick Leave Ordinance Health Care Security Ordinance OLSE Video SF Administrative Code, Chapter 6 Link to Elation Systems
DIR Prevailing Wage Rates	http://www.dir.ca.gov/OPRL/PWID/
DIR Public Works Manual	https://www.dir.ca.gov/dlse/PW_Manual_FINAL%20REVISED.pdf
Apprentice Wage Rates	http://www.dir.ca.gov/DAS/PWAppWage/PWAppWageStart.asp
Apprenticeship Programs, Requirements & Forms	Public Works Projects/Public Works Information <ul style="list-style-type: none"> Interactive Databases Forms http://www.dir.ca.gov/DAS/PublicWorksForms.htm
Contractors State License Status	https://www2.cslb.ca.gov/OnlineServices/CheckLicense/CheckLicense.aspx

Contractors are encouraged to call OLSE for information or to answer any questions about labor standards requirements. Our telephone number is: (415) 554-6235.

City and County of San Francisco
Edwin M. Lee
Mayor

Office of Labor Standards Enforcement
Donna Levitt, Manager



DAILY SIGN-IN SHEET

INSTRUCTIONS: EACH WORKER MUST SIGN THEMSELVES IN AND OUT/ CADA TRABAJADOR DEBE DE MARCAR SU PROPIO TIEMPO A LA ENTRADA Y LA SALIDA / 每個工人必須自己親自上下班簽到。

PROJECT NAME / SPEC #	DATE/日期	NAME/NOMBRE/姓名	EMPLOYER/雇主	CRAFT/工種	APPRENTICE (A) or JOURNEYMAN (J)	TIME IN	TIME OUT



Home > Educational Presentations & Materials

Educational Presentations & Materials

Elation System Trainings for Electronic Certified Payroll

Even if someone has already attended our payroll training, it is necessary for them to attend the Local Business Utilization and Local Hire Reporting Training if they work in these areas. We anticipate that eventually all contractor and consultants will need to attend this training. If someone is new to Elation Systems and has not attended the payroll reporting training, please plan to attend both classes.

TRAINING is offered on the following dates:

	Local Business Utilization, Section 3 and Local Hire Training
Payroll Reporting Training (construction contracts only) (2 nd Tuesday of the Month)	(construction and professional service contracts) (4 th Tuesday of the Month)
Tuesday, January 10, 2017	Tuesday, January 24, 2017
Tuesday, February 14, 2017	Tuesday, February 28, 2017
Tuesday, March 14, 2017	Tuesday, March 28, 2017
Tuesday, April 11, 2017	Tuesday, April 25, 2017
Tuesday, May 09, 2017	Tuesday, May 23, 2017
Tuesday, June 13, 2017	Tuesday, June 27, 2017
Tuesday, July 11, 2017	Tuesday, July 25, 2017
Tuesday, August 08, 2017	Tuesday, August 22, 2017
Tuesday, September 12, 2017	Tuesday, September 26, 2017
Tuesday, October 10, 2017	Tuesday, October 24, 2017
Tuesday, November 14, 2017	Tuesday, November 28, 2017

Time:

9:30 am - 10:30 am - City Staff
10:30 am - 12:00 pm - City Contractors & Subcontractors

Location:

City Hall, Room 421
1 Dr. Carlton B. Goodlett Place
San Francisco, CA 94102-4685

For questions, please contact Jimmy Hewitt at (415) 554-9847, james.hewitt@sfgov.org

Alternate contact: Cynthia Torres (415-554-9844), cynthia.torres@sfgov.org

SHARE THIS

Select Language

Powered by Google Translate

STAY CONNECTED



LOCAL HIRE



SAN FRANCISCO
Office of Economic and Workforce Development

- Home
- About Us
- Business Assistance
- Development
- Workforce**
- Neighborhoods
- International
- Special Initiatives

- Home
- Workforce
- Employer Services

Local Hire

In December of 2010, the San Francisco Board of Supervisors approved amendments to Chapter 6.22(g) of the San Francisco Administrative Code and adopted the San Francisco Local Hiring Policy for Construction ("Policy"). The Policy became one of the strongest pieces of legislation in the country to promote the utilization of local residents on locally sponsored projects.

The Office of Economic and Workforce Development (OEWD) administers the Local Hiring Policy for Construction.



Projects Covered by the Local Hiring Policy

Public Works or improvement projects with an engineer's estimate of \$600,000 or more and advertised for bid on or after March 25, 2011 are covered by the Local Hiring Policy for Construction.

City-funded construction projects covered by the Policy can be found on the [Office of Contracts Administration](#) website.

Trade Exemptions

The [Trade Exemptions List](#) designates trades for which the Policy shall not be applicable. Work hours for designated trades are exempt from the requirements. Please review the [Criteria for Trade Exemption Summary](#) for additional information.

CityBuild Employer Services

If you are an employer in the City of San Francisco and would like more information about CityBuild services for employers please visit the [CityBuild Employer Services](#) page. To download forms related to the Local Hiring Policy and other workforce hiring policies, please visit the [CityBuild Workforce Forms](#) page.

Local Hiring Forms Submission "How-To" Video

In an effort to assist contractors in submitting the required Local Hiring forms online via Elation Systems, OEWD has created a "How-To" video.

Workforce

Overview

About Workforce

Job Seeker Services

Employer Services

First Source Hiring Program

Recruitment Assistance

On the Job Training

Rapid Response

CityBuild Employment Networking Services

CityBuild Forms

Local Hire

Frequently Asked Questions - Business Assistance

Provider & Grantee Resources

Workforce Investment Board

Success Stories

SHARE THIS

San Francisco Local Hiring Policy for Construction Fact Sheet

Overview

- Applies to contracts for public work or improvement projects in excess of \$600,000.
- The mandatory participation level is 30% of all project hours within each trade to be performed by local residents.
- At least 50% of the project work hours performed by apprentices within each trade shall be performed by local residents.
- A local resident is defined as an individual who is domiciled within the City and County of San Francisco at least 7 days prior to commencing work on the project. An individual may have only one domicile, which is their principal residence and where they intend to return when they are absent.

Guidelines

- Form 1: Local Hiring Workforce Projection. Must be submitted to CityBuild through the Elation Systems. Contractors are required to identify trades, contractors and estimated total and local work hours to be utilized on the project.
- Form 2: Local Hiring Plan. Must be submitted to and approved by CityBuild through the Elation Systems for project with engineer estimates in excess of \$1,000,000. Contractors are required to identify trades, contractors, total and local journey and apprentice work hours to be utilized on the project.
- **Elation Systems:** All contractors will be required to submit certified payroll for all workers through the Elation Systems. An Elation account is required to access the system.

Penalties

- The ordinance establishes various consequences of non-compliance with the policy, including the authority of assessment of penalties against contractors that do not meet the local hiring requirements.
- The penalty for failing to meet the local hiring requirement shall be the amount equal to the journeyman or apprentice prevailing wage rate for the primary trade used by the contractor for each hour the contractor fell short.
- Contractors may request a conditional waiver from local hiring requirements on a project-specific basis for “specialized trades,” by receiving credit for local hiring on non-covered projects, or sponsoring new apprentices.

QBD ⇒ ADDENDUM

SECTION 00 43 20

DOCUMENT 00 21 14

QUESTIONS ON BID DOCUMENTS (QBD)

Potential Bidders must complete this QBD Form and submit to the address below no later than three (3) business days before the bid opening date.

Project: PIER 31 UTILITIES AND RESTROOM PROJECT

Contract No. 2783

To: Port of San Francisco
 Pier 1, The Embarcadero
 San Francisco, CA 94111
 Tel: 415-274-0592 Fax: 415-274-0551
 Attention: Wendy Proctor
 Email: Wendy.Proctor@sfport.com

City Use Only	
QBD No.	
Received by:	
Date Received:	
Addendum Issued?	<input type="checkbox"/> Yes <input type="checkbox"/> No
Date Sent Response:	

CONTRACTOR'S QUESTIONS

Company Name: _____	Date _____
Contact Name: _____	Tel: _____
Title: _____	Fax: _____
<i>Check One Only (Use separate form for each specifications and drawing question.)</i>	
<input type="checkbox"/> Spec. Section: _____	Paragraph(s): _____
<input type="checkbox"/> Drawing Sheet: _____	Detail(s): _____

Question: _____

CITY'S REPLY

Mark this box if the QBD can be answered by Bidder's review of the documents. Reply with location(s) where the information can be obtained.

Reply: _____

By: _____ Bureau/Firm: _____ Date: _____

The reply is an answer to a Bidder's question. The reply does not change the Bid Documents unless the information contained therein is issued in an Addendum. At the sole discretion of the City, the question and reply may be returned to the questioner and distributed to all bidding general contractors for informational purposes.

ACKNOWLEDGMENT OF RECEIPT OF ADDENDA

If Addenda to the Bid Documents have been issued for this Contract, please indicate receipt thereof by filling in the appropriate Addendum number and filling in date received below. If there are any questions on any Addenda that may have been issued, please contact Wendy Proctor, City and County of San Francisco, Port of San Francisco, Pier 1, The Embarcadero, San Francisco, CA 94111, telephone 415-274-0592.

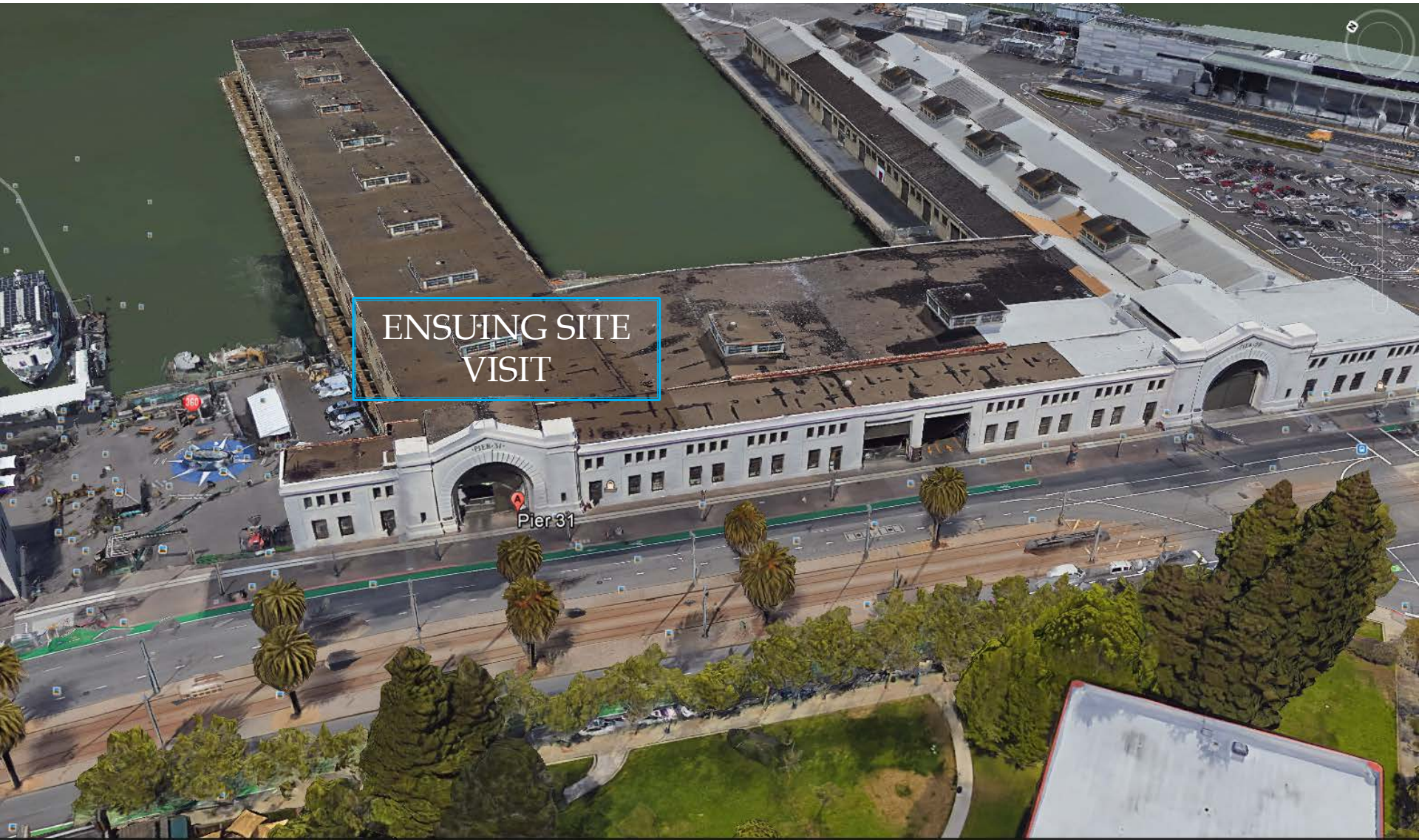
Addendum No. _____	Date Received _____
Addendum No. _____	Date Received _____
Addendum No. _____	Date Received _____
Addendum No. _____	Date Received _____
Addendum No. _____	Date Received _____
Addendum No. _____	Date Received _____
Addendum No. _____	Date Received _____
Addendum No. _____	Date Received _____
Addendum No. _____	Date Received _____
Addendum No. _____	Date Received _____

A BID MAY BE RENDERED NONRESPONSIVE IF THE BIDDER DOES NOT ACKNOWLEDGE THE RECEIPT OF ALL ADDENDA WHICH MAY HAVE BEEN ISSUED FOR THIS CONTRACT.

Note: The above form is part of the Bid. Signing the Bid Form (Section 00 41 00) shall also constitute signature of this form and Bidder acknowledges that information provided above is true and correct.

END OF SECTION

SITE VISIT



Questions?



MTG @ PIER 1
Pre-Bid Site-Walk



May 16, 2017 3:00 p.m.
 1:30

Contract 2783 Pier 31 Utilities and Restroom Project

SIGN-IN SHEET

Name	Company	Phone	Email
Wendy Proctor	Port of SF	415-274-0592	Wendy.Proctor@sfport.com
Alan Gin	Port of SF	415-274-0589	alan.gin@sfport.com
KABILAN	ARANA GROUP	415-656-0129	kp.aranagroup@gmail.com
RATESH	"	"	"
Jonathan Wickman	Wickman Development	415-215-3473	jonathan@wickmandev.com
Mikel Hernandez	AK Builders	915-559-9312	
Reza Davar	TP Windows	415-255-7070	salos@sfwindowforestry.com
MANOUSH ADIB ADON		(415) 615-2342	info@adoninc.com
Kenneth Kelly	Anchor Kelly	415-575-3700	kenneth@anchor-kelly.com
Matthew Huey	MHC	415-274-0631	mhuey@jmc.com



Name

Company

Phone

Email

Pre-Bid Site-Walk

May 16, 2017 1:30 p.m.



Contract 2783 Pier 31 Utilities and Restroom Project

SIGN-IN SHEET

Name	Company	Phone	Email
Wendy Proctor	Port of SF	415-274-0592	Wendy.Proctor@sfport.com
Alan Gin	Port of SF	415-274-0589	alan.gin@sfport.com
KABILAN	ARANA GROUP	415-656-0129	kp.aranagroup@gmail.com
MARBUCH ADIB	ADCON (USA)	615 2342	info@adconinc.com
Reza Davari	TP Windows	415-255-2930	sales@sfwindowfactory.com
ALEX RUIZ	AMONE Corp	415-826-9678	alex@amonecorp.com
Mike Hanneau	KEK Builders	415-559-9312	mike.hanneau@kek.com
KEVIN X. RALLY	Angotti Peilly	415 575 3700	Kevin.Rally@Angotti-Peilly.com
Toby Lee	MHC	415-512-7101	toby.lee@mhcengr.com
JOSE HERRERA	PORT OF SF	415-274-0555	jose.herrera@sfport.com
Matthew Huey	MHC Construction	415 271-0631	michuey@gmail.com
WINNIE LEE	PORT OF SF	415-274-0567	Winnie.Lee@SFPort.com
Kevin Dang	MHC	925-200-7369	mikekevin.dang@gmail.com
Jonathan Wickman	Wickman Development And Construction	415-215-3473	jonathan@wickmandev.com