

- NOTES**
1. DIMENSIONS SHOWN ARE BASED ON AS-BUILT DRAWINGS PROVIDED BY THE PORT OF SAN FRANCISCO.
 2. THE CONTRACTOR SHALL VERIFY ALL EXISTING CONDITIONS AND PROPOSE DIMENSIONS AT THE JOB SITE BEFORE PROCEEDING WITH ANY WORK. COMPARE ARCHITECTURAL DRAWINGS WITH STRUCTURAL, MECHANICAL AND ELECTRICAL DRAWINGS. NOTIFY ARCHITECT OF ANY DISCREPANCIES AND DO NOT PROCEED WITH AFFECTED WORK UNTIL THEY ARE RESOLVED.

CH
Creagan+D'Angelo
 INFRASTRUCTURE
 ENGINEERS

170 Columbus Ave., Suite 240
 San Francisco, CA 94133
 Tel: (415) 894-2010
 Fax: (415) 894-2011
 www.cdengineers.com



ARCHITECT:
 CH Engine Co. No. 2
 460 Bush Street
 San Francisco, CA 94108
 415.773.0773 F. 415.773.1773

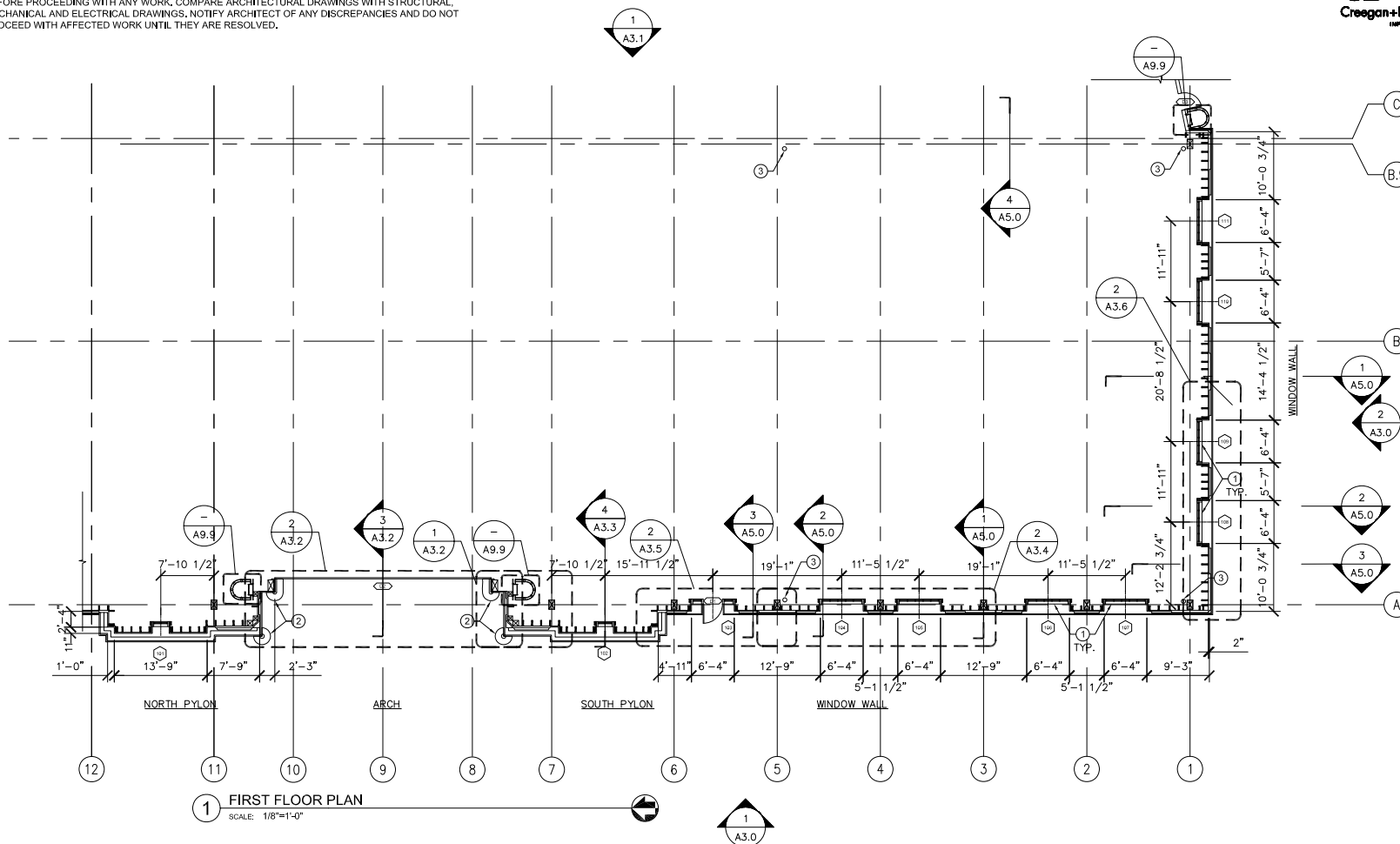


GENERAL NOTES

1. ALL WINDOWS HAVE BEEN CATALOGED AND SALVAGED FOR REINSTALLATION. SEE SHEETS A7.0 AND A7.1 FOR WINDOW SCHEDULE.
2. WALL FRAMING TO REMAIN TO BE DETERMINED BY STRUCTURAL ENGINEER.
3. SEE STRUCTURAL DRAWINGS FOR HEAVY TIMBER REPLACEMENT.
4. SHEATH FRAMED WALL IN PLYWOOD PER STRUCTURAL DRAWINGS.
5. WALL CLADDING FROM BASE TO BOTTOM OF CORNICE IS TRADITIONAL THREE COAT CEMENT PLASTER, CORNICE, QUOINS AND VOUSOIRS ARE EXTERIOR INSULATION FOAM SYSTEM (EIFS).
6. INSTALL NEW ROLL UP DOORS AT ARCH.
7. S.S.D. FOR NEW CONCRETE CURB AT ARCH OPENING.
8. PAINT ALL INTERIOR WOOD BELOW TOP SILL.

KEY NOTES

- ① WINDOWS TO BE REPAIRED OR FABRICATED OFF SITE. REINSTALL WINDOWS IN COORDINATION WITH CEMENT PLASTER AND EIFS WORK.
- ② PROTECT WHEEL GUARDS IN PLACE.
- ③ SEE MECHANICAL DRAWINGS FOR NEW DRAIN LOCATIONS.



NO.	DATE	DESCRIPTION	BY	APP.
0	10/9/12	PERMIT SUBMITTAL	SN	NG
TABLE OF REVISIONS				
CHECK WITH TRACING TO SEE IF YOU HAVE LATEST REVISION				

REFERENCE INFORMATION
 & FILE NO. OF SURVEYS



SAN FRANCISCO PORT COMMISSION
PORT OF SAN FRANCISCO
 DEPARTMENT OF ENGINEERING

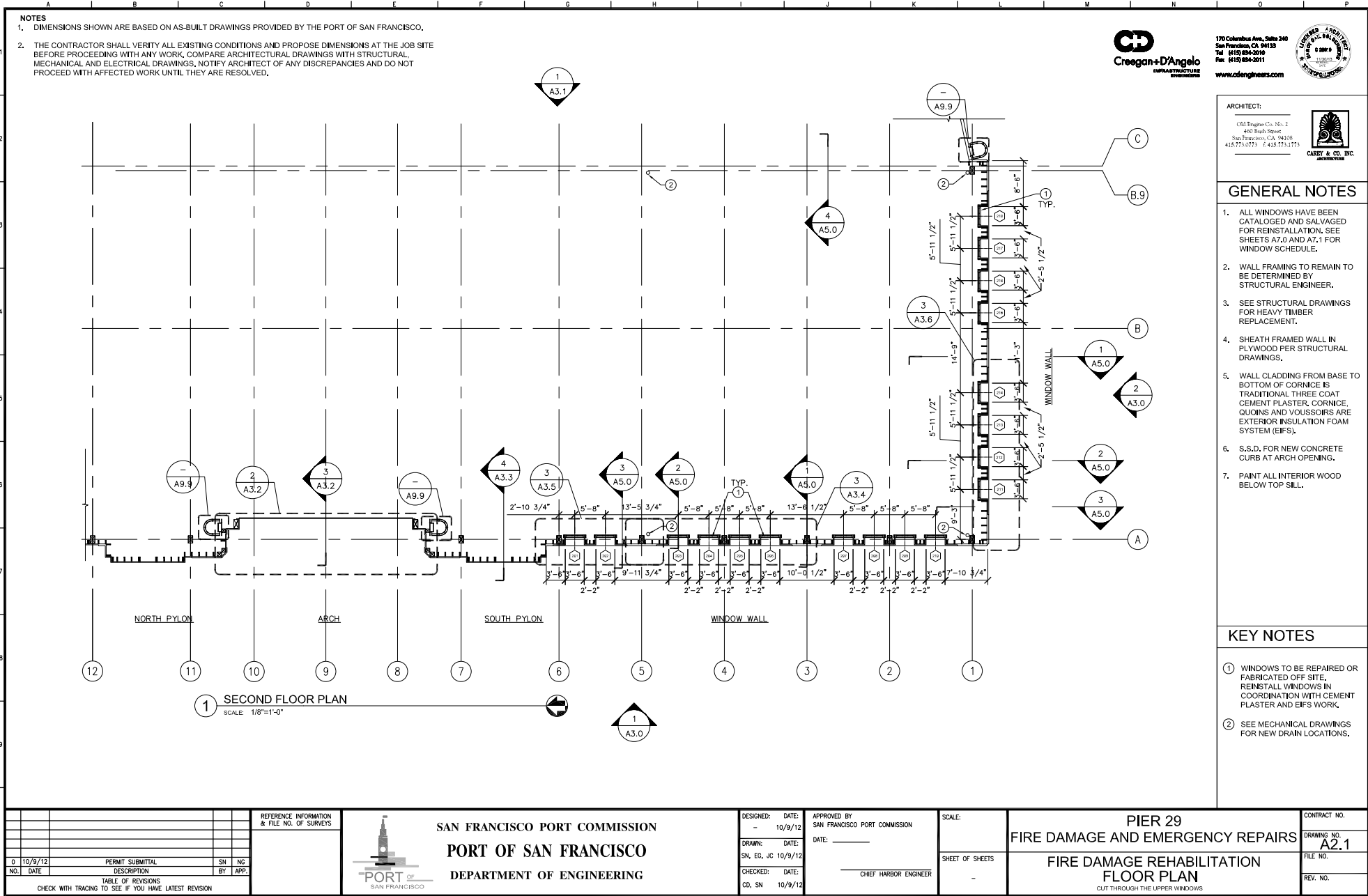
DESIGNED: DATE: 10/9/12
 -
 DRAWN: DATE: 10/9/12
 SN, EG, JC
 CHECKED: DATE: 10/9/12
 CD, SN

APPROVED BY: SAN FRANCISCO PORT COMMISSION
 DATE: _____
 CHIEF HARBOR ENGINEER

SCALE:
 SHEET OF SHEETS
 -

PIER 29
FIRE DAMAGE AND EMERGENCY REPAIRS
FIRE DAMAGE REHABILITATION
FLOOR PLAN
 CUT THROUGH THE LOWER WINDOWS

CONTRACT NO.
 DRAWING NO. **A2.0**
 FILE NO.
 REV. NO.



- NOTES
1. DIMENSIONS SHOWN ARE BASED ON AS-BUILT DRAWINGS PROVIDED BY THE PORT OF SAN FRANCISCO.
 2. THE CONTRACTOR SHALL VERIFY ALL EXISTING CONDITIONS AND PROPOSE DIMENSIONS AT THE JOB SITE BEFORE PROCEEDING WITH ANY WORK. COMPARE ARCHITECTURAL DRAWINGS WITH STRUCTURAL, MECHANICAL AND ELECTRICAL DRAWINGS. NOTIFY ARCHITECT OF ANY DISCREPANCIES AND DO NOT PROCEED WITH AFFECTED WORK UNTIL THEY ARE RESOLVED.



170 Columbus Ave., Suite 240
San Francisco, CA 94133
Tel: (415) 894-2070
Fax: (415) 894-2011
www.cdengineers.com



ARCHITECT:
C&D ENGINEERS, INC.
460 Bush Street
San Francisco, CA 94108
415.773.0773 F. 415.773.1773

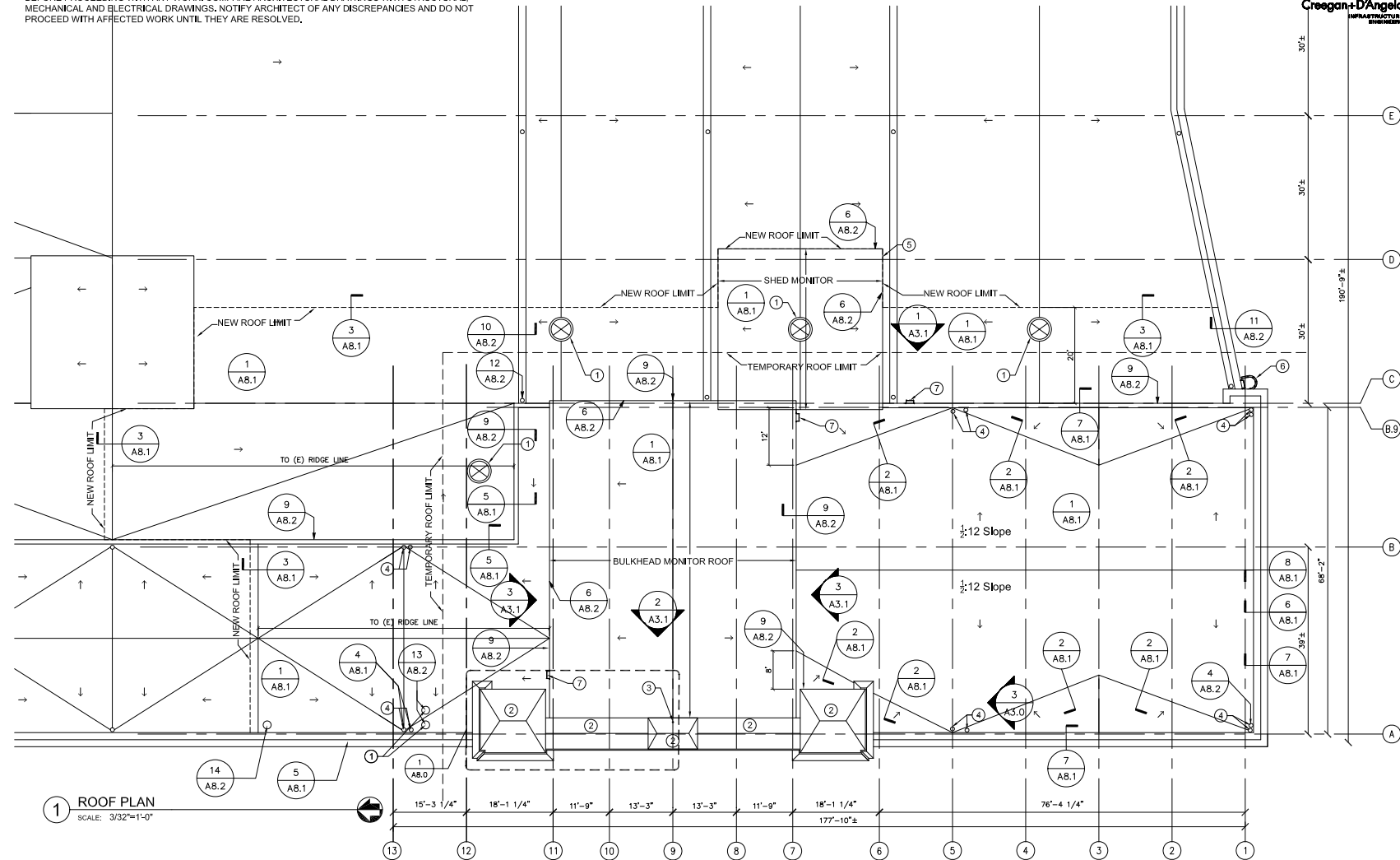


GENERAL NOTES

1. SEE SHEETS A8.0, A8.1, A8.2 FOR ROOF DETAILS.
2. ROOFING SYSTEM WITH MBTECHNOLOGY (MBT) SBS MODIFIED BITUMEN HOT ASPHALT APPLIED ROOFING ASSEMBLY: TWO PLIES OF MBT LAY FLAT SBS OVER 1/4 INCH THICK, MECHANICALLY FASTENED DENSDECK AND ONE LAYER OF MBT FIREGUARD SBS CAP SHEET WITH TAPERED POLYISOCYANURATE INSULATION BOARD CRICKETS. COLOR OF SURFACING SHEETS WILL BE TAN.

KEY NOTES

- ① NEW VENT TO REPLACE EXISTING - SEE A8.8, A8.2
- ② FLAT SEAM GALVANIZED STEEL ROOF
- ③ NEW WOOD FLAG POLE, PAINTED
- ④ NEW ROOF DRAIN. SEE PLUMBING AND MECHANICAL SERIES SHEETS-SEE DETAIL 4 OF A8.1
- ⑤ REPLACE BROKEN GLASS IN SHED MONITOR
- ⑥ REPLACE EXISTING LADDER-SEE SHEET 9.9
- ⑦ NEW LADDER-SEE SHEET 9.7



1 ROOF PLAN
SCALE: 3/32"=1'-0"

NO.	DATE	DESCRIPTION	BY	APP.
0	10/9/12	PERMIT SUBMITTAL	SN	NG
TABLE OF REVISIONS				
CHECK WITH TRACING TO SEE IF YOU HAVE LATEST REVISION				

REFERENCE INFORMATION
& FILE NO. OF SURVEYS



SAN FRANCISCO PORT COMMISSION
PORT OF SAN FRANCISCO
DEPARTMENT OF ENGINEERING

DESIGNED: DATE: 10/9/12
DRAWN: DATE: 10/9/12
CHECKED: DATE: 10/9/12
CD, SN

APPROVED BY: SAN FRANCISCO PORT COMMISSION
DATE: _____
CHIEF HARBOR ENGINEER

SCALE:
SHEET OF SHEETS

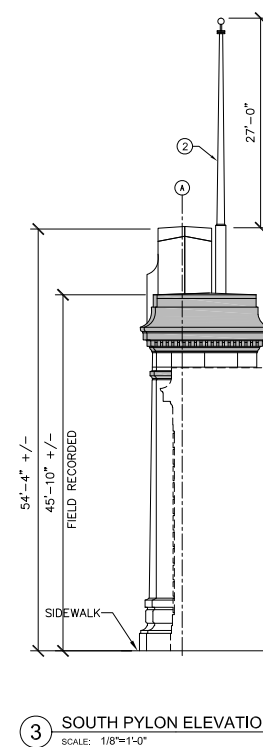
PIER 29
FIRE DAMAGE AND EMERGENCY REPAIRS
FIRE DAMAGE REHABILITATION
ROOF PLAN

CONTRACT NO.
DRAWING NO. A2.2
FILE NO.
REV. NO.

2. THE CONTRACTOR SHALL VERIFY ALL EXISTING CONDITIONS AND PROPOSE DIMENSIONS AT THE JOB SITE BEFORE PROCEEDING WITH ANY WORK. COMPARE ARCHITECTURAL DRAWINGS WITH STRUCTURAL, MECHANICAL AND ELECTRICAL DRAWINGS. NOTIFY ARCHITECT OF ANY DISCREPANCIES AND DO NOT PROCEED WITH AFFECTED WORK UNTIL THEY ARE RESOLVED.



CAREY & CO.
A HUGHES COMPANY



CONTRACT NO.
DRAWING NO. A3.0
FILE NO.
REV. NO.

NOTES

- DIMENSIONS SHOWN ARE BASED ON AS-BUILT DRAWINGS PROVIDED BY THE PORT OF SAN FRANCISCO.
- THE CONTRACTOR SHALL VERIFY ALL EXISTING CONDITIONS AND PROPOSE DIMENSIONS AT THE JOB SITE BEFORE PROCEEDING WITH ANY WORK. COMPARE ARCHITECTURAL DRAWINGS WITH STRUCTURAL, MECHANICAL AND ELECTRICAL DRAWINGS. NOTIFY ARCHITECT OF ANY DISCREPANCIES AND DO NOT PROCEED WITH AFFECTED WORK UNTIL THEY ARE RESOLVED.

Creagan+D'Angelo
INFRASTRUCTURE
ENGINEERS

170 Columbus Ave., Suite 240
San Francisco, CA 94133
Tel: (415) 894-2010
Fax: (415) 894-2011
www.cdengineers.com



ARCHITECT:

C&L Engine Co. No. 2
460 Bush Street
San Francisco, CA 94108
415.773.0773 F: 415.773.1773

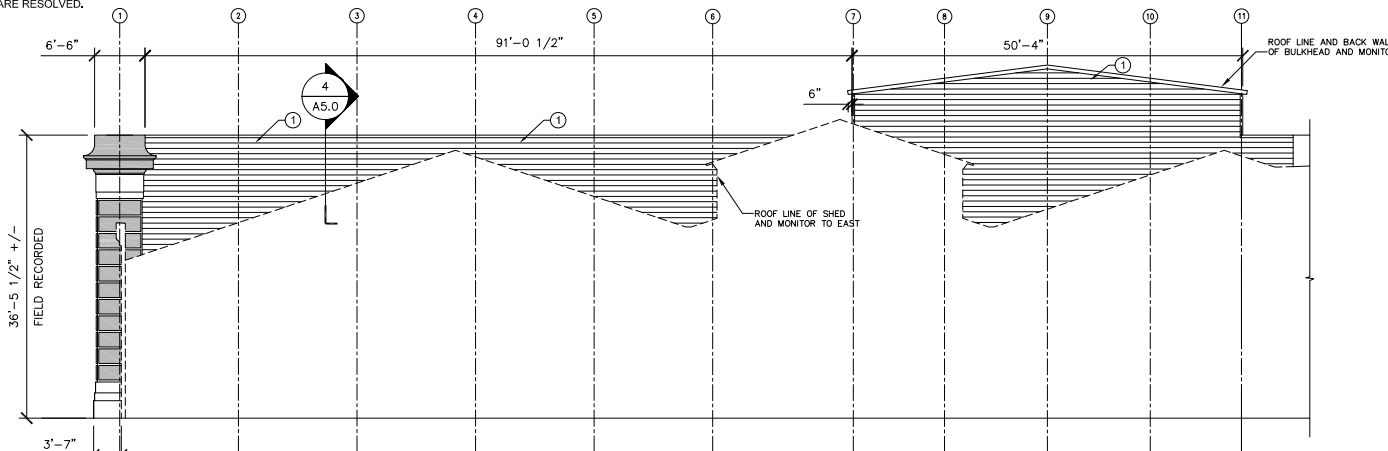


KEY NOTES

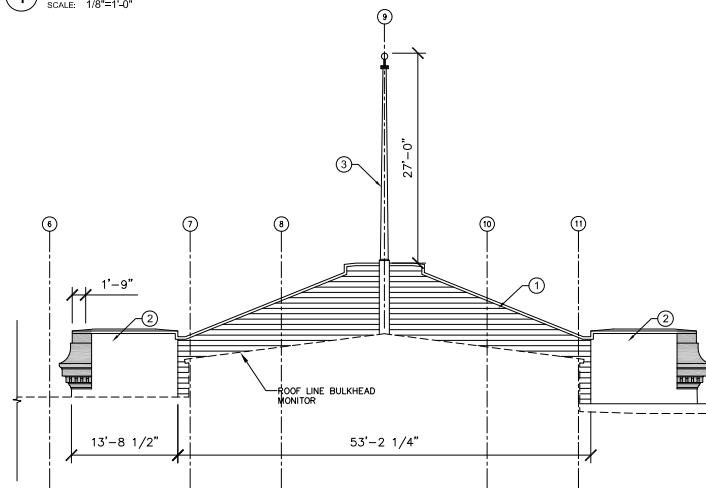
- 8" "V-RUSTIC" T&G SIDING AND TRIM, PAINTED.
- THREE COAT CEMENT PLASTER
- NEW WOOD FLAG POLE, PAINTED.

LEGEND

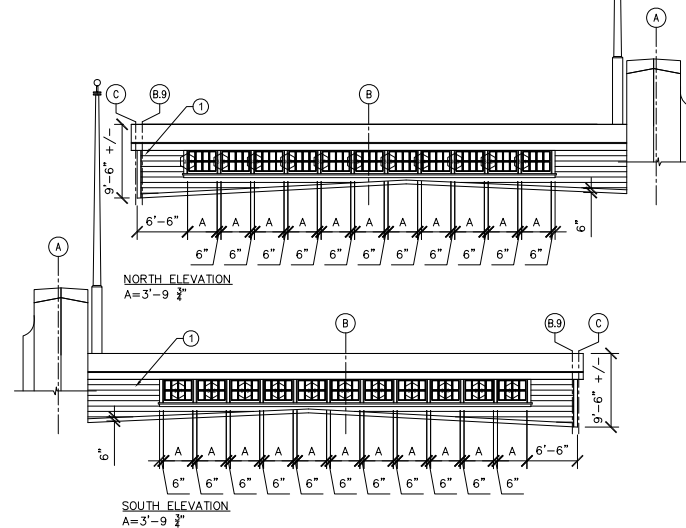
EIFS



1 EAST ELEVATION
SCALE: 1/8"=1'-0"



2 BACK OF ARCH AND PYLONS - EAST ELEVATION
SCALE: 1/8"=1'-0"



3 MONITOR
SCALE: 1/8"=1'-0"

NO.	DATE	DESCRIPTION	BY	APP.
0	10/9/12	PERMIT SUBMITTAL	SN	NG
TABLE OF REVISIONS				
CHECK WITH TRACING TO SEE IF YOU HAVE LATEST REVISION				

REFERENCE INFORMATION
& FILE NO. OF SURVEYS



SAN FRANCISCO PORT COMMISSION
PORT OF SAN FRANCISCO
DEPARTMENT OF ENGINEERING

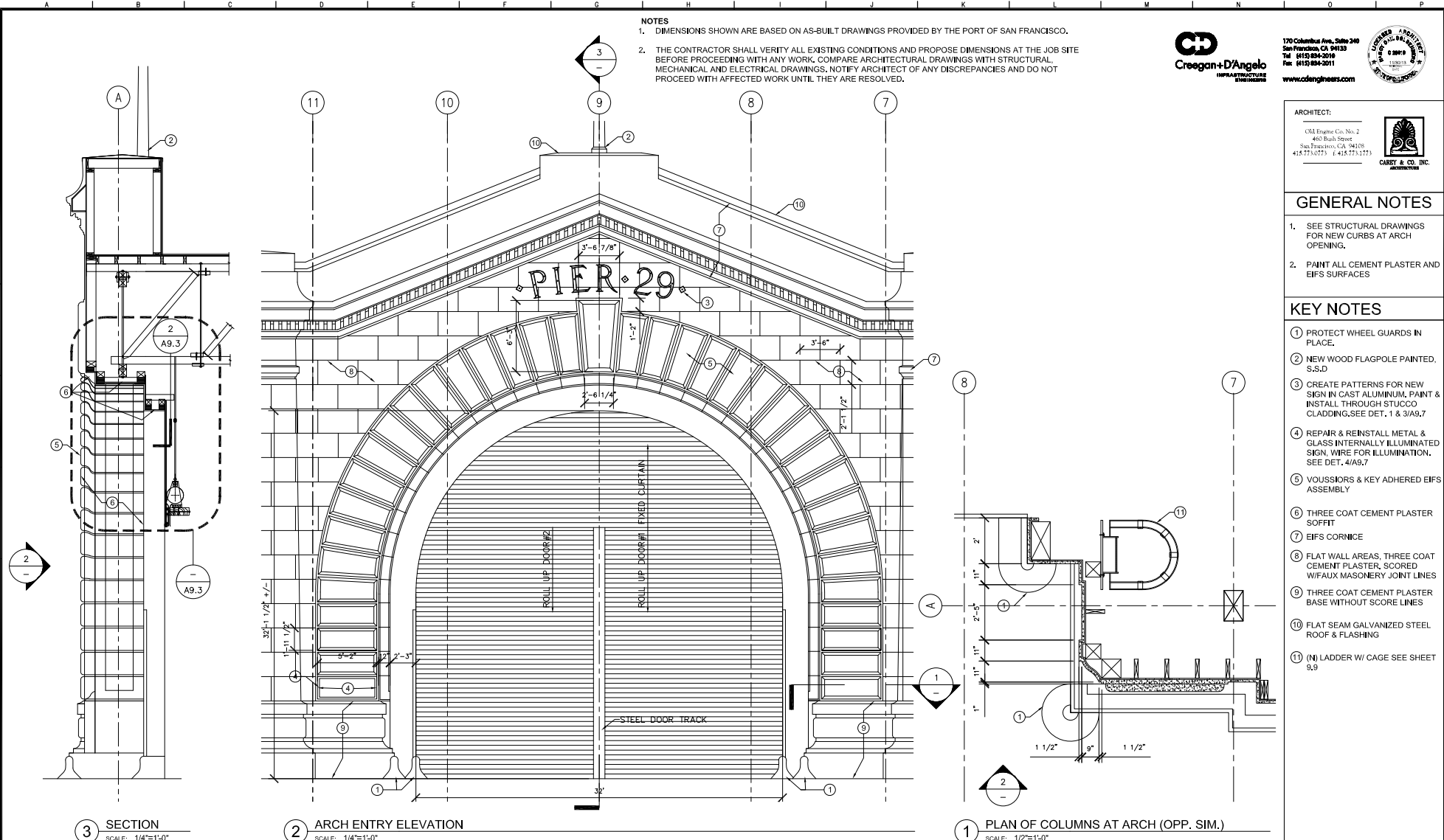
DESIGNED: DATE: 10/9/12
DRAWN: DATE: 10/9/12
CHECKED: DATE: 10/9/12
CD, SN

APPROVED BY: SAN FRANCISCO PORT COMMISSION
DATE: _____
CHIEF HARBOR ENGINEER

SCALE: _____
SHEET OF SHEETS: _____

PIER 29
FIRE DAMAGE AND EMERGENCY REPAIRS
FIRE DAMAGE REHABILITATION ELEVATIONS

CONTRACT NO. _____
DRAWING NO. **A3.1**
FILE NO. _____
REV. NO. _____



NO.	DATE	DESCRIPTION	BY	APP.
0	10/9/12	PERMIT SUBMITTAL	SN	NO
TABLE OF REVISIONS				
CHECK WITH TRACING TO SEE IF YOU HAVE LATEST REVISION				

REFERENCE INFORMATION & FILE NO. OF SURVEYS



SAN FRANCISCO PORT COMMISSION
PORT OF SAN FRANCISCO
 DEPARTMENT OF ENGINEERING

DESIGNED: DATE: 10/9/12	APPROVED BY: SAN FRANCISCO PORT COMMISSION
DRAWN: DATE: SN, EG, JC 10/9/12	DATE: _____
CHECKED: DATE: CD, SN 10/9/12	CHIEF HARBOR ENGINEER

SCALE: _____
SHEET OF SHEETS: _____

PIER 29
FIRE DAMAGE AND EMERGENCY REPAIRS
FIRE DAMAGE REHABILITATION
MAIN DOORWAY RECONSTRUCTION

CONTRACT NO. _____
DRAWING NO. A3.2
FILE NO. _____
REV. NO. _____

- NOTES**
- DIMENSIONS SHOWN ARE BASED ON AS-BUILT DRAWINGS PROVIDED BY THE PORT OF SAN FRANCISCO.
 - THE CONTRACTOR SHALL VERIFY ALL EXISTING CONDITIONS AND PROPOSE DIMENSIONS AT THE JOB SITE BEFORE PROCEEDING WITH ANY WORK. COMPARE ARCHITECTURAL DRAWINGS WITH STRUCTURAL, MECHANICAL AND ELECTRICAL DRAWINGS. NOTIFY ARCHITECT OF ANY DISCREPANCIES AND DO NOT PROCEED WITH AFFECTED WORK UNTIL THEY ARE RESOLVED.

Creagan+D'Angelo
 1800 ARCHITECTURE ENGINEERS

170 Columbus Ave., Suite 240
 San Francisco, CA 94133
 Tel: (415) 894-2018
 Fax: (415) 894-2011
 www.cdengineers.com



ARCHITECT:
 CML Engine Co. No. 2
 4610 Bush Street
 San Francisco, CA 94118
 415.773.0773 F: 415.773.1773



GENERAL NOTES

- SEE STRUCTURAL DRAWINGS FOR NEW CURBS AT ARCH OPENING.
- PAINT ALL CEMENT PLASTER AND EIFS SURFACES

KEY NOTES

- PROTECT WHEEL GUARDS IN PLACE.
- NEW WOOD FLAGPOLE PAINTED, S.S.D
- CREATE PATTERNS FOR NEW SIGN IN CAST ALUMINUM, PAINT & INSTALL THROUGH STUCCO CLADDING, SEE DET. 1 & 3/A9.7
- REPAIR & REINSTALL METAL & GLASS INTERNALLY ILLUMINATED SIGN, WIRE FOR ILLUMINATION. SEE DET. 4/A9.7
- VOUSSOIRS & KEY ADHERED EIFS ASSEMBLY
- THREE COAT CEMENT PLASTER SOFFIT
- EIFS CORNICE
- FLAT WALL AREAS, THREE COAT CEMENT PLASTER, SCORED W/FAUX MASONRY JOINT LINES
- THREE COAT CEMENT PLASTER BASE WITHOUT SCORE LINES
- FLAT SEAM GALVANIZED STEEL ROOF & FLASHING
- (N) LADDER W/ CAGE SEE SHEET 9.9

NOTES

- DIMENSIONS SHOWN ARE BASED ON AS-BUILT DRAWINGS PROVIDED BY THE PORT OF SAN FRANCISCO.
- THE CONTRACTOR SHALL VERIFY ALL EXISTING CONDITIONS AND PROPOSE DIMENSIONS AT THE JOB SITE BEFORE PROCEEDING WITH ANY WORK. COMPARE ARCHITECTURAL DRAWINGS WITH STRUCTURAL, MECHANICAL AND ELECTRICAL DRAWINGS, NOTIFY ARCHITECT OF ANY DISCREPANCIES AND DO NOT PROCEED WITH AFFECTED WORK UNTIL THEY ARE RESOLVED.



170 Columbus Ave., Suite 240
San Francisco, CA 94133
Tel: (415) 894-2010
Fax: (415) 894-2011
www.cdengineers.com



ARCHITECT:

C&L Engine Co. No. 2
460 Bush Street
San Francisco, CA 94108
415.773.1773 F 415.773.1773

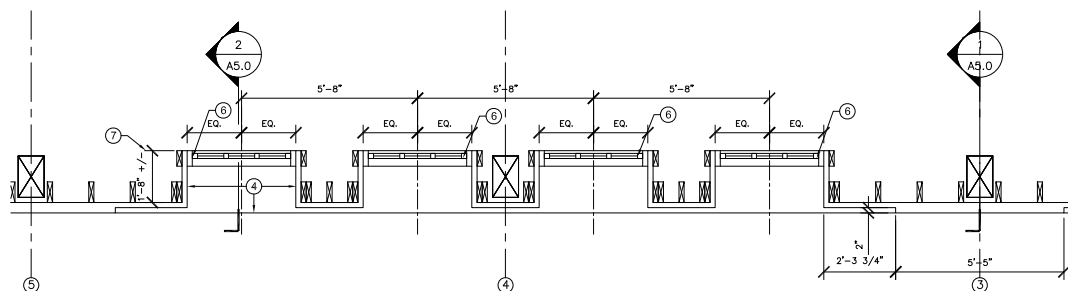


GENERAL NOTES

- ALL WINDOWS HAVE BEEN CATALOGED AND SALVAGED FOR REINSTALLATION, SEE SHEETS A7.0 AND A7.1 FOR WINDOW SCHEDULE.
- WALL FRAMING TO REMAIN TO BE DETERMINED BY STRUCTURAL ENGINEER.
- SEE STRUCTURAL DRAWINGS FOR HEAVY TIMBER REPLACEMENT.
- SHEATH FRAMED WALL IN PLYWOOD PER STRUCTURAL DRAWINGS.
- WALL CLADDING FROM BASE TO BOTTOM OF CORNICE IS TRADITIONAL 3 COAT CEMENT PLASTER, CORNICE, QUOINS AND VOUSSOIRS ARE EXTERIOR INSULATION FOAM SYSTEM (EIFS).
- PAINT ALL CEMENT PLASTER AND EIFS SURFACES.

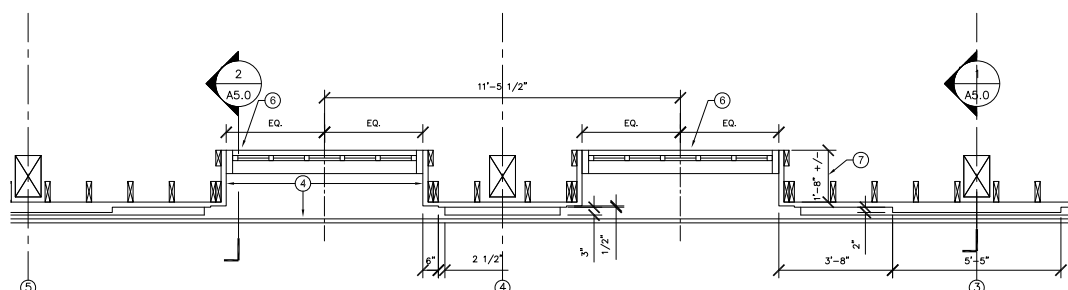
KEY NOTES

- EIFS CORNICE
- FLAT WALL AREAS THREE COAT PLASTER SCORED WITH FAUX MASONRY JOINT LINES
- THREE COAT CEMENT PLASTER BASE WITHOUT SCORE LINES
- THREE COAT CEMENT PLASTER SOFFIT, JAMBS AND SILL
- EIFS QUOINS
- RESTORED WOOD WINDOWS
- FACE OF STUD OF BACK OF WINDOW UNIT JAMB DIMENSION BASED ON EXISTING CONDITIONS



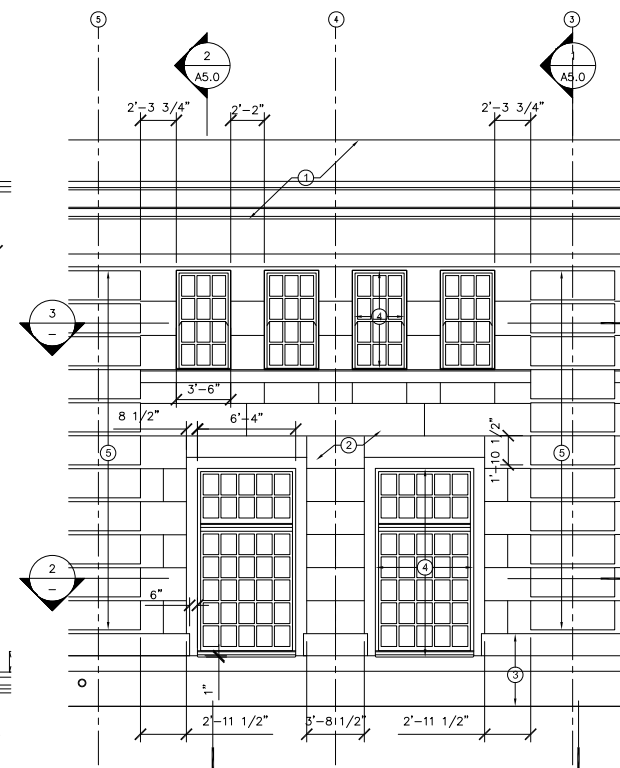
3 PARTIAL FLOOR PLAN - UPPER WINDOWS

SCALE: 1/2"=1'-0"



2 PARTIAL FLOOR PLAN - LOWER WINDOWS

SCALE: 1/2"=1'-0"



1 WEST WINDOW WALL PARTIAL ELEVATION

SCALE: 1/4"=1'-0"

NO.	DATE	DESCRIPTION	BY	APP.
0	10/9/12	PERMIT SUBMITTAL	SN	NG
TABLE OF REVISIONS				
CHECK WITH TRACING TO SEE IF YOU HAVE LATEST REVISION				

REFERENCE INFORMATION
& FILE NO. OF SURVEYS



SAN FRANCISCO PORT COMMISSION
PORT OF SAN FRANCISCO
DEPARTMENT OF ENGINEERING

DESIGNED: DATE: 10/9/12
DRAWN: DATE: 10/9/12
CHECKED: DATE: 10/9/12
CD, SN

APPROVED BY: SAN FRANCISCO PORT COMMISSION
DATE: _____
CHIEF HARBOR ENGINEER

SCALE:
SHEET OF SHEETS

PIER 29
FIRE DAMAGE AND EMERGENCY REPAIRS
FIRE DAMAGE REHABILITATION
WINDOW WALL RECONSTRUCTION

CONTRACT NO.
DRAWING NO. A3.4
FILE NO.
REV. NO.

NOTES

- DIMENSIONS SHOWN ARE BASED ON AS-BUILT DRAWINGS PROVIDED BY THE PORT OF SAN FRANCISCO.
- THE CONTRACTOR SHALL VERIFY ALL EXISTING CONDITIONS AND PROPOSE DIMENSIONS AT THE JOB SITE BEFORE PROCEEDING WITH ANY WORK. COMPARE ARCHITECTURAL DRAWINGS WITH STRUCTURAL, MECHANICAL AND ELECTRICAL DRAWINGS, NOTIFY ARCHITECT OF ANY DISCREPANCIES AND DO NOT PROCEED WITH AFFECTED WORK UNTIL THEY ARE RESOLVED.

CH
Creagan+D'Angelo
ARCHITECTURE
INTERIORS

170 Columbus Ave., Suite 240
San Francisco, CA 94133
Tel: (415) 894-2010
Fax: (415) 894-2011
www.cdengineers.com



ARCHITECT:

C&D Engine Co. No. 2
460 Bush Street
San Francisco, CA 94108
415.773.0773 F 415.773.1773

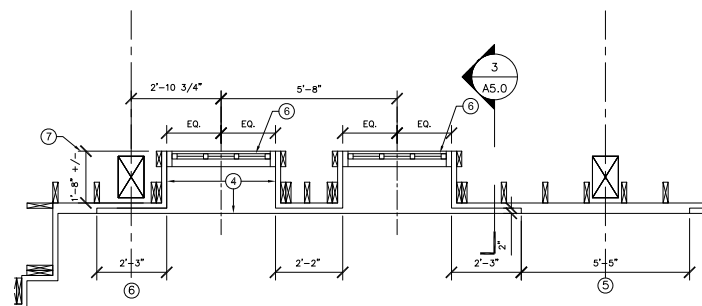


GENERAL NOTES

- ALL WINDOWS HAVE BEEN CATALOGED AND SALVAGED FOR REINSTALLATION. SEE SHEETS A7.0 AND A7.1 FOR WINDOW SCHEDULE.
- WALL FRAMING TO REMAIN TO BE DETERMINED BY STRUCTURAL ENGINEER.
- SEE STRUCTURAL DRAWINGS FOR HEAVY TIMBER REPLACEMENT.
- SHEATH FRAMED WALL IN PLYWOOD PER STRUCTURAL DRAWINGS.
- WALL CLADDING FROM BASE TO BOTTOM OF CORNICE IS TRADITIONAL 3 COAT CEMENT PLASTER, CORNICE, QUOINS AND VOUSOIRS ARE EXTERIOR INSULATION FOAM SYSTEM (EIFS).
- PAINT ALL CEMENT PLASTER AND EIFS SURFACES.

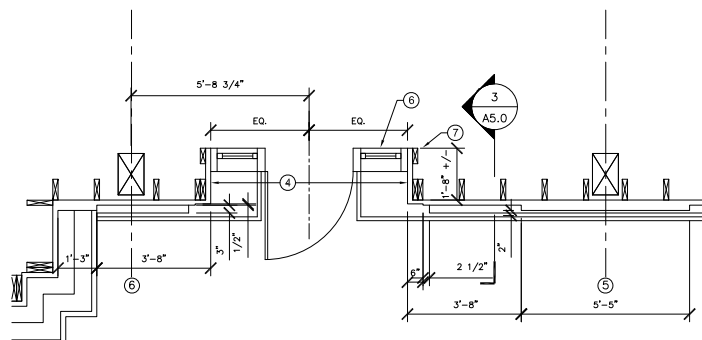
KEY NOTES

- EIFS CORNICE
- FLAT WALL AREAS THREE COAT PLASTER SCORED WITH FAUX MASONRY JOINT LINES
- THREE COAT CEMENT PLASTER BASE WITHOUT SCORE LINES
- THREE COAT CEMENT PLASTER SOFFIT, JAMBS AND SILL
- EIFS QUOINS
- RESTORED WOOD WINDOWS
- FACE OF STUD OF BACK OF WINDOW UNIT JAMB DIMENSION BASED ON EXISTING CONDITIONS
- (N) WALL MOUNTED LIGHT
- (N) DOOR OPERATOR PUSH PAD
- (N) ROOF DRAIN OVERFLOW SEE DET. 6/9,8



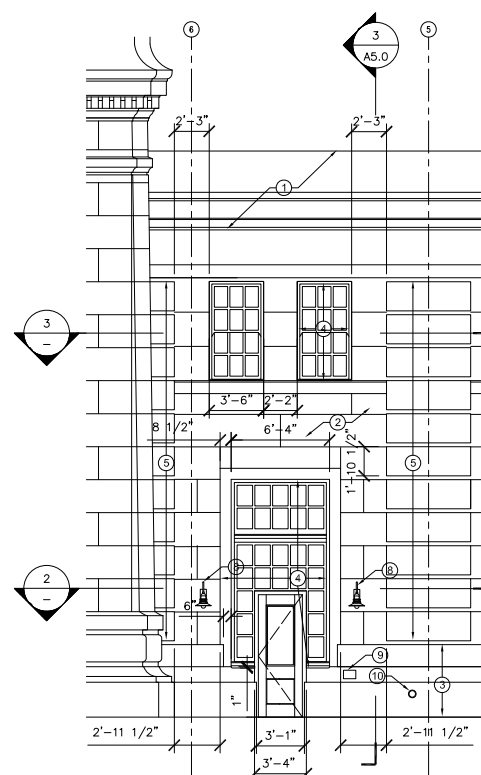
3 PARTIAL FLOOR PLAN - UPPER WINDOWS

SCALE: 1/2"=1'-0"



2 PARTIAL FLOOR PLAN - LOWER WINDOWS

SCALE: 1/2"=1'-0"



1 WEST WINDOW WALL PARTIAL ELEVATION

SCALE: 1/4"=1'-0"

NO.	DATE	DESCRIPTION	BY	APP.
0	10/9/12	PERMIT SUBMITTAL	SN	NG
TABLE OF REVISIONS				
CHECK WITH TRACING TO SEE IF YOU HAVE LATEST REVISION				

REFERENCE INFORMATION
& FILE NO. OF SURVEYS



SAN FRANCISCO PORT COMMISSION
PORT OF SAN FRANCISCO
DEPARTMENT OF ENGINEERING

DESIGNED: DATE: 10/9/12
DRAWN: DATE: 10/9/12
CHECKED: DATE: 10/9/12
CD, SN

APPROVED BY
SAN FRANCISCO PORT COMMISSION
DATE: _____
CHIEF HARBOR ENGINEER

SHEET OF SHEETS
-

PIER 29
FIRE DAMAGE AND EMERGENCY REPAIRS
FIRE DAMAGE REHABILITATION
WINDOW WALL RECONSTRUCTION

CONTRACT NO.
DRAWING NO. A3.5
FILE NO.
REV. NO.

NOTES

- DIMENSIONS SHOWN ARE BASED ON AS-BUILT DRAWINGS PROVIDED BY THE PORT OF SAN FRANCISCO.
- THE CONTRACTOR SHALL VERIFY ALL EXISTING CONDITIONS AND PROPOSE DIMENSIONS AT THE JOB SITE BEFORE PROCEEDING WITH ANY WORK. COMPARE ARCHITECTURAL DRAWINGS WITH STRUCTURAL, MECHANICAL AND ELECTRICAL DRAWINGS. NOTIFY ARCHITECT OF ANY DISCREPANCIES AND DO NOT PROCEED WITH AFFECTED WORK UNTIL THEY ARE RESOLVED.



170 Columbus Ave., Suite 240
San Francisco, CA 94133
Tel: (415) 894-2010
Fax: (415) 894-2011
www.cdengineers.com



ARCHITECT:

CML Engine Co. No. 2
460 Bush Street
San Francisco, CA 94108
415.773.0773 F 415.773.1773

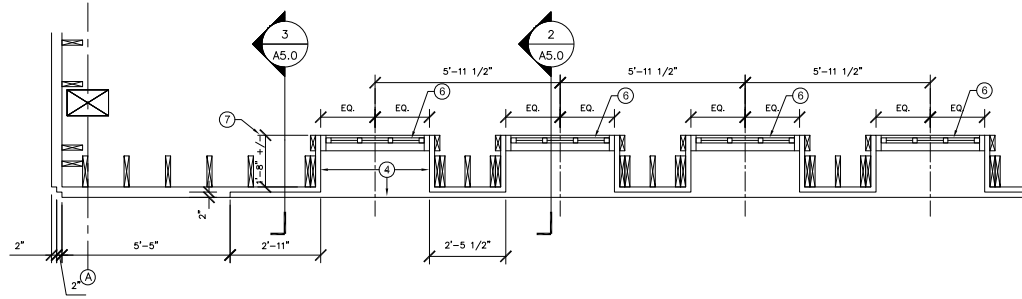


GENERAL NOTES

- ALL WINDOWS HAVE BEEN CATALOGED AND SALVAGED FOR REINSTALLATION, SEE SHEETS A7.0 AND A7.1 FOR WINDOW SCHEDULE.
- WALL FRAMING TO REMAIN TO BE DETERMINED BY STRUCTURAL ENGINEER.
- SEE STRUCTURAL DRAWINGS FOR HEAVY TIMBER REPLACEMENT.
- SHEATH FRAMED WALL IN PLYWOOD PER STRUCTURAL DRAWINGS.
- WALL CLADDING FROM BASE TO BOTTOM OF CORNICE IS TRADITIONAL 3 COAT CEMENT PLASTER, CORNICE, QUOINS AND VOUSOIRS ARE EXTERIOR INSULATION FOAM SYSTEM (EIFS).
- PAINT ALL CEMENT PLASTER AND EIFS SURFACES.

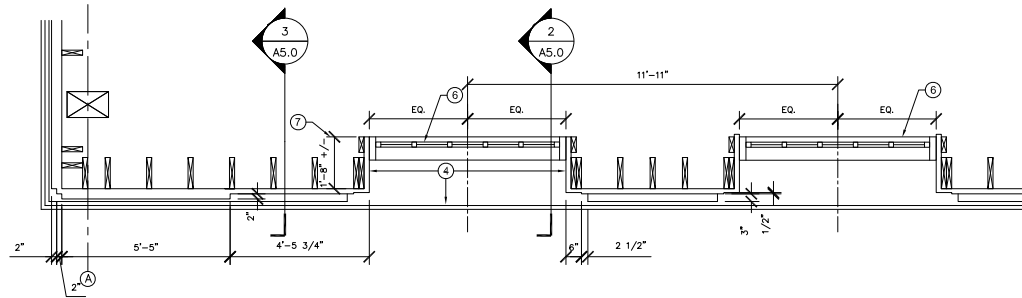
KEY NOTES

- EIFS CORNICE
- FLAT WALL AREAS THREE COAT PLASTER SCORED WITH FAUX MASONRY JOINT LINES
- THREE COAT CEMENT PLASTER BASE WITHOUT SCORE LINES
- THREE COAT CEMENT PLASTER SOFFIT, JAMBS AND SILL
- EIFS QUOINS
- RESTORED WOOD WINDOWS
- FACE OF STUD OF BACK OF WINDOW UNIT JAMB DIMENSION BASED ON EXISTING CONDITIONS
- (N) ROOF DRAIN OVERFLOW SEE DET. 6/9,8



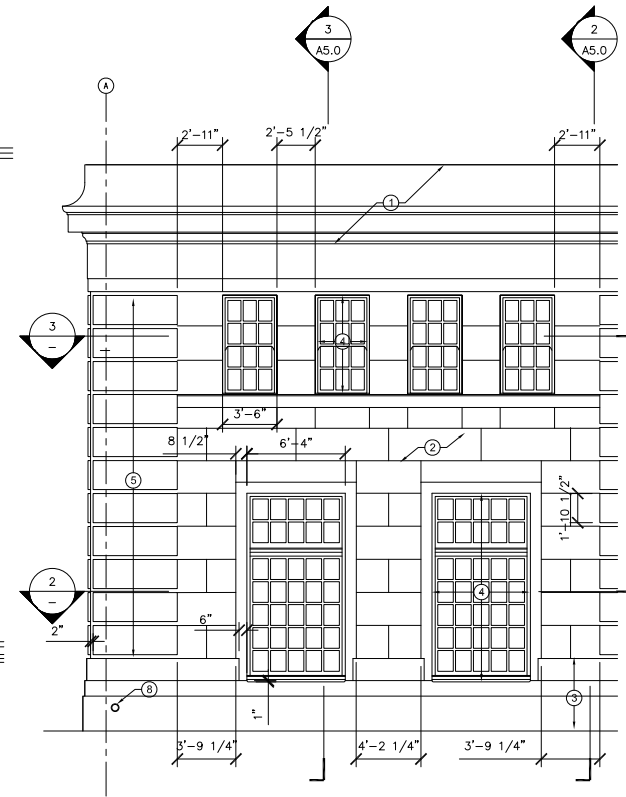
3 PARTIAL FLOOR PLAN - UPPER WINDOWS

SCALE: 1/2"=1'-0"



2 PARTIAL FLOOR PLAN - LOWER WINDOWS

SCALE: 1/2"=1'-0"



1 SOUTH WINDOW WALL PARTIAL ELEVATION

SCALE: 1/4"=1'-0"

NO.	DATE	DESCRIPTION	BY	APP.
0	10/9/12	PERMIT SUBMITTAL	SN	NG
TABLE OF REVISIONS				
CHECK WITH TRACING TO SEE IF YOU HAVE LATEST REVISION				

REFERENCE INFORMATION
& FILE NO. OF SURVEYS



SAN FRANCISCO PORT COMMISSION
PORT OF SAN FRANCISCO
DEPARTMENT OF ENGINEERING

DESIGNED: DATE: 10/9/12
DRAWN: DATE: 10/9/12
CHECKED: DATE: 10/9/12
CD, SN

APPROVED BY: SAN FRANCISCO PORT COMMISSION
DATE: _____
CHIEF HARBOR ENGINEER

SCALE: _____
SHEET OF SHEETS: _____

PIER 29
FIRE DAMAGE AND EMERGENCY REPAIRS
FIRE DAMAGE REHABILITATION
WINDOW WALL RECONSTRUCTION

CONTRACT NO. _____
DRAWING NO. A3.6
FILE NO. _____
REV. NO. _____

NOTES

1. DIMENSIONS SHOWN ARE BASED ON AS-BUILT DRAWINGS PROVIDED BY THE PORT OF SAN FRANCISCO.
2. THE CONTRACTOR SHALL VERIFY ALL EXISTING CONDITIONS AND PROPOSE DIMENSIONS AT THE JOB SITE BEFORE PROCEEDING WITH ANY WORK. COMPARE ARCHITECTURAL DRAWINGS WITH STRUCTURAL, MECHANICAL AND ELECTRICAL DRAWINGS, NOTIFY ARCHITECT OF ANY DISCREPANCIES AND DO NOT PROCEED WITH AFFECTED WORK UNTIL THEY ARE RESOLVED.

Creagan+D'Angelo
INFRASTRUCTURE ENGINEERS

170 Columbus Ave., Suite 240
San Francisco, CA 94133
Tel: (415) 894-2010
Fax: (415) 894-2011
www.cdengineers.com



ARCHITECT:

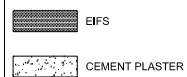
Old Engine Co. No. 2
460 Bush Street
San Francisco, CA 94108
415.773.0773 F. 415.773.1773



GENERAL NOTES

1. VERIFY ALL DIMENSIONS IN FIELD USING SURVIVING (E) CONDITIONS, SALVAGED MATERIALS AND SIMILAR CONDITIONS AT PIER 31.

LEGEND



4 SECTION @ BULKHEAD AND SHED
SCALE: 1/2"=1'-0"

3 SECTION @ TYP. WALL
SCALE: 1/2"=1'-0"

2 SECTION @ WINDOWS
SCALE: 1/2"=1'-0"

1 SECTION @ QUOINS
SCALE: 1/2"=1'-0"

NO.	DATE	DESCRIPTION	BY	APP.
0	10/9/12	PERMIT SUBMITTAL	SN	NG
TABLE OF REVISIONS				
CHECK WITH TRACING TO SEE IF YOU HAVE LATEST REVISION				

REFERENCE INFORMATION
& FILE NO. OF SURVEYS



SAN FRANCISCO PORT COMMISSION
PORT OF SAN FRANCISCO
DEPARTMENT OF ENGINEERING

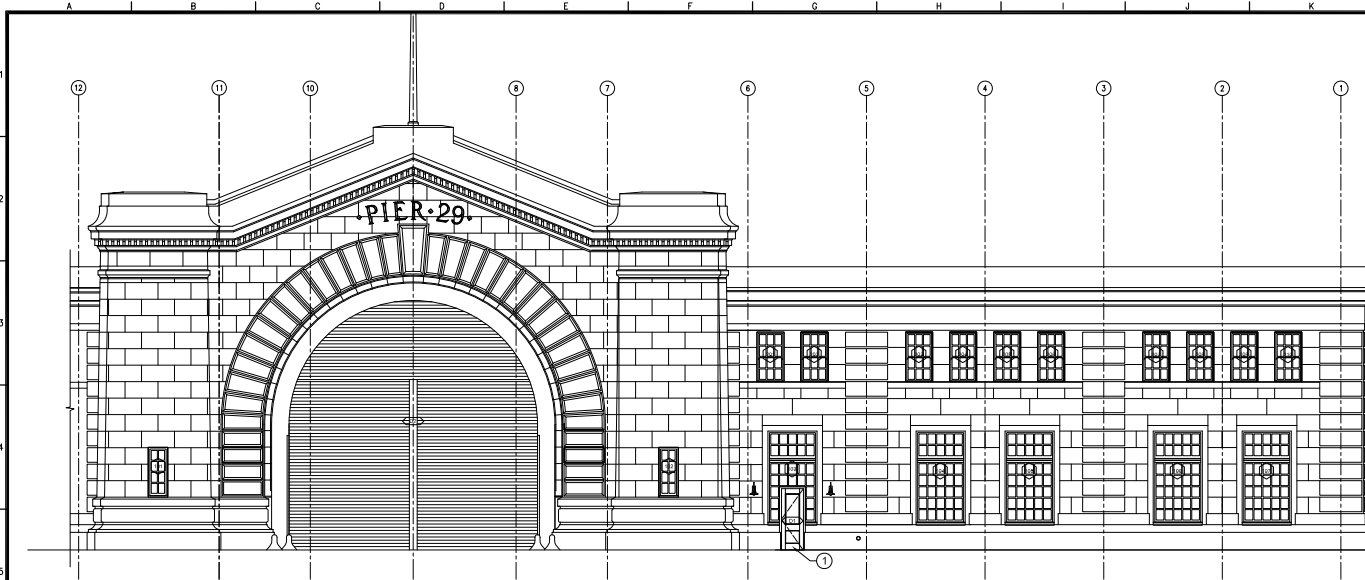
DESIGNED: DATE: 10/9/12
DRAWN: DATE: 10/9/12
CHECKED: DATE: 10/9/12
CD, SN

APPROVED BY: SAN FRANCISCO PORT COMMISSION
DATE: _____
CHIEF HARBOR ENGINEER

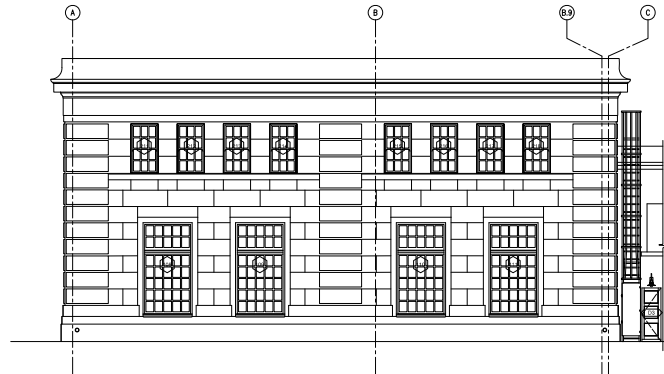
SCALE:
SHEET OF SHEETS

PIER 29
FIRE DAMAGE AND EMERGENCY REPAIRS
FIRE DAMAGE REHABILITATION
WALL SECTIONS

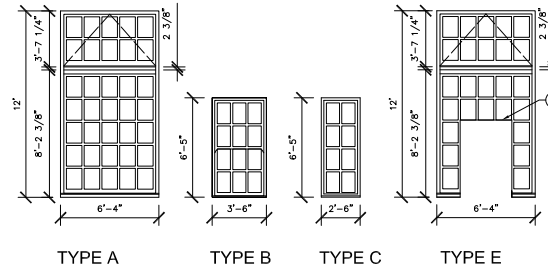
CONTRACT NO.
DRAWING NO. **A5.0**
FILE NO.
REV. NO.



1 WEST ELEVATION
SCALE: 1/8"=1'-0"



2 SOUTH ELEVATION
SCALE: 1/8"=1'-0"



FIRST FLOOR

WINDOW #	REPAIR CODES	TYPE	COMMENTS
101	3	C	NO WINDOW AT THIS LOCATION BEFORE THE FIRE; PLYWOOD INFILL
102	2	C	WINDOW SALVAGED
103	1, 2	E	UPPER PORTION REPAIR CODE 1, LOWER PORTION REPAIR CODE 2, INSTALL SAFETY AND SECURITY FILM AT SIDELITES
104	1	A	
105	1	A	
106	2	A	
107	1	A	
108	2, 3	A	UPPER PORTION REPAIR CODE 3, LOWER PORTION REPAIR CODE 2
109	2	A	
110	2	A	
111	3	A	

SECOND FLOOR

201	2	B	WINDOW SALVAGED #1W
202	2	B	WINDOW SALVAGED #2W
203	2	B	WINDOW SALVAGED #3W
204	2	B	WINDOW SALVAGED #4W
205	1	B	
206	1	B	
207	2	B	
208	2	B	
209	2	B	
210	2	B	
211	2	B	
212	3	B	
213	3	B	
214	3	B	
215	3	B	WINDOW SALVAGED #1S
216	3	B	WINDOW SALVAGED #2S
217	3	B	WINDOW SALVAGED #3S
218	3	B	WINDOW SALVAGED #4S

170 Columbus Ave., Suite 240
San Francisco, CA 94133
Tel: (415) 894-2010
Fax: (415) 894-2011
www.cdengineers.com

Creegan+D'Angelo
ARCHITECTS
STRUCTURAL ENGINEERS

ARCHITECT:
C&D Engine Co. No. 2
460 Bush Street
San Francisco, CA 94108
415.773.0773 F 415.773.1773



GENERAL NOTES

- REPLACE ALL BROKEN GLASS WITH NEW IN-KIND MATERIAL-SALVAGE SOUND HISTORIC GLASS.
- CATALOGUE, SALVAGE, AND PROTECT ALL WINDOWS IDENTIFIED FOR REPAIR AND REINSTALLATION. ALL REPAIR WORK BY CONTRACTOR LICENSED TO HANDLE LEAD INFUSED MATERIALS.
- SEE SHEETS A9.0 & A9.1 FOR WINDOW DETAILS.
- SEE SHEETS A9.2 & A9.3 FOR DOOR DETAILS.

REPAIR CODES

- SEE GENERAL NOTE 2 IN GENERAL NOTES. WINDOW UNITS ARE WHOLE WITH NO MISSING WOOD ELEMENTS. REMOVE GLAZING & GLAZING PUTTY AND BLISTERED OR DEBOUNDED PAINT. REPAIR LOOSE JOINTS. RESTORE TO OPERATING CONDITION. PRIME, REINSTALL & RE-GLAZE.
- SEE GENERAL NOTE 2 IN GENERAL NOTES. WINDOW UNITS CONTAIN MISSING OR FIRE DAMAGED WOOD ELEMENTS. REPLACE MISSING WOOD ELEMENTS WITH IN-KIND MATERIAL AND PROFILES. REMOVE GLAZING, GLAZING PUTTY AND BLISTERED OR DEBOUNDED PAINT. REPAIR LOOSE JOINTS IN EXISTING PORTION. RESTORE TO OPERATING CONDITION. PRIME, REINSTALL & RE-GLAZE. REFER TO WINDOW SURVEY.
- WINDOW UNIT MISSING. RECONSTRUCT WITH IN-KIND MATERIAL AND PROFILE BASED ON DESIGN OF EXISTING. IN-TACT UNITS AND/OR THESE DRAWINGS. PRIME, INSTALL & GLAZE.

KEY NOTES

- INSTALL ELECTRO-MECHANICAL DOOR OPERATOR TO DOOR HEAD.

NO.	DATE	DESCRIPTION	BY	APP.
0	10/9/12	PERMIT SUBMITTAL	SN	NG
TABLE OF REVISIONS				
CHECK WITH TRACING TO SEE IF YOU HAVE LATEST REVISION				

REFERENCE INFORMATION
& FILE NO. OF SURVEYS



SAN FRANCISCO PORT COMMISSION
PORT OF SAN FRANCISCO
DEPARTMENT OF ENGINEERING

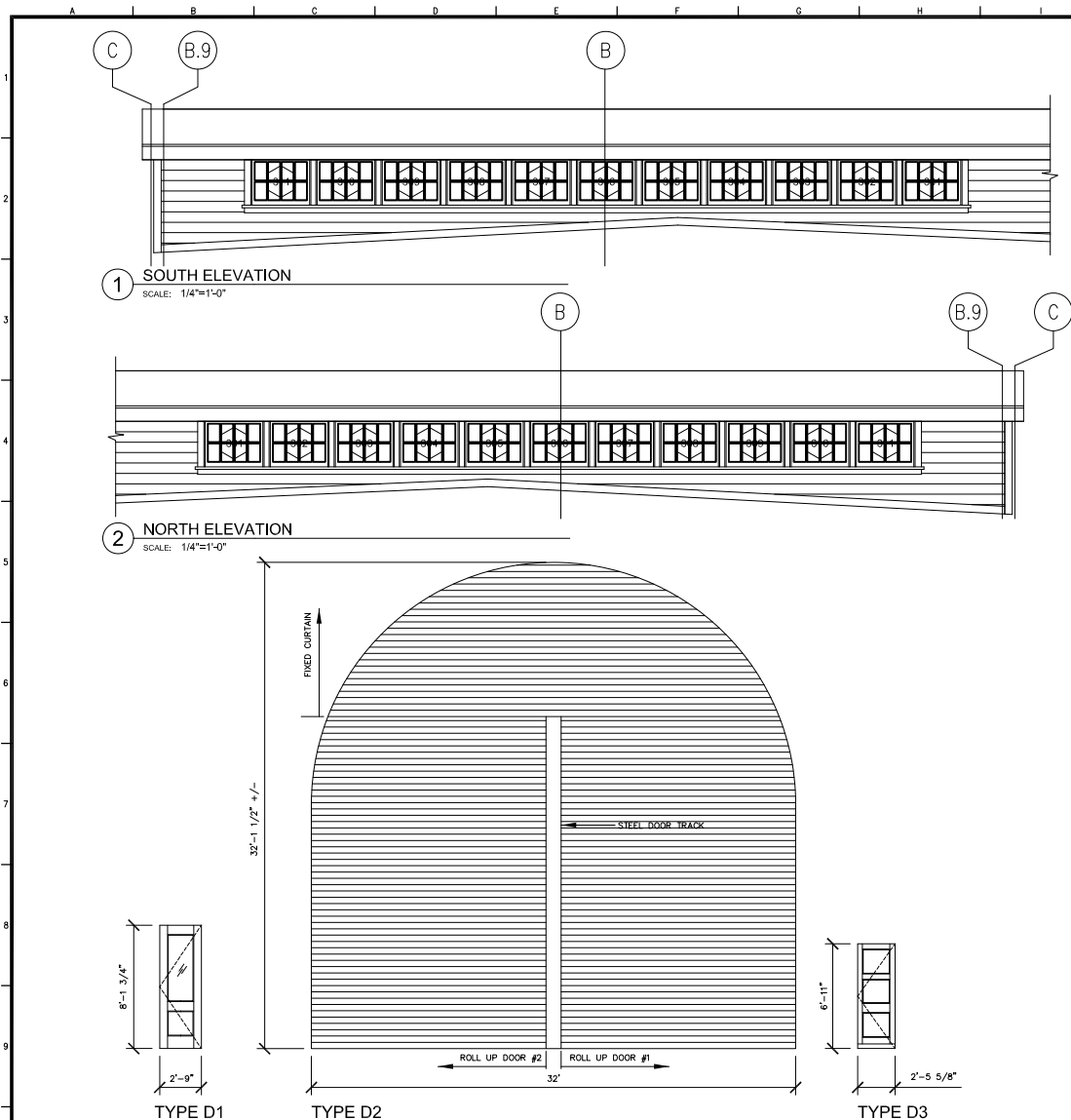
DESIGNED: DATE:
- 10/9/12
DRAWN: DATE:
SN, EG, JC 10/9/12
CHECKED: DATE:
CD, SN 10/9/12

APPROVED BY
SAN FRANCISCO PORT COMMISSION
DATE: _____
CHIEF HARBOR ENGINEER

SCALE:
SHEET OF SHEETS
-

PIER 29
FIRE DAMAGE AND EMERGENCY REPAIRS
FIRE DAMAGE REHABILITATION
WINDOW SURVEY SCHEDULE #1

CONTRACT NO.
DRAWING NO.
A7.0
FILE NO.
REV. NO.



170 Columbus Ave., Suite 240
San Francisco, CA 94133
Tel: (415) 894-2010
Fax: (415) 894-2011
www.cdeengineers.com



MONITOR

WINDOW #	REPAIR CODES	TYPE	COMMENTS
301	3	D	
302	3	D	
303	3	D	
304	3	D	
305	3	D	
306	3	D	
307	3	D	
308	3	D	
309	3	D	
310	3	D	
311	3	D	
312	3	D	
313	3	D	
314	3	D	
315	3	D	
316	3	D	
317	3	D	
318	3	D	
319	3	D	
320	3	D	
321	3	D	
322	3	D	

DOOR SCHEDULE

DOOR #/ TYPE	REPAIR CODES	COMMENTS
D1	4	NEW FRAME, TEMPERED SAFETY GLASS IN UPPER PANEL, STILE AND RAIL WOOD DOOR WITH METAL CLAD EXTERIOR, AND INSTALL ELECTRO-MECHANICAL DOOR OPERATOR TO DOOR HEAD.
D2		NEW ROLL UP DOORS (2) - 16 GAUGE #4, 3" CURVED SLATS TO MATCH EXISTING - 1 1/2 HP LIFTMASTER MOTOR OPERATOR (VOLTAGE AND PHASE TO MATCH EXISTING) WITH REVERSING SAFETY EDGE AND ONE SURFACE MOUNT KEY SWITCH - 20 PSF WIND LOAD (80 MPH WIND)
D3	4	NEW FRAME

ARCHITECT:

Old Engine Co. No. 2
460 Bush Street
San Francisco, CA 94108
415.773.0773 F. 415.773.1773



GENERAL NOTES

1. REPLACE ALL BROKEN GLASS WITH NEW IN-KIND MATERIAL-SALVAGE SOUND HISTORIC GLASS.
2. CATALOGUE, SALVAGE, AND PROTECT ALL WINDOWS IDENTIFIED FOR REPAIR AND REINSTALLATION. ALL REPAIR WORK BY CONTRACTOR LICENSED TO HANDLE LEAD INFUSED MATERIALS.
3. SEE SHEETS A9.0 & A9.1 FOR WINDOW DETAILS.
4. SEE SHEETS A9.2 & A9.3 FOR DOOR DETAILS.

REPAIR CODES

1. SEE GENERAL NOTE 2 ABOVE. WINDOW UNITS ARE WHOLE WITH NO MISSING WOOD ELEMENTS, REMOVE GLAZING & GLAZING PUTTY AND BLISTERED OR DEBONDED PAINT, REPAIR LOOSE JOINTS, RESTORE TO OPERATING CONDITION, PRIME, REINSTALL & RE-GLAZE.
2. SEE GENERAL NOTE 2 ABOVE. WINDOW UNITS CONTAIN MISSING OR FIRE DAMAGED WOOD ELEMENTS, REPLACE MISSING WOOD ELEMENTS WITH IN-KIND MATERIAL AND PROFILES, REMOVE GLAZING, GLAZING PUTTY AND BLISTERED OR DEBONDED PAINT, REPAIR LOOSE JOINTS IN EXISTING PORTION, RESTORE TO OPERATING CONDITION, PRIME, REINSTALL & RE-GLAZE, REFER TO WINDOW SURVEY.
3. WINDOW UNIT MISSING, RECONSTRUCT WITH IN-KIND MATERIAL AND PROFILE BASED ON DESIGN OF EXISTING, IN-TACT UNITS AND/OR THESE DRAWINGS, PRIME, INSTALL GLAZE.
4. DOOR HEAVILY DAMAGED, RECONSTRUCT WITH IN-KIND MATERIAL AND PROFILE BASED ON DESIGN OF EXISTING, IN-TACT UNITS, PRIME & INSTALL.

NO.	DATE	DESCRIPTION	BY	APP.
0	10/9/12	PERMIT SUBMITTAL	SN	NG

TABLE OF REVISIONS
CHECK WITH TRACING TO SEE IF YOU HAVE LATEST REVISION

REFERENCE INFORMATION
& FILE NO. OF SURVEYS



SAN FRANCISCO PORT COMMISSION
PORT OF SAN FRANCISCO
DEPARTMENT OF ENGINEERING

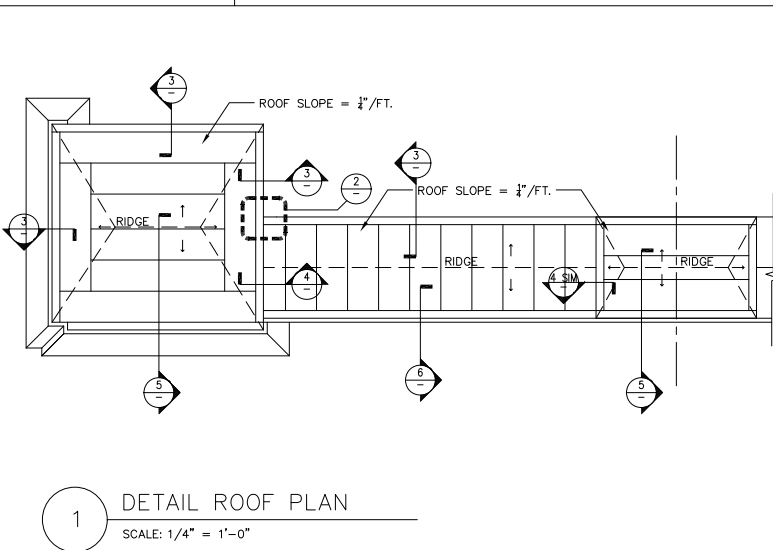
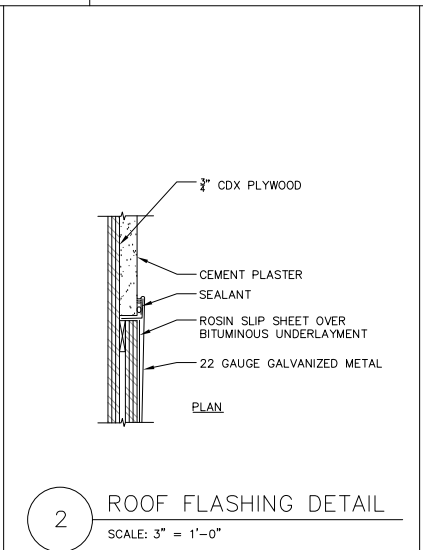
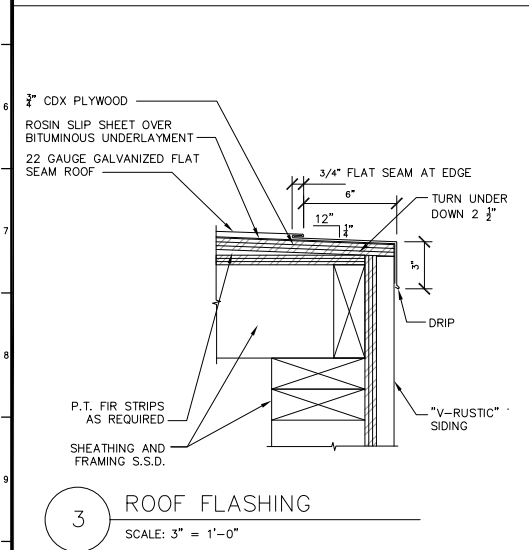
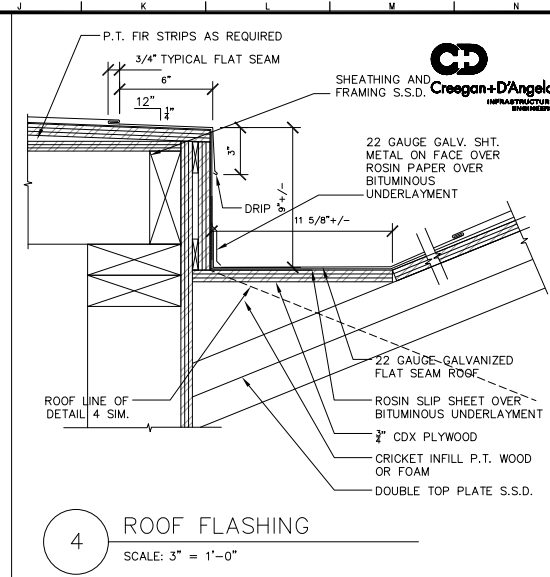
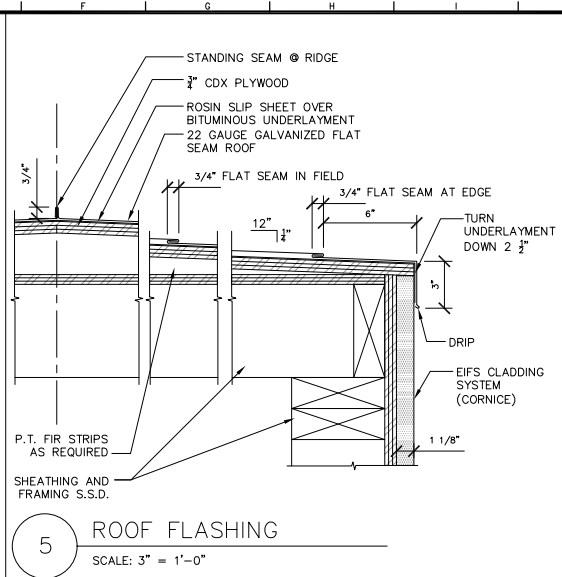
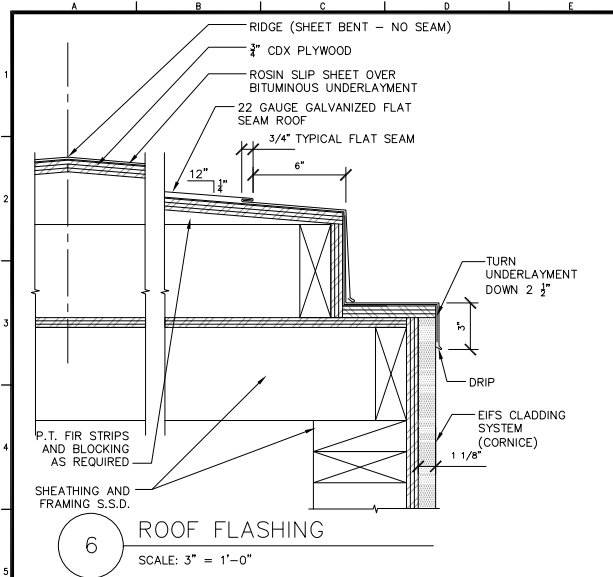
DESIGNED: DATE: 10/9/12
DRAWN: DATE: 10/9/12
CHECKED: DATE: 10/9/12
CD, SN

APPROVED BY: SAN FRANCISCO PORT COMMISSION
DATE: _____
CHIEF HARBOR ENGINEER

SHEET OF SHEETS
-

PIER 29
FIRE DAMAGE AND EMERGENCY REPAIRS
FIRE DAMAGE REHABILITATION
WINDOW SURVEY SCHEDULE #2
& DOOR SCHEDULE

CONTRACT NO.
DRAWING NO. A7.1
FILE NO.
REV. NO.



170 Columbus Ave., Suite 240
San Francisco, CA 94133
Tel: (415) 894-2010
Fax: (415) 894-2011
www.cdengineers.com

Creogan+D'Angelo
INFRASTRUCTURE ENGINEERS

ARCHITECT:
C&D ENGINEERS, INC.
460 Bush Street
San Francisco, CA 94108
415.773.0773 F. 415.773.1773

C&D ENGINEERS, INC.

CONTRACT NO.
DRAWING NO. **A8.0**
FILE NO.
REV. NO.

PIER 29
FIRE DAMAGE AND EMERGENCY REPAIRS
FIRE DAMAGE REHABILITATION
ROOF DETAILS

NO.	DATE	DESCRIPTION	BY	APP.
0	10/9/12	PERMIT SUBMITTAL	SN	NG
CHECK WITH TRACING TO SEE IF YOU HAVE LATEST REVISION				

REFERENCE INFORMATION & FILE NO. OF SURVEYS

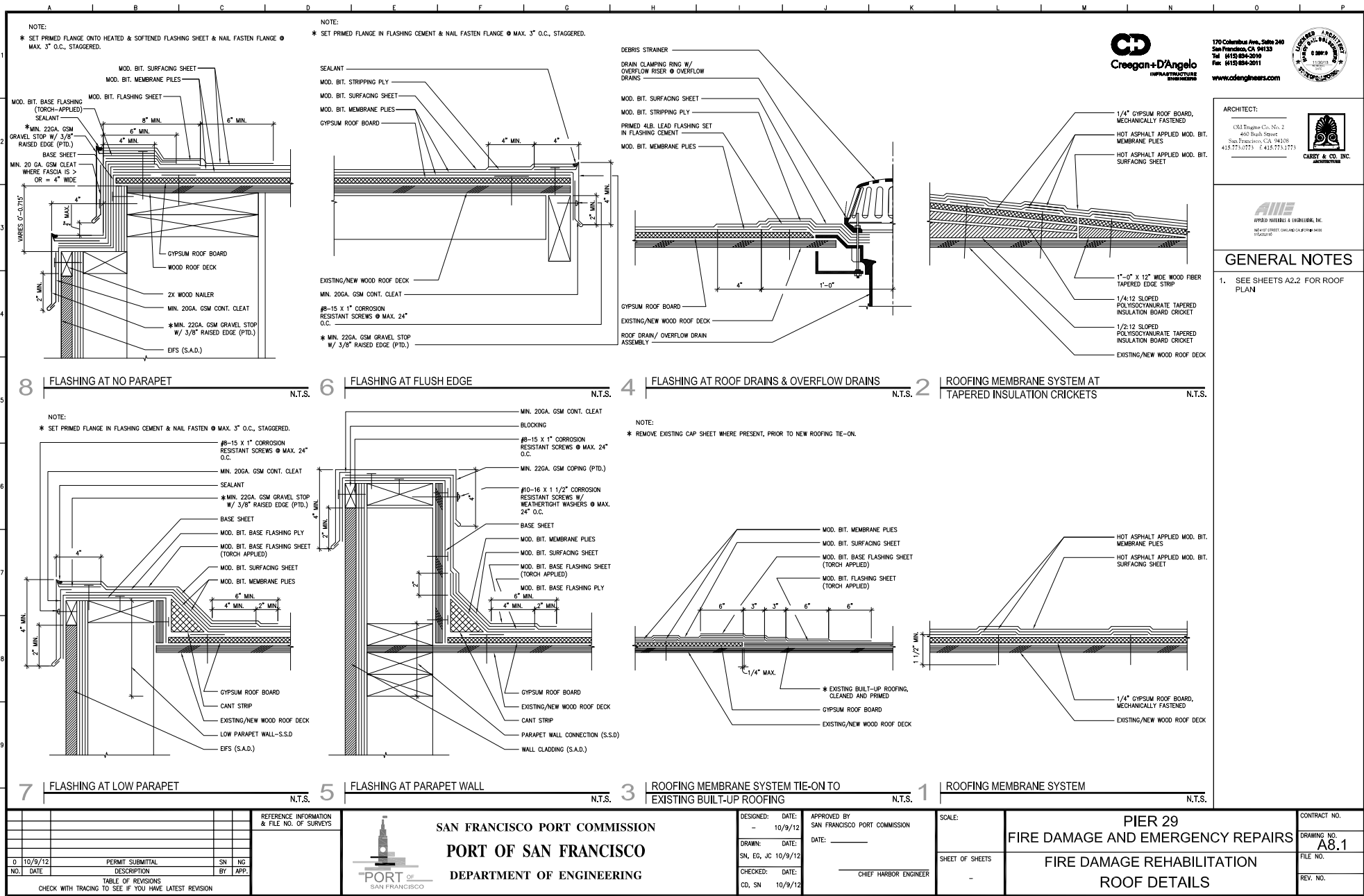
SAN FRANCISCO PORT COMMISSION
PORT OF SAN FRANCISCO
DEPARTMENT OF ENGINEERING

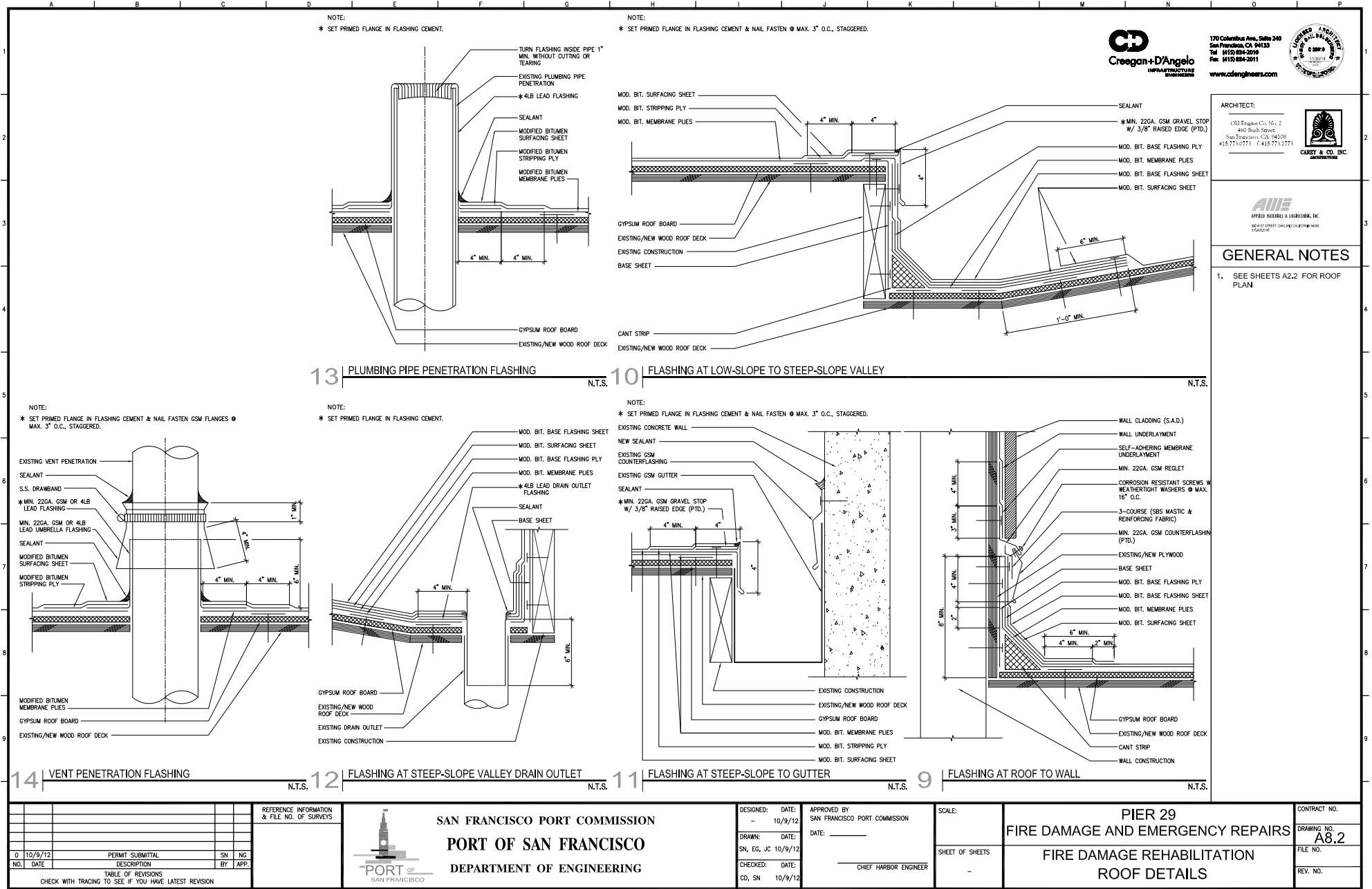
DESIGNED: DATE: 10/9/12	APPROVED BY: SAN FRANCISCO PORT COMMISSION
DRAWN: DATE: SN, EG, JC 10/9/12	DATE: _____
CHECKED: DATE: CD, SN 10/9/12	CHIEF HARBOR ENGINEER

SCALE:	
SHEET OF SHEETS	-

SCALE:	
SHEET OF SHEETS	-

PIER 29 FIRE DAMAGE AND EMERGENCY REPAIRS FIRE DAMAGE REHABILITATION ROOF DETAILS
--





170 Columbus Ave., Suite 240
San Francisco, CA 94133
Tel: (415) 894-2010
Fax: (415) 894-2011
www.cdengineers.com

ARCHITECT:

C&D ENGINEERS, INC.
4401 Bush Street
San Francisco, CA 94116
415.773.0773 • 415.773.1773

C&D & CO., INC.
ARCHITECTS

GENERAL NOTES

1. SEE SHEETS A2.2 FOR ROOF PLAN

NO.	DATE	DESCRIPTION	BY	APP.
0	10/9/12	PERMIT SUBMITTAL	SN	NG

CHECK WITH TRACING TO SEE IF YOU HAVE LATEST REVISION

REFERENCE INFORMATION & FILE NO. OF SURVEYS



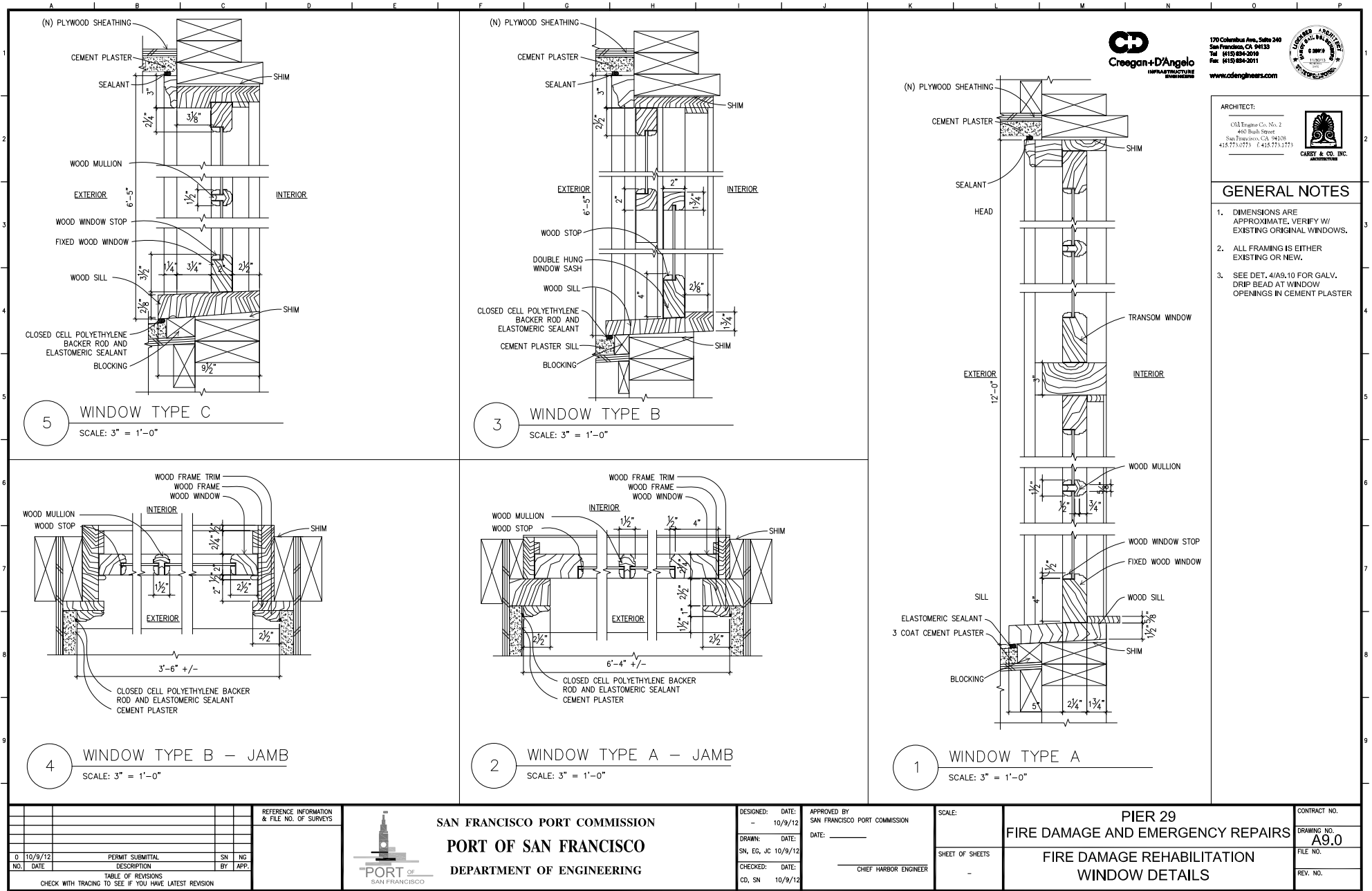
SAN FRANCISCO PORT COMMISSION
PORT OF SAN FRANCISCO
DEPARTMENT OF ENGINEERING

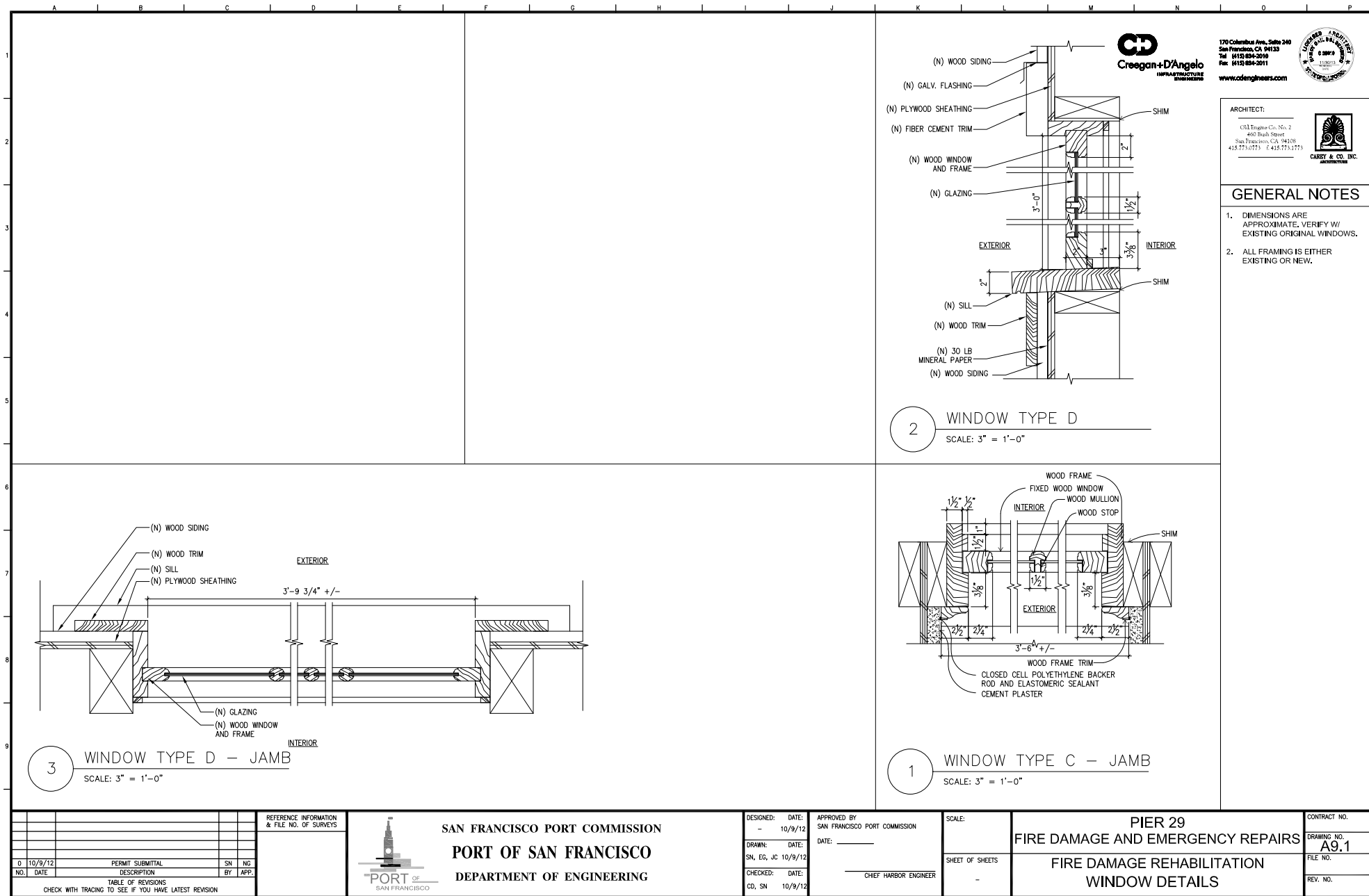
DESIGNED: DATE: 10/9/12	APPROVED BY: SAN FRANCISCO PORT COMMISSION
DRAWN: DATE: 10/9/12	DATE: _____
CHECKED: DATE: 10/9/12	CHIEF HARBOR ENGINEER
CD, SN	

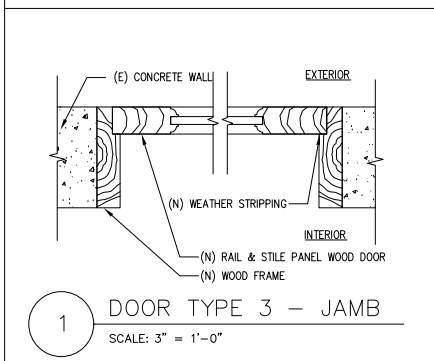
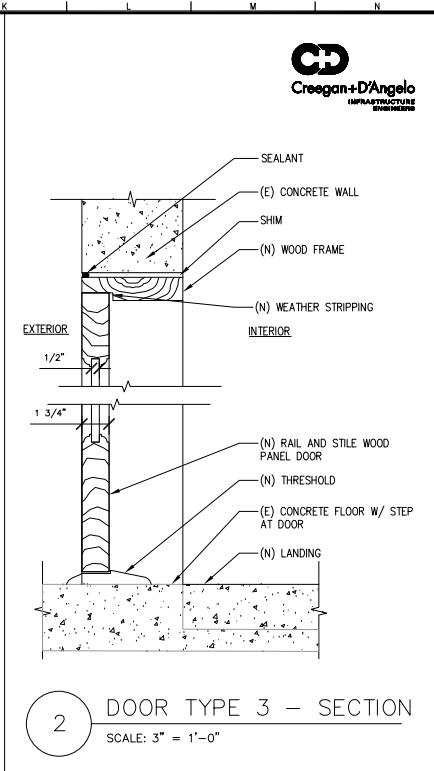
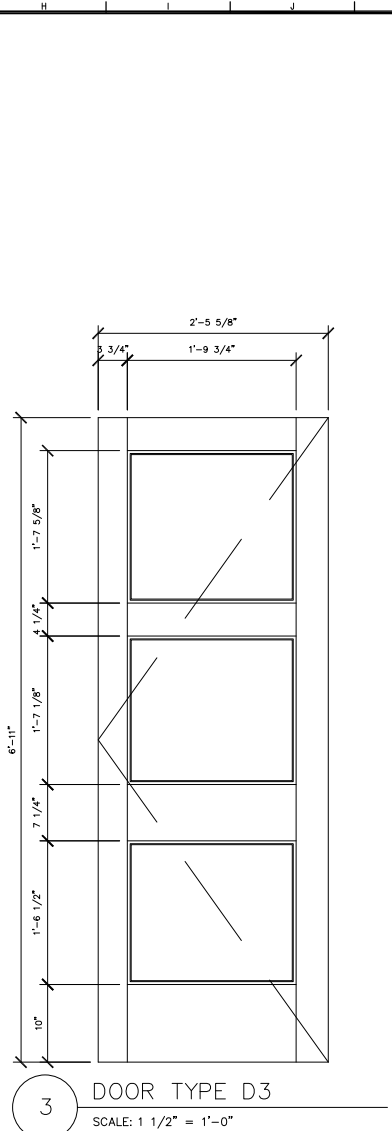
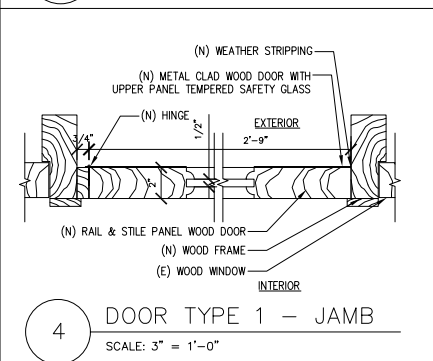
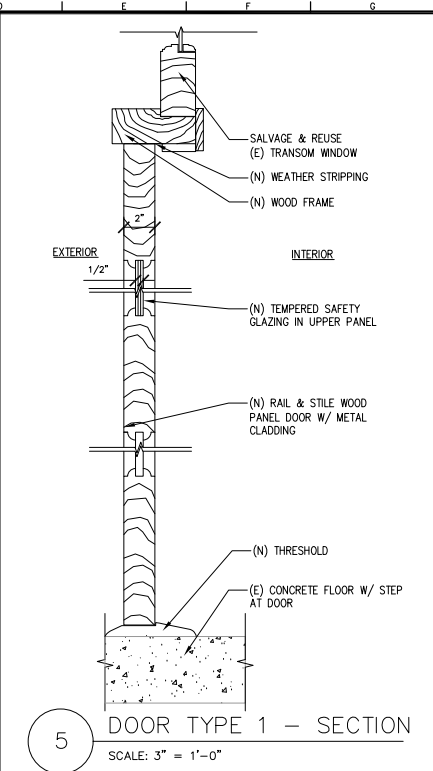
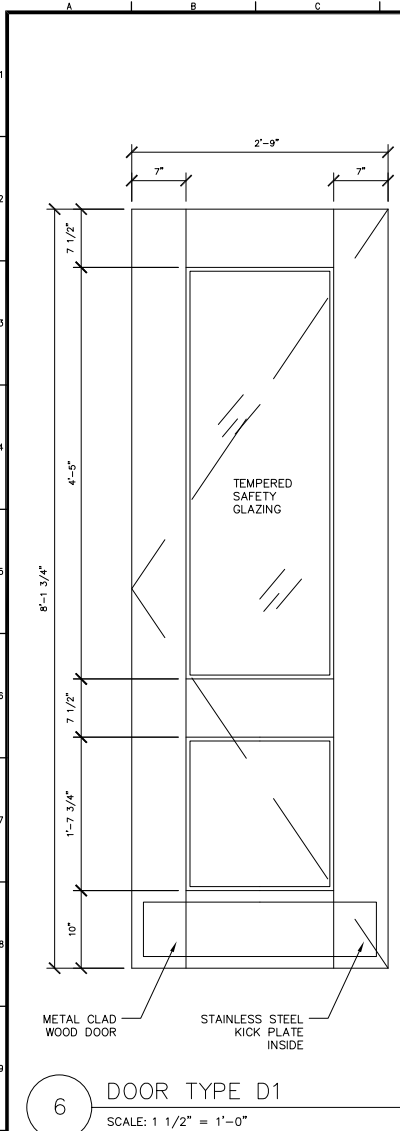
SCALE:
SHEET OF SHEETS

PIER 29
FIRE DAMAGE AND EMERGENCY REPAIRS
FIRE DAMAGE REHABILITATION
ROOF DETAILS

CONTRACT NO.
DRAWING NO. A8.2
FILE NO.
REV. NO.







170 Columbus Ave., Suite 240
San Francisco, CA 94133
Tel: (415) 894-2010
Fax: (415) 894-2011
www.cdengineers.com



ARCHITECT:
C&C Engineers Co., No. 2
460 Bush Street
San Francisco, CA 94108
415.773.0773 F. 415.773.1773
CARY & CO., INC.
ARCHITECTS

GENERAL NOTES

- DIMENSIONS ARE APPROXIMATIONS. VERIFY W/ EXISTING ORIGINAL OPENINGS.
- SEE SPECIFICATIONS FOR HARDWARE.
- ALL HARDWARE AND KEYING TO BE CHOSEN AND INSTALLED TO PORT OF SAN FRANCISCO STANDARD.
- SWING DOORS OUT - MODIFY DOORS TYPE 1 AND TYPE 3 JAMB AS REQUIRED.
- INSTALL ELECTRO-MECHANICAL DOOR OPERATOR TO DOOR HEAD AT DOOR TYPE 1.
- SEE DET. 4/A9.10 FOR GALV. DRIP BEAD AT DOOR TYPE 1 OPENING IN CEMENT PLASTER

NO.	DATE	DESCRIPTION	BY	APP.
0	10/9/12	PERMIT SUBMITTAL	SN	NG
TABLE OF REVISIONS				
CHECK WITH TRACING TO SEE IF YOU HAVE LATEST REVISION				

REFERENCE INFORMATION & FILE NO. OF SURVEYS



SAN FRANCISCO PORT COMMISSION
PORT OF SAN FRANCISCO
DEPARTMENT OF ENGINEERING

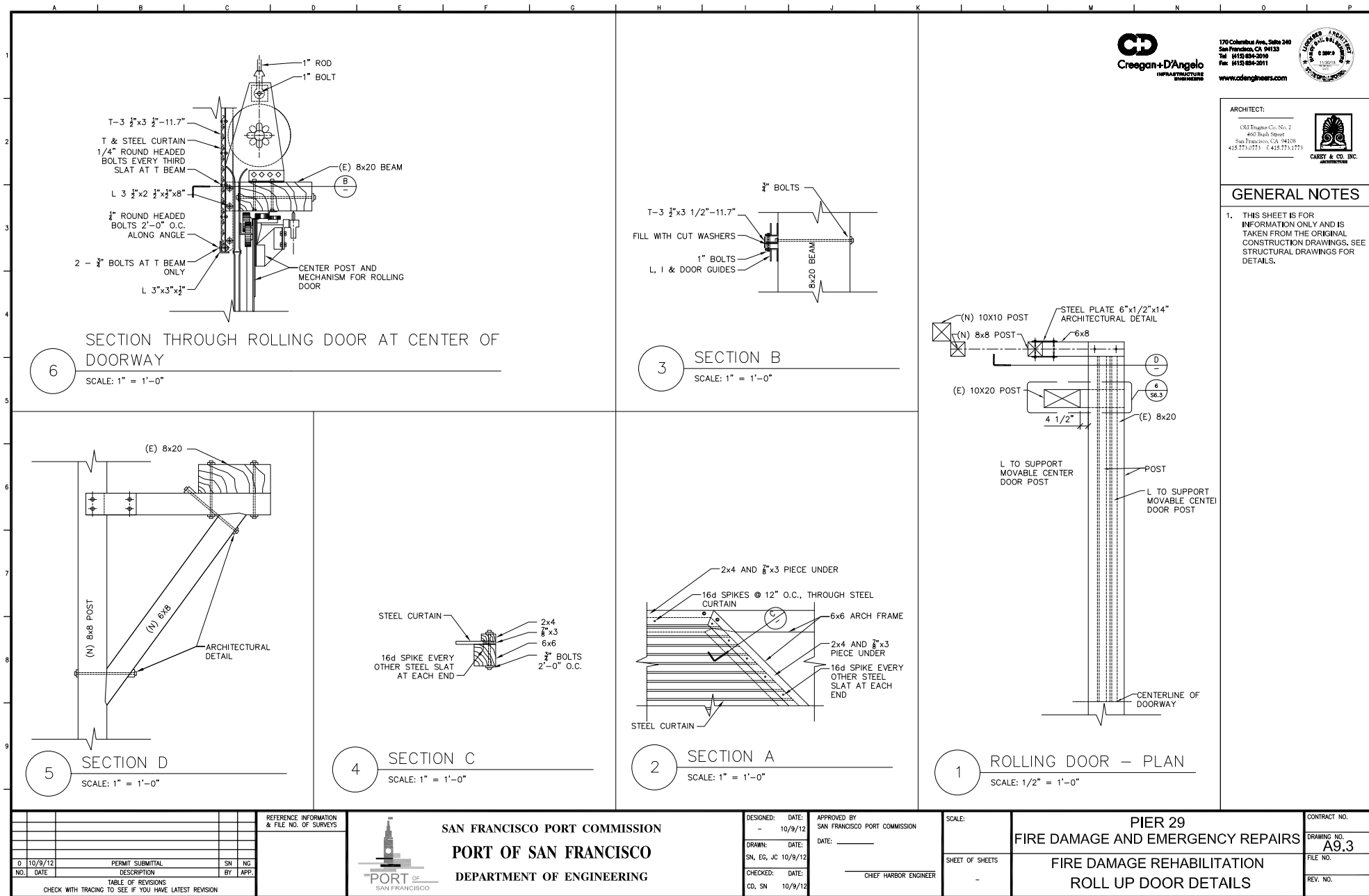
DESIGNED: DATE: 10/9/12
DRAWN: DATE: 10/9/12
CHECKED: DATE: 10/9/12
CD, SN

APPROVED BY: SAN FRANCISCO PORT COMMISSION
DATE: _____
CHIEF HARBOR ENGINEER

SCALE:
SHEET OF SHEETS

PIER 29
FIRE DAMAGE AND EMERGENCY REPAIRS
FIRE DAMAGE REHABILITATION
DOOR DETAILS

CONTRACT NO.
DRAWING NO. A9.2
FILE NO.
REV. NO.



170 Columbus Ave., Suite 240
San Francisco, CA 94133
Tel: (415) 894-2010
Fax: (415) 894-2011
www.cdengineers.com



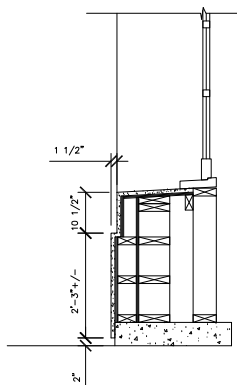
ARCHITECT:

Old Engine Co. No. 2
460 Bush Street
San Francisco, CA 94108
415.773.0773 F. 415.773.1773

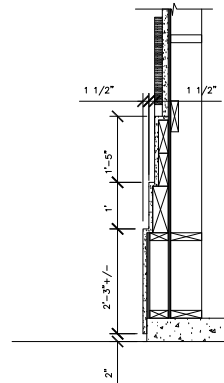


GENERAL NOTES

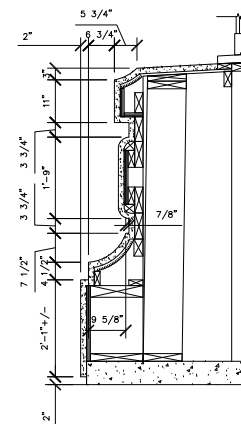
- THIS SHEET IS FOR INFORMATION ONLY AND IS TAKEN FROM THE ORIGINAL CONSTRUCTION DRAWINGS. SEE STRUCTURAL DRAWINGS FOR DETAILS.



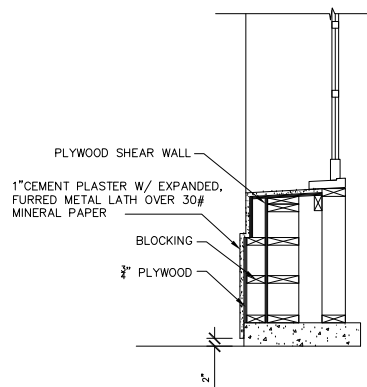
6 BASE AT WINDOW
SCALE: 3/4" = 1'-0"



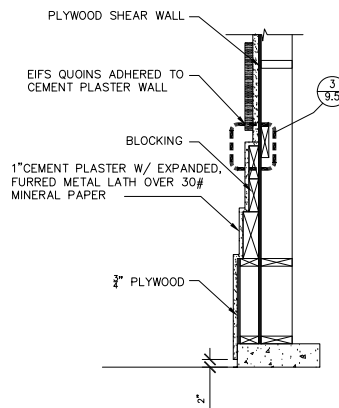
5 BASE AT QUOIN/ FLAT WALL
SCALE: 3/4" = 1'-0"



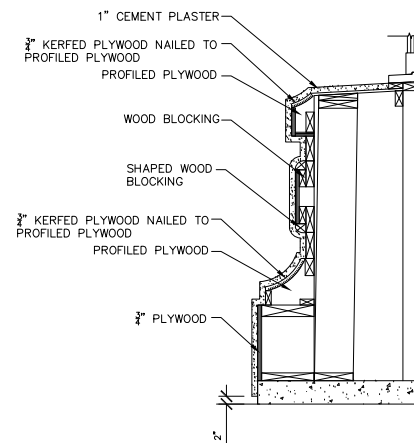
4 BASE AT PYLON
SCALE: 3/4" = 1'-0"



3 BASE AT WINDOW
SCALE: 3/4" = 1'-0"



2 BASE AT QUOIN/ FLAT WALL
SCALE: 3/4" = 1'-0"



1 BASE AT PYLON
SCALE: 3/4" = 1'-0"



170 Columbus Ave, Suite 240
San Francisco, CA 94133
Tel: (415) 894-2010
Fax: (415) 894-2011
www.cdengineers.com



ARCHITECT:
C&C ENGINEERS, INC.
460 Bush Street
San Francisco, CA 94108
415.773.0773 F. 415.773.1773
CARY & CO. INC.
ARCHITECTS

NO.	DATE	DESCRIPTION	BY	APP.
0	10/9/12	PERMIT SUBMITTAL	SN	NG

CHECK WITH TRACING TO SEE IF YOU HAVE LATEST REVISION

REFERENCE INFORMATION & FILE NO. OF SURVEYS
--



SAN FRANCISCO PORT COMMISSION
PORT OF SAN FRANCISCO
DEPARTMENT OF ENGINEERING

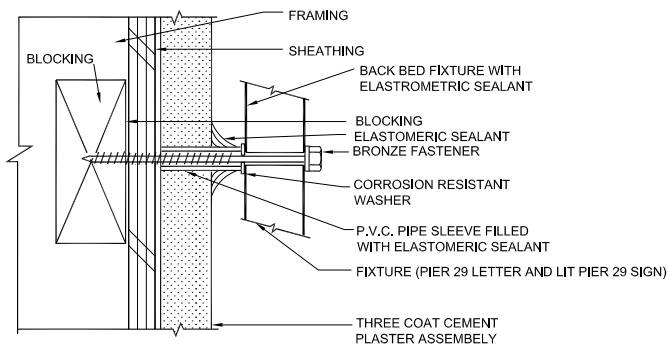
DESIGNED: DATE:	10/9/12
DRAWN: DATE:	10/9/12
CHECKED: DATE:	10/9/12

APPROVED BY:	SAN FRANCISCO PORT COMMISSION
DATE:	
CHIEF HARBOR ENGINEER	

SCALE:	
SHEET OF SHEETS	

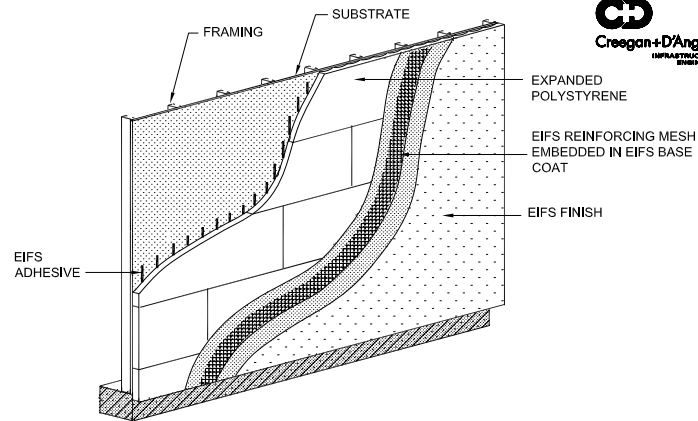
PIER 29 FIRE DAMAGE AND EMERGENCY REPAIRS
FIRE DAMAGE REHABILITATION CEMENT PLASTER DETAILS

CONTRACT NO.	
DRAWING NO.	A9.4
FILE NO.	
REV. NO.	



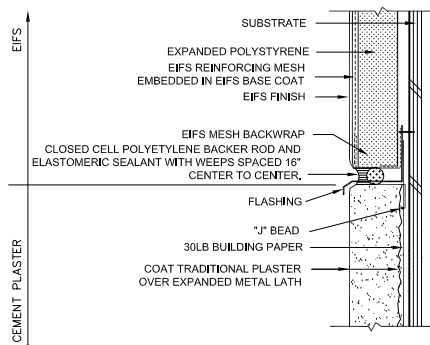
4 FIXTURE ATTACHMENT

SCALE: N.T.S.



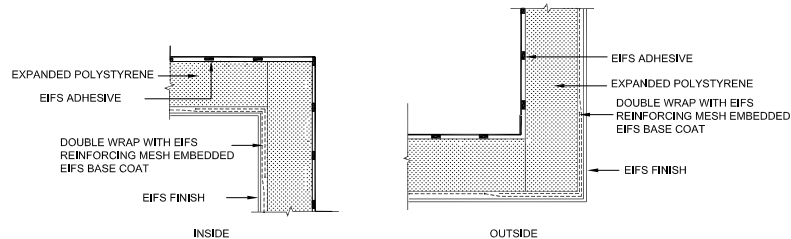
2 GENERIC EIFS SYSTEM COMPONENTS & APPLICATION

SCALE: N.T.S.



3 GENERIC EIFS/PLASTER CONNECTION

SCALE: N.T.S.



1 EIFS CORNERS

SCALE: N.T.S.



170 Columbus Ave., Suite 240
San Francisco, CA 94133
Tel: (415) 894-2010
Fax: (415) 894-2011
www.cdengineers.com



ARCHITECT:
C&C Engineers Co., No. 2
460 Bush Street
San Francisco, CA 94108
415.773.0773 F. 415.773.1773
CARY & CO., INC.
ARCHITECTS

GENERAL NOTES

NO.	DATE	DESCRIPTION	BY	APP.
0	10/9/12	PERMIT SUBMITTAL	SN	NG
TABLE OF REVISIONS				
CHECK WITH TRACING TO SEE IF YOU HAVE LATEST REVISION				

REFERENCE INFORMATION & FILE NO. OF SURVEYS



SAN FRANCISCO PORT COMMISSION
PORT OF SAN FRANCISCO
DEPARTMENT OF ENGINEERING

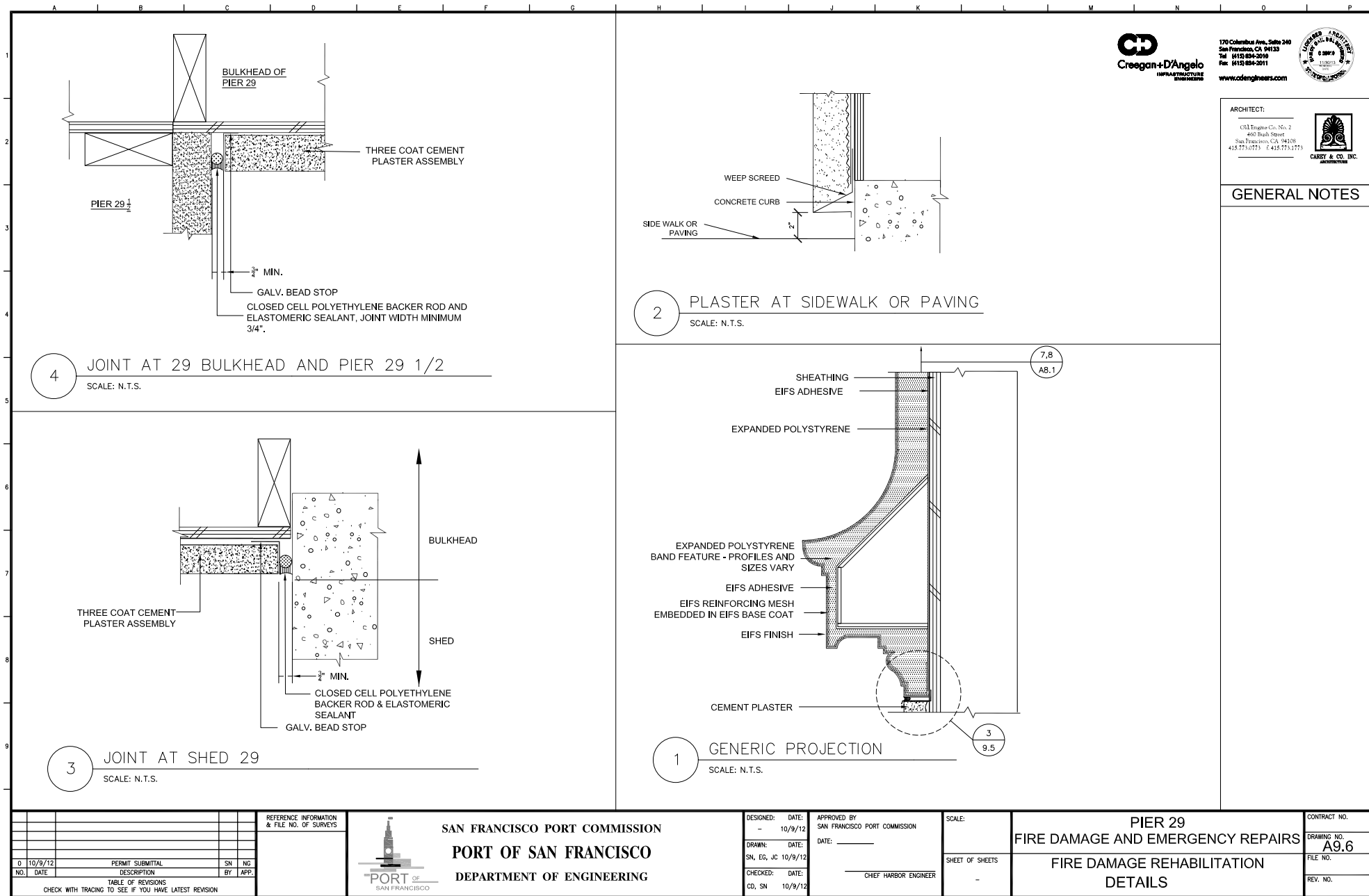
DESIGNED: DATE: 10/9/12
DRAWN: DATE: 10/9/12
CHECKED: DATE: 10/9/12
CD, SN

APPROVED BY: SAN FRANCISCO PORT COMMISSION
DATE: _____
CHIEF HARBOR ENGINEER

SCALE:
SHEET OF SHEETS
-

PIER 29 FIRE DAMAGE AND EMERGENCY REPAIRS
FIRE DAMAGE REHABILITATION DETAILS

CONTRACT NO.
DRAWING NO. A9.5
FILE NO.
REV. NO.



CD
Creogan+D'Angelo
INFRASTRUCTURE ENGINEERS

170 Columbus Ave., Suite 240
San Francisco, CA 94133
Tel: (415) 894-2010
Fax: (415) 894-2011
www.cdengineers.com



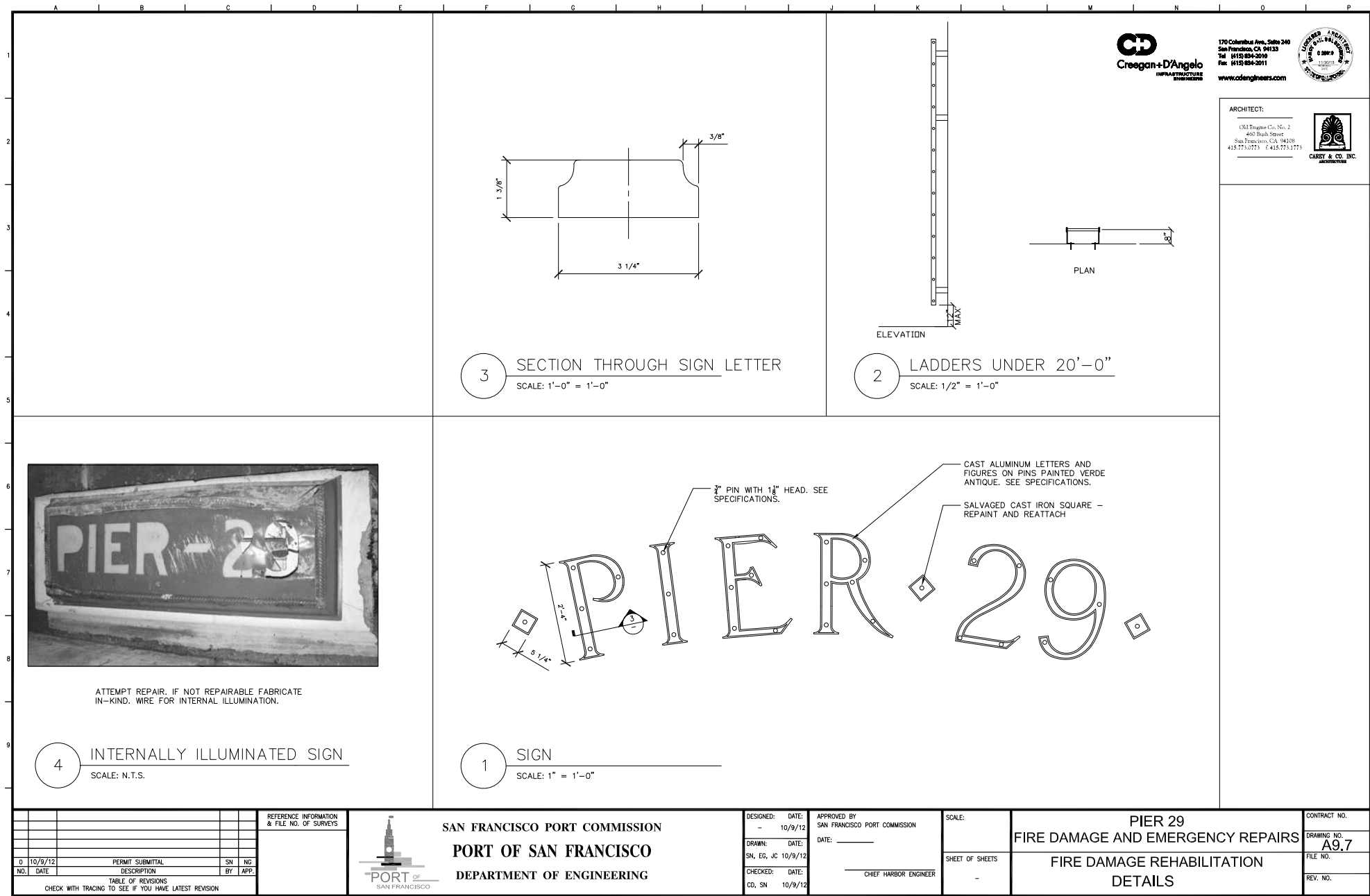
ARCHITECT:

C&M Engine Co., No. 2
460 Bush Street
San Francisco, CA 94108
415.773.0773 F. 415.773.1773



GENERAL NOTES

VIEW: PLOT1



Creagan+D'Angelo
INFRASTRUCTURE ENGINEERS

170 Columbus Ave., Suite 240
San Francisco, CA 94133
Tel: (415) 894-2010
Fax: (415) 894-2011
www.cdengineers.com



ARCHITECT:
Old Engine Co. No. 2
460 Bush Street
San Francisco, CA 94108
415.773.0773 F. 415.773.1773
CARDY & CO. INC.
ARCHITECTS



3 SECTION THROUGH SIGN LETTER
SCALE: 1'-0" = 1'-0"

2 LADDERS UNDER 20'-0"
SCALE: 1/2" = 1'-0"



ATTEMPT REPAIR. IF NOT REPAIRABLE FABRICATE
IN-KIND. WIRE FOR INTERNAL ILLUMINATION.

4 INTERNALLY ILLUMINATED SIGN
SCALE: N.T.S.

1 SIGN
SCALE: 1" = 1'-0"

SAN FRANCISCO PORT COMMISSION
PORT OF SAN FRANCISCO
DEPARTMENT OF ENGINEERING



DESIGNED: DATE: 10/9/12
-
DRAWN: DATE: 10/9/12
SN, EG, JC
CHECKED: DATE: 10/9/12
CD, SN

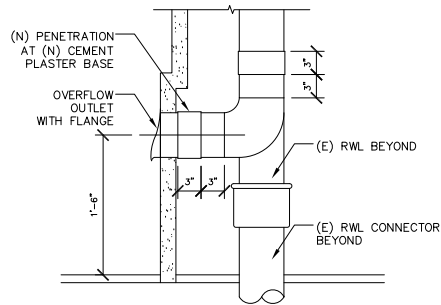
APPROVED BY
SAN FRANCISCO PORT COMMISSION
DATE: _____
CHIEF HARBOR ENGINEER

SCALE:
SHEET OF SHEETS
-

PIER 29
FIRE DAMAGE AND EMERGENCY REPAIRS
FIRE DAMAGE REHABILITATION
DETAILS

CONTRACT NO.
DRAWING NO. **A9.7**
FILE NO.
REV. NO.

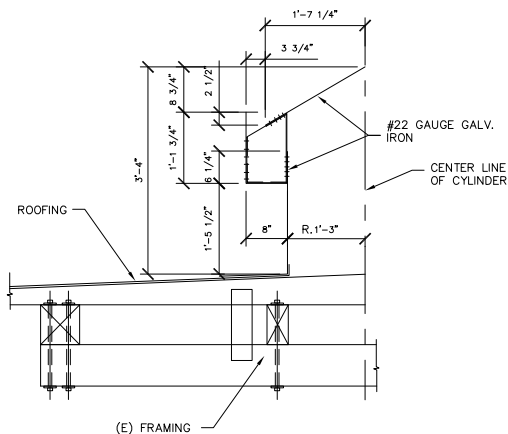
TABLE OF REVISIONS		REFERENCE INFORMATION & FILE NO. OF SURVEYS	
NO.	DATE	DESCRIPTION	BY APP.
0	10/9/12	PERMIT SUBMITTAL	SN NG
CHECK WITH TRACING TO SEE IF YOU HAVE LATEST REVISION			



6

ROOF OVERFLOW DRAIN PIPE AT WALL SECTION

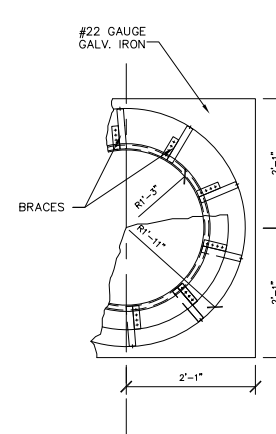
SCALE: N.T.S.



4

SECTION THROUGH VENTILATOR

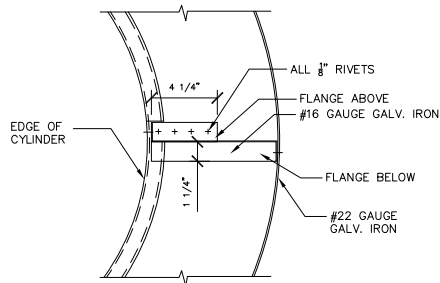
SCALE: 1" = 1'-0"



2

PLAN OF VENTILATOR

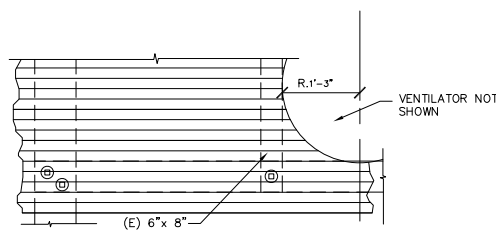
SCALE: 1" = 1'-0"



5

DETAIL PLAN OF VENTILATOR BRACE

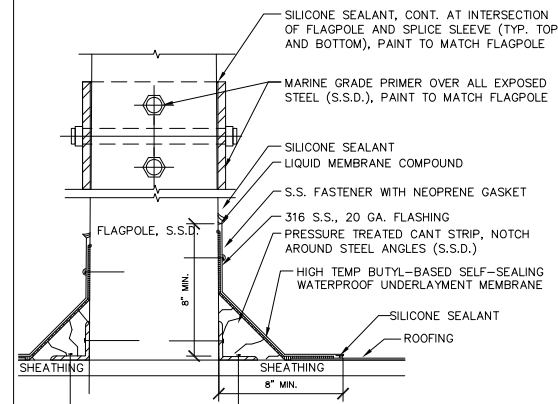
SCALE: 3" = 1'-0"



3

VENTILATOR PLAN AT ROOF

SCALE: 1" = 1'-0"



1

FLAG STAFF FLASHING

SCALE: 3" = 1'-0"



170 Columbus Ave., Suite 240
San Francisco, CA 94133
Tel: (415) 894-2010
Fax: (415) 894-2011
www.cdengineers.com



ARCHITECT:

Old Engine Co. No. 2
460 Bush Street
San Francisco, CA 94108
415.773.0773 F. 415.773.1773



NO.	DATE	DESCRIPTION	BY	APP.
0	10/9/12	PERMIT SUBMITTAL	SN	NG
TABLE OF REVISIONS				
CHECK WITH TRACING TO SEE IF YOU HAVE LATEST REVISION				

REFERENCE INFORMATION & FILE NO. OF SURVEYS



SAN FRANCISCO PORT COMMISSION
PORT OF SAN FRANCISCO
DEPARTMENT OF ENGINEERING

DESIGNED: DATE: 10/9/12
DRAWN: DATE: 10/9/12
CHECKED: DATE: 10/9/12
CD, SN

APPROVED BY: SAN FRANCISCO PORT COMMISSION
DATE: _____
CHIEF HARBOR ENGINEER

SHEET OF SHEETS
-

PIER 29 FIRE DAMAGE AND EMERGENCY REPAIRS
FIRE DAMAGE REHABILITATION DETAILS

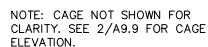
CONTRACT NO.
DRAWING NO. A9.8
FILE NO.
REV. NO.



SCALE: $3/4" = 1'-0"$

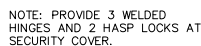


4) SCALE: 6" = 1'-0"



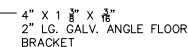
FRONT ELEVATION W/O CAGE

SCALE: 1/2" = 1'-0"



FRONT ELEVATION

SCALE: 1/2" = 1'-0"



SIDE ELEVATION

SCALE: 1/2" = 1'-0"



ARCHITECT:

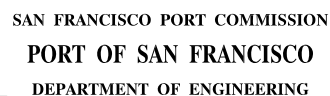
Old Engine Co. No. 2
460 Bush Street
San Francisco, CA 94108
415.773.0773 F 415.773.1773



CAREY & CO.

TABLE OF REVISIONS
CHECK WITH TRACING TO SEE IF YOU HAVE LATEST REVISION

REFERENCE INFORMATION
& FILE NO. OF SURVEYS



APPROVED BY
SAN FRANCISCO PORT COMMISSION
DATE: _____

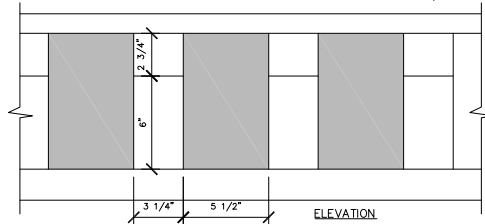
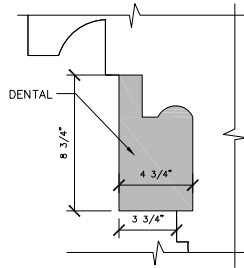
CHIEF HARBOR ENGINEER

SCALE:
SHEET OF SHEETS

PIER 29 FIRE DAMAGE AND EMERGENCY REPAIRS
FIRE DAMAGE REHABILITATION DETAILS

S	CONTRACT NO.
	DRAWING NO. A9.9
	FILE NO.
	REV. NO.

SECTION



6

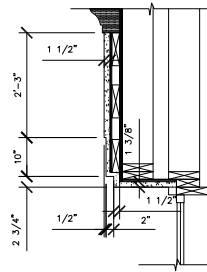
DENTALS

SCALE: 3" = 1'-0"

5

WALL ABOVE UPPER WINDOWS

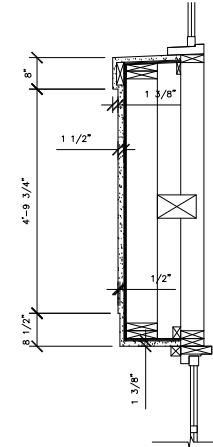
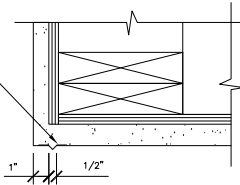
SCALE: 3/4" = 1'-0"



4

WALL BETWEEN LOWER
& UPPER WINDOWS

SCALE: 3/4" = 1'-0"

GALV. METAL DRIP
INSTALLED AT WINDOW
AND DOOR HEADS

4

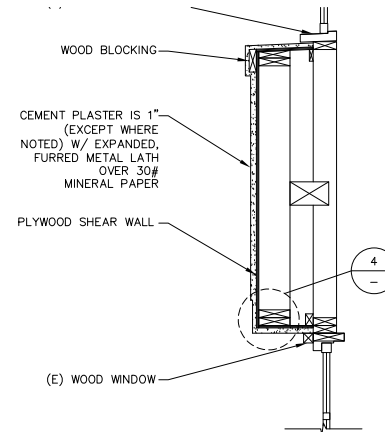
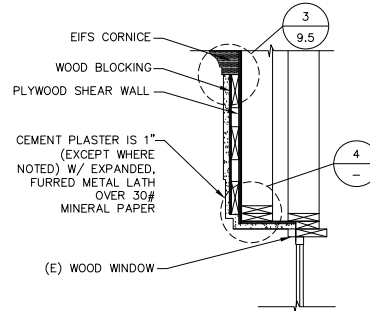
DRIP AT OPENINGS

SCALE: 3" = 1'-0"

2

WALL ABOVE UPPER WINDOWS

SCALE: 3/4" = 1'-0"



1

WALL BETWEEN LOWER
& UPPER WINDOWS

SCALE: 3/4" = 1'-0"

CH
Creagan+D'Angelo
INFRASTRUCTURE
ENGINEERS

170 Columbus Ave., Suite 240
San Francisco, CA 94133
Tel: (415) 894-2010
Fax: (415) 894-2011
www.cdengineers.com



ARCHITECT:

Old Engine Co. No. 2
460 Bush Street
San Francisco, CA 94108
415.773.0773 F. 415.773.1773



NO.	DATE	DESCRIPTION	BY	APP.
0	10/9/12	PERMIT SUBMITTAL	SN	NG
TABLE OF REVISIONS				
CHECK WITH TRACING TO SEE IF YOU HAVE LATEST REVISION				

REFERENCE INFORMATION
& FILE NO. OF SURVEYS



SAN FRANCISCO PORT COMMISSION
PORT OF SAN FRANCISCO
DEPARTMENT OF ENGINEERING

DESIGNED: DATE: 10/9/12
-
DRAWN: DATE: 10/9/12
SN, EG, JC
CHECKED: DATE: 10/9/12
CD, SN

APPROVED BY
SAN FRANCISCO PORT COMMISSION
DATE: _____
CHIEF HARBOR ENGINEER

SCALE:
SHEET OF SHEETS
-

PIER 29
FIRE DAMAGE AND EMERGENCY REPAIRS
FIRE DAMAGE REHABILITATION
CEMENT PLASTER DETAILS

CONTRACT NO.
DRAWING NO. A9.10
FILE NO.
REV. NO.

VIEW: PLOT1