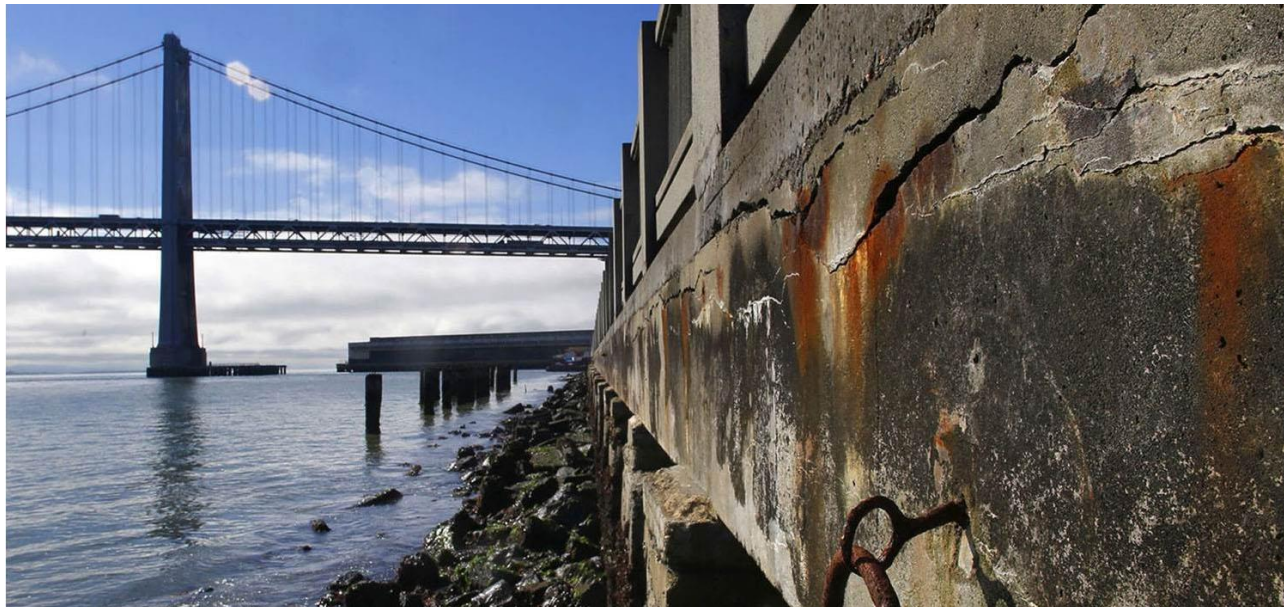


PRE-SUBMITTAL CONFERENCE: PLANNING, ENGINEERING, ENVIRONMENTAL SERVICES RFP

Port of San Francisco, Pier 1
May 3, 2017



Agenda

- Introductions
- Background – “Seawall Resiliency Project”
- Scope of Work
- Proposal Submission Requirements
- Selection Process
- CMD Requirements
- First Source Hiring Requirements
- Questions
- Networking

Planning, Engineering, Environmental Services: Introductions

- Carlos Colón, Project Administrator
- Steven Reel, Project Manager
- Finbarr Jewell, Contract Monitoring Division Compliance Officer
- Boris Delepine, Contract Administrator

<http://sfport.com/planning-engineering-and-environmental-services-seawall-resiliency-project>

Planning, Engineering, Environmental Services: Background

Seawall

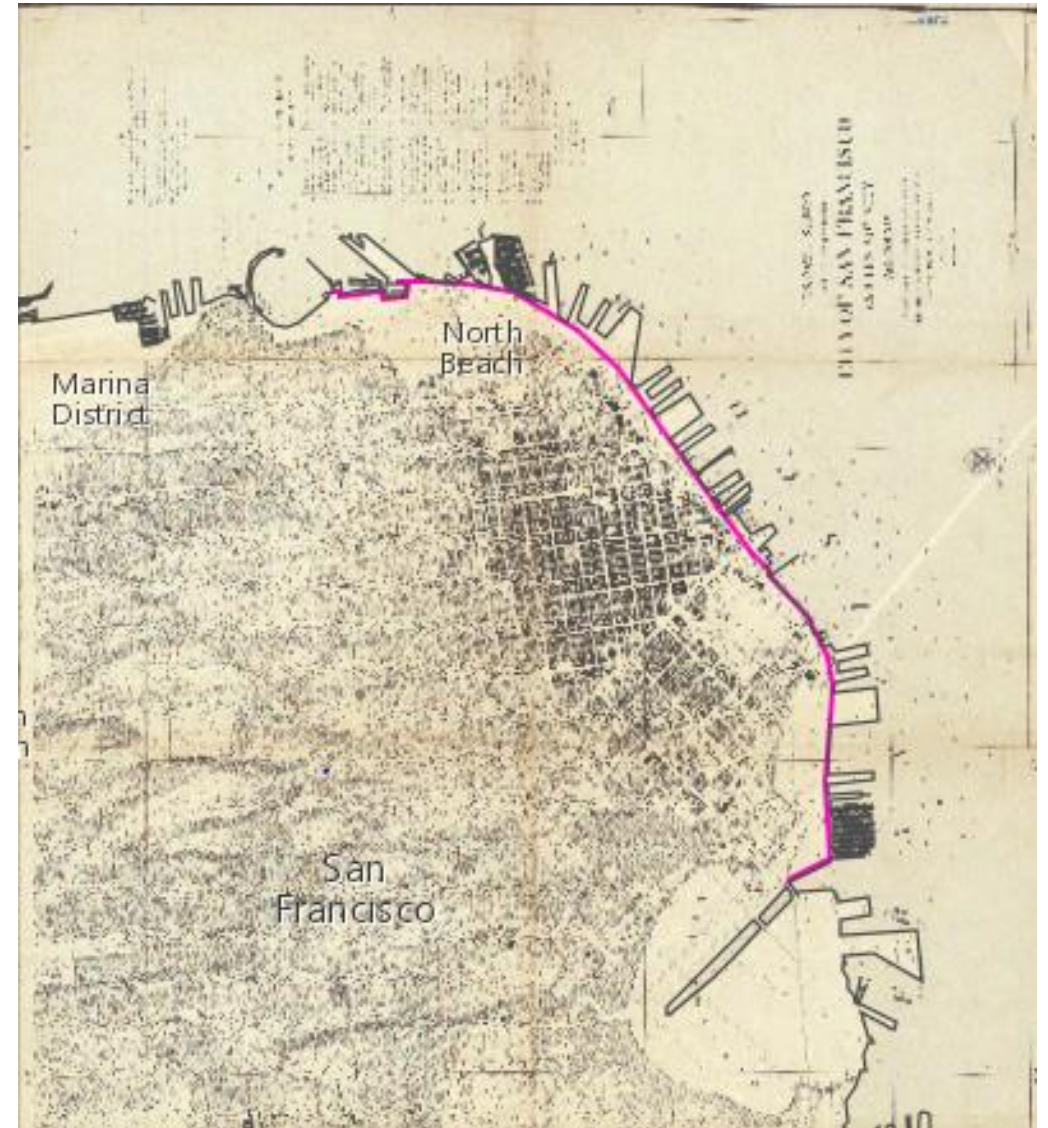
- Constructed 1878 to 1915+/- (Bulkheads Replaced 20's/30's)
- 3 miles from Fisherman's Wharf to Mission Creek
- Includes rock dike, bulkhead wall, bulkhead wharves
- Protects Embarcadero land & infrastructure, connects Piers, provides shoreline and flood protection.

Initial Studies

- Sea Level Rise Adaptation Study (URS/AGS, 6/2012)
- Sea Level Rise Inundation Mapping (AECOM, 3/2016)
- Earthquake Vulnerability Study (GHD/GTC, 7/2016)
 - Peer Review (COWI/LANGAN)
- USACE CAP 103 Federal Interest Determination (11/2016)

Seawall Resiliency Project

- Complete a Multi-Hazard Risk Assessment
- Develop Overall Seawall Resiliency Program (\$5B est.)
- Design and Construct Initial Projects (\$500M est.)



Planning, Engineering, Environmental Services: Scope of Work

Phase 1 – Planning & Program Development

- Existing Conditions Review
- Multi-Hazard Risk Assessment
- Alternatives Development, Analysis, and Preferred Program

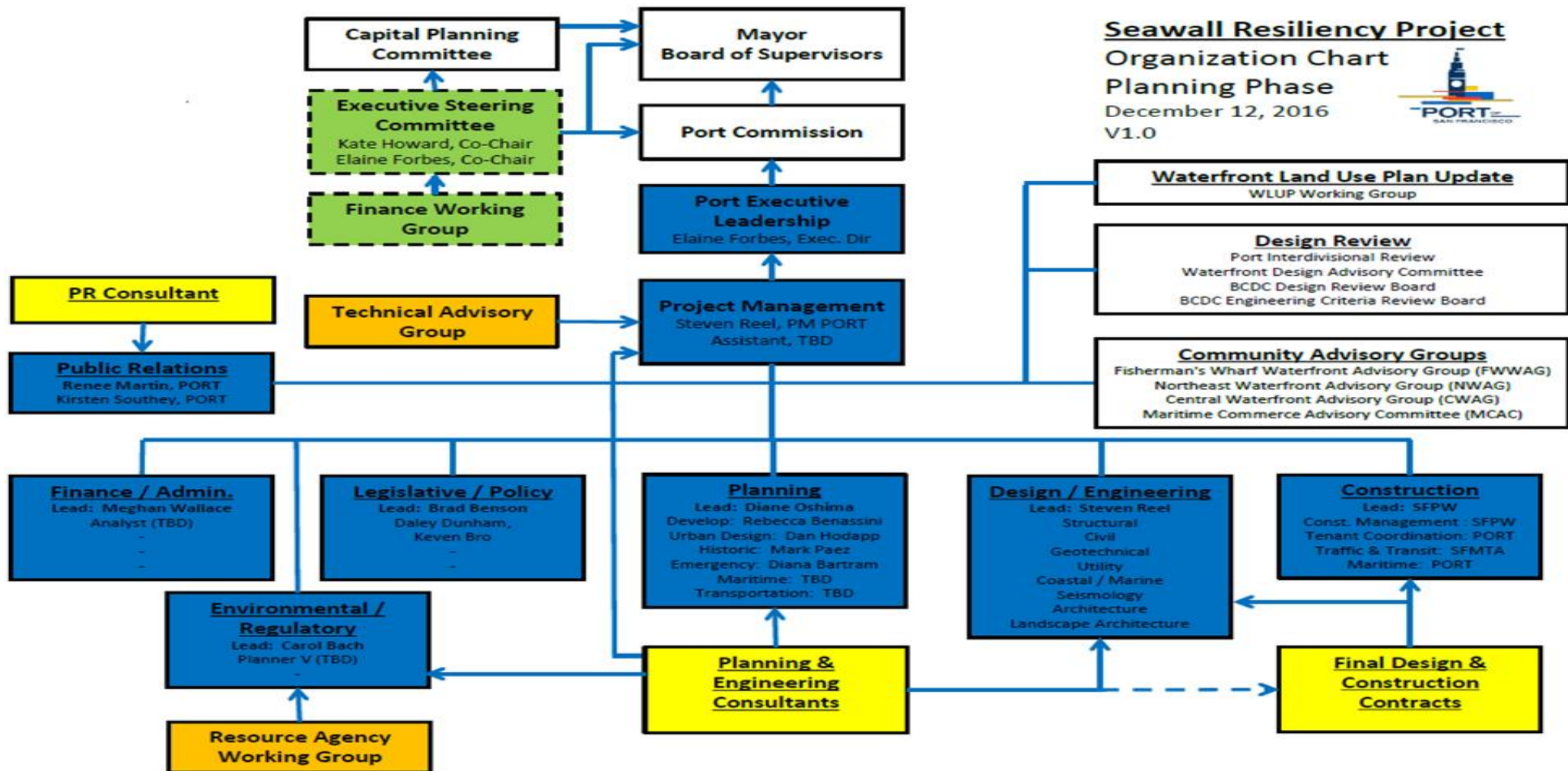
Phase 2 – Preliminary Design, Engineering & Environmental Compliance

- Initial Projects: Advance to 35% Design & Engineering
- Complete NEPA, CEQA and Environmental Permits
- Emergency Projects: Design & Engineering
- Pilot Projects: Design & Engineering

Phase 3 – Support Services during Final Design, Engineering & Construction

- Design Review and Independent Check
- Value Engineering
- Permit Assistance

Planning, Engineering, Environmental Services: Project Organizational Chart



Planning, Engineering, Environmental Services: Proposal Requirements

Time and Place of Submission

- Proposals can be delivered in person here at Pier 1 or mailed to:
Carlos Colón
Port of San Francisco
Pier 1, Embarcadero
San Francisco, CA 94111
- Responses must be received by 12:00 pm on Thursday, June 2, 2017

Proposal Package

- ONE (1) original printed proposal labeled “Original”
- References in sealed envelope or from reference
- TWO (2) copies of required CMD forms in a separate sealed envelope
- ONE (1) CD-ROM or Flash Drive containing entire contents of proposal
- SEVEN (7) complete printed copies of RFP Section III.C

Planning, Engineering, Environmental Services: Minimum Qualifications – Prime Proposer or Lead JV

- Minimum of fifteen (15) years' experience in the business of planning and design civil infrastructure projects
- Design and engineering of at least one (1) substantially completed major infrastructure project with a minimum project construction value of \$200 million, within the last fifteen (15) years
- Two (2) completed coastal infrastructure projects, each with a minimum project construction value of \$50 million, within the last fifteen (15) years
- Functioning office located within 60 miles from the Port Office in San Francisco (or be willing to establish the office by NTP).

Planning, Engineering, Environmental Services: Minimum Qualifications – Key/Lead Staff

Project Manager

- Employee of Prime Proposer for at least 6 months;
- Ten (10) years experience in planning, design, and management of large, complex infrastructure projects (>\$20M);
- California registration

Lead Structural Engineer

- Twelve (12) years' experience in the design and assessment of coastal infrastructures and buildings
- Three (3) verifiable infrastructure projects in high risk earthquake areas, each with a construction value of at least \$5M, and at least one (1) of which includes a seawall, wharf, or pier
- California Licensed Civil or Structural Engineer

Lead Geotechnical Engineer

- Twelve (12) years of geotechnical investigation and site characterization experience
- Three (3) verifiable coastal infrastructure projects in high risk earthquake areas
- California Licensed Geotechnical Engineer

Lead Environmental Manager

- Twelve (12) years of professional experience managing complex environmental review and permitting, including serving as an environmental manager for a similar scope of environmental services within the past seven (7) years
- Three (3) projects in San Francisco Bay requiring permits from USACE, RWQCB, BCDC, and NMFS, at least one of which was a project with a construction value greater than \$25M?

Planning, Engineering, Environmental Services: Insurance

- Section 5.1 of Terms and Conditions
 - Workers' Compensation not less than \$1,000,000
 - Commercial General Liability Insurance not less than \$1,000,000
 - Commercial Automobile Liability Insurance not less than \$1,000,000
 - Professional Liability not less than \$1,000,000
 - Manuscripted Additional Insured Endorsements naming the City and County of San Francisco, the Port of San Francisco, its Officers, Agents, and Employees

Planning, Engineering, Environmental Services: Contents of Submittal

Proposal Section	Length
1. Cover Letter	2 pages maximum
2. Executive Summary	2 pages maximum
3. Work Approach	10 pages maximum
4. Task Descriptions	12 pages maximum
5. Project Schedule	5 pages maximum
6. Staffing Plan, Staff Qualifications, & Availability	8 pages max (resumes separate)
7. Proposer Qualifications	No maximum
8. References (sealed or submitted by reference)	3 evaluation forms
9. Minimum Qualifications – Completed Appendix F	No maximum
10. Fee Proposal (Only Shortlisted Firms)	No maximum

Up to Four Highest Ranked Proposers will be Invited to Oral Interviews

Planning, Engineering, Environmental Services: Selection Process

- Evaluation of Responsiveness and Minimum Qualifications
- CMD Requirements
- Evaluation of Written Proposal (100 points) & References (5 Points)
 - Understanding and Approach to the Work (30 points)
 - Proposed Staff: Organization, Experience, Quality (40 points)
 - Firm Experience and Capability (30 points) **changed, was 25 pts**
 - References (5 points)
- Short List: Four Highest Ranked Proposers will be Invited to Oral Interviews
- Oral Interviews (100 points)
- Final Scoring: Written Proposal + References + Oral Interview (max 205 points)
- Contract Negotiations
- Port Commission Award
- Board of Supervisors Award

Planning, Engineering, Environmental Services: Schedule

Activity	Target Date
Deadline of RFP Questions	May 8, 2017
Deadline of RFP Answers	May 11, 2017
Deadline for RFP Proposals	June 2, 2017
Notice of Intent to Award	June 26, 2017
Port Commission Meeting	July 11, 2017
Board of Supervisors	July 25, 2017

Check www.sfport.com for updates. All dates are subject to change.

Planning, Engineering, Environmental Services: CMD Requirements

- CMD Attachment II
- LBE Subcontracting Requirement – 15%
- Rating Bonus (No Bonus. Contract > \$10M)
- Good Faith Outreach Requirements
- 12B Equal Benefits Compliance
- LBE Certification

Finbarr Jewell, 415-274-0511, finbarr.jewell@sfgov.org

Planning, Engineering, Environmental Services: Responsive Example

CITY AND COUNTY OF SAN FRANCISCO
CONTRACT MONITORING DIVISION



CHAPTER 14B
CMD ATTACHMENT 2

Architecture, Engineering, and Professional Services

FORM 2A: CMD CONTRACT PARTICIPATION FORM

Section 1: This form must be submitted with the proposal or the proposal may be deemed non-responsive and rejected. Prime Proposer, each Joint Venture Partner, Subconsultants, Vendors, and lower sub tiers must be listed on this form. Only CMD certified Small and/or Micro-LBEs can be used to meet the LBE subconsultant participation requirement unless the RFP allows for SBA-LBE subconsultants to count towards the LBE participation requirement. A Small and/or Micro-LBE Prime proposer/JV with LBE participation must meet the LBE subconsultant requirement. A Small and/or Micro-LBE Prime proposer/JV with LBE participation may not count its participation towards meeting the LBE subconsultant participation requirement. Be sure to check box for Rating Bonus. If more space is needed, attach additional copies of this form. This form is also completed and submitted for all contract modifications which exceed the original contract amount by more than 20%.

Contract:	Mission Bay Ferry Landing Architectural and Engineering Consulting Services, RFP	RATING BONUS	
Firm:	A&J Consulting Engineering Services.	<input type="checkbox"/> LBE 10%	<input type="checkbox"/> Joint Venture 7.5%
Contact Person:	Mr. A Smith	<input type="checkbox"/> Joint Venture 5%	<input type="checkbox"/> Joint Venture 10% (LBEs ONLY)
Address:	164 Brighton Ave. Brooklyn	<input checked="" type="checkbox"/> No Rating Bonus Requested	
City/ZIP:	New York, 07012	LBE Requirement 20 %	
Phone:	1-977-777-1442		

*Type: Identify if prime (P), JV partner (J), Subconsultant (S), or Vendor (V)

TYPE *	Firm	PORTION OF WORK (describe scope(s) of work)	% OF WORK	INDICATE LBE YES/NO	If an LBE, Identify MBE, WBE, or OBE **	% OF LBE SUBWORK (CARRY-OVER FROM % OF WORK COLUMN)
P	Bertin Engineering Associates	Structural Engineering / Project Management	65 %	No		%
J	Fastech Consultaing	Environmental Consultant	10 %	Yes	MBE	10 %
J	AI Engineers	Civil Engineering Consultant	15 %	Yes	WBE	15 %
J	AB Consulting	Geo-Technical Consultant	10 %	No		%
			Total % of Work: 100%	Total LBE Subconsulting%		25 %

I declare, under penalty of perjury under the laws of the State of California, that I am utilizing the above Consultants for the portions of work and amounts as reflected in the Proposal for this Contract.

Owner/Authorized Representative (Signature): _____ Date: _____
Print Name and Title: Mr. Bertin, VP

** MBE = Minority Business Enterprise, WBE = Women Business Enterprise, OBE = Other Business Enterprise. See CMD website: <http://sfgov.org/cmd> for each firm's status.

Correct:

TYPE *	Firm	PORTION OF WORK (describe scope(s) of work)	% OF WORK	INDICATE LBE YES/NO	If an LBE, Identify MBE, WBE, or OBE **	% OF LBE SUBWORK (CARRY-OVER FROM % OF WORK COLUMN)
P	Bertin Engineering Associates	Structural Engineering / Project Management	65 %	No		%
J	Fastech Consultaing	Environmental Consultant	10 %	Yes	MBE	10 %
J	AI Engineers	Civil Engineering Consultant	15 %	Yes	WBE	15 %
J	AB Consulting	Geo-Technical Consultant	10 %	No		%
			Total % of Work: 100%	Total LBE Subconsulting%		25 %

Incorrect:

TYPE *	Firm	PORTION OF WORK (describe scope(s) of work)	% OF WORK	INDICATE LBE YES/NO	If an LBE, Identify MBE, WBE, or OBE **	% OF LBE SUBWORK (CARRY-OVER FROM % OF WORK COLUMN)
P	RSD Engineering P.C.	Engineering Consultant / Project Management	50 %	Yes	OBE	50 %
J	R.A. German Architect, PC	Archite	TBD %	Yes	MBE	TBD %
J	Project Management Technologies, Inc.	Cost Estimating	TBD %	Yes	MBE	TBD %
J	Precision Engineering and Surveying, INC.	Surveying	TBD %	YES	WBE	TBD %
			Total % of Work: 100%	Total LBE Subconsulting%		TBD %

Planning, Engineering, Environmental Services: Schedule

- Deadline for RFP Questions – May 8, 2017 at 5:00PM
- Answer to RFP Questions – May 11, 2017 at 5:00PM

RFP responses are due on June 2, 2017 at 12:00PM

All dates are subject to change. Please visit: www.sfport.com
for updates

Network