

Waterfront Land Use Plan Update

Subcommittee Check-In Meeting

Part 2 Working Group Policy Discussions

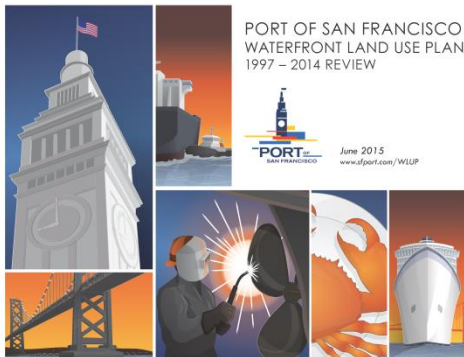
February 22, 2017



Photography by Tim Griffith

Phases of Waterfront Plan Update

- Part 1 Orientation
- **Part 2 Policy Discussions**
- Part 3 Subarea Planning
- Part 4 Staff Draft Plan Amendments



Work Flow for Part 2 Policy Discussions

November to May

May - June

SUB-COMMITTEES POLICY DISCUSSION

RESILIENCE

- Climate change
- Environmental quality
- Adaptation and resilience
- Emergency preparedness and recovery
- Historic preservation and design

LAND USE

- Maritime and water access needs
- Open space activation
- Historic resources and rehabilitation
- Leasing and development
- Public review process

TRANSPORTATION

- Water transportation
- Goods movement and parking
- Land transit/transportation
- Pedestrian and bicycle
- Mobility and access

Working Group
Meeting
Check In

RESILIENCE
Recommendations,
policy guidance

LAND USE
Recommendations,
policy guidance

TRANSPORTATION
Recommendations,
policy guidance

WORKING
GROUP

Review and
integrate Part 2
recommendations

Goals

- Balance maritime & public access
- More diverse open space uses
- Support historic rehabilitation
- Leasing & development strategies
- Public process improvements

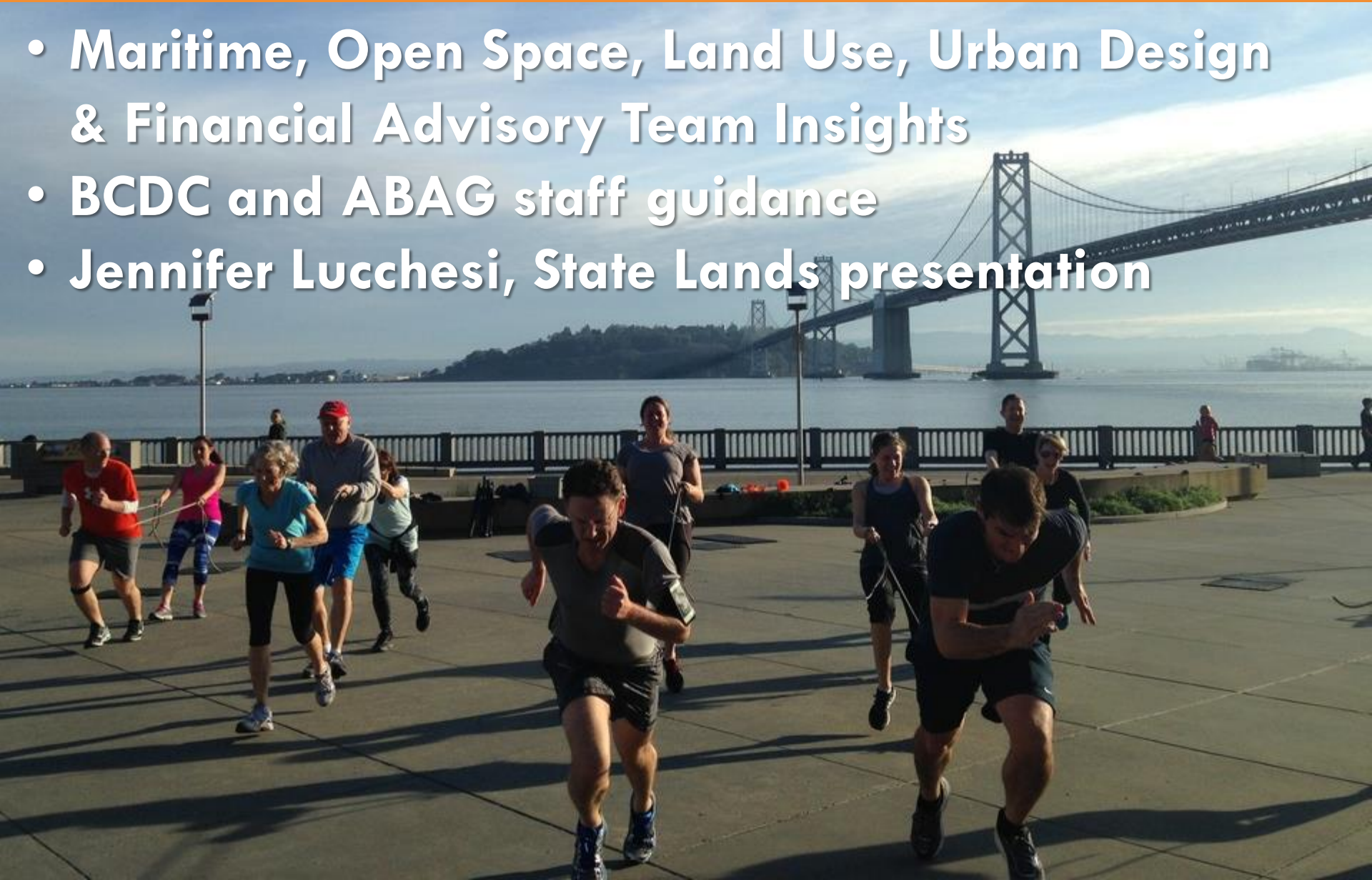
Members

Alice Rogers (chair)
Kirk Bennett
Jane Connors/
Stewart Morton
Jon Golinger
Ellen Johnck
Ken Kelton
Ron Miguel
Karen Pierce
Jasper Rubin
Corinne Woods
DeeDee Workman

Meeting Highlights

Land Use Subcommittee

- Maritime, Open Space, Land Use, Urban Design & Financial Advisory Team Insights
- BCDC and ABAG staff guidance
- Jennifer Lucchesi, State Lands presentation



Accomplishments to date:

- **Endorse Pier 80-96 Maritime Eco-Industrial Strategy** (November 2016)
- **Water recreation recommendations** (January 2017)
- **Berthing & public access recommendations** (February 2017)
- **Endorse Blue Greenway** (February 2017)
- **Draft open space activation recommendations** (to be considered March 2017)

Next Steps

Land Use Subcommittee

- Economic feasibility modeling
- Pier leasing & development: needs & options
- Seawall lot leasing & development
- Pre-development public process improvements



Topics

Meeting 1

- Goods Movement
- Water Transit

Meeting 2

- Land Transit
- Pedestrian & Bicycle Access

Meeting 3

- Transportation Demand Management
- Parking

Working Group Roster

Linda Fadeke Richardson (chair)
Troy Campbell
Kevin Carroll
Jeffrey Congdon
Chris Christensen
Carolyn Horgan
Tom Radulovich
Cristina Rubke
Anne Turner

Considerations incorporated into each discussion

- Accessibility/Mobility
- Public realm and urban design
- Financial needs, infrastructure, and capital improvements considerations

Questions Considered

Transportation Subcommittee

Meeting 1- Water Transportation & Goods Movement

Water Transportation: How can the Port enhance or expand facilities to support water transit for ferries, water taxi's or chartered commuter excursion?

Goods Movement: The Port should protect and enhance access to support land side goods movement including truck access, freight rail access and adequate loading areas.



Meeting 2- Land Transportation, Pedestrian and Bicycle Access

Land Transit/Transportation: *The Port should work with SFMTA to improve transit service and vehicular access along, to and from the waterfront for all.*

Pedestrian and Bicycle Access: *The Port should work and coordinate with SFMTA to improve pedestrian and bicycle access and safety and to provide complete streets along the waterfront, while enhancing the public realm.*

Meeting 3 – Transportation Demand Management & Parking

What parking policies should the Port consider for Port streets, piers and upland properties to align with the City's Transportation Demand Management (TDM) policies and to promote universal access and visitor access; should the Port consider establishment of TDM?

Next Steps

Transportation Subcommittee

- *Staff Prepare Draft Policy Guidance based upon meetings 1-3 discussions and feedback for Sub-Committee to consider*
- *Sub-Committee reconvene to review & comment on Draft Guidance and address inconsistencies (if any)*
- *Staff finalize Policy Guidance Recommendations for Working Group to consider*



Goals

Develop new Waterfront Plan goals and policies for Environmental Sustainability and Resilience.

Working Group Roster

Pia Hinckle (chair)
Grant Ballard
Mike Buhler/Aaron Hyland
Earl James
Peter Summerville
John Tobias
Dilip Trivedi

Accomplishments to Date

Meeting #1: Environmental Sustainability Background and Context
Meeting #2: Emergency Preparedness, Disaster Recovery, Collaborations
Meeting #3: Discussion of Environmental Sustainability Policy Ideas

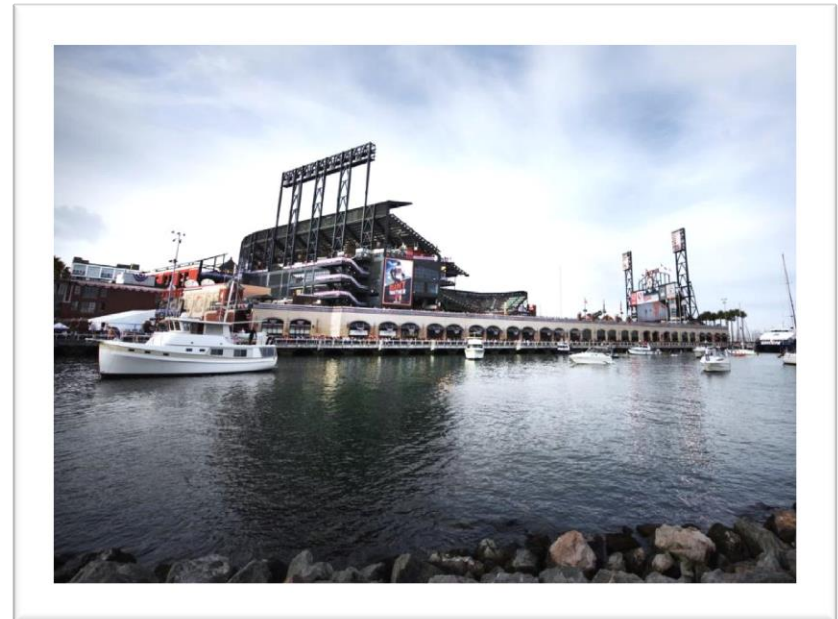
Environmental Sustainability: Existing Policy Context and New Policy Ideas

- Through existing regulations and policies, the Port currently incorporates many progressive environmental sustainability measures.
- Topics discussed and focus for new policy ideas:
 1. Climate Change and Air Quality
 2. Water Quality and Conservation
 3. Natural Resources
 4. Green Building, Leasing & Development
- Consistent themes through all topics:
 1. Bench-marking to track progress
 2. Public involvement & education
 3. Partnering & impact on Port tenants
 4. Some ideas require integration with Land Use/Transportation

Emergency Preparedness & Disaster Recovery: Existing Policy Context and New Policy Topics

- Open space, industrial, and “underutilized” Port lands serve essential resilience functions and need to remain flexible.
 - Overlap/integrate with Land Use
- Port’s preparedness, response, and recovery from disaster rely on existing and ongoing collaborations with City, regional, and federal agencies.
- Topics discussed and focus for new policy ideas include:
 1. Collaborations for Resilience Planning
 2. Water – Dependent Disaster Recovery Operations
 - Overlap/integrate with Land Use

- Discussion of additional Resilience Topics will be informed by **Designing for Resilience Workshop – March 1**
 - Sea level rise adaptation
 - Protecting historic resources
 - Stabilizing the seawall and other Port shorelines
- Port staff will bring resilience policy ideas back to:
 - Meeting #4 - **March 29**
 - Meeting #5 - **April 19**



Upcoming Part 2 Meetings

Wednesday evenings at Pier 1, 6-8pm

March 1: Resilience Workshop

March 15 & 22: Land Use

March 29: Resilience

April 5: Transportation

April 12: Land Use

April 19: Resilience

April 26: Transportation

May 3 or 10 (tbd): Land Use

May/June: Working Group

Part 2 Recommendations





Port of San Francisco

FY 2017 Legislative, Funding Strategies

INTRODUCTION: Funding & Legislative Strategies

The background of the slide features a photograph of the Michigan State Capitol building. The central focus is the large, dark blue dome with gold trim. To the right, a bronze statue of a seated figure is visible. The sky is a clear, bright blue.

THE CHALLENGE

\$500 million to address seawall life safety needs

\$2-5 billion for sea level rise adaptation

FY17-26 10YCP \$900 million deferred maintenance

SOLUTIONS

Maximize Use of Port and External Funding Sources

Legislative Strategies

INTRODUCTION: CCSF State and Fed. Leg. Process

- Mayor's Office of Gov. and Leg. Affairs
- City's State and Fed. Leg. Committee
- Contract State and Federal Lobbyists
- Legislation advocacy organizations
- Port staff in Sacramento and Washington, DC



INTRODUCTION: Capital Investment Guiding Documents

- **10 Year Capital Plan** – Investment need & planned sources
- **2 Year Capital Budget** – Immediate spend plan
- **NEW 5 Year Capital Improvement Plan**
 - Identify the Port's total work plan
 - Align available funding to highest/best use
 - Identify potential external funding sources
 - Target grant and legislative solution opportunities



PORT CAPITAL PROGRAM



CAPITAL PROGRAM: Funding Strategies



- Capital Improvement Plan → Maximize \$\$ Potential
 - Invest in needs that cost more over time
 - Efficiencies by packaging repair types, e.g. “roofs”
 - Shift responsibility to other City entities
 - Seek untapped sources, e.g. transportation grants
 - Prepare to receive funds by investing in initial design & permitting for projects

CAPITAL PROGRAM: Federal Strategies



- **Pier 70, W6,7,8** – \$5.7M 2008 WRDA, USACE
- **Mission Bay Ferry Landing** – TIGER (DOT)
- **S. Waterfront Eco-Industrial Park** – FAST LANE (DOT)
- **Central Basin** – Expedited review, USACE

CAPITAL PROGRAM: State Strategies

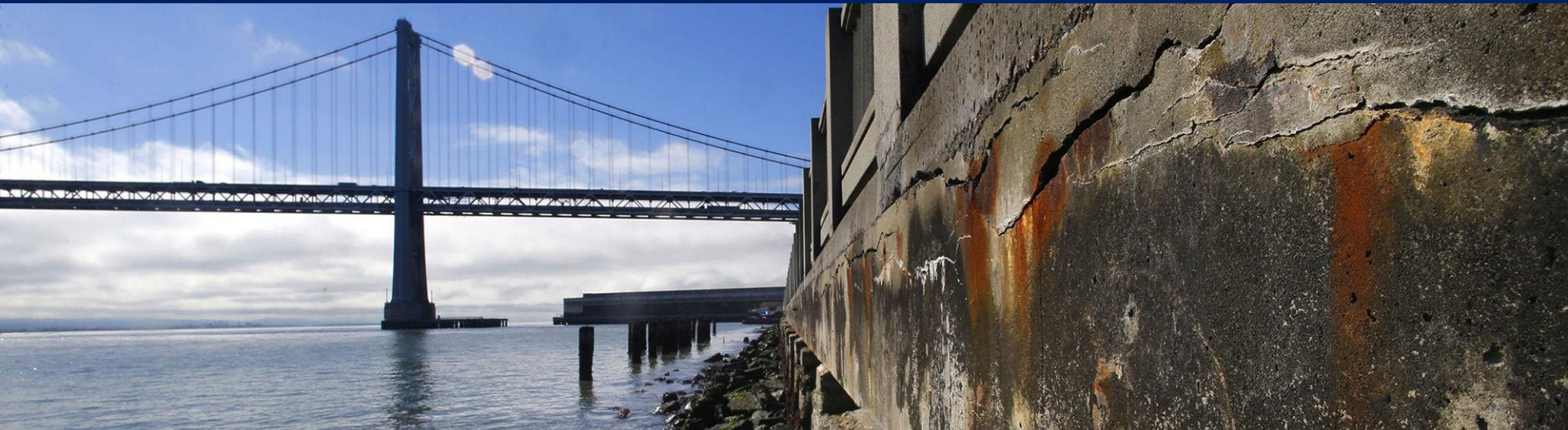


- **Mission Bay Ferry Landing**
 - Regional Measure 3, CA 2018 election
 - Metropolitan Trans. Commission
 - Cap & Trade
 - CA Air Resources Board
- **AB 2659**
 - Affordable housing technical amendments

SEAWALL RESILIENCY PROJECT



SEAWALL: Funding Effort Organization



- Living Cities-City Accelerator Program
- Seawall Finance Working Group
 - City expertise in capital planning, finance, policy, transportation, risk management, etc.
 - Representation from the Mayor, BOS, City Administrator and Controller's Offices
 - Final recommendations to Capital Planning Committee
 - **45+** funding concepts under review

SEAWALL: Federal Legislative Strategies

USACE GI funding process

- Study Authorization (WRDA)
- Study Appropriations (new start)
- Construction Authorization (WRDA)
- Construction Appropriations (new start)



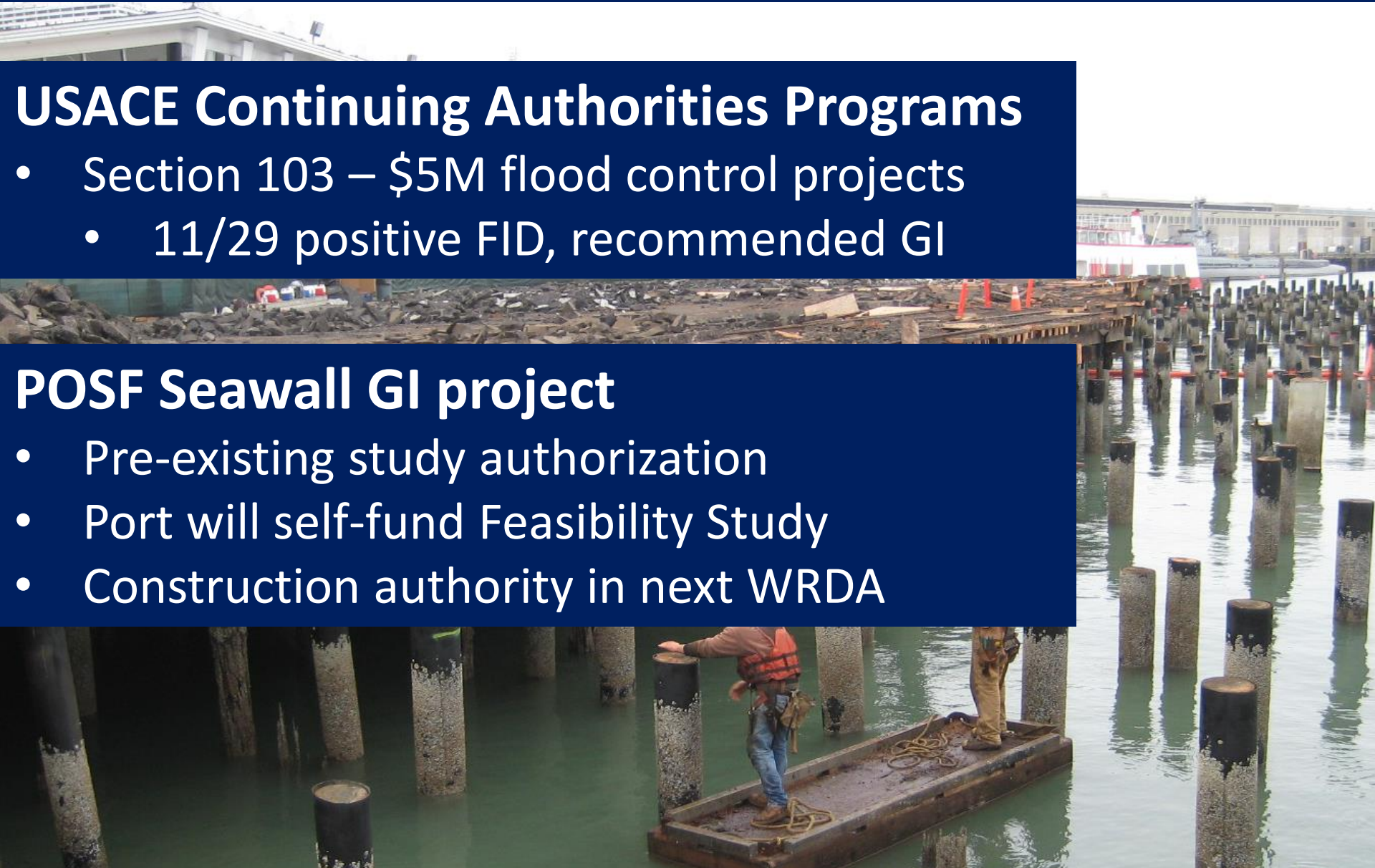
SEAWALL: Federal Legislative Strategies

USACE Continuing Authorities Programs

- Section 103 – \$5M flood control projects
 - 11/29 positive FID, recommended GI

POSF Seawall GI project

- Pre-existing study authorization
- Port will self-fund Feasibility Study
- Construction authority in next WRDA



SEAWALL: State & Local Legislative Strategies

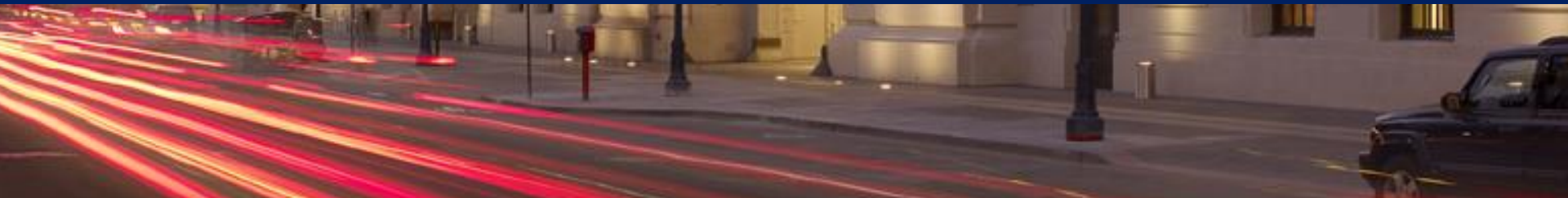


- **State Share, Tax Increment:** statewide, district, hybrid bill
- **Statewide Bonds:** resource bonds, or pursue statewide resiliency bond
- **\$350M 2018 General Obligation Bond**

CONCLUSION



The Port is taking a highly organized and structured approach to addressing the Seawall and other Port Capital needs



Questions?