



► Encourage neighborhood vitality, character, and diversity with more mixed-income housing



DRAFT GOALS  
SOUTHERN WATERFRONT

**COMMUNITY AND  
SOCIAL EQUITY**



► Adapt buildings, open spaces, and services for flooding that ensure safety and preparedness of the district and city in the case of a flood emergency



DRAFT GOALS  
SOUTHERN WATERFRONT

**COMMUNITY AND  
SOCIAL EQUITY**



► Develop equitable solutions with and for a wide variety of community members, including youth, seniors, families and people of color



DRAFT GOALS  
SOUTHERN WATERFRONT

**COMMUNITY AND  
SOCIAL EQUITY**



DRAFT GOALS  
SOUTHERN WATERFRONT

**COMMUNITY AND  
SOCIAL EQUITY**



## COMMUNITY AND SOCIAL EQUITY

### HOW COULD WE REFINE THIS GOAL'S LANGUAGE?



Planning



## COMMUNITY AND SOCIAL EQUITY

### HOW COULD WE REFINE THIS GOAL'S LANGUAGE?



Planning



WATERFRONT RESILIENCE



## COMMUNITY AND SOCIAL EQUITY

### HOW COULD WE REFINE THIS GOAL'S LANGUAGE?



Planning



WATERFRONT RESILIENCE



## COMMUNITY AND SOCIAL EQUITY

### HOW COULD WE REFINE THIS GOAL'S LANGUAGE?



Planning



WATERFRONT RESILIENCE

**A SOCIALLY AND ENVIRONMENTALLY RESILIENT NEIGHBORHOOD**



DRAFT GOALS  
SOUTHERN WATERFRONT

**COMMUNITY AND SOCIAL EQUITY**



DRAFT GOALS  
SOUTHERN WATERFRONT

**COMMUNITY AND SOCIAL EQUITY**



---

---

---

---

---

---

---



DRAFT GOALS  
SOUTHERN WATERFRONT

**COMMUNITY AND SOCIAL EQUITY**



---

---

---

---

---

---

---



DRAFT GOALS  
SOUTHERN WATERFRONT

**COMMUNITY AND SOCIAL EQUITY**



Planning



WATERFRONT  
RESILIENCE



Planning



WATERFRONT  
RESILIENCE



Planning



WATERFRONT  
RESILIENCE



Planning



WATERFRONT  
RESILIENCE



- ▶ Build a long-lasting basis of support with a transparent, authentic engagement process



DRAFT GOALS  
SOUTHERN  
WATERFRONT

**GOVERNANCE**



- ▶ Engage with youth to build long-term understanding, capacity, and stewardship



DRAFT GOALS  
SOUTHERN  
WATERFRONT

**GOVERNANCE**



- ▶ Acknowledge the significance of the newly designated African American Cultural District at Bayview Hunters Point, and other cultural groups, as central to developing future visions



DRAFT GOALS  
SOUTHERN  
WATERFRONT

**GOVERNANCE**



- ▶ Identify and share individual histories and stories about Islais Creek to inform the Strategy



DRAFT GOALS  
SOUTHERN  
WATERFRONT

**GOVERNANCE**



# GOVERNANCE

HOW COULD WE REFINE THIS GOAL'S LANGUAGE?

Large empty white box for writing.



San Francisco Planning



SFMTA



US Army Corps of Engineers

WATERFRONT RESILIENCE



# GOVERNANCE

HOW COULD WE REFINE THIS GOAL'S LANGUAGE?

Large empty white box for writing.



San Francisco Planning



SFMTA



US Army Corps of Engineers

WATERFRONT RESILIENCE



# GOVERNANCE

HOW COULD WE REFINE THIS GOAL'S LANGUAGE?

Large empty white box for writing.



San Francisco Planning



SFMTA



US Army Corps of Engineers

WATERFRONT RESILIENCE



# GOVERNANCE

HOW COULD WE REFINE THIS GOAL'S LANGUAGE?

Large empty white box for writing.



San Francisco Planning



SFMTA



US Army Corps of Engineers

WATERFRONT RESILIENCE

**AUTHENTIC AND  
TRANSPARENT PUBLIC  
ENGAGEMENT DURING  
AND BEYOND THE  
PLANNING PHASE**



DRAFT GOALS  
SOUTHERN  
WATERFRONT

**GOVERNANCE**



DRAFT GOALS  
SOUTHERN  
WATERFRONT

**GOVERNANCE**

---

---

---

---

---

---

---

---



DRAFT GOALS  
SOUTHERN  
WATERFRONT

**GOVERNANCE**



DRAFT GOALS  
SOUTHERN  
WATERFRONT

**GOVERNANCE**



San Francisco  
Planning



WATERFRONT  
RESILIENCE



San Francisco  
Planning



WATERFRONT  
RESILIENCE



San Francisco  
Planning



WATERFRONT  
RESILIENCE

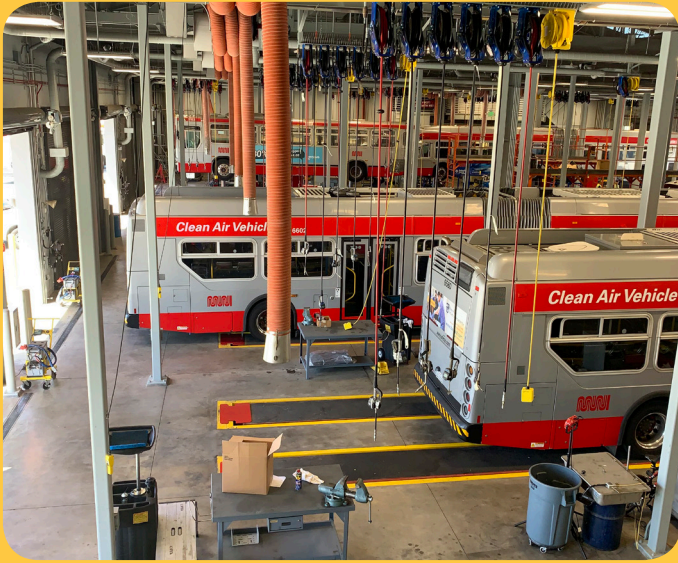


San Francisco  
Planning



WATERFRONT  
RESILIENCE





- ▶ *Adapt key transportation facilities to flooding to maintain operations, service and connectivity*



DRAFT GOALS  
SOUTHERN  
WATERFRONT

**TRANSPORTATION**



- ▶ *Improve connectivity between Bayview and other neighborhoods*



DRAFT GOALS  
SOUTHERN  
WATERFRONT

**TRANSPORTATION**



- ▶ *Improve pedestrian and bike connections to provide resilience during near term periodic flood events.*



DRAFT GOALS  
SOUTHERN  
WATERFRONT

**TRANSPORTATION**



- ▶ *Create accessible transportation between the waterfront, the City and the region*



DRAFT GOALS  
SOUTHERN  
WATERFRONT

**TRANSPORTATION**



## TRANSPORTATION

HOW COULD WE REFINE THIS GOAL'S LANGUAGE?

Large empty white box for writing.



San Francisco Planning



SFMTA



US Army Corps of Engineers

WATERFRONT RESILIENCE



## TRANSPORTATION

HOW COULD WE REFINE THIS GOAL'S LANGUAGE?

Large empty white box for writing.



San Francisco Planning



SFMTA



US Army Corps of Engineers

WATERFRONT RESILIENCE



## TRANSPORTATION

HOW COULD WE REFINE THIS GOAL'S LANGUAGE?

Large empty white box for writing.



San Francisco Planning



SFMTA



US Army Corps of Engineers

WATERFRONT RESILIENCE



## TRANSPORTATION

HOW COULD WE REFINE THIS GOAL'S LANGUAGE?

Large empty white box for writing.



San Francisco Planning



SFMTA



US Army Corps of Engineers

WATERFRONT RESILIENCE

**A TRANSPORTATION  
SYSTEM THAT IS  
RESILIENT AND  
ADAPTABLE TO  
FLOOD RISK**



DRAFT GOALS  
SOUTHERN  
WATERFRONT

**TRANSPORTATION**

Blank white space for notes.

---

---

---

---

---

---

---



DRAFT GOALS  
SOUTHERN  
WATERFRONT

**TRANSPORTATION**

Blank white space for notes.

---

---

---

---

---

---

---



DRAFT GOALS  
SOUTHERN  
WATERFRONT

**TRANSPORTATION**

Blank white space for notes.

---

---

---

---

---

---

---



DRAFT GOALS  
SOUTHERN  
WATERFRONT

**TRANSPORTATION**



San Francisco  
Planning



WATERFRONT  
RESILIENCE



San Francisco  
Planning



WATERFRONT  
RESILIENCE



San Francisco  
Planning



WATERFRONT  
RESILIENCE



San Francisco  
Planning



WATERFRONT  
RESILIENCE



► *Identify solutions and strategies that benefit the entire Islais Creek watershed*



DRAFT GOALS  
SOUTHERN  
WATERFRONT

**ENVIRONMENT**



► *Prioritize nature-based solutions and green infrastructure to mitigate floods, improve stormwater management and support local ecology*



DRAFT GOALS  
SOUTHERN  
WATERFRONT

**ENVIRONMENT**



► *Improve access to and create new resilient open spaces along the creek and bay shorelines to provide much needed recreational space for the surrounding neighborhoods*



DRAFT GOALS  
SOUTHERN  
WATERFRONT

**ENVIRONMENT**



---

---

---

---

---

---



DRAFT GOALS  
SOUTHERN  
WATERFRONT

**ENVIRONMENT**



# ENVIRONMENT

HOW COULD WE REFINE THIS GOAL'S LANGUAGE?

Large empty white rectangular area for writing or drawing.



Planning



SFMTA



WATERFRONT RESILIENCE



# ENVIRONMENT

HOW COULD WE REFINE THIS GOAL'S LANGUAGE?

Large empty white rectangular area for writing or drawing.



Planning



SFMTA



WATERFRONT RESILIENCE



# ENVIRONMENT

HOW COULD WE REFINE THIS GOAL'S LANGUAGE?

Large empty white rectangular area for writing or drawing.



Planning



SFMTA



WATERFRONT RESILIENCE



# ENVIRONMENT

HOW COULD WE REFINE THIS GOAL'S LANGUAGE?

Large empty white rectangular area for writing or drawing.



Planning



SFMTA



WATERFRONT RESILIENCE

**A HEALTHY  
ENVIRONMENT FOR  
RESIDENTS, WORKERS  
AND ECOLOGIES**



DRAFT GOALS  
SOUTHERN  
WATERFRONT

**ENVIRONMENT**



DRAFT GOALS  
SOUTHERN  
WATERFRONT

**ENVIRONMENT**



---

---

---

---

---

---

---



DRAFT GOALS  
SOUTHERN  
WATERFRONT

**ENVIRONMENT**



DRAFT GOALS  
SOUTHERN  
WATERFRONT

**ENVIRONMENT**



---

---

---

---

---

---

---



DRAFT GOALS  
SOUTHERN  
WATERFRONT

**ENVIRONMENT**



Planning



WATERFRONT  
RESILIENCE



Planning



WATERFRONT  
RESILIENCE



Planning



WATERFRONT  
RESILIENCE



Planning



WATERFRONT  
RESILIENCE





- ▶ *Adapt flood-prone areas that currently support existing jobs, small businesses and local artists*



DRAFT GOALS  
SOUTHERN  
WATERFRONT

**ECONOMY**



- ▶ *Support local, blue collar industrial jobs*



DRAFT GOALS  
SOUTHERN  
WATERFRONT

**ECONOMY**



- ▶ *Use the planning process of this project as an opportunity to train and mentor individuals in the fields of design, planning and engineering*



DRAFT GOALS  
SOUTHERN  
WATERFRONT

**ECONOMY**



- ▶ *Maintain and increase of women- and minority-owned businesses, community benefit organizations, worship centers, and arts and culture organizations*



DRAFT GOALS  
SOUTHERN  
WATERFRONT

**ECONOMY**



# ECONOMY

HOW COULD WE REFINE THIS GOAL'S LANGUAGE?

Large empty white box for writing.



San Francisco Planning



SFMTA



U.S. Army Corps of Engineers

WATERFRONT RESILIENCE



# ECONOMY

HOW COULD WE REFINE THIS GOAL'S LANGUAGE?

Large empty white box for writing.



San Francisco Planning



SFMTA



U.S. Army Corps of Engineers

WATERFRONT RESILIENCE



# ECONOMY

HOW COULD WE REFINE THIS GOAL'S LANGUAGE?

Large empty white box for writing.



San Francisco Planning



SFMTA



U.S. Army Corps of Engineers

WATERFRONT RESILIENCE



# ECONOMY

HOW COULD WE REFINE THIS GOAL'S LANGUAGE?

Large empty white box for writing.



San Francisco Planning



SFMTA



U.S. Army Corps of Engineers

WATERFRONT RESILIENCE

**A SUSTAINABLE  
ECONOMY THAT BENEFITS  
LOCAL RESIDENTS,  
WORKERS, AND  
INDUSTRIES**



DRAFT GOALS  
SOUTHERN  
WATERFRONT

**ECONOMY**

Blank white space for notes or additional information.



DRAFT GOALS  
SOUTHERN  
WATERFRONT

**ECONOMY**

Five horizontal white lines for notes or additional information.

Blank white space for notes or additional information.



DRAFT GOALS  
SOUTHERN  
WATERFRONT

**ECONOMY**

Blank white space for notes or additional information.



DRAFT GOALS  
SOUTHERN  
WATERFRONT

**ECONOMY**

Five horizontal white lines for notes or additional information.



San Francisco  
**Planning**



WATERFRONT  
RESILIENCE



San Francisco  
**Planning**



WATERFRONT  
RESILIENCE



San Francisco  
**Planning**



WATERFRONT  
RESILIENCE



San Francisco  
**Planning**



WATERFRONT  
RESILIENCE