



### You're invited to Seawall Community Meeting #3!

Join the Port of San Francisco at the third in a series of Seawall Community Meetings to learn more about the Embarcadero Seawall, explore seismic and flooding scenarios, and weigh-in on the Program goals for short and long-term waterfront resilience. The meeting will include an interactive mapping exercise, allowing us to dive deeper into the Seawall program framework and understand the unavoidable tradeoffs ahead. **Refreshments served!**

#### Event Details

5:30 PM – 7 PM

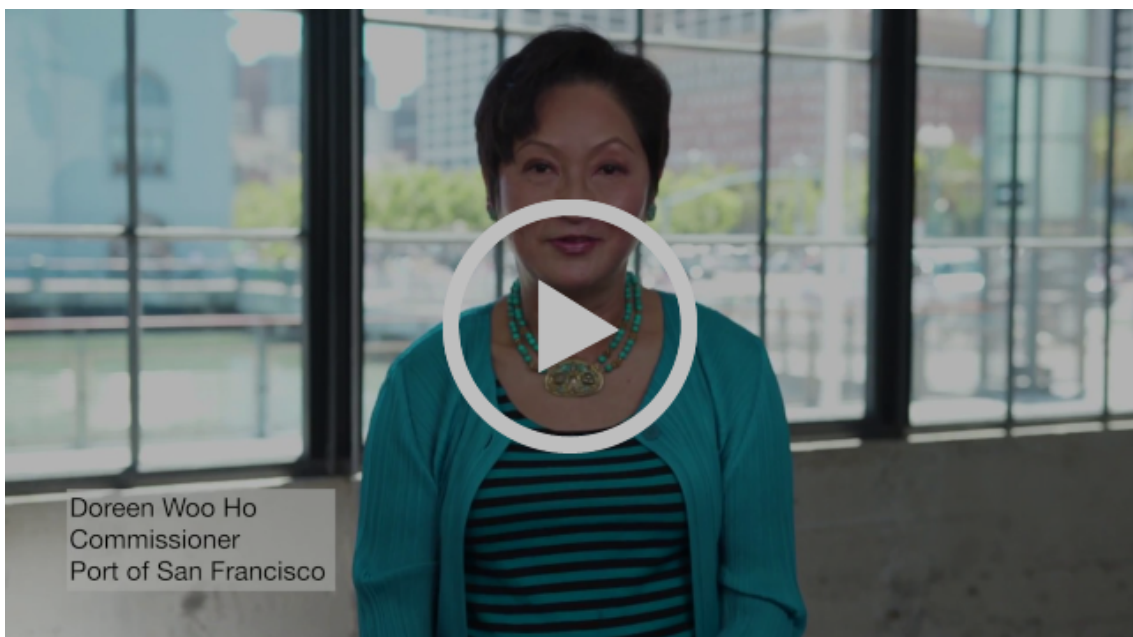
The SPUR Urban Center

654 Mission Street, San Francisco

RSVP for the Seawall Community Meeting



### Doreen Woo Ho, Port of San Francisco Commissioner, shares the Port's values: transparency, fiscal responsibility, and accountability



### The Seawall in the news

Stormy weather gave us a scary glimpse into the future as high tides and strong

winds caused flooding over the Seawall along the Embarcadero. Read more in the [Examiner](#) or watch [KTVU](#).

Thank you Duboce Triangle Neighborhood Association for featuring the Seawall in your [newsletter](#)!



### More walking tours for 2019!

The Seawall walking tours are back by popular demand! Join the Port for a free 45-minute walking tour to learn about the seismic and flood threats facing our Seawall and what we're doing to keep the waterfront safe for generations to come.

[Register now for a 2019 tour.](#)

### Sea level rise projects around the Port: Fire Station 35

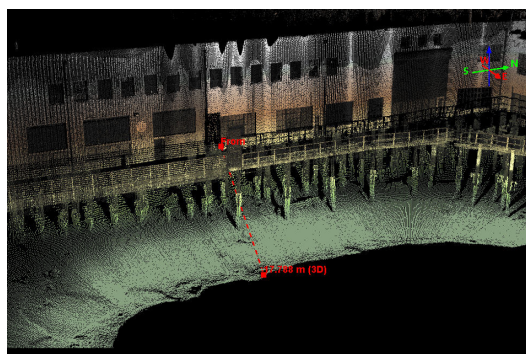
In recognition of the Port's critical role in creating a sustainable waterfront, the Port Commission requires that every project consider current and future flooding. This includes the new Fireboat Station No.35 at Pier 22½. This Public Works project will be the first floating building on the waterfront. Fireboat Station No.35 currently houses the SFFD's three active fireboats and is critical for the city's disaster response and recovery efforts.



### A laser focus on the Seawall

The Seawall is mostly below water, which means the Port must use special tools to accurately analyze what's most vulnerable.

Last year, the Seawall team used a combination of underwater sonar and laser scanners to map the nearshore area. These measurements will inform the program's ongoing seismic and flood analyses.




### From the archives: creating a more accessible waterfront

It's hard to imagine today, but views of the waterfront were once obstructed by a freeway (left). On October 17, 1989, the Loma Prieta earthquake struck, causing \$6 billion in damages, including severe damage to the Embarcadero Freeway. (Thankfully, with an epicenter 60 miles away, shaking was too moderate to trigger widespread liquefaction of the Embarcadero Seawall.)

The earthquake's destruction allowed San Francisco to start anew and create a more beautiful and accessible waterfront. Demolition of the freeway began in 1991 (right) and opened a new chapter for the city and the Embarcadero.



 Forward this newsletter to your friends and colleagues!

*Copyright © 2019 Port of San Francisco, All rights reserved.*

Want to change how you receive these emails?  
You can update your preferences or unsubscribe from this list.



## It's Your Turn: Help Us Map the Waterfront's Assets

We want to hear from you! In three simple steps, inform how we prioritize and define projects along the Embarcadero Seawall.

1. [View a map of the San Francisco waterfront reflecting the Embarcadero Seawall.](#)
2. We've placed life safety and disaster response pins on the map already - these sites are vital for our city's disaster response and recovery.
3. **Now it's your turn. Share up to three important assets along the waterfront using the pins, and let us know why you prioritized each.**

Thanks for participating!

Map Your Priorities Along the Seawall!

---

### U.S Army Corps of Engineers Flood Study

The Port of San Francisco and the U.S. Army Corps of Engineers have partnered to conduct an expected 3-4 1/2 year study of flood risk and the possible strategies to reduce the risks to vital waterfront infrastructure and assets. The study area includes the entire Port of San Francisco jurisdiction from Aquatic Park to Heron's Head Park.

The local knowledge and insights of those who live, work, and recreate in the area are vital to the success of the study. Please join us at an upcoming meeting:

[Mission Bay Community Waterfront Resilience Meeting](#) on Thursday, March 7 from 5:30 - 7:00 PM at the UCSF Mission Bay Conference Center

[Islais Creek-Bayview Community Waterfront Resilience Meeting](#) on Thursday March 14, 5:30 - 7:00 PM at the Bayview Opera House

---

### City Administrator Naomi Kelly shares why the Embarcadero Seawall is "critically important for San Francisco to be resilient"



Naomi Kelly  
City Administrator  
San Francisco

---

Thank you for joining us at Seawall Community Meeting #3!

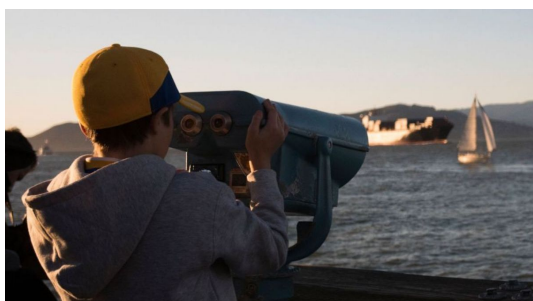
You made our third Seawall Community Meeting a success and filled the room at SPUR! Together, we dove into the Embarcadero Seawall Program Framework and phasing of the project. Thank you for sharing your priorities and discussing the potential tradeoffs with other stakeholders

Couldn't attend but want to weigh-in on the Seawall Program draft goals? [You can leave a comment on the Program website!](#) You can also view the [presentations](#) and [read](#) what attendees prioritized during the "Game of Hazards" mapping exercise.



## California Academy of Sciences Family Nights

The Seawall outreach team is excited to be back at the Cal Academy Family Nights. We'll be asking San Francisco public school students and their families how they envision the future waterfront. We can't wait to hear your ideas!



## 16th Annual International Ocean Film Festival

We are thrilled to partner with the Ocean Film Festival. These films, including a submission from the Port, will entertain, educate, and inspire. [The festival runs from March 7 through 10 - get your tickets!](#)

## The Seawall in the news

The San Francisco Business Times profiled the Embarcadero Seawall in their latest issue. To read the Business Times article and other coverage of the Seawall, visit our [media page](#).

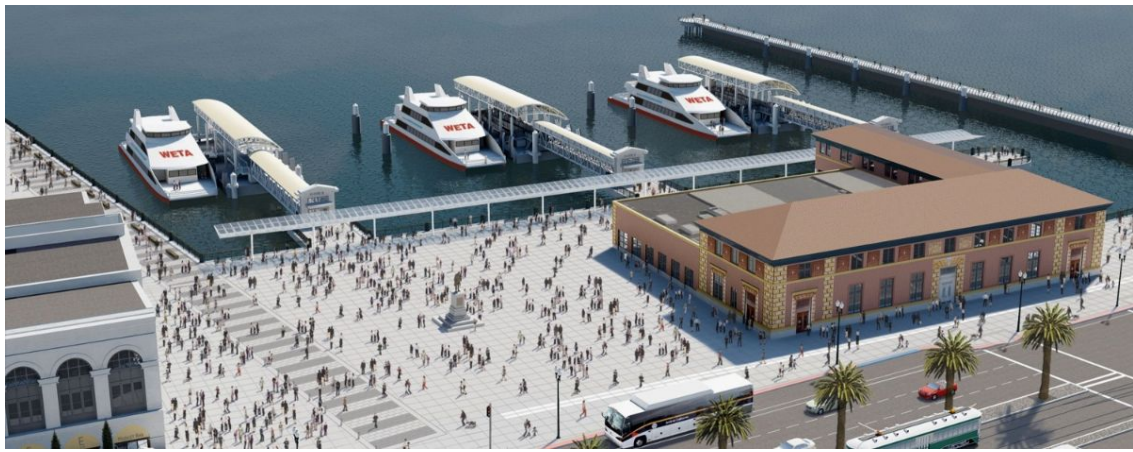


## Sea level rise projects around the Port: Downtown Ferry Terminal Expansion Project


Ferry ridership is skyrocketing in the Bay Area! The Downtown San Francisco Ferry Terminal already welcomes more than 10,000 passengers daily and is expanding in response to new ferry routes and increased demands.

In addition to accommodating anticipated increases in ferry ridership, the new Downtown Ferry Terminal will enhance the waterfront public experience, support key emergency response capabilities, and better prepare the waterfront for both sea level rise and seismic activity. [Learn more about the expansion here.](#)

Please also see the [press release from the Office of the Mayor](#) on the unveiling of the new ferry gate and coverage from [the Chronicle](#), [the Examiner](#), and [Bay City News](#).



---

 Forward this newsletter to your friends and colleagues!

*Copyright © 2019 Port of San Francisco, All rights reserved.*

Want to change how you receive these emails?  
You can update your preferences or unsubscribe from this list.



## Women of the Waterfront

Every day at the Port of San Francisco, exceptional women work to shape our waterfront's future. As one of just ten women port directors in the country, Executive Director Elaine Forbes is at the helm. Her leadership supports maritime, recreational, environmental, and economic opportunities along our world-class waterfront. [Learn more about Executive Director Elaine Forbes and the women who lead at the Port.](#)



---

**Congratulations to the 2019 SPUR Good Government awardee, Diane Oshima! Her work has ensured robust public involvement at the Port.**

[Watch a video with Diane](#)



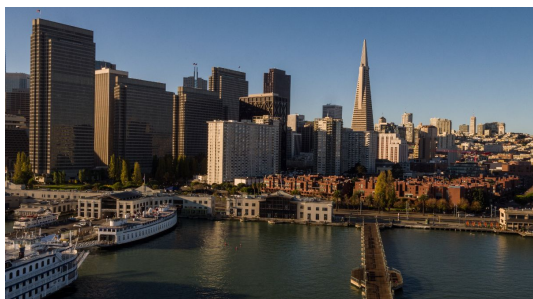
## Thank you for joining us at the Flood Study meetings!

Thank you to everyone who joined us for the first two Flood Study meetings. Together, we mapped our city's important assets along the shoreline and explored the flood scenarios. Local knowledge and the insights of those who live, work, and recreate in the area are vital to the success of the Study. We hope to see you this summer for the next two meetings! [Meeting materials, including the fact sheet, presentations, and meeting recap, are available online.](#)



## Family Nights

The California Academy of Sciences Family Nights are some of our favorite outreach events in the city. Over three nights, we connected with 1,000+ students and their families. Thank you for envisioning our future waterfront and sharing your creative ideas!



## Weigh-in on the Program goals

Help us direct priorities along our waterfront by providing feedback on the Seawall Program goals. Your insights are invaluable as we think both short- and long-term about the waterfront. [Read the goals and leave a comment online.](#)

## Sea level rise projects around the Port: Mission Rock/Seawall Lot 337

Mission Rock will be a new mixed-used neighborhood with eight acres of public open space, approximately 1,500 new rental homes with 40% affordable to low and middle income families, one million square feet of new office space, and 225,000 square feet of ground floor retail shops and cafes. The project is estimated to create 13,500 construction jobs and 7,000 permanent jobs, and generate over \$25 million annually in new revenue for shoreline protection and other City services.


The project will also include sea level rise resilience, provide a path toward the historic rehabilitation of Pier 48, and improve public waterfront access including constructing the northernmost section of the Blue Greenway Trail.

The San Francisco Giants and Tishman-Speyer are the lead developers and are working closely with the Port and the City. [Learn more about Mission Rock on the project page.](#)





---

 Forward this newsletter to your friends and colleagues!

*Copyright © 2019 Port of San Francisco, All rights reserved.*

Want to change how you receive these emails?  
You can update your preferences or unsubscribe from this list.



## Waterfront resilience and rising to the occasion

"As your stewards of 7.5 miles of waterfront, from Aquatic Park in the north to Heron's Head Park in the south, the Port of San Francisco acutely feels its responsibilities to preserve and strengthen our valued public space for today's enjoyment and for generations to come. That is why no effort along Port property moves forward without taking into account the eminent and increasing vulnerabilities of sea level rise and our city's undeniable seismic risks." -- Port of San Francisco Executive Director Elaine Forbes.



The anniversary of the 1906 Earthquake serves as an important reminder: we know the "Big One" is coming. This video is based on engineering studies of what may happen to our waterfront during a major earthquake and with rising sea levels.

## Introducing Brad Benson

We are excited to announce that Brad Benson has taken on the new position of Waterfront Resilience Director at the Port. Brad will be leading the Port's Waterfront Resilience Program, including the [Embarcadero Seawall Program](#) and the [U.S. Army Corps of Engineers / Port Flood Study](#). We are fortunate to have Brad's leadership and vision. Please join us in congratulating Brad on his new role!



## Future Seawall engineers!

At the California Academy of Sciences, 4th grade students are engineering the



Embarcadero Seawall. Nearly a third of all San Francisco students will partake in this amazing field trip. We look forward to having you join the team in the future!

---

### First bond sale

Mayor London Breed announced the first bond sale for \$50 million. These key funds will support the planning and preliminary design phases, including geotechnical investigations, risk assessment, and alternatives analysis.

[Read the full press release.](#)




---

### Thank you for joining us at the annual contracts event

Thank you for packing the house at the Port's annual contracts event. The Embarcadero Seawall Program is currently in the planning phase and will begin preliminary design in late 2020. We anticipate potential contracts in the fall of 2021 for final design and construction. Please reach out to Carlos Colón at [carlos.colon@sfport.com](mailto:carlos.colon@sfport.com) with additional questions.

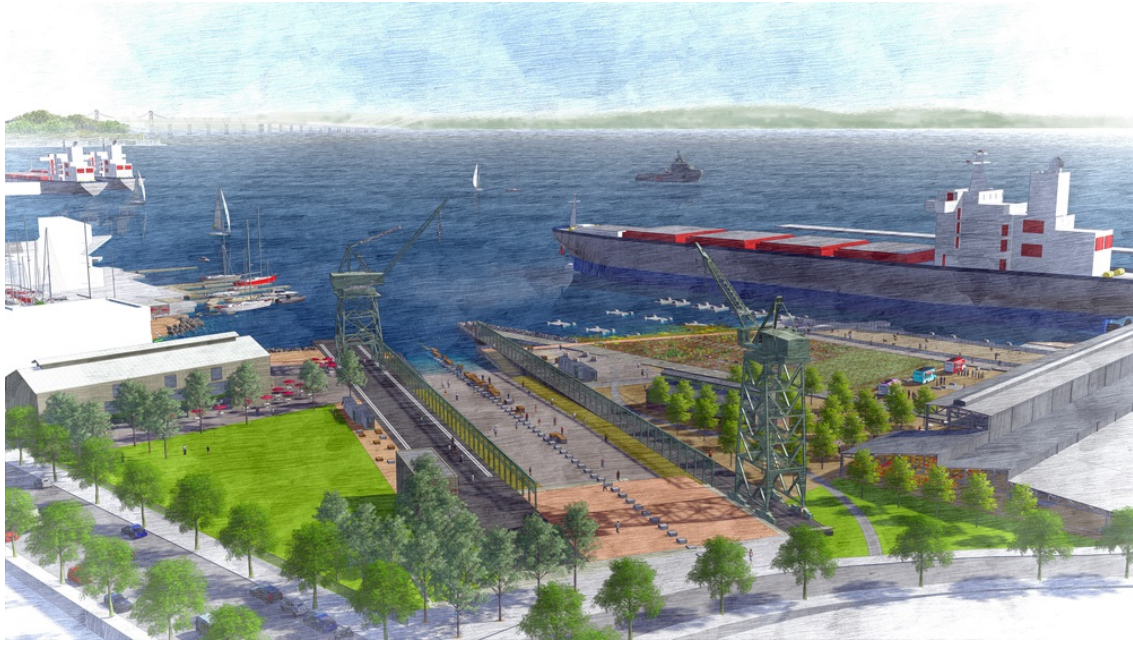



---


### Resilience projects around the Port: Crane Cove Park

Crane Cove Park is a new, approximately seven acre waterfront park located in the Central Waterfront between 19th and Mariposa Streets. The park will preserve historic maritime resources, provide public access and recreation opportunities to the Bay, and contribute to a vibrant new Pier 70 neighborhood.

The park is designed for 50 years of predicted sea level rise and safety in major earthquakes. It also expands the Port's [Blue Greenway](#). [Learn more about Crane Cove Park on the project page.](#)



---

 Forward this newsletter to your friends and colleagues!

*Copyright © 2019 Port of San Francisco, All rights reserved.*

Want to change how you receive these emails?  
You can update your preferences or unsubscribe from this list.



## You're invited to Seawall Community Meeting #4

Thank you for participating in the Seawall Community Meeting series and welcome aboard if this is your first meeting! At Meeting #4, we will explore specific geographic locations along the waterfront and apply our draft evaluation criteria. Learn more about the Embarcadero Seawall Program and the Port's Waterfront Resilience Program, and weigh-in on the evaluation criteria. We want to hear from you!

### Event Details

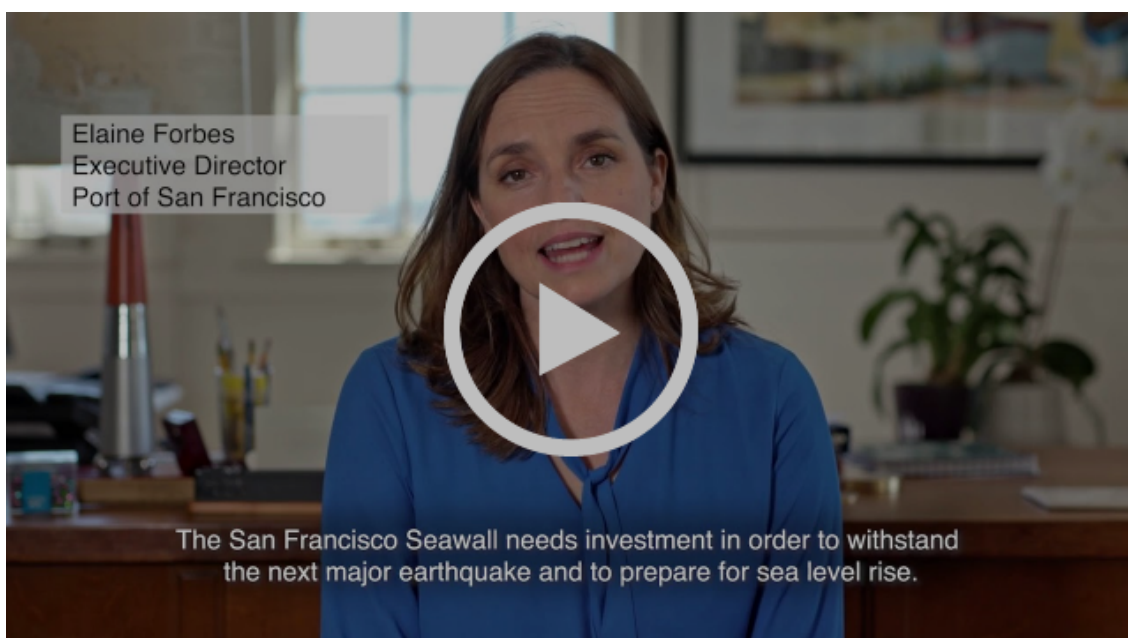
[Thursday, June 27](#)

[5:30 PM – 7 PM](#)

[The Port of San Francisco](#)

[Pier 1, The Embarcadero](#)

RSVP for the Seawall Community Meeting



Women of the Waterfront: Embarcadero Seawall Program

## Play "Game of Hazards" online

Sad to see Game of Thrones come to an end? Play Game of Hazards instead! We want your feedback on priorities along our waterfront. [It's simple: drop pins on the](#)

[map](#) to tell us your priorities and even enter to win a gift card!




---

### Upcoming bicycle tour

What better way to explore the southern waterfront than by bike? Join the [San Francisco Bicycle Coalition](#), [SPUR](#), [SF Parks Alliance](#), and the Port for a casually-paced, 4-mile, educational ride along the Blue Greenway. [RSVP here](#).



### Bayview/Dogpatch Sunday Streets

Thank you to everyone who stopped by our booth and helped us envision the waterfront for the year 2100 and beyond. We loved hearing your ideas for an accessible waterfront with parks, benches, and paths.

---

### Resilience projects around the Port: Fire Station No. 35

Fire Station 35 reached a significant milestone after the San Francisco Bay Conservation and Development Commission (BCDC) voted 16-0 to approve a major permit for the project. Construction is slated to begin in June for San Francisco's first-of-its-kind, floating fire station.

The new station will be built atop a steel float and anchored by guide piles, allowing it to rise and fall with the tides and projected Sea Level Rise. San Francisco Fire Department's three fireboats and rescue watercraft will be moored at the new floating facility.

Funding is provided by the Earthquake Safety and Emergency Response bond, which voters approved in June 2014. Learn more about this Public Works led project [here](#).





The Port of San Francisco's newly launched [Waterfront Resilience Program](#) ensures the City of San Francisco's bayside waterfront is protected from hazards including earthquakes, flooding, and sea level rise due to climate change. The Waterfront Resilience Program ensures the [Embarcadero Seawall Program](#), the [USACE/Port Flood Study](#), and other Port resilience and mitigation efforts and projects are aligned.

The Port's Waterfront Resilience Program acknowledges that we have many challenging conversations ahead of us about how to make sure the City of San Francisco is safe and that we're well-prepared for climate change at all scales. And we're tackling this problem like we do all problems - with innovation, ingenuity, and a commitment to equity, the ecology of the Bay and shoreline, and robust community engagement. [Click here to learn more!](#)

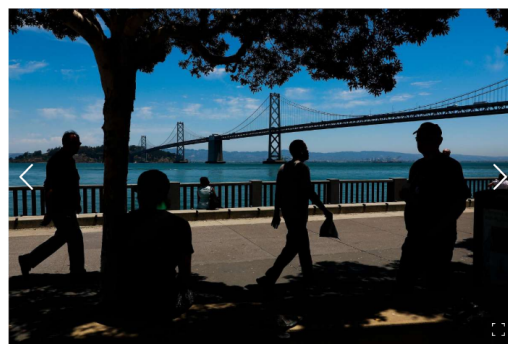


## The Waterfront Plan in the News

The *San Francisco Chronicle* shared the Port's new draft Waterfront Plan on Thursday, June 13. [Click here](#) to read the article which includes a selection of the Plan's exciting recommendations and comments from Port Executive Director Elaine Forbes. It's the first major update of the Waterfront Plan in 22 years and focuses on nine key goals. [Click here](#) to read the entire draft Waterfront Plan and provide feedback.

Plan unveiled for San Francisco's waterfront — includes Ferry Building 'piazza'

John King | June 12, 2019 | Updated June 12, 2019 10:20 a.m.



1 of 5  
The new waterfront plan proposes expanding activities on the Embarcadero by bringing in cafes or commercial spaces.  
Photo: Gabrielle Lurie / The Chronicle

## All aboard the waterfront boat tour!

The Port of San Francisco and the San Francisco Bay Area Water Emergency Transportation Authority (WETA) are excited to partner for a waterfront boat tour. Join us for a free 90-minute tour to enjoy the water and learn about projects along the waterfront including the Waterfront Plan, Historic Pier Rehabilitation Program, Embarcadero Seawall Program, Downtown Ferry Terminal Expansion Project, and the Mission Bay Ferry

Landing. More details to come but reserve your spot soon - tickets are expected to sell out!

**Event Details**

[Saturday, July 13](#)

[10:30 AM – noon](#)

[San Francisco Ferry Building, Gate F](#)

[1 Ferry Building](#)



RSVP for the Waterfront Boat Tour

---

**You're invited to Seawall Community Meeting #4**

Thank you for participating in the Seawall Community Meeting series and welcome aboard if this is your first meeting! At Meeting #4, we will explore specific geographic locations along the waterfront and apply our draft evaluation criteria. Learn more about the Embarcadero Seawall Program and the Port's Waterfront Resilience Program, and weigh-in on the evaluation criteria. We want to hear from you!

**Event Details**

[Thursday, June 27](#)

[5:30 PM – 7 PM](#)

[The Port of San Francisco](#)

[Pier 1, The Embarcadero](#)

RSVP for the Seawall Community Meeting



---

**See you at the Women's World Cup Viewing Parties**

The Embarcadero Seawall outreach team will be at [Sue Bierman Park](#) on the Embarcadero with [SF Rec & Park](#) for the free [2019 FIFA World Cup Viewing Parties](#). Come by our table to help us envision the waterfront for the



year 2100 and beyond! We'll have great swag and more information about the Embarcadero Seawall Program and the Waterfront Resilience Program. See you there!

- USA vs. Sweden on Thursday, June 20 at noon at Sue Bierman
- Semi-Finals on Tuesday, July 2 at noon at Sue Bierman
- Semi-Finals on Wednesday, July 3 at noon at Sue Bierman
- Final on Sunday, July 7 at 8 AM at Civic Center




### Upcoming Bicycle Tour!

What better way to explore the southern waterfront than by bike? Join the [San Francisco Bicycle Coalition](#), [SPUR](#), [SF Parks Alliance](#), and the Port for a casually-paced, 4-mile, educational ride along the Blue Greenway. [RSVP here.](#)



### The Port of San Francisco celebrates Pride Month

Happy Pride Month from the entire Waterfront Resilience Program team. The rainbow flag will be up all month at Pier 1 to celebrate and recognize the LGBTQI community! #LoveisLove

 Forward this newsletter to your friends and colleagues!

*Copyright © 2019 Port of San Francisco, All rights reserved.*

Want to change how you receive these emails?  
You can update your preferences or unsubscribe from this list.



Issue No. 16

## We need your feedback!

Help direct the Port's Waterfront Resilience Program by providing feedback on the Program Vision, Principles, and Evaluation Criteria. Your insights and feedback are invaluable as the Port thinks both short- and long-term about San Francisco's waterfront. What's missing from the draft vision statement? What do you think about the draft principles? How should the Port evaluate future projects? [Tell us in this short survey!](#)

### Waterfront Resilience Program Survey

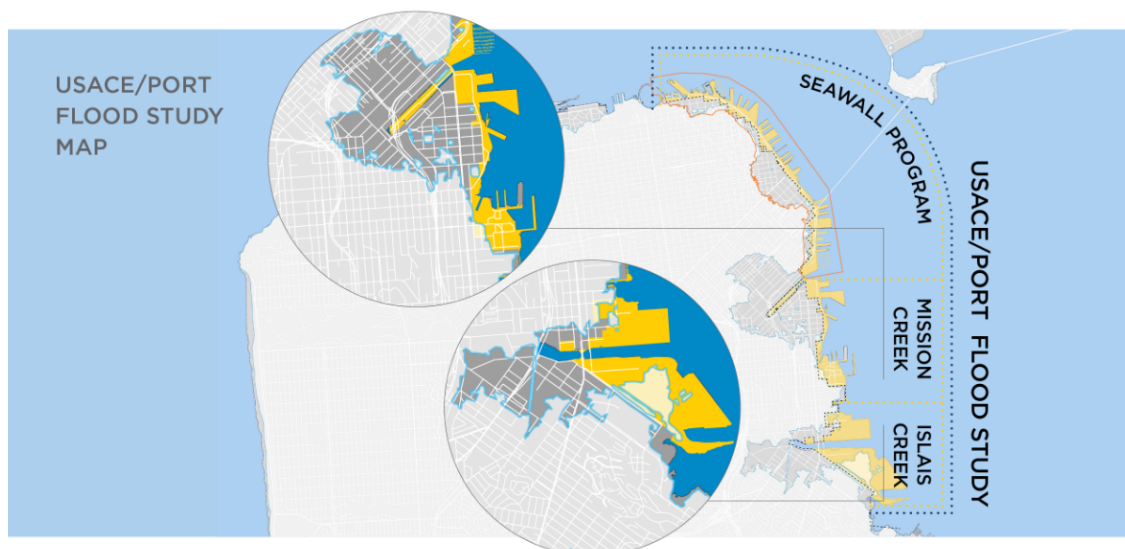
## Webinar on USACE/Port Flood Study

You are invited to a webinar on the U.S. Army Corps of Engineers/Port Flood Study to learn how the findings may impact your community and how to ensure that your voice is heard as planning progresses. The Flood Study will identify vulnerabilities and recommend strategies for federal investment to reduce flood risks and protect life safety as well as the assets, resources, and infrastructure that are most valued by those who live, work, and recreate in the neighborhood. The webinar gives you access to Port staff who can answer your questions about this exciting opportunity. [Register for the webinar today.](#)

### Webinar Details

[Thursday, July 18](#)

[2 PM – 3 PM](#)



## Community Meeting #4!

Thank you for attending Seawall Community Meeting #4! Your feedback on the criteria and what to prioritize is key moving forward. Couldn't attend? [Review the presentations](#), [read the event recap](#),



and [fill-out this short survey](#). We look forward to seeing you next time for a look at possible measures and the preliminary data from the Port's risk assessment.

### Weigh-in on historic piers

The Historic Pier Rehabilitation Program will create new public spaces in our historic piers. Past successes include the Exploratorium, Giant's Stadium, and Cruise Ship Terminal. What comes next? [Tell us by completing a 1-minute survey](#).




### The Port at SPUR

Join us at a lunchtime talk at [SPUR](#) in August to weigh-in on the Waterfront Plan and the work to address hazards and adapt to future risks along the waterfront. Panelists will also discuss the Waterfront Resilience Program, Embarcadero Seawall, and Historic Pier Rehabilitation.

### Port snags outreach award

The Port is thrilled to announce that the Embarcadero Seawall Program received an Award of Excellence from the American Association of Port Authorities for communications and community outreach! Thanks to each of you for being a part of this incredible outreach effort - we're inspired and excited for what's to come!



 Forward this newsletter to your friends and colleagues!



## Community Meeting: Islais Creek/Bayview Resilience

Join the Port, the U.S. Army Corps of Engineers, San Francisco Planning, and San Francisco Municipal Transportation Agency (SFMTA) at an upcoming community meeting to learn about the coordinated resilience projects in the Islais Creek/Bayview neighborhood and provide input to ensure efforts reflect the priorities of the community, and a shared vision for the future. [RSVP today!](#)

### Event Details

[Thursday, September 19](#)

[6 PM – 7:30 PM](#)

[Southeast Community Facility](#)

[1800 Oakdale Avenue](#)

RSVP for the Islais Creek/Bayview Community Meeting



### Community Outreach

The team is in the community hearing your ideas for our waterfront. Thanks to the **Boys & Girls Clubs of San Francisco, Tenderloin Clubhouse** for partnering with us at California Academy of Science's **Teen Night!** We'll see you this Saturday at the [BMAGIC Backpack Giveaway](#). Check out the [calendar](#) and invite us to your events!

**Ahoy and Thanks!**

Over 200 of you joined the Port and the San Francisco Bay Area Water Emergency Transportation Authority (WETA) to take in the beautiful views and learn more about resilience projects along our beautiful waterfront. Missed the tour? The Port is excited to host groups for Seawall Walking Tours. Please reach out through the [website](#).




---

## The Port in the News

Read about the Port and resilience projects in these top headlines from the month:

- [Researchers Set Out to Map San Francisco's Past](#) — *San Francisco Examiner*
- [Plan Unveiled for San Francisco's Waterfront](#) — *San Francisco Chronicle*
- [California Against the Sea](#) — *Los Angeles Times*

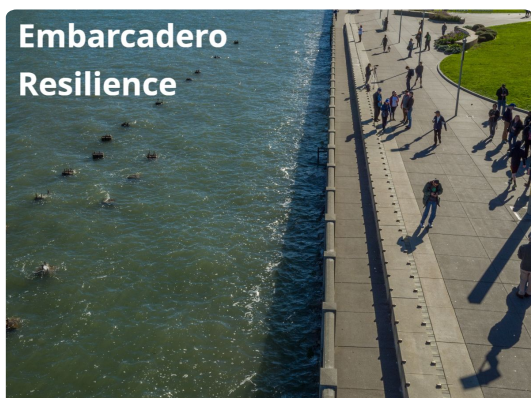
---

## Waterfront Resilience Program Website Re-Fresh

Check-out the recently revamped [sfportresilience.com](http://sfportresilience.com)! The website is the place to stay up-to-date on the Port's Waterfront Resilience Program. It includes upcoming events, opportunity to engage, details on resilience projects, and a resource library.

We want to hear from you! Please take a moment to complete the four engagement opportunities below:

- [Seawall Program Goals Survey](#)
- [Historic Pier Rehabilitation Survey](#)
- [Waterfront Assets Mapping](#)
- [Waterfront Resilience Program Survey](#)





Issue No. 18

## It's Climate Week at the Port!

We are inspired by the millions of people standing up for immediate climate action around the world this week. The Port of San Francisco is working to do our part both through mitigating climate change and adapting the waterfront to rising sea levels. Hear more from Port Executive Director Elaine Forbes in her interviews with John King from the [San Francisco Chronicle](#) and [ABC7 News](#).

## Thank you for helping us map the waterfront!

Thank you for attending the Islais Creek / Bayview Resilience Community Meeting! Your input is needed to ensure that community assets are properly identified, and that efforts to protect the waterfront reflect the priorities of the community and a shared vision for the future. Couldn't attend? [Review the presentations](#) and share your ideas by [mapping assets online](#). We look forward to seeing you next time!



## EcoCenter PlayDay

Spend tomorrow at EcoCenter PlayDay! Join the San Francisco Recreation & Park Department, the Port, and other partners at the EcoCenter at Heron's Head Park to celebrate National Public Lands Day. Activities include a rock-climbing wall, introduction to fishing, planting in the park, a bee-keeping demonstration, and making "seed bombs."

View the [event flyer](#) and register for this FREE event [here](#).

HERON'S HEAD PARK

# ECOCENTER PLAYDAY

Saturday  
September 28th, 2019  
11:00am - 3:30pm

**CONNECTING TO NATURE THROUGH SERVICE.**

Activities Include:

- Rock Wall
- Seed Bombs
- Bee Workshop
- And more!

RSVP here  
[http://bit.ly/ecocenter\\_playday](http://bit.ly/ecocenter_playday)





## Project Spotlight:


### Mission Bay Ferry Landing

Chase Center is open and soon ferries will be another way to attend games and shows! The Mission Bay Ferry Landing will provide regional service to the central waterfront with an estimated capacity for 6,000 daily passengers. It will be designed to accommodate the expected sea level rise and provide transportation resilience in the event of an earthquake, BART or Bay Bridge failure, or other unplanned events. [Download this factsheet](#) to learn more.

## Another award for the Port!

The Port is excited to share that the Embarcadero Seawall Program received an Award of Excellence from the City-County Communications & Marketing Association for innovative communications. Thank you to [Ritual Coffee Roasters](#) and [Black Hammer Brewing](#) for partnering on these Seawall brews! Read the coverage from the [San Francisco Chronicle](#).



 Forward this newsletter to your friends and colleagues!



Issue No. 19

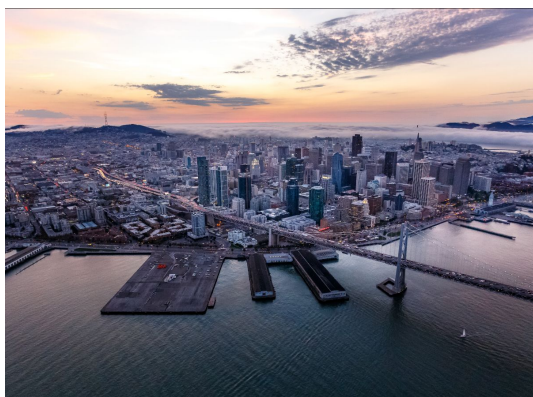
## 30 years after the 1989 Loma Prieta Earthquake

Thirty years ago today, on October 17 at 5:04 PM, the Loma Prieta Earthquake sent a shock that reverberated throughout the Bay Area. The United States Geological Survey estimates there is a **72 percent chance of a major earthquake happening before 2044**. One of the most important actions we can do as a city to prepare for the "big one" is to strengthen our Embarcadero Seawall and invest in a safer and more resilient waterfront. Thank you for already being apart of this vital effort.

### Bringing the Port to you!

We'll be in the community this fall and winter to talk about waterfront resilience and hear from you! Visit [sfportresilience.com](https://sfportresilience.com) for the full outreach calendar, including:

- Oct 17th - [Loma Prieta Community Preparedness Fair](#)
- Oct 20th - [Excelsior Sunday Streets](#)
- Nov 9th - [Health & Harvest Festival](#)
- Dec 19th - [Winter Wonderland](#)



### Community Meeting on the Seawall risk assessment

Mark your calendars for the next Embarcadero Seawall Community Meeting, where we will begin to explore the Port's massive investigation of risks to the waterfront — officially called the Multi-Hazard Risk Assessment, or MHRA. [RSVP here](#) — more details to come!



## Resilience in the news

- [Race Against Time: San Francisco Bay Is Rising](#) - *San Francisco Chronicle*
- [Bay Area Prepares for Sea Level Rise](#) - *ABC 7 News*
- [Interview with Port Executive Director Elaine Forbes](#) - *KIQI 1010AM Hecho en California*

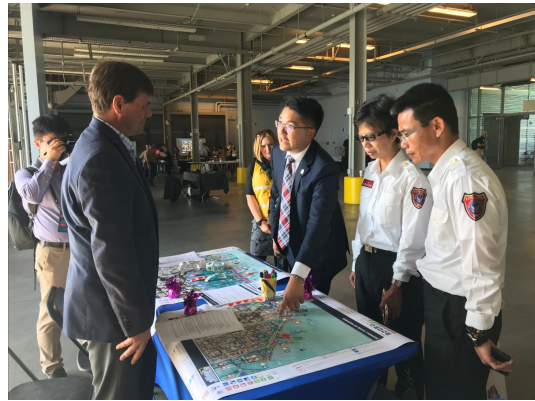



## A photogenic waterfront!

The Port has lots of new photos on [Flickr](#). Follow us to see images from along our beautiful waterfront and find yourself in the outreach photos! Join the conversation using #SFPort.

## Fleet Week 2019

Thank you to everyone for making Fleet Week 2019 another huge success! We participated in safety drills, shared engagement exercises, and talked about the key role the waterfront plays in the region's emergency response and recovery efforts.



 Forward this newsletter to your friends and colleagues!

*Copyright © 2019 Port of San Francisco, All rights reserved.*

Want to change how you receive these emails?  
You can update your preferences or unsubscribe from this list.



Waterfront Resilience Program Update

Issue No. 20

## RSVP for the Holiday Mixer this Thursday!

The Port of San Francisco is excited to begin the holiday season by connecting with stakeholders, including residents, local merchants, developers, and others about waterfront opportunities and resilience. We hope to see you there - please [RSVP](#) so we can be sure to have plenty of food!

*Holiday Mixer*

with the San Francisco Port Commission,  
Supervisor Shamann Walton,  
the Bayview Merchants Association,  
and the Merchants of Butchertown

**THURSDAY, NOVEMBER 21**  
**6:00 - 8:00 PM**

**RADIO AFRICA & KITCHEN**

## Lasers? Seismic modeling? Join on 12/11 to learn more!

Connect with the Port to learn more about the methodology behind the Port's massive Embarcadero Seawall investigation – officially called the Multi-Hazard Risk Assessment, or MHRA. The Port is using lasers to measure water depth, drilling holes to better understand soil conditions, modeling earthquakes using innovative technology, and hearing from the community about what aspects of the waterfront matter most.

**The event will be held on Wednesday, December 11 at the Exploratorium's Fisher Bay Observatory with food provided by the Exploratorium's Seaglass Restaurant.**

**RSVP today!**

## Supporting young leaders

### at the Girls' Festival

The Port was a proud sponsor of this year's WorldWideWomen Girls' Festival. We loved hearing your ideas for the future waterfront, talking about careers at the Port, seeing your fun photobooth photos, and connecting about waterfront resilience. The future looks bright with young leaders like these!



### The Port in the Capitol

Executive Director Forbes and Port Commission President Brandon visited members of Congress and federal partners to share updates on the Waterfront Resilience Program and the important perspective of a region facing both seismic and flood risks. Thanks to Representative Speier and everyone else we connected with in Washington D.C.!



### Thank you for joining us at the Halloween Pop-Up!


Thank you to Supervisor Shamann Walton, the Hunters View Resident Council, and our City partners for throwing a fantastic Halloween party! It was great seeing everyone trick-or-treat their way through tables about waterfront resilience, Heron's Head Park, Mission Rock, and much more!



### Record cargo growth

San Francisco's waterfront is seeing record cargo growth, driven by electric cars and dry bulk goods, such as sand and aggregates used in construction. The Port is committed to expanding cargo services and supporting local jobs and a working waterfront. [Learn more in the Cargo Factsheet.](#)



 Forward this newsletter to your friends and colleagues!



Issue No. 21

### RSVP for the Embarcadero Seawall Meeting #5 on 12/11

Join the Port to learn about the methodology behind the Port's massive Embarcadero Seawall Program investigation – officially called the **Multi-Hazard Risk Assessment**, or MHRA. Refreshments provided by the Exploratorium's Seaglass Restaurant.

#### Event Details

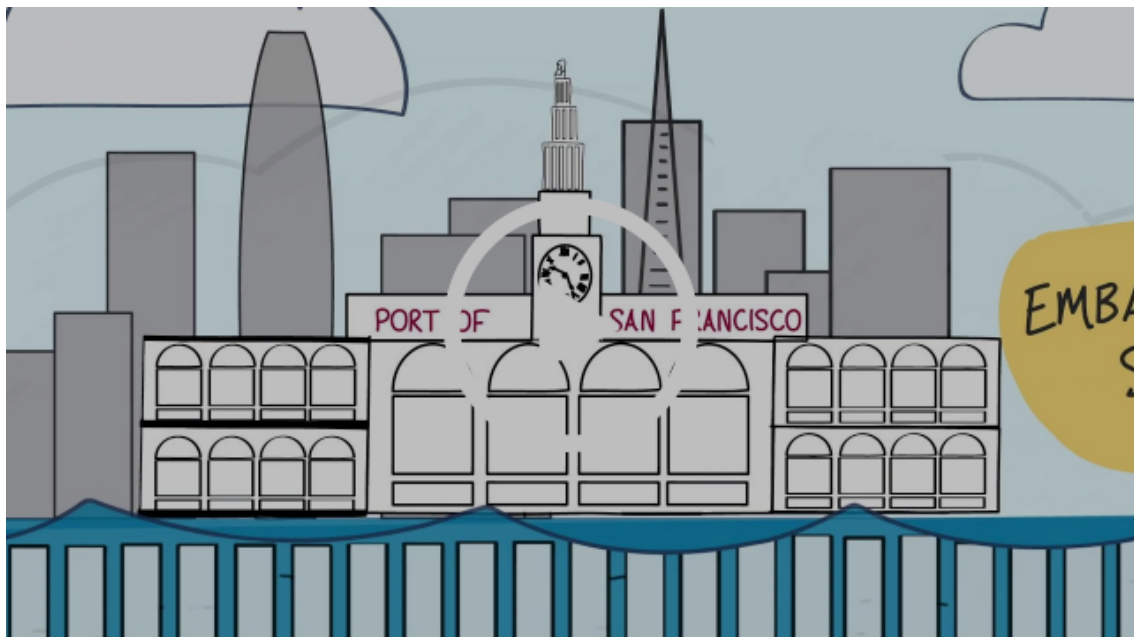
Wednesday, December 11, 2019

5:30 PM – 7 PM

Fisher Bay Observatory Gallery, Exploratorium

Pier 15, Embarcadero, San Francisco

Following a brief presentation, visit stations staffed by experts on the following topics: **Buildings and Structures - Disaster Response - Environmental - Flood Risk - Historic Resources - Life Safety - Maritime - Parks and Open Spaces - Public Life and Use - Seismic Risk - Transportation - Utilities**



Watch the Multi-Hazard Risk Assessment "Explainer" video to learn more!



## Thank you for making the Holiday Mixer a success

Thank you to the Port Commissioners, Supervisor Shamann Walton, Radio Africa & Kitchen, the Bayview Merchants Association, the Merchants of Butchertown, and everyone who attended for sharing a special evening together. There were great conversations about Port projects, contracting opportunities, and general holiday merriment! We also heard your feedback on priorities for waterfront resilience.

Couldn't attend but want to provide feedback? Please follow the links below:

- [Weigh-in on the draft Islais Creek / Bayview Waterfront Resilience Program goals](#)
- [Map the waterfront and share feedback on what matters most to you](#)

---

### Islais Creek walking tour

Join the Port on January 11 for the first walking tour of Islais Creek! Learn about the history, ecology, and work to mitigate and adapt to sea level rise. Discuss current and future flood impacts, City adaptation projects, and how to get involved. [RSVP and review details here.](#)



### A royal waterfront walk

It's nearly King Tides season! Join the Exploratorium and Port staff to learn about the King Tides and the Port's Waterfront Resilience Program. Meet between Piers 3 and 5 - rain or shine. See the future!


- [Friday, January 10 at 10 AM](#)
- [Saturday, January 11 at 10:45 AM](#)

---

### Islais Creek / Bayview Resilience Community Meeting #2

Save the date on January 30, 2020 for the second in a series of community meetings in the Islais Creek / Bayview neighborhoods. Learn more about the coordinated resilience projects and help shape the shoreline's future with your ideas and priorities. [RSVP here.](#)



 Forward this newsletter to your friends and colleagues!